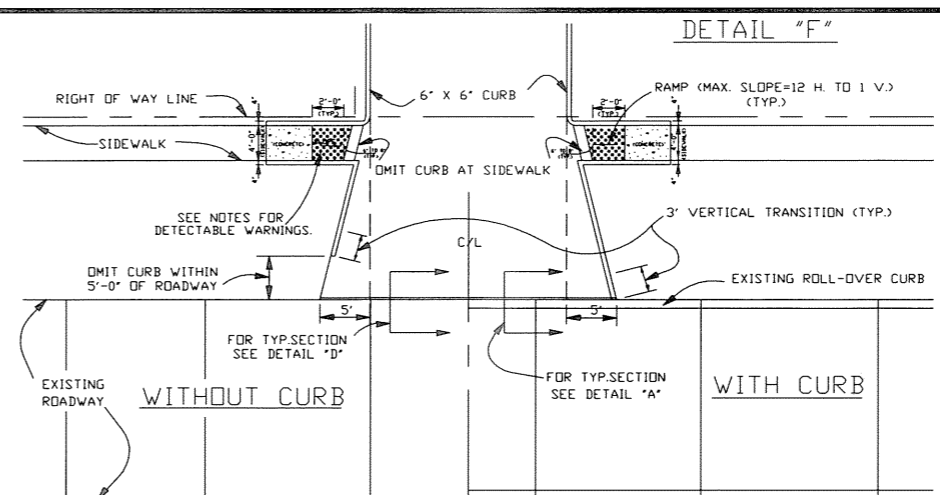


PLAN OF NEW CURBED DRIVEWAY CONNECTING TO CURBED ROADWAY
*CURB WIDTH PLUS 3"



PLAN OF NEW CURBED DRIVEWAY CONNECTING TO ROADWAY WITH OR WITHOUT CURBS.

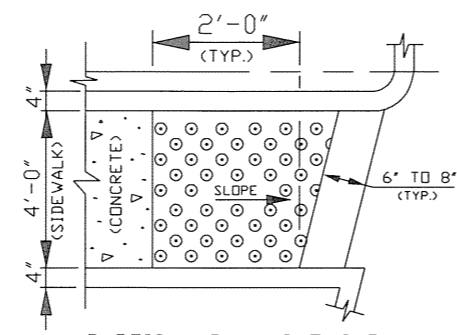
NOTE:
FOR PER POUR INSPECTION CALL THE DEPARTMENT OF ENGINEERING AT 736-6793 FOR APPOINTMENT.

DRIVEWAY SPECIFICATIONS

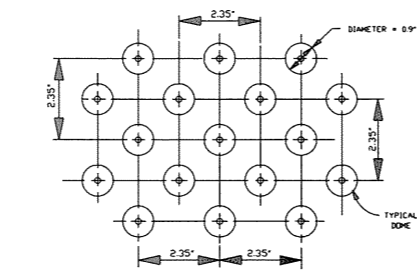
ALL DRIVEWAYS BETWEEN STREET AND PROPERTY LINE TO BE CONSTRUCTED OF PORTLAND CEMENT CONCRETE, WITH A COMPRESSIVE STRENGTH OF 3,000 P.S.I. IN TWENTY-EIGHT (28) DAYS AND A MINIMUM THICKNESS OF EIGHT INCHES.

NOTES:

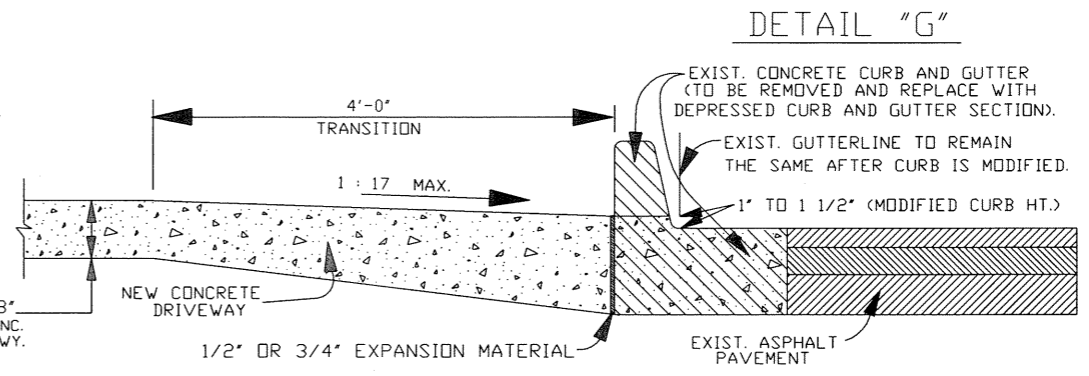
1. DETECTABLE WARNINGS SHALL CONSIST OF TRUNCATED DOMES WITH A NOMINAL DIAMETER OF 0.9 INCH(23mm), A NOMINAL HEIGHT OF 0.2 INCH(5mm) AND A NOMINAL CENTER-TO-CENTER SPACING OF 2.35 INCH(60mm) AND SHALL CONTRAST VISUALLY WITH ADJOINING SURFACES.
2. THE MATERIAL USED TO PROVIDE CONTRAST SHALL BE AN INTEGRAL PART OF THE WALKING SURFACE. DETECTABLE WARNINGS USED ON INTERIOR SURFACES SHALL DIFFER FROM ADJOINING WALKING SURFACES IN RESILIENCY OR SOUND-ON-CANE CONTACT.
3. DETECTABLE WARNINGS ON CURB RAMPS SHALL BE CREATED EITHER BY THE INSTALLATION OF MASONRY UNIT PAVERS OR TILES HAVING DIMENSIONS AND A CONFIGURATION OF THE TRUNCATED DOME DETAILS SEEN HEREON OR BY STAMPING THE NEWLY PLACED CONCRETE SURFACE OF THE RAMP WITH THE TRUNCATED DOME PATTERN BEFORE CURING.
4. DETECTABLE WARNINGS SHALL COVER THE FULL DEPTH AND WIDTH OF THE MAIN SURFACE OF THE RAMP. ANY RAMP HAVING FLARED SIDES WILL NOT BE REQUIRED TO HAVE THESE DETECTABLE WARNINGS ON THE FLARES.
5. THE LIMITS OF THE MAIN SURFACE OF THE RAMP ON WHICH THE DETECTABLE WARNINGS ARE PLACED SHALL HAVE A REDDISH COLOR SIMILAR TO THAT OF 'TERRA COTTA' TILE. IN THE EVENT THAT PAVERS OR TILES ARE TO BE USED, THE COLOR MUST BE CHOSEN BY THE CONTRACTOR AND APPROVED BY JEFFERSON PARISH DEPARTMENT OF ENGINEERING BEFORE INSTALLATION. IF THE CONTRACTOR DESIRES TO USE THE STAMPING OR IMPRINTING METHOD IN LIEU OF USING PAVERS OR TILES, THE COLOR OF THE DYE OR HARDENER CHOSEN MUST MEET THE APPROVAL OF THE DEPARTMENT OF ENGINEERING.



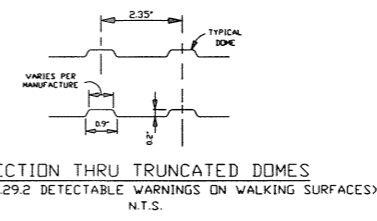
PARTIAL PLAN SHOWING 2'-0" OFF SET FOR TRUNCATED DOMES
N.T.S.



PARTIAL PLAN OF TRUNCATED DOMES
(ADAAG 4.29.2 DETECTABLE WARNINGS ON WALKING SURFACES)
N.T.S.



NEW DRIVEWAY CONNECTION TO EXISTING ASPHALT ROADWAY WITH CURB AND GUTTER
SCALE: N.T.S.



SECTION THRU TRUNCATED DOMES
(ADAAG 4.29.2 DETECTABLE WARNINGS ON WALKING SURFACES)
N.T.S.

DETAIL "G"

COMMERCIAL PLAN OF DETAIL NO. 2

JEFFERSON PARISH DEPARTMENT OF ENGINEERING			
DRAWING TITLE: STANDARD DETAILS FOR CONNECTING DRIVEWAYS TO EXISTING ROADWAYS			
DRAWN BY:	T.V.C.	DATE:	8-3-93
REVISION:	H.J.W.	DATE:	03/31/00
REVISION:	H.J.W.	DATE:	02/16/05
REVISION:	H.J.W.	DATE:	06/22/05
SCALE:	AUTOCAD-LT. (HAROLD D)	DATE:	07/26/02
FILE NUMBER:	ENV-09	DATE:	02/14/05