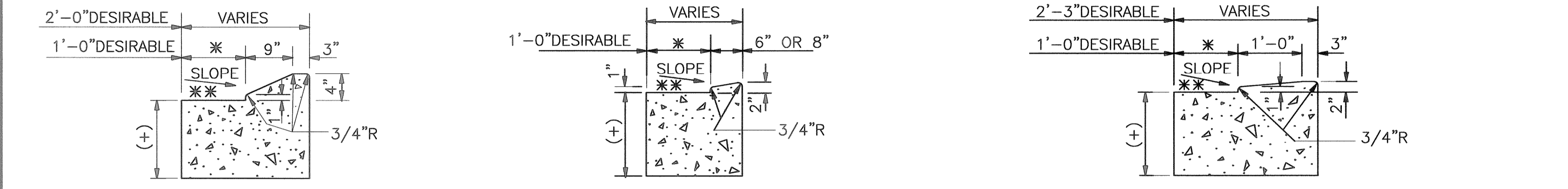


**BARRIER CURB & GUTTER**  
(DRAINAGE AWAY FROM CURB SHOWN)

**BARRIER CURB & GUTTER**  
(DRAINAGE TO CURB SHOWN)

**BARRIER CURB & GUTTER (HEAVY DUTY)**  
(TO BE USED MOSTLY ON THE INSIDE SECTION OF "U"-TURNS (CANAL SIDE))

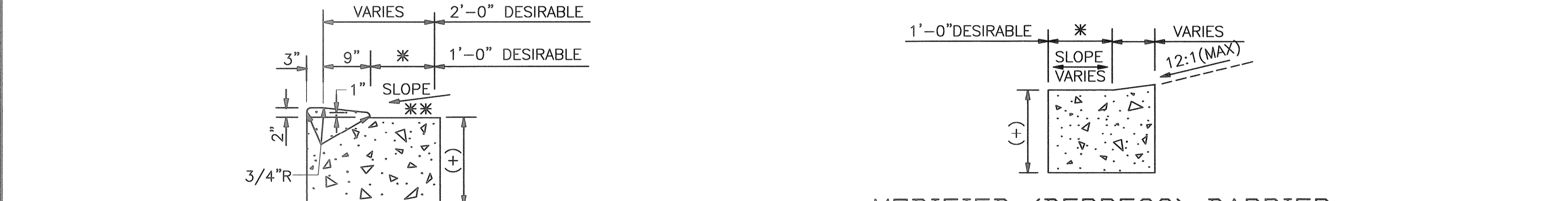
**MOUNTABLE CURB & GUTTER (PARISH STANDARD)**  
(DRAINAGE TO CURB SHOWN)



**MOUNTABLE CURB & GUTTER (DOTD STANDARD)**  
(DRAINAGE TO CURB SHOWN)

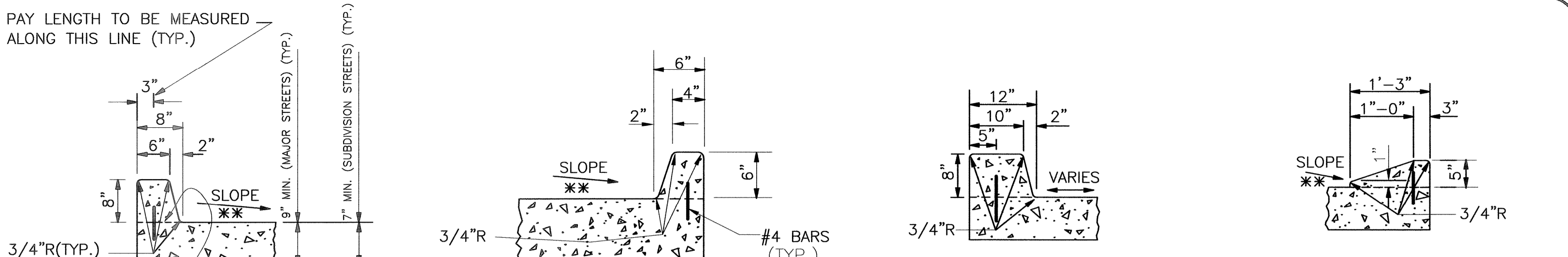
**MODIFIED (DEPRESS) BARRIER CURB & GUTTER**  
(DRAINAGE TO CURB SHOWN) TO BE USED ON DRIVEWAYS & OTHER AREAS WHICH REQUIRE THE DEPRESSION OF A BARRIER CURB

**MODIFIED (DEPRESS) MOUNTABLE CURB & GUTTER (PARISH STANDARD)**  
(DRAINAGE TO CURB SHOWN) TO BE USED ON DRIVEWAYS & OTHER AREAS WHICH REQUIRE THE DEPRESSION OF A MOUNTABLE CURB



**MODIFIED (DEPRESS) MOUNTABLE CURB & GUTTER (D.O.T.D. STANDARD)**  
(DRAINAGE TO CURB SHOWN) TO BE USED IN DRIVEWAYS AND OTHER AREAS WHICH REQUIRE THE DEPRESSION OF A MOUNTABLE CURB

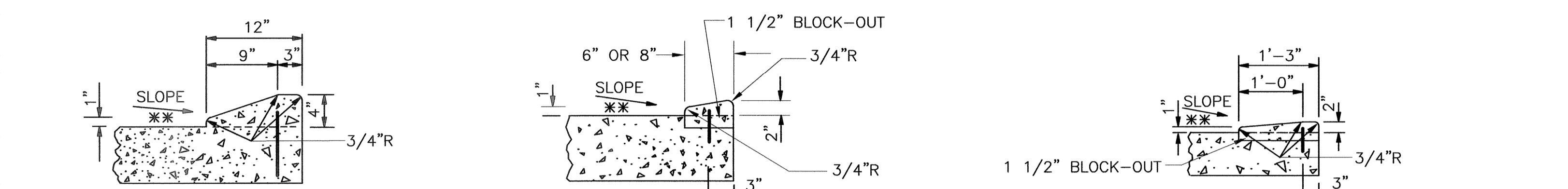
**MODIFIED (DEPRESS) BARRIER CURB & GUTTER**  
(TO BE USED ON HANDICAP RAMP AREAS)



**BARRIER CURB**  
(DRAINAGE AWAY FROM CURB SHOWN)

**BARRIER CURB (HEAVY DUTY)**  
(TO BE USED MOSTLY ON THE INSIDE SECTION OF "U"-TURNS (CANAL SIDE))

**MOUNTABLE CURB (PARISH STANDARD)**  
(DRAINAGE TO CURB SHOWN)



**MOUNTABLE CURB (D.O.T.D. STANDARD)**  
(DRAINAGE TO CURB SHOWN)

**MODIFIED (DEPRESS) BARRIER CURB**  
(DRAINAGE TO CURB SHOWN) TO BE USED ON DRIVEWAYS & OTHER AREAS WHICH REQUIRE THE DEPRESSION OF A BARRIER CURB

**MODIFIED (DEPRESS) MOUNTABLE CURB (PARISH STANDARD)**  
(DRAINAGE TO CURB SHOWN) TO BE USED ON DRIVEWAYS & OTHER AREAS WHICH REQUIRE THE DEPRESSION OF A MOUNTABLE CURB



**MODIFIED (DEPRESS) MOUNTABLE CURB (D.O.T.D. STANDARD)**

**MODIFIED (DEPRESS) BARRIER CURB**  
(TO BE USED ON HANDICAP RAMP AREAS)

**COMMONLY USED CONCRETE CURB SECTIONS ON CAPITAL PROJECTS (CONCRETE ROADWAY)**

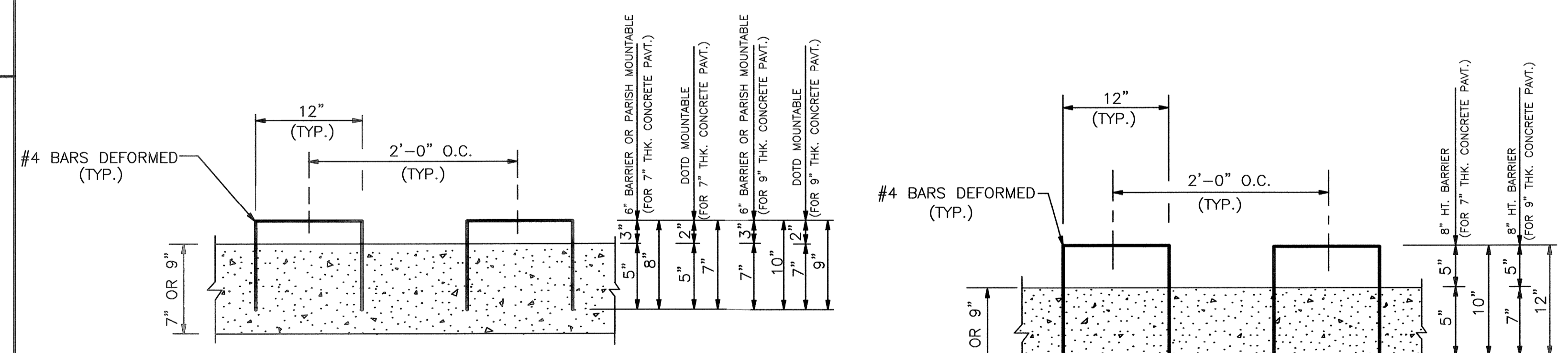
**COMMONLY USED CONCRETE CURB & GUTTER SECTIONS ON CAPITAL PROJECTS (ASPHALT ROADWAY)**

- GENERAL NOTES:**
- \* 1.- DIMENSION MAY VARY FROM PROJECT TO PROJECT DEPENDING ON DESIGN CRITERIA ESTABLISHED. A 1'-0" (MAXIMUM) WIDE GUTTER SECTION IS DESIRABLE. LESSER THAN DESIRABLE WIDTH (1'-0") WILL REQUIRE THE APPROVAL OF THE DEPARTMENT OF ENGINEERING.
  - \*\* 2.- PROVIDE SAME TRANSVERSE SLOPE AS THE ROADWAY TYPICAL SECTION. SLOPE MAY VARY IN SPECIAL CONDITIONS.
  - (+) 3.- DEPTH OF GUTTER SECTION IS TO BE GOVERNED BY ROADWAY TYPICAL SECTION. ALL ROADWAY TYPICAL SECTIONS MUST BE APPROVED BY THE DEPARTMENT OF ENGINEERING PRIOR TO COMMENCEMENT OF DESIGN WORK.
  - 4.- ANY TYPE OF VARIATIONS FROM THESE CURB AND CURB & GUTTER SECTIONS WILL REQUIRE THE APPROVAL OF THE DEPARTMENT OF ENGINEERING PRIOR TO COMMENCEMENT OF DESIGN WORK.

**NOTE:**

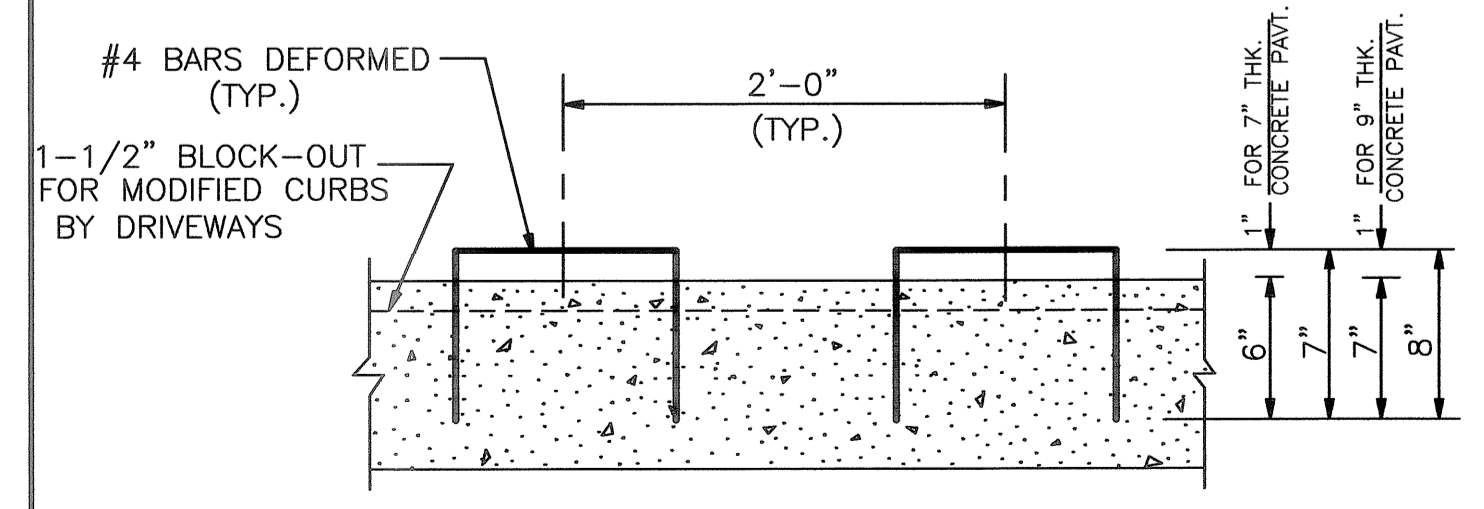
THIS SHEET IS TO BE USED FOR INFORMATIONAL PURPOSES ONLY. IT SHALL NOT BE USED AS A STANDARD PLAN FOR CAPITAL PROJECTS. ENGINEER/ARCHITECT SHALL BE TOTALLY RESPONSIBLE FOR THE DEVELOPMENT OF THEIR OWN CURB/CURB AND GUTTER DETAILS ON A PROJECT BY PROJECT BASIS.

**THIS SHEET IS NOT TO BE USED AS A STANDARD PLAN FOR CAPITAL PROJECTS.**



**6" BARRIER OR PARISH/DOTD STANDARD MOUNTABLE CURBS**

**8" BARRIER CURB**



**MODIFIED (DEPRESS) MOUNTABLE ON BARRIER CURBS (FOR DRIVEWAYS)**

**CURB DOWEL DETAILS (CONCRETE ROADWAY)**

N.T.S.

JEFFERSON PARISH DEPARTMENT OF ENGINEERING			
DRAWING TITLE: CURB AND CURB & GUTTER DETAILS			
DRAWN BY: W.J.B.	DATE FINISHED: 12-08-00	REVISED: -	DATE: -
CHK'D BY: P.D.	DATE: 4-12-04	REVISED: -	DATE: -
REVISION: -	DATE: -	REVISED: -	DATE: -
XREF: AUTOCAD-LT-2004	VIB: CURBDET.DWG		
FILE NUMBER: 3508			