



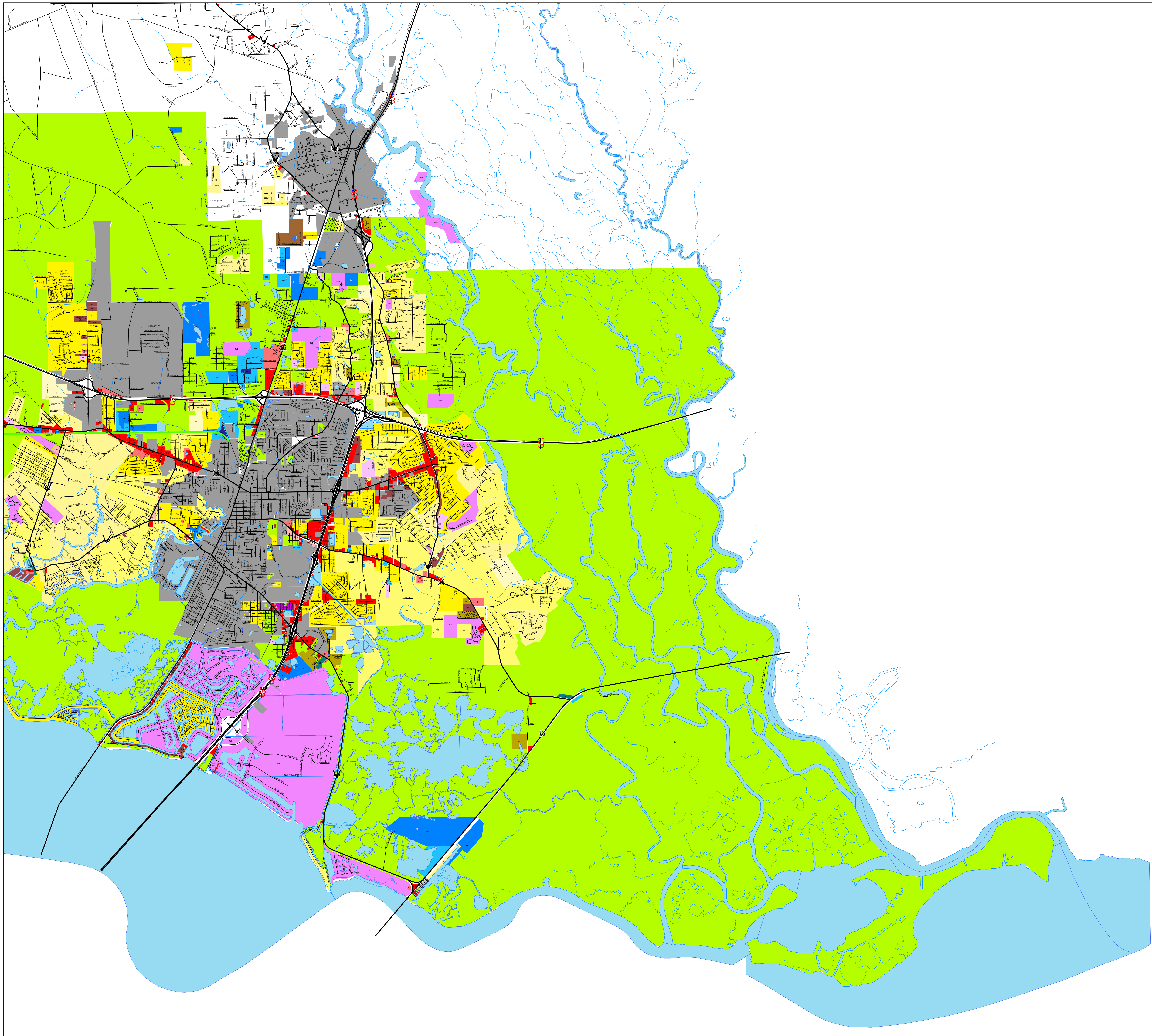
St. Tammany Parish Government
P.O. Box 628
Covington, LA 70434

Kevin C. Davis,
President

Ward 8 Zoning - August 2008

Legend

- Rural
- SA Suburban Agriculture
- A-1 Suburban
- A-2 Suburban
- A-3 Suburban
- A-4 Single Family Residential
- MH Mobile Home
- A-5 Two Family Residential
- A-6 General Multiple Family
- SD Special District
- RC Recreation/Conservation
- ID Institutional
- PUD Planned Unit Development
- LC Light Commercial
- C-1 Neighborhood Commercial
- C-2 Highway Commercial
- C-3 Planned Commercial
- M-1 Light Industrial
- M-2 Intermediate Industrial
- M-3 Heavy Industrial
- Municipalities
- Water Bodies
- Streams
- Major Roads
- Roads & Streets
- Tammany Trace



This map was produced by the St. Tammany Parish Department of Planning.
Note: This map is for planning purposes only. It is not a legally recorded plan, survey, official tax map or engineering schematic, and it is not intended to be used as such. Map layers were created from different sources at different scales, and the actual or relative geographic position of any feature is only as accurate as the source information.
Copyright (c) August 2008, St. Tammany Parish, Louisiana. All rights reserved.

0 0.25 0.5 1
Miles