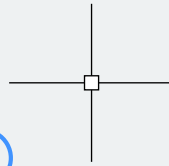


UPDATED FOR V16



BRICSCAD®



BRISYS

Table of Contents

BricsCAD.....	3
What's New in BricsCAD V16.....	4
Important notes	4
New in V16.1	5
Differences Between Platforms and Levels	9
Installation.....	10
Silent Installation	11
To silently perform a BricsCAD installation	11
Increase the Memory Limit	12
Licensing	13
Overview	13
View your Licenses	13
Manage your Licenses	14
BricsCAD Communicator.....	15
To manage a BricsCAD Communicator license	15
Proxy Settings.....	16
Activation	17
First Run	17
Trial Mode	18
To activate BricsCAD in trial mode	18
Running BricsCAD in trial mode	19
Feature levels	19
When Starting BricsCAD in Trial mode.....	20
Replacing or Upgrading an Existing License.....	21
By license type.....	22
To activate a Single or Volume license.....	22
Network License	23
To use a network license on a client computer.....	23
Roaming.....	24
To set the environment variable RLM_ROAM	24
Modification	25
To modify a BricsCAD license	25
Deactivation.....	26
To deactivate a license	26
To revoke a license	27
Network license server	28
Windows server setup	29

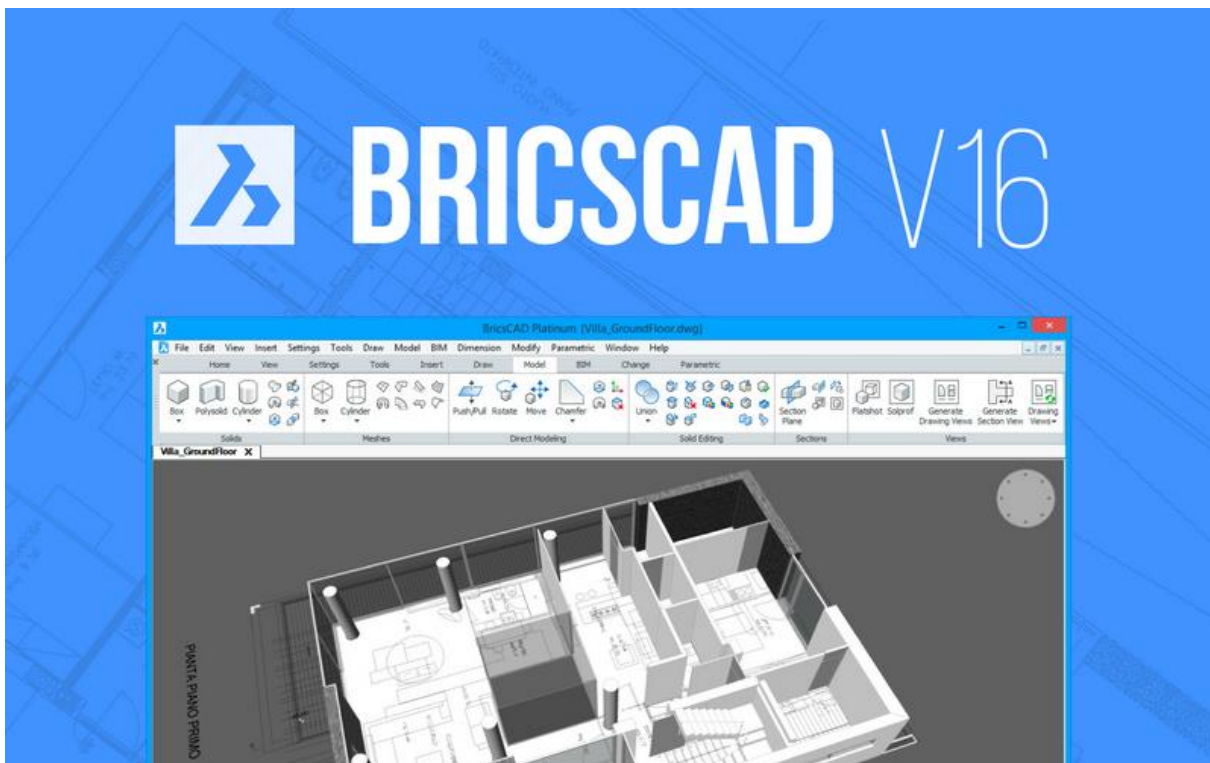
Install the Bricsys Network License Manager	29
New installation.....	30
To install a new network license on an existing license server	30
To upgrade the Bricsys Network License Manager	30
Activate the Network license	31
Start the Network license server.....	32
Linux server setup	33
License server administration	34
The web interface	34
Start the server automatically	35
To start the server automatically	35
Check the license and server status	36
Reread the license / Restart the server.....	38
Advanced configurations.....	39
Antivirus.....	39
Firewall	39
Proxy	40
Network license manual activation	41
To activate a Network license manually	41
Single or Volume manual activation	43
To activate a Single or Volume license manually	43
Trial manual activation	46
To activate a trial manually.....	46
Developer Reference	49

BricsCAD

Whether you're a novice user or an experienced CAD professional, you'll soon be creating drawings using the numerous productivity-enhancing features in the software.

With hundreds of third party solutions, BricsCAD is the powerful CAD software platform unifying 2D CAD and 3D direct modeling for dwg on Windows and Linux.

These are just a few of the many features that we have included in the program to make the transition into CAD-based drawing a smooth one for new users. We have also incorporated many features that experienced CAD users have been requesting for years in a drawing package. You have chosen an affordable, high-quality software program to produce your drawings. We are convinced you will be pleased with the results!



This help file describes all the BricsCAD features. Some features do not apply to the Classic and/or Pro versions; some commands are not supported on the Linux and/or the Mac platforms.

Please see the [Command Reference](#) to check the availability of a command on the various platforms (Windows, Linux, Mac) and feature levels (Platinum, Pro or Classic).

 We also recommend our [Online Tutorials](#)  on [Bricsys TV](#) .

What's New in BricsCAD V16

Below is a brief description of the enhancements and new features.

Please read the BricsCAD Release Notes with the latest changes (new features, improvements and bug fixes and development features).

Important notes

BricsCAD® (Windows) V16 installs and runs independently from previous BricsCAD versions.

V16 is not binary compatible with previous major versions, some API's have changed. Most 3rd party applications/tools, except scripts and applications written in pure Lisp, will need to be rebuilt by their manufacturer in order to run on V16. If you are using 3rd party applications, please check with your supplier for V16 compatibility and updates.


In trial mode, BricsCAD runs as full Platinum version without any feature restrictions.

The *RunAsLevel* user preference allows to run BricsCAD in a lower level than the licensed level. A restart is needed after changing this *RunAsLevel* user preference.

- **Pro** or **Platinum** license is required for:
 - Rendering
 - 3D direct modeling
 - Generated Views
- **Platinum** license is required for
 - 3D Constraints
 - Mechanical Assembly design
 - BIM (Building Information Model).
- **Platinum** + **Sheet Metal** licenses are required for
 - Sheet Metal design
- **Platinum** + **Communicator** licenses are required for
 - Communicator exchange module

LICENSE MANAGER DIALOG: The *Bricsys License Manager* dialog, summarizes your available licenses (BricsCAD, Communicator and Sheet Metal). It is accessible in the menu under *Help > License Manager*, or by the LICENSEMANAGER command.

See [Differences between platforms and levels](#) for a detailed overview of the differences between **Classic**, **Pro** and **Platinum** licenses on the **Windows**, **Mac** and **Linux** platforms.

To report problems, please send a [Support Request](#) .

The [Sheet Metal workspace](#) has been added.

New in V16.1

ASSEMBLY DESIGN:

- **Local mechanical components** are introduced. The definition of a local component is stored in the same .dwg file where the component is inserted in the mechanical assembly.
- **BMFORM**: the command optionally creates a local component.
- **BMEXTERNALIZE** and **BMLOCALIZE**: commands which allow to convert a component to a local or an external component respectively, breaking or establishing a link with the external file.
- **BMMECH**: the command optionally converts blocks and external reference to local and external mechanical components.
- **MECHANICAL BROWSER**: different icons are used to distinguish between external and local components. Commands to convert the component type (local or external) are available in the context menu.
- **BMOPENCOPY**: the command creates new document containing a copy of component definition for the selected instance.
- **BMREPLACE**: the command allows changing definition file for single or several mechanical component.

ASSOCIATIVE ARRAYS: An array is a pattern of copied items, each item consisting of a selection of entities. The associativity between the items allows to propagate changes throughout the array by maintaining relationships between the items. Each item is contained in a block-like structure. For existing associative arrays it remains possible to edit e.g. the spacing between items, or the number of items, or the pattern properties. The properties of each item can be individually overridden and the content of an item can be modified.

- **ARRAYPATH**: command to distribute entity copies evenly along a (portion of) a path. The path can be a line, polyline, arc, circle, ellipse, spline, helix or 3D polyline. The Method option allows to distribute items along the path by a measure (distance) or by dividing the path in a number of divisions.
- **ARRAYPOLAR**: command to distribute entity copies evenly in a circular pattern about a center point or axis of rotation.
- **ARRAYRECT**: command to distribute entity copies into any number of rows, columns, and levels.
- **ARRAYASSOCIATIVITY**: system variable that sets whether new arrays are associative or not.
- **ARRAYEDIT**: command that allows editing associative array entities and their source entities.
- **ARRAYCLOSE**: command allows the saving or discarding of changes made by the ARRAYEDIT command.
- **ARRAYEDITSTATE**: read-only system variable that indicates whether or not the drawing is in the array editing state.

BIM:

- Windows and Doors:
- **BIMINSERT**:
 - Press CTRL to switch dynamically between entering width and height of the door, and distance to neighbor-entities.
 - Hover on an existing door or window and choose BIMINSERT in the quad to place the same window or door, with the same parameter values.
- **BIMREPOSITION**: reposition an existing door or window using the same dynamic dimensions as in BIMINSERT

- **BIMFLIP**: Mirror a window or door left/right or in/out with one click in the quad.
- **Replacing windows and doors**: Assign a different definition file to an inserted window or door using the 'File' property in the properties panel. Parameter values are copied to the new insert if applicable.
- **BIMDRAG**: when dragging a major face of a wall- or slab-like solid, pressing CTRL allows to dynamically place a parallel copy. BIMDRAG is now available on a detected boundary on a major face of a wall or slab-like solid. Dynamically place a parallel copy of the part of the solid, clipped by the boundary.
- BIM Databases: custom properties can be defined on **Materials** and **Compositions**.
- **BIMSECTION**: Creates a BIM section entity.
- **BIMSECTIONUPDATE**: Exports or updates the result of a BIM section in a drawing.
- **BIMSECTIONOPEN**: Opens the drawing file related to a BIM section entity; or the 3D BIM model related to a BIM section drawing.

COMMUNICATOR:

- **Import** of product (assembly) structure is now supported for a number of CAD formats (ACIS, CATIA V4/V5/V6, IGES, Inventor, NX, Parasolid, Pro/E/Creo, Solid Edge, SolidWorks, STEP, VDA-FS, XCGM). ImportProductStructure setting controls whether the structure is imported as regular blocks or as local mechanical components.
- ImportRepair, ImportStitch and ImportSimplify settings control if imported geometry should be automatically repaired, stitched and simplified.
- ImportIgesStitch and ImportIgesSimplify settings control if geometry imported from IGES/IGS files should be automatically stitched and simplified.
- ImportSwRotateYZ setting controls if geometry imported from SolidWorks files should be automatically rotated to map Y axis to Z axis.

DATAEXTRACTION:

- Wizard that allows to export mostly any property of the entities contained in a dwg file.
- Export configuration is saved in a .dxd Data Extraction Definition file.
- Exported file format is .csv (Comma Separated Values) and can be imported as a Table entity.

DEFORMABLE MODELING: a new toolset enables freeform modifications of 3D solids and surfaces by deforming their faces and edges. Also applicable for imported geometry.

- **DMDEFORMPOINT**: deforms entity by transforming a point lying on the specified face.
- **DMDEFORMMOVE**: deforms entity by transforming (moving and rotating) the specified edges.
- **DMDEFORMCURVE**: deforms entity by transforming a set of its edges into the specified set of target curves.

DIRECT MODELING:

- **DMREPAIR**: the command checks and optionally fixes errors in 3D solids and reports the result to the report panel.
- **DMSELECT**: the command automatically selects specific 3D sub-entities and their combinations (also available as separate tools in the Quad menu):
 - edges of the same (less, less or equal, greater, greater or equal) length
 - faces of the same area
 - protrusions/depressions of the same radius
 - blends fillets (fillets) of the same radius
 - blends and blend networks with an option to ignore short blends

DRAWING LOCK FILE SYSTEM:

- While a drawing is open, .dwl and .dwl2 files are temporarily created.
- The content of the lock files allows to inform other users trying to open that drawing, that it is in use, since when, and by whom.
- **WHOHAS**: command to display ownership information for a selected drawing file.

EXPORTLAYOUT: command to export all visible entities from the current layout to the model space of a new drawing.

GCE SNAP: the new Geometric Center snap allows to snap to the centroid of any closed polylines and splines, planar 3d polylines, regions and planar faces of 3d solids. OSMODE flag 1024 is used for GCE, it replaces the obsolete and no longer used Quick snap.

GEOGRAPHIC COORDINATE REFERENCE SYSTEMS: added support for projections and coordinate reference systems for New Zealand, North America, Canada, Russia and the Russian Commonwealth of Independent States.

LOFT command:

- Creates 3D solids passing through two or more cross sections.
- Guide curves can be used to control the shape of the solid.
- Smooth or ruled transitions.
- Face normals and draft angles can be controlled through settings.

LINEARBRIGHTNESS: system variable to control the brightness level of a viewport when default lighting is used. Value range: -10 to 10.

LINEARCONTRAST: system variable to control the contrast level of a viewport when default lighting is used. Value range: -10 to 10.

MTEXT: added support for creating and editing multiple columns.

REPORT PANEL: New Report tab of Mechanical Browser displays the list of sub-entities that result from executing the DMREPAIR and SMSELECTHARDEDGES commands. It allows navigation, highlighting and selection of found entities. The BMREPORTPANEL system variable allows to enable/disable the Report panel.

SURFACE MODELING: Surfaces are now fully supported in 3D modeling. Direct modeling commands and 3D constraints can now be applied to surface entities and regions.

- **DMEXTRUDE** and **DMREVOLVE**: can be used to produce or modify surfaces by extruding/revolving curves, edges, planar entities and faces.
- **DMDELETE**: can now be used to remove holes (open loops) and faces from surfaces.
- **DMSTITCH**: the command has been reworked. It stitches a set of surfaces into a single entity of the specified type (3D solid or surface) or determines type automatically.
- **DMTHICKEN**: converts a surface to a 3D solid with a specified thickness.
- Applying direct modeling commands to procedural surfaces leads to converting them to a basic surface entity.

SHEET METAL: Sheet metal functionality has been considerably extended.

- **Corner Relief Feature**. Two new types of corner reliefs are supported: Circular and V-type; the relief parameters can be modified in the properties panel of the Mechanical Browser.
- **Feature Coloring**: specific colors are assigned to faces of Sheet Metal features. This behavior is controlled with the **FEATURECOLORS** system variable.
- Support for lofted Sheet Metal models has been added. **Lofted Bend Feature**: a new kind of sheet metal feature that can be unfolded into a sequence of bends with parameters to control the number of bends and their configuration (quadrangular or triangular).

- **SMLOFT**: the command allows constructing a sheet metal body with Lofted Bend Features and Flanges.
- **SMCONVERT**: added the possibility to recognize Lofted Bend Features.
- **SMBENDSWITCH**: added the possibility to convert a Bend Feature to a Lofted Bend Feature.
- **SMREPAIR**: command rethickens thickness faces, but also joins connected lofted bends which are surrounded by flanges and rebuilds them to be tangent to adjacent flanges.
- The SMRETHICKEN command becomes obsolete; use SMREPAIR instead.
- **SMRELIEFSWITCH**: added the possibility to change the type of Corner Relief Feature, switching between Rectangular, V-type and Circular.
- **SMSELECTHARDEDGES**: command to select all hardedges in all models. The operation result status is shown in the new Report Panel.

SHEETSETS:

- Added new system variables:
- **SSMAUTOOPEN**: controls whether the Sheet Set Manager is opened automatically when a drawing associated with a sheet is opened.
- **SSMPOLLTIME**: controls the refresh time interval for the status data in a sheet set.
- **SSMSHEETSTATUS**: controls how the status data (e.g. 'locked') in a sheet set is refreshed.
- Added Sheet Set tab to the **Drawing Properties** dialog to display sheetset data if the drawing is associated with a sheetset. Association can be removed with 'Remove Association' button.
- Added the possibility to select **Viewlabel** and **Callout** blocks, and place them associated to the selected sheet view.
- **Sheet list table** can be placed on any sheet of the sheetset. In the current implementation the table content is not associative.

TRANSPARENCY: Transparency setting is supported now and can be set for selected entities, or for all entities on a layer.

- **CETRANSPARENCY** controls the transparency value applied for new entities.
- **HPTRANSPARENCY** allows to set the transparency for new hatch entities created by the **HATCH** and **GRADIENT** commands.
- **GDIPLUS** is now the default graphics device on the Windows platform. It replaces the GDI device which has no support for transparency. Transparency when plotting is controlled by the Plot Transparencies option in the **Page Setup** and **Print** dialogs.
Note: the Plot Transparency option is disabled by default for performance reasons.

USABILITY: Added the **SUPPORTFOLDER** and **TEMPLATEFOLDER** commands, which open the corresponding folders in the File Explorer.

Differences Between Platforms and Levels

	Windows			Mac			Linux		
	Platinum	Pro	Classic	Platinum	Pro	Classic	Platinum	Pro	Classic
CAD functionality	●	●	●	●	●	●	●	●	●
2D constraints solving	●	●	●	●	●	●	●	●	●
Full lisp support	●	●	●	●	●	●	●	●	●
Chapoo connectivity	●	●	●	●	●	●	●	●	●
Direct modeling	●	●	-	●	●	-	●	●	-
Generated views	●	●	-	●	●	-	●	●	-
Rendering	●	●	-	●	●	-	●	●	-
VBA	●(1)	●(1)	-	-	-	-	-	-	-
BRX	●	●	-	●(2)	●(2)	-	●(2)	●(2)	-
3D constraints solving	●	●	-	●	●	-	●	●	-
3D constraints creation	●	-	-	●	-	-	●	-	-
Design intent recognition	●	-	-	●	-	-	●	-	-
Assembly modeling	●	-	-	●	-	-	●	-	-
BIM	●	-	-	●	-	-	●	-	-
Sheet metal	●(3)	-	-	●(3)	-	-	●(3)	-	-

(1) BricsCAD 32-bit (Windows) only

(2) Without MFC classes

(3) Optional - Requires a specific license.

View the complete [comparison chart](#) on the Bricsys website.

Related topics

[Licensing](#)

[Activation](#)

Installation

BricsCAD comes as a single download file.

Each major upgrade (V13, V14, V15, ...) is installed next to a previous version and can be installed in trial mode first.

BricsCAD can be installed on :

- Microsoft Windows 8, 7 and Vista on both 32 and 64 bits.
- Linux: Ubuntu, Fedora, OpenSUSE - 32bit, 64bit - gnome, kde
Ubuntu 9.04 or later, Fedora 11 or later, OpenSUSE 11.0 or later
- Mac OSX 10.8 or higher.

Related topics

[Silent Installation](#)

[Increase the memory limit](#)

Silent Installation

Silent installations are installations that run without a user interface. A normal (non-silent) installation receives the necessary input from the user in the form of responses to dialog boxes. However, a silent installation does not prompt the end user for input.

The user interface of an MSI installer (Microsoft Installer) typically queries the target system and displays an installation wizard (Setup Wizard) which enables the user to change various options that will affect the installation.

The same MSI can also perform a so-called 'quiet mode' or 'silent mode' installation whereby the User Interface of the Setup Wizard gets suppressed. This is done by running the msiexec.exe command-line utility with the /qn option (= quite no interface) and specifying on the command line all the information that the wizard would normally gather. Therefore, any actions that occur within the user interface sequence will not be performed during a 'silent' installation.

To silently perform a BricsCAD installation

1. Do one of the following:
 - open a Command Window, then change the directory (cd) to the location of the BricsCAD installer .msi file.
 - In the *Windows Explorer* dialog, browse to the location, then hold down the Shift key, right click and select *Open command window here* in the context menu.
2. Type *msiexec /i* then do one of the following:
 - type "*<BricsCAD installer filename>*" (e.g. "BricsCAD-Vxx.x.xx-x-en_US(x64).msi").
 - drag the BricsCAD installer file from the *Windows Explorer* dialog onto the command window.
3. Type */qn* at the command prompt.
4. (option) To suppress the adding of a Desktop Shortcut:
add *ADDDESKTOPSHORTCUT=""*.
5. (option) To suppress the display of the Release Notes when the installation completes:
add *SHOWRELEASENOTES=""*.
6. (option) To install BricsCAD in a specific folder, different from the default folder:
add *APPLICATIONFOLDER="your_app_folder"*
7. (option) To specify a folder for the license file if any of the properties *BRXLICENSEKEY*, *BRXLICENSEFILE* or *BRXLICENSESERVER* are defined. Default is *APPLICATIONFOLDER\BricsCAD.lic*.
add *BRXLICENSEDESTFILE="path_to_lic_file"*
8. (option) To activate the license and store it in the folder specified by *BRXLICENSEDESTFILE*:
add *BRXLICENSEKEY="your_license_key"*
9. (option) To copy the license file to the folder specified by *BRXLICENSEDESTFILE*:
add *BRXLICENSEFILE="your_license_file"*
10. (option) To create a license file in the folder specified by *BRXLICENSEDESTFILE*, containing the server host specification:
add *BRXLICENSESERVER="host"*, or *BRXLICENSESERVER="port@host"* if your license server is using a different port than the default port, being 5053.
11. (option on 32 BIT only) To not install VBA:
add *INSTALLVBA="0"* or *INSTALLVBA=""*
The complete entry at the command prompt might be: *msiexec /i "BricsCAD-Vxx.x.xx-x-en_US(x64).msi" /qn ADDDESKTOPSHORTCUT="" SHOWRELEASENOTES=""*
12. Press Enter to launch the installation.

- NOTES**
- For more options, type: `msiexec /?` at the command prompt.
 - On the Microsoft website, you can find [more information](#) about the `msiexec` command.

Related topics

[Installation](#)

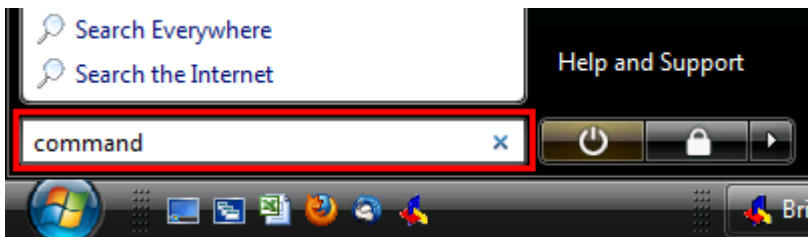
[Increase the memory limit](#)

Increase the Memory Limit

Until V10 the limit of the amount of memory that could be used by BricsCAD was around 1.6 GB. In V11 or higher this limit has been increased to 4 GB on 64 bit systems and 3 GB on 32 bit systems. On 32 bit systems additional manual changes to the boot process are required.

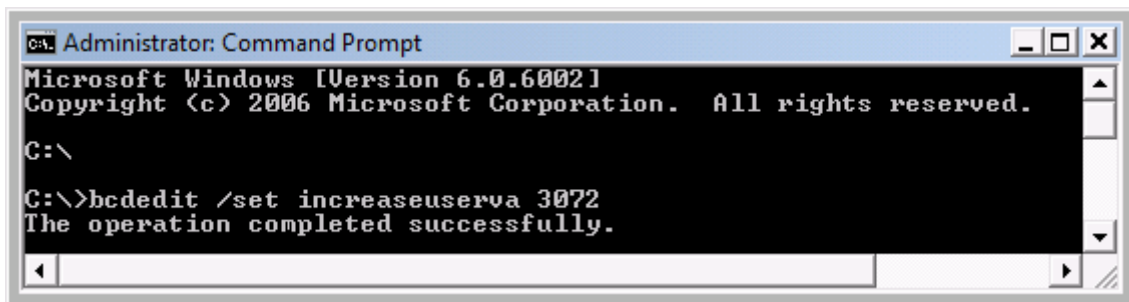
On a 32 bit *Windows Vista* or *Windows 7* system do the following:

1. Click the *Start* button () on the left hand side of the Windows task bar.
2. Type *command* in the Windows *Start Search* field, then press Enter.



The *Administrator Command Prompt* window opens.

3. Type `bcdedit /set increaseuserva 3072` in the *Administrator Command Prompt* window, then press Enter.

A screenshot of the Administrator Command Prompt window. The title bar reads 'Administrator: Command Prompt'. The window content shows the following text:

```
Microsoft Windows [Version 6.0.6002]
Copyright (c) 2006 Microsoft Corporation. All rights reserved.

C:\>
C:\>bcdedit /set increaseuserva 3072
The operation completed successfully.
```

The memory limit is increased to 3GB.

4. Close the *Administrator Command Prompt* window.

Related topics

[Installation](#)

[Silent Installation](#)

Licensing

Overview

BricsCAD is available with three types of commercial licenses combined to two platforms and three feature levels:

- Commercial licenses: Single, Volume, Network
- Platforms: Windows, Mac, Linux
- Feature levels: Classic, Pro, Platinum

See also the [differences between platforms and between levels](#).


BricsCAD can also run in [trial mode](#) for evaluation.

 [Run your BricsCAD trial as Classic, Pro or Platinum](#) 

NOTE • The procedure described in this chapter is also valid for the Sheet Metal and Communicator modules.

View your Licenses

All your valid licenses can be viewed on the Bricsys website.

1. Log in to the Bricsys website.
Make sure you log in with the Bricsys account containing your licenses. Contact your Bricsys account manager if needed.
2. In the upper right corner, click on your name. Your account page opens.
3. In the left menu choose [Licenses and support contracts](#) .
All your active licenses are displayed.
4. (Optional) Click a license to see its details.

Manage your Licenses

Depending on the type and status, licenses can be activated, modified and deactivated.

Use the [activation](#) to:

- Activate a trial license.
- Activate a Single or Volume license.
- Use a Network license (beforehand activated on a network license server).

Use the [modification](#) to:

- Upgrade a license (e.g. from Single Classic to Single Platinum).
- Replace a license (e.g. a Single Classic by a Network Pro).

Use the [deactivation](#) to:

- Migrate a license to another computer.
- Deactivate a license.
- Be able to reactivate a license after installing a new hard disk, changing partitions or upgrading the operating system.

BricsCAD Communicator

To manage a BricsCAD Communicator license

1. In the *Help* menu, select the *BricsCAD Communicator License...* option.
The *Bricsys License Manager* dialog opens.
2. Use the same procedures as for activate, modify, deactivate a BricsCAD license.

Related topics

[Activate a trial license](#)

[Activate a Single or Volume license](#)

[Use a Network license](#)

[Modification](#)

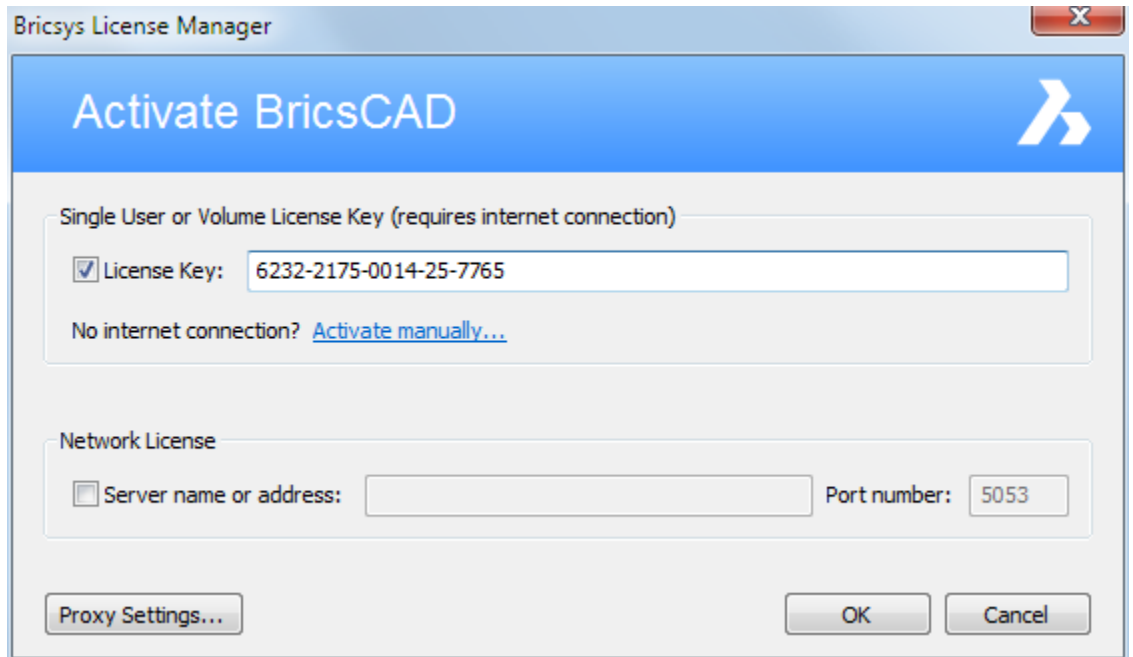
[Deactivation](#)

Proxy Settings

Some computers connect to a network or the internet through a proxy server. Therefore the proxy settings should be configured before activating or deactivating a license.

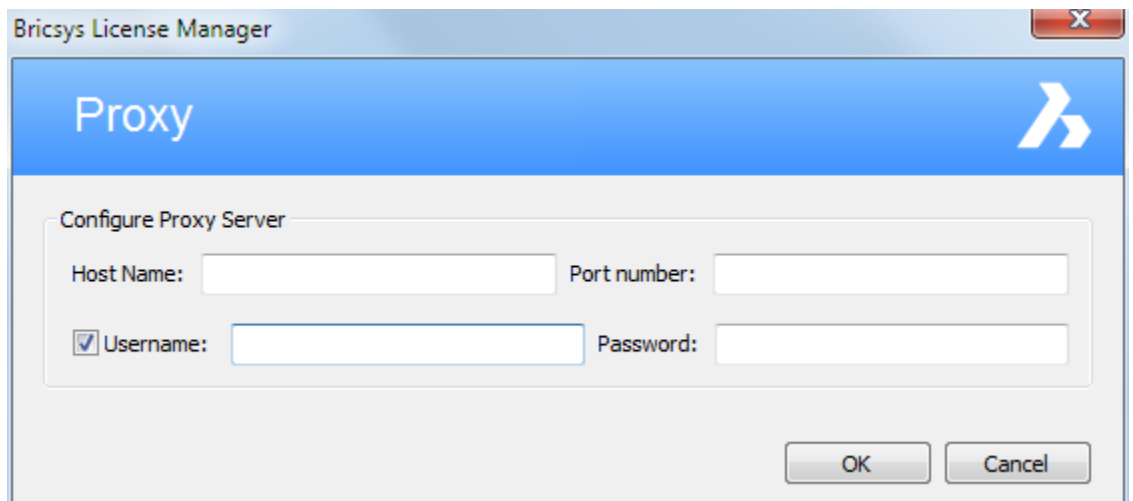
To configure the proxy settings

1. In the **Activate Bricsys** or the **License Information** dialog, click the *Proxy Settings...* button.



The **Proxy** dialog opens.

2. In the *Proxy* dialog, fill out the necessary fields.



3. Click the **OK** button to continue.

NOTE The proxy settings configuration remains active for the current BricsCAD session only. If you need to reactivate or deactivate a license in future session, you will have to reconfigure the proxy settings.

To configure the proxy settings permanently for Network License use

Using a Network license, BricsCAD needs to connect to the license server each time a session is opened. Therefore the proxy settings should be configured permanently.

Proceed as follows on the computer where BricsCAD is running:

1. Create the **HTTP_PROXY** system variable:

HTTP_PROXY=[LicenseServer]:[PortNumber]

2. (Optional) If the proxy server supports basic authentication, create the **HTTP_PROXY_CREDENTIALS** variable:

HTTP_PROXY_CREDENTIALS=[UserName]:[Password]

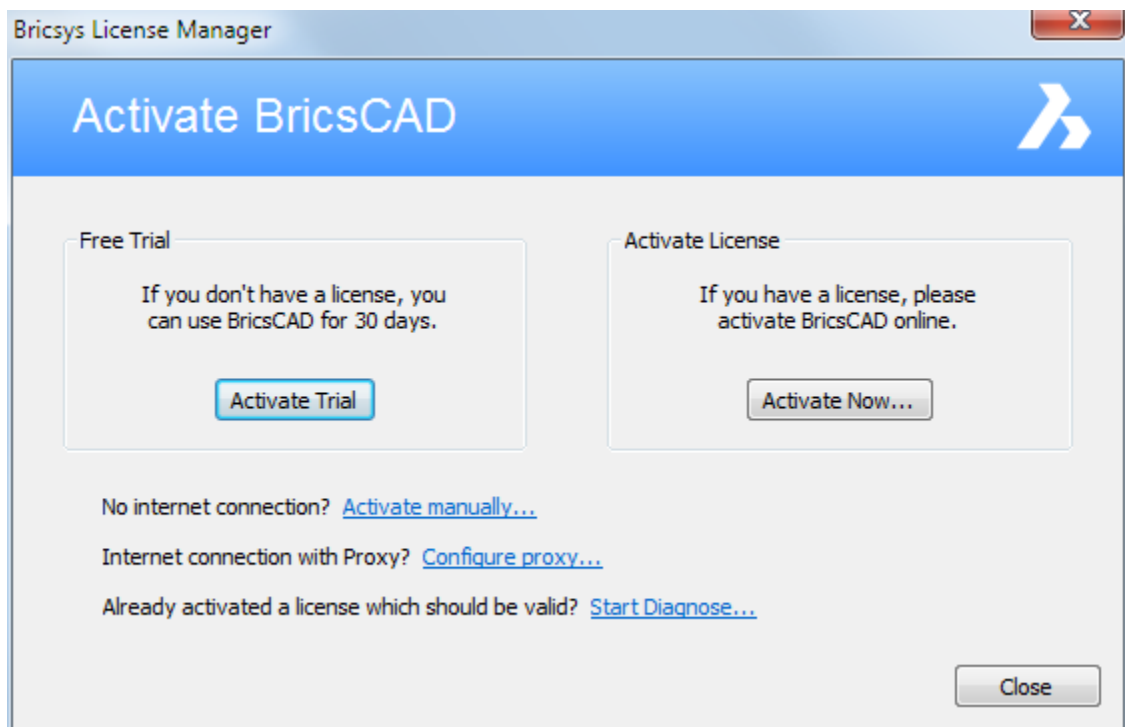
Activation

First Run

Use this procedure to:

- Activate a trial license.
- Activate a Single or Volume license.
- Use a Network license (beforehand activated on a license server).

The **Activate BricsCAD** dialog opens.



1. If your computer connects to the Internet through a proxy server, click the *Configure proxy...* link to [configure the proxy settings](#).
2. Do one of the following:
 - Click the **Activate Trial** button to [activate a trial](#).
 - Click the **Activate Now...** button to [activate a Single or Volume license](#), or to [use a Network license](#).

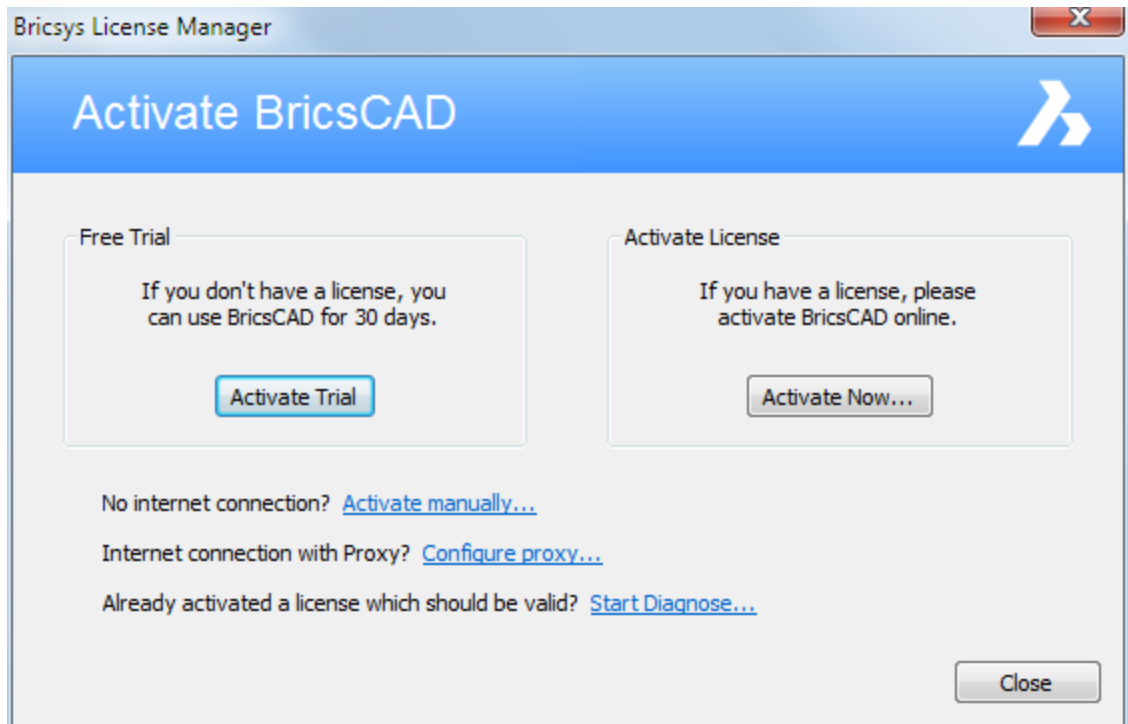
Trial Mode

BricsCAD can run in trial mode for a 30 days period. After this period, a valid commercial license needs to be activated.

To activate BricsCAD in trial mode

If your computer is not connected to the Internet, activation can be done manually via another computer (which is connected to the Internet). See [Activate a trial manually](#).

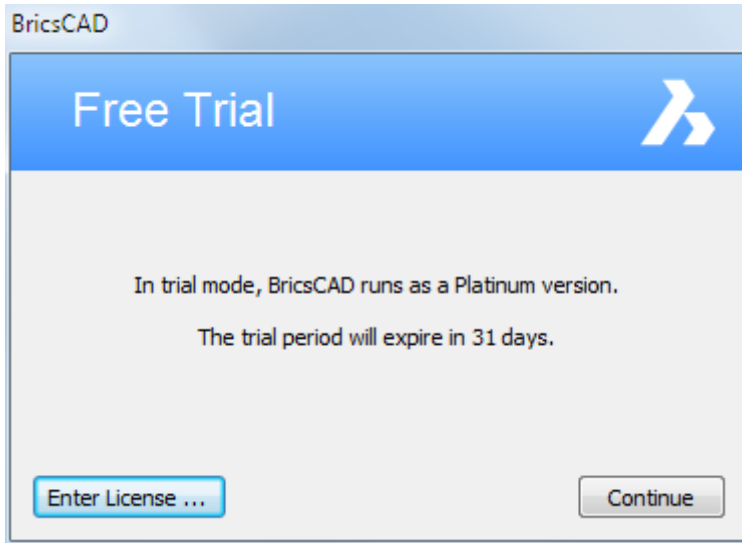
1. Launch the BricsCAD executable, e.g. double click the BricsCAD desktop icon. The *Bricsys License Manager - Activate BricsCAD* dialog opens.



2. If your computer connects to the Internet through a proxy server, click the *Configure proxy...* link to [configure the proxy settings](#).
3. Click the *Activate Trial* button.

Running BricsCAD in trial mode

Each time you start BricsCAD in trial mode the BricsCAD - Free Trial dialog opens.



- Click the Continue button to open BricsCAD in trial mode.
- Click the [Enter License...](#) button to [activate a Single or Volume license](#), or to [use a Network license](#).

Feature levels

In trial mode BricsCAD runs as full Platinum version without any feature restrictions.

The RunAsLevel preference setting allows to run BricsCAD in a lower license level mode, e.g. a Platinum version can be run as a Pro or a Classic, a Pro can be run as a Classic.

This facilitates evaluation of the features available for each license level.

1. In BricsCAD, in the Settings dialog box, go to the RunAsLevel preference or, on the command line, type "RunAsLevel".
2. Enter the value for the level you want to try: 0 = Classic, 1 = Pro, 2 = Platinum (default).
3. Restart BricsCAD to apply the changes.

Related topics

[Configure the proxy settings](#)

[Activate a Single or Volume license](#)

[Use a Network license](#)

[Manage a BricsCAD Communicator license](#)

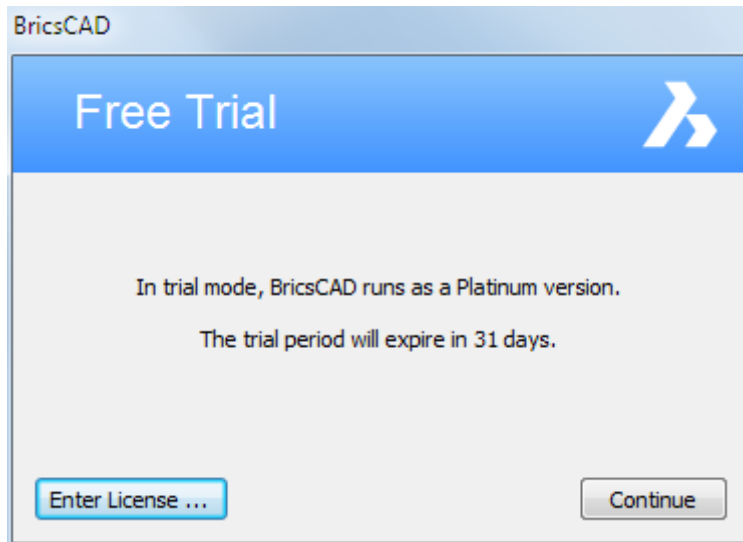
[Bricsys Knowledge Base](#) 

When Starting BricsCAD in Trial mode

Use this procedure to:

- Activate a Single or Volume license.
- Use a Network license (beforehand activated on a license server).

The **Free Trial** dialog opens.



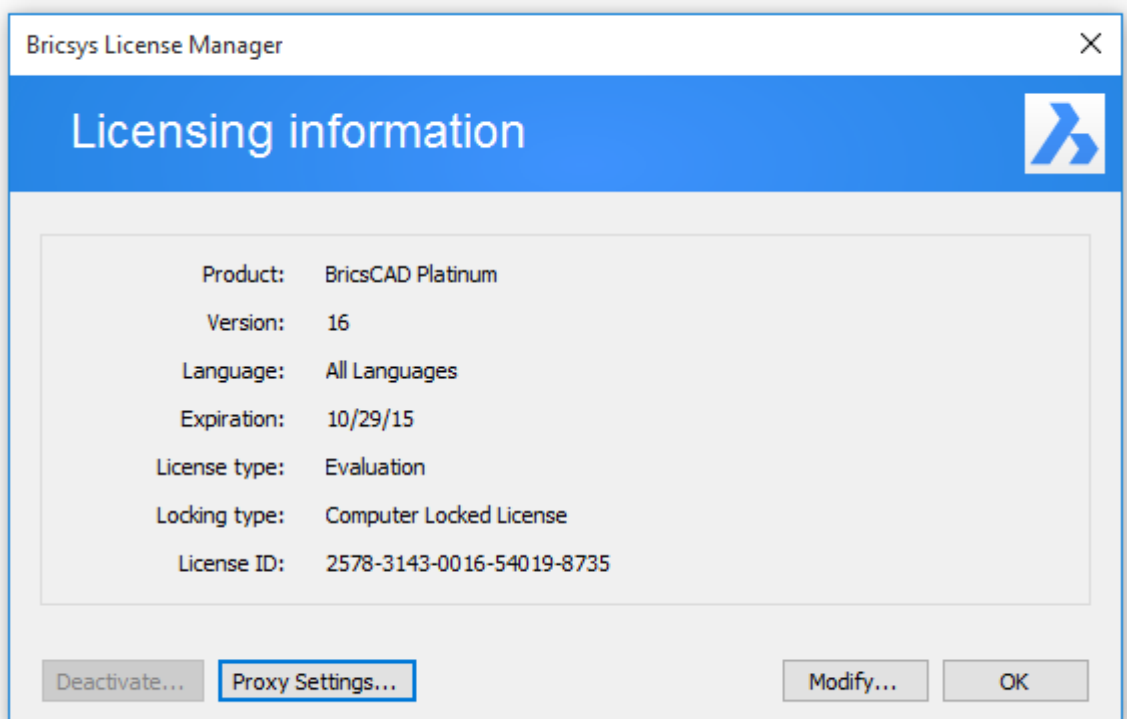
Click the **Enter License...** button to [activate a Single or Volume license](#), or to [use a Network license](#).

Replacing or Upgrading an Existing License

Use this procedure to:

- Activate a Single or Volume license.
- Upgrade a license (e.g. from Single Classic to Single Platinum). The old key is no longer valid then.
- Replace a license (e.g. a Single Classic by a Network Pro). The old key is deactivated automatically and is available to be activated on another computer.

1. In the *Help* menu, choose *License Manager....* The *Bricsys License Manager* dialog opens.
2. In the *Bricsys License Manager* dialog, click the *Licenses...* button next to the application you want to manage the license. The *Licensing Information* dialog opens.



3. Click the *Modify...* button to activate another Single or Volume license, or to use another a Network license.

Related topics

[Configure the proxy settings](#)

[Activate a trial license](#)

[Activate a trial license manually](#)

[Activate a Single or Volume license](#)

[Activate a Single or Volume license manually](#)

[Use a Network license](#)

[Manage a BricsCAD Communicator license](#)

[Bricsys Knowledge Base](#) 

By license type

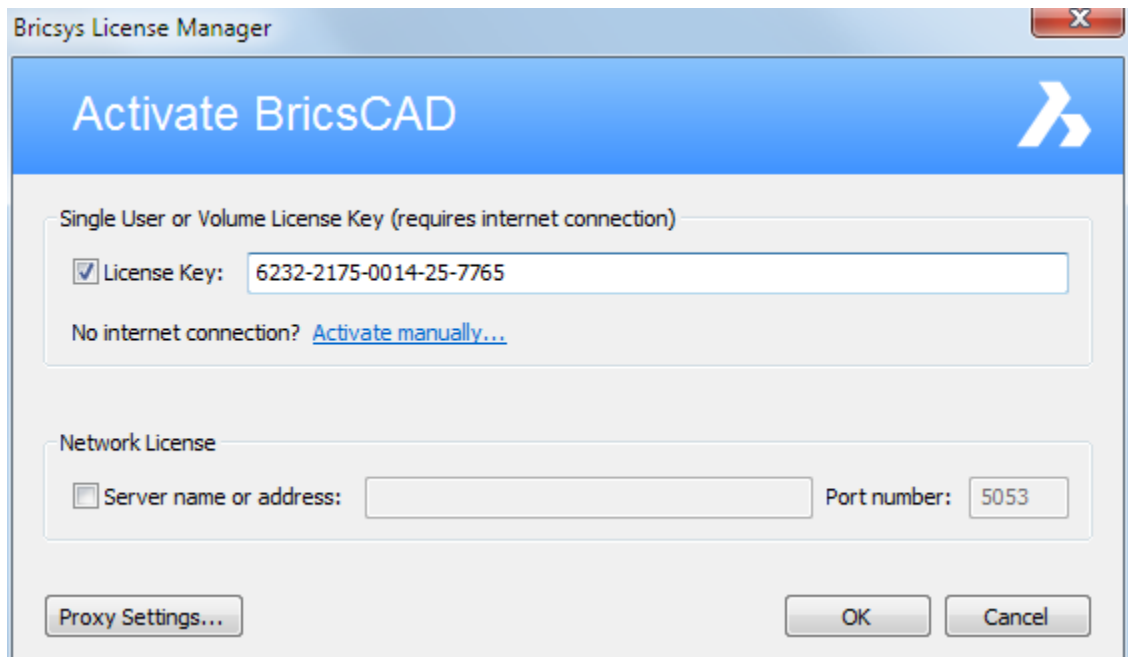
To activate a Single or Volume license

If your computer is not connected to the Internet, activation can be done manually via another computer (which is connected to the Internet). See [Activate a Single or Volume license manually](#).

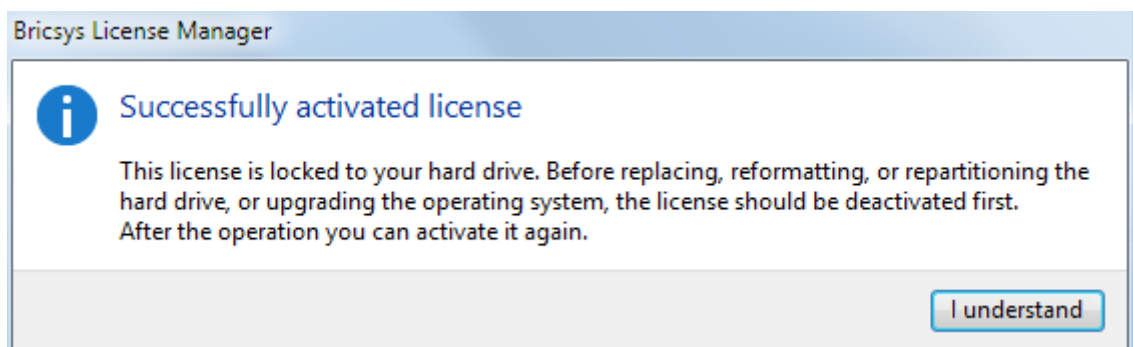
- Do one of the following:
 - The first time BricsCAD is started - In the Activate BricsCAD dialog, click the *Activate Now...* button.
 - When starting BricsCAD in trial mode - In the Free Trial dialog, click the Enter License... button.
 - When replacing or upgrading an existing license - In the Help menu, choose BricsCAD License... . The Licensing Information dialog opens. Click the *Modify...* button.**

The Activate BricsCAD dialog opens.

- Check the *Single User or Volume License Key* option.
- Enter or copy/paste your license key in the *License Key* field.



- If your computer connects to the Internet through a proxy server, click the *Proxy Settings...* button to [configure the proxy settings](#).
- Click the *OK* button.



Related topics[Configure the proxy settings](#)[Manage a BricsCAD Communicator license](#)[Bricsys Knowledge Base](#)**Network License**

Before using the following procedure, the network administrator needs first to [set up a network license server](#). The license server must be started and the Network license must be activated on the server.

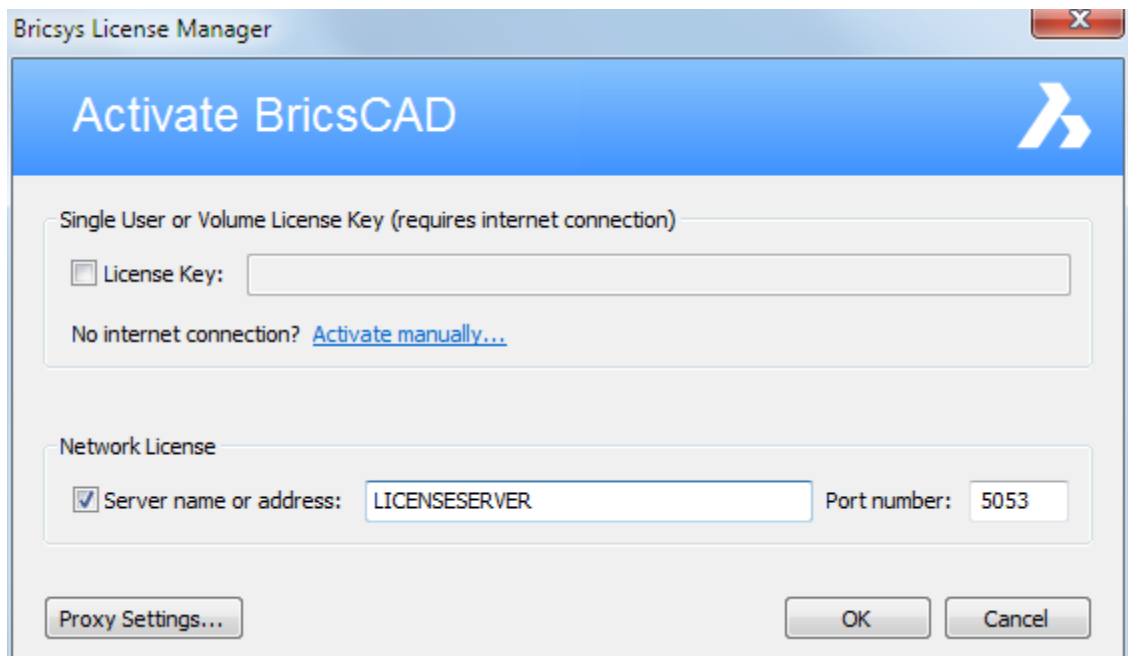
To use a network license on a client computer

Once the Network license is activated on the license server, the Network license can be used on clients computers.

1. Do one of the following:
 - The first time BricsCAD is started - In the Activate BricsCAD dialog, click the *Activate Now...* button.
 - When starting BricsCAD in trial mode - In the Free Trial dialog, click the Enter License... button.
 - **When replacing or upgrading an existing license - In the Help menu, choose BricsCAD License... . The Licensing Information dialog opens. Click the *Modify...* button.**

The Activate BricsCAD dialog opens.

2. Check the *Network License* option.
3. Type the host name or IP address of the license server in the *Server name or address* field.



4. (Optional) Type the port number in the *Port Number* field.
5. If your computer connects to the license server through a proxy server, click the *Proxy Settings...* button to [configure the proxy settings for a network license](#).
6. Click the *OK* button.

Roaming

Before setting up roaming on a client machine, make sure that it can obtain a license the regular way. On the client machine, set the environment variable RLM_ROAM to the number of days which you would like to use the license (this license will be available until midnight on the last day of the roam, so for example if you specify one day, the license is available until midnight tomorrow). Once RLM_ROAM is set, run BricsCAD and let it check out its license. If the checkout succeeds, then the license is set up to roam.

RLM_ROAM	Roamed license present & connected to license server	Roamed license present & disconnected from license server	No roamed license present & connected to license server
Not set	Floating license checked out	Roamed license is used	Floating license checked out
-1	Roamed license returned to license server	Attempt to check out from license server - fails	Attempt to check out from license server - fails
0	Roamed license is used	Roamed license is used	Floating license checked out
>0	Roam period extended until RLM_ROAM days from today	Roamed license is used	Roamed license set up until RLM_ROAM days from today

See also [Roaming](#) on the server side.

To set the environment variable RLM_ROAM

1. From the Control Panel, click the System and Security category, then the System subcategory.
2. Click on Advanced System Settings.
3. Click the Environment Variables... button.
4. Click the New... button.
5. In the Variable Name field, enter RLM_ROAM.
6. In the Variable Value field, set the number of days you would like to use the license.
7. Click the OK button to set the Environment variable
8. Click the OK button to close the Environment Variables dialog.

Related topics

[Configure the proxy settings](#)

[Network license server setup](#)

[Roaming licenses \(server side\)](#)

[Manage a BricsCAD Communicator license](#)

[Bricsys Knowledge Base](#) 

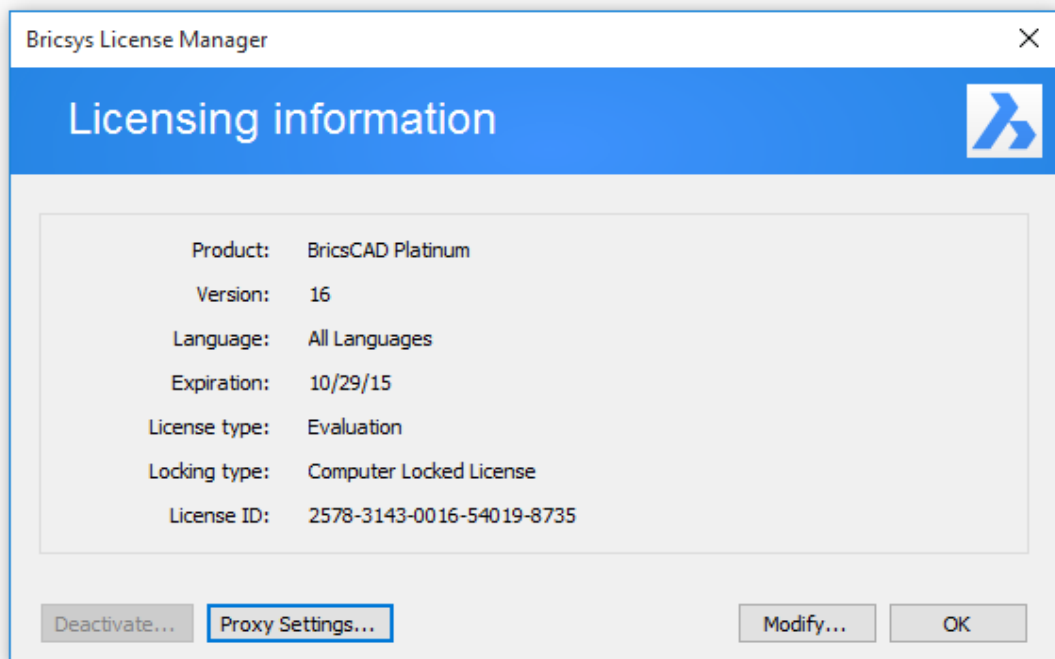
Modification

The BricsCAD license modification always requires an Internet connection.

To modify a BricsCAD license

Use this procedure to to:

- Upgrade a license (e.g. from Single Classic to Single Platinum). The old key is no longer valid then.
 - Replace a license (e.g. a Single Classic by a Network Pro). The old key is deactivated automatically and is available to be activated on another computer.
1. In the *Help* menu, choose *BricsCAD License...*. The *Licensing information* dialog opens.



2. Click the *Modify...* button to [activate another Single or Volume license](#), or to [use another a Network license](#).

Related topics

[Configure the proxy settings](#)

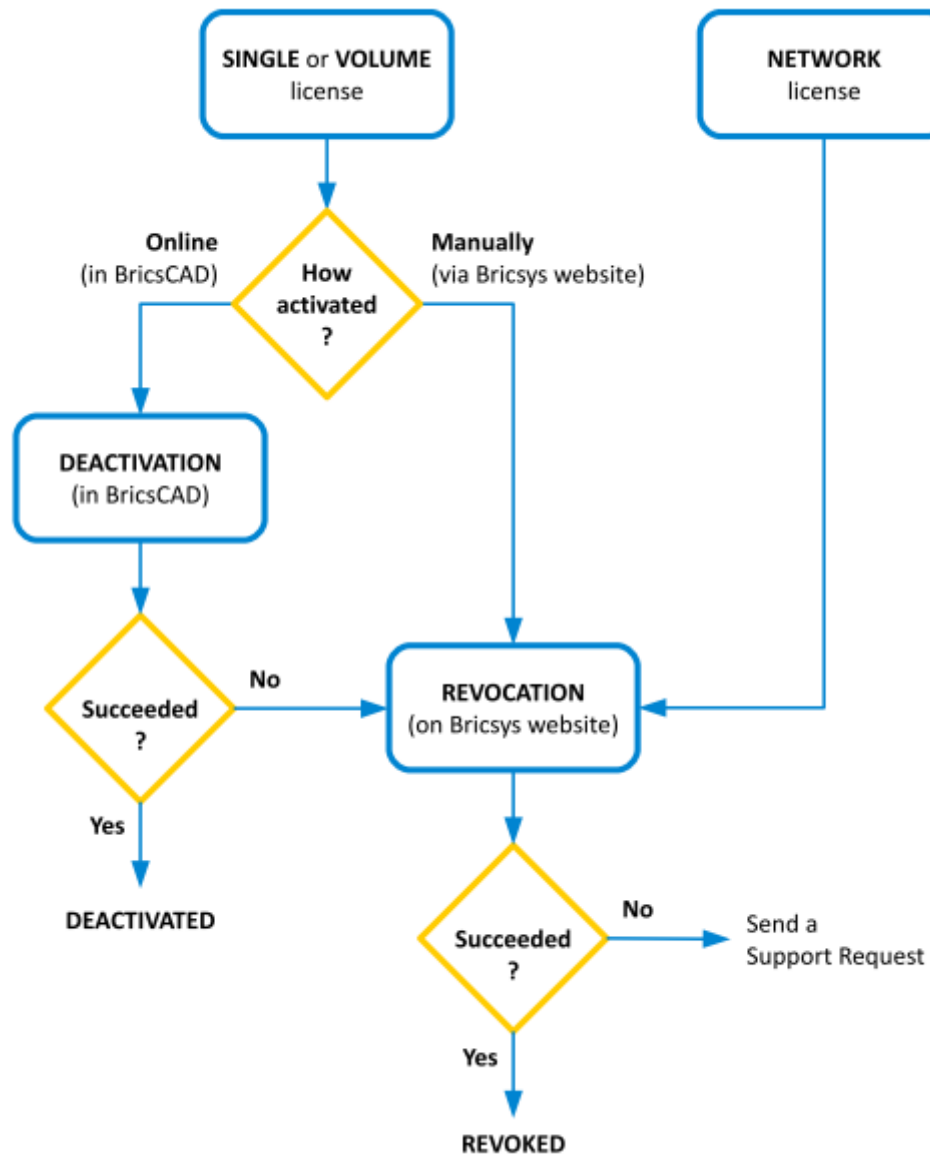
[Manage a BricsCAD Communicator license](#)

Deactivation

The BricsCAD license deactivation always requires an Internet connection. Licenses cannot be deactivated manually via another computer (which is connected to the Internet).

Single and Volume licenses manually activated, Network and trial licenses cannot be deactivated.

The chart below explains how a BricsCAD license can be deactivated. If the deactivation is not possible, the license can be revoked.

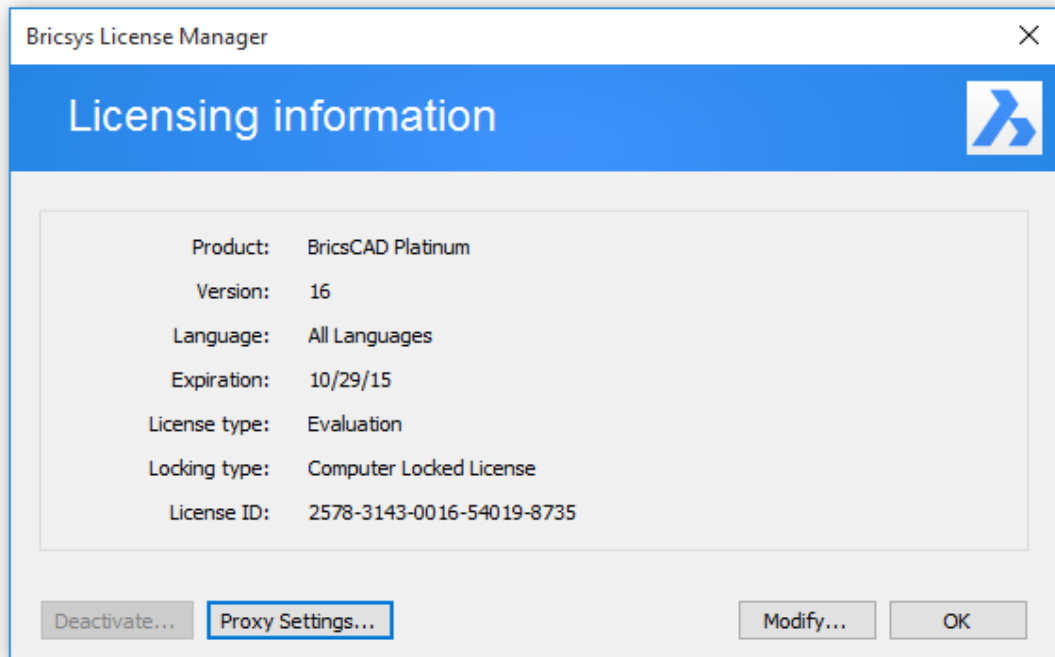


To deactivate a license

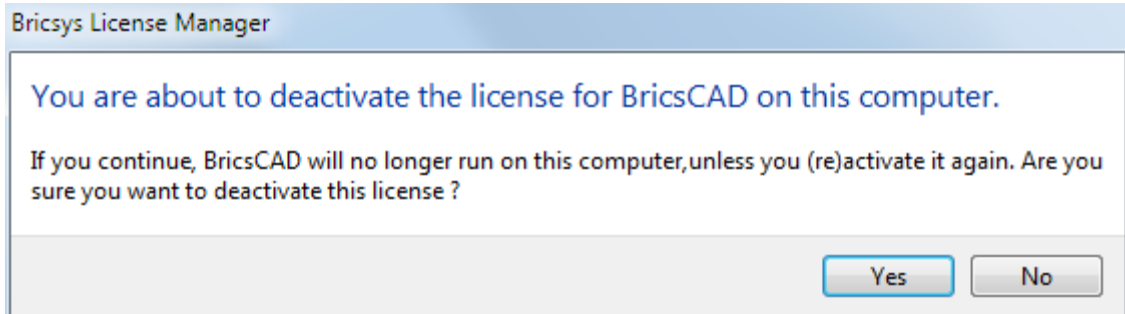
Use this procedure to:

- Migrate a license to another computer.
- Remove BricsCAD permanently from a computer.
- Be able to reactivate BricsCAD after installing a new hard disk, changing partitions or upgrading the operating system.

1. In the *Help* menu, choose *BricsCAD License...*. The *Licensing information* dialog opens.



2. If your computer connects to the Internet through a proxy server, click the *Proxy Settings...* button to [configure the proxy settings](#).
3. Click the *Deactivate...* button.



4. Click the *Yes* button on the confirmation dialog box to deactivate the license.

The license is deactivated now and is available to be activated on another computer.

To revoke a license


In last resort, only if deactivation is not possible.

Use this procedure to:


- Deactivate a Single or Volume license manually activated, or a Network license.
- Be able to reactivate BricsCAD after a hard disk crash.
- Be able to reactivate BricsCAD after installing a new hard disk, changing partitions or upgrading the operating system.
- Migrate a license to another computer.
- Remove BricsCAD permanently from a computer.

1. Go to the Bricsys website.
2. In the *Support* menu, choose *My Account* (login required).
Make sure you log in with the Bricsys account containing your licenses. Contact your Bricsys account manager if needed.

The *My Account* page opens.

3. In the left menu choose *Licenses and support contracts* .

All your active licenses are displayed.

4. Next to the license you want to revoke, click the *Manage...* button then click the *Revoke Activation* icon .

Related topics

[Configure the proxy settings](#)

[Manage a BricsCAD Communicator license](#)

Network license server

To make a Network license available in BricsCAD on client computers, a network license server from *Reprise Software* needs to be installed first by the network administrator.

The *Bricsys Network License Manager* is a separate program which will install the server.

After starting the network license server, it can be completely configured by using a web interface.

Just like BricsCAD needs a license file to run, the server also needs a Network license file that can be activated online or manually.

A Network license can only be activated once and it is locked to the server.

Once the Network license is activated and the server is started, it is possible to use the Network license in BricsCAD, on a client computer.

Related topics

[Windows network license server setup](#)

[Linux network license server setup](#)

[Server administration](#)

[Use a Network license](#)

[Bricsys Knowledge Base](#) 

[RLM License Administration Manual](#) 

[RLM](#) 

Windows server setup

Install the Bricsys Network License Manager

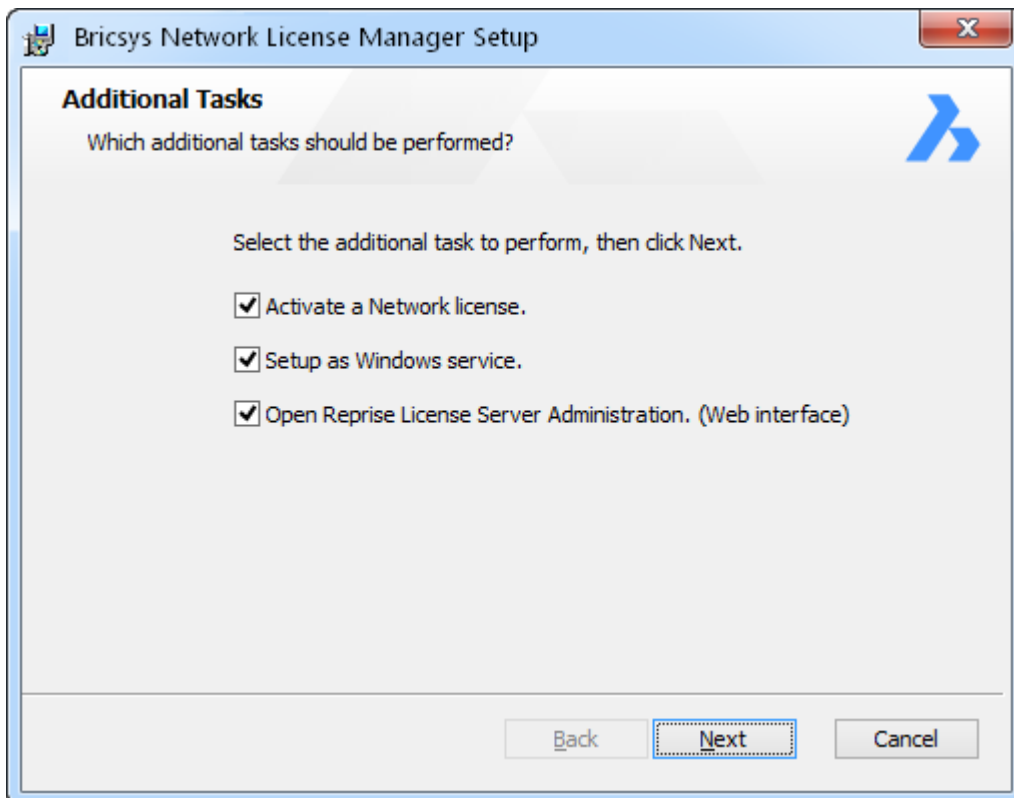
Download and install the Bricsys Network License Manager on the computer that is used as network license server.

Download Bricsys Network License Manager (Windows)

Double-click the installation MSI file in order to proceed with the installation:

1. Accept the terms of End User License Agreement
2. Accept the Destination folder
3. Click the Install button

The Additional Tasks dialog displays 3 options. If checked, these options will be performed after the installation.



Activate a Network license

After the installation, opens the Bricsys Network License Manager, asking you to activate a Network license.

You can later open the Bricsys Network License Manager by clicking the License activation shortcut in the Start menu.

Setup as Windows service

Each time you start Windows, the license server will be automatically started as a service.

Open Reprise License Server Administration (Web interface)

After the installation, open the Reprise License Server Administration web interface where you can manage all about the network license.

You can later open the Reprise License Server Administration by clicking the License Server Administration shortcut in the Start menu.

NOTE By default, these 3 options are disabled when installing via the command line. See [Installation from the command line](#).

New installation

In the Additional Tasks dialog, all options should be checked.

To install a new network license on an existing license server

1. In the Start menu, click the License activation shortcut to open the Bricsys License Manager.
2. In the Bricsys License Manager, enter the new network license, then click the OK button.
3. In the Start menu, click the License server administration shortcut to open the Reprise License Server Administration.
4. In the Reprise License Server Administration, click the Reread/restart servers option in the left menu.
5. Click the REREAD/RESTART button.

To upgrade the Bricsys Network License Manager

Download and install the Bricsys Network License Manager on the computer is used as network license server.

In the Additional Tasks dialog, all options should be unchecked.

The installation restarts the license server.


Installation from the command line

The Network License Manager can be installed from the command line.

By default, options Activate a Network license, Setup as Windows service and Open Reprise License Server Administration (Web interface) are disabled when installing via the command line.

To enable these options, use the respective parameters *ACTIVATELICENSE*, *INSTALLSERVICE* and *OPENWEBINTERFACE*.

For example, **msiexec /qb /i Bricsys-NetworkLicenseManager.msi ACTIVATELICENSE=1 INSTALLSERVICE=1** will just show the activation dialog and install as a service without showing the web interface.

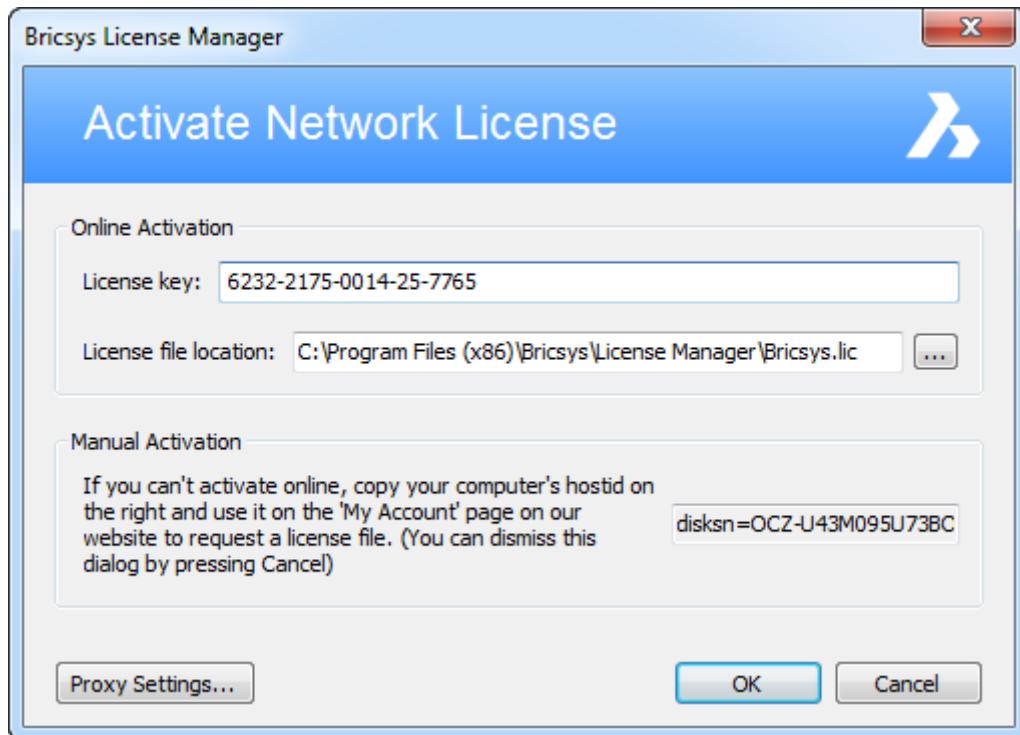
- NOTES**
- For more options, type: *msiexec /?* at the command prompt.
 - On the Microsoft website, you can find [more information](#)  about the *msiexec* command.

Activate the Network license

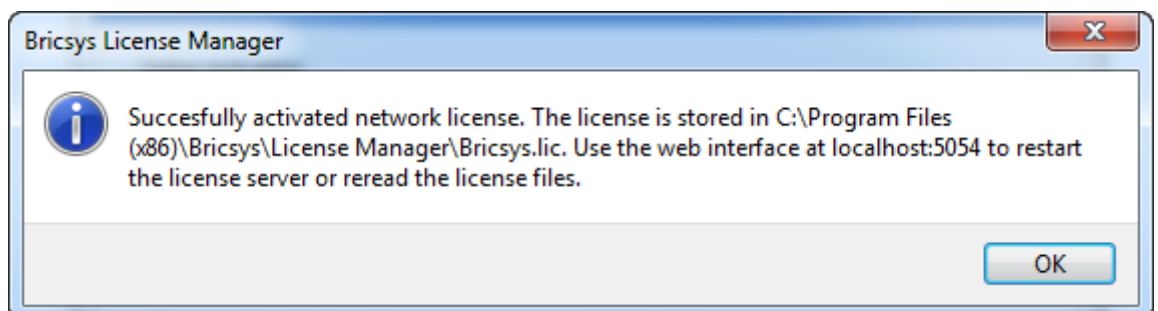
The Network license must be activated on the license server.

If your computer is not connected to the Internet, activation can be done manually via another computer (which is connected to the Internet). See [Activate a Network license manually](#).

1. In the Start menu, click the License Activation shortcut. The Activate Network License dialog box opens.



2. In the License key field, enter your Network license.
3. In the License file location field, the location of the license file must be the Bricsys Network License Manager installation folder.
4. Click the OK button.



NOTE Network licenses cannot be deactivated.

Start the Network license server

The Network license server is automatically started/restarted after the installation. However, you can start it manually if necessary.

In the Start menu, click the License Server shortcut.

The server is now started and can be now configured via the [Network License Server Administration](#).

Once the Network license is activated and the server is started, the server is ready to serve licenses.

It is now possible to [use the Network license](#) in BricsCAD, on a client computer.

Roaming

With a Network license, you have the ability to allow a floating license to roam to a system which will subsequently be disconnected from the network. The resulting license can be used for the number of days specified when the license was set to roam, and is checked back in automatically at the end of this time. In addition, you can return the roamed license back to the license pool early if this is desired.

The license file(s) on the network license server contain(s) a parameter *max_roam_count*. This is set to the total number of seats on a network license by default.

See also [Roaming](#) on the client side.

Related topics

[Configure the proxy settings](#)

[Linux Network license server setup](#)

[Server administration](#)

[Use a Network license](#)

[Roaming licenses \(client side\)](#)

[Bricsys Knowledge Base](#) 

[RLM License Administration Manual](#) 

[RLM FAQ](#) 

Linux server setup

Download and install the Bricsys Network License Manager on the computer that will be used as network license server.

Download Bricsys Network License Manager (Linux)

1. Extract Bricsys-NetworkLicenseManager.tgz into any folder (command line: `tar xvzf Bricsys-NetworkLicenseManager.tgz`).
2. Start the application `rlm` in that folder (command line in that folder: `./rlm`).
3. Open a browser at <http://localhost:5054>.
4. On that web page, click the **System Info** button on the left. Copy an ethernet hostid and use this to activate your license on your **My Account** page on the Bricsys website.
5. When you download a license file from the Bricsys website, store it in the folder where you extracted Bricsys-NetworkLicenseManager.tgz.
6. Click the **Reread/Restart Servers** button.
7. Click the **Status** button to see the server status, on the next page click the **bricsys** button in the table to view Bricsys licenses.
8. Click the **RLM Manual...** button to learn how to configure the license server in detail. Among other things, it is explained on that page how to automatically start `rlm` when the server boots.

Once the Network license is activated and the server is started, the server is ready to serve licenses.

It is now possible to [use the Network license](#) in BricsCAD, on a client computer.

Related topics

[Configure the proxy settings](#)

[Windows Network license server setup](#)

[Server administration](#)

[Use a Network license](#)

[Bricsys Knowledge Base](#) 

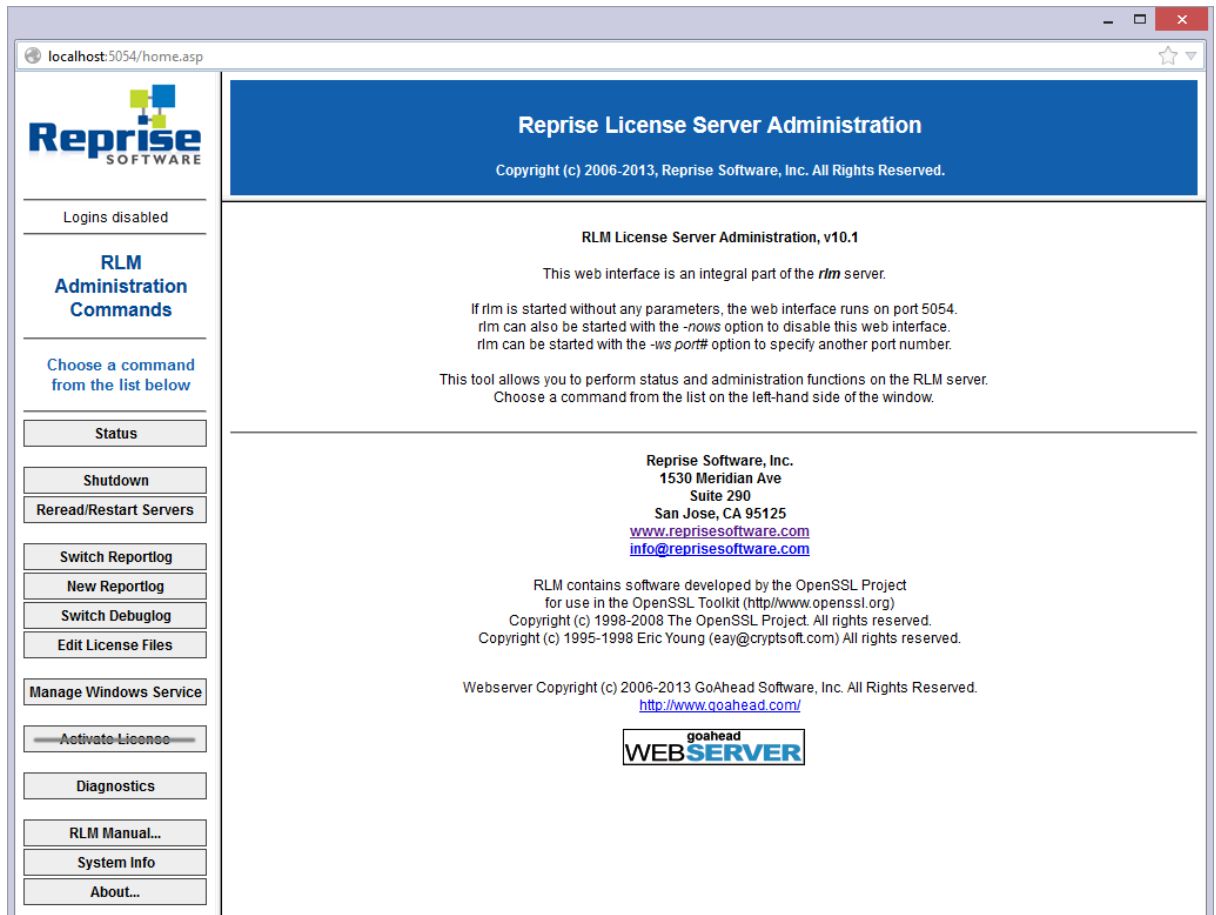
[RLM License Administration Manual](#) 

[RLM FAQ](#) 

License server administration

The web interface

1. (If the network license server is not running) In the Start menu, click the License Server shortcut (on Windows Vista or higher: right-click > Run as administrator). A console window opens.
2. Start a web browser.
3. Go to <http://localhost:5054>. The Reprise License Server Administration web interface opens.



- NOTES**
- Do not use the Activate License button!
 - To get an overview of all options, click the RLM Manual... button on the left or go to the [RLM License Administration Manual](#).

Start the server automatically

The network license server can be started automatically when booting the license server computer.

- NOTES**
- On Windows Vista or higher, the network license server must be started with administrator rights. Otherwise the service installation will fail. See [Start the Network license server](#).
 - The procedure below is for servers on Windows platform only. To automatically start a network license server on a Linux platform, see the [RLM License Administration Manual](#).

To start the server automatically

1. Click the Manage Windows Service button on the left. The Manage Windows Service for RLM license server page opens.

The screenshot shows a web browser window at localhost:5054/home.asp displaying the Reprise License Server Administration interface. The page title is "Reprise License Server Administration" with a copyright notice for 2006-2013. The main heading is "Manage Windows Service for RLM license server". Below this, a grey box contains the instruction: "This form installs or removes a Windows Service to automatically start the RLM license server. Select the action to perform, fill in the form, and press 'Apply'".

On the left side, there is a sidebar with "RLM Administration Commands". The "Manage Windows Service" button is highlighted with a red box. Other buttons include Status, Shutdown, Reread/Restart Servers, Switch Reportlog, New Reportlog, Switch Debuglog, Edit License Files, Activate License, Diagnostics, RLM Manual..., System Info, and About....

The "Service Definition" section contains the following fields:

- Service Action:
- Service Name:
- Service Description:
- Server Debug Log:
- Server License File Directory:
- Webserver port #:
- ISV server startup delay (seconds):
- Admin webserver disabled:
- rlmdown command disabled:
- rlmremove command disabled:

At the bottom right, there are "Apply" and "Cancel" buttons.

2. Click the Apply button.

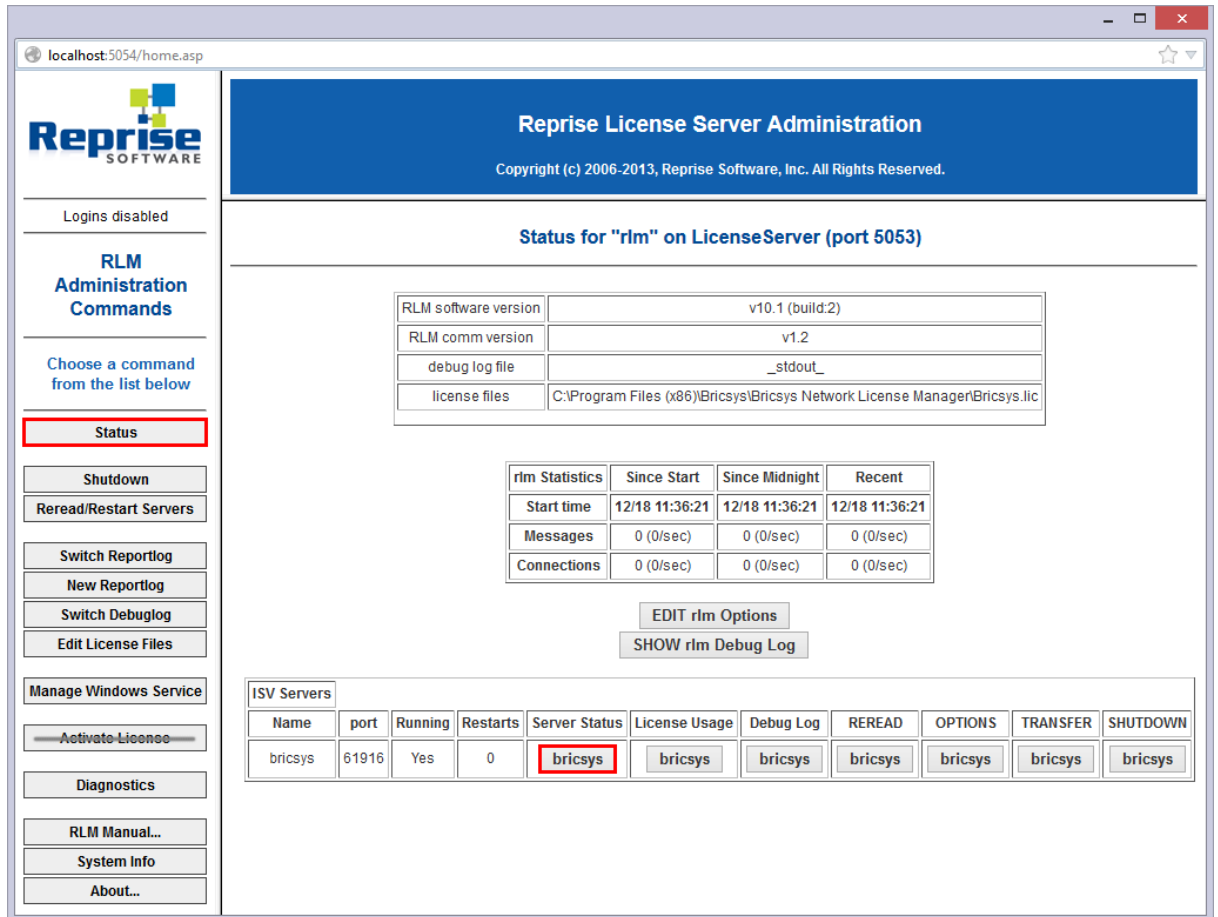
The service is now installed but not started because the server is already running.

The next time the server computer will be booted, the service will start the network license server automatically.

Check the license and server status


You can check the status of all network licenses and of the server.

1. Click the Status button on the left. The page Status for "rlm" on [LicenseServer] (port 5053) opens.



2. Click the bricsys button in the Server Status column of the ISV Servers table to view the status of the Bricsys Network license.

localhost:5054/home.asp
✖



Reprise
SOFTWARE

Reprise License Server Administration

Copyright (c) 2006-2013, Reprise Software, Inc. All Rights Reserved.

Logins disabled

RLM
Administration
Commands

Choose a command
from the list below

Status

Shutdown

Reread/Restart Servers

Switch Reportlog

New Reportlog

Switch Debuglog

Edit License Files

Manage Windows Service

— Activate License —

Diagnostics

RLM Manual...

System Info

About...

ISV bricsys status on LicenseServer (port 61916)

bricsys software version	v10.1 (build:2)
bricsys comm version	v1.2
debug log file	_stdout_
report log file	_n/a_

bricsys Statistics	Since Start	Since Midnight	Recent
Start Time	12/18 11:36:21	12/18 11:36:22	12/18 12:06:51
Messages	10 (0/sec)	10 (0/sec)	10 (0/sec)
Connections	4 (0/sec)	4 (0/sec)	4 (0/sec)
Checkouts	0 (0/sec)	0 (0/sec)	0 (0/sec)
Denials	0 (0/sec)	0 (0/sec)	0 (0/sec)
License Removals	0 (0/sec)	0 (0/sec)	0 (0/sec)
Current Connections	0		

License pool status

Product	Pool	Ver	Expires	count	soft lim	inuse	res	timeout	share	transactions	Show License Usage
bricscad	1	14	permanent	2	2	0	0	0	None	0	usage...

Enter license password to select license results. Only licenses with matching passwords (or with no passwords) will be displayed above.

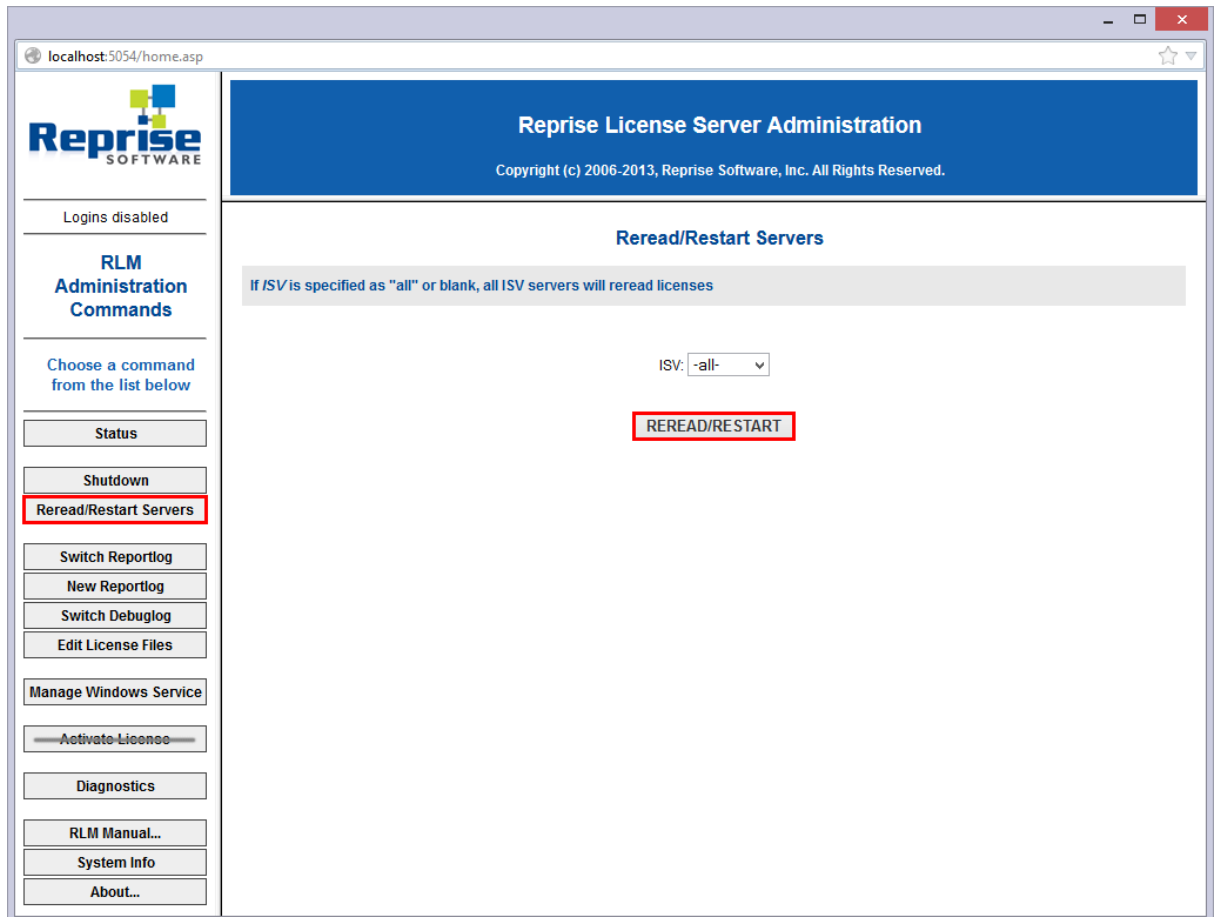
License Password:

37

Reread the license / Restart the server

After activating a Network license while the server was running, you have to reread the license / restart the server.

1. Click the Reread/Restart Servers button on the left. The Reread/Restart Servers page opens.



2. Click the Reread/Restart Servers button. The server restarts and rereads the Network license.

Related topics

[Configure the proxy settings](#)

[Windows network license server setup](#)

[Linux network license server setup](#)

[Use a Network license](#)

[Bricsys Knowledge Base](#)

[RLM License Administration Manual](#)

[RLM FAQ](#)

Advanced configurations

Antivirus

If a antivirus software is running on the server and blocking the License Server program (rlm.exe on Windows, rlm on Linux/Mac), the RLM service needs be unblocked in the antivirus.

See your antivirus configuration on how to unblock services.

Firewall

If a firewall is installed between the server and BricsCAD, two port numbers need to be opened in the firewall: the port number 5053 and the port number assigned to the Bricsys license server

This port number is dynamically assigned when the License Server starts. To open this port in the firewall, it must be first set in the Bricsys.lic file on the server.

Proceed as follows:

1. Open the License Server Administration web interface at <http://localhost:5054>.
2. Click the Status button on the left. The page Status for "rlm" on [LicenseServer] (port 5053) opens.
3. In the ISV Servers table, look at the bricsys row. The port number is displayed in the second column. Copy this port number.
4. Open the Bricsys.lic file in a text editor (Notepad, Gedit, ...). The default location of the file is C:\Program Files (x86)\Bricsys\Bricsys Network License Manager.

You can fix the port number by modifying the line ISV bricsys into:

ISV bricsys port=[port number]

where [port number] **must be replaced by port number copied from the** ISV Servers **table.**

The screenshot shows the Reprise License Server Administration web interface. The main content area displays the status for "rlm" on LicenseServer (port 5053). The interface includes a sidebar with navigation options like "Status", "Shutdown", and "Reread/Restart Servers". The main content area displays RLM software version (v10.1), RLM comm version (v1.2), and license files (C:\Program Files). Below this is an "ISV Servers" table with columns for Name, port, Running, Restarts, Server Status, License Usage, Debug Log, REREAD, OPTIONS, TRANSFER, and SHUTDOWN. The "bricsys" row is highlighted, showing port 61916. A Notepad window titled "Bricsys.lic - Notepad" is overlaid on the interface, showing the license file content with the line "ISV bricsys port=61916" highlighted in red. A red arrow points from the highlighted port number in the table to the highlighted line in the Notepad window.

Name	port	Running	Restarts	Server Status	License Usage	Debug Log	REREAD	OPTIONS	TRANSFER	SHUTDOWN
bricsys	61916	Yes	0	bricsys	bricsys	bricsys	bricsys	bricsys	bricsys	bricsys

```

HOST LICENSESERVER disksn=Z32TN4VTS 5053
ISV bricsys port=61916
LICENSE bricsys bricscad 14 permanent 2 platforms="x86_w x64_w"
contract=33 options="LA:en_US TY:FCO LE:PLA" _ck=69d798bf43 sig="60
Q04580DMEY4DEVHF2YSU8FCUKYBWKCCXVSPBU08AG164EBNVHB12CU0Y9QNC0PU77H
642875NV"
  
```

5. In the firewall, open both numbers 5053 and the port number you added in the Bricsys.lic file.
6. Shut down and restart the License Server program.

NOTE If this does not solve it, add the License Server program (rlm.exe on Windows, rlm on Linux/Mac) as an exception onto the firewall exceptions, then restart the License Server again.

Proxy

If a proxy server exists between BricsCAD and the License Server, proxy settings should be configured in BricsCAD.

See how to configure the proxy settings permanently for Network License use.

Related topics

[Configure the proxy settings](#)

[Network license server setup](#)

[Bricsys Knowledge Base](#) 

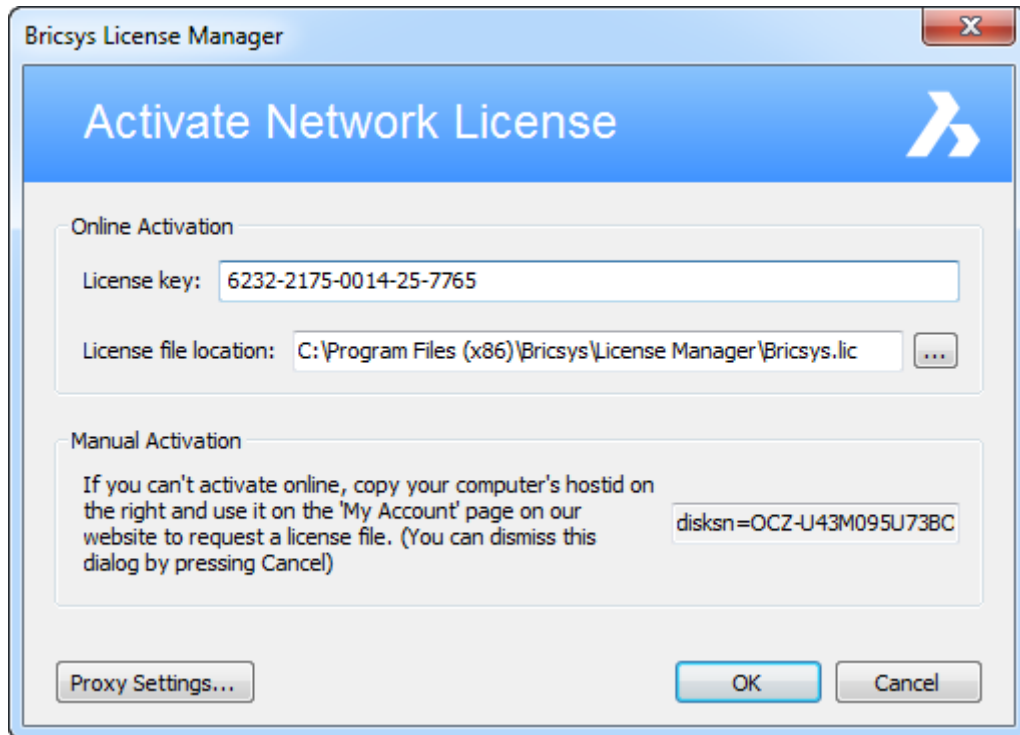
Network license manual activation

The BricsCAD license activation always requires an Internet connection.

However, if your computer is not connected to the Internet, the license can be activated manually via another computer (which is connected to the Internet).

To activate a Network license manually

1. In the Start menu, click the *License Activation* shortcut. The **Activate Network License** dialog box opens.



2. Copy the full content of the **Computer Hostid** field.
3. With the Internet connected computer, go to the [Bricsys website](#).
4. In the **Support** menu, choose **My Account** (login required). Make sure you have the Bricsys account of your company which contains the Volume license. Contact your Bricsys account manager if needed.

The *My Account* page opens.

5. In the left menu, choose *Licenses and support contracts*.

Personal details
Licenses and support contracts
Support requests
Invoices and payments
Messages
Mailing subscriptions
Promotion codes
My applications
Press room
Application Support

Your Bricsys licenses

[Activate trial manually...](#)

BricsCAD (Windows) V15 Platinum - All Languages	Manage...
License key: 3974-2155-0284-3462-4283	
BricsCAD (Windows) V14 Platinum - English	Manage...
License key: 6222-2155-3462-25-7765	
BricsCAD (Windows) V4 Standard - All Languages	
License key: F23C-6R72-92Y1-8AZU-H85T-NX5X	

Your third party licenses

Product	License key	Date
No licenses		

- Click the **Activate** button of the license you want to activate.
- In the Host ID field, paste the computer host ID of the computer you want to install BricsCAD on.

Activate manually

Please use the manual activation only if the computer where you want to activate the license has no Internet connection, or if activation in BricsCAD fails.

Host ID

disksn=Z42TR4ATS

To find your host ID in BricsCAD:

In the Activate BricsCAD dialog box, click the [Activate manually...](#) link.

The Manual Activation dialog box opens and displays your host ID.

Copy the full content of the Computer hostid field.

Activate

- In the **Host ID** field, paste the computer host ID of the computer you want to install BricsCAD on.
- Click the **Activate** button.
A license file is generated and made available for download.
- Click the **Download License File** button.
The license file **BricsCAD.lic** is downloaded to your default download folder.
- Copy the license file to the server, in the Bricsys Network License Manager installation folder (by default : C:\Program Files (x86)\Bricsys\Bricsys Network License Manager).

NOTE Manually activated licenses cannot be deactivated.

Single or Volume manual activation

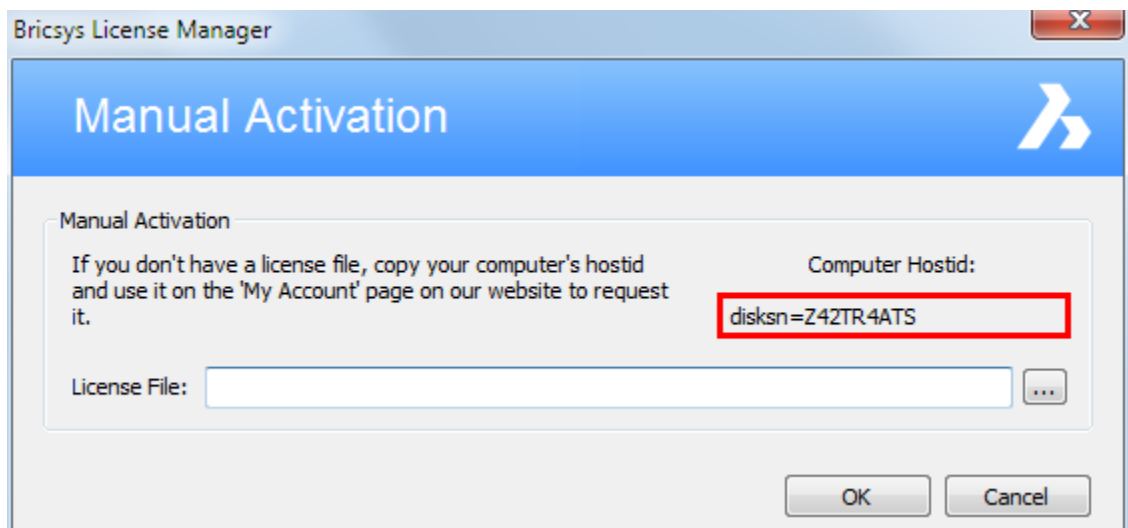
The BricsCAD license activation always requires an Internet connection.

However, if your computer is not connected to the Internet, the license can be activated manually via another computer (which is connected to the Internet).

To activate a Single or Volume license manually

- Do one of the following:
 - The first time BricsCAD is started - Go to next step.
 - When starting BricsCAD in trial mode - In the **Free Trial** dialog, click the **Enter License...** button.
 - When replacing or upgrading an existing license - In the **Help** menu, choose **BricsCAD License...** . The **Licensing Information** dialog box opens. Click the *Modify...* button.
- The **Activate BricsCAD** dialog box opens. Click the *Activate Manually...* link.











The **Manual Activation** dialog box opens.



- Copy the full content of the **Computer Hostid** field.
- With the Internet connected computer, go the [Bricsys website](#).
- In the **Support** menu, choose **My Account** (login required). Make sure you have the Bricsys account of your company which contains the Volume license. Contact your Bricsys account manager if needed.

The *My Account* page opens.

- In the left menu, choose *Licenses and support contracts*.

 Personal details
 Licenses and support contracts
 Support requests
 Invoices and payments
 Messages
 Mailing subscriptions
 Promotion codes
 My applications
 Press room
 Application Support

Your Bricsys licenses

[Activate trial manually...](#)

BricsCAD (Windows) V15 Platinum - All Languages	Manage...
License key: 3974-2155-0284-3462-4283	
BricsCAD (Windows) V14 Platinum - English	Manage...
License key: 6222-2155-3462-25-7765	
BricsCAD (Windows) V4 Standard - All Languages	
License key: F23C-6R72-92Y1-8AZU-H85T-NX5X	

Your third party licenses

Product	License key	Date
No licenses		

- Click the **Manage...** button of the license you want to activate.
- In the *Host ID* field, paste the computer host ID of the computer you want to install BricsCAD on.

Activate manually

Please use the manual activation only if the computer where you want to activate the license has no Internet connection, or if activation in BricsCAD fails.

Host ID

disksn=Z42TR4ATS


To find your host ID in BricsCAD:

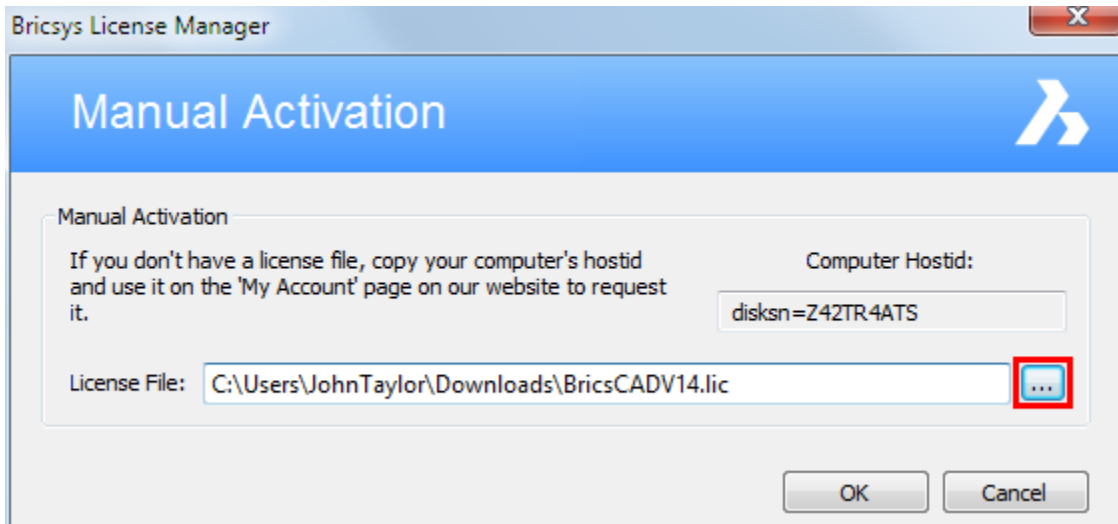
In the Activate BricsCAD dialog box, click the [Activate manually...](#) link.

The Manual Activation dialog box opens and displays your host ID.

Copy the full content of the Computer hostid field.

[Activate](#)

- Click the *Activate* button.
A license file is generated and made available for download.
- Click the *Download License File* button.
The license file *BricsCADV15.lic* is downloaded to your default download folder.
- Copy the license file to the computer you want to install BricsCAD on.
- In the *Manual Activation* dialog box, click the browse button ().
Open the folder where you copied the *BricsCADV15.lic* license file to and select the file.



13. Click the **OK** button. BricsCAD is launched.

NOTE Manually activated licenses cannot be deactivated.

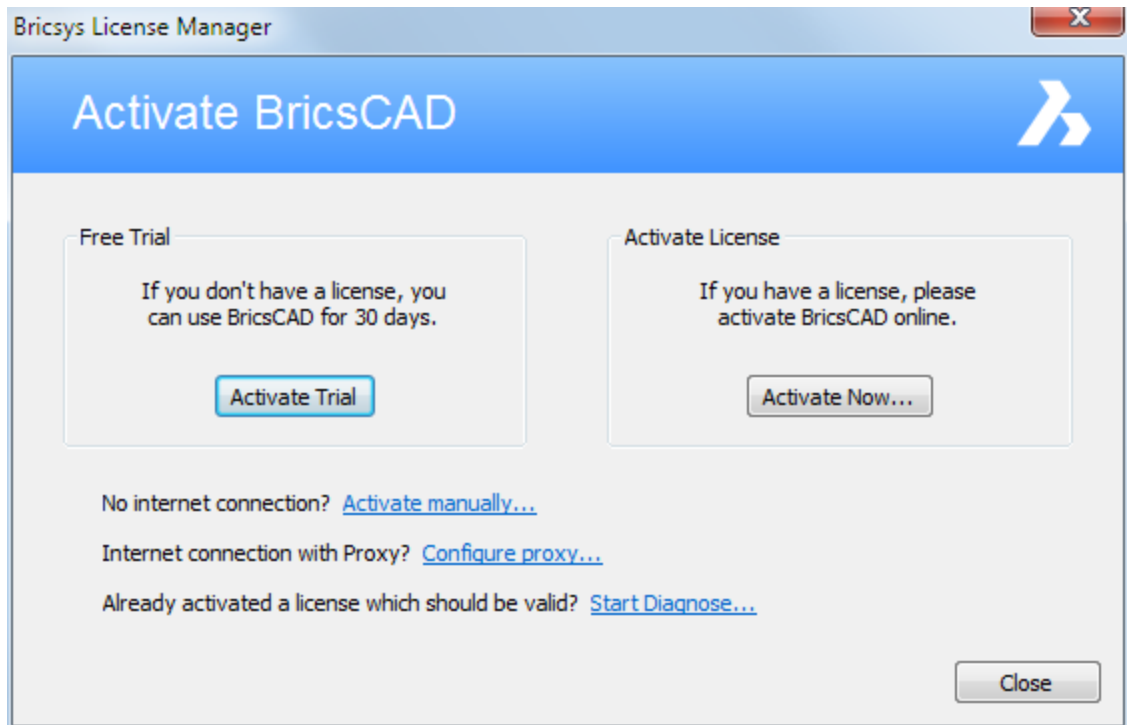
Trial manual activation

The BricsCAD activation always requires an Internet connection.

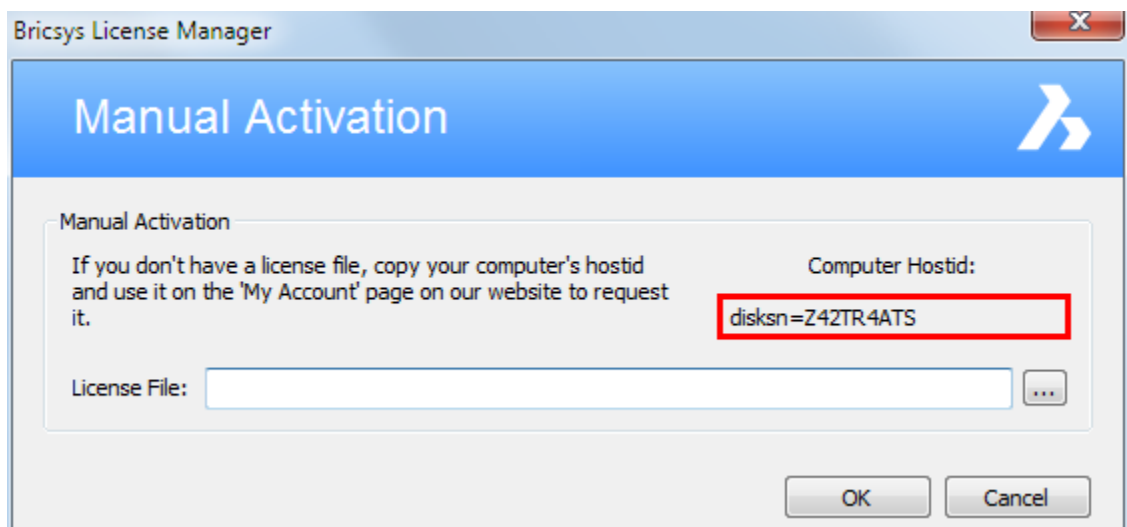
However, if your computer is not connected to the Internet, activation can be done manually via another computer (which is connected to the Internet).

To activate a trial manually

1. Launch BricsCAD.
2. In the **Activate BricsCAD** dialog box, click the **Activate Manually...** link.

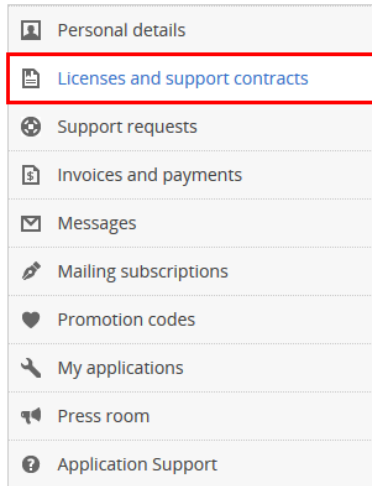


The **Manual Activation** dialog box opens.



3. Copy the full content of the **Computer Hostid** field.
4. With the Internet connected computer, go the [Bricsys website](#).

- In the **Support** menu, choose **My Account** (login required).
The **My Account** page opens.
- In the left menu, choose *Licenses and support contracts*.



Your Bricsys licenses

[Activate trial manually...](#)

BricsCAD (Windows) V14 Platinum - All Languages	Manage...
License key: 3974-2155-0284-3462-4283	
BricsCAD (Windows) V14 Platinum - English	Manage...
License key: 6222-2155-3462-25-7765	
BricsCAD (Windows) V4 Standard V5 - All Languages	View details...
License key: F23C-6R72-92Y1-8AZU-H85T-NX5X	

Your third party licenses

Product	License key	Date
No licenses		

- Click on *Activate trial license manually...*

Activate trial license manually

Only for V14 or higher

Please use the manual activation only if the computer where you want to activate the license has no Internet connection, or if activation in BricsCAD fails.

Activate trial for

Host ID


To find your host ID in BricsCAD:

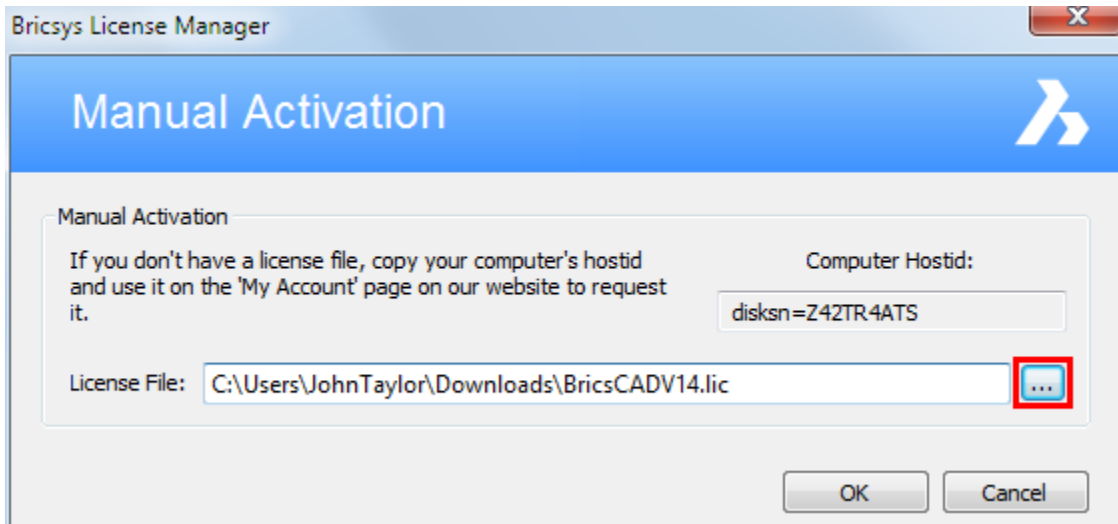
In the Activate BricsCAD dialog box, click the [Activate manually...](#) link.

The Manual Activation dialog box opens and displays your host ID.

Copy the full content of the Computer hostid field.

[Activate](#)

- In the *Host ID* field, paste the computer host ID of the computer you want to install BricsCAD on.
- Click the *Activate* button.
A license file is generated and made available for download.
- Click the *Download License File* button.
The license file *BricsCADV14.lic* is downloaded to your default download folder.
- Copy the license file to the computer you want to install BricsCAD on.
- In the *Manual Activation* dialog box, click the browse button ().
Open the folder where you copied the *BricsCADV14.lic* license file to and select the file.



13. Click the **OK** button.

14. In the **Free Trial** dialog box, click the *Continue* button. BricsCAD is launched.

Developer Reference

The *Developer Reference* is no longer included in this BricsCAD Help. The online version is available on the Bricsys website.

Open the [Developer Reference](#) .