



FEATURES & SPECIFICATIONS

INTENDED USE

For wall or ceiling mount – vertical or horizontal. Ideal for stairwells, corridors, lavatories or any utility application.

ATTRIBUTES

Easy maintenance design for individual or row mounting.

CONSTRUCTION

Heavy-duty code grade steel. Metal parts are die-formed.

FINISH

Five-stage iron-phosphate pretreatment ensures superior paint adhesion and rust resistance. Standard finish is high-gloss, baked white enamel (architectural black available).

OPTICAL SYSTEM

Available with high performance A12 pattern clear acrylic or low brightness matte white opal acrylic. Front metal fascia eliminates direct illumination.

ELECTRICAL SYSTEM

CSA listed. AWM, TFN or THHN wire used throughout, rated for required temperatures.

INSTALLATION

End caps spring-loaded for easy diffuser removal.

LISTING

Listed and labeled to comply with Canadian Standards.

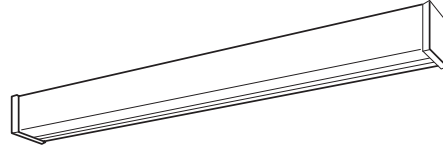
WARRANTY

Guaranteed for one year against mechanical defects in manufacture.

Catalog Number	
Notes	Type

All Purpose Wall Bracket

WC



2', 3' or 4' Lengths
1 or 2 Lamps

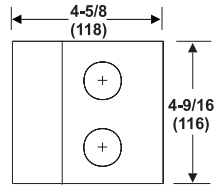
Specifications

Length: 24 (609), 36 (914) or 48 (1218)

Width: 4-5/8 (118)

Depth: 4-9/16 (116)

Weight: 14 lbs. (6.3 kg)



ORDERING INFORMATION

Example: **WC 2 32 120 GEB CSA**

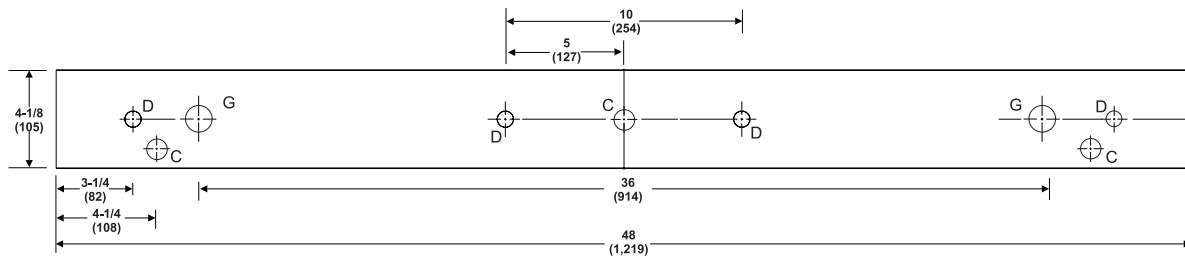
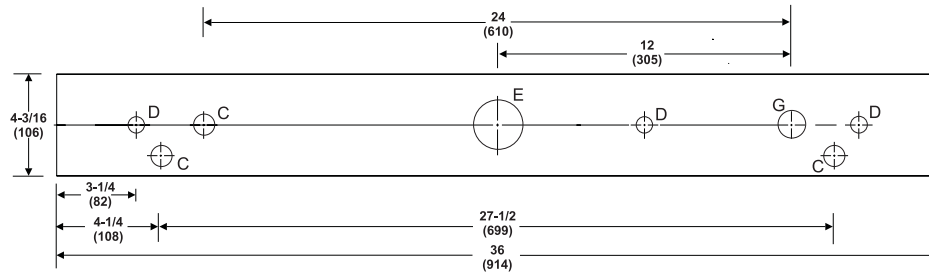
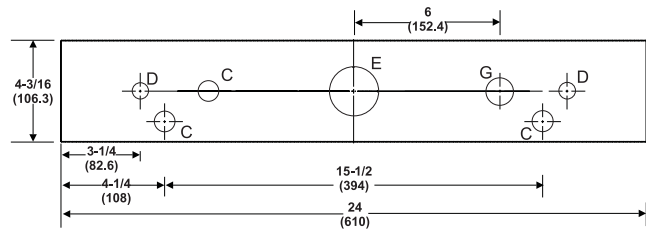
WC						
Series	Number of lamps	Lamp type	Diffuser type	Voltage	Options	
WC All Purpose Wall Bracket	1, 2 Not included.	17 17W T8 (24") 20 20W TS T12 (24") 25 25W T8 (36") 30 30W T12 (36") 32 32W T8 (48") 40 40W T12 (48")	(blank) Matte white opal acrylic A12 #12 pattern acrylic FAC Matte white opal acrylic with front metal fascia FA12 #12 pattern acrylic with front metal fascia	120, 347, MVOLT¹ Others available.	CO Grounded convenience outlet, 120V only (lower right) ² S1 Pull-chain switch; installed bottom left; <i>on/off</i> operation of all lamps only (120V only) ² GEB Electronic ballasts, ≤20% THD GEB10IS Electronic ballasts, ≤10% THD, Instant Start GEB10RS Electronic ballasts, ≤10% THD, Rapid Start ES Energy saving ballasts MB Architectural black finish CSA Listed and labeled to comply with Canadian Standards	

NOTES:

- 1 MVOLT (120/277) available with GEB10IS only.
- 2 For optional locations, consult factory.

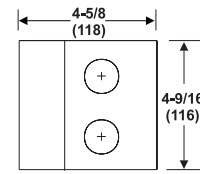
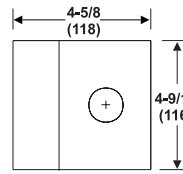
WC Wall Bracket, All Purpose

MOUNTING DATA



DIMENSIONS

Inches (millimeters). Subject to change without notice.



C = 7/8 (22) Dia. K.O.
 D = 11/16 (18) Dia. K.O.
 E = 2(51) Dia. K.O.
 G = 1-1/8 (29) Dia. K.O.

PHOTOMETRICS

Calculated using the zonal cavity method in accordance with IESNA LM41 procedure. Vertical and horizontal illuminance is calculated with fixture mounting 7' above floor. Reflectances 80/50/20%. Full photometric data available upon request.

WC 2 32 GEB CSA

Report LTL 5736

Initial point illuminance on wall and horizontal work surface (fc)

X and Y coordinates are on 12' centers.

	X	A	B	C	D	E	F	G	H	I	J	K	
Vert.	9	3	4	6	11	15	16	15	11	6	4	4	
	8	3	4	6	18	31	33	31	18	6	4	3	
	7	2	3	3						3	3	2	
	6	2	3	5	16	28	30	28	16	5	3	2	
	5	2	2	4	6	8	9	8	6	4	3	2	
	4	2	2	3	3	4	4	4	4	3	2	2	
	3	2	2	2	3	3	3	3	3	2	2	2	
	2	1	2	2	2	2	2	2	2	2	2	1	
	1	1	2	2	2	2	2	2	2	2	2	1	
	Horiz.	1	6	7	8	9	10	10	10	9	8	6	5
		2	6	7	8	10	11	11	11	10	9	7	6
		3	6	7	8	10	11	11	11	10	9	7	7
		4	7	7	8	10	11	11	11	10	9	8	7
5		6	7	8	9	10	10	10	9	9	7	7	
6		6	7	7	9	9	9	9	9	8	7	6	
7		5	6	6	7	7	7	7	7	7	6	5	
8		5	5	6	6	6	6	6	6	6	5	5	
9		5	5	5	6	6	6	6	6	6	5	5	
10		4	4	4	4	5	5	5	4	4	4	4	
11		3	3	4	4	4	4	4	4	4	3	3	
12		3	3	3	4	4	4	4	4	4	3	3	
13		2	2	3	3	3	3	3	3	3	2	2	

