



FEATURES & SPECIFICATIONS

INTENDED USE

Illuminating the interior of tractor trailers during initial inspection, loading, or unloading.

FEATURES

Folding single-strut construction with adjustable knuckle joint provides maximum flexibility. Reinforcement brackets support the arm to allow for long service and no sagging or bending over time. High-impact polycarbonate lamp heads and heavy-gauge metal lamp heads are made to last and mount quickly.

CONSTRUCTION

Arms and struts are constructed of heavy-duty 1-½" cross-section, 14-gauge steel tubing. A knuckle joint allows for maximum adjustment and positioning. All hardware is corrosion resistant. Nuts are locking and exposed threads are plastic capped. Arm and strut ends are provided with injection-molded end caps. Hinged ends are reinforced internally with aluminum inserts. Electrical cord lengths are designed for easy adjustment and secured via grommets.

FINISH

Standard finish on the arm, struts and metal lamp head is safety-yellow polyester powder paint. Polycarbonate lamp heads are safety yellow.

OPTICAL SYSTEM

A polycarbonate lamp head is standard. All units are provided with a UL listed porcelain, medium-base socket with copper alloy screw shell and center contact.

ELECTRICAL SYSTEM

All units are 120V only. Reactor type ballasts are supplied for High Pressure Sodium lamps.

INSTALLATION

The arm and strut-mounting bracket is included. Arm assembly is attached via the bracket with one bolt. Lamp head attachment is made via a single bolt and electrified via a NEMA plug and receptacle assembly. The heavy-duty wall bracket is recommended for all fan/light combinations.

LISTING

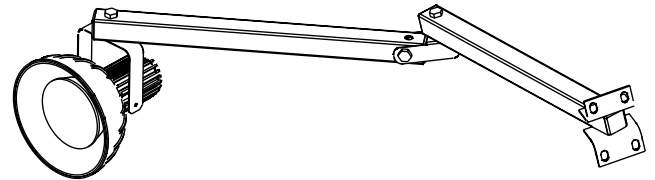
UL Listed to US and Canadian safety standards.

| | |
|----------------|------|
| Catalog Number | |
| Notes | Type |

Dock Lights

FSSA ADJ

Single-Strut Arm
Folding, Adjustable



ORDERING INFORMATION

Choose the boldface catalog nomenclature that best suits your needs and write it on the appropriate line. Order accessories as separate catalog number.

Example: **FSSA40 ADJ 150I**

| | | ADJ | | | |
|--|---------------------------|-------------------------|--|--|--|
| Series | Arm | Wattage | Options | | |
| FSSA40 Folding Single-Strut Arm, 40" length | ADJ Adjustable arm | 150I | SED Special environment diffuser ³ | | |
| FSSA60 Folding Single-Strut Arm, 60" length | | 300I¹ | LPI Lamp included ⁴ | | |
| | | 50S² | | | |

NOTES:

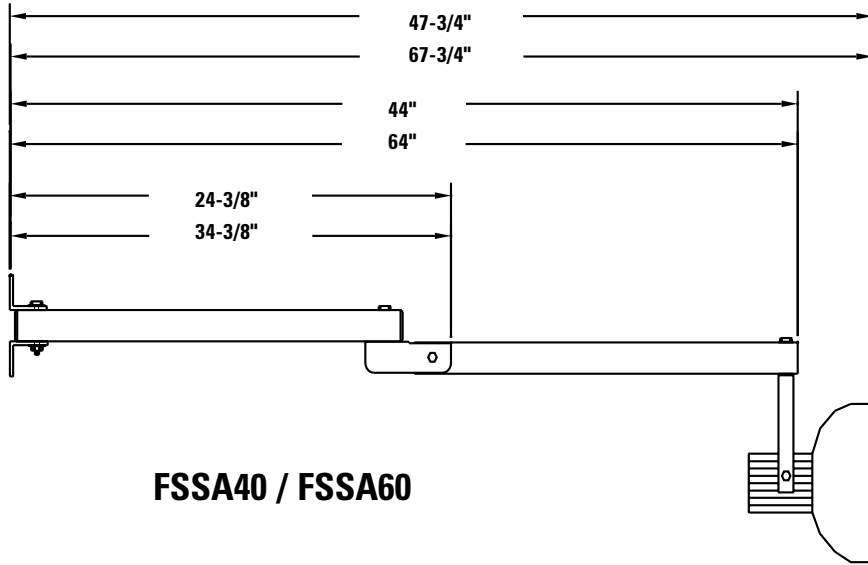
- 1 Metal lamp head provided
- 2 Vacuum metalized polycarbonate lamp head
- 3 Available only for 50S
- 4 Standard in H.I.D. units, not available for incandescent

Accessories

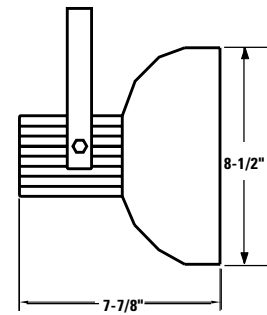
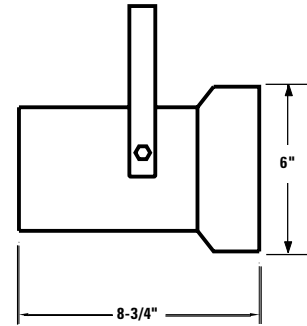
Order as separate catalog numbers.

- HDWB** Heavy-duty wall bracket
- PLHWG8** Polycarbonate lamp head wireguard
- MLHWG6** Metal lamp head wireguard

FSSA ADJ Dock Lighting



FSSA40 / FSSA60



| Lithonia Nomenclature | Lbs | Kg | Lithonia Nomenclature | Lbs | Kg |
|-----------------------|-----|------|-----------------------|-----|------|
| FSSA40 ADJ 150I | 12 | 26.4 | FSSA40 ADJ 300I | 13 | 28.6 |
| FSSA60 ADJ 150I | 15 | 33 | FSSA60 ADJ 300I | 16 | 35.2 |
| FSSA40 ADJ 50S LPI | 14 | 30.8 | | | |
| FSSA60 ADJ 50S LPI | 17 | 37.4 | | | |