



Standard Guide for Conducting Borehole Geophysical Logging - Gamma¹

This standard is issued under the fixed designation D 6274; the number immediately following the designation indicates the year of original adoption or, in the case of revision, the year of last revision. A number in parentheses indicates the year of last reapproval. A superscript epsilon (ϵ) indicates an editorial change since the last revision or reapproval.

1. Scope

1.1 This guide covers the general procedures necessary to conduct gamma, natural gamma, total count gamma, or gamma ray (hereafter referred to as gamma) logging of boreholes, wells, access tubes, caissons, or shafts (hereafter referred to as boreholes) as commonly applied to geologic, engineering, ground-water and environmental (hereafter referred to as geotechnical) investigations. Spectral gamma and logging where gamma measurements are made in conjunction with a nuclear source are excluded (for example, neutron activation and gamma-gamma density logs). Gamma logging for minerals or petroleum applications are excluded.

1.2 This guide defines a gamma log as a record of gamma activity of the formation adjacent to a borehole with depth (See Fig. 1).

1.2.1 Gamma logs are commonly used to: delineate lithology, correlate measurements made on different logging runs, and define stratigraphic correlation between boreholes (See Fig. 2).

1.3 This guide is restricted to gamma logging with nuclear counters consisting of scintillation detectors (crystals coupled with photomultiplier tubes), which are the most common gamma measurement devices used in geotechnical applications.

1.4 This guide provides an overview of gamma logging including: general procedures; specific documentation; calibration and standardization, and log quality and interpretation.

1.5 To obtain additional information on gamma logs see Section 13.

1.6 This guide is to be used in conjunction with Guide D 5753.

1.7 Gamma logs should be collected by an operator that is trained in geophysical logging procedures. Gamma logs should be interpreted by a professional experienced in log analysis.

1.8 The geotechnical industry uses English or SI units. The gamma log is typically recorded in units of counts per second (cps) or American Petroleum Institute (API) units.

1.9 *This guide does not purport to address all of the safety and liability problems (for example, lost or lodged probes and equipment decontamination) associated with its use.*

1.10 *This standard does not purport to address all of the*

safety concerns, if any, associated with its use. It is the responsibility of the user of this standard to establish appropriate safety and health practices and determine the applicability of regulatory limitations prior to use.

1.11 *This guide offers an organized collection of information or a series of options and does not recommend a specific course of action. This document cannot replace education or experience and should be used in conjunction with professional judgment. Not all aspects of this guide may be applicable in all circumstances. This ASTM standard is not intended to represent or replace the standard of care by which the adequacy of a given professional service must be judged, nor should this document be applied without consideration of a project's many unique aspects. The word "Standard" in the title of this document means only that the document has been approved through the ASTM consensus process.*

2. Referenced Documents

2.1 ASTM Standards:

D 653 Terminology Relating to Soil, Rock and Contained Fluids²

D 5088 Practice for Decontamination of Field Equipment at Non-Radioactive Waste Sites³

D 5608 Practice for Decontamination of Field Equipment Used at Low Level Radioactive Waste Sites³

D 5753 Guide for Planning and Conducting Borehole Geophysical Logging³

D 6167 Guide for Conducting Borehole Geophysical Logging - Mechanical Caliper³

3. Terminology

3.1 Definitions:

3.1.1 Definitions shall be in accordance with Terms and Symbols D 653 Section 13 Ref (1), or as defined below.

3.2 Definitions of Terms Specific to This Standard:

3.2.1 *accuracy, n*—how close measured log values approach true value. It is determined in a controlled environment. A controlled environment represents a homogeneous sample volume with known properties.

3.2.2 *dead time, n*—the time after each pulse when a second pulse cannot be detected.

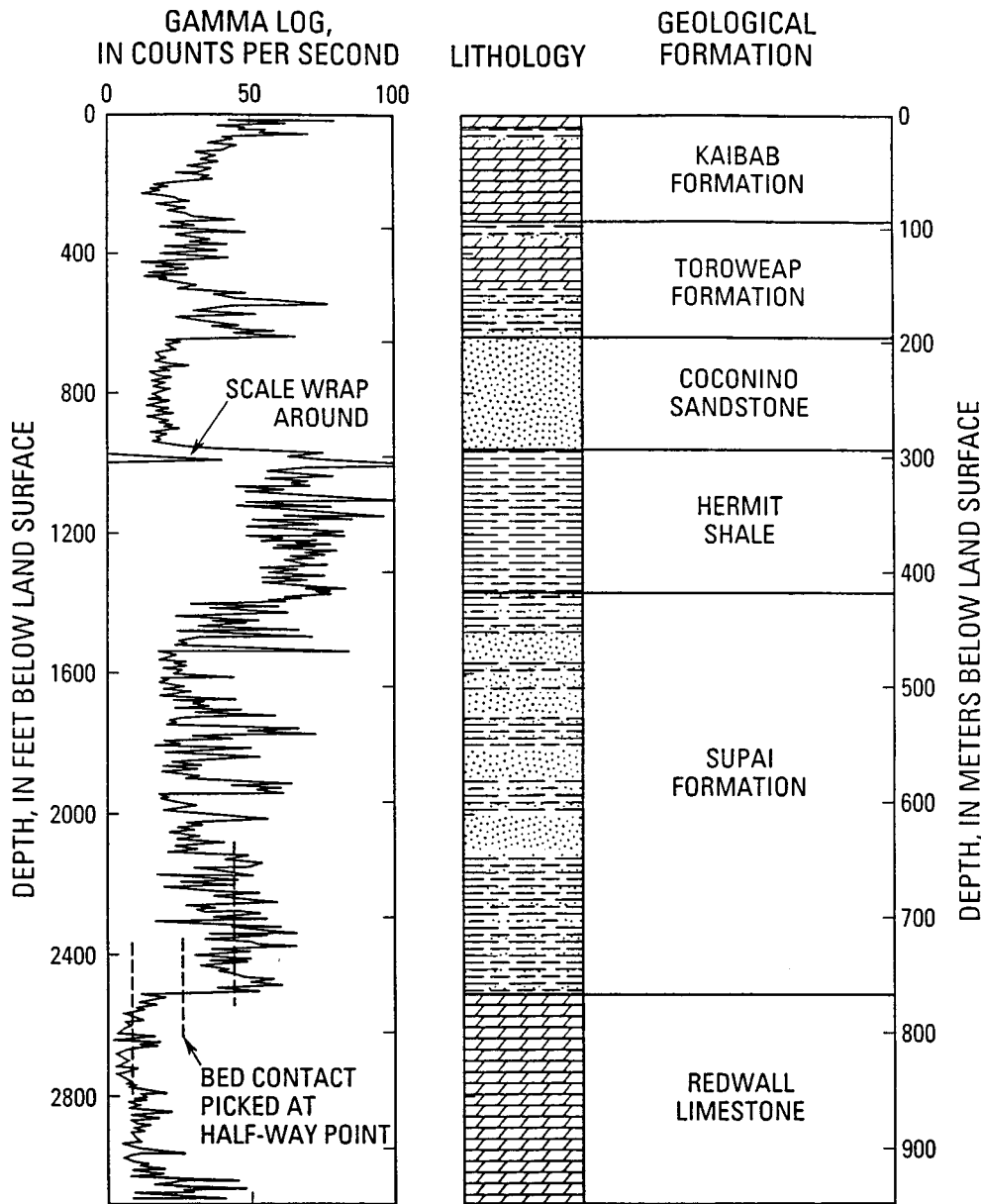
3.2.3 *dead time effect, n*—the inability to distinguish

¹ This guide is under the jurisdiction of ASTM Committee D-18 on and is the direct responsibility of Subcommittee D8.01 on Site Characterization for Environmental Purposes.

Current edition approved May 10, 1998. Published January 1999.

² Annual Book of ASTM Standards, Vol 04.08.

³ Annual Book of ASTM Standards, Vol 04.09.



NOTE 1—This figure demonstrates, how the log can be used to identify specific formations, illustrating scale wrap-around for a local gamma peak, and showing how the contact between two formations is picked to coincide with the half-way point of the transition between the gamma activities of the two formations.

FIG. 1 Example of a Gamma Log From Near the South Rim of the Grand Canyon

closely-spaced nuclear counts leads to a significant underestimation of gamma activity in high radiation environments and is known as the “dead time effect”.

3.2.4 *depth of investigation, n*—the radial distance from the measurement point to a point where the predominant measured response may be considered centered, which is not to be confused with borehole depth (for example, distance) measured from the surface.

3.2.5 *measurement resolution, n*—the minimum change in measured value that can be detected.

3.2.6 *repeatability, n*—the difference in magnitude of two measurements with the same equipment and in the same environment.

3.2.7 *vertical resolution, n*—the minimum thickness that

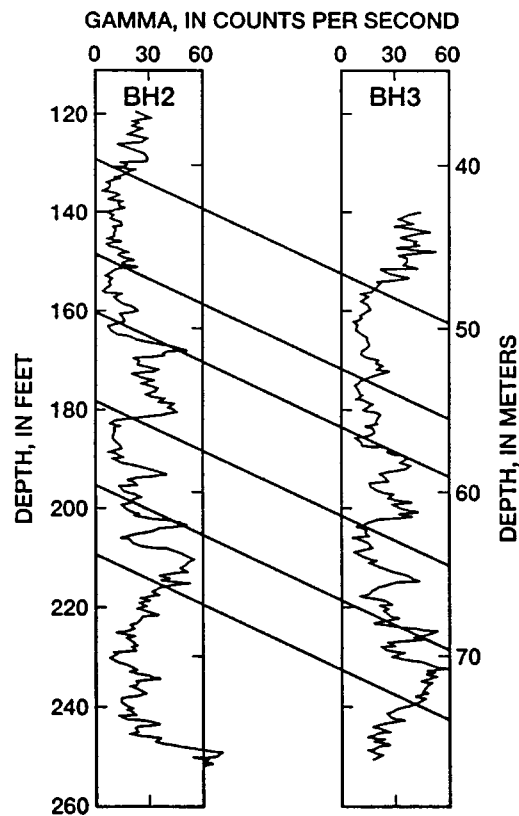
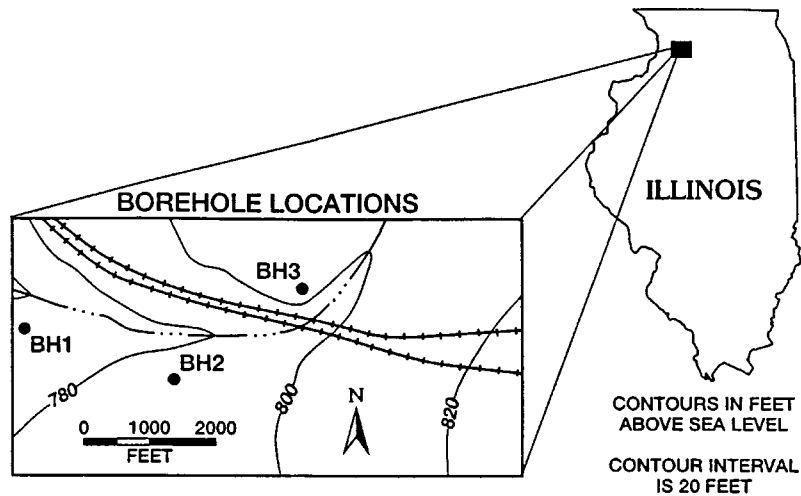
can be separated into distinct units.

3.2.8 *volume of investigation, n*—the volume that contributes 90 percent of the measured response. It is determined by a combination of theoretical and empirical modeling. The volume of investigation is non-spherical and has gradational boundaries.

4. Summary of Guide

4.1 This guide applies to borehole gamma logging and is to be used in conjunction with Guide D 5753.

4.2 This guide briefly describes the significance and use, apparatus, calibration and standardization, procedures, and reports for conducting borehole gamma logging.



NOTE 1—From a study site showing how the gamma logs can be used to identify where beds intersect each of the individual boreholes, demonstrating lateral continuity of the subsurface geology.

FIG. 2 Example of Gamma Logs From Two Boreholes

5. Significance and Use

5.1 An appropriately developed, documented, and executed guide is essential for the proper collection and application of gamma logs. This guide is to be used in conjunction with Guide D 5753.

5.2 The benefits of its use include improving selection of gamma logging methods and equipment; gamma log quality and reliability; usefulness of the gamma log data for subsequent display and interpretation.

5.3 This guide applies to commonly used gamma logging

methods for geotechnical applications.

5.4 It is essential that personnel (see 8.3.2 of Guide D 5753) consult up-to-date textbooks and reports on the gamma technique, application, and interpretation methods.

6. Interferences

6.1 Most extraneous effects on gamma logs are caused by logging too fast, instrument problems, borehole conditions, and geologic conditions.

6.2 Logging too fast can significantly degrade the quality of

gamma logs. Gamma counts originating at a given depth need to be averaged over a time interval such that the natural statistical variation in the rate of gamma photon emission is negligible (see Fig. 3).

6.3 Instrument problems include electrical leakage of cable and grounding problems; degradation of detector efficiency attributed to loss of crystal transparency (fogging) or fractures or breaks in the crystal; and mechanical damage causing separation of crystal and photomultiplier tube.

6.4 Borehole conditions include changes in borehole diameter (especially in the fluid-filled portion); casing type and number; radioactive elements in drilling fluid in the borehole, or in cement or slurry behind casing; and steel casing or cement in the annulus around casing, and thickness of the annulus.

6.5 Geologic conditions include high levels of radiation which can degrade the efficiency of gamma counting through the dead time effect, energy level of emitted gammas, formation density, and lithologic bed geometry.

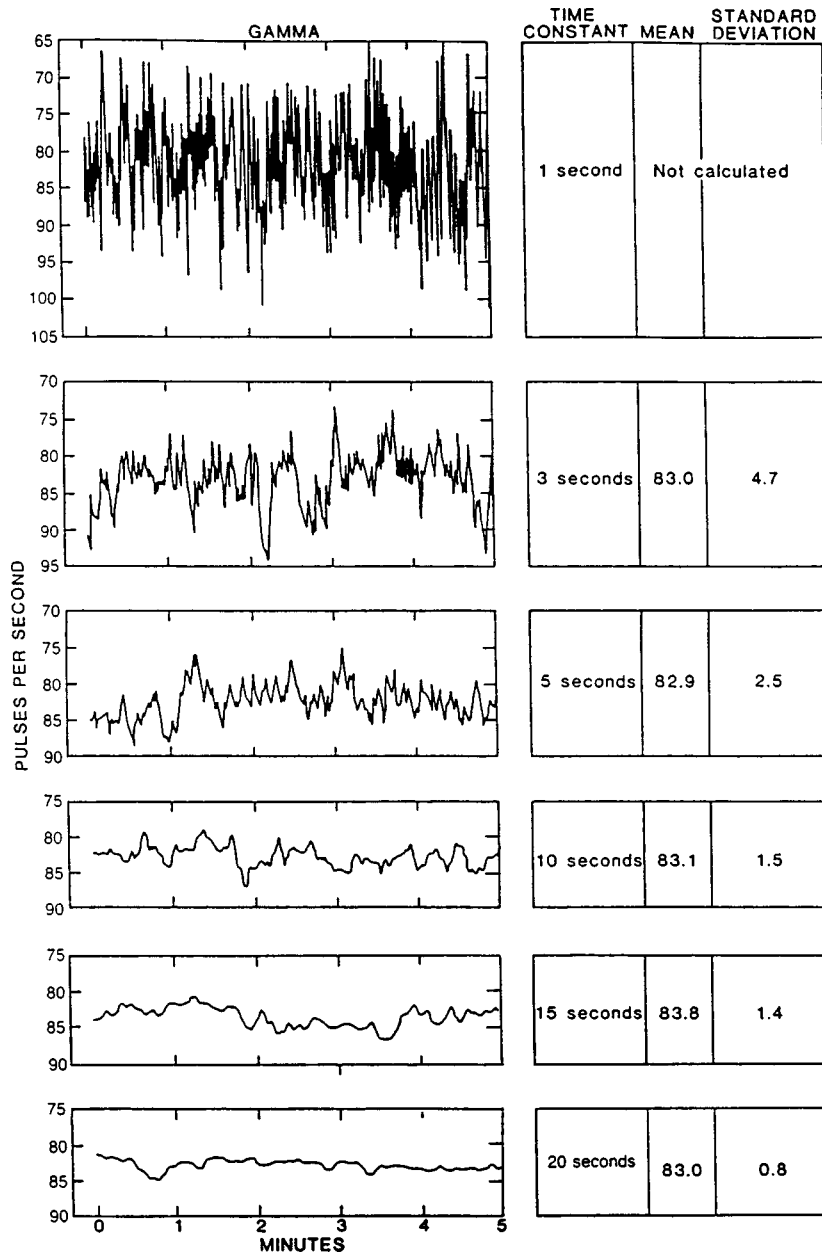
7. Apparatus

7.1 A geophysical logging system has been described in the general guide (Section 6 of Guide D 5753).

7.2 Gamma logs are collected with probes using scintillation detectors.

7.2.1 The most common gamma detectors are sodium iodide (NaI).

7.2.2 Other gamma detectors include cesium iodide (CsI) and bismuth germanate (BGO).



NOTE 1—The fluctuations in gamma activity in counts per second is shown to vary by progressively smaller amounts as the averaging period (time constant) is increased from 1 to 20 s.

FIG. 3 Example of Natural Statistical Fluctuation of Gamma Counts From a Test Source of Given Strength

7.3 Gamma probes generate nuclear counts as pulses of voltage that are amplified and clipped to a uniform amplitude.

7.3.1 Gamma probes used for geotechnical applications typically can be logged inside of a 2 in. (5 cm) diameter monitoring well.

7.4 The volume of investigation and depth of investigation are determined by the density of the material near the probe, which controls the average distance a gamma photon can travel before being absorbed.

7.4.1 The volume of investigation for gamma logs is generally considered spherical with a radius of 0.5 to 1.0 ft (15 to 30 cm) from the center of the detector in typical geological formations. The volume becomes elongated when detector length exceeds approximately 0.5 ft (15 cm).

7.4.2 The depth of investigation for gamma logs is generally considered to be 0.5 to 1.0 ft (15 to 30 cm).

7.5 Vertical resolution of gamma logs is determined by the size of the volume from which gammas can reach a nuclear detector suspended in the borehole. In typical geological formations surrounding a fluid-filled borehole, this is a roughly spherical volume about 1 to 2 ft (30 to 60 cm) in diameter. Excessive logging speed can decrease vertical resolution.

7.6 Measurement resolution of gamma probes is determined by the counting efficiency of the nuclear detector being used in the probe. Typical measurement resolution is 1 cps.

7.7 A variety of gamma logging equipment is available for geotechnical investigations. It is not practical to list all of the sources of potentially acceptable equipment.

8. Calibration and Standardization of Gamma Logs

8.1 General:

8.1.1 National Institute of Standards and Technology (NIST) calibration and standardization procedures do not exist for gamma logging.

8.1.2 Gamma logs can be used in a qualitative (for example, comparative) or quantitative (for example, estimating radioisotope concentration) manner depending upon the project objectives.

8.1.3 Gamma calibration and standardization methods and frequency shall be sufficient to meet project objectives.

8.1.3.1 Calibration and standardization should be performed each time a gamma probe is suspected to be damaged, modified, repaired, and at periodic intervals.

8.2 Calibration is the process of establishing values for gamma response associated with specific levels of radioisotope concentration in the sampled volume and is accomplished with a representative physical model. Calibration data values related to the physical properties (for example, radioisotope concentration) may be recorded in units (for example, cps), that can be converted to units of radioactive element concentration (for example, ppm Radium-226 or percent Uranium-238 equivalents).

8.2.1 Calibration is performed by recording gamma log response in cps in boreholes centered within volumes containing known homogenous concentrations of radioactivity elements.

8.2.2 Calibration volumes should be designed to contain material as close as possible to that in the environment where the logs are to be obtained to allow for effects such as gamma

energy level, formation density, and activity of daughter isotopes on the calibration process.

8.3 Standardization is the process of checking logging response to show evidence of repeatability and consistency, and to insure that logging probes with different detector efficiencies measure the same amount of gamma activity in the same formation. The response in cps of every gamma detector is different for the same radioactive environment.

8.3.1 Calibration ensures standardization.

8.3.2 The American Petroleum Institute maintains a borehole in Houston, Texas, where two formations have been fabricated to provide homogeneous levels of gamma activity so that probes can be standardized on the basis of the response in these boreholes. 1 API gamma unit is 1/200th of the full scale response in the representative shale model in this borehole (see Guide D 5753).

8.3.3 For geotechnical applications, gamma logs should be presented in API units for standardization.

8.3.4 A representative borehole may be used to periodically check gamma probe response providing the borehole and surrounding environment does not change with time or their effects on gamma response can be documented.

8.3.5 A small radioactive source(s) (thorium-treated lantern mantles, small bottles of potassium chloride, laboratory radioactive test sources, or sleeves containing natural radioisotopes (phosphate sands, etc.) placed over the gamma detector can be used to check calibration if the sources have been related to a calibration facility.

8.4 Gamma log output needs to be corrected for dead time when logging in formations with unusually large count rates, such as uranium rich pegmatites or phosphatic sands, and areas contaminated with radioactive waste.

8.4.1 Dead time corrections are usually negligible under typical logging conditions when measured gamma counts are less than a few hundred counts per second.

8.4.2 Dead time corrections are estimated by comparing the gamma log response under the influence of two similar radioactive sources. The measured count rate would approximately double over that with one source when both sources are placed in the sample volume of the logging tool. The dead time causes the count rates to be slightly less than double. Dead time is given by the formula:

$$\begin{aligned} \text{Dead Time} &= t_0 \\ &= 2(N_1 + N_2 - N_{12}) / (N_{12}(N_1 + N_2)) \end{aligned} \quad (1)$$

$$\text{Corrected count rate} = N^* = N / (1 - N t_0)$$

where: N_1 and N_2 are the count rates measured using each of the two similar sources and N_{12} is the count rate obtained using both of the similar sources in counts per second, t_0 is the dead time correction in seconds, N is the measured count rate in a formation in counts per second, and N^* is the count rate after correction for the dead time effect. t_0 is usually found to be a few microseconds for most gamma logging equipment.

9. Procedure

9.1 See Section 8 of Guide D 5753 for planning a logging program, data formats, personnel qualifications, field documentation, and header documentation.

9.1.1 Document gamma specific information (for example, crystal size, type, and location).

9.2 Identify gamma logging objectives, Select appropriate equipment to meet objectives.

9.3 Gamma logs are commonly run with other logging measurements in combination probes for correlation purposes. This is most often done by equipping other classes of logging probes (electric, indication, neutron porosity, etc.) with gamma detectors (see Fig. 4).

9.3.1 Detector location on the probe needs to be appropriate to meet the project objectives. Long combination probe strings with the gamma detector located at a significant distance from the bottom of the probe may be inappropriate. Gamma detection position on the logging probe is especially important in shallow boreholes where over drilling the borehole is not possible.

9.3.2 Gamma probes are usually run free-hanging where the probe lies against one side of the borehole that is, as a mandrel. However, gamma detectors are sometimes included with combination probes that are run centralized or decentralized in the borehole. Gamma response may be somewhat different depending upon the method used (for example, free-hanging or centralized) in a given geologic environment.

9.3.3 Gamma equipment decontamination is addressed according to project specifications (see Practice D 5088 for non-radioactive waste sites and Practice D 5608 for low level radioactive waste sites).

9.4 Select when the gamma probe is to be run in the logging sequence (see 8.2.2.1 of Guide D 5753).

9.4.1 Gamma probes are run after or in combination with any television camera and fluid property probes to insure that there is minimum disturbance to the borehole fluid which can degrade those logs.

9.4.2 Gamma probes are run before any probe utilizing nuclear sources and more expensive centralized probes to ensure borehole stability possible.

9.4.3 Whenever possible, gamma probes should be run open hole or through the least amount of completion material to minimize well construction affects and to provide a base line for comparing subsequent logs.

9.5 Gamma probe operation is typically checked before the start of each run to insure that equipment is operating and that nuclear counters are producing output.

9.5.1 Gamma operation may be checked by placing a small radioactive source over the gamma detector. Common materials such as Thorium-treated lantern mantles, small bottles of potassium chloride, laboratory radioactive test sources, or sleeves containing natural radioisotopes (phosphatic sands, etc.) are frequently used.

9.6 Select and document the depth reference point.

9.6.1 The selected depth reference needs to be stable and accessible (for example, top of borehole casing).

9.7 Determine and document probe zero reference point (for example, top of probe or cablehead) and depth offset to gamma measurement point.

9.7.1 The measurement point of the gamma logging probe is the distance along the probe corresponding with the center of the crystal within the logging tool; this position is not visible

unless the position is marked on the outside of the tool or the operator has information specifying that position with respect to a prominent reference point on the probe housing.

9.7.2 Position the probe zero reference point to the depth reference point (ground level, top of casing, etc.) and initialize depth recording/display systems.

9.8 Select horizontal and vertical scales for log display to meet project objectives.

9.8.1 Preferred horizontal scale divisions are multiples of two or five inch that the log value is easily determined on the plot (for example, 0 to 100, 0 to 200, 50 to 150, etc.).

9.8.2 Preferred vertical scales are multiples of two or five such that depth can be easily determined on a log plot (for example, 1/5, 1/10...1/100, etc.).

9.9 Select digitizing interval (or sample rate if applicable) to meet project objectives (see 8.3.1.2 of Guide D 5753).

9.9.1 Digitizing interval needs to be at least as small as the vertical resolution of the gamma probe, that is typically about 1 ft (30 cm).

9.9.2 Typically, this interval is no larger than 0.5 ft (15 cm) to insure that the optimum vertical resolution is achieved.

9.9.3 Even though field plots may be generated with smoothing, the rawest (non-filtered) form of the data should be recorded.

9.10 The gamma probe is lowered to the bottom of the borehole.

9.10.1 Gamma counts should be monitored as the probe is lowered because knowledge of the average count rates produced by the formation is important in determining proper logging speed. Gamma value range is also needed to determine proper horizontal scale and with some instrumentation, to determine sensitivity/gain settings.

9.10.2 Selection of probe speed while lowering is based on knowledge of borehole depth, stability and other conditions; tension on the measuring wheel and smoothness of probe descent should be monitored to ensure that depth errors are not being introduced.

9.11 Select logging speed.

9.11.1 Logging speed should be determined by the application of the data acquired to meet project objectives.

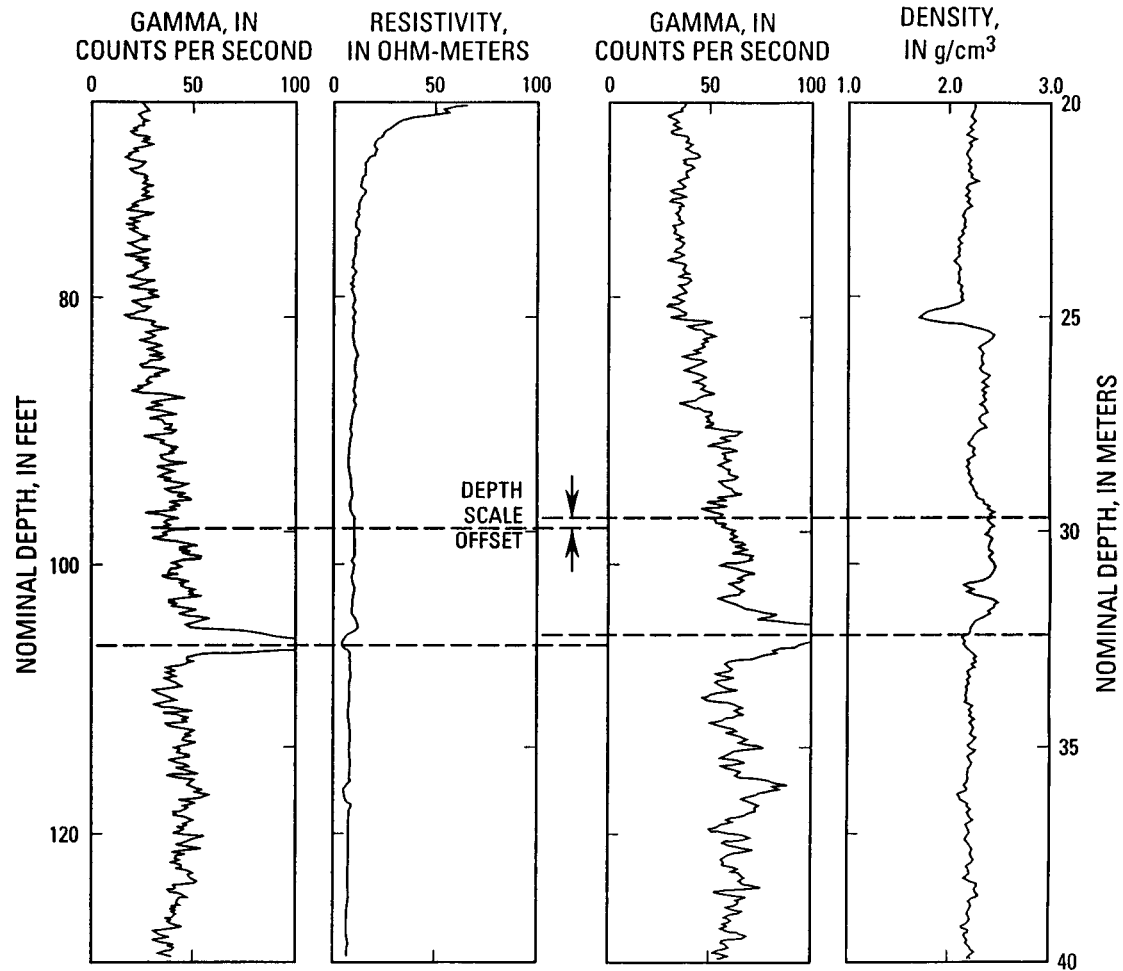
9.11.2 Typical gamma logging speed is approximately 20 ft per minute (6 m per minute), but slower speeds may be needed if formation gamma activity is low.

9.11.3 Proper logging speed is indicated by gamma logs that show distinct beds, which correlate with other information such as core descriptions or driller's logs, and where there is relatively little random fluctuation within beds (see Fig. 1).

9.11.4 If the operator is concerned about whether logging speed is affecting the quality of the gamma log, the operator should repeat a representative section of the log (representative of the geologic variation in the borehole) using the same speed; if the log reproduces interpreted bed boundaries that agree with other log and geologic data and the initial run, then the logging speed is adequate. If there are significant changes in the interpreted bed boundaries or if bed boundaries (lithologic contacts) are not indicated, the operator should try logging at a reduced speed.

9.11.5 In situations where gamma activity is extremely low,

RESISTIVITY COMBINATION PROBE DENSITY COMBINATION PROBE



NOTE 1—This figure shows a small depth offset that should be removed by adjusting the depth scale on one of the logs; note that the average count rates for the two different gamma detectors differ as a result of different detector efficiencies.

FIG. 4 Example of Gamma Logs From Gamma Detectors in Two Different Logging Tools (Electrical Resistivity on Density)

such as in many basalts and some carbonate and quartzite formations, the operator can estimate the maximum logging speed from the formula:

$$S_f < 0.50G \quad \text{or} \quad S_m < 0.15G \quad (2)$$

where: S_f is the logging speed in feet per minute, S_m is logging speed in metres per minute, and G is the average measured gamma activity of the interval or intervals of interest in cps. This formula gives the logging speed required to insure that the standard nuclear statistical error is less than about 5 %. In some situations, the available time and budget, and the length of borehole to be logged may indicate that a trade-off be made between statistical errors and log resolution; an effective trade-off for a given situation can be made by experimenting with repeat logging runs over representative intervals containing bed contacts (see Fig. 5).

9.12 Collect gamma log data while the probe is moving up the borehole; data collection while logging upward insures that the probe is retrieved smoothly and continuously.

9.12.1 In unstable boreholes, it is sometimes advantageous to collect data both while probe is being lowered and being pulled up the borehole.

9.13 When the probe reaches the top of the borehole:

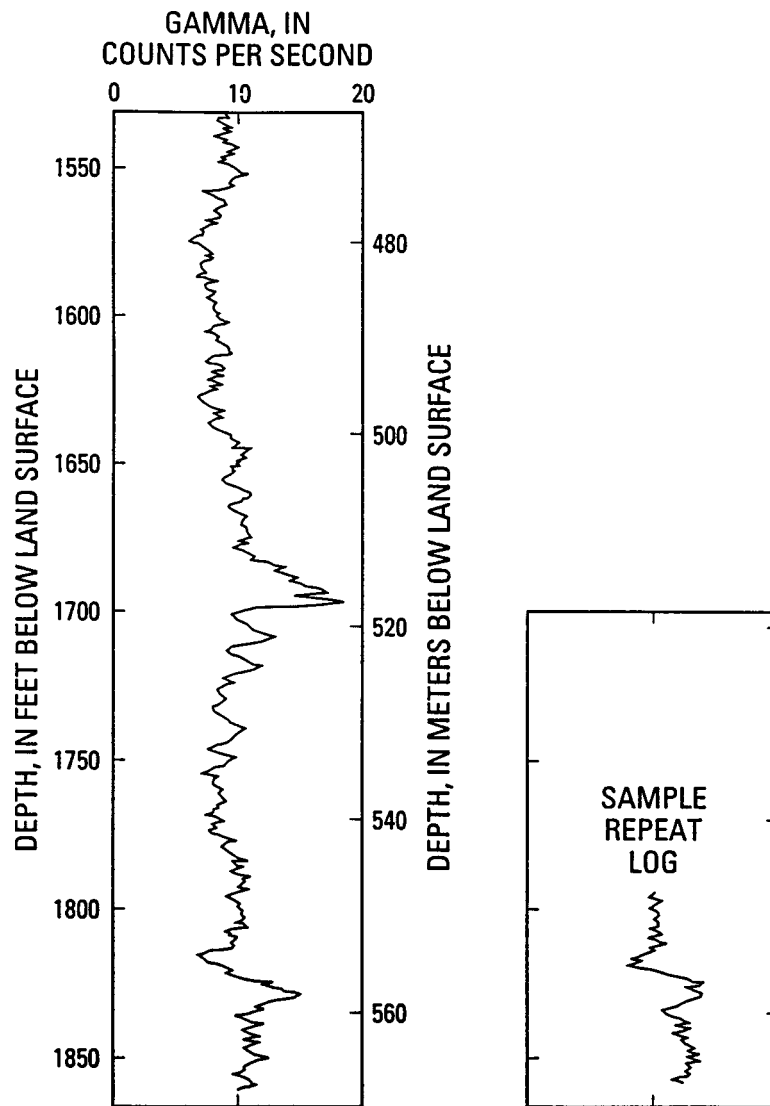
9.13.1 Check depth reference and document after survey depth error (ASDE).

9.13.2 Determine if ASDE meets project objectives.

9.13.3 Typical tolerance for ASDE is ± 0.4 per 100 ft interval logged (± 0.4 m per 100 m).

9.13.4 Typical depth tolerance for repeat logs is within 0.4 %.

9.14 Selected borehole intervals should be repeated (that is, relogged) under similar logging parameters as the initial log. Repeat logs verify that the gamma electronics are functioning correctly, and that the logging speed (effect of nuclear statistical fluctuations) is adequate for project objectives. The interval repeated should have enough variability, if possible, to check repeatability and resolution; also note that nuclear



NOTE 1—In this figure, experimentation with logging speed demonstrates that a 10 ft (m) per minute logging speed generates useful and repeatable gamma logs with statistical errors somewhat greater than 5 %, but where beds can be effectively detected.

FIG. 5 Example of a Gamma Log From a Basalt Formation of Very Low Gamma Activity

statistical noise is most likely to affect intervals with relatively low gamma count rates.

9.14.1 Repeat logs should be compared with the original log to ensure correct operation of the probe prior to ending a logging event.

9.14.2 Repeat sections may not repeat exactly because of the statistical nature of nuclear activity that introduces some random fluctuation into the measured count rate. Individual log values should typically repeat within one standard deviation, and the character and shape of the logs should be similar. Note that the importance of high count rates to reduce the statistical variations between log runs.

9.14.3 Repeat sections may not repeat exactly due to a different orientation of the logging probe on the repeat run or changes in the borehole between logging runs (see Section 6, Interferences).

9.15 Evaluate the quality of field logs and compare logs with drilling and completion information.

9.16 Gamma logs are usually smoothed by filtering (in hardware or software) with an N -point averaging window (for example, running average, weighted average, etc.) to minimize the effects of statistical variation caused by radioactive decay. The window width:

$$(N-1)\Delta z \quad (3)$$

where: N is the number of points and Δz is the digitizing interval, should correspond with the vertical resolution, that is typically about 1 ft (30 cm) in most geological formations.

9.16.1 Larger filters are frequently applied to gamma logs for presentation purposes (compression of the vertical scale); however, this filtering generally results in loss of some log information.

9.16.2 The rawest form of the gamma data and the filtered data should be saved.

9.17 Post acquisitions calibration checks may be required to meet the objectives of the logging program to verify gamma log standardization and dead time correction.

10. Interpretation of Results

10.1 See 8.5 of Guide D 5753 for procedures on log interpretation.

10.2 A valid gamma log is important to establish the distribution of lithology and bedding within a borehole for correlation purposes, for different logs run in the same bore-

hole (see Fig. 4), and for the extrapolation of results between boreholes (see Fig. 2).

10.2.1 Except at sites contaminated by radioactive waste, the measured gamma photons originate from the radioactive decay of naturally-occurring isotopes of Potassium-40 and daughter products of Uranium-238 and Thorium-232 (see Fig. 6).

10.2.2 Gamma logs can be analyzed individually (that is, borehole lithology).

10.2.3 Gamma logs can be analyzed as part of a suite to take advantage of the synergistic nature of log data.

10.3 The gamma log should be depth correlated with the other geophysical logs as the first step to interpretation. This is especially important for logs that use the gamma data for depth adjustment.

10.3.1 The gamma log data may be filtered, edited, combined and merged with other log values.

10.3.2 Final log headers are filled out and attached to the data.

10.3.3 The gamma log may be plotted at different scales for the purpose of interpreting, summarizing and presenting the final data.

10.4 Other pertinent information including borehole construction (casing size), drilling history (hole size, drill method, penetration rate, core loss, fluid loss, etc.) and geologic information should be integrated with the gamma log data.

10.4.1 Many of the borehole effects on the gamma log, such as correction for attenuation of steel casing and borehole fluid, can be normalized with empirical data to facilitate interpretation. This is especially important in comparing gamma logs from boreholes logged with different completion designs.

10.4.2 It is also possible to normalize the gamma log for well construction if it is possible to log a similar borehole prior to completion and again after a similar scheme.

10.5 Gamma logs commonly are the primary indicator of geologic structure and stratigraphy to be used as a guide in installing well screens, positioning cement plugs, bentonite seals or packers, etc.

10.5.1 When gamma logs are used as indicators of bed boundaries, the bed contact is usually identified as the point where the log measures half of the total change in amplitude across the bed contact (see Fig. 5).

10.6 Gamma logs obtained for depth correlation on logging

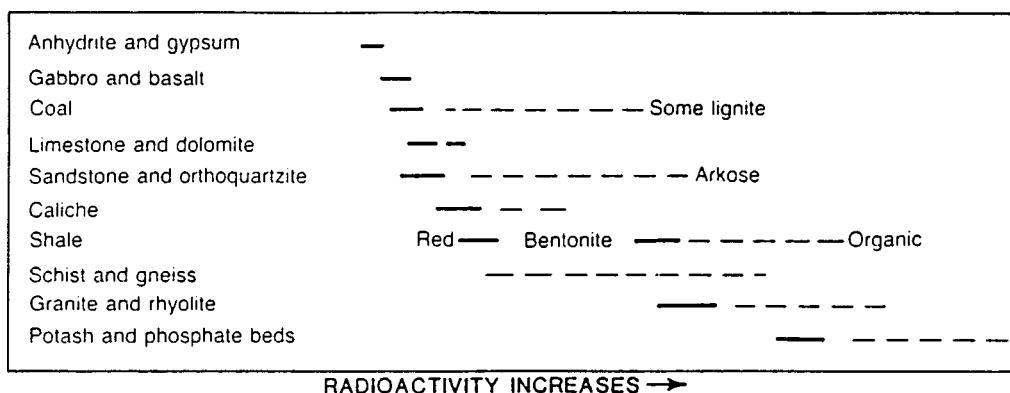


FIG. 6 Range of Relative Gamma Activity of Common Rocks

runs using different probes may not produce the same count rates at each depth because of differences in detector efficiencies and probe designs.

10.7 Gamma logs may be applied to correlate lithology between boreholes based upon the characteristic gamma activity of specific beds or formations (See Fig. 6). Gamma logs can be used to determine the continuity of lithology, strike, and dip of beds between boreholes, and to infer the existence of faults and other discontinuities.

10.8 The primary application of gamma logs for geotechnical applications assumes a correlation between gamma activity and the proportion of fine-grained material in the formation. The gamma log may be used to calculate a clay volume or percentage. This assumption is frequently not valid (for example, phosphatic sands, arkosic sands, non-sedimentary environments, areas of natural radioactive mineralization, etc.) and should be tested in the project area. This testing may consist of cross plots, principal component analysis, and other multivariate statistical techniques. The application of gamma log analysis in the estimation of clay fraction may also be complicated by the presence of more than one clay type, each of which has a distinctly different level of gamma activity.

10.9 Gamma logs can be used to detect the presence of radioisotopes in borehole tracer studies, calibrated in units of radioisotope concentration to assess the degree of radioisotope contamination at radioactive waste sites, and used to locate source rocks in natural radium and radon hazard assessment studies.

11. Report

11.1 Section 9 of Guide D 5753 should be consulted for requirements of the report.

11.2 Providers of gamma logs shall describe: the components of the gamma logging system, the principles of the methods used, methods and results of calibration and standardization, performance verification (repeat sections, ASDE, cor-

relation with other logs and key features such as bottom of steel casing, etc.) and uniqueness of interpretation.

11.3 Information on the software and algorithms used should be documented.

11.4 Any deviations from this guide should be documented.

11.5 Presentation of gamma logs should be designed to meet project objectives. At a minimum, depth (y-axis) and units of measurement (x-axis) scales should be clearly marked. There may be a difference between presentations of data collected in the field versus in the final report. Any scale “wraps” should be clearly marked (see Fig. 1).

11.5.1 Gamma logs are typically displayed with linear scales in counts per second or API units (see Fig. 1).

11.5.2 The digital data should be provided in ASCII format and include depth referenced gamma values and all pertinent header and calibration information; for example, Log ASCII Standard format (LAS).

11.5.3 Field plots typically are generated at the time of logging or immediately upon completion of data acquisition. These plots may be delivered in the field or may be discarded at some point later in the project. They are not typically included in the report.

11.5.4 Final log plots are typically generated post acquisition. They consist of the filtered and edited gamma data combined and merged with logical combinations of other log data. Final log plots are typically plotted in an industry standard format such as API format and may be included in the report.

11.5.5 Summary log plots may be generated (typically at reduced scales) to incorporate other logs, revent data, and interpretations. These plots are generally included in the report.

12. Keywords

12.1 borehole geophysics; dead time correction; gamma log; natural gamma log; nuclear statistics; radioisotope; well construction; well logging

REFERENCES

- (1) *Glossary of Terms and Expressions Used in Well Logging*, 2nd Ed., Society of Professional Well Log Analysts, Houston, TX, 1984.
- (2) Bateman, R. M., *Log Quality Control*, IHRDC Boston, MA, 1985.
- (3) Doveton, J. H., *Log Analysis of Subsurface Geology-Concepts and Computer Methods*, John Wiley and Sons, Inc., New York, NY, 1986.
- (4) Hallenberg, J. K., *Geophysical Logging for Mineral and Engineering Applications*, Penn Well Books.
- (5) Hearst, J. R., and Nelson, P. H., *Well Logging for Physical Properties*, McGraw-Hill Book Co., 1985.
- (6) Hilchie, D. W., “Caliper Logging-Theory and Practice,” *The Log Analyst*, Vol 9, No. 1, 1968, pp. 3–12.
- (7) Hilchie, D. W., *Applied Open Hole Log Interpretation for Geologists and Engineers*, Douglas W. Hilchie Inc., 1978.
- (8) Keys, W. S., *Borehole Geophysics Applied To Ground-Water Investigations, Techniques of Water-Resources Investigations of the United States Geological Survey*, Book 2, Chapter E2, 1990.
- (9) Pirson, S. J., *Handbook of Well Log Analysis*, Prentice Hall, Englewood Cliffs, NJ, 1963.
- (10) Prenskey, S. E., “Geological Applications of Well Logs-An Introductory bibliography and Survey of Well Logging Literature Through September 1986, Arranged by Subject and First Author,” *The Log Analyst*, Parts A and B, Vol. 28, No. 1, 1987, pp. 71–107; Part C, Vol. 28, No. 2, 1987, pp. 219–248.
- (11) Prenskey, S. E., “Geological Applications of Well Logs-An Introductory Bibliography and Survey of Well Logging Literature; Annual Update, October 1986 through September 1987,” *The Log Analyst*, Vol 28, No. 6, 1987, pp. 558–575. Bibliographic update for October 1987 through September 1988, *The Log Analyst*, Vol 29, No. 6, 1988, pp. 426–443.
- (12) Prenskey, S. E., “Bibliography of Well Log Applications,” October 1988-September 1989, pp. 448–470. October 1989-September 1990, annual update; *The Log Analyst*, Vol 31, No. 6, 1990, pp. 395–424.
- (13) Theys, Philippe, *Log Data Acquisition and Quality Control*, Editions Technip, distributed in U.S. by Gulf Publishing Co., Houston, Texas, 1991.
- (14) Wahl, J. S., “Gamma-Ray Logging,” *Geophysics*, Vol 48, No. 11, 1983, pp. 1536–1550.
- (15) Hodges, R. E., Calibration and Standardization of Geological Well-Logging Equipment for Hydrologic Applications, *U.S. Geological Survey Water Resources Investigation Report 88-4058*, 1988.

 **D 6274**

The American Society for Testing and Materials takes no position respecting the validity of any patent rights asserted in connection with any item mentioned in this standard. Users of this standard are expressly advised that determination of the validity of any such patent rights, and the risk of infringement of such rights, are entirely their own responsibility.

This standard is subject to revision at any time by the responsible technical committee and must be reviewed every five years and if not revised, either reapproved or withdrawn. Your comments are invited either for revision of this standard or for additional standards and should be addressed to ASTM Headquarters. Your comments will receive careful consideration at a meeting of the responsible technical committee, which you may attend. If you feel that your comments have not received a fair hearing you should make your views known to the ASTM Committee on Standards, 100 Barr Harbor Drive, West Conshohocken, PA 19428.