



2/22/06	PROG. REVIEW #1
3/10/06	PROG. REVIEW #2
3/27/06	PROG. REVIEW #3
4/10/06	PROG. REVIEW #4
5/3/06	PRELIM. DESIGN

MARK	DATE	DESCRIPTION
	DRAWING ISSUED:	05/03/2006

NGB PROJECT NO.: 220027

PRELIMINARY DESIGN

DRAWING TITLE:  
2ND FLOOR PLAN - HVAC

DRAWING NUMBER:

M112

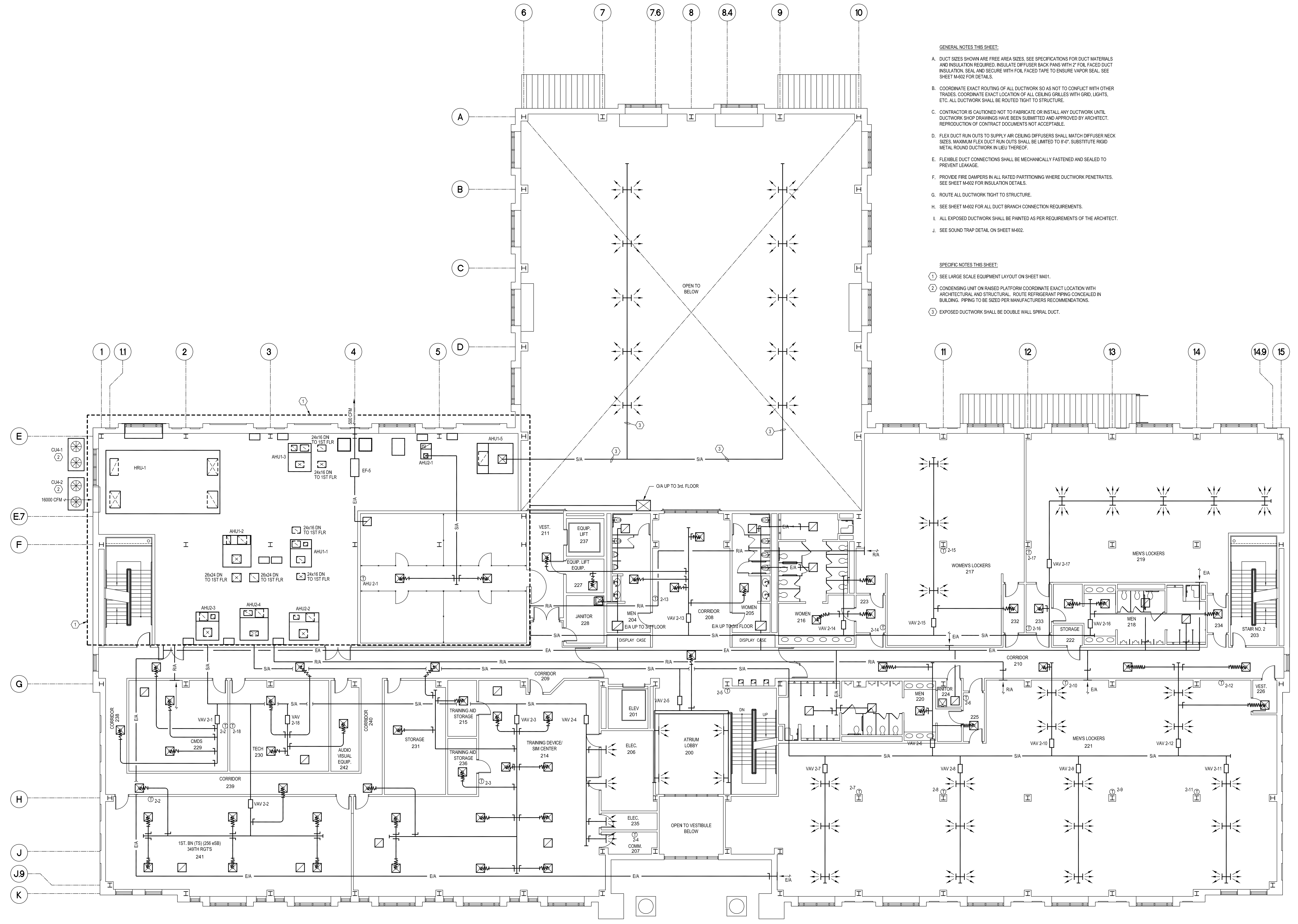
SHEET 67 OF 106

GENERAL NOTES THIS SHEET:

- DUCT SIZES SHOWN ARE FREE AREA SIZES. SEE SPECIFICATIONS FOR DUCT MATERIALS AND INSULATION REQUIRED. INSULATE OFFISER BACK PANS WITH 2" FOIL FACED DUCT INSULATION. SEAL AND SECURE WITH FOIL FACED TAPE TO ENSURE VAPOR SEAL. SEE SHEET M-602 FOR DETAILS.
- COORDINATE EXACT ROUTING OF ALL DUCTWORK SO AS NOT TO CONFLICT WITH OTHER TRADES. COORDINATE EXACT LOCATION OF ALL CEILING GRILLES WITH GRID, LIGHTS, ETC. ALL DUCTWORK SHALL BE ROUTED TIGHT TO STRUCTURE.
- CONTRACTOR IS CAUTIONED NOT TO FABRICATE OR INSTALL ANY DUCTWORK UNTIL DUCTWORK SHOP DRAWINGS HAVE BEEN SUBMITTED AND APPROVED BY ARCHITECT. REPRODUCTION OF CONTRACT DOCUMENTS NOT ACCEPTABLE.
- FLEX DUCT RUN OUTS TO SUPPLY AIR CEILING DIFFUSERS SHALL MATCH DIFFUSER NECK SIZES. MAXIMUM FLEX DUCT RUN OUTS SHALL BE LIMITED TO 8'-0". SUBSTITUTE RIGID METAL ROUND DUCTWORK IN LIEU THEREOF.
- FLEXIBLE DUCT CONNECTIONS SHALL BE MECHANICALLY FASTENED AND SEALED TO PREVENT LEAKAGE.
- PROVIDE FIRE DAMPERS IN ALL RATED PARTITIONING WHERE DUCTWORK PENETRATES. SEE SHEET M-602 FOR INSULATION DETAILS.
- ROUTE ALL DUCTWORK TIGHT TO STRUCTURE.
- SEE SHEET M-602 FOR ALL DUCT BRANCH CONNECTION REQUIREMENTS.
- ALL EXPOSED DUCTWORK SHALL BE PAINTED AS PER REQUIREMENTS OF THE ARCHITECT.
- SEE SOUND TRAP DETAIL ON SHEET M-602.

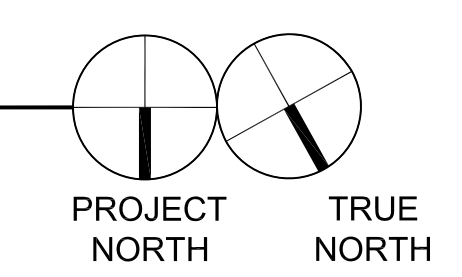
SPECIFIC NOTES THIS SHEET:

- SEE LARGE SCALE EQUIPMENT LAYOUT ON SHEET M-601.
- CONDENSING UNIT ON RAISED PLATFORM COORDINATE EXACT LOCATION WITH ARCHITECTURAL AND STRUCTURAL. ROUTE REFRIGERANT PIPING CONCEALED IN BUILDING. PIPING TO BE SIZED PER MANUFACTURERS RECOMMENDATIONS.
- EXPOSED DUCTWORK SHALL BE DOUBLE WALL SPIRAL DUCT.



**2ND FLOOR PLAN - HVAC**

SCALE 1/8" = 1'-0"



**LUCIEN T. VIVIEN JR. & ASSOC., INC.**  
CONSULTING ENGINEERS  
121 HICKORY AVENUE HARAHAN, LA 70123 (504) 228-5409

These drawings are conceptual in nature and are not suitable for construction. It is the intent of these documents to clearly delineate the baseline minimum scale, scope and quality of the project. It is the responsibility of the design-builder that his proposal provides for a complete and functional facility responding to relative Army National Guard criteria, recognized industry standards and applicable building codes regardless of the content of these conceptual drawings. Further, it will be the responsibility of the successful design-builder and his architect of record to prepare complete construction documents responding to the fullest intent of the conceptual drawings and specifications.