

FEATURES & SPECIFICATIONS

INTENDED USE

The I-BEAM is an ideal one-for-one replacement of common Metal Halide high bays system. The unique Cool Running Technology provides trouble-free operation in ambient spaces up to 65°C. Applications include manufacturing, warehousing, commercial facilities and retail. The Fluorescent I-Beam performs at mounting heights from 15'-40'.

ATTRIBUTES

I-BEAM features Cool Running Technology for ambient operation up to 65°C. Backed by a full 5-year ballast warranty at 55°C, 3-year ballast warranty at 65°C. Designed for optimum performance using T5HO fluorescent lamps. The I-BEAM provides the best option for applications requiring a rugged fixture construction coupled with excellent fixture performance. Optical designs for your choice of narrow distribution for aisles or wide distribution for general lighting. Typical arrangement provide over 90% luminaire efficiency. Available with 4 or 6 lamp cross section with your choice of full direct component or with uplight. Easy two-point mounting your choice of tong hangers or convenient aircraft cable provides reliable installation, eliminates fixture sag and provides sturdy installation. Available in MVOLT (120-277), 347 or 480 volt.

CONSTRUCTION

Channel is formed of heavy-duty code gauge steel to stand up to the most demanding elements. Lamp holder assembly protects from incidental damage to reflectors during installation. Sockets include secure positioning rotating collars with enclosed contacts. Access plate on the back of the channel housing allows quick and easy wiring.

FINISH

Channel is high gloss white baked enamel; five-stage iron phosphate pretreatment ensures superior paint adhesion and rust resistance.

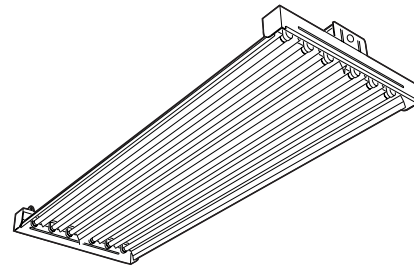
OPTICAL SYSTEM

Two optical systems available. Narrow distribution (ND) is ideal for narrow or aisle lighting applications and features precision formed segmented optics utilizing Alanod Miro® 4 specular aluminum reflector. Provides 95% reflectivity and warranted for 25 years. Wide distribution (WD) includes high reflectance white finish for general or open areas.

ELECTRICAL SYSTEM

Thermally protected, resetting, Class P, HPF, A+ sound-rated electronic ballast. AWM TFM or THHN wire used throughout rated for required temperatures.

Catalog Number	
Notes	Type



I-BEAM
FLUORESCENT
HIGH BAY LIGHTING

T5

Fluorescent High Bay

COOL
RUNNING
TECHNOLOGY

PATENT PENDING

T5
Technology

Specifications

Length:	48 3/8 (1,227)
Width:	17 5/8 (448)
Depth:	4 3/8 (111)
Weight:	17 lbs. (7.71 kg)

All dimensions are inches (millimeters).
Specifications subject to change without notice.

INSTALLATION

A variety of mounting configurations are available including tong hanger, stems, chain sets and aircraft cable.

LISTING

UL/C-UL listed to US and Canadian safety standards for ambient operation up to 65°C. Suitable for damp locations.

WARRANTY

Guaranteed for one year against mechanical defects in manufacturing. Ballast warranty - Five years when operated in 55°C or less ambient conditions, three years when operated in 65°C or less ambient conditions.

ORDERING INFORMATION

Example: **IB 454L**

Series IB I-BEAM	Number of lamps/wattage Lamps Installed¹ 454L 4-Lamp, 54W, T5HO 654L 6-Lamp, 54W, T5HO Unlamped 454 4-Lamp, 54W, T5HO 654 6-Lamp, 54W, T5HO	Distribution (blank) Narrow distribution with uplight NDS Narrow distribution, no uplight WD Wide distribution with uplight WDS Wide distribution, no uplight	Voltage (blank) MVOLT ² 347 347 volt 480 480 volt	Ballast (blank) Program Start, 1.0 BF	Lamps Installed (blank) F54T5HO/841 LP835 F54T5HO/835 LP830 F54T5HO/830 Amalgam Lamps LP841A F54T5HO/841 LP835A F54T5HO/835 LP830A F54T5HO/830
Ballast Configuration (blank) Standard Configuration ³ 2/3 Two, three-lamp ballasts 2/2 Two, two-lamp ballasts				Options EL14 Emergency battery pack (1400 lumens) ⁴ MSI Occupancy sensor-prewired ⁵ GLR Internal fast blow fusing ⁵ OCS Reloc® OnePass® 5' installed ⁵ FSP Integral side panels	

NOTES:

- Lamps installed are F54T5HO/841.
- 120-277 volt.
- Ballast included:
6-lamp—2 + 4-lamp ballast
4-lamp—4-lamp ballast.
- UL Listed 25°C.
- Specify voltage.

Accessories

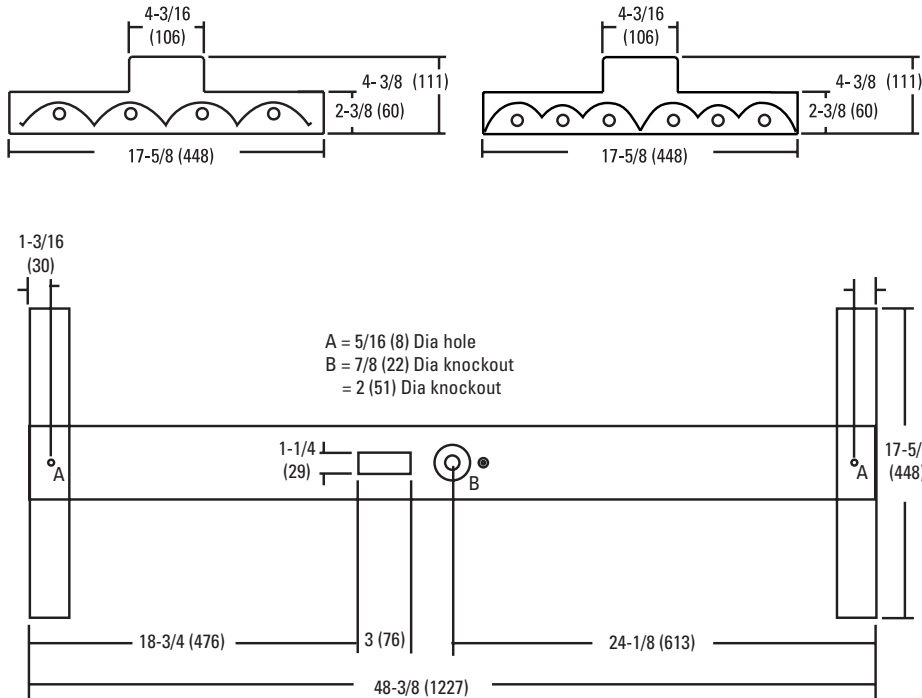
Order as a separate catalog number.

IBAC120	Aircraft cable 10' Y hanger (One pair)
IBAC240	Aircraft cable 20' Y hanger (One pair)
THUN	Tong hanger (two required)
WGIBZ	Wireguard, zinc-coated
HC36	Chain Hanger, 36"

I-BEAM T5

DIMENSIONS

Inches (millimeters). Subject to change without notice.



PHOTOMETRICS

Calculated using the zonal cavity method in accordance with IESNA LM41 procedure. Floor reflectances are 20%. Lamp configurations shown are typical. All data based on 25°C. Full photometric data on these and other configurations available upon request.

IB 454

Report: **LTL14006**
LUMENS PER LAMP **4400**

RCR	Coefficients of Utilization																			
	pf	20%					30%													
		pc	80%	50%	30%	50%	30%	10%	50%	30%	10%									
0	118	118	118	107	107	107	101	101	101											
1	109	104	101	96	93	91	91	89	87											
2	100	92	86	85	81	77	81	77	74											
3	92	82	75	76	71	66	73	68	64											
4	85	74	66	69	62	57	66	60	56											
5	78	67	59	62	56	51	60	54	50											
6	73	61	53	57	50	45	55	49	44											
7	68	56	48	52	46	41	51	45	40											
8	64	51	43	49	42	37	47	41	37											
9	60	48	40	45	39	34	44	38	33											
10	57	44	37	42	36	31	41	35	31											

Zonal Lumen Summary			
Zone	Lumens	% Lamp	% Fixture
0° - 30°	6218	35.3	35.3
0° - 40°	9065	51.5	51.4
0° - 60°	13684	77.7	77.6
0° - 90°	16413	93.3	93.1
90° - 180°	1214	6.9	6.9
0° - 180°	17626	100.1	100.0

IB 454 WD

Report: **LTL14005**
LUMENS PER LAMP **4400**

RCR	Coefficients of Utilization																			
	pf	20%					30%													
		pc	80%	50%	30%	50%	30%	10%	50%	30%	10%									
0	110	110	110	100	100	100	94	94	94											
1	100	96	92	88	85	82	83	80	78											
2	91	83	77	76	71	67	72	68	64											
3	83	73	65	67	61	56	63	58	54											
4	75	64	56	59	52	47	56	50	46											
5	69	57	49	53	46	40	50	44	39											
6	64	51	43	47	40	35	45	39	34											
7	59	46	38	43	36	31	41	35	30											
8	55	42	34	39	32	28	37	31	27											
9	51	39	31	36	29	25	34	29	24											
10	48	36	28	33	27	22	32	26	22											

Zonal Lumen Summary			
Zone	Lumens	% Lamp	% Fixture
0° - 30°	3911	22.2	23.6
0° - 40°	6432	36.5	38.8
0° - 60°	11655	66.2	70.3
0° - 90°	15190	86.3	91.7
90° - 180°	1381	7.8	8.3
0° - 180°	16571	94.2	100.0

IB 654

Report: **LTL14055**
LUMENS PER LAMP **4400**

RCR	Coefficients of Utilization																			
	pf	20%					30%													
		pc	80%	50%	30%	50%	30%	10%	50%	30%	10%									
0	117	117	117	108	108	108	102	102	102											
1	108	103	99	95	92	89	90	88	86											
2	98	90	84	84	79	75	80	76	72											
3	90	80	72	74	68	63	71	66	62											
4	83	71	63	67	60	55	64	58	53											
5	77	64	56	60	53	48	58	52	47											
6	71	58	50	55	48	42	53	46	42											
7	66	53	45	50	43	38	48	42	37											
8	62	49	41	46	39	34	45	38	34											
9	58	45	37	43	36	31	41	35	31											
10	54	42	34	40	33	29	39	32	28											

Zonal Lumen Summary			
Zone	Lumens	% Lamp	% Fixture
0° - 30°	8275	31.3	31.5
0° - 40°	12681	48.0	48.2
0° - 60°	20122	76.2	76.5
0° - 90°	25014	94.8	95.2
90° - 180°	1272	4.8	4.8
0° - 180°	26287	99.6	100.0



Lithonia Lighting

Acuity Lighting Group, Inc.

Fluorescent

One Lithonia Way, Conyers, GA 30012

Phone: 800-858-7763 Fax: 770-929-8789

In Canada: 160 avenue Labrosse, Pointe-Claire, P.Q., H9R 1A1

www.lithonia.com