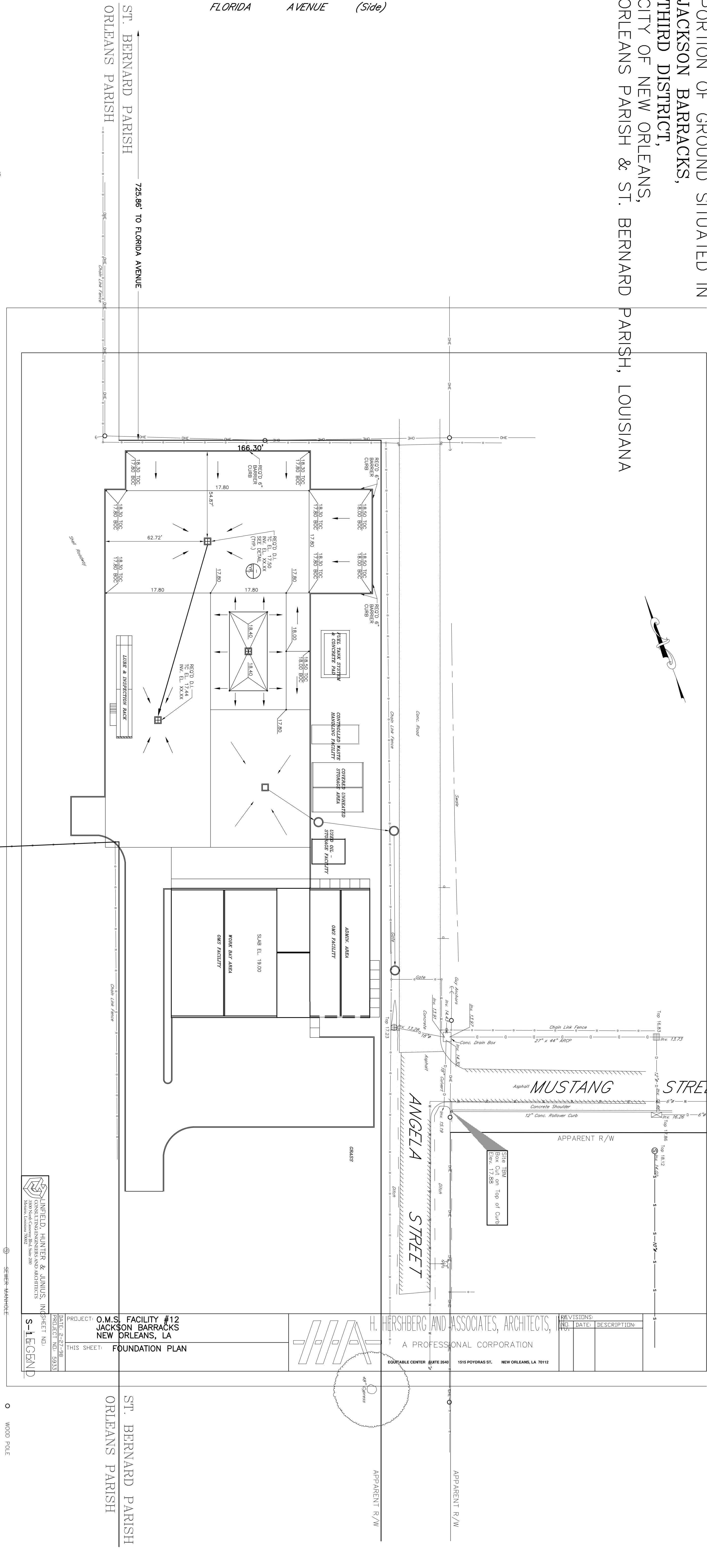
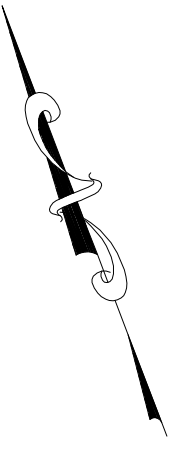


PORTION OF GROUND SITUATED IN JACKSON BARRACKS, THIRD DISTRICT, CITY OF NEW ORLEANS, ORLEANS PARISH & ST. BERNARD PARISH, LOUISIANA

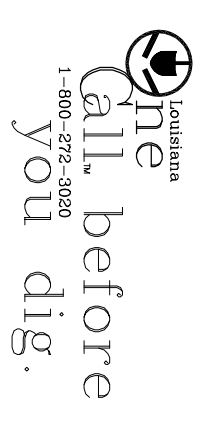


NO.	DATE	DESCRIPTION

H. HERSHBERG AND ASSOCIATES, ARCHITECTS, A PROFESSIONAL CORPORATION
 1515 POYDRAS ST., NEW ORLEANS, LA 70112

PROJECT: O.M.S. FACILITY #12 JACKSON BARRACKS NEW ORLEANS, LA
 DATE: 2-21-98
 THIS SHEET: FOUNDATION PLAN
 PROJECT NO: 5933
 DRAWING NO: EE-2836

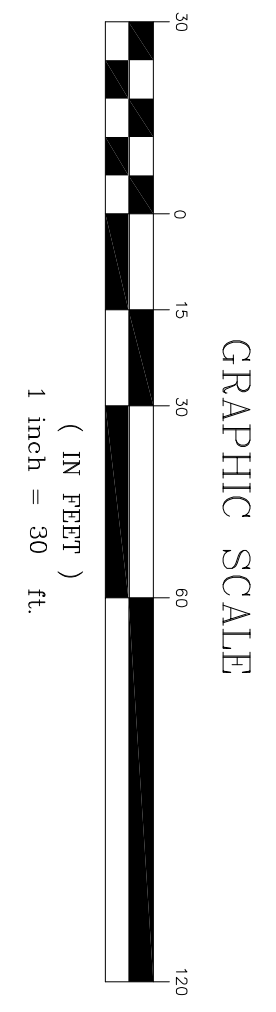
- LEGEND**
- WOOD POLE
 - SEWER MANHOLE
 - OVERHEAD ELECTRIC
 - ⊕ DRAIN INLET ROUND
 - ⊕ DRAIN INLET SQUARE
 - ⊕ TREE
 - ☒ CATCH BASIN
 - DRAIN LINE
 - FIRE HYDRANT
 - WATER LINE
 - CARO DATUM ELEVATION



NOTE: The locations of underground and other visible utilities shown hereon have been determined from data and/or extracted from records made available to us by agencies controlling such records. Where found, the surface locations are shown. The accuracy of such locations is not guaranteed. Each agency should be contacted relative to the precise location of its underground installation prior to any reliance upon the accuracy of such data shown hereon, including to excavation and digging.

LANDMARK SURVEYING, INC.
 1400 Delaney Avenue, Suite A
 Hammond, Louisiana 70123

REVISED 1-27-98 TO SHOW INVERTS ON DRAIN BOX
 DATE: December 8, 1997
 SCALE: 1"=30'
 JOB NO. 970657
 PROFESSIONAL LAND SURVEYOR
 DRAWING NO. EE-2836



GRAPHIC SCALE

DUBREUIL STREET (Side)

SURVEY MADE AT THE REQUEST OF:
 H. HERSHBERG & ASSOCIATES

PROFESSIONAL LAND SURVEYOR