

LUMINAIR SCHEDULE

ID	DESCRIPTION	MOUNTING	MFR	PART #	FINISH	LAMPS #	LAMP TYPE	WATTAGE	FIXTURE NOTES	INSTALLATION NOTES
F1	2X2 TROFFER	GRID	LSI INDUSTRIES	LEL 6 2 24 955HO 27T		2	T5 HO	24		CONTROLLED BY MOTION SENSOR
F1A	2X2 TROFFER	GRID	LSI INDUSTRIES	LEL 6 2 24 955HO 27T		2	T5 HO	24		CONTROLLED BY SECONDARY LIGHT SWITCH
F1E	2X2 TROFFER WITH EMERGENCY BACKUP & NIGHT LIGHT	GRID	LSI INDUSTRIES	LEL 6 2 24 955HO EM 27T		2	T5 HO	24		NIGHT LIGHT WITH 90 MIN EMERGENCY POWER
F2	2X4 TROFFER	CEILING	COOPER LIGHTING	2FR8-432A-UNV-EB01-U		4	T8	32		
F2E	2X4 TROFFER WITH EMERGENCY BACKUP & NIGHT LIGHT	CEILING	COOPER LIGHTING	2FR8-432A-27T-E L-EB01-2-U		4	T8	32	2 BALLASTS	2 LAMPS ARE NIGHT LIGHT W/ 90 MIN EMERGENCY POWER FOR LIGHTING
F3	8FT CORELITE WALL MOUNTED	WALL(SEE ARCH ELEVATIONS)	COOPER LIGHTING	AN-KO-278-1C-UN V-SU-NA-8		2	T8	32		CONTROLLED BY MOTION SENSOR, SEE ARCHITECTURAL ELEVATIONS FOR PLACEMENT
F4	12FT CORELITE WALL MOUNTED	WALL(SEE ARCH ELEVATIONS)	COOPER LIGHTING	AN-KO-278-1C-UN V-SU-NA-12		2	T8	32		CONTROLLED BY MOTION SENSOR, SEE ARCHITECTURAL ELEVATIONS FOR PLACEMENT
F5	YN SERIES WRAPAROUND LUMINAIRE	CEILING	COOPER LIGHTING	4-YN-2-32-A-UNV-GL-EB0		2	T8	32		
F6	TRACE LITE LED VAPORPROOF LIGHT	WALL (SEE ARCH ELEVATIONS)	BARRON LIGHTING GROUP	TLED804-20		1	LED	20		
F7	EXTERIOR LED CAN LIGHT	EVE	AIRTIGHT MEDIUM BASE I.C. RATED 6" CAN LIGHT			1	LED FLOOD LIGHT, UTILITECH PRO PAR 38	30	R-40 BAFFLE SATIN ALUM.	1000 LUMENS, 5000°K
F7E	EXTERIOR LED CAN LIGHT W/EMERGENCY BACKUP	EVE	AIRTIGHT MEDIUM BASE I.C. RATED 6" CAN LIGHT			1	LED FLOOD LIGHT, UTILITECH PRO PAR 38	30	R-40 BAFFLE SATIN ALUM.	W/ 90 MIN EMERGENCY POWER FOR LIGHTING, 1000 LUMENS, 5000°K
F8	LED CAN LIGHT	CEILING	AIRTIGHT MEDIUM BASE I.C. RATED 6" CAN LIGHT			1	LED FLOOD LIGHT, UTILITECH PRO PAR 38	30	R-40 BAFFLE WHITE	1000 LUMENS, 5000°K
F9	LED EXTERIOR SCENCE	EXTERIOR WALL	LITHONIA LIGHTING	MSR LED 2 10A100/40 SR3 MVLDT PE		1	LED			COLOR BY ARCHITECT
F10	VAPORTIGHT EXTERIOR LIGHTING	SURFACE MOUNT ON CANOPY	COOPER LIGHTING	VT1-132-PCR-UNV-EB01-AL-U		1	T8	32		PROVIDE PHOTO CELL TO CONTROL LIGHTS
X1	EXIT SIGN	CEILING	EELP	XE2RM EM			LED			
X2	EXIT SIGN	WALL	EELP	XE2RM EM			LED			

GENERAL LIGHTING NOTES

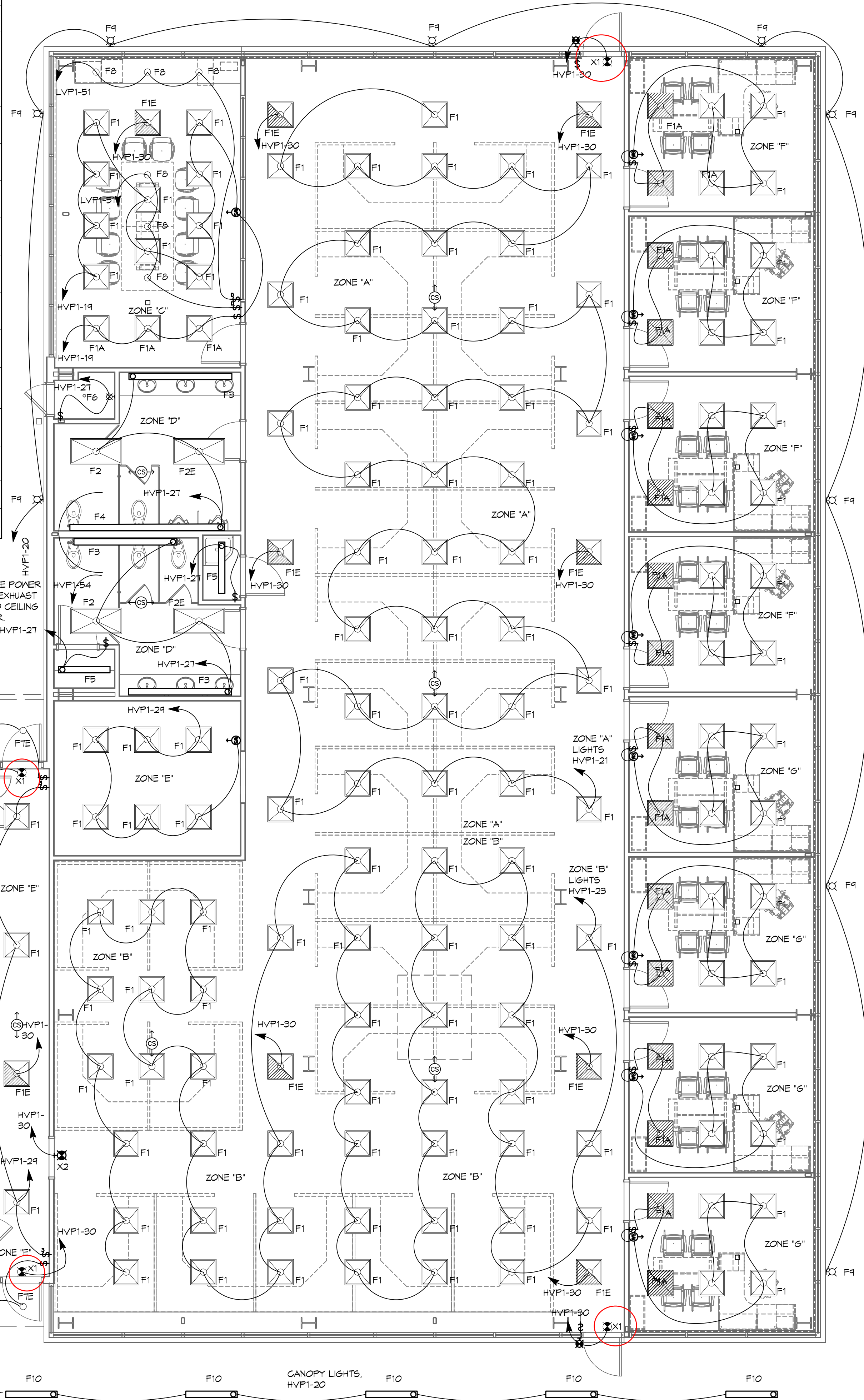
- CONTRACTOR SHALL NOT SHARE NEUTRALS BETWEEN DIFFERENT CIRCUITS. INDIVIDUAL NEUTRALS SHALL BE RUN FOR EACH CIRCUIT.
- REFER TO EXTERIOR ELEVATIONS (SHEET A4) FOR MOUNTING LOCATIONS OF F9 LIGHT FIXTURES.

LIGHTING LEGEND

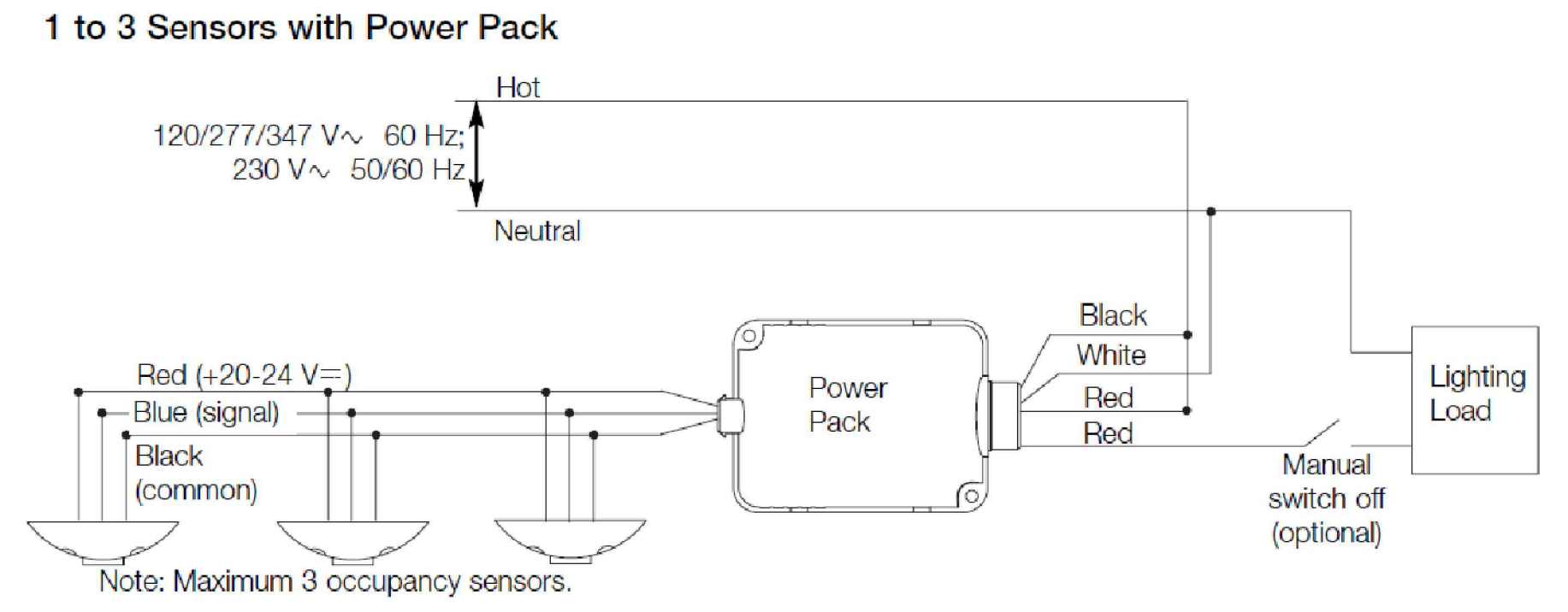
- 2X2 RECESSED FLUORESCENT TROFFER LIGHT FIXTURE
- 2X2 RECESSED FLUORESCENT TROFFER LIGHT FIXTURE WITH EMERGENCY/NIGHT LIGHTING
- 2X2 RECESSED FLUORESCENT TROFFER LIGHT FIXTURE W/ MANUAL LIGHT SWITCH OVERRIDE
- FLOOR STRIP LIGHT FIXTURE
- 6" RECESSED CAN LIGHT FIXTURE
- PENDANT LIGHT FIXTURE
- WALL MTD LIGHT FIXTURE
- CEILING MTD EXIT LIGHT FIXTURE
- WALL MTD EXIT LIGHT FIXTURE
- SINGLE POLE LIGHT SWITCH - COMMERCIAL GRADE 20 AMP 277V
- 3-WAY POLE LIGHT SWITCH - COMMERCIAL GRADE 20 AMP 277V
- DIMMABLE SLIDE SWITCH W/ PRESET - 110V - LEVITON, 6674
- CLING MTD SENSOR - LUTRON LOS CDT 2000 AND 277V PWR PACK FOR LIGHTING AND 120V PWR PACK FOR FANS.
- WALL MTD OCCUPANCY SENSOR - (LUTRON MS-0F56M2-DV 277V)
- CEILING MOUNTED A / V AND HDMI PROJECT(S). SEE E1 FOR CONNECTIONS

DAMMON ENGINEERING, INC.
 Architects & Engineers
 www.dammonengineering.com
 info@dammonengineering.com
 PH: 985.649.5832
 F: 985.641.5990

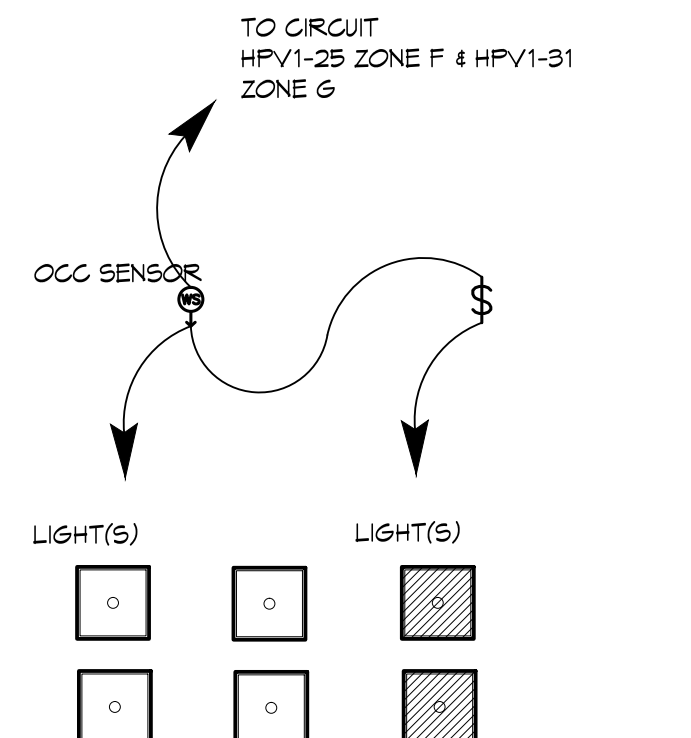
Chief Architect: Kevin J. Kitchin, NCARB
 Chief Engineer: Brian Austin, PE
 554 Old Spanish Trail
 Slidell, LA 70568



INSTALL SEPARATE POWER PACK FOR EACH EXHAUST FAN, CONNECT TO CEILING MOUNTED SENSOR.



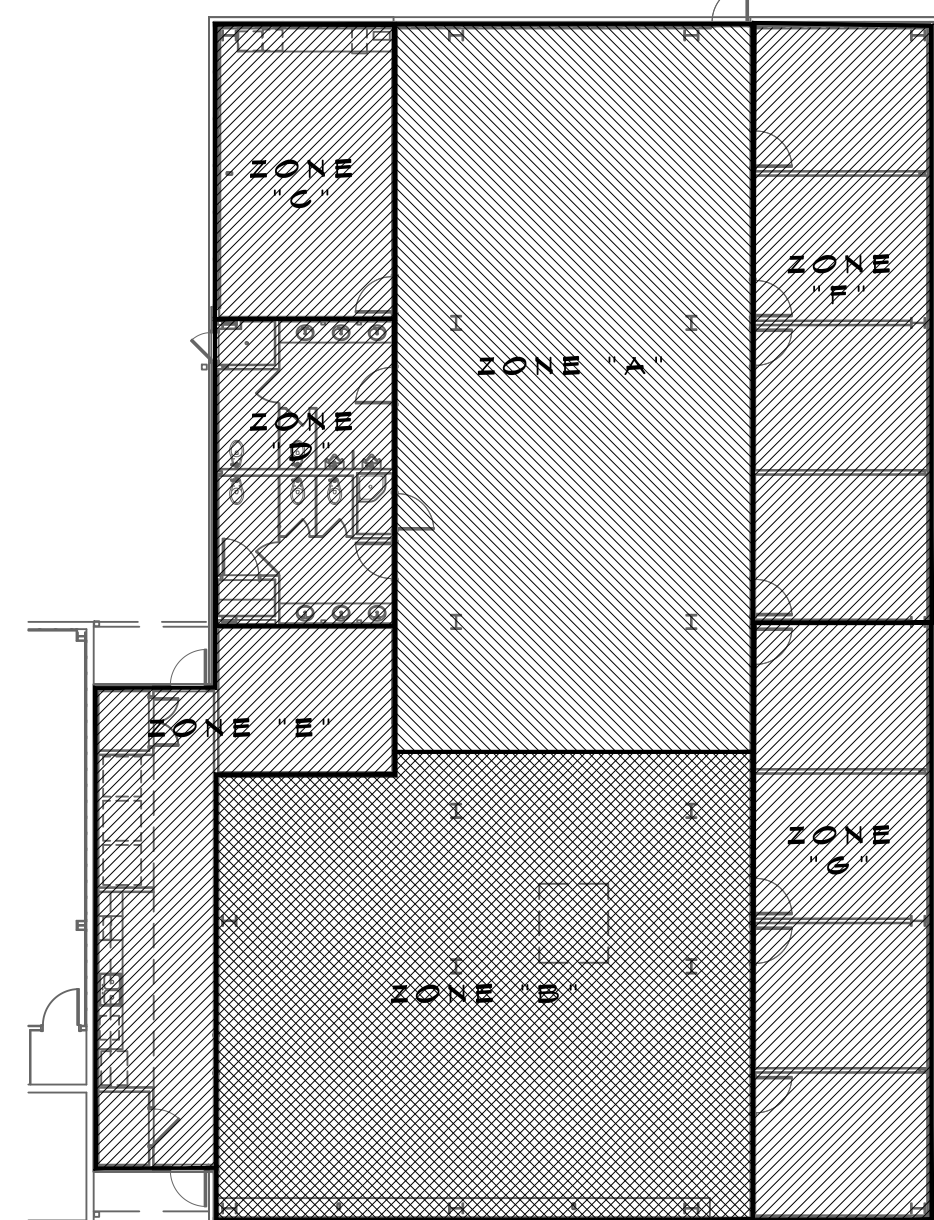
3 WIRING DIAGRAM



2 DIAGRAM - LIGHTING

1 ELECTRICAL PLAN - LIGHTING

ZONE KEY PLAN



REVISIONS

#	DESCRIPTION	DATE

SEAL:

NEW OFFICE BUILDING ADDITION:

TEXTRON
 Marine & Land Systems

252 STONE ROAD
 SLIDELL, LOUISIANA

JOB No: 2209 DATE: APRIL 11, 2015
 DRAWN BY: KJK CHECKED BY: DPD

SHEET TITLE:
 ELECTRICAL PLAN - LIGHTING

DRAWING NUMBER:

112

SHEET No: 26 of 21