

KIP 7.0



KIP 7.0 Windows[®] Driver on Windows 7



KIP Windows Driver:

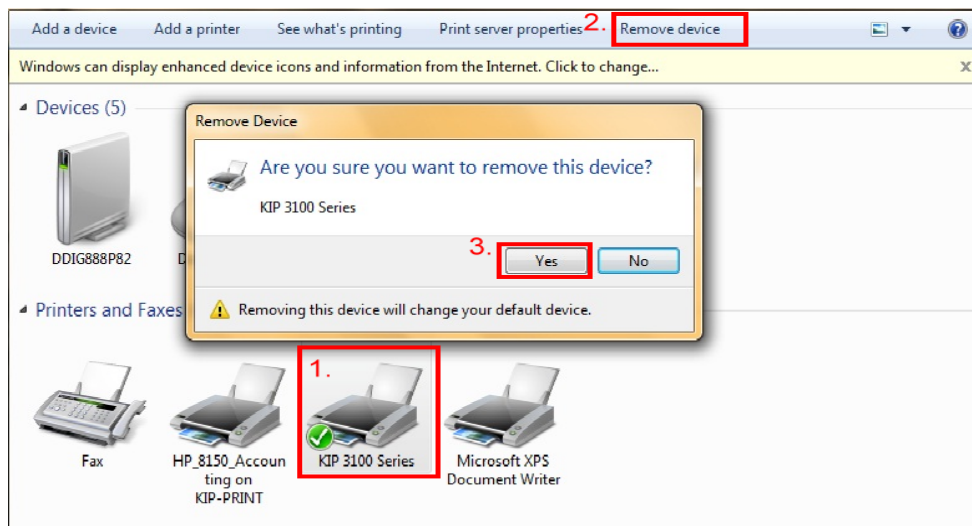
Please follow one of these two methods for installing the KIP Windows Driver in Windows 7.

(Note: Administrator Rights are necessary for installation in both methods)

If a KIP Windows Driver installation has been attempted previously, it needs to be completely removed. This includes the KIP Monitor Port and all files associated with it.


Uninstall Previous Windows Driver Versions

1. Go to **Start Button**→**Devices and Printers**
2. Select the Printer Icon and then select the "Remove Printer" menu item time from the top menu.



3. Driver and the installed KIP Printer Object will be removed.
4. Select an existing Device in the list to get the Print Server Properties menu item to appear in the top menu.



5. Select the Ports tab and remove any KIP Ports in the Ports list. KIP Monitor Ports are most often designated with KIPx.
6. Select the Drivers tabs list. Select any KIP drivers and then select the "Remove" button. The Following window will open. Select "Remove driver and driver package."

7. Select "Ok" to remove the package from the system.
8. Driver package information will be collected and displayed. Select "Delete".
9. Go to **Start Button**→**Accessories**. Locate Command Prompt. Right click on it and choose "Run as an administrator."
10. In the command prompt window type **Net Stop Spooler** and then hit enter.
11. Browse to C:\Windows\System32\Spool\Drivers\W32x86 for 32bit systems or C:\Windows\System32\Spool\Drivers\x64 for 64bit systems.
12. Delete anything that starts with a KA, KI or KU
13. Browse to the folder named "2" and remove anything KAW, KIP or KUW
14. Browse to the folder named "3" and remove anything KAW, KIP or KUW
15. Browse to C:\Windows\System32 and delete any of these files kaw2kppm.dll, kuwxppm.dll, kuwxppms.dll, kuwxppmu.dll if these files exist.
16. Go to **Start Button**→**Accessories**. Locate Command Prompt. Right click on it and choose "Run as an administrator."
17. In the command prompt window type **Net Start Spooler** and then hit enter.
18. To remove System Registry entries:
 - a. Hold the Windows Button on the keyboard and hit the "R" key to access the Windows Run command. Type "Regedit" and then enter.
 - b. Browse to HKLM\System\CurrentControlSet\Control\Print\Printers



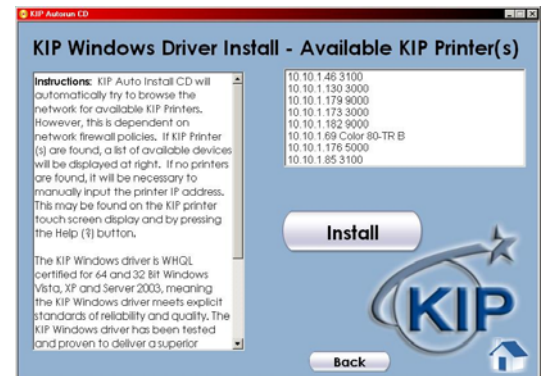
- c. Remove any KIP Printer object keys
 - d. Browse to HKLM\System\CurrentControlSet\Control\Print\Monitors
 - e. Remove KIP Monitor or KIP Printer Port Monitor(s)
19. Reboot the computer.

Method 1 - Installing From the KIP 7.0 Software Installer Disc

1. Once the KIP Software Installer disc is inserted, the AutoPlay feature may start the Software Installer. If it does not, browse to the disc and run "autorun.exe" to start the Software Installer.
2. To install the KIP Windows Driver, select the "Install KIP Software" button.

Note: When selecting the "Install KIP Software" button, the user may receive a popup window from Windows Firewall notifying the user that KIP FT is trying to access the network. Make sure that this file, KIP FT, or kawpdf.exe is unblocked and that it CAN access the network.

3. Select the "KIP Windows Driver" button. This screen will display instructions and all available KIP Printers.



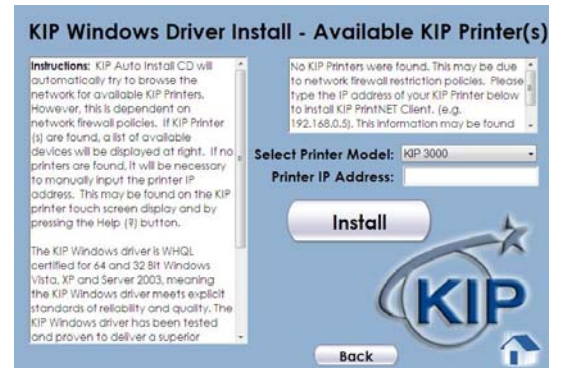
KIP



KIP Windows[®] Driver

4. A list of KIP printers that were found on the network should be listed. Choose the IP address of the KIP Printer that KIP Windows Driver will connect to. If the installer does not display a list of KIP printers to connect to, it may be manually entered.
5. Select "Install."
6. An "Installing Driver Please Wait" message will appear.
7. Add KIP Printer: Success! Message will appear when the installation is successful.
8. The selected KIP Printer will now be listed in the Devices and Printers list.

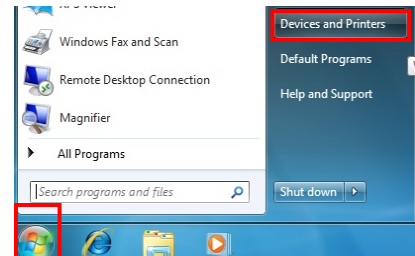
Note: Please see the KIP Windows Driver Manual located on the KIP Software Installer Disc for further instructions and KIP Printer usage.



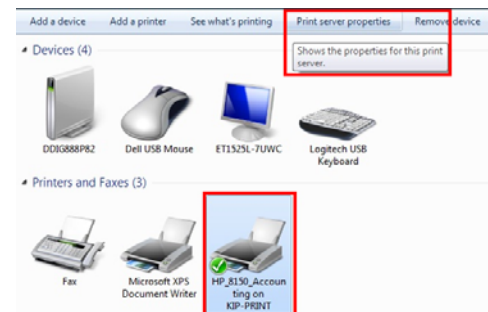


Method 2 - Manual installation

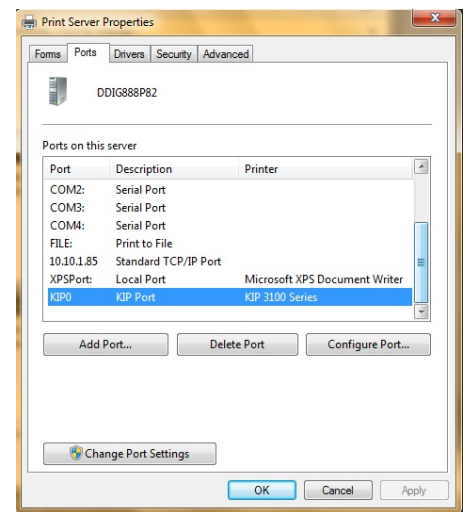
1. Download KUWPD directory to a local PC drive location for ease of use.
2. Go to **Start button**→**Devices and Printers**



3. Click on an installed printer device and go to "Print Server Properties" menu item from the top menu. For example choose the Microsoft XPS Document Writer.

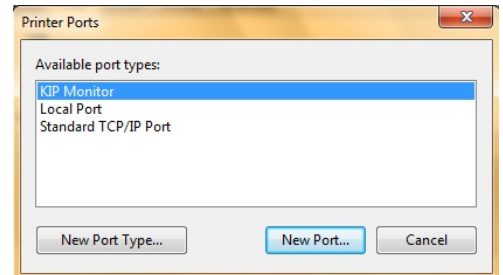


4. Select the Ports tab and then select the "Change Port Settings" button.
5. Select the "Add Port" button.
6. Select the "New Port Type" button.
7. Browse for *Plotter.inf* from the Win7x86 for 32bit systems and x64 for 64bit systems folder.





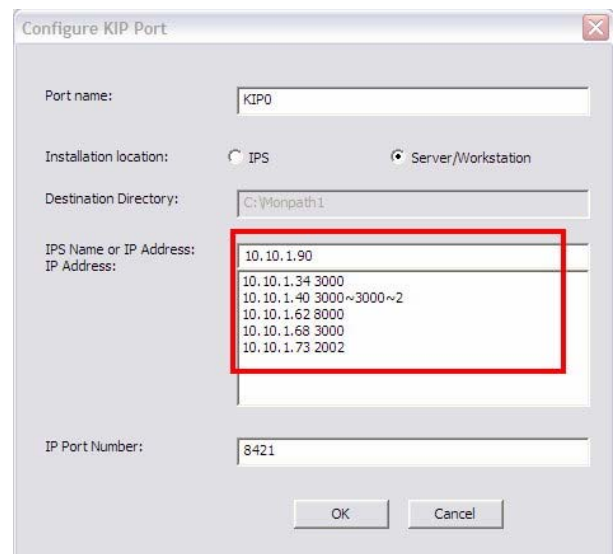
- The KIP Monitor will now be an available port in the Port Selection window.



- Choose KIP Monitor and select the "New Port..." button.

Note: When selecting the "New Port" button, the user may receive a popup window from Windows Firewall notifying the user that the KIP Monitor is trying to access the network. Make sure that it is unblocked and that it CAN access the network. The KIP Monitor Port uses port 8421 to operate, if there are strict firewall settings this may have to be done by IT personnel.

- Choose the desired KIP Printer from the list or type in the IP address of the KIP Printer manually if there are no KIP printers in the list.



Note: For every new KIP printer you are installing a printer for; make sure that the KIP Monitor names get incremented. An example would be KIP0, KIP1, KIP2.

This information is solely for use of KIP Personnel and KIP Authorized Dealers. No part of this publication may be copied, reproduced or distributed in any form without express written permission from KIP. © 2009 KIP.



11. Ensure the following settings:
 - a. Port name: KIP0
 - b. Installation location: Server/Workstation
 - c. IP Port Number: 8421
12. Click the **Start button**→**Device and Printers**. Select the “Add a Printer” menu item from the menu to begin the printer driver installation process.
13. Choose Add Local Printer and select “Next.”
14. Choose “Use an existing port” and then select the KIP Monitor Port.
15. Click on “Have Disk” and browse for “*plotter.inf*” from the Win7x86 for 32bit systems and x64 for 64bit systems folder.
16. Choose the KIP Printer model that the KIP Windows driver will be printing to from the list.
17. Follow the prompts to complete the installation of the KIP Windows Driver.
18. Please check the following settings to ensure that the driver has been properly installed:
 - a. Right click on the installed printer driver object and select “Printer Properties.”
 - b. Select the “Device Property Page” tab and verify the version number.

