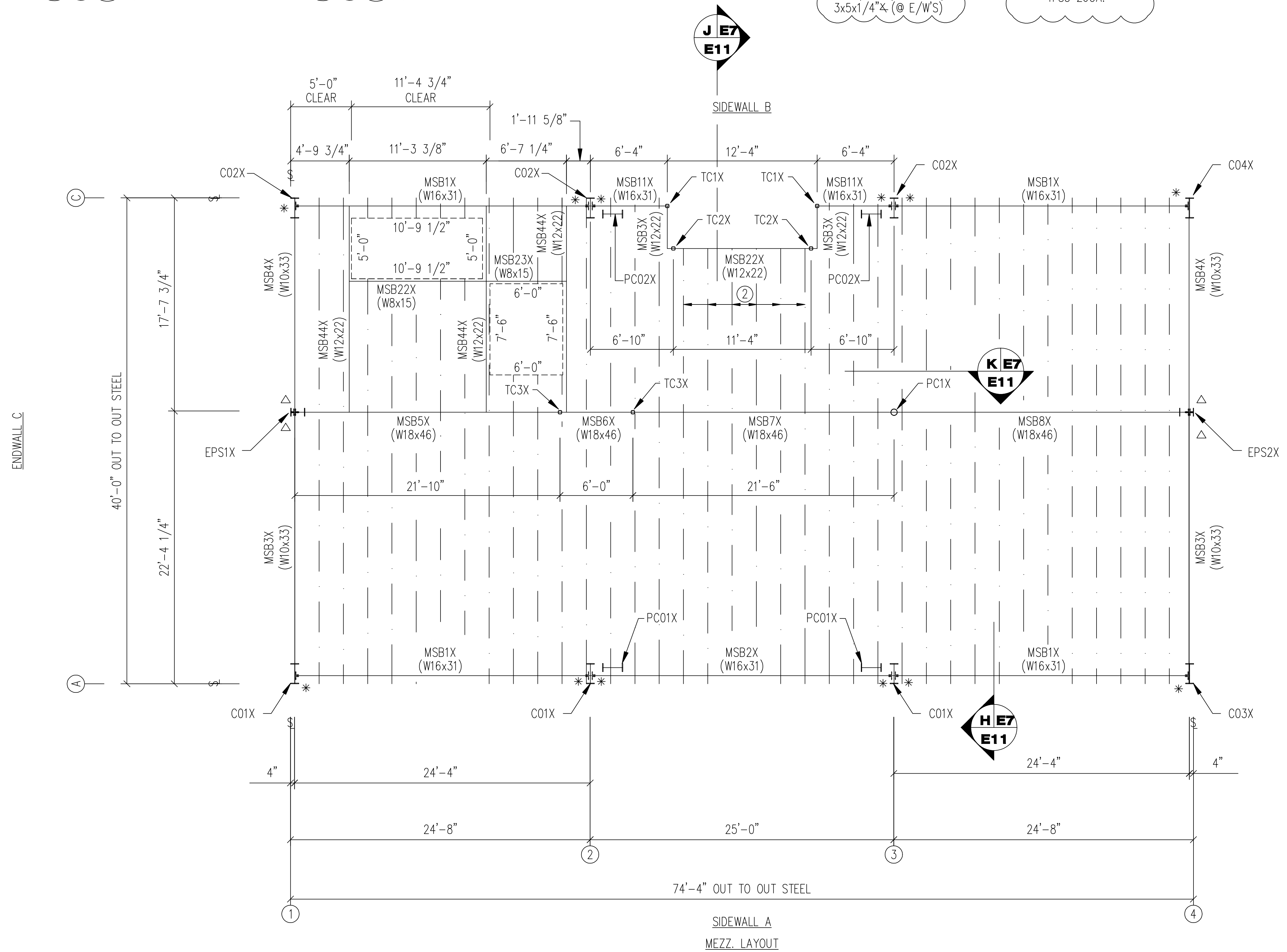


DOUBLE CP1X W/ 3/4" x 2" A325 BOLTS

DOUBLE CP2X W/ 3/4" x 2" A325 BOLTS

PERIMETER  $\times$   
3x4x1/4"  $\times$  (TYP. U.N.)  
3x5x1/4"  $\times$  (@ E/W'S)

DECKING  
TFS3 26GA.



BAR JOIST = 16K2 @ 2'-0" O.C.  
W/ (2) ROWS BRIDGING (1x7/64  $\times$ )  
(TYPICAL U.N.)

② BAR JOIST = 14K1 @ 2'-0" O.C.  
W/ (1) ROW BRIDGING (1x7/64  $\times$ )

THE CLOSEST JOISTS TO COLUMNS  
NOTE: ARE TO BE BOLTED IN ADDITION TO  
WELDING. USE (2) 1/2" A325 BOLTS

MEZZ JOISTS ARE SHOWN  
NOTE: FOR ILLUSTRATION ONLY, NOT  
ACTUAL LOCATION!!!!

THE MEZANINE HAS BEEN DESIGNED  
FOR 51#/FT DEAD LOAD; 80#/FT  
LIVE LOAD. CONTACT RBS IMMEDIATELY  
IF THIS LOADING IS INADEQUATE FOR  
THE INTENDED USE OF THE STRUCTURE!!!!

JOB NAME: HAIR SALON SUPPLIES JOB LOCATION: SLIDELL, LA.	REV.	REVISION	DWN. CKD.	DATE
	0			
JOB: R-4462 SHEET: E7 OF 11	DRAWN:	CHECKED:	PERMIT/APP:	DATE
			MY	2/13/12
ERUCTION SHEET	SCALE:		NTS	
	RUFFIN BUILDING SYSTEMS Hwy. 2 West - Oak Grove, La. - (318)428-2305			

APPROVED

PROFESSIONAL ENGINEER