



Designation: **D 6433 – 9903**

Standard Practice for Roads and Parking Lots Pavement Condition Index Surveys¹

This standard is issued under the fixed designation D 6433; the number immediately following the designation indicates the year of original adoption or, in the case of revision, the year of last revision. A number in parentheses indicates the year of last reapproval. A superscript epsilon (ϵ) indicates an editorial change since the last revision or reapproval.

1. Scope

1.1 This practice covers the determination of roads and parking lots pavement condition through visual surveys using the Pavement Condition Index (PCI) method of quantifying pavement condition.

¹ This practice is under the jurisdiction of ASTM Committee D-04 on Road and Paving Materials and is the direct responsibility of Subcommittee D04.39 on Nondestructive Testing of Pavement Structures.

Current edition approved ~~June 10, 1999~~; Dec. 1, 2003. Published ~~September~~ January 2004. Originally approved in 1999. Last previous edition approved in 1999 as D 6433 – 99.

1.2 The PCI for roads and parking lots was developed by the U.S. Army Corps of Engineers (1, 2).² It is further verified and adopted by DOD and APWA.

1.3 The values stated in inch-pound units are to be regarded as the standard. The SI units given in parentheses are for information only.

1.4 *This standard does not purport to address all of the safety concerns, if any, associated with its use. It is the responsibility of the user of this standard to establish appropriate safety and health practices and determine the applicability of regulatory limitations prior to use.* Specific precautionary statements are given in Section 6.

2. Terminology

2.1 *Definitions of Terms Specific to This Standard:*

2.1.1 *additional sample*—a sample unit inspected in addition to the random sample units to include nonrepresentative sample units in the determination of the pavement condition. This includes very poor or excellent samples that are not typical of the section and sample units, which contain an unusual distress such as a utility cut. If a sample unit containing an unusual distress is chosen at random it should be counted as an additional sample unit and another random sample unit should be chosen. If every sample unit is surveyed, then there are no additional sample units.

2.1.2 *asphalt concrete (AC) surface*—aggregate mixture with an asphalt cement binder. This term also refers to surfaces constructed of coal tars and natural tars for purposes of this practice.

2.1.3 *pavement branch*—a branch is an identifiable part of the pavement network that is a single entity and has a distinct function. For example, each roadway or parking area is a separate branch.

2.1.4 *pavement condition index (PCI)*—a numerical rating of the pavement condition that ranges from 0 to 100 with 0 being the worst possible condition and 100 being the best possible condition.

2.1.5 *pavement condition rating*—a verbal description of pavement condition as a function of the PCI value that varies from “failed” to “excellent” as shown in Fig. 1.

2.1.6 *pavement distress*—external indicators of pavement deterioration caused by loading, environmental factors, construction deficiencies, or a combination thereof. Typical distresses are cracks, rutting, and weathering of the pavement surface. Distress types and severity levels detailed in Appendix X1 for AC, and Appendix X2 for PCC pavements must be used to obtain an accurate PCI value.

2.1.7 *pavement sample unit*—a subdivision of a pavement section that has a standard size range: 20 contiguous slabs (± 8 slabs if the total number of slabs in the section is not evenly divided by 20 or to accommodate specific field condition) for PCC

² The boldface numbers in parentheses refer to the list of references at the end of this standard.

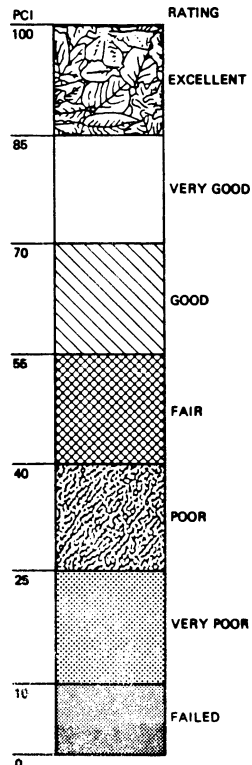


FIG. 1 Pavement Condition Index (PCI) and Rating Scale

pavement, and 2500 contiguous square feet, $\pm 1000 \text{ ft}^2$ ($225 \pm 90 \text{ m}^2$), if the pavement is not evenly divided by 2500 or to accommodate specific field condition, for AC pavement.

2.1.8 *pavement section*—a contiguous pavement area having uniform construction, maintenance, usage history, and condition. A section should have the same traffic volume and load intensity.

2.1.9 *portland cement concrete (PCC) pavement*— aggregate mixture with portland cement binder including nonreinforced and reinforced jointed pavement.

2.1.10 *random sample*—a sample unit of the pavement section selected for inspection by random sampling techniques, such as a random number table or systematic random procedure.

3. Summary of Practice

3.1 The pavement is divided into branches that are divided into sections. Each section is divided into sample units. The type and severity of pavement distress is assessed by visual inspection of the pavement sample units. The quantity of the distress is measured as described in Appendix X1 and Appendix X2. The distress data are used to calculate the PCI for each sample unit. The PCI of the pavement section is determined based on the PCI of the inspected sample units within the section.

4. Significance and Use

4.1 The PCI is a numerical indicator that rates the surface condition of the pavement. The PCI provides a measure of the present condition of the pavement based on the distress observed on the surface of the pavement, which also indicates the structural integrity and surface operational condition (localized roughness and safety). The PCI cannot measure structural capacity nor does it provide direct measurement of skid resistance or roughness. It provides an objective and rational basis for determining maintenance and repair needs and priorities. Continuous monitoring of the PCI is used to establish the rate of pavement deterioration, which permits early identification of major rehabilitation needs. The PCI provides feedback on pavement performance for validation or improvement of current pavement design and maintenance procedures.

5. Apparatus

5.1 *Data Sheets*, or other field recording instruments that record at a minimum the following information: date, location, branch, section, sample unit size, slab number and size, distress types, severity levels, quantities, and names of surveyors. Example data sheets for AC and PCC pavements are shown in Figs. 2 and 3.

5.2 *Hand Odometer Wheel*, that reads to the nearest 0.1 ft (30 mm).

5.3 *Straightedge or String Line*, (AC only), 10 ft (3 m).

5.4 *Scale*, 12 in. (300 mm) that reads to $\frac{1}{8}$ in. (3 mm) or better. Additional 12-in. (300 mm) ruler or straightedge is needed to measure faulting in PCC pavements.

5.5 *Layout Plan*, for network to be inspected.

6. Hazards

6.1 Traffic is a hazard as inspectors may walk on the pavement to perform the condition survey.

7. Sampling and Sample Units

7.1 Identify branches of the pavement with different uses such as roadways and parking on the network layout plan.

7.2 Divide each branch into sections based on the pavements design, construction history, traffic, and condition.

7.3 Divide the pavement sections into sample units. If the pavement slabs in PCC have joint spacing greater than 25 ft (8 m) subdivide each slab into imaginary slabs. The imaginary slabs all should be less than or equal to 25 ft (8 m) in length, and the imaginary joints dividing the slabs are assumed to be in perfect condition. This is needed because the deduct values developed for jointed concrete slabs are less than or equal to 25 ft (8 m).

7.4 Individual sample units to be inspected should be marked or identified in a manner to allow inspectors and quality control personnel to easily locate them on the pavement surface. Paint marks along the edge and sketches with locations connected to physical pavement features are acceptable. It is necessary to be able to accurately relocate the sample units to allow verification of current distress data, to examine changes in condition with time of a particular sample unit, and to enable future inspections of the same sample unit if desired.

7.5 Select the sample units to be inspected. The number of sample units to be inspected may vary from the following: all of the sample units in the section, a number of sample units that provides a 95 % confidence level, or a lesser number.

7.5.1 All sample units in the section may be inspected to determine the average PCI of the section. This is usually precluded for routine management purposes by available manpower, funds, and time. Total sampling, however, is desirable for project analysis to help estimate maintenance and repair quantities.

7.5.2 The minimum number of sample units (n) that must be surveyed within a given section to obtain a statistically adequate estimate (95 % confidence) of the PCI of the section is calculated using the following formula and rounding n to the next highest whole number (see Eq 1).

$$n = Ns^2/((e^2/4)(N - 1) + s^2) \quad (1)$$

CONCRETE SURFACED ROADS AND PARKING LOTS				
CONDITION SURVEY DATA SHEET FOR SAMPLE UNIT				
BRANCH _____		SECTION _____		SAMPLE UNIT _____
SURVEYED BY _____		DATE _____		SAMPLE AREA _____
<u>Distress Types</u>			SKETCH:	
21. Blow up/Buckling	31. Polished Aggregate	<div style="display: flex; justify-content: space-around;"> ••••• </div> <div style="display: flex; justify-content: space-around;"> ••••• </div> <div style="display: flex; justify-content: space-around;"> ••••• </div> <div style="display: flex; justify-content: space-around;"> ••••• </div> <div style="display: flex; justify-content: space-around;"> ••••• </div> <div style="display: flex; justify-content: space-around;"> ••••• </div> <div style="display: flex; justify-content: space-around;"> ••••• </div> <div style="display: flex; justify-content: space-around;"> ••••• </div> <div style="display: flex; justify-content: space-around;"> ••••• </div> <div style="display: flex; justify-content: space-around;"> ••••• </div>		

FIG. 3 Joint Rigid Pavement Condition Survey Data Sheet for Sample Unit

where:

e = acceptable error in estimating the section PCI; commonly, $e = \pm 5$ PCI points;

s = standard deviation of the PCI from one sample unit to another within the section. When performing the initial inspection the standard deviation is assumed to be ten for AC pavements and 15 for PCC pavements. This assumption should be checked as described below after PCI values are determined. For subsequent inspections, the standard deviation from the preceding inspection should be used to determine n ; and,

N = total number of sample units in the section.

7.5.2.1 If obtaining the 95 % confidence level is critical, the adequacy of the number of sample units surveyed must be confirmed. The number of sample units was estimated based on an assumed standard deviation. Calculate the actual standard deviation (s) as follows (see Eq 2):

$$s = \left(\sum_{i=1}^n (PCI_i - PCI_s)^2 / (n - 1) \right)^{1/2} \tag{2}$$

where:

PCI_i = PCI of surveyed sample units i ,

PCI_s = PCI of section (mean PCI of surveyed sample units), and

n = total number of sample units surveyed.

7.5.2.2 Calculate the revised minimum number of sample units (Eq 1) to be surveyed using the calculated standard deviation (Eq 2). If the revised number of sample units to be surveyed is greater than the number of sample units already surveyed, select and survey additional random sample units. These sample units should be spaced evenly across the section. Repeat the process of checking the revised number of sample units and surveying additional random sample units until the total number of sample units surveyed equals or exceeds the minimum required sample units (n) in Eq 1, using the actual total sample standard deviation.

7.5.3 Once the number of sample units to be inspected has been determined, compute the spacing interval of the units using systematic random sampling. Samples are spaced equally throughout the section with the first sample selected at random. The spacing interval (i) of the units to be sampled is calculated by the following formula rounded to the next lowest whole number:

$$i = N/n \quad (3)$$

where:

N = total number of sample units in the section, and

n = number of sample units to be inspected.

The first sample unit to be inspected is selected at random from sample units 1 through i . The sample units within a section that are successive increments of the interval i after the first randomly selected unit also are inspected.

7.6 A lesser sampling rate than the above mentioned 95 % confidence level can be used based on the condition survey objective. As an example, one agency uses the following table for selecting the number of sample units to be inspected for other than project analysis:

Given	Survey
1 to 5 sample units	1 sample unit
6 to 10 sample units	2 sample units
11 to 15 sample units	3 sample units
16 to 40 sample units	4 sample units
over 40 sample units	10 %

7.7 Additional sample units only are to be inspected when nonrepresentative distresses are observed as defined in 2.1.1. These sample units are selected by the user.

8. Inspection Procedure

8.1 The definitions and guidelines for quantifying distresses for PCI determination are given in Appendix X1 for AC pavements. Using this test method, inspectors should identify distress types accurately 95 % of the time. Linear measurements should be considered accurate when they are within 10 % if remeasured, and area measurements should be considered accurate when they are within 20 % if remeasured. Distress severities that one determines based on ride quality are considered subjective.

8.2 *Asphalt Concrete (AC) Surfaced Pavement*—Individually inspect each sample unit chosen. Sketch the sample unit, including orientation. Record the branch and section number and the number and type of the sample unit (random or additional). Record the sample unit size measured with the hand odometer. Conduct the distress inspection by walking over the sidewalk/shoulder of the sample unit being surveyed, measuring the quantity of each severity level of every distress type present, and recording the data. Each distress must correspond in type and severity to that described in Appendix X1. The method of measurement is included with each distress description. Repeat this procedure for each sample unit to be inspected. A copy of a Blank Flexible Pavement Condition Survey Data Sheet for Sample Unit is included in Fig. 2.

8.3 *PCC Pavements*—Individually inspect each sample unit chosen. Sketch the sample unit showing the location of the slabs. Record the sample unit size, branch and section number, and number and type of the sample unit (random or additional), the number of slabs in the sample unit and the slab size measured with the hand odometer. Perform the inspection by walking over the sidewalk/shoulder of the sample unit being surveyed and recording all distress existing in the slab along with their severity level. Each distress type and severity must correspond with that described in Appendix X2. Summarize the distress types, their severity levels and the number of slabs in the sample unit containing each type and severity level. Repeat this procedure for each sample unit to be inspected. A copy of a Blank Jointed Rigid Pavement Condition Survey Data Sheet for Sample Unit is included in Fig. 3.

9. Calculation of PCI for Asphalt Concrete (AC) Pavement

9.1 Add up the total quantity of each distress type at each severity level, and record them in the “Total Severities” section. For example, Fig. 4 shows five entries for the Distress Type 1, “Alligator Cracking”: 5L, 4L, 4L, 8H, and 6H. The distress at each severity level is summed and entered in the “Total Severity” section as 13 ft² (1.2 m²) of low severity and 14 ft² (1.3 m²) of medium severity. The units for the quantities may be either in square feet (square meters), linear feet (meters), or number of occurrences, depending on the distress type.

9.2 Divide the total quantity of each distress type at each severity level from 9.1 by the total area of the sample unit and multiply by 100 to obtain the percent density of each distress type and severity.

9.3 Determine the deduct value (DV) for each distress type and severity level combination from the distress deduct value curves in Appendix X3.

9.4 Determine the maximum corrected deduct value (CDV). The procedure for determining maximum CDV from individual

DVs is identical for both AC and PCC pavement types.

9.5 The following procedure must be used to determine the maximum CDV.

9.5.1 If none or only one individual deduct value is greater than two, the total value is used in place of the maximum CDV in determining the PCI; otherwise, maximum CDV must be determined using the procedure described in 9.5.2-9.5.5.

9.5.2 List the individual deduct values in descending order. For example, in Fig. 4 this will be 25.1, 23.4, 17.9, 11.2, 7.9, 7.5, 6.9, and 5.3.

9.5.3 Determine the allowable number of deducts, m , from Fig. 5, or using the following formula (see Eq 4):

$$m = 1 + (9/98)(100 - HDV) \leq 10 \tag{4}$$

where:

m = allowable number of deducts including fractions (must be less than or equal to ten), and
 HDV = highest individual deduct value.

(For the example in Fig. 4, $m = 1 + (9/98)(100 - 25.1) = 7.9$).

9.5.4 The number of individual deduct values is reduced to the m largest deduct values, including the fractional part. For the example in Fig. 6, the values are 25.1, 23.4, 17.9, 11.2, 7.9, 7.5, 6.9, and 4.8 (the 4.8 is obtained by multiplying 5.3 by $(7.9 - 7 = 0.9)$). If less than m deduct values are available, all of the deduct values are used.

9.5.5 Determine maximum CDV iteratively, as shown in Fig. 6.

9.5.5.1 Determine total deduct value by summing individual deduct values. The total deduct value is obtained by adding the individual deduct values in 9.5.4, that is, 104.7.

9.5.5.2 Determine q as the number of deducts with a value greater than 2.0. For example, in Fig. 6, $q = 8$.

9.5.5.3 Determine the CDV from total deduct value and q by looking up the appropriate correction curve for AC pavements in Fig. X4.15 in Appendix X3.

9.5.5.4 Reduce the smallest individual deduct value greater than 2.0 to 2.0 and repeat 9.5.5.1-9.5.5.3 until $q = 1$.

9.5.5.5 Maximum CDV is the largest of the CDVs.

9.6 Calculate PCI by subtracting the maximum CDV from 100: $PCI = 100 - \text{max CDV}$.

9.7 Fig. 6 shows a summary of PCI calculation for the example AC pavement data in Fig. 4. A blank PCI calculation form is included in Fig. 2.

Adjustment of Number of Deduct Values

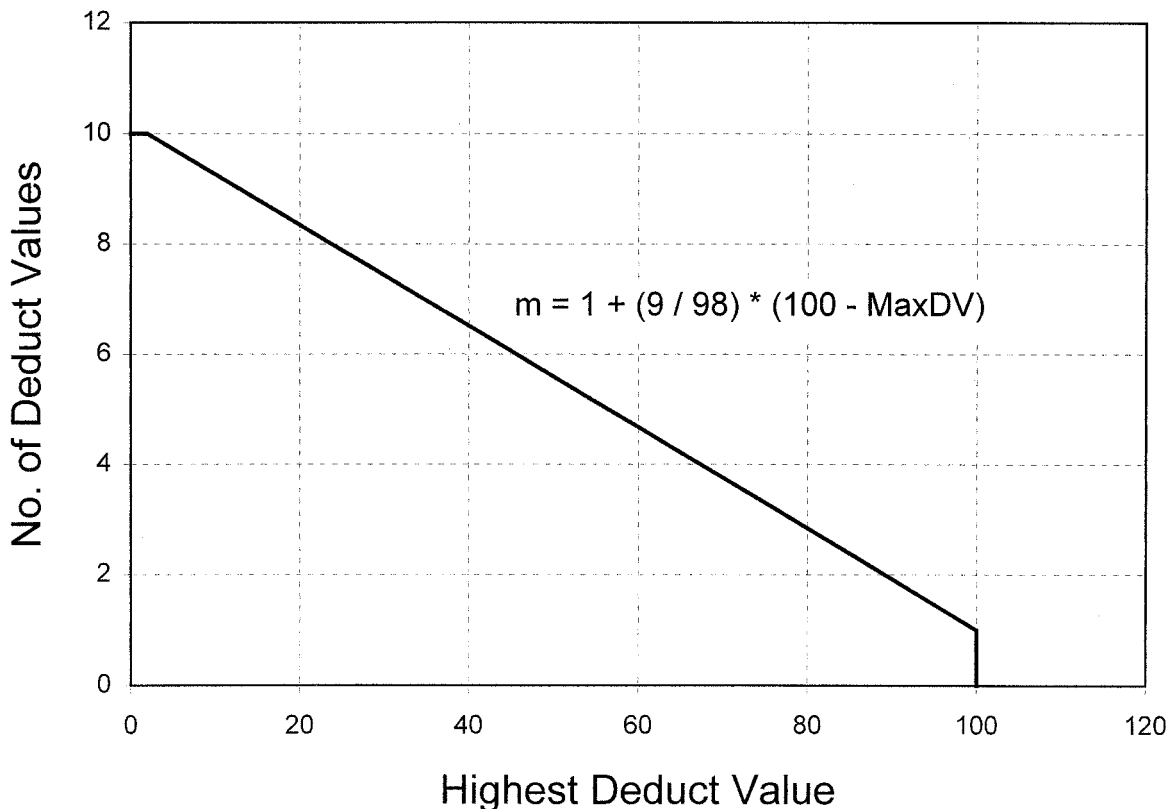


FIG. 5 Adjustment of Number of Deduct Values

$m = 1 + (9/98)(100 - 25.1) = 7.9 < 8$
 Use highest 7 deducts and 0.9 of eighth deduct.
 $0.9 \times 5.3 = 4.8$

#	Deduct Values									Total	q	CDV
1	25.1	23.4	17.9	11.2	7.9	7.5	6.9	4.8		104.7	8	51.0
2	25.1	23.4	17.9	11.2	7.9	7.5	6.9	2		101.9	7	50.0
3	25.1	23.4	17.9	11.2	7.9	7.5	2	2		96.0	6	46.0
4	25.1	23.4	17.9	11.2	7.9	2	2	2		90.5	5	47.0
5	25.1	23.4	17.9	11.2	2	2	2	2		84.6	4	48.0
6	25.1	23.4	17.9	2	2	2	2	2		75.4	3	48.0
7	25.1	23.4	2	2	2	2	2	2		59.5	2	44.0
8	25.1	2	2	2	2	2	2	2		38.1	1	38.0
9												
10												

Max CDV = 51
 PCI = 100 - Max CDV = 49
 Rating = FAIR

FIG. 6 Calculation of Corrected PCI Value—Flexible Pavement

10. Calculation of PCI for Portland Cement Concrete (PCC) Pavement

10.1 For each unique combination of distress type and severity level, add up the total number of slabs in which they occur. For the example in Fig. 7, there are two slabs containing low-severity corner break (Distress 22L).

10.2 Divide the number of slabs from 10.1 by the total number of slabs in the sample unit and multiply by 100 to obtain the percent density of each distress type and severity combination.

10.3 Determine the deduct values for each distress type severity level combination using the corresponding deduct curve in Appendix X4.

10.4 Determine PCI by following the procedures in 9.5 and 9.6, using the correction curve for PCC pavements (see Fig. X4.20 in Appendix X4) in place of the correction curve for AC pavements.

10.5 Fig. 7 shows a summary of PCI calculation for the example PCC pavement distress data in Fig. 8.

11. Determination of Section PCI

11.1 If all surveyed sample units are selected randomly or if every sample unit is surveyed randomly, then the PCI of the section (PCI_s) is calculated as the average area weighted PCI of the PCIs of the sample units. If additional sample units, as defined in 2.1.1, are randomly surveyed then a weighted average is used as follows: sample units (PCI_r) using equation 5:

$$PCI_s = (N-A)(PCI_r)/N + A(PCI_A)/N \tag{5}$$

$m = 1 + (9/98)(100 - 30.5) = 7.4 < 8$
 Use highest 7 deducts and 0.4 of eighth deduct.
 $0.4 \times 4.4 = 1.76$

#	Deduct Values									Total	q	CDV
	30.5	25.1	12.6	9.0	8.0	7.7	5.8	1.76				
1	30.5	25.1	12.6	9.0	8.0	7.7	5.8	1.76		100.5	7	50.0
2	30.5	25.1	12.6	9.0	8.0	7.7	2	1.76		96.7	6	49.5
3	30.5	25.1	12.6	9.0	8.0	2	2	1.76		91.0	5	51.0
4	30.5	25.1	12.6	9.0	2	2	2	1.76		85.0	4	49.0
5	30.5	25.1	12.6	2	2	2	2	1.76		78.0	3	50.0
6	30.5	25.1	2	2	2	2	2	1.76		67.4	2	50.0
7	30.5	2	2	2	2	2	2	1.76		44.3	1	44.3
8												
9												
10												

Max CDV = 51
 PCI = 100 - Max CDV = 49
 Rating = FAIR

FIG. 8 Calculation of Corrected PCI Value—Jointed Rigid Pavement

$$\overline{PCI}_a = \frac{\sum_{i=1}^m (PCI_{ai} \cdot A_{ai})}{\sum_{i=1}^m A_{ai}} \quad (6)$$

$$PCI_s = \frac{\overline{PCI}_a(A - \sum_{i=1}^m A_{ai}) + \overline{PCI}_a(\sum_{i=1}^m A_{ai})}{A} \quad (7)$$

- \overline{PCI}_a = area weighted PCI of additional sample units,
- \overline{NP} = total number PCI of additional sample units in the section, unit i ,
- \overline{CI}_{ai}
- A_{ai} = area of additional sample unit i ,
- A = number/area of additional sample units,
- $PCI_{\overline{R}}$
- sec-
- tion,

m = mean PCI number of randomly selected additional sample units surveyed, and PCI
 $\frac{PCI}{A_s}$ = mean area weighted PCI of additional selected sample units; the pavement section.

11.2 Determine the overall condition rating of the section by using the section PCI and the condition rating scale in Fig. 1.

12. Report

12.1 Develop a summary report for each section. The summary lists section location, size, total number of sample units, the sample units inspected, the PCIs obtained, the average PCI for the section, and the section condition rating.

APPENDIXES

(Nonmandatory Information)

X1. Distress in Asphalt Pavements

X1.1 During the field condition surveys and validation of the PCI, several questions are commonly asked about the identification and measurement of some of the distresses. The answers to these questions for each distress are included under the heading “How to Measure.” For convenience, however, the most frequently raised issues are addressed below:

X1.1.1 If alligator cracking and rutting occur in the same area, each is recorded separately at its respective severity level.

X1.1.2 If bleeding is counted, polished aggregate is not counted in the same area.

X1.1.3 Spalling as used herein is the further breaking of pavement or loss of materials around cracks or joints.

X1.1.4 If a crack does not have the same severity level along its entire length, each portion of the crack having a different severity level should be recorded separately. If, however, the different levels of severity in a portion of a crack cannot be easily divided, that portion should be rated at the highest severity level present.

X1.1.5 If any distress, including cracking and potholes, is found in a patched area, it is not recorded; its effect on the patch, however, is considered in determining the severity level of the patch.

X1.1.6 A significant amount of polished aggregate should be present before it is counted.

X1.1.7 A distress is said to be raveled if the area surrounding the distress is broken (sometimes to the extent that pieces are removed).

X1.2 The reader should note that the items above are general issues and do not stand alone as inspection criteria. To properly measure each distress type, the inspector must be familiar with its individual measurement criteria.

X1.3 Nineteen distress types for asphalt-surfaced pavements are listed alphabetically in this manual.

RIDE QUALITY

X1.4 Ride quality must be evaluated in order to establish a severity level for the following distress types:

X1.4.1 Bumps.

X1.4.2 Corrugation.

X1.4.3 Railroad crossings.

X1.4.4 Shoving.

X1.4.5 Swells.

X1.4.6 To determine the effect these distresses have on ride quality, the inspector should drive at the normal operating speed and use the following severity-level definitions of ride quality:

X1.4.6.1 **L**—Low. Vehicle vibrations, for example, from corrugation, are noticeable, but no reduction in speed is necessary for comfort or safety. Individual bumps or settlements, or both, cause the vehicle to bounce slightly, but create little discomfort.

X1.4.6.2 **M**—Medium. Vehicle vibrations are significant and some reduction in speed is necessary for safety and comfort. Individual bumps or settlements, or both, cause the vehicle to bounce significantly, creating some discomfort.

X1.4.6.3 **H**—High. Vehicle vibrations are so excessive that speed must be reduced considerably for safety and comfort. Individual bumps or settlements, or both, cause the vehicle to bounce excessively, creating substantial discomfort, safety hazard, or high potential vehicle damage.

X1.4.7 The inspector should drive at the posted speed in a sedan that is representative of cars typically seen in local traffic. Pavement sections near stop signs should be rated at a deceleration speed appropriate for the intersection.

ALLIGATOR CRACKING (FATIGUE)

X1.5 *Description* —Alligator or fatigue cracking is a series of interconnecting cracks caused by fatigue failure of the asphalt concrete surface under repeated traffic loading. Cracking begins at the bottom of the asphalt surface, or stabilized base, where

tensile stress and strain are highest under a wheel load. The cracks propagate to the surface initially as a series of parallel longitudinal cracks. After repeated traffic loading, the cracks connect, forming many sided, sharp-angled pieces that develop a pattern resembling chicken wire or the skin of an alligator. The pieces are generally less than 0.5 m (1.5 ft) on the longest side. Alligator cracking occurs only in areas subjected to repeated traffic loading, such as wheel paths. Pattern-type cracking that occurs over an entire area not subjected to loading is called “block cracking,” which is not a load-associated distress.

X1.5.1 Severity Levels:

X1.5.1.1 L—Fine, longitudinal hairline cracks running parallel to each other with no, or only a few interconnecting cracks. The cracks are not spalled (Fig. X1.1).

X1.5.1.2 M—Further development of light alligator cracks into a pattern or network of cracks that may be lightly spalled (Fig. X1.2).

X1.5.1.3 H—Network or pattern cracking has progressed so that the pieces are well defined and spalled at the edges. Some of the pieces may rock under traffic (Fig. X1.3).

X1.5.2 How to Measure— Alligator cracking is measured in square meters (square feet) of surface area. The major difficulty in measuring this type of distress is that two or three levels of severity often exist within one distressed area. If these portions can be easily distinguished from each other, they should be measured and recorded separately; however, if the different levels of severity cannot be divided easily, the entire area should be rated at the highest severity present. If alligator cracking and rutting occur in the same area, each is recorded separately as its respective severity level.

BLEEDING

X1.6 Description —Bleeding is a film of bituminous material on the pavement surface that creates a shiny, glasslike, reflecting surface that usually becomes quite sticky. Bleeding is caused by excessive amounts of asphaltic cement or tars in the mix, excess application of a bituminous sealant, or low air void content, or a combination thereof. It occurs when asphalt fills the voids of the mix during hot weather and then expands onto the pavement surface. Since the bleeding process is not reversible during cold weather, asphalt or tar will accumulate on the surface.

X1.6.1 Severity Levels:

X1.6.1.1 L—Bleeding only has occurred to a very slight degree and is noticeable only during a few days of the year. Asphalt does not stick to shoes or vehicles (Fig. X1.4).

X1.6.1.2 M—Bleeding has occurred to the extent that asphalt sticks to shoes and vehicles during only a few weeks of the year (Fig. X1.5).

X1.6.1.3 H—Bleeding has occurred extensively and considerable asphalt sticks to shoes and vehicles during at least several weeks of the year (Fig. X1.6).

X1.6.2 How to Measure— Bleeding is measured in square meters (square feet) of surface area. If bleeding is counted, polished aggregate should not be counted.

BLOCK CRACKING

X1.7 Description —Block cracks are interconnected cracks that divide the pavement into approximately rectangular pieces. The blocks may range in size from approximately 0.3 by 0.3 m (1 by 1 ft) to 3 by 3 m (10 by 10 ft). Block cracking is caused mainly by shrinkage of the asphalt concrete and daily temperature cycling, which results in daily stress/strain cycling. It is not load-associated. Block cracking usually indicates that the asphalt has hardened significantly. Block cracking normally occurs over a large portion of the pavement area, but sometimes will occur only in nontraffic areas. This type of distress differs from alligator



FIG. X1.1 Low-Severity Alligator Cracking



FIG. X1.2 Medium-Severity Alligator Cracking



FIG. X1.3 High-Severity Alligator Cracking



FIG. X1.4 Low-Severity Bleeding

cracking in that alligator cracks form smaller, many-sided pieces with sharp angles. Also, unlike block, alligator cracks are caused by repeated traffic loadings, and therefore, are found only in traffic areas, that is, wheel paths.

X1.7.1 Severity Levels:

X1.7.1.1 **L**—Blocks are defined by low-severity³ cracks (Fig. X1.7).

³ See definitions of longitudinal transverse cracking within Appendix X2.10.



FIG. X1.5 Medium-Severity Bleeding



FIG. X1.6 High-Severity Bleeding

X1.7.1.2 **M**—Blocks are defined by medium-severity³ cracks (Fig. X1.8).

X1.7.1.3 **H**—Blocks are defined by high-severity³ cracks (Fig. X1.9).

X1.7.2 *How to Measure*— Block cracking is measured in m² (ft²) of surface area. It usually occurs at one severity level in a given pavement section; however, if areas of different severity levels can be distinguished easily from one another, they should be measured and recorded separately.

BUMPS AND SAGS

X1.8 *Description* :

X1.8.1 Bumps are small, localized, upward displacements of the pavement surface. They are different from shoves in that shoves are caused by unstable pavement. Bumps, on the other hand, can be caused by several factors, including:

X1.8.1.1 Buckling or bulging of underlying PCC slabs in AC overlay over PCC pavement.

X1.8.1.2 Frost heave (ice, lens growth).

X1.8.1.3 Infiltration and buildup of material in a crack in combination with traffic loading (sometimes called “tenting”).

X1.8.1.4 Sags are small, abrupt, downward displacements of the pavement surface. If bumps appear in a pattern perpendicular to traffic flow and are spaced at less than 3 m (10 ft), the distress is called corrugation. Distortion and displacement that occur over large areas of the pavement surface, causing large or long dips, or both, in the pavement should be recorded as “swelling.”

X1.8.2 *Severity Levels*:

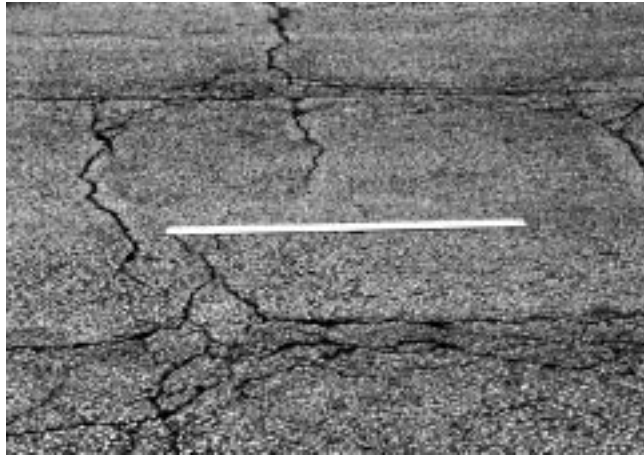


FIG. X1.7 Low-Severity Block Cracking



FIG. X1.8 Medium-Severity Block Cracking



FIG. X1.9 High-Severity Block Cracking

X1.8.2.1 **L**—Bump or sag causes low-severity ride quality (Fig. X1.10).

X1.8.2.2 **M**—Bump or sag causes medium-severity ride quality (Fig. X1.11).

X1.8.2.3 **H**—Bump or sag causes high-severity ride quality (Fig. X1.12).

X1.8.3 *How to Measure*—Bumps or sags are measured in linear meters (feet). If the bump occurs in combination with a crack, the crack also is recorded.

CORRUGATION

X1.9 *Description* —Corrugation, also known as “washboarding”, is a series of closely spaced ridges and valleys (ripples)

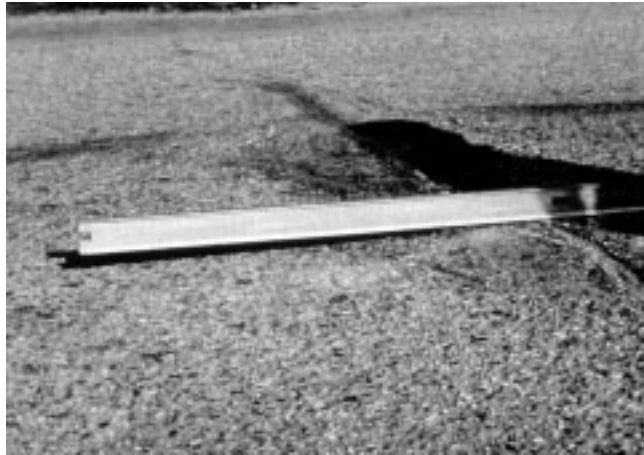


FIG. X1.10 Low-Severity Bumps and Sags



FIG. X1.11 Medium-Severity Bumps and Sags

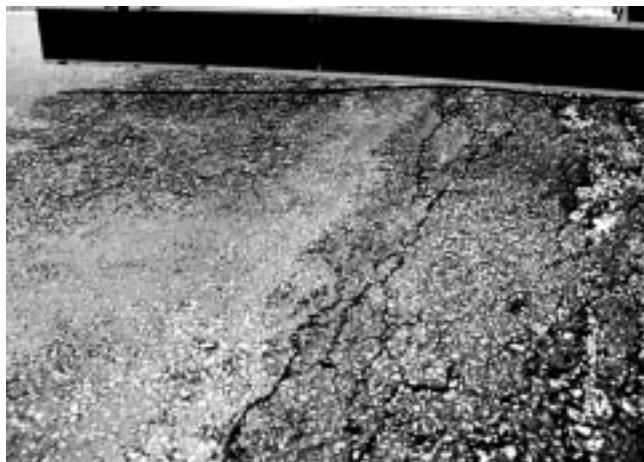


FIG. X1.12 High-Severity Bumps and Sags

occurring at fairly regular intervals, usually less than 3 m (10 ft) along the pavement. The ridges are perpendicular to the traffic direction. This type of distress usually is caused by traffic action combined with an unstable pavement surface or base.

X1.9.1 *Severity Levels:*

X1.9.1.1 **L**—Corrugation produces low-severity ride quality (Fig. X1.13).

X1.9.1.2 **M**—Corrugation produces medium-severity ride quality (Fig. X1.14).

X1.9.1.3 **H**—Corrugation produces high-severity ride quality (Fig. X1.15).

X1.9.2 *How to Measure*— Corrugation is measured in square meters (square feet) of surface area.



FIG. X1.13 Low-Severity Corrugation



FIG. X1.14 Medium-Severity Corrugation



FIG. X1.15 High-Severity Corrugation

DEPRESSION

X1.10 *Description* —Depressions are localized pavement surface areas with elevations slightly lower than those of the surrounding pavement. In many instances, light depressions are not noticeable until after a rain, when ponding water creates a “birdbath” area; on dry pavement, depressions can be spotted by looking for stains caused by ponding water. Depressions are created by settlement of the foundation soil or are a result of improper construction. Depressions cause some roughness, and when deep enough or filled with water, can cause hydroplaning.

X1.10.1 Severity Levels (Maximum Depth of Depression):

X1.10.1.1 **L**—13 to 25 mm (½ to 1 in.) (Fig. X1.16).

X1.10.1.2 **M**—25 to 50 mm (1 to 2 in.) (Fig. X1.17).

X1.10.1.3 **H**—More than 50 mm (2 in.) (Fig. X1.18).

X1.10.2 *How to Measure*— Depressions are measured in square meters (square feet) of surface area.

EDGE CRACKING

X1.11 *Description* —Edge cracks are parallel to and usually within 0.3 to 0.5 m (1 to 1.5 ft) of the outer edge of the pavement. This distress is accelerated by traffic loading and can be caused by frost-weakened base or subgrade near the edge of the pavement. The area between the crack and pavement edge is classified as raveled if it is broken up (sometimes to the extent that pieces are removed).

X1.11.1 Severity Levels:

X1.11.1.1 **L**—Low or medium cracking with no breakup or raveling (Fig. X1.19).

X1.11.1.2 **M**—Medium cracks with some breakup and raveling (Fig. X1.20).

X1.11.1.3 **H**—Considerable breakup or raveling along the edge (Fig. X1.21).

X1.11.2 *How to Measure*— Edge cracking is measure in linear meters (feet).

**JOINT REFLECTION CRACKING
(From Longitudinal and Transverse PCC Slabs)**

X1.12 *Description* —This distress occurs only on asphalt-surfaced pavements that have been laid over a PCC slab. It does not include reflection cracks from any other type of base, that is, cement- or lime-stabilized; these cracks are caused mainly by thermal- or moisture-induced movement of the PCC slab beneath the AC surface. This distress is not load-related; however, traffic loading may cause a breakdown of the AC surface near the crack. If the pavement is fragmented along a crack, the crack is said to be spalled. A knowledge of slab dimension beneath the AC surface will help to identify these distresses.

X1.12.1 Severity Levels:

X1.12.1.1 **L**—One of the following conditions exists (Fig. X1.22): Nonfilled crack width is less than 10 mm (¾ in.), or filled crack of any width (filler in satisfactory condition).

X1.12.1.2 **M**—One of the following conditions exists (Fig. X1.23): Nonfilled crack width is greater than or equal to 10 mm (¾ in.) and less than 75 mm (3 in.); nonfilled crack less than or equal to 75 mm (3 in.) surrounded by light secondary cracking; or, filled crack of any width surrounded by light secondary cracking.

X1.12.1.3 **H**—One of the following conditions exists (Fig. X1.24): Any crack filled or nonfilled surrounded by medium- or high-severity secondary cracking; nonfilled cracks greater than 75 mm (3 in.); or, a crack of any width where approximately 100 mm (4 in.) of pavement around the crack are severely raveled or broken.

X1.12.2 *How to Measure*— Joint reflection cracking is measured in linear meters (feet). The length and severity level of each crack should be identified and recorded separately. For example, a crack that is 15 m (50 ft) long may have 3 m (10 ft) of high severity cracks, which are all recorded separately. If a bump occurs at the reflection crack, it is recorded also.

LANE/SHOULDER DROP-OFF

X1.13 *Description* —Lane/shoulder drop-off is a difference in elevation between the pavement edge and the shoulder. This distress is caused by shoulder erosion, shoulder settlement, or by building up the roadway without adjusting the shoulder level.



FIG. X1.16 Low-Severity Depression

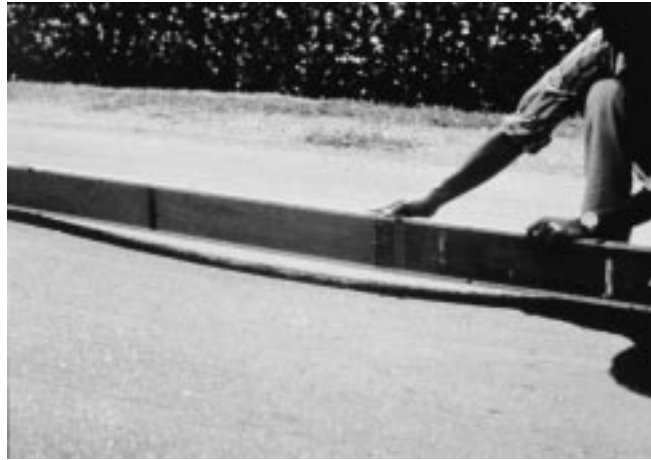


FIG. X1.17 Medium-Severity Depression

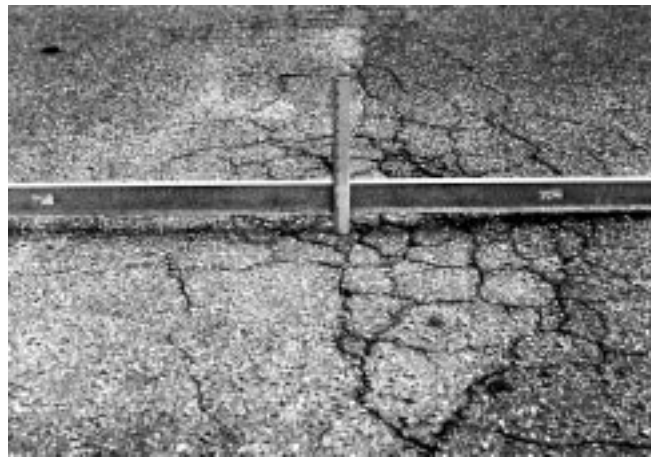


FIG. X1.18 High-Severity Depression



FIG. X1.19 Low-Severity Edge Cracking

X1.13.1 *Severity Levels:*

X1.13.1.1 **L**—The difference in elevation between the pavement edge and shoulder is > 25 mm (1 in.) and < 50 mm (2 in.) (Fig. X1.25).

X1.13.1.2 **M**—The difference in elevation is > 50 mm (2 in.) and < 100 mm (4 in.) (Fig. X1.26).

X1.13.1.3 **H**—The difference in elevation is > 100 mm (4 in.) (Fig. X1.27).

X1.13.2 *How to Measure*— Lane/shoulder drop-off is measured in linear meters (feet).



FIG. X1.20 Medium-Severity Edge Cracking



FIG. X1.21 High-Severity Edge Cracking



FIG. X1.22 Low-Severity Joint Reflection Cracking

**LONGITUDINAL AND TRANSVERSE CRACKING
(Non-PCC Slab Joint Reflective)**

X1.14 *Description :*

X1.14.1 Longitudinal cracks are parallel to the pavement's centerline or laydown direction. They may be caused by:

X1.14.1.1 A poorly constructed paving lane joint.

X1.14.1.2 Shrinkage of the AC surface due to low temperatures or hardening of the asphalt, or daily temperature cycling, or both.



FIG. X1.23 Medium-Severity Joint Reflection Cracking

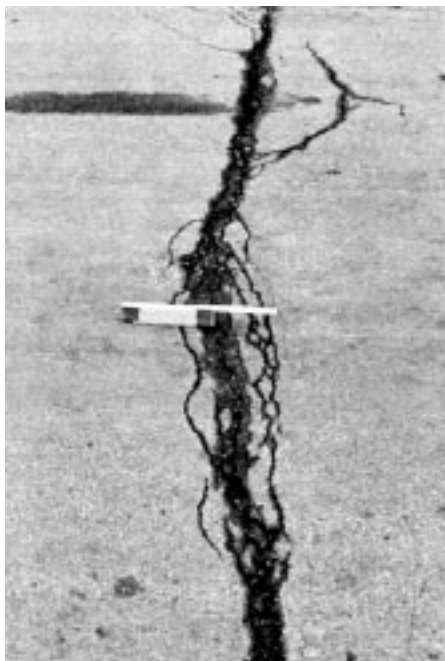


FIG. X1.24 High-Severity Joint Reflection Cracking

X1.14.1.3 A reflective crack caused by cracking beneath the surface course, including cracks in PCC slabs, but not PCC joints.

X1.14.1.4 Transverse cracks extend across the pavement at approximately right angles to the pavement centerline or direction of laydown. These types of cracks are not usually load-associated.

X1.14.2 *Severity Levels:*

X1.14.2.1 **L**—One of the following conditions exists (Fig. X1.28): nonfilled crack width is less than 10 mm ($\frac{3}{8}$ in.), or filled crack of any width (filler in satisfactory condition).

X1.14.2.2 **M**—One of the following conditions exists (Fig. X1.29): nonfilled crack width is greater than or equal to 10 mm and less than 75 mm ($\frac{3}{8}$ to 3 in.); nonfilled crack is less than or equal to 75 mm (3 in.) surrounded by light and random cracking; or, filled crack is of any width surrounded by light random cracking.

X1.14.2.3 **H**—One of the following conditions exists (Fig. X1.30): any crack filled or nonfilled surrounded by medium- or high-severity random cracking; nonfilled crack greater than 75 mm (3 in.); or, a crack of any width where approximately 100 mm



FIG. X1.25 Low-Severity Lane/Shoulder Drop-Off



FIG. X1.26 Medium-Severity Lane/Shoulder Drop-Off



FIG. X1.27 High-Severity Lane/Shoulder Drop-Off

(4 in.) of pavement around the crack is severely broken.

X1.14.3 *How to Measure*— Longitudinal and transverse cracks are measured in linear meters (feet). The length and severity of each crack should be recorded. If the crack does not have the same severity level along its entire length, each portion of the crack having a different severity level should be recorded separately.

PATCHING AND UTILITY CUT PATCHING

X1.15 *Description* —A patch is an area of pavement that has been replaced with new material to repair the existing pavement.



FIG. X1.28 Low-Severity Longitudinal and Transverse Cracking



FIG. X1.29 Medium-Severity Longitudinal and Transverse Cracking



FIG. X1.30 High-Severity Longitudinal and Transverse Cracking

A patch is considered a defect no matter how well it is performing (a patched area or adjacent area usually does not perform as well as an original pavement section). Generally, some roughness is associated with this distress.

X1.15.1 Severity Levels:

X1.15.1.1 **L**—Patch is in good condition and satisfactory. Ride quality is rated as low severity or better (Fig. X1.31).

X1.15.1.2 **M**—Patch is moderately deteriorated, or ride quality is rated as medium severity, or both (Fig. X1.32).

X1.15.1.3 **H**—Patch is badly deteriorated, or ride quality is rated as high severity, or both; needs replacement soon (Fig. X1.33).



FIG. X1.31 Low-Severity Patching and Utility Cut Patching



FIG. X1.32 Medium-Severity Patching and Utility Cut Patching



FIG. X1.33 High-Severity Patching and Utility Cut Patching

X1.15.2 *How to Measure*— Patching is rated in ft² of surface area; however, if a single patch has areas of differing severity, these areas should be measured and recorded separately. For example, a 2.5 m² (27.0 ft²) patch may have 1 m² (11 ft²) of medium severity and 1.5 m² (16 ft²) of low severity. These areas would be recorded separately. Any distress found in a patched area will not be recorded; however, its effect on the patch will be considered when determining the patch's severity level. No other distresses, for example, are recorded within a patch. Even if the patch material is shoving or cracking, the area is rated only as a patch. If a large amount of pavement has been replaced, it should not be recorded as a patch but considered as new pavement, for example, replacement of a complete intersection.

POLISHED AGGREGATE

X1.16 *Description* —This distress is caused by repeated traffic applications. Polished aggregate is present when close examination of a pavement reveals that the portion of aggregate extending above the asphalt is either very small, or there are no rough or angular aggregate particles to provide good skid resistance. When the aggregate in the surface becomes smooth to the touch, adhesion with vehicle tires is considerably reduced. When the portion of aggregate extending above the surface is small, the pavement texture does not significantly contribute to reducing vehicle speed. Polished aggregate should be counted when close examination reveals that the aggregate extending above the asphalt is negligible, and the surface aggregate is smooth to the touch. This type of distress is indicated when the number on a skid resistance test is low or has dropped significantly from a previous rating.

X1.16.1 *Severity Levels*— No degrees of severity are defined; however, the degree of polishing should be clearly evident in the sample unit in that the aggregate surface should be smooth to the touch (Fig. X1.34).

X1.16.2 *How to Measure*— Polished aggregate is measured in square meters (square feet) of surface area. If bleeding is counted, polished aggregate should not be counted.

POTHOLES

X1.17 *Description* —Potholes are small—usually less than 750 mm (30 in.) in diameter—bowl-shaped depressions in the pavement surface. They generally have sharp edges and vertical sides near the top of the hole. When holes are created by high-severity alligator cracking, they should be identified as potholes, not as weathering.

X1.17.1 *Severity Levels:*

X1.17.1.1 The levels of severity for potholes less than 750 mm (30 in.) in diameter are based on both the diameter and the depth of the pothole, according to Table X1.1.

X1.17.1.2 If the pothole is more than 750 mm (30 in.) in diameter, the area should be determined in square feet and divided by 0.5 m² (5.5 ft²) find the equivalent number of holes. If the depth is 25 mm (1 in.) or less, the holes are considered medium-severity. If the depth is more than 25 mm (1 in.), they are considered high-severity (Figs. X1.35-X1.37).

X1.17.2 *How to Measure*— Potholes are measured by counting the number that are low-, medium-, and high-severity and recording them separately.

RAILROAD CROSSING

X1.18 *Description* —Railroad crossing defects are depressions or bumps around, or between tracks, or both.

X1.18.1 *Severity Levels:*

X1.18.1.1 **L**—Railroad crossing causes low-severity ride quality (Fig. X1.38).

X1.18.1.2 **M**—Railroad crossing causes medium-severity ride quality (Fig. X1.39).

X1.18.1.3 **H**—Railroad crossing causes high-severity ride quality (Fig. X1.40).

X1.18.2 *How to Measure*— The area of the crossing is measured in square meters (square feet) of surface area. If the crossing does not affect ride quality, it should not be counted. Any large bump created by the tracks should be counted as part of the crossing.

RUTTING

X1.19 *Description* —A rut is a surface depression in the wheel paths. Pavement uplift may occur along the sides of the rut, but, in many instances, ruts are noticeable only after a rainfall when the paths are filled with water. Rutting stems from a permanent

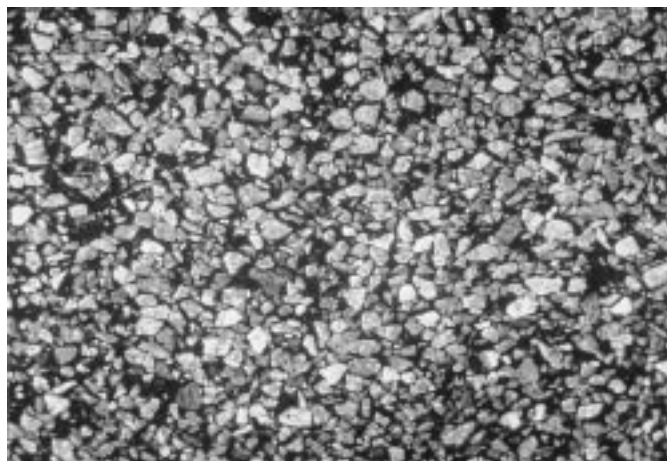


FIG. X1.34 Polished Aggregate

TABLE X1.1 Levels of Severity for Potholes

Maximum Depth of Pothole	Average Diameter (mm) (in.)		
	100 to 200 mm (4 to 8 in.)	200 to 450 mm (8 to 18 in.)	450 to 750 mm (18 to 30 in.)
13 to ≤25 mm (½ to 1 in.)	L	L	M
>25 and ≤50 mm (1 to 2 in.)	L	M	H
>50 mm (2 in.)	M	M	H



FIG. X1.35 Low-Severity Pothole



FIG. X1.36 Medium-Severity Pothole

deformation in any of the pavement layers or subgrades, usually caused by consolidated or lateral movement of the materials due to traffic load.

X1.19.1 Severity Levels (Mean Rut Depth):

X1.19.1.1 **L**—6 to 13 mm (¼ to ½ in.) (Fig. X1.41).

X1.19.1.2 **M**—>13 to 25 mm (>½ to 1 in.) (Fig. X1.42).

X1.19.1.3 **H**—>25 mm (>1 in.) (Fig. X1.43).

X1.19.2 *How to Measure*— Rutting is measured in square meters (square feet) of surface area, and its severity is determined by the mean depth of the rut (see X1.19.1.1-X1.19.1.3). The mean rut depth is calculated by laying a straight edge across the rut, measuring its depth, then using measurements taken along the length of the rut to compute its mean depth in millimeters.

SHOVING

X1.20 *Description* :



FIG. X1.37 High-Severity Pothole



FIG. X1.38 Low-Severity Railroad Crossing



FIG. X1.39 Medium-Severity Railroad Crossing

X1.20.1 Shoving is a permanent, longitudinal displacement of a localized area of the pavement surface caused by traffic loading. When traffic pushes against the pavement, it produces a short, abrupt wave in the pavement surface. This distress normally occurs only in unstable liquid asphalt mix (cutback or emulsion) pavements.

X1.20.2 Shoves also occur where asphalt pavements abut PCC pavements. The PCC pavements increase in length and push the asphalt pavement, causing the shoving.

X1.20.3 *Severity Levels:*

X1.20.3.1 **L**—Shove causes low-severity ride quality (Fig. X1.44).



FIG. X1.40 High-Severity Railroad Crossing

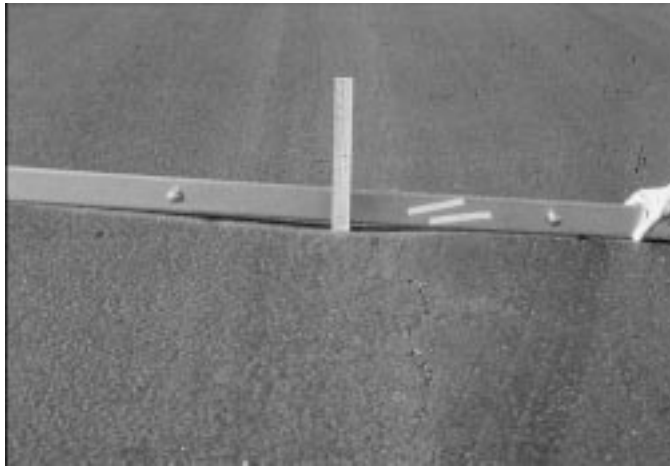


FIG. X1.41 Low-Severity Rutting



FIG. X1.42 Medium-Severity Rutting

X1.20.3.2 **M**—Shove causes medium-severity ride quality (Fig. X1.45).

X1.20.3.3 **H**—Shove causes high-severity ride quality (Fig. X1.46).

X1.20.4 *How to Measure*— Shoves are measured in square meters (feet) of surface area. Shoves occurring in patches are considered in rating the patch, not as a separate distress.

SLIPPAGE CRACKING

X1.21 *Description* —Slippage cracks are crescent or half-moon shaped cracks, usually transverse to the direction of travel. They



FIG. X1.43 High-Severity Rutting



FIG. X1.44 Low-Severity Shoving



FIG. X1.45 Medium-Severity Shoving

are produced when braking or turning wheels cause the pavement surface to slide or deform. This distress usually occurs in overlaps when there is a poor bond between the surface and the next layer of the pavement structure.

X1.21.1 Severity Level:

X1.21.1.1 L—Average crack width is < 10 mm ($\frac{3}{8}$ in.) (Fig. X1.47).

X1.21.1.2 M—One of the following conditions exists (Fig. X1.48): average crack width is ≥ 10 and < 40 mm ($\geq \frac{3}{8}$ and $< 1\frac{1}{2}$ in.); or the area around the crack is moderately spalled, or surrounded with secondary cracks.



FIG. X1.46 High-Severity Shoving



FIG. X1.47 Low-Severity Slippage Cracking



FIG. X1.48 Medium-Severity Slippage Cracking

X1.21.1.3 **H**—One of the following conditions exists (Fig. X1.49): the average crack width is > 40 mm (1- $\frac{1}{2}$ in.) or the area around the crack is broken into easily removed pieces.

X1.21.2 *How to Measure*— The area associated with a given slippage crack is measured in square meters (square feet) and rated according to the highest level of severity in the area.

SWELL

X1.22 *Description* —Swell is characterized by an upward bulge in the pavement's surface, a long, gradual wave more than 3



FIG. X1.49 High-Severity Slippage Cracking

m (10 ft) long (Fig. X1.50). Swelling can be accompanied by surface cracking. This distress usually is caused by frost action in the subgrade or by swelling soil.

X1.22.1 *Severity Level:*

X1.22.1.1 **L**—Swell causes low-severity ride quality. Low-severity swells are not always easy to see but can be detected by driving at the speed limit over the pavement section. An upward motion will occur at the swell if it is present.

X1.22.1.2 **M**—Swell causes medium-severity ride quality.

X1.22.1.3 **H**—Swell causes high-severity ride quality.

X1.22.2 *How to Measure*— The surface area of the swell is measured in square meters (square feet).

WEATHERING AND RAVELING

X1.23 *Description* —Weathering and raveling are the wearing away of the pavement surface due to a loss of asphalt or tar binder and dislodged aggregate particles. These distresses indicate that either the asphalt binder has hardened appreciably or that a poor-quality mixture is present. In addition, raveling may be caused by certain types of traffic, for example, tracked vehicles. Softening of the surface and dislodging of the aggregates due to oil spillage also are included under raveling.

X1.23.1 *Severity Levels:*

X1.23.1.1 **L**—Aggregate or binder has started to wear away. In some areas, the surface is starting to pit (Fig. X1.51). In the case of oil spillage, the oil stain can be seen, but the surface is hard and cannot be penetrated with a coin.

X1.23.1.2 **M**—Aggregate or binder has worn away. The surface texture is moderately rough and pitted (Fig. X1.52). In the case of oil spillage, the surface is soft and can be penetrated with a coin.

X1.23.1.3 **H**—Aggregate or binder has been worn away considerably. The surface texture is very rough and severely pitted. The pitted areas are less than 10 mm (4 in.) in diameter and less than 13 mm (½ in.) deep (Fig. X1.53); pitted areas larger than this are counted as potholes. In the case of oil spillage, the asphalt binder has lost its binding effect and the aggregate has become loose.



FIG. X1.50 Example Swell. Severity level is based on ride quality criteria.

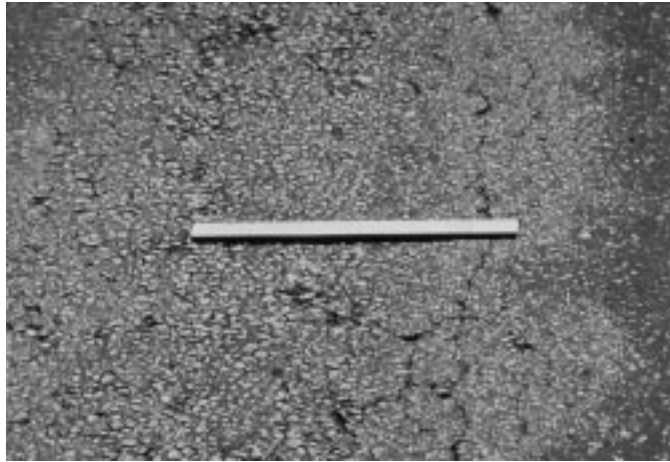


FIG. X1.51 Low-Severity Weathering and Raveling



FIG. X1.52 Medium-Severity Weathering and Raveling



FIG. X1.53 High-Severity Weathering and Raveling

X1.23.2 *How to Measure*— Weathering and raveling are measured in square meters (square feet) of surface area.

X2. DISTRESS IN JOINTED CONCRETE PAVEMENTS

X2.1 This Appendix lists alphabetically 19 distress types for jointed concrete pavements. Distress definitions apply to both plain and reinforced jointed concrete pavements, with the exception of linear cracking distress, which is defined separately for plain and reinforced jointed concrete.

X2.1.1 During the field condition surveys and validation of the PCI, several questions often are asked about the identification and counted method of some of the distresses. Answers to these questions are included under the heading “How to Count.” For convenience, however, the most frequently raised issues are addressed below.

X2.1.1.1 Faulting is counted only at joints. Faulting associated with cracks is not counted separately since it is incorporated into the severity-level definitions of cracks. Crack definitions are also used in defining corner breaks and divided slabs.

X2.1.1.2 Joint seal damage is not counted on a slab-by-slab basis. Instead, a severity level is assigned based on the overall condition of the joint seal in the area.

X2.1.1.3 Cracks in reinforced concrete slabs that are less than $\frac{1}{8}$ in. wide are counted as shrinkage cracks. Shrinkage cracks should not be counted to determine if the slab is broken into four or more pieces.

X2.1.1.4 Low-severity scaling, that is, crazing, should only be counted if there is evidence that future scaling is likely to occur.

X2.1.2 The user should note that the items above are general issues and do not stand alone as inspection criteria. To measure each distress type properly, the inspector must be familiar with the individual distress criteria.

X2.2 *Ride Quality* :

X2.2.1 Ride quality must be evaluated in order to establish a severity level for the following distress types:

X2.2.1.1 Blowup/buckling.

X2.2.1.2 Railroad crossings.

X2.2.2 To determine the effect these distresses have on ride quality, the inspector should drive at the normal operating speed and use the following severity-level definitions of ride quality:

X2.2.2.1 **L**—Low. Vehicle vibrations, for example, from corrugation, are noticeable, but no reduction in speed is necessary for comfort or safety, or individual bumps or settlements, or both, cause the vehicle to bounce slightly but create little discomfort.

X2.2.2.2 **M**—Medium. Vehicle vibrations are significant and some reduction in speed is necessary for safety and comfort, or individual bumps or settlements cause the vehicle to bounce significantly, or both, creating some discomfort.

X2.2.2.3 **H**—High. Vehicle vibrations are so excessive that speed must be reduced considerably for safety and comfort, or individual bumps or settlements, or both, cause the vehicle to bounce excessively, creating substantial discomfort, a safety hazard, or high potential vehicle damage, or a combination thereof.

X2.2.3 The inspector should drive at the posted speed in a sedan that is representative of cars typically seen in local traffic. Pavement sections near stop signs should be rated at a deceleration speed appropriate for the intersection.

BLOWUP/BUCKLING

X2.3 *Description* —Blowups or buckles occur in hot weather, usually at a transverse crack or joint that is not wide enough to permit slab expansion. The insufficient width usually is caused by infiltration of incompressible materials into the joint space. When expansion cannot relieve enough pressure, a localized upward movement of the slab edges (buckling) or shattering will occur in the vicinity of the joint. Blowups also can occur at utility cuts and drainage inlets.

X2.3.1 *Severity Levels*:

X2.3.1.1 **L**—Buckling or shattering causes low-severity ride quality (Fig. X2.1).

X2.3.1.2 **M**—Buckling or shattering causes medium-severity ride quality (Fig. X2.2).

X2.3.1.3 **H**—Buckling or shattering causes high-severity ride quality (Fig. X2.3).

X2.3.2 *How to Count*— At a crack, a blowup is counted as being in one slab; however, if the blowup occurs at a joint and affects two slabs, the distress should be recorded as occurring in two slabs. When a blowup renders the pavement impassable, it should be repaired immediately.

CORNER BREAK

X2.4 *Description* —A corner break is a crack that intersects the joints at a distance less than or equal to one-half the slab length on both sides, measured from the corner of the slab. For example, a slab measuring 3.5 by 6.0 m (11.5 by 20.0 ft) that has a crack 1.5 m (5 ft) on one side and 3.5 m (11.5 ft) on the other side is not considered a corner break; it is a diagonal crack. However, a crack that intersects 0.5 m (4 ft) on one side and 2.5 m (8 ft) on the other is considered a corner break. A corner break differs from a corner spall in that the crack extends vertically through the entire slab thickness, whereas a corner spall intersects the joint at an angle. Load repetition combined with loss of support and curling stresses usually cause corner breaks.

X2.4.1 *Severity Levels*—



FIG. X2.1 Low Severity Blowup/Buckling



FIG. X2.2 Medium Severity Blowup/Buckling



FIG. X2.3 High-Severity Blowup/Buckling

X2.4.1.1 **L**—Break is defined by a low-severity⁴ crack. A low severity crack is < 13 mm ($\frac{1}{2}$ in.), cracks of any width with satisfactory filler; no faulting. The area between the break and the joints is not cracked or may be lightly cracked (Fig. X2.4).

X2.4.1.2 **M**—Break is defined by a medium-severity⁴ crack, or the area between the break and the joints, or both, has a medium crack. A medium severity crack is a nonfilled crack > 13 mm and < 50 mm ($>\frac{1}{2}$ in. and < 2 in.), a nonfilled crack < 50 mm (2 in.) with faulting < 10 mm ($\frac{3}{8}$ in.), or a any filled crack with faulting < 10 mm ($\frac{3}{8}$ in.) (Fig. X2.5).

⁴ The above crack severity definitions are for nonreinforced slabs. For reinforced slabs, see *linear cracking*.



FIG. X2.4 Low-Severity Corner Break



FIG. X2.5 Medium-Severity Corner Break

X2.4.1.3 **H**—Break is defined by a high-severity⁴ crack, or the area between the break and the joints, or both, is highly cracked. A high severity crack is a nonfilled crack >50 mm (2 in.) wide, or any filled or nonfilled crack with faulting >10 mm (3/8 in.) (Fig. X2.6).

X2.4.2 *How to Count*— Distressed slab is recorded as one slab if it:

X2.4.2.1 A single corner break.

X2.4.2.2 More than one break of a particular severity.

X2.4.2.3 Two or more breaks of different severities. For two or more breaks, the highest level of severity should be recorded. For example, a slab containing both low- and medium-severity corner breaks should be counted as one slab with a medium corner break.

DIVIDED SLAB

X2.5 *Description* —Slab is divided by cracks into four or more pieces due to overloading, or inadequate support, or both. If all pieces or cracks are contained within a corner break, the distress is categorized as a severe corner break.

X2.5.1 *Severity Levels*—Table X2.1 lists severity levels for divided slabs. Examples are shown in Figs. X2.7-X2.9.

X2.5.2 *How to Count*— If the divided slab is medium- or high-severity, no other distress is counted for that slab.

DURABILITY (“D”) CRACKING

X2.6 *Description* —“D” cracking is caused by freeze-thaw expansion of the large aggregate, which, over time, gradually breaks



FIG. X2.6 High-Severity Corner Break

TABLE X2.1 Levels of Severity for Faulting

Severity Level	Difference of Elevation
L	>3 and <10 mm (>1/8 and <3/8 in.)
M	>10 and <20 mm (>3/8 and <3/4 in.)
H	>20 mm (>3/4 in.)



FIG. X2.7 Low-Severity Divided Slab

down the concrete. This distress usually appears as a pattern of cracks running parallel and close to a joint or linear crack. Since the concrete becomes saturated near joints and cracks, a dark-colored deposit can usually be found around fine “D” cracks. This type of distress may eventually lead to disintegration of the entire slab.

X2.6.1 Severity Levels:

X2.6.1.1 L—“D” cracks cover less than 15 % of slab area. Most of the cracks are tight, but a few pieces may be loose and or missing (Fig. X2.10).

X2.6.1.2 M—One of the following conditions exists (Fig. X2.11): “D” cracks cover less than 15 % of the area and most of the pieces are loose and or missing, or “D” cracks cover more than 15 % of the area. Most of the cracks are tight, but a few pieces may be loose and or missing.

X2.6.1.3 H—“D” cracks cover more than 15 % of the area and most of the pieces have come out or could be removed easily (Fig. X2.12).

X2.6.2 How to Count— When the distress is located and rated at one severity, it is counted as one slab. If more than one severity level exists, the slab is counted as having the higher severity distress. For example, if low and medium “D” cracking are on the same slab, the slab is counted as medium-severity cracking only.



FIG. X2.8 Medium-Severity Divided Slab



FIG. X2.9 High-Severity Divided Slab

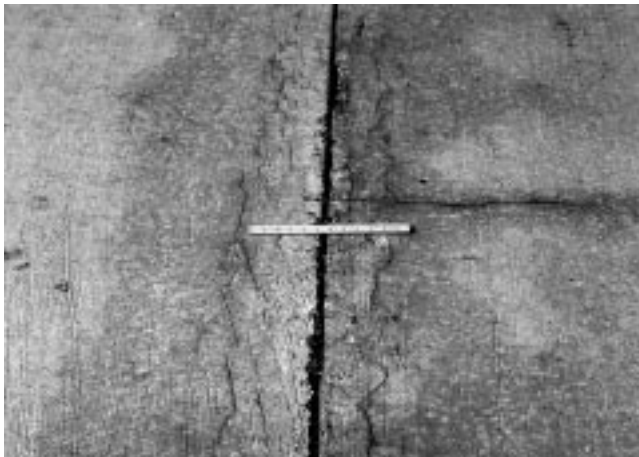


FIG. X2.10 Low-Severity Durability Cracking

FAULTING

X2.7 Description :

X2.7.1 Faulting is the difference in elevation across a joint. Some common causes of faulting are as follows:

X2.7.1.1 Settlement because of soft foundation.

X2.7.1.2 Pumping or eroding of material from under the slab.

X2.7.1.3 Curling of the slab edges due to temperature and moisture changes.



FIG. X2.11 Medium-Severity Durability Cracking



FIG. X2.12 High-Severity Durability Cracking

X2.7.2 *Severity Levels*— Severity levels are defined by the difference in elevation across the joint as indicated in Table X2.2. Figs. X2.13-X2.15 show examples of the different severity levels.

X2.7.3 *How to Count*— Faulting across a joint is counted as one slab. Only affected slabs are counted. Faults across a crack are not counted as distress but are considered when defining crack severity.

JOINT SEAL DAMAGE

X2.8 *Description* :

X2.8.1 Joint seal damage is any condition that enables soil or rocks to accumulate in the joints or allows significant water infiltration. Accumulation of incompressible materials prevents the slab from expanding and may result in buckling, shattering, or spalling. A pliable joint filler bonded to the edges of the slabs protects the joints from material accumulation and prevents water from seeping down and softening the foundation supporting the slab. Typical types of joint seal damage are as follows:

- X2.8.1.1 Stripping of joint sealant.
- X2.8.1.2 Extrusion of joint sealant.
- X2.8.1.3 Weed growth.
- X2.8.1.4 Hardening of the filler (oxidation).
- X2.8.1.5 Loss of bond to the slab edges.

TABLE X2.2 Levels of Severity for Punchouts

Severity of the Majority of Cracks	Number of Pieces		
	2 to 3	4 to 5	>5
L	L	L	M
M	L	M	H
H	M	H	H



FIG. X2.13 Low-Severity Faulting



FIG. X2.14 Medium-Severity Faulting



FIG. X2.15 High-Severity Faulting

X2.8.1.6 Lack or absence of sealant in the joint.

X2.8.2 *Severity Levels:*

X2.8.2.1 **L**—Joint sealant is in generally good condition throughout section (Fig. X2.16). Sealant is performing well, with only minor damage (see X2.8.1.1-X2.8.1.6). Joint seal damage is at low severity if a few of the joints have sealer, which has debonded from, but is still in contact with, the joint edge. This condition exists if a knife blade can be inserted between sealer and joint face without resistance.

X2.8.2.2 **M**—Joint sealant is in generally fair condition over the entire section, with one or more of the above types of damage



FIG. X2.16 Low-Severity Joint Seal Damage

occurring to a moderate degree. Sealant needs replacement within two years (Fig. X2.17). Joint seal damage is at medium severity if a few of the joints have any of the following conditions: joint sealer is in place, but water access is possible through visible openings no more than 3 mm (1/8 in.) wide. If a knife blade cannot be inserted easily between sealer and joint face, this condition does not exist; pumping debris are evident at the joint; joint sealer is oxidized and “lifeless” but pliable (like a rope), and generally fills the joint opening; or, vegetation in the joint is obvious but does not obscure the joint opening.

X2.8.2.3 **H**—Joint sealant is in generally poor condition over the entire section, with one or more of the above types of damage occurring to a severe degree. Sealant needs immediate replacement (Fig. X2.18). Joint seal damage is at high severity if 10 % or more of the joint sealer exceeds limiting criteria listed above or if 10 % or more of sealer is missing.

X2.8.3 *How to Count*— Joint seal damage is not counted on a slab-by-slab basis but is rated based on the overall condition of the sealant over the entire area.

LANE/SHOULDER DROP-OFF

X2.9 *Description* —Lane/shoulder drop-off is the difference between the settlement or erosion of the shoulder and the pavement travel-lane edge. The elevation difference can be a safety hazard, and it also can cause increased water infiltration.

X2.9.1 *Severity Levels:*

X2.9.1.1 **L**—The difference between the pavement edge and shoulder is >25 and ≤50 mm (>1 and ≤2 in.) (Fig. X2.19).

X2.9.1.2 **M**—The difference in elevation is >50 and ≤100 mm (>2 and ≤4 in.) (Fig. X2.20).

X2.9.1.3 **H**—The difference in elevation is >100 mm (>4 in.) (Fig. X2.21).

X2.9.2 *How to Count*— The mean lane/shoulder drop-off is computed by averaging the maximum and minimum drop along the slab. Each slab exhibiting distress is measured separately and counted as one slab with the appropriate severity level.

LINEAR CRACKING (Longitudinal, Transverse, and Diagonal Cracks)

X2.10 *Description* —These cracks, which divide the slab into two or three pieces, usually are caused by a combination of

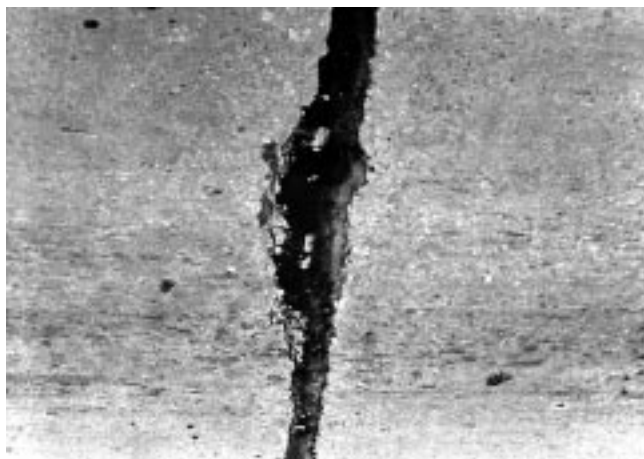


FIG. X2.17 Medium-Severity Joint Seal Damage



FIG. X2.18 High-Severity Joint Seal Damage



FIG. X2.19 Low-Severity Lane/Shoulder Drop-Off

repeated traffic loading, thermal gradient curling, and repeated moisture loading. (Slabs divided into four or more pieces are counted as divided slabs.) Hairline cracks that are only a few feet long and do not extend across the entire slab, are counted as shrinkage cracks.

X2.10.1 *Severity Levels (Nonreinforced Slabs):*

X2.10.1.1 **L**—Nonfilled⁴ cracks ≤ 13 mm ($\leq 1/2$ in.) or filled cracks of any width with the filler in satisfactory condition. No faulting exists (Fig. X2.22).

X2.10.1.2 **M**—One of the following conditions exists: nonfilled crack with a width >13 and ≤ 50 mm ($>1/2$ and ≤ 2 in.); nonfilled crack of any width ≤ 50 mm (2 in.) with faulting of <10 mm ($3/8$ in.), or filled crack of any width with faulting <10 mm ($3/8$ in.) (Fig. X2.23).

X2.10.1.3 **H**—One of the following conditions exists: nonfilled crack with a width >50 mm (2 in.), or filled or nonfilled crack of any width with faulting >10 mm ($3/8$ in.) (Fig. X2.24).

X2.10.2 *Reinforced Slabs:*

X2.10.2.1 **L**—Nonfilled cracks ≥ 3 and < 25 mm ($\geq 1/8$ to < 1 in.) wide; filled crack of any width with the filler in satisfactory condition. No faulting exists.

X2.10.2.2 **M**—One of the following conditions exists: nonfilled cracks with a width ≥ 25 and < 75 mm (≥ 1 and < 3 in.) and no faulting; nonfilled crack of any width ≤ 75 mm (3 in.) with ≤ 10 mm ($3/8$ in.) of faulting, or filled crack of any width with ≤ 10 mm ($3/8$ in.) faulting.

X2.10.2.3 **H**—Once of the following conditions exists: nonfilled crack >75 mm (3 in.) wide, or filled or nonfilled crack of any width with faulting >10 mm ($3/8$ in.).

X2.10.3 *How to Count*— One the severity has been identified, the distress is recorded as one slab. If two medium severity cracks are within one slab, the slab is counted as having one high-severity crack. Slabs divided into four or more pieces are counted as divided slabs. In reinforced slabs, cracks <3 mm ($1/8$ in.) wide are counted as shrinkage cracks. Slabs longer than 9 m (29.5 ft) are divided into approximately equal length“ slabs” having imaginary joints assumed to be in perfect condition.

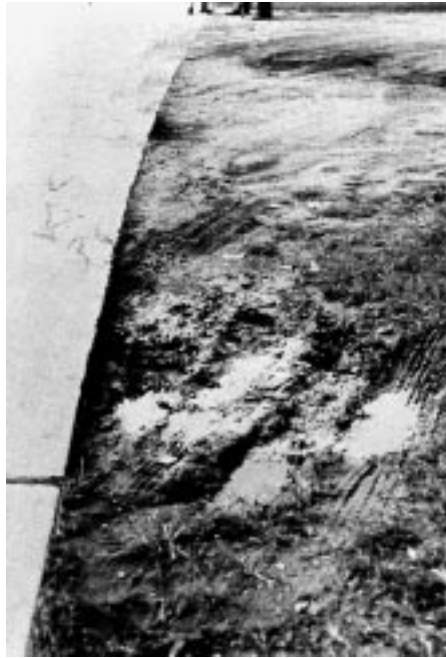


FIG. X2.20 Medium-Severity Lane/Shoulder Drop-Off



FIG. X2.21 High-Severity Lane/Shoulder Drop-Off

PATCHING, LARGE (MORE THAN 0.5 M² [5.5 FT²]) AND UTILITY CUTS

X2.11 *Description*—A patch is an area where the original pavement has been removed and replaced by filler material. A utility cut is a patch that has replaced the original pavement to allow the installation or maintenance of underground utilities. The severity levels of a utility cut are assessed according to the same criteria as large patching.

X2.11.1 *Severity Levels:*

X2.11.1.1 **L**—Patch is functioning well, with little or no deterioration (Fig. X2.25).

X2.11.1.2 **M**—Patch is moderately deteriorated, or moderate spalling can be seen around the edges, or both. Patch material can be dislodged with considerable effort (Fig. X2.26).

X2.11.1.3 **H**—Patch is badly deteriorated. The extent of the deterioration warrants replacement (Fig. X2.27).

X2.11.2 *How to Count*— If a single slab has one or more patches with the same severity level, it is counted as one slab containing that distress. If a single slab has more than one severity level, it is counted as one slab with the higher severity level.



FIG. X2.22 Low-Severity Linear Cracking



FIG. X2.23 Medium-Severity Linear Cracking

PATCHING, SMALL (LESS THAN 0.5 M² [5.5 FT²])

X2.12 *Description* —A patch is an area where the original pavement has been removed and replaced by a filler material.

X2.12.1 *Severity Levels:*

X2.12.1.1 **L**—Patch is functioning well with little or no deterioration (Fig. X2.28).

X2.12.1.2 **M**—Patch is moderately deteriorated. Patch material can be dislodged with considerable effort (Fig. X2.29).

X2.12.1.3 **H**—Patch is badly deteriorated. The extent of deterioration warrants replacement (Fig. X2.30).

X2.12.2 *How to Count*— If a single slab has one or more patches with the same severity level, it is counted as one slab containing that distress. If a single slab has more than one severity level, it is counted as one slab with the higher severity level.

POLISHED AGGREGATE

X2.13 *Description* —This distress is caused by repeated traffic applications. Polished aggregate is present when close examination of a pavement reveals that the portion of aggregate extending above the asphalt is either very small, or there are no rough or angular aggregate particles to provide good skid resistance.

X2.13.1 *Severity Levels*— No degrees of severity are defined; however, the degree of polishing should be significant before it is included in the condition survey and rated as a defect (Fig. X2.31).

X2.13.2 *How to Count*— A slab with polished aggregate is counted as one slab.



FIG. X2.24 High-Severity Linear Cracking



FIG. X2.25 Low-Severity Patching, Large and Utility Cuts



FIG. X2.26 Medium-Severity Patching, Large and Utility Cuts

POPOUTS

X2.14 *Description* —A popout is a small piece of pavement that breaks loose from the surface due to freeze-thaw action, combined with expansive aggregates. Popouts usually range in diameter from approximately 25 to 100 mm (1 to 4 in.) and in depth from 13 to 50 mm ($\frac{1}{2}$ to 2 in.).

X2.14.1 *Severity Levels*— No degrees of severity are defined for popouts; however, popouts must be extensive before they are counted as a distress. Average popout density must exceed approximately three popouts/m² over the entire slab area (Fig. X2.32).



FIG. X2.27 High-Severity Patching, Large and Utility Cuts



FIG. X2.28 Low-Severity Patching, Small



FIG. X2.29 Medium-Severity Patching, Small

X2.14.2 *How to Count*— The density of the distress must be measured. If there is any doubt that the average is greater than three popouts per square yard, at least three random 1 m² (11 ft²) areas should be checked. When the average is greater than this density, the slab should be counted.

PUMPING

X2.15 *Description*—Pumping is the ejection of material from the slab foundation through joints or cracks. This is caused by deflection of the slab with passing loads. As a load moves across the joint between the slabs, water is first forced under the leading



FIG. X2.30 High-Severity Patching, Small

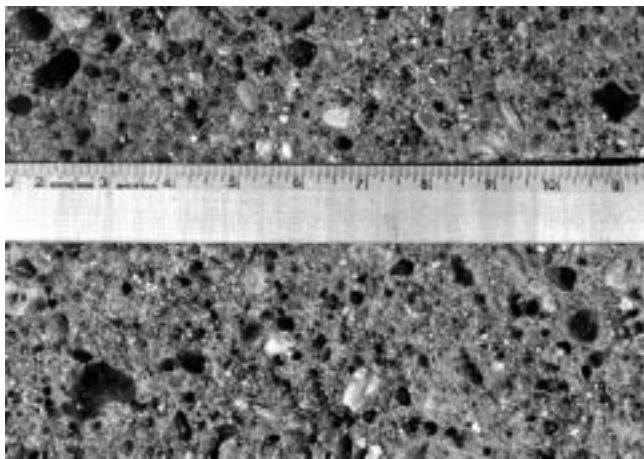


FIG. X2.31 Polished Aggregate



FIG. X2.32 Popouts

slab, and then forced back under the trailing slab. This action erodes and eventually removes soil particles resulting in progressive loss of pavement support. Pumping can be identified by surface stains and evidence of base or subgrade material on the pavement close to joints or cracks. Pumping near joints is caused by poor joint sealer and indicates loss of support; repeated loading eventually will produce cracks. Pumping also can occur along the slab edge causing loss of support.

X2.15.1 *Severity Levels*— No degrees of severity are defined. It is enough to indicate that pumping exists (Fig. X2.33 and Fig. X2.34).

X2.15.2 *How to Count*— One pumping joint between two slabs is counted as two slabs; however, if the remaining joints around



FIG. X2.33 Pumping



FIG. X2.34 Pumping

the slab are also pumping, one slab is added per additional pumping joint.

PUNCHOUT

X2.16 *Description*—This distress is a localized area of the slab that is broken into pieces. The punchout can take many different shapes and forms, but it is usually defined by a crack and a joint. The distance between the joint and the crack or two closely spaced cracks is ≤ 1.5 m (5 ft) wide. This distress is caused by heavy repeated loads, inadequate slab thickness, loss of foundation support, or a localized concrete construction deficiency, for example, honeycombing.

X2.16.1 *Severity Levels*—Table X2.2 lists the severity levels for punchouts, and Figs. X2.35-X2.37 show examples.

X2.16.2 *How to Count*— If a slab contains more than one punchout or a punchout and a crack, it is counted as shattered.

RAILROAD CROSSING

X2.17 *Description*—Railroad crossing distress is characterized by depressions or bumps around the tracks.



FIG. X2.35 Low-Severity Punchout



FIG. X2.36 Medium-Severity Punchout



FIG. X2.37 High-Severity Punchout

X2.17.1 *Severity Levels:*

X2.17.1.1 **L**—Railroad crossing causes low-severity ride quality (Fig. X2.38).

X2.17.1.2 **M**—Railroad crossing causes medium-severity ride quality (Fig. X2.39).

X2.17.1.3 **H**—Railroad crossing causes high-severity ride quality (Fig. X2.40).

X2.17.2 *How to Count*— The number of slabs crossed by the railroad tracks is counted. Any large bump created by the tracks should be counted as part of the crossing.



FIG. X2.38 Low-Severity Railroad Crossing



FIG. X2.39 Medium-Severity Railroad Crossing



FIG. X2.40 High-Severity Railroad Crossing

SCALING, MAP CRACKING, AND CRAZING

X2.18 *Description* —Map cracking or crazing refers to a network of shallow, fine, or hairline cracks that extend only through the upper surface of the concrete. The cracks tend to intersect at angles of 120°. Map cracking or crazing usually is caused by concrete over-finishing and may lead to surface scaling, which is the breakdown of the slab surface to a depth of approximately 6 to 13 mm ($\frac{1}{4}$ to $\frac{1}{2}$ in.). Scaling also may be caused by deicing salts, improper construction, freeze-thaw cycles and poor aggregate. The type of scaling defined here is not caused by “D” cracking. If scaling is caused by “D” cracking, it should be counted under that distress only.

X2.18.1 Severity Levels:

X2.18.1.1 **L**—Crazing or map cracking exists over most of the slab area; the surface is in good condition, with only minor scaling present (Fig. X2.41).

X2.18.1.2 **M**—Slab is scaled but less than 15 % of the slab is affected (Fig. X2.42).

X2.18.1.3 **H**—Slab is scaled over more than 15 % of its area (Fig. X2.43).

X2.18.2 *How to Count*— A scaled slab is counted as one slab. Low-severity crazing only should be counted if the potential for scaling appears to be imminent or a few small pieces come out.

SHRINKAGE CRACKS

X2.19 *Description* —Shrinkage cracks are hairline cracks that usually are less than 2-m long and do not extend across the entire slab. They are formed during the setting and curing of the concrete and usually do not extend through the depth of the slab.

X2.19.1 *Severity Levels*— No degrees of severity are defined. It is enough to indicate that shrinkage cracks are present (Fig. X2.44).

X2.19.2 *How to Count*— If any shrinkage cracks exist on a particular slab, the slab is counted as one slab with shrinkage cracks.

SPALLING, CORNER

X2.20 *Description* —Corner spalling is the breakdown of the slab within approximately 0.5 m (1.5 ft) of the corner. A corner spall differs from a corner break in that the spall usually angles downward to intersect the joint, whereas a break extends vertically through the slab corner. Spalls less than 130 mm (5 in.) from the crack to the corner on both sides should not be counted.

X2.20.1 *Severity Levels*—Table X2.3 lists the levels of severity for corner spalling. Figs. X2.45-X2.47 show examples. Corner spalling with an area of less than 650 cm (10 in.²) from the crack to the corner on both sides should not be counted.

X2.20.2 *How to Count*— If one or more corner spalls with the same severity level are in a slab, the slab is counted as one slab with corner spalling. If more than one severity level occurs, it is counted as one slab with the higher severity level.

SPALLING, JOINT

X2.21 Description :

X2.21.1 Joint spalling is the breakdown of the slab edges within 0.5 m (1.5 ft) of the joint. A joint spall usually does not extend vertically through the slab, but intersects the joint at an angle. Spalling results from:

X2.21.1.1 Excessive stresses at the joint caused by traffic loading or by infiltration of incompressible materials.

X2.21.1.2 Weak concrete at the joint caused by overworking.

X2.21.1.3 Water accumulation in the joint and freeze-thaw action.

X2.21.2 *Severity Levels*—Table X2.4 and Figs. X2.48-X2.50 show the severity levels of joint spalling. A frayed joint where the concrete has been worn away along the entire joint is rated as low severity.

X2.21.3 *How to Count*— If spall is along the edge of one slab, it is counted as one slab with joint spalling. If spalling is on more than one edge of the same slab, the edge having the highest severity is counted and recorded as one slab. Joint spalling also can occur along the edges of two adjacent slabs. If this is the case, each slab is counted as having joint spalling.

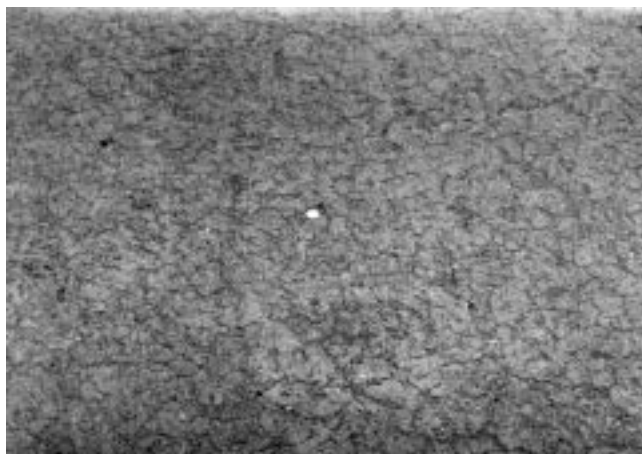


FIG. X2.41 Low-Severity Scaling, Map Cracking, and Crazing

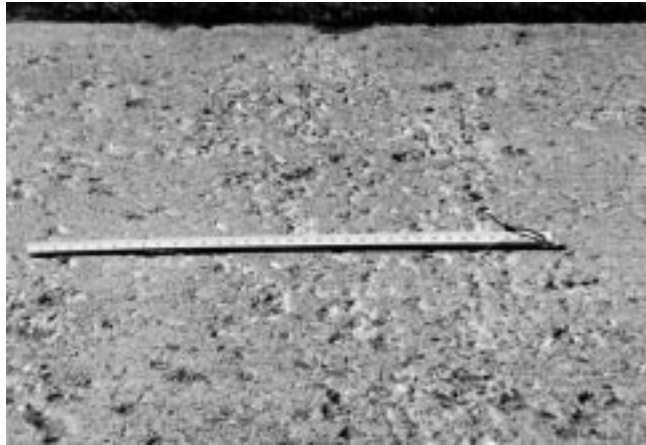


FIG. X2.42 Medium-Severity Scaling, Map Cracking, and Crazing

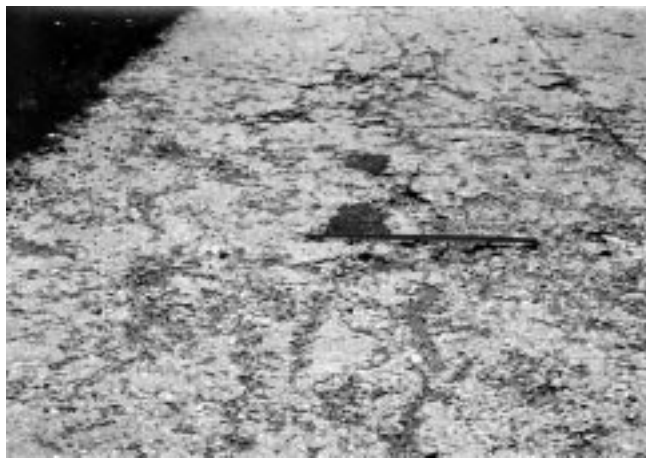


FIG. X2.43 High-Severity Scaling, Map Cracking, and Crazing

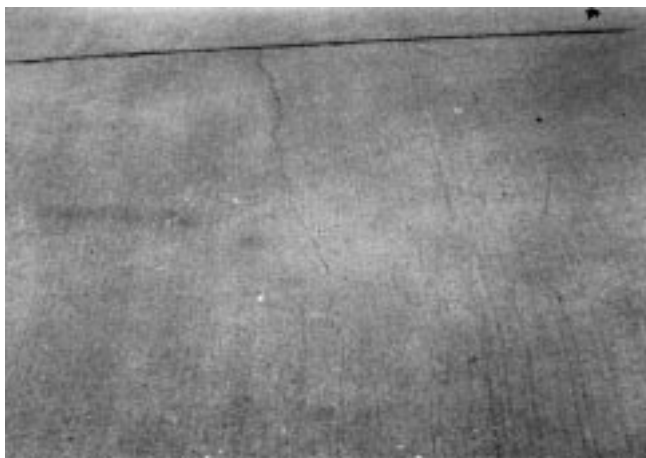


FIG. X2.44 Shrinkage Cracks

TABLE X2.3 Levels of Severity for Corner Spalling

Depth of Spall	Dimensions of Sides of Spall	
	130 × 130 mm to 300 × 300 mm (5 × 5 in.) to (12 × 12 in.)	300 × 300 mm (>12 × 12 in.)
<25 mm (1 in.)	L	L
>25 to 50 mm (1 to 2 in.)	L	M
>50 mm (2 in.)	M	H

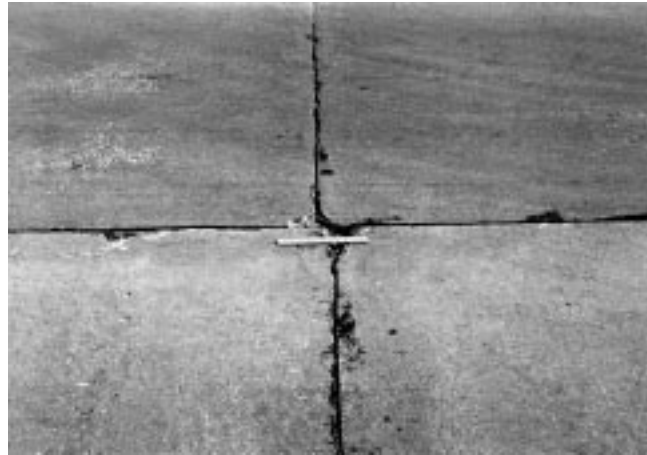


FIG. X2.45 Low-Severity Spalling, Corner



FIG. X2.46 Medium-Severity Spalling, Corner

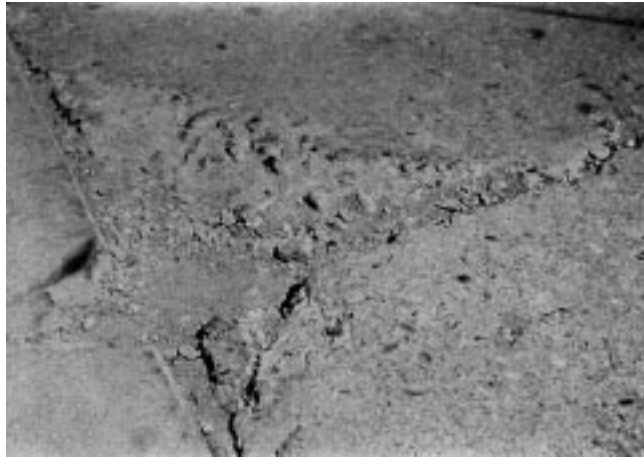


FIG. X2.47 High-Severity Spalling, Corner

TABLE X2.4 Levels of Severity for Joint Spalling

Spall Pieces	Width of Spall	Length of Spall	
		<0.5 m (1.5 ft)	>0.5 m (1.5 ft)
Tight—cannot be removed easily (maybe a few pieces missing.	<100 mm (4 in.)	L	L
	>100 mm	L	L
Loose—can be removed and some pieces are missing; if most or all pieces are missing, spall is shallow, less than 25 mm (1 in.).	<100 mm	L	M
	>100 mm	L	M
Missing—most or all pieces have been removed.	<100 mm	L	M
	>100 mm	M	H



FIG. X2.48 Low-Severity Spalling, Joint



FIG. X2.49 Medium-Severity Spalling, Joint

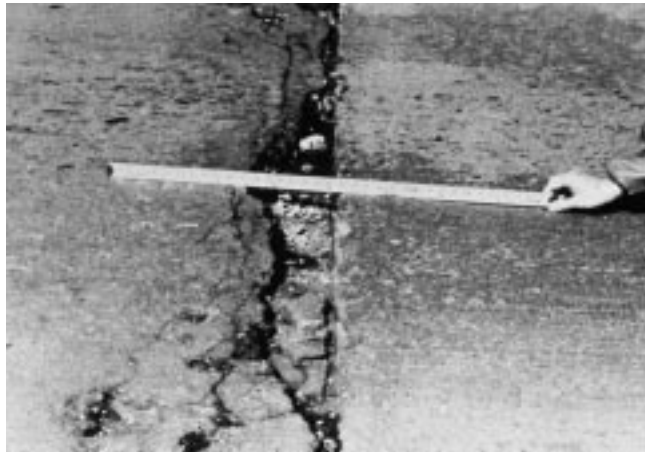


FIG. X2.50 High-Severity Spalling, Joint

X3. DEDUCT VALUE CURVES FOR ASPHALT

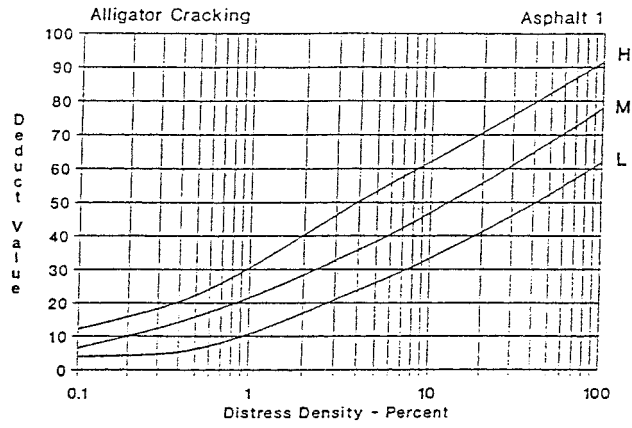


FIG. X3.1 Alligator Cracking

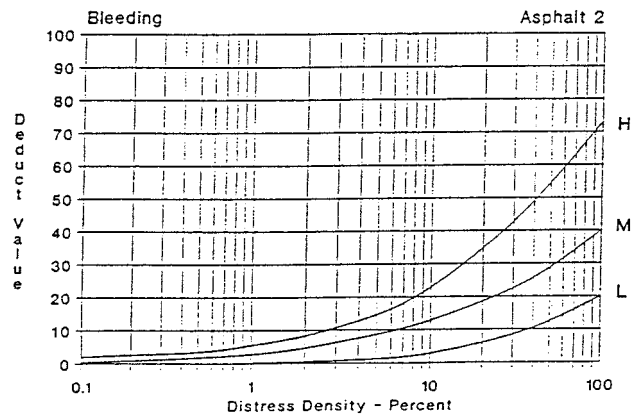


FIG. X3.2 Bleeding

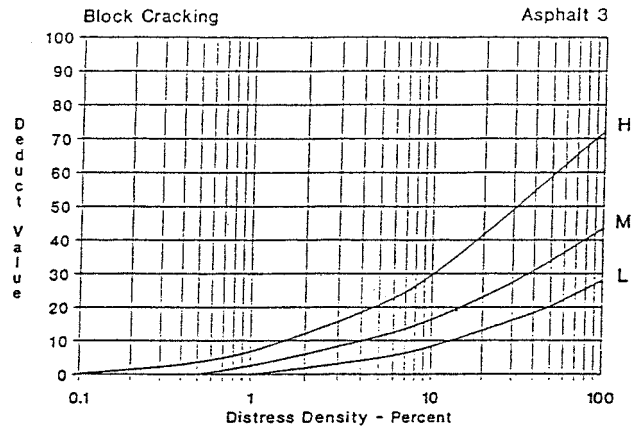


FIG. X3.3 Block Cracking

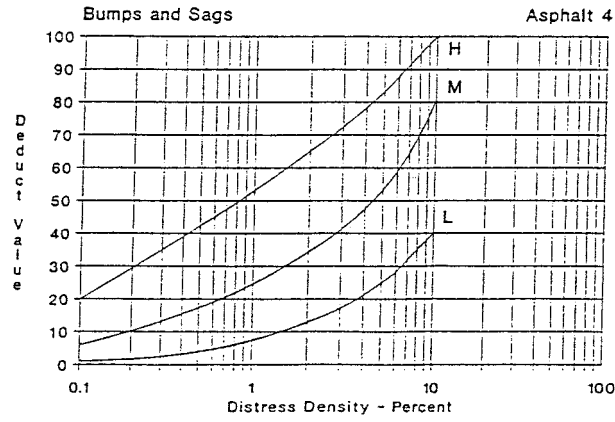


FIG. X3.4 Bumps and Sags

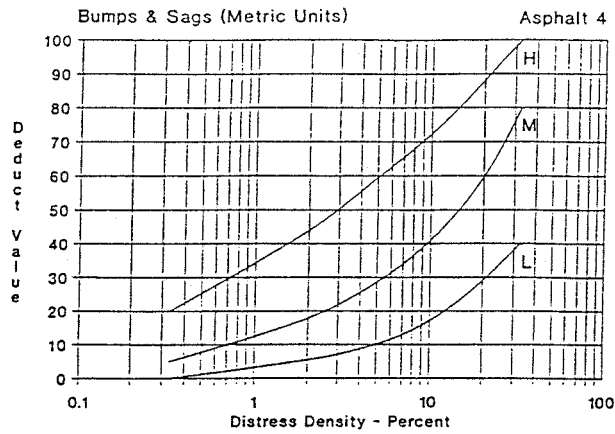


FIG. X3.5 Bumps and Sags (Metric units)

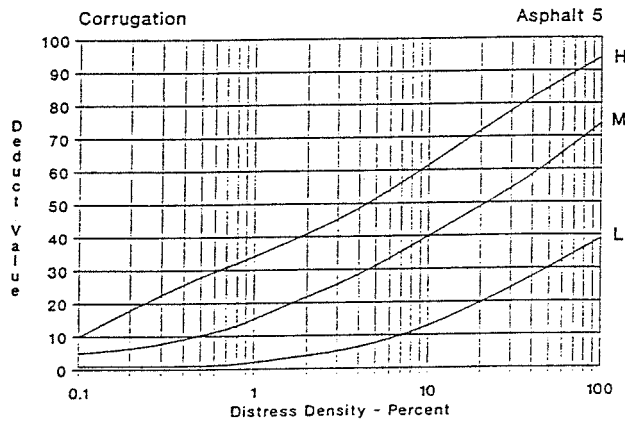


FIG. X3.6 Corrugation

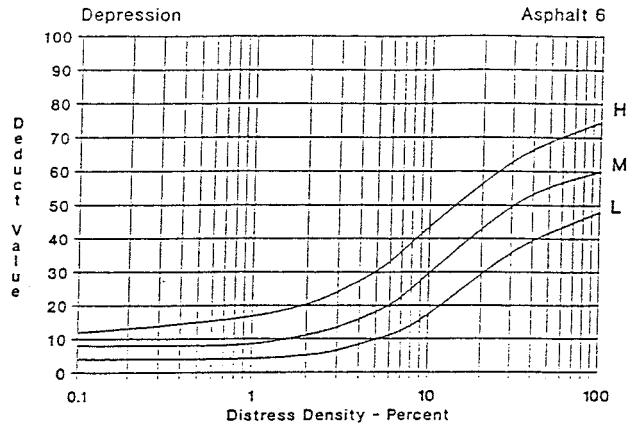


FIG. X3.7 Depression

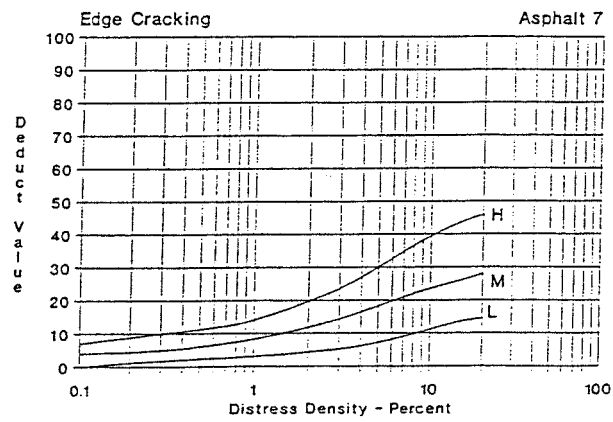


FIG. X3.8 Edge Cracking

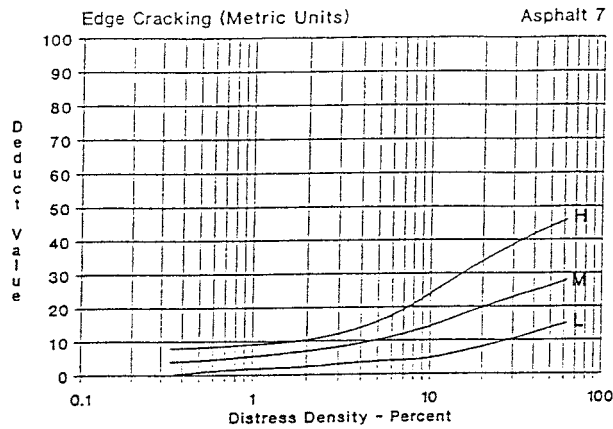


FIG. X3.9 Edge Cracking (metric units)

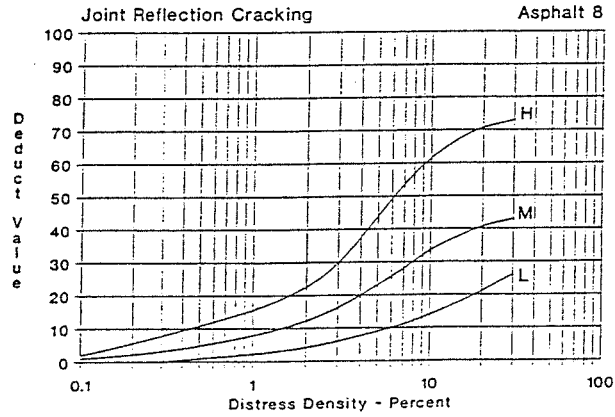


FIG. X3.10 Joint Reflection Cracking

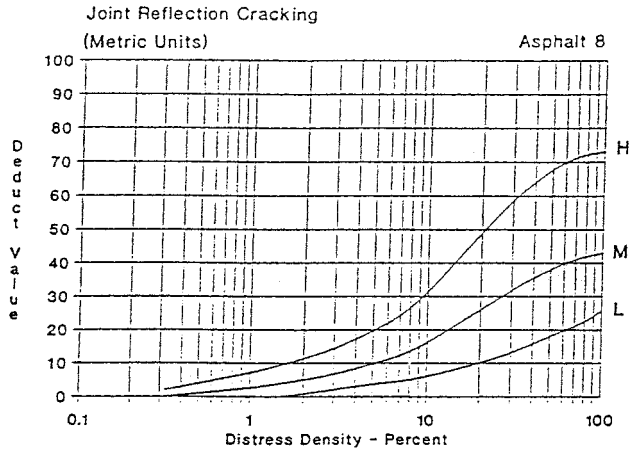


FIG. X3.11 Joint Reflection Cracking (metric units)

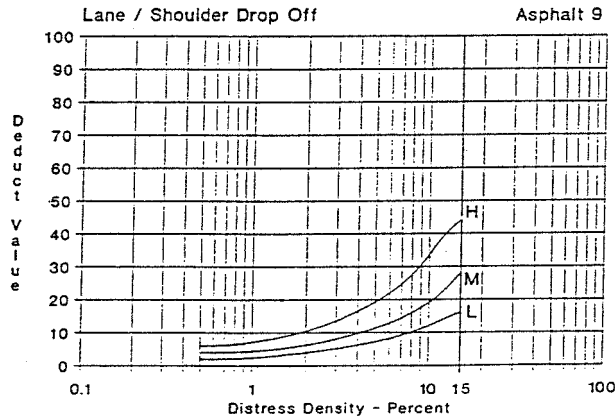


FIG. X3.12 Lane/Shoulder Drop-Off

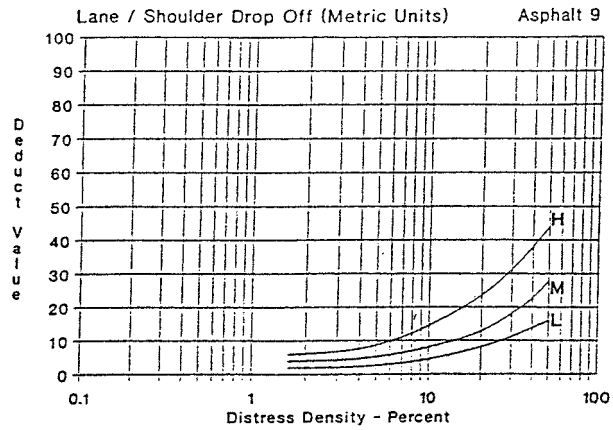


FIG. X3.13 Lane/Shoulder Drop-Off (metric units)

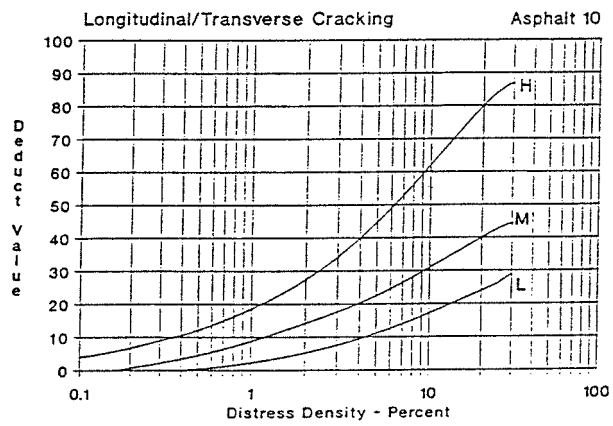


FIG. X3.14 Longitudinal/Transverse Cracking

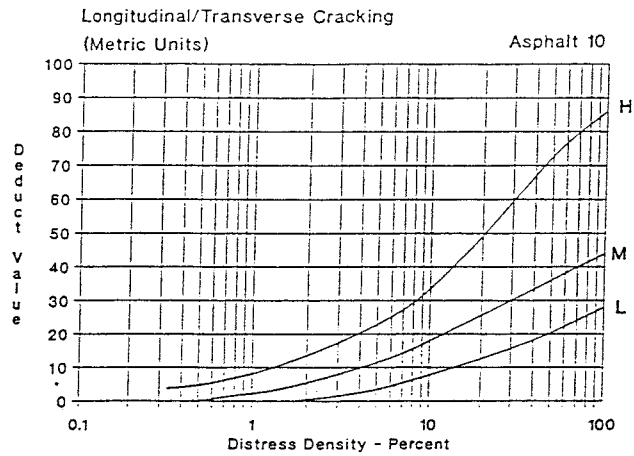


FIG. X3.15 Longitudinal/Transverse Cracking (metric units)

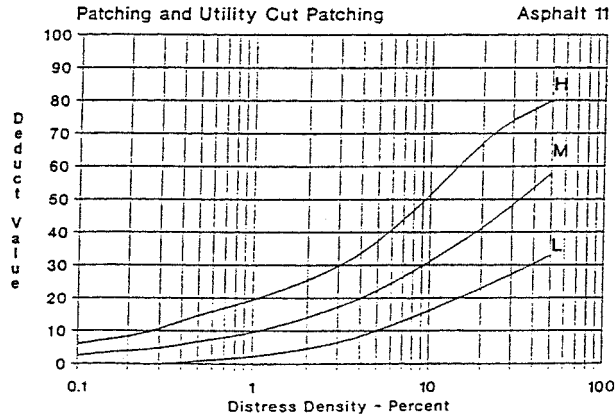


FIG. X3.16 Patching and Utility Cut Patching

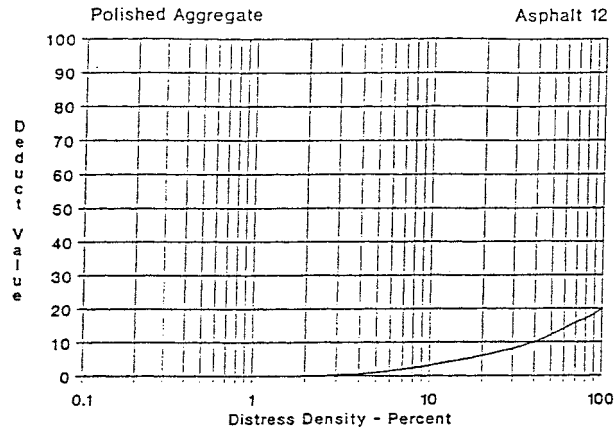


FIG. X3.17 Polished Aggregate

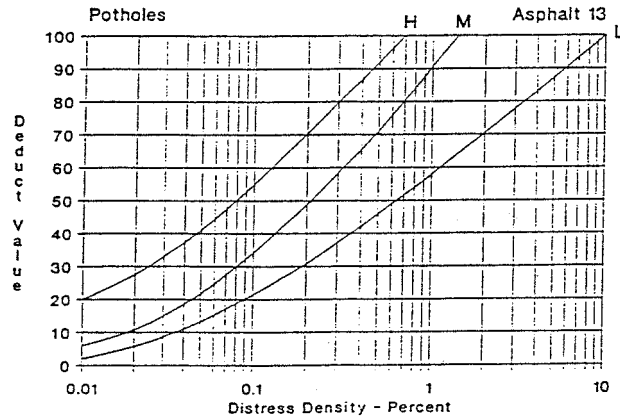


FIG. X3.18 Potholes

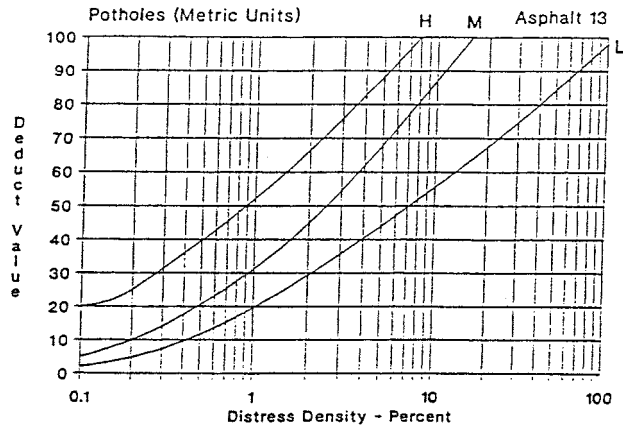


FIG. X3.19 Potholes (metric units)

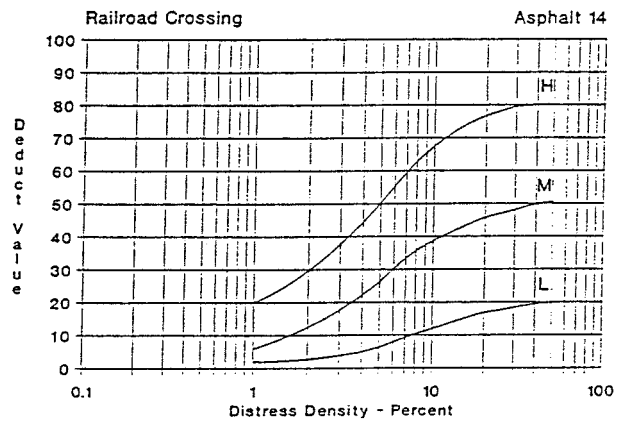


FIG. X3.20 Railroad Crossing

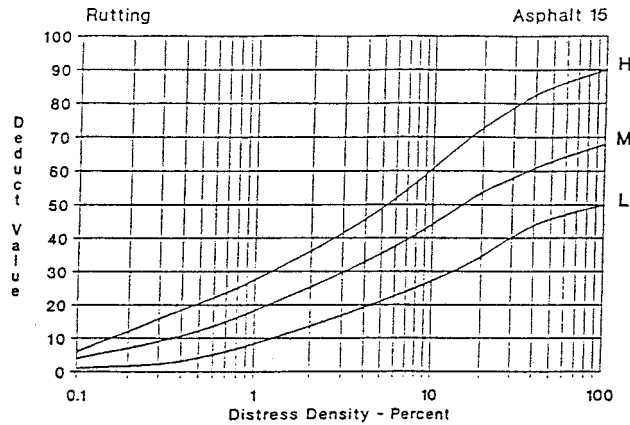


FIG. X3.21 Rutting

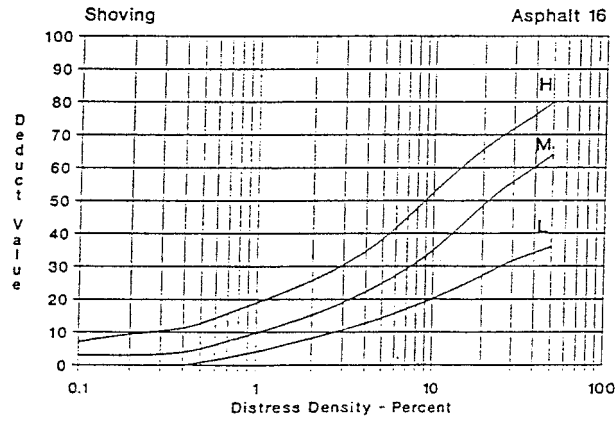


FIG. X3.22 Shoving

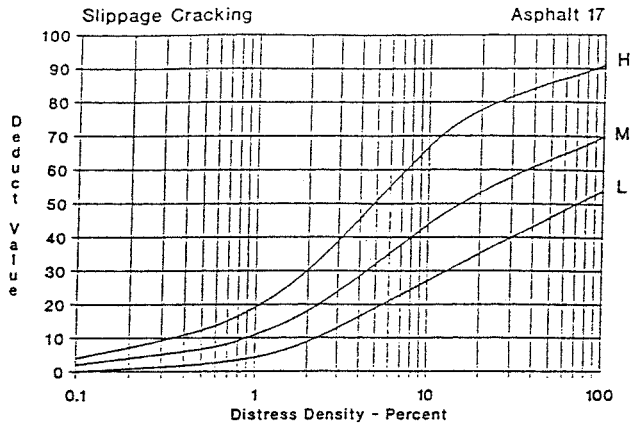


FIG. X3.23 Slippage Cracking

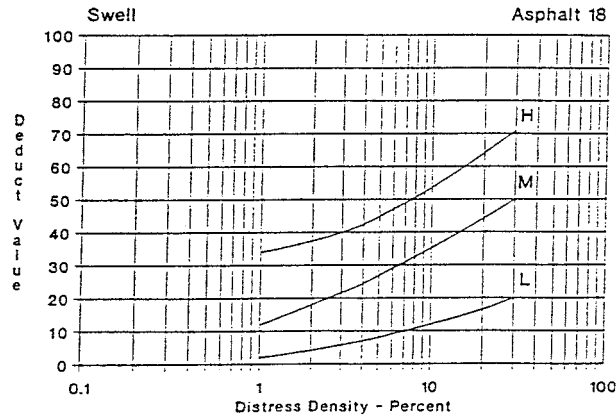


FIG. X3.24 Swell

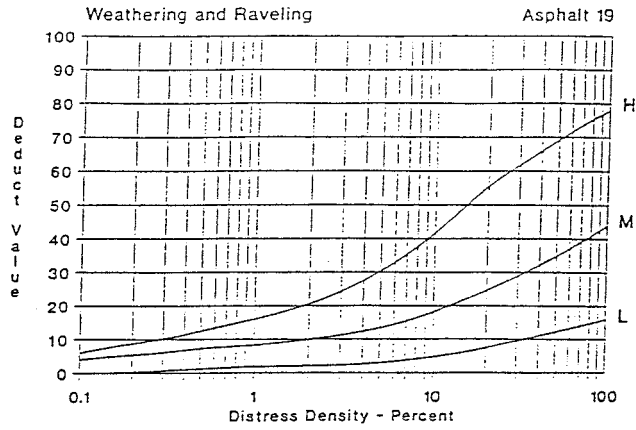


FIG. X3.25 Weathering and Raveling

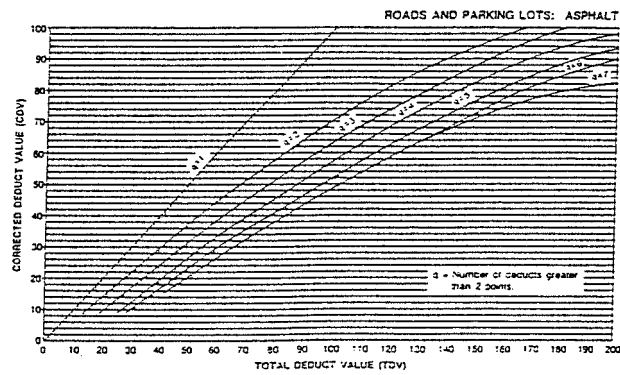


FIG. X3.26 Total Deduct Value

X4. DEDUCT VALUE CURVES FOR CONCRETE

REFERENCES

- (1) PAVER Asphalt Distress Manual, US Army Construction Engineering Laboratories, TR 97/104, June 1997.
- (2) PAVER Asphalt Distress Manual, US Army Construction Engineering Laboratories, TR 97/105, June 1997.
- (3) Carey, W.N., Jr. and Irick, P.E., "The Pavement Serviceability-Performance Concept," HRB Bulletin 250, 1960.
- (4) Sayers, M. W., Gillespie, T. D., and Queiroz, C. A. V., "The International Road Roughness Experiment: Establishing Correlation and a Calibration Standard for Measurements," World Bank Technical Paper No. 45, the International Bank for Reconstruction and Development/the World Bank, Washington, DC, 1986.

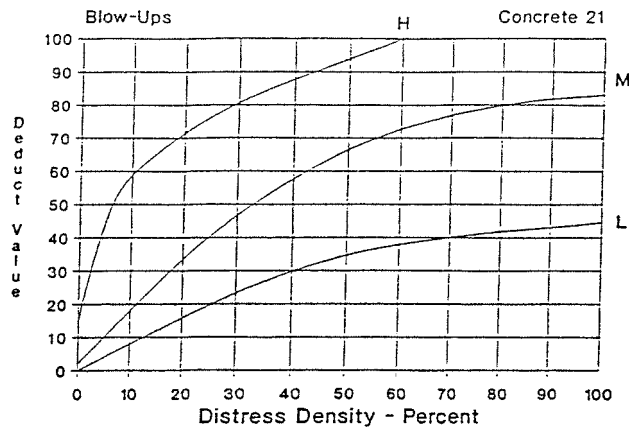


FIG. X4.1 Blowups

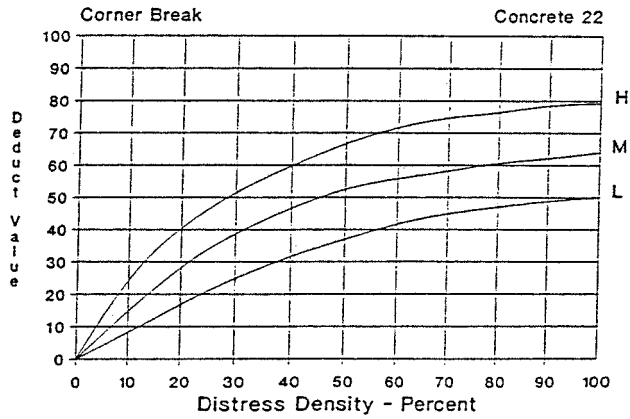


FIG. X4.2 Corner Break

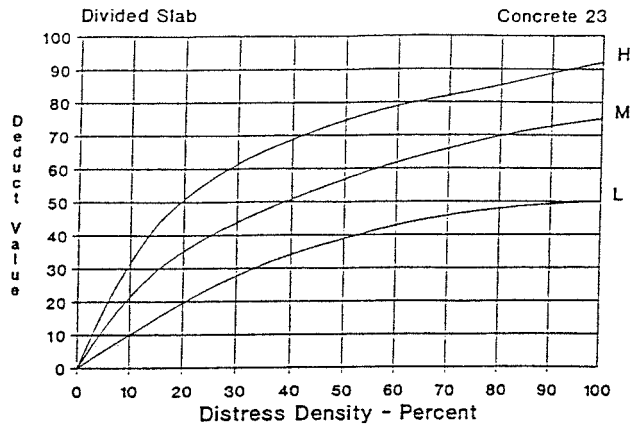


FIG. X4.3 Divided Slab

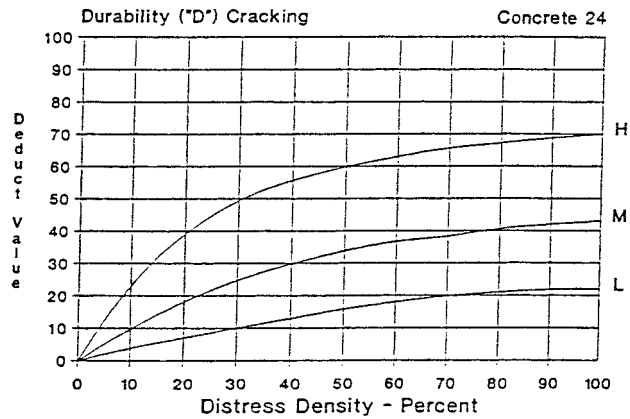


FIG. X4.4 Durability ("D") Cracking

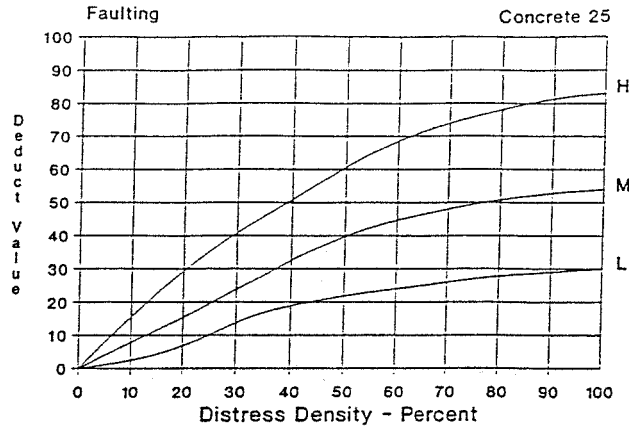


FIG. X4.5 Faulting

Joint Seal Damage Concrete 26

Joint seal damage is not rated by density. The severity of the distress is determined by the sealant's overall condition for a particular sample unit.

The deduct values for the three levels of severity are:

LOW 2 points

MEDIUM 4 points

HIGH 8 points

FIG. X4.6 Rigid Pavement Deduct Values, Distress 26, joint seal damage

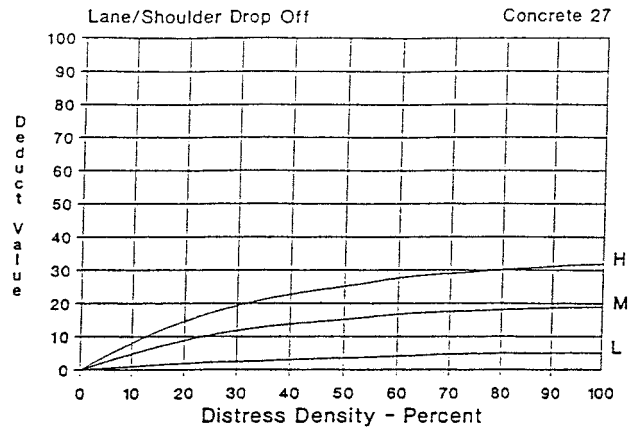


FIG. X4.7 Lane/Shoulder Drop-Off

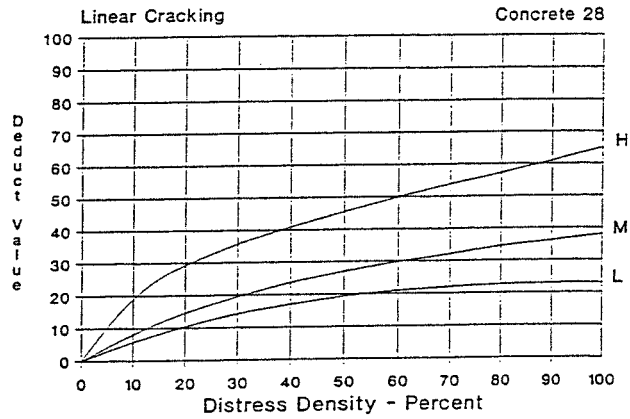


FIG. X4.8 Linear Cracking

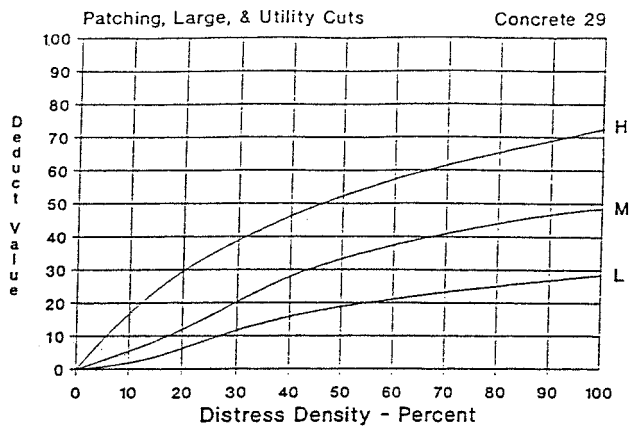


FIG. X4.9 Patching, Large, and Utility Cuts

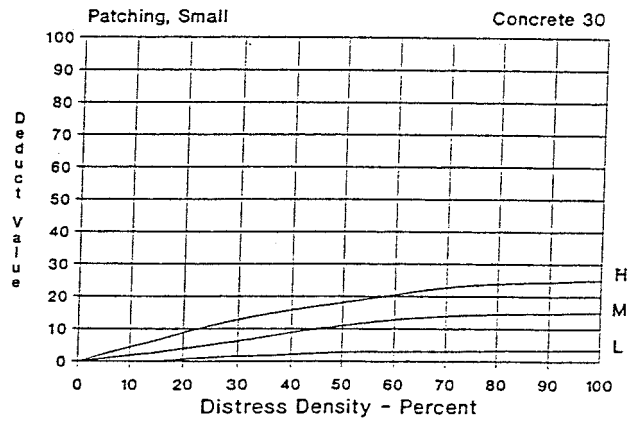


FIG. X4.10 Patching, Small

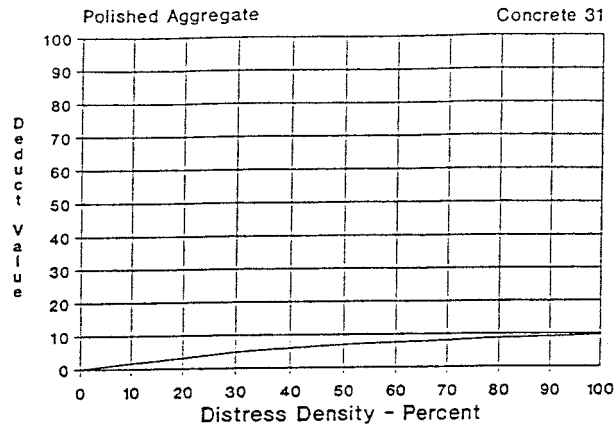


FIG. X4.11 Polished Aggregate

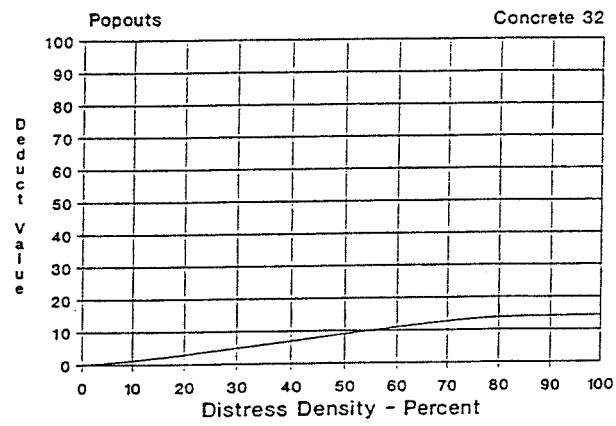


FIG. X4.12 Popouts

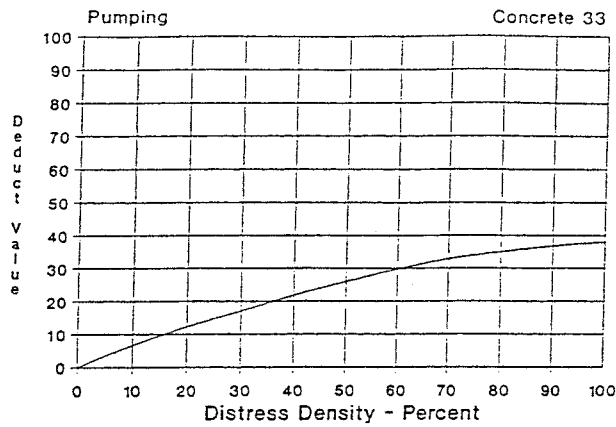


FIG. X4.13 Pumping

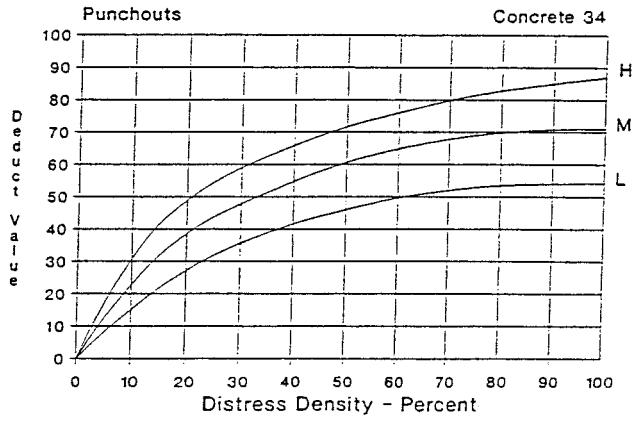


FIG. X4.14 Punchouts

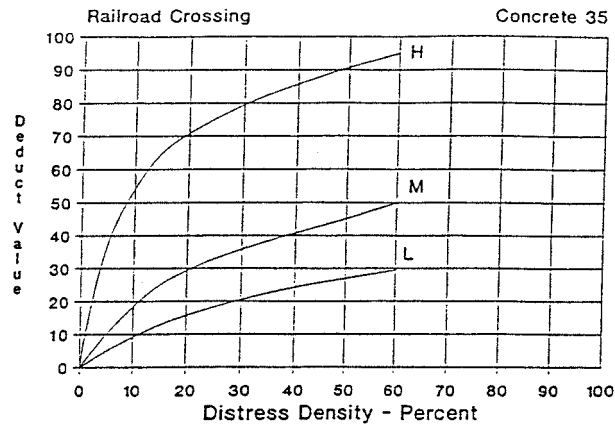


FIG. X4.15 Railroad Crossing

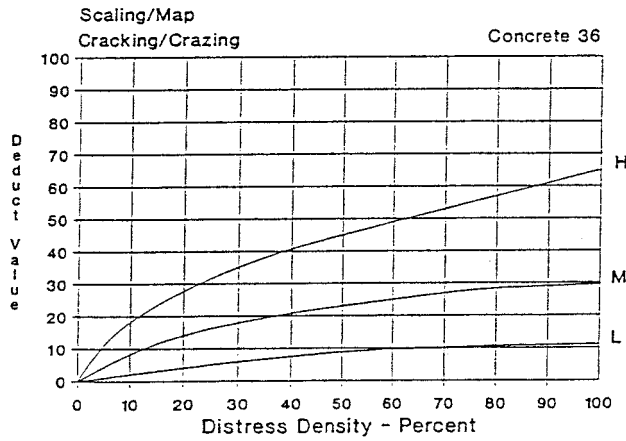


FIG. X4.16 Scaling/Map Cracking/Crazing

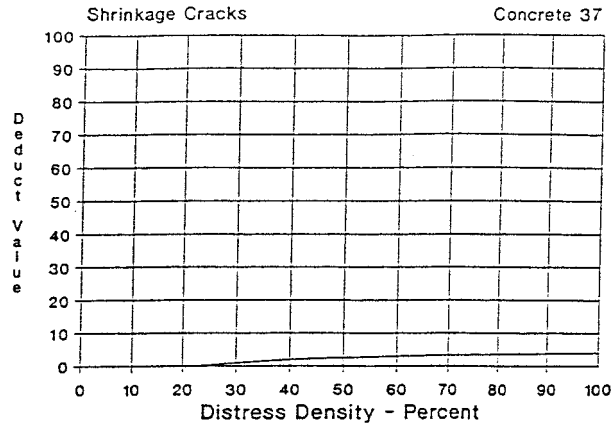


FIG. X4.17 Shrinkage Cracks

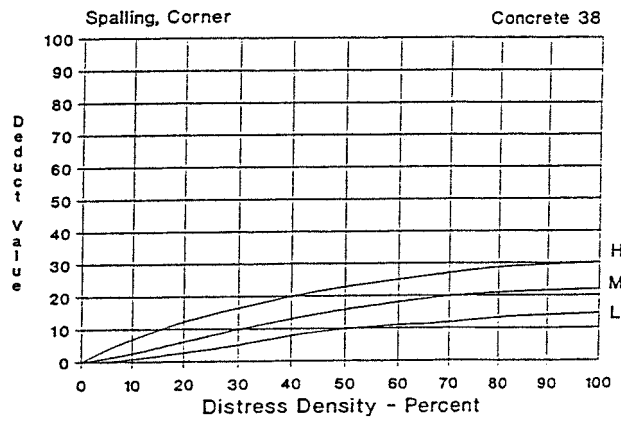


FIG. X4.18 Spalling, Corner

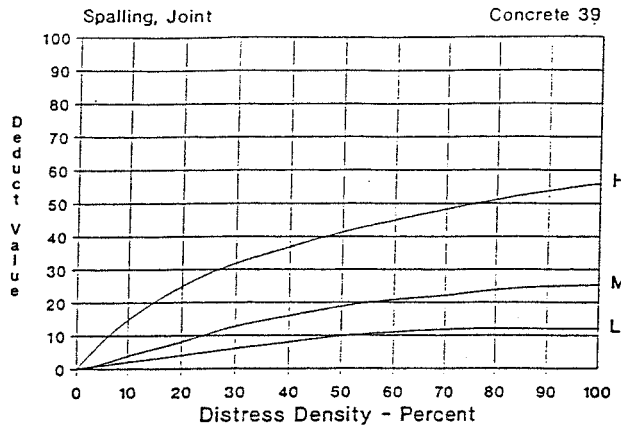
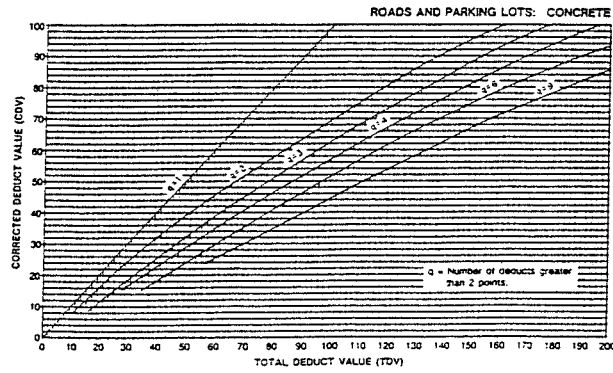


FIG. X4.19 Spalling, Joint



Corrected deduct values for jointed concrete pavement.

FIG. X4.20 Corrected Deduct Values for Jointed Concrete Pavement

ASTM International takes no position respecting the validity of any patent rights asserted in connection with any item mentioned in this standard. Users of this standard are expressly advised that determination of the validity of any such patent rights, and the risk of infringement of such rights, are entirely their own responsibility.

This standard is subject to revision at any time by the responsible technical committee and must be reviewed every five years and if not revised, either reapproved or withdrawn. Your comments are invited either for revision of this standard or for additional standards and should be addressed to ASTM International Headquarters. Your comments will receive careful consideration at a meeting of the responsible technical committee, which you may attend. If you feel that your comments have not received a fair hearing you should make your views known to the ASTM Committee on Standards, at the address shown below.

This standard is copyrighted by ASTM International, 100 Barr Harbor Drive, PO Box C700, West Conshohocken, PA 19428-2959, United States. Individual reprints (single or multiple copies) of this standard may be obtained by contacting ASTM at the above address or at 610-832-9585 (phone), 610-832-9555 (fax), or service@astm.org (e-mail); or through the ASTM website (www.astm.org).