



Standard Test Method for Identification and Classification of Dispersive Clay Soils by the Pinhole Test¹

This standard is issued under the fixed designation D 4647; the number immediately following the designation indicates the year of original adoption or, in the case of revision, the year of last revision. A number in parentheses indicates the year of last reapproval. A superscript epsilon (ε) indicates an editorial change since the last revision or reapproval.

^{ε1} NOTE—Keywords were added editorially December 1998

1. Scope

1.1 This test method presents a direct, qualitative measurement of the dispersibility and consequent colloidal erodibility of clay soils by causing water to flow through a small hole punched in a specimen. This test method is complemented by Test Method D 4221.

1.2 This test method and the criteria for evaluating test data are based upon results of several hundred tests on samples collected from embankments, channels, and other areas where clay soils have eroded or resisted erosion in nature (1).²

1.3 Three alternative procedures for classifying the dispersibility of clay soils are provided as follows:

1.3.1 Method A and Method C, adapted from Ref (1), classify soils into six categories of dispersiveness as: dispersibility (D1, D2), slight to moderately dispersive (ND4, ND3), and nondispersive (ND2, ND1).

1.3.2 Method B classifies soils into three categories of dispersiveness as: dispersibility (D), slightly dispersive (SD), and nondispersive (ND).

1.4 The values stated in SI units are to be regarded as the standard. The values given in parentheses are provided for information only.

1.5 *This standard does not purport to address all of the safety concerns, if any, associated with its use. It is the responsibility of the user of this standard to establish appropriate safety and health practices and determine the applicability of regulatory limitations prior to use.*

2. Referenced Documents

2.1 ASTM Standards:

D 422 Method for Particle Size Analysis of Soils³

D 698 Test Method for Moisture-Density Relations of Soils and Soil-Aggregate Mixtures Using a 5.5-lb (2.49-kg) Rammer and a 12-in. (305-mm) Drop³

¹ This test method is under the jurisdiction of ASTM Committee D-18 on Soil and Rock and is the direct responsibility of Subcommittee D18.06 on Physico-Chemical Properties of Soils and Rock.

Current edition approved Sept. 15, 1993. Published November 1993. Originally published as D 4647 – 87. Last previous edition D 4647 – 87.

² The boldface numbers in parentheses refer to the list of references at the end of this test method.

³ *Annual Book of ASTM Standards*, Vol 04.08.

D 2216 Method for Laboratory Determination of Water (Moisture) Content of Soil, Rock, and Soil Aggregate Mixtures³

D 2487 Test Method for Classification of Soils for Engineering Purposes³

D 2488 Practice for Description and Identification of Soils (Visual-Manual Procedure)³

D 3740 Practice for the Evaluation of Agencies in the Testing and/or Inspection of Soil and Rock as Used In Engineering Design and Construction³

D 4221 Test Method for Dispersive Characteristics of Clay Soil By Double Hydrometer³

D 4318 Test Method for Liquid Limit, Plastic Limit, and Plasticity Index of Soils³

D 4753 Specification for Evaluating, Selecting, and Specifying Balances and Scales for Use in Soil, Rock and Construction Materials Testing³

3. Terminology

3.1 Definitions of Terms Specific to This Standard:

3.1.1 *dispersive clays*—clays that disintegrate easily and rapidly in water of low-salt concentration, and without significant mechanical assistance. Such clays usually have a high proportion of their adsorptive capacity saturated with sodium cations.

3.1.1.1 *Discussion*—Such clays generally have a high shrink-swell potential, have low resistance to erosion, and have low permeability in an intact state.

4. Summary of Test Method

4.1 The test method is started with distilled water flowing horizontally under a hydraulic head of 50 mm (2 in.) through a 1.0-mm (0.04-in.) diameter hole punched in the soil specimen. The nature of the solution emerging from the specimen under the initial 50-mm (2-in.) head provides the principle differentiation between dispersive and nondispersive clays. Flow from dispersive clays will be distinctly dark and the hole through the specimen will enlarge rapidly, with a resultant increase in the flow rate. Flow from slightly to moderately dispersive clays will be slightly dark with a constant hole size and flow rate. Flow from nondispersive clays will be completely clear with no measurable increase in the hole size.

4.2 Test results are evaluated from the appearance of the flowing solution emerging from the specimen, the rate of flow, and the final size of the hole through the specimen. These observations provide the basis for classifying the soil specimen.

5. Significance and Use

5.1 The pinhole test provides one method of identifying the dispersive characteristics of clay soils that are to be or have been used in earth construction. The piping failures of a number of homogeneous earth dams, erosion along channel or canal banks, and rainfall erosion of earthen structures have been attributed to the colloidal erosion along cracks or other flow channels formed in masses of dispersive clay (2).

5.2 This test method models the action of water flowing along a crack in an earth embankment. Other indirect tests, such as the double hydrometer test (Test Method D 4221), the crumb test (3, 4), that relates the turbidity of a cloud of suspended clay colloids as an indicator of the clay dispersivity, and chemical tests that relate the percentage of sodium to total soluble salt content of the soil are also used as indicator tests of clay dispersibility (2). The comparison of results from the pinhole test and other indirect tests on hundreds of samples indicates that the results of the pinhole test have the best correlation with the erosional performance of clay soils in nature.

5.3 Method A and Method C of the pinhole test require the evaluation of cloudiness of effluent, final size of the pinhole, and computation of flow rates through the pinhole in order to classify the dispersive characteristics of the soil. Method B requires only the evaluation of the cloudiness of effluent and final size of the pinhole to classify the dispersive characteristics of the soil. The computation of flow rates through the pinhole in Method A serves primarily as a guide to the proper equipment and specimen performance under sequential pressures applied during the test. All methods produce similar results and any method can be used to identify dispersive clays.

5.4 The use of Method A or Method C results in the accumulation of data relative to sequential flow rates through the pinhole and consequent enlargement or erosion of the hole. The pinhole erosion test was developed for the purpose of identifying dispersive soils and is not intended to be a geometrically scaled model of a prototype structure. Since the theory of similitude was not used in the design of the pinhole test, quantitative data are not obtained. The quantity of flow through the pinhole, amount of soil erosion, or the rate of soil erosion should not be extrapolated to actual field conditions (3). However, such data may be useful in performing qualitative evaluations of the consequences of such erosion in terms of dam failure, loss of life and property. They also may be used in considering the cost effectiveness of defensive design measures necessary to minimize the effects of failure due to dispersive clays. For example, the amount of colloidal erosion that will occur in a soil classed as ND2 (very slightly dispersive) will be very small for a relatively long period of time. Such erosion may not be significant in evaluating the cost-benefit relationships in projects where public safety is not involved or where normal maintenance procedures will handle the problem. In such cases, classifying the soil as ND (nondis-

persive) using Method B of the pinhole test should be adequate.

5.5 Pinhole tests that result in classifying soil as slightly dispersive (ND3 by Method A or Method C or SD by Method B) indicate high uncertainty about the existence of significant problems to be considered in the design or stability of a structure. In such cases, it is advisable to resample and test a number of other soils from the same area to generate an adequate statistical sample for problem evaluation. The original slightly dispersive sample may come from an area on the edge of a more highly dispersive soil.

5.6 In a few physiographic areas or geoclimatic conditions, or both, neither the pinhole test nor the other indicator tests provide consistent identification of dispersive clays (5, 6, 7). In such cases, the results of the tests (8, 9) should be evaluated in terms of cost effectiveness and design judgment (7).

5.7 For some projects, it may be desirable to perform the pinhole test using eroding fluids other than distilled water (8, 10). In such cases, Method A, Method B, or Method C may be used to identify the dispersive characteristics of the soil and compare the results with those obtained using distilled water.

NOTE 1—Notwithstanding the statement on precision and bias contained in this test method: The precision of this test method is dependent on the competence of the personnel performing it, and the suitability of the equipment and facilities used. Agencies which meet the criteria of Practice D 3740 are generally considered capable of competent and objective testing. Users of this test method are cautioned that compliance with Practice D 3740 does not in itself assure reliable testing. Reliable testing depends on several factors; Practice D 3740 provides a means of evaluating some of those factors.

6. Limitations

6.1 Development of the test procedure to provide reproducible results that differentiate between clay soils that were known to be erodible (dispersive) and nonerodible (nondispersive) in the field indicates the following limitations in the use of this test:

6.1.1 This test method is not applicable to soils with less than 12 % fraction finer than 0.005 mm and with a plasticity index less than or equal to 4 (2, 11). Such soils generally have low resistance to erosion regardless of dispersive characteristics.

6.1.2 The most consistent results are produced when the natural water content of the sample is preserved during the sampling, shipping, storage, and testing operations.

6.1.3 A few instances have been reported in which the pinhole test did not identify some dispersive clays in which the pore water contained less than 0.4 meq/L total soluble salts that were more than 80 % sodium salts.

6.1.4 This test method was developed to test specimens of disturbed soil that are compacted into the test cylinder. This test method also can be used to test undisturbed specimens when they are properly trimmed and sealed into the test cylinder; however, some investigators (6) have found that this test method is not applicable in evaluating the dispersive characteristics of undisturbed samples of highly sensitive clays. Such clays may be classed as dispersive from the pinhole test results but perform as nondispersive materials in nature.

6.1.5 This test method is performed with distilled water, at

a pH of 5.5 to 7.0, as the eroding fluid. The use of water with various ionic concentrations and combinations will alter the results of the test (8, 10).

7. Classification

7.1 The observations of this test method provide the basis for classifying the soil specimen into a category of dispersiveness according to the following general criteria:

7.1.1 Method A:

D1, D2—Dispersive clays that fail rapidly under 50-mm (2-in.) head.

ND4, ND3—Slightly to moderately dispersive clays that erode slowly under 50-mm (2-in.) or 180-mm (7-in.) head.

ND2, ND1—Nondispersive clay with very slight to no colloidal erosion under 380-mm (15-in.) or 1020-mm (40-in.) head.

7.1.2 Method B:

D—Dispersive clays that erode rapidly under 50-mm (2-in.) head.

SD—Slightly dispersive clays that erode slowly under 180-mm (7-in.) head.

ND—Nondispersive clays that show very slight or no colloidal erosion under 380-mm (15-in.) head.

NOTE 2—Method B for classifying dispersiveness of clay soils combines the categories of Method A as follows: D = D1, D2, ND4; SD = ND3; and ND = ND2, ND1.

7.1.3 Method C:

D1, D2—Dispersive clays that fail rapidly under 50-mm (2-in.) head.

ND4, ND3—Dispersive clays that erode slowly under 50-mm (2-in.), 180-mm (7-in.), or 380-mm (15-in.) head.

ND2, ND1—Nondispersive clay with very slight to no colloidal erosion under 380-mm (15-in.) head.

8. Apparatus

8.1 Pinhole Test Apparatus—Typical pinhole test apparatus is shown in Fig. 1, Fig. 2, and Fig. 3. Various other types and

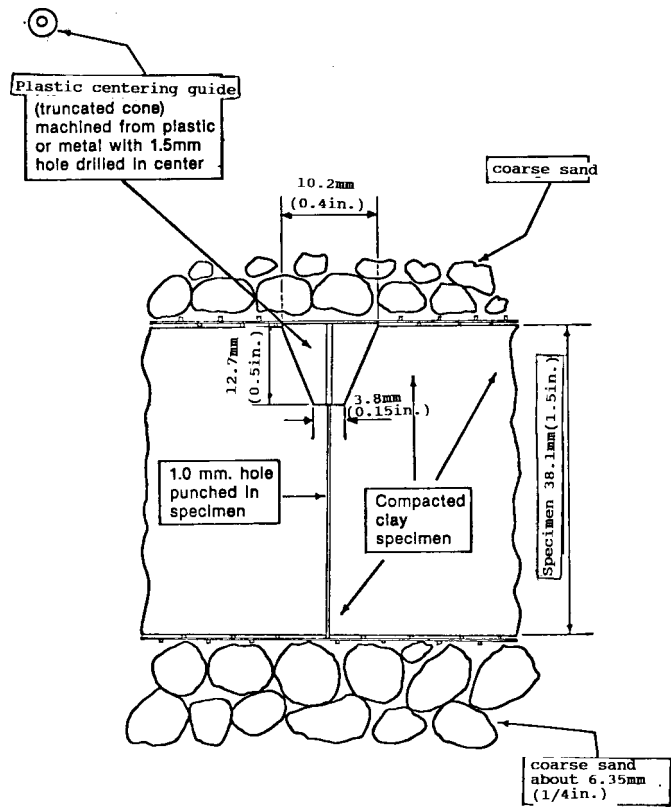


FIG. 2 Schematic Drawing of Pinhole Test Specimen

sizes of specimen molds or containers and top and base plates may be used provided the test specimen is 38 mm (1.5 in.) long, the pinhole is 1.0 mm (0.04 in.) in diameter, and the hole through the truncated cone centering guide or other centering device is 1.5 mm (0.059 in.) in diameter.

8.1.1 It is important that the outlet drain be large enough to accommodate the maximum inflow without creating a partial vacuum in the system. Partial vacuum may develop when small diameter outlet drains flow at full capacity and when long

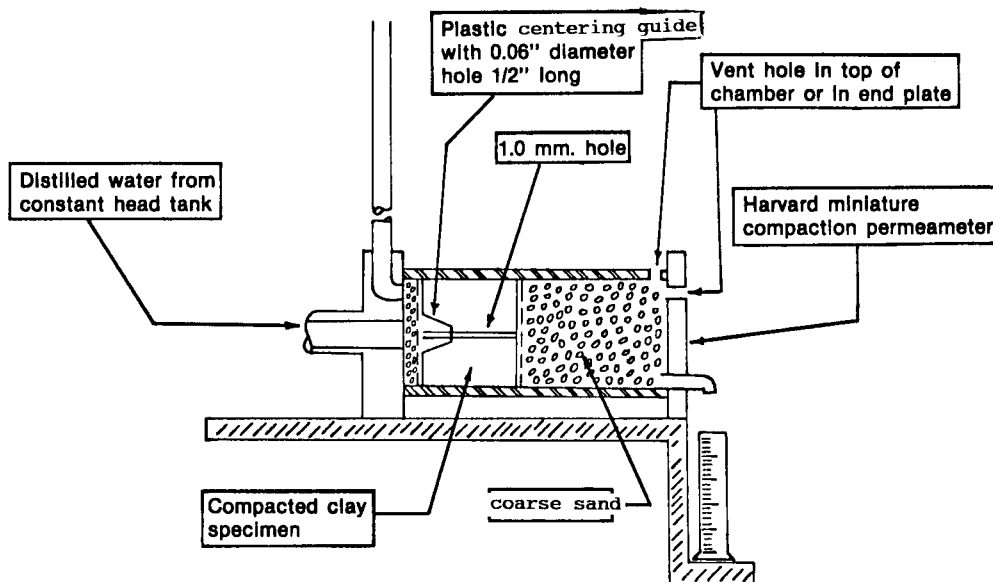


FIG. 1 Schematic Drawing of the Pinhole Test Equipment

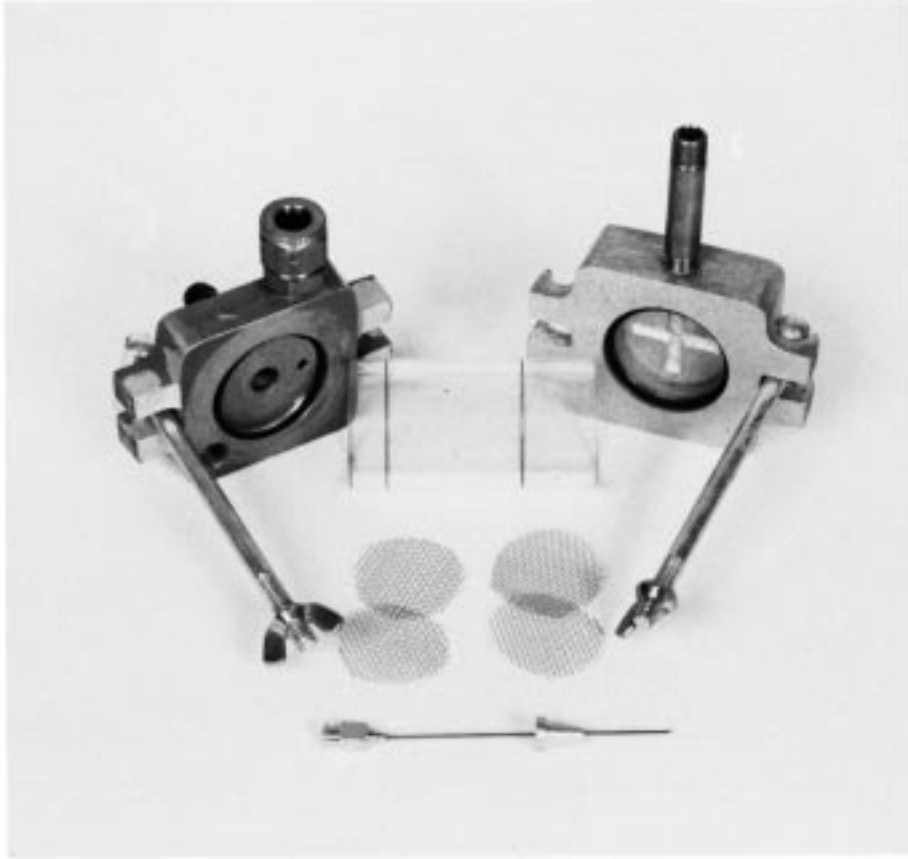


FIG. 3 Pinhole Test Mold, Screens, Nipple, and Needle

segments of flexible tubing are attached to the outflow pipe.

8.1.2 The development of partial vacuum in the system produces hydraulic heads greater than those specified for the test in Section 10 and following.

8.1.3 The installation of a 1.6-mm ($\frac{1}{16}$ -in.) to 3-mm ($\frac{1}{8}$ -in.) diameter breather hole in the center of the base plate, as shown in Fig. 1, generally assures discharge from the system at atmospheric pressure without partial vacuum.

8.2 *Constant Head Tank*, to supply distilled water with a pH of 5.5 to 7.0.

8.3 *Graduated Cylinders*, of 10, 25, 50, and 100-mL capacity.

8.4 *Wire Screen*, with holes smaller than 2 mm (0.08 in.), cut in circular shape to fit inside the specimen tube.

8.5 *Wire Punch*, 1.0 mm (0.039 in.) in diameter by 50 to 75-mm (2.5 to 3-in.) punch. (No. 19 veterinarian hypodermic needle or 1-mm drill bit or stiff wire length.)

8.6 *Centering Guide*—Truncated cone centering guide with 1.5-mm (0.059-in.) diameter hole (plastic, brass, steel, or other suitable material).

8.7 *Coarse Sand*, that has been washed and sieved through No. 10 to $\frac{1}{4}$ -in. sieves (2 to 6 mm in diameter).

8.8 *Stop Watch*, reading to 0.1 s.

8.9 *Manometer*, pressure transducer, standpipe, or similar device to measure hydraulic head to within 5 % of value.

8.10 *Compaction Equipment*, Harvard miniature compaction apparatus or similar device to compact the specimen into

the pinhole test cylinder.

8.11 *Balance*, meeting the requirements of Class GP2 in Specification D 4753.

9. Preparation of Samples

9.1 *Disturbed Soil at Natural Water Content:*

9.1.1 Remove from the sample all sand and gravel particles larger than 2 mm (No. 10 sieve) in diameter.

NOTE 3—This sieving process generally involves hand forcing materials through the No. 10 sieve. Separation on a finer screen may be necessary if medium sand particles tend to clog the pinhole.

9.1.2 Determine the water content using procedures in Test Method D 2216, and adjust the moisture by adding distilled water or air drying to within two percentage points of the water content for compaction to be used in construction.

9.2 *Disturbed Soil, Pulverized and Air-Dried:*

9.2.1 Remove all sand and gravel particles larger than 2-mm (No. 10) sieve.

9.2.2 Add distilled water to bring the soil to within 2 percentage points of the specified water content for compaction to be used in construction.

9.2.3 Compact the soil using equipment and procedures of Test Method D 698.

9.2.4 Extrude the compacted specimen from the compaction mold and store the compacted specimen in moisture-proof containers (plastic bags) for a period of 24 to 48 h prior to performing the pinhole test. (The specimen may be compacted

and stored for curing in the test cylinder sealed in plastic to maintain water content.)

9.2.5 The cylinder of compacted soil should be broken up and screened through a 2-mm (No. 10) sieve prior to proceeding with the preparation of the pinhole specimen as described in 10.1.1.

NOTE 4—The compaction and rescreening of the disturbed soil has been found effective in facilitating the even distribution of water content through the specimen. Other methods may be used provided the water content is uniformly distributed.

9.3 Undisturbed (Core or Block) Specimens:

9.3.1 Trim or cut a specimen 38-mm (1.5-in.) long to fit snugly in the test cylinder and position the specimen on top of the screens and pea gravel as shown in Fig. 1.

9.3.2 Seal the perimeter of the top of the specimen with molding clay or other waterproof sealant to prevent flow of water between the specimen and the wall of the test cylinder.

9.4 Use of Larger Test Specimens:

9.4.1 The procedures and interpretations in this test method were developed using the apparatus and dimensions listed in Section 8. Results using larger test specimens (either compacted, remolded, or undisturbed) should be correlated and compared with the results obtained using this test method to ascertain their validity. ASTM Committee D 18 is unaware of any published documentation on the use of test specimens with dimensions different from those specified in this test method.

10. Method A Procedure

10.1 Compacted Specimen:

10.1.1 Compact the 38-mm (1.5-in.) long specimen into the pinhole test cylinder on top of the coarse sand and wire screen, which have been previously placed in the cylinder.

10.1.1.1 The dry unit weight and water content of the compacted specimen should correspond to those specified for the proposed earth construction.

10.1.1.2 When using the Harvard compaction and permeability equipment (1, 14), approximately 95 % of maximum standard (Test Method D 698) dry unit weight can be achieved by compacting the specimen in five lifts with 16 tamps on each lift using a 6.8-kg (15-lb) spring on the Harvard compaction test tamper.

10.1.2 Insert the truncated cone centering guide with the 1.5-mm (0.059-in.) diameter hole into the center of the top of the specimen using finger pressure.

NOTE 5—Care should be taken to ensure that the nipple is inserted vertically with the top of the nipple flush with the top of the soil specimen so that the pinhole is normal to the specimen surface.

10.1.3 Insert the 1.0-mm (0.039-in.) diameter wire punch into the centering guide and punch or force it through the soil specimen. Force the punch in a continuous motion through the soil specimen; it then should penetrate into the underlying sand.

NOTE 6—Care should be taken to ensure that the punch completely penetrates through the soil specimen and 6 to 10 mm (0.24 to 0.4 in.) into the coarse sand under the specimen and screens. A few rotations of the punch after it has passed through the soil specimen will assist penetration through the screen and into the sand.

10.1.4 Remove the wire or punch from the specimen.

NOTE 7—Rotating the punch four or five times during the extraction operation generally assures a clean, open hole through the specimen.

10.1.5 Carefully place the wire screen on top of the specimen (with centering guide in place) and fill the remaining void in the top of the test cylinder with coarse sand.

NOTE 8—The sand should be carefully screened and leveled across the top of the cylinder so a watertight seal can be provided between the test cylinder and the test plate.

NOTE 9—If the pinhole centering guide is included as an integral part of the cylinder head plate, the truncated cone centering guide (10.1.2) and the top screen and gravel (10.1.5) can be eliminated (12, 13).

10.1.6 Assemble the top plate; connect the head (distilled water) source, and the head measuring device (standpipe or manometer). Place assembled apparatus in horizontal position as shown in Fig. 1.

NOTE 10—At this stage of the test, the valve for the head source should be closed and the valve for the head measuring device should be open (if valves are used).

10.1.7 Start the test by introducing distilled water into the apparatus so that a hydraulic head at the level of the pinhole is 50 mm (2 in.).

NOTE 11—If flexible tubing is used to connect either the apparatus with the water source or to the head measuring device, care should be taken to ensure that all air bubbles are expelled from the water supply and head measuring tubes when the test is started.

10.1.8 Record the time at start of test (or start the stopwatch).

10.1.9 With an appropriate graduated cylinder, begin measuring the quantity of effluent flow as it emerges from the specimen. If no flow occurs when the test is started, stop the test, dismantle the top of the apparatus, and repunch the hole (or seal the first hole and punch a new hole).

10.1.9.1 The first two or three measurements of discharge should be made in units of the time in seconds required to collect 10 mL of effluent. Subsequent measurements may consist of recording the time interval required to collect 25, 50, or 100 mL of effluent.

10.1.9.2 It is also acceptable to select a time interval, such as 60 s, and measure the volume of effluent collected during that interval. This method allows sufficient sensitivity to determine the rate of change of flow rates and observation of hydraulic capacity (example, constant flow rate).

10.1.10 Observe the cloudiness of the effluent for each measured discharge by looking both through the side of the cylinder and vertically through the column of fluid in the cylinder. Record the cloudiness of the effluent in the cylinder as very dark, dark, moderately dark, slightly dark, barely visible, or completely clear.

10.1.11 Continue the test under the 50-mm (2-in.) head for 5 min. If, at the end of 5 min, the effluent is very dark and flow rates have gradually increased to 1.0 to 1.4 mL/s, the test is complete.

10.1.12 Dismantle the apparatus and extrude the soil specimen from the cylinder. Break or cut open the specimen, transversely and longitudinally, and measure the size of the hole by comparing against the needle used to punch the hole.

10.1.13 If the final hole size is greater than twice the needle punch diameter, classify the soil as highly dispersive, D1.

Otherwise, the flow rate and hole size are inconsistent and the test should be done again.

NOTE 12—Extensive experimental data (12) indicate that the hydraulic capacity of the system using a nipple with a diameter equal to 1.5 mm (0.06 in.) is 1.2 to 1.3 mL/s under a 50-mm hydraulic head. If flow rates exceed these amounts, the outlet system is operating under a partial vacuum or the initial head reading is higher than 50 mm.

10.1.14 If the effluent from the 50-mm (2-in.) head is distinctly dark and the flow rate does not exceed 1.0 mL/s at the end of 5 min, continue the test an additional 5 min for a total of 10 min. At the end of 10 min, if the effluent is still dark, stop the test and determine the hole size. Classify the soil as dispersive D2 if the final flow rate is 1.0 to 1.30-mm (2-in.) head is clear or is very slightly dark at the end of 10 min and the flow rate is 0.40 to 0.80 mL/s, raise the head to 180 mm (7 in.). Under the 180-mm head, if the effluent is distinctly dark and the rate of flow has increased rapidly to 1.4 to 2.7 mL/s, stop the test and examine the hole diameter. If the hole diameter is equal to or greater than 1.5 to 2 needle diameters, classify the soil as slightly to moderately dispersive, ND3.

10.1.15 If the effluent under the 50-mm (2-in.) head is clear or is very slightly dark at the end of 10 min and the flow rate is 0.40 to 0.80 mL/s, raise the head to 180 mm (7 in.). Under

the 180-mm head, if the effluent is distinctly dark and the rate of flow has increased rapidly to 1.4 to 2.7 mL/s, stop the test and examine the hole diameter. If the hole diameter is equal to or greater than 1.5 to 2 needle diameters, classify the soil as slightly to moderately dispersive, ND3.

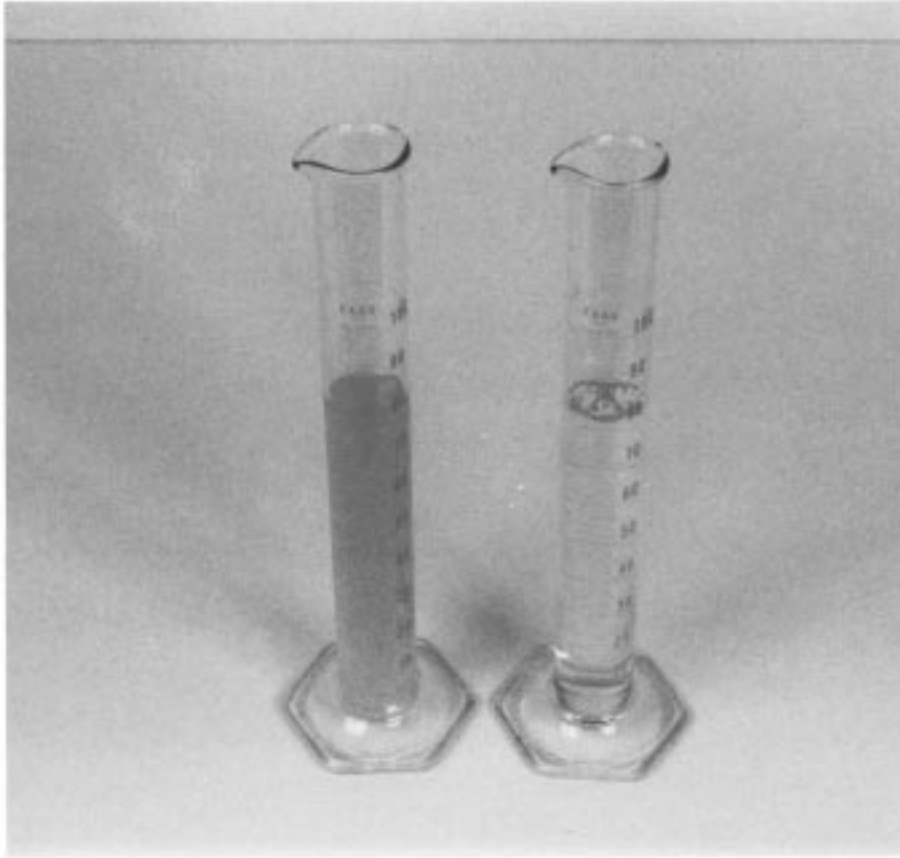
10.1.16 If the flow under the 180-mm head continues to flow completely clear or has particles that are barely visible after 5 min and the flow rate is 0.8 to 1.4 mL/s, raise the head to 380-mm (15-in.) After 5 min under the 380-mm head, if the flow has increased darkness or the flow rate has increased to 1.8 to 3.2 mL/s, stop the test and classify the soil as slightly dispersive, ND3.

10.1.17 If, after 5 min, the flow under the 380-mm (15-in.) head is completely clear and the flow rate is 1.0 to 1.8 mL/s, raise the head to 1020-mm (40-in.). If the flow under 1020-mm head after 5 min has a very slight (trace) darkness from the top of the cylinder or the flow rate exceeds 3.0 mL/s, classify the soil as nondispersive, ND2. Otherwise classify the soil as nondispersive, ND1. The flow rate for ND1 soils under 1020-mm head will generally be less than 3.0 mL/s and the size of the hole at the end of the test should not be measurably larger than the needle punch.



NOTE 1—Specimen on right shows typical enlargement of hole in dispersive clay after 5-min flow at 50-mm head. Specimen on left shows no discernible erosion in a nondispersive clay tested under a 1020-mm head.

FIG. 4 Appearance of Typical Clay Pinhole Specimens After Completion of Test



NOTE 1—Comparison of cloudy colloidal appearance of water flowing through dispersive clay specimen (left cylinder) with perfectly clear water from a nondispersive clay specimen (right cylinder).

FIG. 5 Comparison of Appearance

NOTE 13—Testing under the 1020-mm (40-in.) head is optional and probably will not be required for most projects.

10.1.18 A suggested form for recording data for the pinhole test and typical test results are shown in Fig. 6 and Fig. 7.

10.2 Undisturbed Samples:

10.2.1 The test procedure for undisturbed samples is the same as that for compacted specimens, 10.1.2-10.1.17.

NOTE 14—For some stiff undisturbed specimens, insertion of the truncated cone guide nipple may be very difficult and result in damage to the specimen. In these special cases, the nipple may be omitted. However, extreme care is needed to maintain alignment when punching the hole without the nipple. In addition, the entry and flow hydraulics could be altered to such an extent that the evaluation of the criteria in Table 1 becomes invalid. If no guide nipple is used, the report should contain a statement to this effect.

10.2.2 It is important to recognize that the flow rates and the final cross-sectional area and shape of the holes through specimens of undisturbed samples may vary considerably from those observed in compacted specimens. The macrostructure (stratification, irregular or abnormal voids, and greater inhomogeneity) of soils, particularly alluvial soils, may influence the rate and nature of erosion along the hole through the specimen as much as or more than the presence of dispersive clays.

11. Method B Procedure

11.1 The test procedures for Method B are the same as for Method A, 10.1 and 10.2, except for the following modifications in the criteria for classifying the dispersive characteristics of the specimen:

11.1.1 Soils that produce a moderately dark or darker effluent and a hole size larger than 1.5 needle punch diameters under the 50-mm (2-in.) head are classified as dispersive, D.

11.1.2 Soils that produce a slightly dark effluent and a hole size equal to or greater than 1.5 needle diameters under a 180-mm (7-in.) or 380-mm (15-in.) head are classified as slightly dispersive, SD.

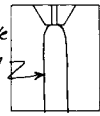
11.1.3 Soils that produce no cloudiness or an effluent with particles barely visible and less than 1.5 needle diameter hole size increase under a 380-mm (15-in.) head are classified as nondispersive, ND.

NOTE 15—Precautions relative to effluent discharge conditions presented in 8.1.1 to 8.1.3 apply to both methods.

12. Method C Procedure

12.1 The test procedure for Method C is the same as for Method A, 10.1 and 10.2 except for the following modifications in the criteria for classifying the dispersive characteristics of the specimen:

Sample No. F85-1647 Specimen after test
 Compaction Characteristics Good
 Water Content 20% Final hole 2.5-3.0mm
 Distilled water added: Yes or No Date 2-6-85
 Curing Time None Page 1
 State Anywhere By rs
 Project Earth Dam Site No. 16 Flow started on 1 trial



Clock Time	Head	Flow		Flow Rate ml/s	Turbidity from Side						Remarks	
		ml.	sec.		Very Dark	Dark	Moderately Dark	Slightly Dark	Barely Visible	Completely Clear		
												Flow Rate ml/s
1400	2"	10	25	0.4		✓						
		10	10	1.0	✓							
		25	10	1.25	✓							Few particles falling
		25	19	1.3	✓							
		25	19	1.3	✓							
		25	19	1.3	✓							Many particles falling
1403		50	39	1.3	✓						Stop test	
												Classification = D1 or D

FIG. 6 Typical Data for a Dispersive Clay

12.1.1 Soils that produce a moderately dark effluent and a flow rate of 2.0 to 2.8 mL/s under 180-mm (7-in.) head for 5 min are classified as ND4.

12.1.2 Soils that produce a slightly dark to clear effluent and a flow rate of 2.4 to 3.2 mL/s under the 380-mm (15-in.) head for 5 min are classified as ND3.

12.1.3 Soils that produce a slightly dark to clear effluent and a flow rate of 1.6 to 2.4 mL/s under the 380-mm (15-in.) head for 5 min are classified as ND2.

12.1.4 Soils that produce a completely clear effluent and a flow rate of 1.8 to 1.6 mL/s under the 380-mm (15-in.) head for 5 min are classified as ND1.

13. Evaluating Test Results

13.1 The criteria for evaluating results of the pinhole test are summarized in Table 1.

13.2 Observe and record the size and shape of the hole through the specimen at the end of the test as shown in Fig. 6 and Fig. 7.

13.3 In evaluating test results from undisturbed samples, the cloudiness of the effluent emerging from the specimen may be more important than the rate of flow. It is also important that characteristics of the hole at the end of the test be carefully observed and recorded. Due to the inhomogeneous nature of the vertical profile of many soils, it is possible to have practically all of the colloidal (dispersive) erosion develop in

one or more small areas along the hole through an undisturbed sample.

14. Report

14.1 Report the following information for the pinhole test for dispersive clay:

14.1.1 Name and location of project.

14.1.2 Location, depth, kind, color, and purpose of sample tested, such as: test hole No. 1, 0.9 to 1.8 m (3 to 6 ft) deep, disturbed clay, embankment borrow area; or test hole No. 5, 2.4 to 2.7 m (8 to 9 ft) deep, undisturbed brown silty clay, proposed flow line of channel station 9+00.

14.1.3 Engineering classification in accordance with Test Method D 2487 or Practice D 2488 (including gradation using Test Method D 422 and Atterberg limits, using Test Method D 4318, if available) of the sample from which the test specimen was obtained and the approximate percentage of coarse material (larger than 2 mm (0.08 in.) or No. 10 sieve) removed from the test specimen, if applicable.

14.1.4 Water content of the sample prior to specimen preparation.

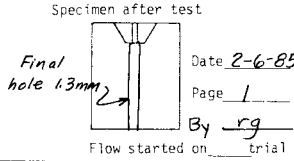
14.1.5 Curing time, if applicable.

14.1.6 Degree of compaction of the test specimen, as 95 % of maximum density in accordance with Test Method D 698.

14.1.7 Water content of the test specimen.

14.1.8 Specimen dry unit weight (if determined).

Sample No. F85-1641 Specimen after test
 Compaction Characteristics Good
 Water Content 20%
 Distilled water added: Yes or No
 Curing Time None
 State Anywhere
 Project Earth Dam Site No. 16
 Date 2-6-85
 Page 1
 By rg
 Flow started on trial



Clock Time	Head	Flow		Flow Rate ml/s	Turbidity from Side						Remarks	
		ml.	sec.		Very Dark	Dark	Moderately Dark	Slightly Dark	Barely Visible	Completely Clear		Completely Clear from Top
1030	2"	10	28	0.35						✓	✓	
1031		10	28	0.35						✓	✓	
1035		25	62	0.42						✓	✓	
1040		25	62	0.40						✓	✓	
1041	7"	25	28	0.9						✓	✓	
1042		25	28	0.9						✓	✓	
1043		25	25	1.0						✓	✓	
1045		25	25	1.0						✓	✓	
1046	15"	50	30	1.66						✓	✓	(Note: Stop test at 15" head in Method B)
1047		50	30	1.66						✓	✓	
1048		50	28	1.8						✓	✓	
1050		50	28	1.8						✓	✓	
1051	40"	50	16	3.1						✓	✓	
1052		100	31	3.2						✓	✓	
1053		100	31	3.2						✓	✓	
		100	30	3.3						✓	✓	
1055		100	30	3.3						✓	✓	
												Classification = ND 2 or ND

FIG. 7 Typical Data for a Nondispersive Clay

TABLE 1 Criteria for Evaluating Pinhole Test Results^A

Dispersive Classification ^B	Head, mm	Test time for given head, min.	Final flow rate through specimen, mL/s	Cloudiness of flow at end of test		Hole size after test, mm
				from side	from top	
D1	50	5	1.0-1.4	dark	very dark	≥2.0
D2	50	10	1.0-1.4	moderately dark	dark	>1.5
ND4	50	10	0.8-1.0	slightly dark	moderately dark	≤1.5
ND3	180	5	1.4-2.7	barely visible	slightly dark	≥1.5
	380	5	1.8-3.2			
ND2	1020	5	>3.0	clear	barely	<1.5
ND1	1020	5	≤3.0	perfectly clear	perfectly clear	1.0
Method B						
D	50	10	...	slightly dark to dark	very dark to moderately dark	≥1.5
SD	180-380	5	...	barely visible	slightly dark	≥1.5
ND	380	5	...	clear	barely visible to clear	<1.5

^AFor criteria for Method C, see Fig. 8.

^BCriteria for Method A adapted from the work by Wilson (14).

^CDispersive—D1, D2.

Moderately to Slightly Dispersive—ND4, ND3.

Nondispersive—ND2, ND1.

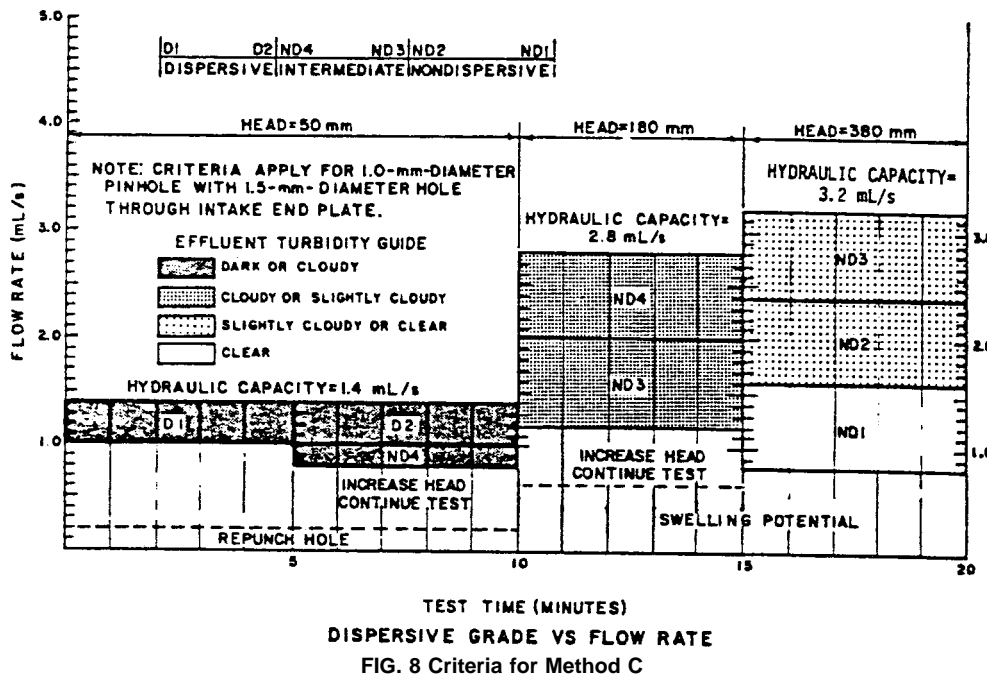
14.1.9 Type of pinhole test: Method A, Method B, or Method C.

14.1.10 Hydraulic head in millimetres (inches) rate of flow in millilitres per second, and cloudiness of flow at end of test, length of test, and description of the diameter and shape of the hole through the test specimen relative to the needle punch at the end of the test.

14.1.11 Dispersive classification of test specimen, as: D1, D2, ND4, ND3, ND2, ND1 by Method A or Method C; or D, SD, ND by Method B.

14.1.12 Chemical characteristics and head versus time sequence for the eroding fluid (distilled water or otherwise).

14.1.13 Date of test and name of operator performing the test.



15. Precision and Bias

15.1 This is a qualitative test method so a statement of precision and bias is not possible.

16. Keywords

16.1 clay; clay (dispersive); colloidal erodibility; dispers-

ibility; dispersivity; dispersion; dispersive clays; erosion; pin-hole; soils

REFERENCES

- (1) Sherard, J. L., et. al., "Pinhole Test for Identifying Dispersive Soils," *J. Geotech. Eng. Div.*, ASCE, Vol 102, No. GT-1, 1976, pp. 69-85.
- (2) Sherard, J. L., et. al., "Identification and Nature of Dispersive Soils," *J. Geotech. Eng. Div.*, ASCE, Vol 102, No. GT-4, 1976, pp. 287-301.
- (3) Holmgram, G. C. S., and Flanagan, C. P., "Factors Affecting Spontaneous Dispersion of Soil Materials as Evidenced by the Crumb Test," *Symposium on Dispersive Clays, Related Piping, and Erosion in Geotechnical Projects, ASTM STP 623*, ASTM, 1977, p. 218-239.
- (4) Emerson, W. W., "A Classification of Soil Aggregates Based Upon Their Coherence in Water," *Automation Journal of Soil Research*, Vol 2, p. 211-217.
- (5) Forsythe, P., "Experiences in Identification and Treatment of Dispersive Clays in Mississippi Dams," *Symposium on Dispersive Clays, Related Piping, and Erosion in Geotechnical Projects, ASTM STP 623*, ASTM, 1977, pp. 135-155.
- (6) Dascal, O., et. al., "Erodibility Tests on a Sensitive, Cemented Marine Clay," *Symposium on Dispersive Clays, Related Piping, and Erosion in Geotechnical Projects, ASTM STP 623*, ASTM, 1977, pp. 74-93.
- (7) Ghuman, O. S., et. al., "Erosion, Corrective Maintenance, and Dispersive Clays," *Symposium on Dispersive Clays, Related Piping, and Erosion in Geotechnical Projects, ASTM STP 623*, ASTM, 1977, pp. 172-190.
- (8) Arulanandan, K., et. al., "Pore and Eroding Fluid Influences on the Surface Erosion of a Soil," *J. Geotech. Eng. Div.*, ASCE, Vol 100, No. GT-6, 1975, pp. 51-66.
- (9) Nickel, S. H., "A Rheological Approach to Dispersive Clays," *Symposium on Dispersive Clays, Related Piping, and Erosion in Geotechnical Projects, ASTM STP 623*, ASTM, 1977, pp. 303-312.
- (10) Statton, C. T., and Mitchell, J. K., "Influence of Eroding Solution Composition on Dispersive Behavior of a Compacted Shale Sample," *Symposium on Dispersive Clays, Related Piping, and Erosion in Geotechnical Projects, ASTM STP 623*, ASTM, 1977, pp. 398-407.
- (11) Ryker, N. L., "Encountering Dispersive Clays on S.C.S. Projects in Oklahoma," *Symposium on Dispersive Clays, Related Piping, and Erosion in Geotechnical Projects, ASTM STP 623*, ASTM, 1977, pp. 370-389.
- (12) Acciardi, R. G., "Quantification of Pinhole Test Equipment Hydraulic Characteristics," U. S. Bureau of Reclamation Report REC-ERC-82-15, 1982, 73 p.
- (13) Acciardi, R. G., "Improvements to USBR Pinhole Test Equipment Design and Test Result Evaluation, Dam Safety and Rehabilitation," Fourth Annual USCOLD Lecture, Phoenix, AZ, 1984, p. 6-1 to 6-88.
- (14) Wilson, S. D., "Moisture-Density Relationships of Soils Using Harvard Compaction Apparatus," *Symposium on Special Procedures for Testing Soil and Rock for Engineering Purposes*, 5th ed., ASTM STP 479, ASTM, 1970, pp. 101-103.
- (15) Perry, E. B., and Postol, G. J., "Dispersive Characteristics of Clay from Mushroom Cave, Meramec Park Lake Project, Meramec River, Missouri," *Symposium on Dispersive Clays, Related Piping, and Erosion in Geotechnical Projects, ASTM STP 623*, ASTM, 1977, pp. 313-329.

 **D 4647**

The American Society for Testing and Materials takes no position respecting the validity of any patent rights asserted in connection with any item mentioned in this standard. Users of this standard are expressly advised that determination of the validity of any such patent rights, and the risk of infringement of such rights, are entirely their own responsibility.

This standard is subject to revision at any time by the responsible technical committee and must be reviewed every five years and if not revised, either reapproved or withdrawn. Your comments are invited either for revision of this standard or for additional standards and should be addressed to ASTM Headquarters. Your comments will receive careful consideration at a meeting of the responsible technical committee, which you may attend. If you feel that your comments have not received a fair hearing you should make your views known to the ASTM Committee on Standards, at the address shown below.

This standard is copyrighted by ASTM, 100 Barr Harbor Drive, PO Box C700, West Conshohocken, PA 19428-2959, United States. Individual reprints (single or multiple copies) of this standard may be obtained by contacting ASTM at the above address or at 610-832-9585 (phone), 610-832-9555 (fax), or service@astm.org (e-mail); or through the ASTM website (www.astm.org).