

SUBMITTAL DATA: MXZ-8B48NA 4-TON MULTI-INDOOR INVERTER HEAT-PUMP SYSTEM

Job Name:	Location:	Date:
Purchaser:	Engineer:	
Submitted to:	For <input type="checkbox"/> Reference <input type="checkbox"/> Approval <input type="checkbox"/> Construction	
System Designation:	Schedule No.:	

GENERAL FEATURES

- 4-ton outdoor unit can support up to 8 indoor units when used with branch boxes
- Hand-held wireless or wired remote controller, depending on the indoor units used
- Automatic fan speed control
- Auto restart following a power outage
- Self-check function—integrated diagnostics
- Advanced microprocessor control
- Limited warranty: five years on parts and defects and seven years on compressors



Outdoor Unit: MXZ-8B48NA

OUTDOOR UNIT ACCESSORIES

- Three-port Branch Box (PAC-AKA31BC)
- Five-port Branch Box (PAC-AKA51BC)
- Air Outlet Guide (MAC-855SG)
- Distribution Pipe for Flare Connection (MSDD-50AR; necessary for installing two branch boxes)
- Distribution Pipe for Brazed Connection (MSDD-50BR; necessary for installing two branch boxes)
- 3/8" x 1/2" Port Adapter (MAC-A454JP)
- 1/2" x 3/8" Port Adapter (MAC-A455JP)
- 1/2" x 5/8" Port Adapter (MAC-A456JP)
- 1/4" x 3/8" Port Adapter (PAC-493PI)
- 3/8" x 5/8" Port Adapter (PAC-SG76RJ)

 Branch Boxes:
(At least one branch box)


Branch Box: PAC-AKA51BC



Branch Box: PAC-AKA31BC

Cooling*

 Rated Capacity (Non-ducted/Ducted) . . . 48,000 Btu/h / 48,000 Btu/h
 Total Input (Non-ducted/Ducted) 5,780 W / 6,470 W

Heating at 47°F*

 Rated Capacity (Non-ducted/Ducted) . . . 54,000 Btu/h / 54,000 Btu/h
 Total Input (Non-ducted/Ducted) 4,820 W / 5,270 W

Heating at 17°F*

 Rated Capacity (Non-ducted/Ducted) 33,000 / 34,700 Btu/h
 Total Input (Non-ducted/Ducted) 2,950 W / 3,390 W

* Rating Conditions (Cooling) - Indoor: 80°F (27°C) DB / 67°F (19°C) WB. Outdoor: 95°F (35°C) DB / 75°F (24°C) WB.
 (Heating) - Indoor: 70°F (21°C) DB / 60°F (16°C) WB. Outdoor: 47°F (8°C) DB / 43°F (6°C) WB.
 (Heating at 17°F) - Indoor: 70°F (21°C) DB / 60°F (16°C) WB. Outdoor: 17°F (-8°C) DB / 15°F (-9°C) WB.

COMPATIBLE INDOOR UNITS
Horizontal-ducted Indoor Units: SEZ-KD09,12,15,18NA4 and PEAD-A24AA4

Wall-mounted Indoor Units: MSZ-GE06, 09,12,15,18NA-8, 24NA

Wall-mounted Indoor Units: MSZ-FE09,12NA-8, 18NA

Floor-standing Indoor Units: MFZ-KA09,12,18NA

Ceiling-suspended Indoor Units: PCA-A24KA4

Ceiling-cassette Indoor Units: SLZ-KA09,12,15 and PLA-A12,18,24BA4


(For data on specific indoor units [all ducted, all non-ducted, and both ducted and non-ducted] combinations, see the Technical and Service Manuals.)

Electrical Requirements

 Power Supply 208 / 230V, 1-Phase, 60 Hz
 Recommended Fuse/Breaker Size 50 A
 MCA 32 A

Voltage

 Indoor - Outdoor S1-S2 AC 208 / 230V
 Indoor - Outdoor S2-S3 DC 12 - 24V

Operating Range

 Cooling (Outdoor) 23°F~115°F DB (-5°C~46°C DB)
 Heating (Outdoor) 5°F~70°F DB (-15°C~21°C DB)

Fan

 Type x Quantity Propeller Fan x 2
 Airflow Rate 3,530 CFM
 Motor Output 0.086 + 0.086 kW

Compressor

 Type DC Inverter-driven Scroll
 Motor Output 2.9 kW
 Lubricant FV50S

Protection Devices

 High Pressure High Pressure Switch
 Compressor Discharge Thermo / Overcurrent Detection
 Fan Motor Overheating / Voltage Protection

Sound Pressure Level (Cooling/Heating) 54 / 55 dB(A)

DIMENSIONS	INCHES / MM
W	37-7/16 / 950
D	13 + 1-3/16 / 330 + 30
H	53-3/16 / 1,350

 Weight 278 lbs. / 126 kg
 Refrigerant Type R410A
 Refrigerant Pipe Size O.D.
 Gas Side 5/8" / 15.88 mm
 Liquid Side 3/8" / 9.52 mm
 Max. Refrigerant Pipe Length 377' / 115 m
 Max. Refrigerant Pipe Height Difference
 If Indoor Unit is Above Outdoor Unit 66' / 20 m
 If Indoor Unit is Below Outdoor Unit 98' / 30 m
 Connection Method Flared

MXZ-8B48NA ENERGY EFFICIENCIES

Indoor Unit Type	SEER	EER	HSPF	COP @ 47 F	COP @ 17F
Non-ducted	15	8.3	8.7	3.32	2.3
Ducted and Non-ducted	14.85	7.85	8.8	3.16	2.24
Ducted	14.7	7.4	8.9	3	2.2

Refer to the separate submittal forms for the SEZ, PEAD, MSZ, MFZ, SLZ, and PLA Indoor Units.



MXZ-8B48NA SYSTEM DESIGN

Outdoor unit		MXZ-8B48NA	
		Rated capacity (kBTU/h) (Cooling/Heating)	48/54
		MAX. capacity (kBTU/h) (Cooling/Heating)	54/60
		6HP	
Capacity		R410A	
		Type 06 ~ Type 24	
		Number of units	
Indoor unit that can be connected	Total system wide capacity		22.2 ~ 130 % of outdoor unit MAX. Cooling capacity (12 kBTU/h ~ 70.2kBTU/h)
Branch box that can be connected	Number of units		1 ~ 2 units

Connectable indoor unit lineup			Capacity class [kBTU/h]					
Model type	Model name							
		06	09	12	15	18(17)	24	
Wall mounted	Deluxe	MSZ-FE09/12		●	●		●	
	Standard	MSZ-GE06/09/12/15/18 MSZ-GE24	●	●	●	●	●	●
Horizontal ducted	Low static pressure	SEZ-KD09/12/15/18		●	●	●	●	
	Middle static pressure	PEAD-A24AA						●
4-way ceiling cassette	Standard	PLA-A12/18/24BA SLZ-KA09/12/15		●	●	●	●	●
Floor mounted		MFZ-KA09/12/18NA		●	●		●	
Ceiling-suspended		PCA-A24KA						●

<NOTE> When connecting MSZ-FE18NA model, joint pipe is necessary for both liquid and gas pipes.

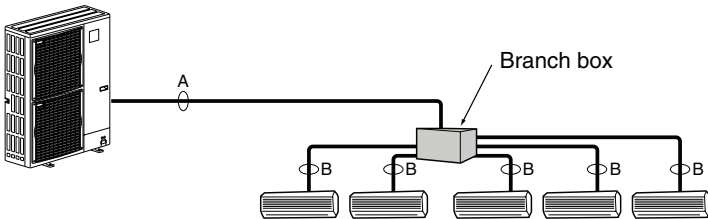
Branch box	PAC-AKA51BC	PAC-AKA31BC
Number of branches (Indoor unit that can be connected)	5 branches (MAX. 5 units)	3 branches (MAX. 3 units)

Branch Box Combinations	
Three-port	Five-port
1	0
0	1
1	1
2	0
0	2 (Up to 8 IDU)

* Max. 2 branch boxes can be connected to 1 outdoor unit.

If Using One Branch Box

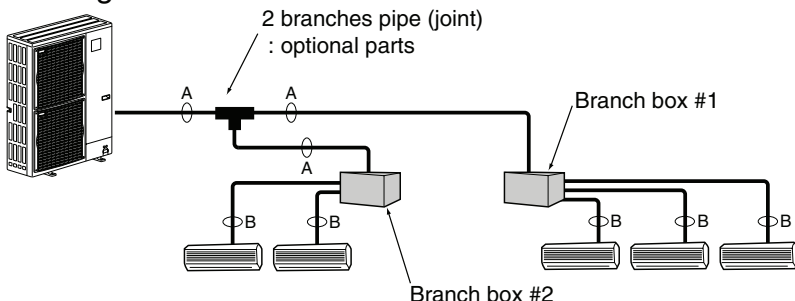
Flare Connection



Piping connection size

	A	B
Liquid	$\phi 9.52$ mm (3/8 inch)	Piping connection size depends on the type and capacity of the indoor units. Match the branch box piping connection size with the indoor unit piping connection size. If the branch box piping connection size does not match the indoor unit piping connection size, install optional port adapter on the branch box (connect port adapter directly to the branch box side).
Gas	$\phi 15.88$ mm (5/8 inch)	

If Using Two Branch Boxes



- installation procedure (2 branch pipe (joint))
Refer to the installation manuals of MSDD-50AR-E and MSDD-50BR-E.

MXZ-8B48NA OPERATION PERFORMANCE

- A minimum of two Indoor Units must be connected to the MXZ-8B48NA.
- System can operate with only one Indoor Unit turned on (see table below for single Indoor Unit performance).
- Indoor Units can be All Non-ducted, All Ducted, or a Combination of Non-ducted and Ducted (Select style as installation requires).
- Information provided at 208/230V. Refer to the MXZ Outdoor Unit Service Manual for detailed specifications and additional information per Indoor Unit Combination.

Operation Performance for Indoor Unit Combinations (Unit A + Unit B + Unit C + Unit D + Unit E + Unit F + Unit G + Unit H)	Cooling Capacity (Btu/h)									Total	Power Usage (W)
	Heating Capacity (Btu/h)										
	Unit A	Unit B	Unit C	Unit D	Unit E	Unit F	Unit G	Unit H			
6	6,000	-	-	-	-	-	-	-	-	6,000	900
	7,200	-	-	-	-	-	-	-	-	7,200	720
9	9,000	-	-	-	-	-	-	-	-	9,000	1,180
	10,900	-	-	-	-	-	-	-	-	10,900	1,100
12	12,000	-	-	-	-	-	-	-	-	12,000	1,410
	14,400	-	-	-	-	-	-	-	-	14,400	1,450
15	15,000	-	-	-	-	-	-	-	-	15,000	1,590
	18,000	-	-	-	-	-	-	-	-	18,000	1,810
18	18,000	-	-	-	-	-	-	-	-	18,000	1,780
	21,600	-	-	-	-	-	-	-	-	21,600	2,180
24	24,000	-	-	-	-	-	-	-	-	24,000	2,290
	28,800	-	-	-	-	-	-	-	-	28,800	2,960
6 + 6	6,000	6,000	-	-	-	-	-	-	-	12,000	1,410
	7,200	7,200	-	-	-	-	-	-	-	14,400	1,450
6 + 9	6,000	9,000	-	-	-	-	-	-	-	15,000	1,590
	7,200	10,900	-	-	-	-	-	-	-	18,100	1,820
6 + 12	6,000	12,000	-	-	-	-	-	-	-	18,000	1,780
	7,200	14,400	-	-	-	-	-	-	-	21,600	2,180
6 + 15	6,000	15,000	-	-	-	-	-	-	-	21,000	2,040
	7,200	18,000	-	-	-	-	-	-	-	25,200	2,570
6 + 18	6,000	18,000	-	-	-	-	-	-	-	24,000	2,290
	7,200	21,600	-	-	-	-	-	-	-	28,800	2,960
6 + 24	6,000	24,000	-	-	-	-	-	-	-	30,000	2,780
	7,200	28,800	-	-	-	-	-	-	-	36,000	3,770
9 + 9	9,000	9,000	-	-	-	-	-	-	-	18,000	1,780
	10,900	10,900	-	-	-	-	-	-	-	21,800	2,200
9 + 12	9,000	12,000	-	-	-	-	-	-	-	21,000	2,040
	10,900	14,400	-	-	-	-	-	-	-	25,300	2,580
9 + 15	9,000	15,000	-	-	-	-	-	-	-	24,000	2,290
	10,900	18,000	-	-	-	-	-	-	-	28,900	2,970
9 + 18	9,000	18,000	-	-	-	-	-	-	-	27,000	2,540
	10,900	21,600	-	-	-	-	-	-	-	32,500	3,370
9 + 24	9,000	24,000	-	-	-	-	-	-	-	33,000	3,010
	10,900	28,800	-	-	-	-	-	-	-	39,700	4,190
12 + 12	12,000	12,000	-	-	-	-	-	-	-	24,000	2,290
	14,400	14,400	-	-	-	-	-	-	-	28,800	2,960
12 + 15	12,000	15,000	-	-	-	-	-	-	-	27,000	2,540
	14,400	18,000	-	-	-	-	-	-	-	32,400	3,360
12 + 18	12,000	18,000	-	-	-	-	-	-	-	30,000	2,780
	14,400	21,600	-	-	-	-	-	-	-	36,000	3,770
12 + 24	12,000	24,000	-	-	-	-	-	-	-	36,000	3,390
	14,400	28,800	-	-	-	-	-	-	-	43,200	4,480
15 + 15	15,000	15,000	-	-	-	-	-	-	-	30,000	2,780
	18,000	18,000	-	-	-	-	-	-	-	36,000	3,770
15 + 18	15,000	18,000	-	-	-	-	-	-	-	33,000	3,010
	18,000	21,600	-	-	-	-	-	-	-	39,600	4,180
15 + 24	15,000	24,000	-	-	-	-	-	-	-	39,000	3,910
	18,000	28,800	-	-	-	-	-	-	-	46,800	4,680
18 + 18	18,000	18,000	-	-	-	-	-	-	-	36,000	3,390
	21,600	21,600	-	-	-	-	-	-	-	43,200	4,480
18 + 24	18,000	24,000	-	-	-	-	-	-	-	42,000	4,510
	21,600	28,800	-	-	-	-	-	-	-	50,400	4,870
24 + 24	24,000	24,000	-	-	-	-	-	-	-	48,000	5,900
	28,800	28,800	-	-	-	-	-	-	-	57,600	5,210
6 + 6 + 6	6,000	6,000	6,000	-	-	-	-	-	-	18,000	1,780
	7,200	7,200	7,200	-	-	-	-	-	-	21,600	2,180
6 + 6 + 9	6,000	6,000	9,000	-	-	-	-	-	-	21,000	2,040
	7,200	7,200	10,900	-	-	-	-	-	-	25,300	2,580

MXZ-8B48NA OPERATION PERFORMANCE, contd.

Operation Performance for Indoor Unit Combinations (Unit A + Unit B + Unit C + Unit D + Unit E + Unit F + Unit G + Unit H)	Cooling Capacity (Btu/h)									
	Heating Capacity (Btu/h)									
	Unit A	Unit B	Unit C	Unit D	Unit E	Unit F	Unit G	Unit H	Total	Power Usage (W)
6 + 6 + 12	6,000	6,000	12,000	-	-	-	-	-	24,000	2,290
	7,200	7,200	14,400	-	-	-	-	-	28,800	2,960
6 + 6 + 15	6,000	6,000	15,000	-	-	-	-	-	27,000	2,540
	7,200	7,200	18,000	-	-	-	-	-	32,400	3,360
6 + 6 + 18	6,000	6,000	18,000	-	-	-	-	-	30,000	2,780
	7,200	7,200	21,600	-	-	-	-	-	36,000	3,770
6 + 6 + 24	6,000	6,000	24,000	-	-	-	-	-	36,000	3,390
	7,200	7,200	28,800	-	-	-	-	-	43,200	4,480
6 + 9 + 9	6,000	9,000	9,000	-	-	-	-	-	24,000	2,290
	7,200	10,900	10,900	-	-	-	-	-	29,000	2,980
6 + 9 + 12	6,000	9,000	12,000	-	-	-	-	-	27,000	2,540
	7,200	10,900	14,400	-	-	-	-	-	32,500	3,370
6 + 9 + 15	6,000	9,000	15,000	-	-	-	-	-	30,000	2,780
	7,200	10,900	18,000	-	-	-	-	-	36,100	3,780
6 + 9 + 18	6,000	9,000	18,000	-	-	-	-	-	33,000	3,010
	7,200	10,900	21,600	-	-	-	-	-	39,700	4,190
6 + 9 + 24	6,000	9,000	24,000	-	-	-	-	-	39,000	3,910
	7,200	10,900	28,800	-	-	-	-	-	46,900	4,690
6 + 12 + 12	6,000	12,000	12,000	-	-	-	-	-	30,000	2,780
	7,200	14,400	14,400	-	-	-	-	-	36,000	3,770
6 + 12 + 15	6,000	12,000	15,000	-	-	-	-	-	33,000	3,010
	7,200	14,400	18,000	-	-	-	-	-	39,600	4,180
6 + 12 + 18	6,000	12,000	18,000	-	-	-	-	-	36,000	3,390
	7,200	14,400	21,600	-	-	-	-	-	43,200	4,480
6 + 12 + 24	6,000	12,000	24,000	-	-	-	-	-	42,000	4,510
	7,200	14,400	28,800	-	-	-	-	-	50,400	4,870
6 + 15 + 15	6,000	15,000	15,000	-	-	-	-	-	36,000	3,390
	7,200	18,000	18,000	-	-	-	-	-	43,200	4,480
6 + 15 + 18	6,000	15,000	18,000	-	-	-	-	-	39,000	3,910
	7,200	18,000	21,600	-	-	-	-	-	46,800	4,680
6 + 15 + 24	6,000	15,000	24,000	-	-	-	-	-	45,000	5,190
	7,200	18,000	28,800	-	-	-	-	-	54,000	5,050
6 + 18 + 18	6,000	18,000	18,000	-	-	-	-	-	42,000	4,510
	7,200	21,600	21,600	-	-	-	-	-	50,400	4,870
6 + 18 + 24	6,000	18,000	24,000	-	-	-	-	-	48,000	5,900
	7,200	21,600	28,800	-	-	-	-	-	57,600	5,210
6 + 24 + 24	6,000	24,000	24,000	-	-	-	-	-	54,000	5,400
	6,670	26,670	26,670	-	-	-	-	-	60,010	4,850
9 + 9 + 9	9,000	9,000	9,000	-	-	-	-	-	27,000	2,540
	10,900	10,900	10,900	-	-	-	-	-	32,700	3,390
9 + 9 + 12	9,000	9,000	12,000	-	-	-	-	-	30,000	2,780
	10,900	10,900	14,400	-	-	-	-	-	36,200	3,790
9 + 9 + 15	9,000	9,000	15,000	-	-	-	-	-	33,000	3,010
	10,900	10,900	18,000	-	-	-	-	-	39,800	4,200
9 + 9 + 18	9,000	9,000	18,000	-	-	-	-	-	36,000	3,390
	10,900	10,900	21,600	-	-	-	-	-	43,400	4,500
9 + 9 + 24	9,000	9,000	24,000	-	-	-	-	-	42,000	4,510
	10,900	10,900	28,800	-	-	-	-	-	50,600	4,890
9 + 12 + 12	9,000	12,000	12,000	-	-	-	-	-	33,000	3,010
	10,900	14,400	14,400	-	-	-	-	-	39,700	4,190
9 + 12 + 15	9,000	12,000	15,000	-	-	-	-	-	36,000	3,390
	10,900	14,400	18,000	-	-	-	-	-	43,300	4,490
9 + 12 + 18	9,000	12,000	18,000	-	-	-	-	-	39,000	3,910
	10,900	14,400	21,600	-	-	-	-	-	46,900	4,690
9 + 12 + 24	9,000	12,000	24,000	-	-	-	-	-	45,000	5,190
	10,900	14,400	28,800	-	-	-	-	-	54,100	5,060
9 + 15 + 15	9,000	15,000	15,000	-	-	-	-	-	39,000	3,910
	10,900	18,000	18,000	-	-	-	-	-	46,900	4,690
9 + 15 + 18	9,000	15,000	18,000	-	-	-	-	-	42,000	4,510
	10,900	18,000	21,600	-	-	-	-	-	50,500	4,880
9 + 15 + 24	9,000	15,000	24,000	-	-	-	-	-	48,000	5,900
	10,900	18,000	28,800	-	-	-	-	-	57,700	5,220

MXZ-8B48NA OPERATION PERFORMANCE, contd.

Operation Performance for Indoor Unit Combinations (Unit A + Unit B + Unit C + Unit D + Unit E + Unit F + Unit G + Unit H)	Cooling Capacity (Btu/h)									
	Heating Capacity (Btu/h)									
	Unit A	Unit B	Unit C	Unit D	Unit E	Unit F	Unit G	Unit H	Total	Power Usage (W)
9 + 18 + 18	9,000	18,000	18,000	-	-	-	-	-	45,000	5,190
	10,900	21,600	21,600	-	-	-	-	-	54,100	5,060
9 + 18 + 24	9,000	18,000	24,000	-	-	-	-	-	51,000	5,620
	10,670	21,140	28,190	-	-	-	-	-	60,000	5,120
9 + 24 + 24	8,530	22,740	22,740	-	-	-	-	-	54,010	4,940
	9,550	25,230	25,230	-	-	-	-	-	60,010	4,610
12 + 12 + 12	12,000	12,000	12,000	-	-	-	-	-	36,000	3,390
	14,400	14,400	14,400	-	-	-	-	-	43,200	4,480
12 + 12 + 15	12,000	12,000	15,000	-	-	-	-	-	39,000	3,910
	14,400	14,400	18,000	-	-	-	-	-	46,800	4,680
12 + 12 + 18	12,000	12,000	18,000	-	-	-	-	-	42,000	4,510
	14,400	14,400	21,600	-	-	-	-	-	50,400	4,870
12 + 12 + 24	12,000	12,000	24,000	-	-	-	-	-	48,000	5,900
	14,400	14,400	28,800	-	-	-	-	-	57,600	5,210
12 + 15 + 15	12,000	15,000	15,000	-	-	-	-	-	42,000	4,510
	14,400	18,000	18,000	-	-	-	-	-	50,400	4,870
12 + 15 + 18	12,000	15,000	18,000	-	-	-	-	-	45,000	5,190
	14,400	18,000	21,600	-	-	-	-	-	54,000	5,050
12 + 15 + 24	12,000	15,000	24,000	-	-	-	-	-	51,000	5,620
	14,120	17,650	28,240	-	-	-	-	-	60,010	5,120
12 + 18 + 18	12,000	18,000	18,000	-	-	-	-	-	48,000	5,900
	14,400	21,600	21,600	-	-	-	-	-	57,600	5,210
12 + 18 + 24	12,000	18,000	24,000	-	-	-	-	-	54,000	5,400
	13,330	20,000	26,670	-	-	-	-	-	60,000	4,850
12 + 24 + 24	10,800	21,600	21,600	-	-	-	-	-	54,000	4,550
	12,000	24,000	24,000	-	-	-	-	-	60,000	4,390
15 + 15 + 15	15,000	15,000	15,000	-	-	-	-	-	45,000	5,190
	18,000	18,000	18,000	-	-	-	-	-	54,000	5,050
15 + 15 + 18	15,000	15,000	18,000	-	-	-	-	-	48,000	5,900
	18,000	18,000	21,600	-	-	-	-	-	57,600	5,210
15 + 15 + 24	15,000	15,000	24,000	-	-	-	-	-	54,000	5,400
	16,670	16,670	26,670	-	-	-	-	-	60,010	4,850
15 + 18 + 18	15,000	18,000	18,000	-	-	-	-	-	51,000	5,620
	17,650	21,180	21,180	-	-	-	-	-	60,010	5,120
15 + 18 + 24	14,210	17,050	22,740	-	-	-	-	-	54,000	4,940
	15,790	18,950	25,260	-	-	-	-	-	60,000	4,610
15 + 24 + 24	12,860	20,570	20,570	-	-	-	-	-	54,000	4,220
	14,290	22,860	22,860	-	-	-	-	-	60,010	4,190
18 + 18 + 18	18,000	18,000	18,000	-	-	-	-	-	54,000	5,400
	20,000	20,000	20,000	-	-	-	-	-	60,000	4,850
18 + 18 + 24	16,200	16,200	21,600	-	-	-	-	-	54,000	4,550
	18,000	18,000	24,000	-	-	-	-	-	60,000	4,390
18 + 24 + 24	14,730	19,640	19,640	-	-	-	-	-	54,010	3,930
	16,360	21,820	21,820	-	-	-	-	-	60,000	4,010
6 + 6 + 6 + 6	6,000	6,000	6,000	6,000	-	-	-	-	24,000	2,290
	7,200	7,200	7,200	7,200	-	-	-	-	28,800	2,960
6 + 6 + 6 + 9	6,000	6,000	6,000	9,000	-	-	-	-	27,000	2,540
	7,200	7,200	7,200	10,900	-	-	-	-	32,500	3,370
6 + 6 + 6 + 12	6,000	6,000	6,000	12,000	-	-	-	-	30,000	2,780
	7,200	7,200	7,200	14,400	-	-	-	-	36,000	3,770
6 + 6 + 6 + 15	6,000	6,000	6,000	15,000	-	-	-	-	33,000	3,010
	7,200	7,200	7,200	18,000	-	-	-	-	39,600	4,180
6 + 6 + 6 + 18	6,000	6,000	6,000	18,000	-	-	-	-	36,000	3,390
	7,200	7,200	7,200	21,600	-	-	-	-	43,200	4,480
6 + 6 + 6 + 24	6,000	6,000	6,000	24,000	-	-	-	-	42,000	4,510
	7,200	7,200	7,200	28,800	-	-	-	-	50,400	4,870
6 + 6 + 9 + 9	6,000	6,000	9,000	9,000	-	-	-	-	30,000	2,780
	7,200	7,200	10,900	10,900	-	-	-	-	36,200	3,790
6 + 6 + 9 + 12	6,000	6,000	9,000	12,000	-	-	-	-	33,000	3,010
	7,200	7,200	10,900	14,400	-	-	-	-	39,700	4,190
6 + 6 + 9 + 15	6,000	6,000	9,000	15,000	-	-	-	-	36,000	3,390
	7,200	7,200	10,900	18,000	-	-	-	-	43,300	4,490

MXZ-8B48NA OPERATION PERFORMANCE, contd.

Operation Performance for Indoor Unit Combinations (Unit A + Unit B + Unit C + Unit D + Unit E + Unit F + Unit G + Unit H)	Cooling Capacity (Btu/h)									
	Heating Capacity (Btu/h)									
	Unit A	Unit B	Unit C	Unit D	Unit E	Unit F	Unit G	Unit H	Total	Power Usage (W)
6 + 6 + 9 + 18	6,000	6,000	9,000	18,000	-	-	-	-	39,000	3,910
	7,200	7,200	10,900	21,600	-	-	-	-	46,900	4,690
6 + 6 + 9 + 24	6,000	6,000	9,000	24,000	-	-	-	-	45,000	5,190
	7,200	7,200	10,900	28,800	-	-	-	-	54,100	5,060
6 + 6 + 12 + 12	6,000	6,000	12,000	12,000	-	-	-	-	36,000	3,390
	7,200	7,200	14,400	14,400	-	-	-	-	43,200	4,480
6 + 6 + 12 + 15	6,000	6,000	12,000	15,000	-	-	-	-	39,000	3,910
	7,200	7,200	14,400	18,000	-	-	-	-	46,800	4,680
6 + 6 + 12 + 18	6,000	6,000	12,000	18,000	-	-	-	-	42,000	4,510
	7,200	7,200	14,400	21,600	-	-	-	-	50,400	4,870
6 + 6 + 12 + 24	6,000	6,000	12,000	24,000	-	-	-	-	48,000	5,900
	7,200	7,200	14,400	28,800	-	-	-	-	57,600	5,210
6 + 6 + 15 + 15	6,000	6,000	15,000	15,000	-	-	-	-	42,000	4,510
	7,200	7,200	18,000	18,000	-	-	-	-	50,400	4,870
6 + 6 + 15 + 18	6,000	6,000	15,000	18,000	-	-	-	-	45,000	5,190
	7,200	7,200	18,000	21,600	-	-	-	-	54,000	5,050
6 + 6 + 15 + 24	6,000	6,000	15,000	24,000	-	-	-	-	51,000	5,620
	7,060	7,060	17,650	28,240	-	-	-	-	60,010	5,120
6 + 6 + 18 + 18	6,000	6,000	18,000	18,000	-	-	-	-	48,000	5,900
	7,200	7,200	21,600	21,600	-	-	-	-	57,600	5,210
6 + 6 + 18 + 24	6,000	6,000	18,000	24,000	-	-	-	-	54,000	5,400
	6,670	6,670	20,000	26,670	-	-	-	-	60,010	4,850
6 + 6 + 24 + 24	5,400	5,400	21,600	21,600	-	-	-	-	54,000	4,550
	6,000	6,000	24,000	24,000	-	-	-	-	60,000	4,390
6 + 9 + 9 + 9	6,000	9,000	9,000	9,000	-	-	-	-	33,000	3,010
	7,200	10,900	10,900	10,900	-	-	-	-	39,900	4,210
6 + 9 + 9 + 12	6,000	9,000	9,000	12,000	-	-	-	-	36,000	3,390
	7,200	10,900	10,900	14,400	-	-	-	-	43,400	4,500
6 + 9 + 9 + 15	6,000	9,000	9,000	15,000	-	-	-	-	39,000	3,910
	7,200	10,900	10,900	18,000	-	-	-	-	47,000	4,700
6 + 9 + 9 + 18	6,000	9,000	9,000	18,000	-	-	-	-	42,000	4,510
	7,200	10,900	10,900	21,600	-	-	-	-	50,600	4,890
6 + 9 + 9 + 24	6,000	9,000	9,000	24,000	-	-	-	-	48,000	5,900
	7,200	10,900	10,900	28,800	-	-	-	-	57,800	5,230
6 + 9 + 12 + 12	6,000	9,000	12,000	12,000	-	-	-	-	39,000	3,910
	7,200	10,900	14,400	14,400	-	-	-	-	46,900	4,690
6 + 9 + 12 + 15	6,000	9,000	12,000	15,000	-	-	-	-	42,000	4,510
	7,200	10,900	14,400	18,000	-	-	-	-	50,500	4,880
6 + 9 + 12 + 18	6,000	9,000	12,000	18,000	-	-	-	-	45,000	5,190
	7,200	10,900	14,400	21,600	-	-	-	-	54,100	5,060
6 + 9 + 12 + 24	6,000	9,000	12,000	24,000	-	-	-	-	51,000	5,620
	7,050	10,670	14,090	28,190	-	-	-	-	60,000	5,120
6 + 9 + 15 + 15	6,000	9,000	15,000	15,000	-	-	-	-	45,000	5,190
	7,200	10,900	18,000	18,000	-	-	-	-	54,100	5,060
6 + 9 + 15 + 18	6,000	9,000	15,000	18,000	-	-	-	-	48,000	5,900
	7,200	10,900	18,000	21,600	-	-	-	-	57,700	5,220
6 + 9 + 15 + 24	6,000	9,000	15,000	24,000	-	-	-	-	54,000	5,400
	6,660	10,080	16,640	26,630	-	-	-	-	60,010	4,850
6 + 9 + 18 + 18	6,000	9,000	18,000	18,000	-	-	-	-	51,000	5,620
	7,050	10,670	21,140	21,140	-	-	-	-	60,000	5,120
6 + 9 + 18 + 24	5,680	8,530	17,050	22,740	-	-	-	-	54,000	4,940
	6,310	9,550	18,920	25,230	-	-	-	-	60,010	4,610
6 + 9 + 24 + 24	5,140	7,710	20,570	20,570	-	-	-	-	53,990	4,220
	5,710	8,640	22,830	22,830	-	-	-	-	60,010	4,190
6 + 12 + 12 + 12	6,000	12,000	12,000	12,000	-	-	-	-	42,000	4,510
	7,200	14,400	14,400	14,400	-	-	-	-	50,400	4,870
6 + 12 + 12 + 15	6,000	12,000	12,000	15,000	-	-	-	-	45,000	5,190
	7,200	14,400	14,400	18,000	-	-	-	-	54,000	5,050
6 + 12 + 12 + 18	6,000	12,000	12,000	18,000	-	-	-	-	48,000	5,900
	7,200	14,400	14,400	21,600	-	-	-	-	57,600	5,210
6 + 12 + 12 + 24	6,000	12,000	12,000	24,000	-	-	-	-	54,000	5,400
	6,670	13,330	13,330	26,670	-	-	-	-	60,000	4,850

MXZ-8B48NA OPERATION PERFORMANCE, contd.

Operation Performance for Indoor Unit Combinations (Unit A + Unit B + Unit C + Unit D + Unit E + Unit F + Unit G + Unit H)	Cooling Capacity (Btu/h)									
	Heating Capacity (Btu/h)									
	Unit A	Unit B	Unit C	Unit D	Unit E	Unit F	Unit G	Unit H	Total	Power Usage (W)
6 + 12 + 15 + 15	6,000	12,000	15,000	15,000	-	-	-	-	48,000	5,900
	7,200	14,400	18,000	18,000	-	-	-	-	57,600	5,210
6 + 12 + 15 + 18	6,000	12,000	15,000	18,000	-	-	-	-	51,000	5,620
	7,060	14,120	17,650	21,180	-	-	-	-	60,010	5,120
6 + 12 + 15 + 24	5,680	11,370	14,210	22,740	-	-	-	-	54,000	4,940
	6,320	12,630	15,790	25,260	-	-	-	-	60,000	4,610
6 + 12 + 18 + 18	6,000	12,000	18,000	18,000	-	-	-	-	54,000	5,400
	6,670	13,330	20,000	20,000	-	-	-	-	60,000	4,850
6 + 12 + 18 + 24	5,400	10,800	16,200	21,600	-	-	-	-	54,000	4,550
	6,000	12,000	18,000	24,000	-	-	-	-	60,000	4,390
6 + 12 + 24 + 24	4,910	9,820	19,640	19,640	-	-	-	-	54,010	3,930
	5,450	10,910	21,820	21,820	-	-	-	-	60,000	4,010
6 + 15 + 15 + 15	6,000	15,000	15,000	15,000	-	-	-	-	51,000	5,620
	7,060	17,650	17,650	17,650	-	-	-	-	60,010	5,120
6 + 15 + 15 + 18	6,000	15,000	15,000	18,000	-	-	-	-	54,000	5,400
	6,670	16,670	16,670	20,000	-	-	-	-	60,010	4,850
6 + 15 + 15 + 24	5,400	13,500	13,500	21,600	-	-	-	-	54,000	4,550
	6,000	15,000	15,000	24,000	-	-	-	-	60,000	4,390
6 + 15 + 18 + 18	5,680	14,210	17,050	17,050	-	-	-	-	53,990	4,940
	6,320	15,790	18,950	18,950	-	-	-	-	60,010	4,610
6 + 15 + 18 + 24	5,140	12,860	15,430	20,570	-	-	-	-	54,000	4,220
	5,710	14,290	17,140	22,860	-	-	-	-	60,000	4,190
6 + 15 + 24 + 24	4,700	11,740	18,780	18,780	-	-	-	-	54,000	3,680
	5,220	13,040	20,870	20,870	-	-	-	-	60,000	3,840
6 + 18 + 18 + 18	5,400	16,200	16,200	16,200	-	-	-	-	54,000	4,550
	6,000	18,000	18,000	18,000	-	-	-	-	60,000	4,390
6 + 18 + 18 + 24	4,910	14,730	14,730	19,640	-	-	-	-	54,010	3,930
	5,450	16,360	16,360	21,820	-	-	-	-	59,990	4,010
9 + 9 + 9 + 9	9,000	9,000	9,000	9,000	-	-	-	-	36,000	3,390
	10,900	10,900	10,900	10,900	-	-	-	-	43,600	4,520
9 + 9 + 9 + 12	9,000	9,000	9,000	12,000	-	-	-	-	39,000	3,910
	10,900	10,900	10,900	14,400	-	-	-	-	47,100	4,710
9 + 9 + 9 + 15	9,000	9,000	9,000	15,000	-	-	-	-	42,000	4,510
	10,900	10,900	10,900	18,000	-	-	-	-	50,700	4,900
9 + 9 + 9 + 18	9,000	9,000	9,000	18,000	-	-	-	-	45,000	5,190
	10,900	10,900	10,900	21,600	-	-	-	-	54,300	5,080
9 + 9 + 9 + 24	9,000	9,000	9,000	24,000	-	-	-	-	51,000	5,620
	10,630	10,630	10,630	28,100	-	-	-	-	59,990	5,120
9 + 9 + 12 + 12	9,000	9,000	12,000	12,000	-	-	-	-	42,000	4,510
	10,900	10,900	14,400	14,400	-	-	-	-	50,600	4,890
9 + 9 + 12 + 15	9,000	9,000	12,000	15,000	-	-	-	-	45,000	5,190
	10,900	10,900	14,400	18,000	-	-	-	-	54,200	5,070
9 + 9 + 12 + 18	9,000	9,000	12,000	18,000	-	-	-	-	48,000	5,900
	10,900	10,900	14,400	21,600	-	-	-	-	57,800	5,230
9 + 9 + 12 + 24	9,000	9,000	12,000	24,000	-	-	-	-	54,000	5,400
	10,060	10,060	13,290	26,580	-	-	-	-	59,990	4,850
9 + 9 + 15 + 15	9,000	9,000	15,000	15,000	-	-	-	-	48,000	5,900
	10,900	10,900	18,000	18,000	-	-	-	-	57,800	5,230
9 + 9 + 15 + 18	9,000	9,000	15,000	18,000	-	-	-	-	51,000	5,620
	10,650	10,650	17,590	21,110	-	-	-	-	60,000	5,120
9 + 9 + 15 + 24	8,530	8,530	14,210	22,740	-	-	-	-	54,010	4,940
	9,530	9,530	15,740	25,190	-	-	-	-	59,990	4,610
9 + 9 + 18 + 18	9,000	9,000	18,000	18,000	-	-	-	-	54,000	5,400
	10,060	10,060	19,940	19,940	-	-	-	-	60,000	4,850
9 + 9 + 18 + 24	8,100	8,100	16,200	21,600	-	-	-	-	54,000	4,550
	9,060	9,060	17,950	23,930	-	-	-	-	60,000	4,390
9 + 9 + 24 + 24	7,360	7,360	19,640	19,640	-	-	-	-	54,000	3,930
	8,240	8,240	21,760	21,760	-	-	-	-	60,000	4,010
9 + 12 + 12 + 12	9,000	12,000	12,000	12,000	-	-	-	-	45,000	5,190
	10,900	14,400	14,400	14,400	-	-	-	-	54,100	5,060
9 + 12 + 12 + 15	9,000	12,000	12,000	15,000	-	-	-	-	48,000	5,900
	10,900	14,400	14,400	18,000	-	-	-	-	57,700	5,220

MXZ-8B48NA OPERATION PERFORMANCE, contd.

Operation Performance for Indoor Unit Combinations (Unit A + Unit B + Unit C + Unit D + Unit E + Unit F + Unit G + Unit H)	Cooling Capacity (Btu/h)									
	Heating Capacity (Btu/h)									
	Unit A	Unit B	Unit C	Unit D	Unit E	Unit F	Unit G	Unit H	Total	Power Usage (W)
9 + 12 + 12 + 18	9,000	12,000	12,000	18,000	-	-	-	-	51,000	5,620
	10,670	14,090	14,090	21,140	-	-	-	-	59,990	5,120
9 + 12 + 12 + 24	8,530	11,370	11,370	22,740	-	-	-	-	54,010	4,940
	9,550	12,610	12,610	25,230	-	-	-	-	60,000	4,610
9 + 12 + 15 + 15	9,000	12,000	15,000	15,000	-	-	-	-	51,000	5,620
	10,670	14,090	17,620	17,620	-	-	-	-	60,000	5,120
9 + 12 + 15 + 18	9,000	12,000	15,000	18,000	-	-	-	-	54,000	5,400
	10,080	13,310	16,640	19,970	-	-	-	-	60,000	4,850
9 + 12 + 15 + 24	8,100	10,800	13,500	21,600	-	-	-	-	54,000	4,550
	9,070	11,980	14,980	23,970	-	-	-	-	60,000	4,390
9 + 12 + 18 + 18	8,530	11,370	17,050	17,050	-	-	-	-	54,000	4,940
	9,550	12,610	18,920	18,920	-	-	-	-	60,000	4,610
9 + 12 + 18 + 24	7,710	10,290	15,430	20,570	-	-	-	-	54,000	4,220
	8,640	11,410	17,120	22,830	-	-	-	-	60,000	4,190
9 + 12 + 24 + 24	7,040	9,390	18,780	18,780	-	-	-	-	53,990	3,680
	7,890	10,420	20,840	20,840	-	-	-	-	59,990	3,840
9 + 15 + 15 + 15	9,000	15,000	15,000	15,000	-	-	-	-	54,000	5,400
	10,080	16,640	16,640	16,640	-	-	-	-	60,000	4,850
9 + 15 + 15 + 18	8,530	14,210	14,210	17,050	-	-	-	-	54,000	4,940
	9,550	15,770	15,770	18,920	-	-	-	-	60,010	4,610
9 + 15 + 15 + 24	7,710	12,860	12,860	20,570	-	-	-	-	54,000	4,220
	8,640	14,270	14,270	22,830	-	-	-	-	60,010	4,190
9 + 15 + 18 + 18	8,100	13,500	16,200	16,200	-	-	-	-	54,000	4,550
	9,070	14,980	17,980	17,980	-	-	-	-	60,010	4,390
9 + 15 + 18 + 24	7,360	12,270	14,730	19,640	-	-	-	-	54,000	3,930
	8,250	13,620	16,340	21,790	-	-	-	-	60,000	4,010
9 + 18 + 18 + 18	7,710	15,430	15,430	15,430	-	-	-	-	54,000	4,220
	8,640	17,120	17,120	17,120	-	-	-	-	60,000	4,190
9 + 18 + 18 + 24	7,040	14,090	14,090	18,780	-	-	-	-	54,000	3,680
	7,890	15,630	15,630	20,840	-	-	-	-	59,990	3,840
12 + 12 + 12 + 12	12,000	12,000	12,000	12,000	-	-	-	-	48,000	5,900
	14,400	14,400	14,400	14,400	-	-	-	-	57,600	5,210
12 + 12 + 12 + 15	12,000	12,000	12,000	15,000	-	-	-	-	51,000	5,620
	14,120	14,120	14,120	17,650	-	-	-	-	60,010	5,120
12 + 12 + 12 + 18	12,000	12,000	12,000	18,000	-	-	-	-	54,000	5,400
	13,330	13,330	13,330	20,000	-	-	-	-	59,990	4,850
12 + 12 + 12 + 24	10,800	10,800	10,800	21,600	-	-	-	-	54,000	4,550
	12,000	12,000	12,000	24,000	-	-	-	-	60,000	4,390
12 + 12 + 15 + 15	12,000	12,000	15,000	15,000	-	-	-	-	54,000	5,400
	13,330	13,330	16,670	16,670	-	-	-	-	60,000	4,850
12 + 12 + 15 + 18	11,370	11,370	14,210	17,050	-	-	-	-	54,000	4,940
	12,630	12,630	15,790	18,950	-	-	-	-	60,000	4,610
12 + 12 + 15 + 24	10,290	10,290	12,860	20,570	-	-	-	-	54,010	4,220
	11,430	11,430	14,290	22,860	-	-	-	-	60,010	4,190
12 + 12 + 18 + 18	10,800	10,800	16,200	16,200	-	-	-	-	54,000	4,550
	12,000	12,000	18,000	18,000	-	-	-	-	60,000	4,390
12 + 12 + 18 + 24	9,820	9,820	14,730	19,640	-	-	-	-	54,010	3,930
	10,910	10,910	16,360	21,820	-	-	-	-	60,000	4,010
12 + 15 + 15 + 15	11,370	14,210	14,210	14,210	-	-	-	-	54,000	4,940
	12,630	15,790	15,790	15,790	-	-	-	-	60,000	4,610
12 + 15 + 15 + 18	10,800	13,500	13,500	16,200	-	-	-	-	54,000	4,550
	12,000	15,000	15,000	18,000	-	-	-	-	60,000	4,390
12 + 15 + 15 + 24	9,820	12,270	12,270	19,640	-	-	-	-	54,000	3,930
	10,910	13,640	13,640	21,820	-	-	-	-	60,010	4,010
12 + 15 + 18 + 18	10,290	12,860	15,430	15,430	-	-	-	-	54,010	4,220
	11,430	14,290	17,140	17,140	-	-	-	-	60,000	4,190
12 + 15 + 18 + 24	9,390	11,740	14,090	18,780	-	-	-	-	54,000	3,680
	10,430	13,040	15,650	20,870	-	-	-	-	59,990	3,840
12 + 18 + 18 + 18	9,820	14,730	14,730	14,730	-	-	-	-	54,010	3,930
	10,910	16,360	16,360	16,360	-	-	-	-	59,990	4,010
15 + 15 + 15 + 15	13,500	13,500	13,500	13,500	-	-	-	-	54,000	4,550
	15,000	15,000	15,000	15,000	-	-	-	-	60,000	4,390

MXZ-8B48NA OPERATION PERFORMANCE, contd.

Operation Performance for Indoor Unit Combinations (Unit A + Unit B + Unit C + Unit D + Unit E + Unit F + Unit G + Unit H)	Cooling Capacity (Btu/h)									
	Heating Capacity (Btu/h)									
	Unit A	Unit B	Unit C	Unit D	Unit E	Unit F	Unit G	Unit H	Total	Power Usage (W)
15 + 15 + 15 + 18	12,860	12,860	12,860	15,430	-	-	-	-	54,010	4,220
	14,290	14,290	14,290	17,140	-	-	-	-	60,010	4,190
15 + 15 + 15 + 24	11,740	11,740	11,740	18,780	-	-	-	-	54,000	3,680
	13,040	13,040	13,040	20,870	-	-	-	-	59,990	3,840
15 + 15 + 18 + 18	12,270	12,270	14,730	14,730	-	-	-	-	54,000	3,930
	13,640	13,640	16,360	16,360	-	-	-	-	60,000	4,010
15 + 18 + 18 + 18	11,740	14,090	14,090	14,090	-	-	-	-	54,010	3,680
	13,040	15,650	15,650	15,650	-	-	-	-	59,990	3,840
6 + 6 + 6 + 6 + 6	6,000	6,000	6,000	6,000	6,000	-	-	-	30,000	2,780
	7,200	7,200	7,200	7,200	7,200	-	-	-	36,000	3,770
6 + 6 + 6 + 6 + 9	6,000	6,000	6,000	6,000	9,000	-	-	-	33,000	3,010
	7,200	7,200	7,200	7,200	10,900	-	-	-	39,700	4,190
6 + 6 + 6 + 6 + 12	6,000	6,000	6,000	6,000	12,000	-	-	-	36,000	3,390
	7,200	7,200	7,200	7,200	14,400	-	-	-	43,200	4,480
6 + 6 + 6 + 6 + 15	6,000	6,000	6,000	6,000	15,000	-	-	-	39,000	3,910
	7,200	7,200	7,200	7,200	18,000	-	-	-	46,800	4,680
6 + 6 + 6 + 6 + 18	6,000	6,000	6,000	6,000	18,000	-	-	-	42,000	4,510
	7,200	7,200	7,200	7,200	21,600	-	-	-	50,400	4,870
6 + 6 + 6 + 6 + 24	6,000	6,000	6,000	6,000	24,000	-	-	-	48,000	5,900
	7,200	7,200	7,200	7,200	28,800	-	-	-	57,600	5,210
6 + 6 + 6 + 9 + 9	6,000	6,000	6,000	9,000	9,000	-	-	-	36,000	3,390
	7,200	7,200	7,200	10,900	10,900	-	-	-	43,400	4,500
6 + 6 + 6 + 9 + 12	6,000	6,000	6,000	9,000	12,000	-	-	-	39,000	3,910
	7,200	7,200	7,200	10,900	14,400	-	-	-	46,900	4,690
6 + 6 + 6 + 9 + 15	6,000	6,000	6,000	9,000	15,000	-	-	-	42,000	4,510
	7,200	7,200	7,200	10,900	18,000	-	-	-	50,500	4,880
6 + 6 + 6 + 9 + 18	6,000	6,000	6,000	9,000	18,000	-	-	-	45,000	5,190
	7,200	7,200	7,200	10,900	21,600	-	-	-	54,100	5,060
6 + 6 + 6 + 9 + 24	6,000	6,000	6,000	9,000	24,000	-	-	-	51,000	5,620
	7,050	7,050	7,050	10,670	28,190	-	-	-	60,010	5,120
6 + 6 + 6 + 12 + 12	6,000	6,000	6,000	12,000	12,000	-	-	-	42,000	4,510
	7,200	7,200	7,200	14,400	14,400	-	-	-	50,400	4,870
6 + 6 + 6 + 12 + 15	6,000	6,000	6,000	12,000	15,000	-	-	-	45,000	5,190
	7,200	7,200	7,200	14,400	18,000	-	-	-	54,000	5,050
6 + 6 + 6 + 12 + 18	6,000	6,000	6,000	12,000	18,000	-	-	-	48,000	5,900
	7,200	7,200	7,200	14,400	21,600	-	-	-	57,600	5,210
6 + 6 + 6 + 12 + 24	6,000	6,000	6,000	12,000	24,000	-	-	-	54,000	5,400
	6,670	6,670	6,670	13,330	26,670	-	-	-	60,010	4,850
6 + 6 + 6 + 15 + 15	6,000	6,000	6,000	15,000	15,000	-	-	-	48,000	5,900
	7,200	7,200	7,200	18,000	18,000	-	-	-	57,600	5,210
6 + 6 + 6 + 15 + 18	6,000	6,000	6,000	15,000	18,000	-	-	-	51,000	5,620
	7,060	7,060	7,060	17,650	21,180	-	-	-	60,010	5,120
6 + 6 + 6 + 15 + 24	5,680	5,680	5,680	14,210	22,740	-	-	-	53,990	4,940
	6,320	6,320	6,320	15,790	25,260	-	-	-	60,010	4,610
6 + 6 + 6 + 18 + 18	6,000	6,000	6,000	18,000	18,000	-	-	-	54,000	5,400
	6,670	6,670	6,670	20,000	20,000	-	-	-	60,010	4,850
6 + 6 + 6 + 18 + 24	5,400	5,400	5,400	16,200	21,600	-	-	-	54,000	4,550
	6,000	6,000	6,000	18,000	24,000	-	-	-	60,000	4,390
6 + 6 + 6 + 24 + 24	4,910	4,910	4,910	19,640	19,640	-	-	-	54,010	3,930
	5,450	5,450	5,450	21,820	21,820	-	-	-	59,990	4,010
6 + 6 + 9 + 9 + 9	6,000	6,000	9,000	9,000	9,000	-	-	-	39,000	3,910
	7,200	7,200	10,900	10,900	10,900	-	-	-	47,100	4,710
6 + 6 + 9 + 9 + 12	6,000	6,000	9,000	9,000	12,000	-	-	-	42,000	4,510
	7,200	7,200	10,900	10,900	14,400	-	-	-	50,600	4,890
6 + 6 + 9 + 9 + 15	6,000	6,000	9,000	9,000	15,000	-	-	-	45,000	5,190
	7,200	7,200	10,900	10,900	18,000	-	-	-	54,200	5,070
6 + 6 + 9 + 9 + 18	6,000	6,000	9,000	9,000	18,000	-	-	-	48,000	5,900
	7,200	7,200	10,900	10,900	21,600	-	-	-	57,800	5,230
6 + 6 + 9 + 9 + 24	6,000	6,000	9,000	9,000	24,000	-	-	-	54,000	5,400
	6,650	6,650	10,060	10,060	26,580	-	-	-	60,000	4,850

MXZ-8B48NA OPERATION PERFORMANCE, contd.

Operation Performance for Indoor Unit Combinations (Unit A + Unit B + Unit C + Unit D + Unit E + Unit F + Unit G + Unit H)	Cooling Capacity (Btu/h)									
	Heating Capacity (Btu/h)									
	Unit A	Unit B	Unit C	Unit D	Unit E	Unit F	Unit G	Unit H	Total	Power Usage (W)
6 + 6 + 9 + 12 + 12	6,000	6,000	9,000	12,000	12,000	-	-	-	45,000	5,190
	7,200	7,200	10,900	14,400	14,400	-	-	-	54,100	5,060
6 + 6 + 9 + 12 + 15	6,000	6,000	9,000	12,000	15,000	-	-	-	48,000	5,900
	7,200	7,200	10,900	14,400	18,000	-	-	-	57,700	5,220
6 + 6 + 9 + 12 + 18	6,000	6,000	9,000	12,000	18,000	-	-	-	51,000	5,620
	7,050	7,050	10,670	14,090	21,140	-	-	-	60,000	5,120
6 + 6 + 9 + 12 + 24	5,680	5,680	8,530	11,370	22,740	-	-	-	54,000	4,940
	6,310	6,310	9,550	12,610	25,230	-	-	-	60,010	4,610
6 + 6 + 9 + 15 + 15	6,000	6,000	9,000	15,000	15,000	-	-	-	51,000	5,620
	7,050	7,050	10,670	17,620	17,620	-	-	-	60,010	5,120
6 + 6 + 9 + 15 + 18	6,000	6,000	9,000	15,000	18,000	-	-	-	54,000	5,400
	6,660	6,660	10,080	16,640	19,970	-	-	-	60,010	4,850
6 + 6 + 9 + 15 + 24	5,400	5,400	8,100	13,500	21,600	-	-	-	54,000	4,550
	5,990	5,990	9,070	14,980	23,970	-	-	-	60,000	4,390
6 + 6 + 9 + 18 + 18	5,680	5,680	8,530	17,050	17,050	-	-	-	53,990	4,940
	6,310	6,310	9,550	18,920	18,920	-	-	-	60,010	4,610
6 + 6 + 9 + 18 + 24	5,140	5,140	7,710	15,430	20,570	-	-	-	53,990	4,220
	5,710	5,710	8,640	17,120	22,830	-	-	-	60,010	4,190
6 + 6 + 9 + 24 + 24	4,700	4,700	7,040	18,780	18,780	-	-	-	54,000	3,680
	5,210	5,210	7,890	20,840	20,840	-	-	-	59,990	3,840
6 + 6 + 12 + 12 + 12	6,000	6,000	12,000	12,000	12,000	-	-	-	48,000	5,900
	7,200	7,200	14,400	14,400	14,400	-	-	-	57,600	5,210
6 + 6 + 12 + 12 + 15	6,000	6,000	12,000	12,000	15,000	-	-	-	51,000	5,620
	7,060	7,060	14,120	14,120	17,650	-	-	-	60,010	5,120
6 + 6 + 12 + 12 + 18	6,000	6,000	12,000	12,000	18,000	-	-	-	54,000	5,400
	6,670	6,670	13,330	13,330	20,000	-	-	-	60,000	4,850
6 + 6 + 12 + 12 + 24	5,400	5,400	10,800	10,800	21,600	-	-	-	54,000	4,550
	6,000	6,000	12,000	12,000	24,000	-	-	-	60,000	4,390
6 + 6 + 12 + 15 + 15	6,000	6,000	12,000	15,000	15,000	-	-	-	54,000	5,400
	6,670	6,670	13,330	16,670	16,670	-	-	-	60,010	4,850
6 + 6 + 12 + 15 + 18	5,680	5,680	11,370	14,210	17,050	-	-	-	53,990	4,940
	6,320	6,320	12,630	15,790	18,950	-	-	-	60,010	4,610
6 + 6 + 12 + 15 + 24	5,140	5,140	10,290	12,860	20,570	-	-	-	54,000	4,220
	5,710	5,710	11,430	14,290	22,860	-	-	-	60,000	4,190
6 + 6 + 12 + 18 + 18	5,400	5,400	10,800	16,200	16,200	-	-	-	54,000	4,550
	6,000	6,000	12,000	18,000	18,000	-	-	-	60,000	4,390
6 + 6 + 12 + 18 + 24	4,910	4,910	9,820	14,730	19,640	-	-	-	54,010	3,930
	5,450	5,450	10,910	16,360	21,820	-	-	-	59,990	4,010
6 + 6 + 15 + 15 + 15	5,680	5,680	14,210	14,210	14,210	-	-	-	53,990	4,940
	6,320	6,320	15,790	15,790	15,790	-	-	-	60,010	4,610
6 + 6 + 15 + 15 + 18	5,400	5,400	13,500	13,500	16,200	-	-	-	54,000	4,550
	6,000	6,000	15,000	15,000	18,000	-	-	-	60,000	4,390
6 + 6 + 15 + 15 + 24	4,910	4,910	12,270	12,270	19,640	-	-	-	54,000	3,930
	5,450	5,450	13,640	13,640	21,820	-	-	-	60,000	4,010
6 + 6 + 15 + 18 + 18	5,140	5,140	12,860	15,430	15,430	-	-	-	54,000	4,220
	5,710	5,710	14,290	17,140	17,140	-	-	-	59,990	4,190
6 + 6 + 15 + 18 + 24	4,700	4,700	11,740	14,090	18,780	-	-	-	54,010	3,680
	5,220	5,220	13,040	15,650	20,870	-	-	-	60,000	3,840
6 + 6 + 18 + 18 + 18	4,910	4,910	14,730	14,730	14,730	-	-	-	54,010	3,930
	5,450	5,450	16,360	16,360	16,360	-	-	-	59,980	4,010
6 + 9 + 9 + 9 + 9	6,000	9,000	9,000	9,000	9,000	-	-	-	42,000	4,510
	7,200	10,900	10,900	10,900	10,900	-	-	-	50,800	4,910
6 + 9 + 9 + 9 + 12	6,000	9,000	9,000	9,000	12,000	-	-	-	45,000	5,190
	7,200	10,900	10,900	10,900	14,400	-	-	-	54,300	5,080
6 + 9 + 9 + 9 + 15	6,000	9,000	9,000	9,000	15,000	-	-	-	48,000	5,900
	7,200	10,900	10,900	10,900	18,000	-	-	-	57,900	5,230
6 + 9 + 9 + 9 + 18	6,000	9,000	9,000	9,000	18,000	-	-	-	51,000	5,620
	7,020	10,630	10,630	10,630	21,070	-	-	-	59,980	5,120
6 + 9 + 9 + 9 + 24	5,680	8,530	8,530	8,530	22,740	-	-	-	54,010	4,940
	6,290	9,520	9,520	9,520	25,150	-	-	-	60,000	4,610
6 + 9 + 9 + 12 + 12	6,000	9,000	9,000	12,000	12,000	-	-	-	48,000	5,900
	7,200	10,900	10,900	14,400	14,400	-	-	-	57,800	5,230

MXZ-8B48NA OPERATION PERFORMANCE, contd.

Operation Performance for Indoor Unit Combinations (Unit A + Unit B + Unit C + Unit D + Unit E + Unit F + Unit G + Unit H)	Cooling Capacity (Btu/h)									
	Heating Capacity (Btu/h)									
	Unit A	Unit B	Unit C	Unit D	Unit E	Unit F	Unit G	Unit H	Total	Power Usage (W)
6 + 9 + 9 + 12 + 15	6,000	9,000	9,000	12,000	15,000	-	-	-	51,000	5,620
	7,040	10,650	10,650	14,070	17,590	-	-	-	60,000	5,120
6 + 9 + 9 + 12 + 18	6,000	9,000	9,000	12,000	18,000	-	-	-	54,000	5,400
	6,650	10,060	10,060	13,290	19,940	-	-	-	60,000	4,850
6 + 9 + 9 + 12 + 24	5,400	8,100	8,100	10,800	21,600	-	-	-	54,000	4,550
	5,980	9,060	9,060	11,970	23,930	-	-	-	60,000	4,390
6 + 9 + 9 + 15 + 15	6,000	9,000	9,000	15,000	15,000	-	-	-	54,000	5,400
	6,650	10,060	10,060	16,620	16,620	-	-	-	60,010	4,850
6 + 9 + 9 + 15 + 18	5,680	8,530	8,530	14,210	17,050	-	-	-	54,000	4,940
	6,300	9,530	9,530	15,740	18,890	-	-	-	59,990	4,610
6 + 9 + 9 + 15 + 24	5,140	7,710	7,710	12,860	20,570	-	-	-	53,990	4,220
	5,700	8,630	8,630	14,250	22,800	-	-	-	60,010	4,190
6 + 9 + 9 + 18 + 18	5,400	8,100	8,100	16,200	16,200	-	-	-	54,000	4,550
	5,980	9,060	9,060	17,950	17,950	-	-	-	60,000	4,390
6 + 9 + 9 + 18 + 24	4,910	7,360	7,360	14,730	19,640	-	-	-	54,000	3,930
	5,440	8,240	8,240	16,320	21,760	-	-	-	60,000	4,010
6 + 9 + 12 + 12 + 12	6,000	9,000	12,000	12,000	12,000	-	-	-	51,000	5,620
	7,050	10,670	14,090	14,090	14,090	-	-	-	59,990	5,120
6 + 9 + 12 + 12 + 15	6,000	9,000	12,000	12,000	15,000	-	-	-	54,000	5,400
	6,660	10,080	13,310	13,310	16,640	-	-	-	60,000	4,850
6 + 9 + 12 + 12 + 18	5,680	8,530	11,370	11,370	17,050	-	-	-	54,000	4,940
	6,310	9,550	12,610	12,610	18,920	-	-	-	60,000	4,610
6 + 9 + 12 + 12 + 24	5,140	7,710	10,290	10,290	20,570	-	-	-	54,000	4,220
	5,710	8,640	11,410	11,410	22,830	-	-	-	60,000	4,190
6 + 9 + 12 + 15 + 15	5,680	8,530	11,370	14,210	14,210	-	-	-	54,000	4,940
	6,310	9,550	12,610	15,770	15,770	-	-	-	60,010	4,610
6 + 9 + 12 + 15 + 18	5,400	8,100	10,800	13,500	16,200	-	-	-	54,000	4,550
	5,990	9,070	11,980	14,980	17,980	-	-	-	60,000	4,390
6 + 9 + 12 + 15 + 24	4,910	7,360	9,820	12,270	19,640	-	-	-	54,000	3,930
	5,450	8,250	10,900	13,620	21,790	-	-	-	60,010	4,010
6 + 9 + 12 + 18 + 18	5,140	7,710	10,290	15,430	15,430	-	-	-	54,000	4,220
	5,710	8,640	11,410	17,120	17,120	-	-	-	60,000	4,190
6 + 9 + 12 + 18 + 24	4,700	7,040	9,390	14,090	18,780	-	-	-	54,000	3,680
	5,210	7,890	10,420	15,630	20,840	-	-	-	59,990	3,840
6 + 9 + 15 + 15 + 15	5,400	8,100	13,500	13,500	13,500	-	-	-	54,000	4,550
	5,990	9,070	14,980	14,980	14,980	-	-	-	60000	4,390
6 + 9 + 15 + 15 + 18	5,140	7,710	12,860	12,860	15,430	-	-	-	54000	4,220
	5,710	8,640	14,270	14,270	17,120	-	-	-	60,010	4,190
6 + 9 + 15 + 15 + 24	4,700	7,040	11,740	11,740	18,780	-	-	-	54,000	3,680
	5,210	7,890	13,030	13,030	20,840	-	-	-	60,000	3,840
6 + 9 + 15 + 18 + 18	4,910	7,360	12,270	14,730	14,730	-	-	-	54,000	3,930
	5,450	8,250	13,620	16,340	16,340	-	-	-	60,000	4,010
6 + 9 + 18 + 18 + 18	4,700	7,040	14,090	14,090	14,090	-	-	-	54,010	3,680
	5,210	7,890	15,630	15,630	15,630	-	-	-	59,990	3,840
6 + 12 + 12 + 12 + 12	6,000	12,000	12,000	12,000	12,000	-	-	-	54,000	5,400
	6,670	13,330	13,330	13,330	13,330	-	-	-	59,990	4,850
6 + 12 + 12 + 12 + 15	5,680	11,370	11,370	11,370	14,210	-	-	-	54,000	4,940
	6,320	12,630	12,630	12,630	15,790	-	-	-	60,000	4,610
6 + 12 + 12 + 12 + 18	5,400	10,800	10,800	10,800	16,200	-	-	-	54,000	4,550
	6,000	12,000	12,000	12,000	18,000	-	-	-	60,000	4,390
6 + 12 + 12 + 12 + 24	4,910	9,820	9,820	9,820	19,640	-	-	-	54,010	3,930
	5,450	10,910	10,910	10,910	21,820	-	-	-	60,000	4,010
6 + 12 + 12 + 15 + 15	5,400	10,800	10,800	13,500	13,500	-	-	-	54,000	4,550
	6,000	12,000	12,000	15,000	15,000	-	-	-	60,000	4,390
6 + 12 + 12 + 15 + 18	5,140	10,290	10,290	12,860	15,430	-	-	-	54,010	4,220
	5,710	11,430	11,430	14,290	17,140	-	-	-	60,000	4,190
6 + 12 + 12 + 15 + 24	4,700	9,390	9,390	11,740	18,780	-	-	-	54,000	3,680
	5,220	10,430	10,430	13,040	20,870	-	-	-	59,990	3,840
6 + 12 + 12 + 18 + 18	4,910	9,820	9,820	14,730	14,730	-	-	-	54,010	3,930
	5,450	10,910	10,910	16,360	16,360	-	-	-	59,990	4,010
6 + 12 + 15 + 15 + 15	5,140	10,290	12,860	12,860	12,860	-	-	-	54,010	4,220
	5,710	11,430	14,290	14,290	14,290	-	-	-	60,010	4,190

MXZ-8B48NA OPERATION PERFORMANCE, contd.

Operation Performance for Indoor Unit Combinations (Unit A + Unit B + Unit C + Unit D + Unit E + Unit F + Unit G + Unit H)	Cooling Capacity (Btu/h)									
	Heating Capacity (Btu/h)									
	Unit A	Unit B	Unit C	Unit D	Unit E	Unit F	Unit G	Unit H	Total	Power Usage (W)
6 + 12 + 15 + 15 + 18	4,910	9,820	12,270	12,270	14,730	-	-	-	54,000	3,930
	5,450	10,910	13,640	13,640	16,360	-	-	-	60,000	4,010
6 + 12 + 15 + 18 + 18	4,700	9,390	11,740	14,090	14,090	-	-	-	54,010	3,680
	5,220	10,430	13,040	15,650	15,650	-	-	-	59,990	3,840
6 + 15 + 15 + 15 + 15	4,910	12,270	12,270	12,270	12,270	-	-	-	53,990	3,930
	5,450	13,640	13,640	13,640	13,640	-	-	-	60,010	4,010
6 + 15 + 15 + 15 + 18	4,700	11,740	11,740	11,740	14,090	-	-	-	54,010	3,680
	5,220	13,040	13,040	13,040	15,650	-	-	-	59,990	3,840
9 + 9 + 9 + 9 + 9	9,000	9,000	9,000	9,000	9,000	-	-	-	45,000	5,190
	10,900	10,900	10,900	10,900	10,900	-	-	-	54,500	5,100
9 + 9 + 9 + 9 + 12	9,000	9,000	9,000	9,000	12,000	-	-	-	48,000	5,900
	10,900	10,900	10,900	10,900	14,400	-	-	-	58,000	5,240
9 + 9 + 9 + 9 + 15	9,000	9,000	9,000	9,000	15,000	-	-	-	51,000	5,620
	10,620	10,620	10,620	10,620	17,530	-	-	-	60,010	5,120
9 + 9 + 9 + 9 + 18	9,000	9,000	9,000	9,000	18,000	-	-	-	54,000	5,400
	10,030	10,030	10,030	10,030	19,880	-	-	-	60,000	4,850
9 + 9 + 9 + 9 + 24	8,100	8,100	8,100	8,100	21,600	-	-	-	54,000	4,550
	9,030	9,030	9,030	9,030	23,870	-	-	-	59,990	4,390
9 + 9 + 9 + 12 + 12	9,000	9,000	9,000	12,000	12,000	-	-	-	51,000	5,620
	10,630	10,630	10,630	14,050	14,050	-	-	-	59,990	5,120
9 + 9 + 9 + 12 + 15	9,000	9,000	9,000	12,000	15,000	-	-	-	54,000	5,400
	10,050	10,050	10,050	13,270	16,590	-	-	-	60,010	4,850
9 + 9 + 9 + 12 + 18	8,530	8,530	8,530	11,370	17,050	-	-	-	54,010	4,940
	9,520	9,520	9,520	12,580	18,860	-	-	-	60,000	4,610
9 + 9 + 9 + 12 + 24	7,710	7,710	7,710	10,290	20,570	-	-	-	53,990	4,220
	8,620	8,620	8,620	11,380	22,770	-	-	-	60,010	4,190
9 + 9 + 9 + 15 + 15	8,530	8,530	8,530	14,210	14,210	-	-	-	54,010	4,940
	9,520	9,520	9,520	15,720	15,720	-	-	-	60,000	4,610
9 + 9 + 9 + 15 + 18	8,100	8,100	8,100	13,500	16,200	-	-	-	54,000	4,550
	9,050	9,050	9,050	14,940	17,930	-	-	-	60,020	4,390
9 + 9 + 9 + 15 + 24	7,360	7,360	7,360	12,270	19,640	-	-	-	53,990	3,930
	8,230	8,230	8,230	13,580	21,740	-	-	-	60,010	4,010
9 + 9 + 9 + 18 + 18	7,710	7,710	7,710	15,430	15,430	-	-	-	53,990	4,220
	8,620	8,620	8,620	17,080	17,080	-	-	-	60,020	4,190
9 + 9 + 9 + 18 + 24	7,040	7,040	7,040	14,090	18,780	-	-	-	53,990	3,680
	7,870	7,870	7,870	15,600	20,790	-	-	-	60,000	3,840
9 + 9 + 12 + 12 + 12	9,000	9,000	12,000	12,000	12,000	-	-	-	54,000	5,400
	10,060	10,060	13,290	13,290	13,290	-	-	-	59,990	4,850
9 + 9 + 12 + 12 + 15	8,530	8,530	11,370	11,370	14,210	-	-	-	54,010	4,940
	9,530	9,530	12,590	12,590	15,740	-	-	-	59,980	4,610
9 + 9 + 12 + 12 + 18	8,100	8,100	10,800	10,800	16,200	-	-	-	54,000	4,550
	9,060	9,060	11,970	11,970	17,950	-	-	-	60,010	4,390
9 + 9 + 12 + 12 + 24	7,360	7,360	9,820	9,820	19,640	-	-	-	54,000	3,930
	8,240	8,240	10,880	10,880	21,760	-	-	-	60,000	4,010
9 + 9 + 12 + 15 + 15	8,100	8,100	10,800	13,500	13,500	-	-	-	54,000	4,550
	9,060	9,060	11,970	14,960	14,960	-	-	-	60,010	4,390
9 + 9 + 12 + 15 + 18	7,710	7,710	10,290	12,860	15,430	-	-	-	54,000	4,220
	8,630	8,630	11,400	14,250	17,100	-	-	-	60,010	4,190
9 + 9 + 12 + 15 + 24	7,040	7,040	9,390	11,740	18,780	-	-	-	53,990	3,680
	7,880	7,880	10,410	13,010	20,820	-	-	-	60,000	3,840
9 + 9 + 12 + 18 + 18	7,360	7,360	9,820	14,730	14,730	-	-	-	54,000	3,930
	8,240	8,240	10,880	16,320	16,320	-	-	-	60,000	4,010
9 + 9 + 15 + 15 + 15	7,710	7,710	12,860	12,860	12,860	-	-	-	54,000	4,220
	8,630	8,630	14,250	14,250	14,250	-	-	-	60,010	4,190
9 + 9 + 15 + 15 + 18	7,360	7,360	12,270	12,270	14,730	-	-	-	53,990	3,930
	8,240	8,240	13,600	13,600	16,320	-	-	-	60,000	4,010
9 + 9 + 15 + 18 + 18	7,040	7,040	11,740	14,090	14,090	-	-	-	54,000	3,680
	7,880	7,880	13,010	15,610	15,610	-	-	-	59,990	3,840
9 + 12 + 12 + 12 + 12	8,530	11,370	11,370	11,370	11,370	-	-	-	54,010	4,940
	9,550	12,610	12,610	12,610	12,610	-	-	-	59,990	4,610
9 + 12 + 12 + 12 + 15	8,100	10,800	10,800	10,800	13,500	-	-	-	54,000	4,550
	9,070	11,980	11,980	11,980	14,980	-	-	-	59,990	4,390

MXZ-8B48NA OPERATION PERFORMANCE, contd.

Operation Performance for Indoor Unit Combinations (Unit A + Unit B + Unit C + Unit D + Unit E + Unit F + Unit G + Unit H)	Cooling Capacity (Btu/h)									
	Heating Capacity (Btu/h)									
	Unit A	Unit B	Unit C	Unit D	Unit E	Unit F	Unit G	Unit H	Total	Power Usage (W)
9 + 12 + 12 + 12 + 18	7,710	10,290	10,290	10,290	15,430	-	-	-	54,010	4,220
	8,640	11,410	11,410	11,410	17,120	-	-	-	59,990	4,190
9 + 12 + 12 + 12 + 24	7,040	9,390	9,390	9,390	18,780	-	-	-	53,990	3,680
	7,890	10,420	10,420	10,420	20,840	-	-	-	59,990	3,840
9 + 12 + 12 + 15 + 15	7,710	10,290	10,290	12,860	12,860	-	-	-	54,010	4,220
	8,640	11,410	11,410	14,270	14,270	-	-	-	60,000	4,190
9 + 12 + 12 + 15 + 18	7,360	9,820	9,820	12,270	14,730	-	-	-	54,000	3,930
	8,250	10,900	10,900	13,620	16,340	-	-	-	60,010	4,010
9 + 12 + 12 + 18 + 18	7,040	9,390	9,390	14,090	14,090	-	-	-	54,000	3,680
	7,890	10,420	10,420	15,630	15,630	-	-	-	59,990	3,840
9 + 12 + 15 + 15 + 15	7,360	9,820	12,270	12,270	12,270	-	-	-	53,990	3,930
	8,250	10,900	13,620	13,620	13,620	-	-	-	60,010	4,010
9 + 12 + 15 + 15 + 18	7,040	9,390	11,740	11,740	14,090	-	-	-	54,000	3,680
	7,890	10,420	13,030	13,030	15,630	-	-	-	60,000	3,840
9 + 15 + 15 + 15 + 15	7040	11,740	11,740	11,740	11,740	-	-	-	54,000	3,680
	7,890	13,030	13,030	13,030	13,030	-	-	-	60,010	3,840
12 + 12 + 12 + 12 + 12	10,800	10,800	10,800	10,800	10,800	-	-	-	54,000	4,550
	12,000	12,000	12,000	12,000	12,000	-	-	-	60,000	4,390
12 + 12 + 12 + 12 + 15	10,290	10,290	10,290	10,290	12,860	-	-	-	54,020	4,220
	11,430	11,430	11,430	11,430	14,290	-	-	-	60,010	4,190
12 + 12 + 12 + 12 + 18	9,820	9,820	9,820	9,820	14,730	-	-	-	54,010	3,930
	10,910	10,910	10,910	10,910	16,360	-	-	-	60,000	4,010
12 + 12 + 12 + 15 + 15	9,820	9,820	9,820	12,270	12,270	-	-	-	54,000	3,930
	10,910	10,910	10,910	13,640	13,640	-	-	-	60,010	4,010
12 + 12 + 12 + 15 + 18	9,390	9,390	9,390	11,740	14,090	-	-	-	54,000	3,680
	10,430	10,430	10,430	13,040	15,650	-	-	-	59,980	3,840
12 + 12 + 15 + 15 + 15	9,390	9,390	11,740	11,740	11,740	-	-	-	54,000	3,680
	10,430	10,430	13,040	13,040	13,040	-	-	-	59,980	3,840
6 + 6 + 6 + 6 + 6 + 6	6,000	6,000	6,000	6,000	6,000	6,000	-	-	36,000	3,390
	7,200	7,200	7,200	7,200	7,200	7,200	-	-	43,200	4,480
6 + 6 + 6 + 6 + 6 + 9	6,000	6,000	6,000	6,000	6,000	9,000	-	-	39,000	3,910
	7,200	7,200	7,200	7,200	7,200	10,900	-	-	46,900	4,690
6 + 6 + 6 + 6 + 6 + 12	6,000	6,000	6,000	6,000	6,000	12,000	-	-	42,000	4,510
	7,200	7,200	7,200	7,200	7,200	14,400	-	-	50,400	4,870
6 + 6 + 6 + 6 + 6 + 15	6,000	6,000	6,000	6,000	6,000	15,000	-	-	45,000	5,190
	7,200	7,200	7,200	7,200	7,200	18,000	-	-	54,000	5,050
6 + 6 + 6 + 6 + 6 + 18	6,000	6,000	6,000	6,000	6,000	18,000	-	-	48,000	5,900
	7,200	7,200	7,200	7,200	7,200	21,600	-	-	57,600	5,210
6 + 6 + 6 + 6 + 6 + 24	6,000	6,000	6,000	6,000	6,000	24,000	-	-	54,000	5,400
	6,670	6,670	6,670	6,670	6,670	26,670	-	-	60,020	4,850
6 + 6 + 6 + 6 + 9 + 9	6,000	6,000	6,000	6,000	9,000	9,000	-	-	42,000	4,510
	7,200	7,200	7,200	7,200	10,900	10,900	-	-	50,600	4,890
6 + 6 + 6 + 6 + 9 + 12	6,000	6,000	6,000	6,000	9,000	12,000	-	-	45,000	5,190
	7,200	7,200	7,200	7,200	10,900	14,400	-	-	54,100	5,060
6 + 6 + 6 + 6 + 9 + 15	6,000	6,000	6,000	6,000	9,000	15,000	-	-	48,000	5,900
	7,200	7,200	7,200	7,200	10,900	18,000	-	-	57,700	5,220
6 + 6 + 6 + 6 + 9 + 18	6,000	6,000	6,000	6,000	9,000	18,000	-	-	51,000	5,620
	7,050	7,050	7,050	7,050	10,670	21,140	-	-	60,010	5,120
6 + 6 + 6 + 6 + 9 + 24	5,680	5,680	5,680	5,680	8,530	22,740	-	-	53,990	4,940
	6,310	6,310	6,310	6,310	9,550	25,230	-	-	60,020	4,610
6 + 6 + 6 + 6 + 12 + 12	6,000	6,000	6,000	6,000	12,000	12,000	-	-	48,000	5,900
	7,200	7,200	7,200	7,200	14,400	14,400	-	-	57,600	5,210
6 + 6 + 6 + 6 + 12 + 15	6,000	6,000	6,000	6,000	12,000	15,000	-	-	51,000	5,620
	7,060	7,060	7,060	7,060	14,120	17,650	-	-	60,010	5,120
6 + 6 + 6 + 6 + 12 + 18	6,000	6,000	6,000	6,000	12,000	18,000	-	-	54,000	5,400
	6,670	6,670	6,670	6,670	13,330	20,000	-	-	60,010	4,850
6 + 6 + 6 + 6 + 12 + 24	5,400	5,400	5,400	5,400	10,800	21,600	-	-	54,000	4,550
	6,000	6,000	6,000	6,000	12,000	24,000	-	-	60,000	4,390
6 + 6 + 6 + 6 + 15 + 15	6,000	6,000	6,000	6,000	15,000	15,000	-	-	54,000	5,400
	6,670	6,670	6,670	6,670	16,670	16,670	-	-	60,020	4,850
6 + 6 + 6 + 6 + 15 + 18	5,680	5,680	5,680	5,680	14,210	17,050	-	-	53,980	4,940
	6,320	6,320	6,320	6,320	15,790	18,950	-	-	60,020	4,610

MXZ-8B48NA OPERATION PERFORMANCE, contd.

Operation Performance for Indoor Unit Combinations (Unit A + Unit B + Unit C + Unit D + Unit E + Unit F + Unit G + Unit H)	Cooling Capacity (Btu/h)									
	Heating Capacity (Btu/h)									
	Unit A	Unit B	Unit C	Unit D	Unit E	Unit F	Unit G	Unit H	Total	Power Usage (W)
6 + 6 + 6 + 6 + 15 + 24	5,140	5,140	5,140	5,140	12,860	20,570	-	-	53,990	4,220
	5,710	5,710	5,710	5,710	14,290	22,860	-	-	59,990	4,190
6 + 6 + 6 + 6 + 18 + 18	5,400	5,400	5,400	5,400	16,200	16,200	-	-	54,000	4,550
	6,000	6,000	6,000	6,000	18,000	18,000	-	-	60,000	4,390
6 + 6 + 6 + 6 + 18 + 24	4,910	4,910	4,910	4,910	14,730	19,640	-	-	54,010	3,930
	5,450	5,450	5,450	5,450	16,360	21,820	-	-	59,980	4,010
6 + 6 + 6 + 9 + 9 + 9	6,000	6,000	6,000	9,000	9,000	9,000	-	-	45,000	5,190
	7,200	7,200	7,200	10,900	10,900	10,900	-	-	54,300	5,080
6 + 6 + 6 + 9 + 9 + 12	6,000	6,000	6,000	9,000	9,000	12,000	-	-	48,000	5,900
	7,200	7,200	7,200	10,900	10,900	14,400	-	-	57,800	5,230
6 + 6 + 6 + 9 + 9 + 15	6,000	6,000	6,000	9,000	9,000	15,000	-	-	51,000	5,620
	7,040	7,040	7,040	10,650	10,650	17,590	-	-	60,010	5,120
6 + 6 + 6 + 9 + 9 + 18	6,000	6,000	6,000	9,000	9,000	18,000	-	-	54,000	5,400
	6,650	6,650	6,650	10,060	10,060	19,940	-	-	60,010	4,850
6 + 6 + 6 + 9 + 9 + 24	5,400	5,400	5,400	8,100	8,100	21,600	-	-	54,000	4,550
	5,980	5,980	5,980	9,060	9,060	23,930	-	-	59,990	4,390
6 + 6 + 6 + 9 + 12 + 12	6,000	6,000	6,000	9,000	12,000	12,000	-	-	51,000	5,620
	7,050	7,050	7,050	10,670	14,090	14,090	-	-	60,000	5,120
6 + 6 + 6 + 9 + 12 + 15	6,000	6,000	6,000	9,000	12,000	15,000	-	-	54,000	5,400
	6,660	6,660	6,660	10,080	13,310	16,640	-	-	60,010	4,850
6 + 6 + 6 + 9 + 12 + 18	5,680	5,680	5,680	8,530	11,370	17,050	-	-	53,990	4,940
	6,310	6,310	6,310	9,550	12,610	18,920	-	-	60,010	4,610
6 + 6 + 6 + 9 + 12 + 24	5,140	5,140	5,140	7,710	10,290	20,570	-	-	53,990	4,220
	5,710	5,710	5,710	8,640	11,410	22,830	-	-	60,010	4,190
6 + 6 + 6 + 9 + 15 + 15	5,680	5,680	5,680	8,530	14,210	14,210	-	-	53,990	4,940
	6,310	6,310	6,310	9,550	15,770	15,770	-	-	60,020	4,610
6 + 6 + 6 + 9 + 15 + 18	5,400	5,400	5,400	8,100	13,500	16,200	-	-	54,000	4,550
	5,990	5,990	5,990	9,070	14,980	17,980	-	-	60,000	4,390
6 + 6 + 6 + 9 + 15 + 24	4,910	4,910	4,910	7,360	12,270	19,640	-	-	54,000	3,930
	5,450	5,450	5,450	8,250	13,620	21,790	-	-	60,010	4,010
6 + 6 + 6 + 9 + 18 + 18	5,140	5,140	5,140	7,710	15,430	15,430	-	-	53,990	4,220
	5,710	5,710	5,710	8,640	17,120	17,120	-	-	60,010	4,190
6 + 6 + 6 + 9 + 18 + 24	4,700	4,700	4,700	7,040	14,090	18,780	-	-	54,010	3,680
	5,210	5,210	5,210	7,890	15,630	20,840	-	-	59,990	3,840
6 + 6 + 6 + 12 + 12 + 12	6,000	6,000	6,000	12,000	12,000	12,000	-	-	54,000	5,400
	6,670	6,670	6,670	13,330	13,330	13,330	-	-	60,000	4,850
6 + 6 + 6 + 12 + 12 + 15	5,680	5,680	5,680	11,370	11,370	14,210	-	-	53,990	4,940
	6,320	6,320	6,320	12,630	12,630	15,790	-	-	60,010	4,610
6 + 6 + 6 + 12 + 12 + 18	5,400	5,400	5,400	10,800	10,800	16,200	-	-	54,000	4,550
	6,000	6,000	6,000	12,000	12,000	18,000	-	-	60,000	4,390
6 + 6 + 6 + 12 + 12 + 24	4,910	4,910	4,910	9,820	9,820	19,640	-	-	54,010	3,930
	5,450	5,450	5,450	10,910	10,910	21,820	-	-	59,990	4,010
6 + 6 + 6 + 12 + 15 + 15	5,400	5,400	5,400	10,800	13,500	13,500	-	-	54,000	4,550
	6,000	6,000	6,000	12,000	15,000	15,000	-	-	60,000	4,390
6 + 6 + 6 + 12 + 15 + 18	5,140	5,140	5,140	10,290	12,860	15,430	-	-	54,000	4,220
	5,710	5,710	5,710	11,430	14,290	17,140	-	-	59,990	4,190
6 + 6 + 6 + 12 + 15 + 24	4,700	4,700	4,700	9,390	11,740	18,780	-	-	54,010	3,680
	5,220	5,220	5,220	10,430	13,040	20,870	-	-	60,000	3,840
6 + 6 + 6 + 12 + 18 + 18	4,910	4,910	4,910	9,820	14,730	14,730	-	-	54,010	3,930
	5,450	5,450	5,450	10,910	16,360	16,360	-	-	59,980	4,010
6 + 6 + 6 + 15 + 15 + 15	5,140	5,140	5,140	12,860	12,860	12,860	-	-	54,000	4,220
	5,710	5,710	5,710	14,290	14,290	14,290	-	-	60,000	4,190
6 + 6 + 6 + 15 + 15 + 18	4,910	4,910	4,910	12,270	12,270	14,730	-	-	54,000	3,930
	5,450	5,450	5,450	13,640	13,640	16,360	-	-	59,990	4,010
6 + 6 + 6 + 15 + 18 + 18	4,700	4,700	4,700	11,740	14,090	14,090	-	-	54,020	3,680
	5,220	5,220	5,220	13,040	15,650	15,650	-	-	60,000	3,840
6 + 6 + 9 + 9 + 9 + 9	6,000	6,000	9,000	9,000	9,000	9,000	-	-	48,000	5,900
	7,200	7,200	10,900	10,900	10,900	10,900	-	-	58,000	5,240
6 + 6 + 9 + 9 + 9 + 12	6,000	6,000	9,000	9,000	9,000	12,000	-	-	51,000	5,620
	7,020	7,020	10,630	10,630	10,630	14,050	-	-	59,980	5,120
6 + 6 + 9 + 9 + 9 + 15	6,000	6,000	9,000	9,000	9,000	15,000	-	-	54,000	5,400
	6,640	6,640	10,050	10,050	10,050	16,590	-	-	60,020	4,850

MXZ-8B48NA OPERATION PERFORMANCE, contd.

Operation Performance for Indoor Unit Combinations (Unit A + Unit B + Unit C + Unit D + Unit E + Unit F + Unit G + Unit H)	Cooling Capacity (Btu/h)									
	Heating Capacity (Btu/h)									
	Unit A	Unit B	Unit C	Unit D	Unit E	Unit F	Unit G	Unit H	Total	Power Usage (W)
6 + 6 + 9 + 9 + 9 + 18	5,680	5,680	8,530	8,530	8,530	17,050	-	-	54,000	4,940
	6,290	6,290	9,520	9,520	9,520	18,860	-	-	60,000	4,610
6 + 6 + 9 + 9 + 9 + 24	5,140	5,140	7,710	7,710	7,710	20,570	-	-	53,980	4,220
	5,690	5,690	8,620	8,620	8,620	22,770	-	-	60,010	4,190
6 + 6 + 9 + 9 + 12 + 12	6,000	6,000	9,000	9,000	12,000	12,000	-	-	54,000	5,400
	6,650	6,650	10,060	10,060	13,290	13,290	-	-	60,000	4,850
6 + 6 + 9 + 9 + 12 + 15	5,680	5,680	8,530	8,530	11,370	14,210	-	-	54,000	4,940
	6,300	6,300	9,530	9,530	12,590	15,740	-	-	59,990	4,610
6 + 6 + 9 + 9 + 12 + 18	5,400	5,400	8,100	8,100	10,800	16,200	-	-	54,000	4,550
	5,980	5,980	9,060	9,060	11,970	17,950	-	-	60,000	4,390
6 + 6 + 9 + 9 + 12 + 24	4,910	4,910	7,360	7,360	9,820	19,640	-	-	54,000	3,930
	5,440	5,440	8,240	8,240	10,880	21,760	-	-	60,000	4,010
6 + 6 + 9 + 9 + 15 + 15	5,400	5,400	8,100	8,100	13,500	13,500	-	-	54,000	4,550
	5,980	5,980	9,060	9,060	14,960	14,960	-	-	60,000	4,390
6 + 6 + 9 + 9 + 15 + 18	5,140	5,140	7,710	7,710	12,860	15,430	-	-	53,990	4,220
	5,700	5,700	8,630	8,630	14,250	17,100	-	-	60,010	4,190
6 + 6 + 9 + 9 + 15 + 24	4,700	4,700	7,040	7,040	11,740	18,780	-	-	54,000	3,680
	5,200	5,200	7,880	7,880	13,010	20,820	-	-	59,990	3,840
6 + 6 + 9 + 9 + 18 + 18	4,910	4,910	7,360	7,360	14,730	14,730	-	-	54,000	3,930
	5,440	5,440	8,240	8,240	16,320	16,320	-	-	60,000	4,010
6 + 6 + 9 + 12 + 12 + 12	5,680	5,680	8,530	11,370	11,370	11,370	-	-	54,000	4,940
	6,310	6,310	9,550	12,610	12,610	12,610	-	-	60,000	4,610
6 + 6 + 9 + 12 + 12 + 15	5,400	5,400	8,100	10,800	10,800	13,500	-	-	54,000	4,550
	5,990	5,990	9,070	11,980	11,980	14,980	-	-	59,990	4,390
6 + 6 + 9 + 12 + 12 + 18	5,140	5,140	7,710	10,290	10,290	15,430	-	-	54,000	4,220
	5,710	5,710	8,640	11,410	11,410	17,120	-	-	60,000	4,190
6 + 6 + 9 + 12 + 12 + 24	4,700	4,700	7,040	9,390	9,390	18,780	-	-	54,000	3,680
	5,210	5,210	7,890	10,420	10,420	20,840	-	-	59,990	3,840
6 + 6 + 9 + 12 + 15 + 15	5,140	5,140	7,710	10,290	12,860	12,860	-	-	54,000	4,220
	5,710	5,710	8,640	11,410	14,270	14,270	-	-	60,010	4,190
6 + 6 + 9 + 12 + 15 + 18	4,910	4,910	7,360	9,820	12,270	14,730	-	-	54,000	3,930
	5,450	5,450	8,250	10,900	13,620	16,340	-	-	60,010	4,010
6 + 6 + 9 + 12 + 18 + 18	4,700	4,700	7,040	9,390	14,090	14,090	-	-	54,010	3,680
	5,210	5,210	7,890	10,420	15,630	15,630	-	-	59,990	3,840
6 + 6 + 9 + 15 + 15 + 15	4,910	4,910	7,360	12,270	12,270	12,270	-	-	53,990	3,930
	5,450	5,450	8,250	13,620	13,620	13,620	-	-	60,010	4,010
6 + 6 + 9 + 15 + 15 + 18	4,700	4,700	7,040	11,740	11,740	14,090	-	-	54,010	3,680
	5,210	5,210	7,890	13,030	13,030	15,630	-	-	60,000	3,840
6 + 6 + 12 + 12 + 12 + 12	5,400	5,400	10,800	10,800	10,800	10,800	-	-	54,000	4,550
	6,000	6,000	12,000	12,000	12,000	12,000	-	-	60,000	4,390
6 + 6 + 12 + 12 + 12 + 15	5,140	5,140	10,290	10,290	10,290	12,860	-	-	54,010	4,220
	5,710	5,710	11,430	11,430	11,430	14,290	-	-	60,000	4,190
6 + 6 + 12 + 12 + 12 + 18	4,910	4,910	9,820	9,820	9,820	14,730	-	-	54,010	3,930
	5,450	5,450	10,910	10,910	10,910	16,360	-	-	59,990	4,010
6 + 6 + 12 + 12 + 15 + 15	4,910	4,910	9,820	9,820	12,270	12,270	-	-	54,000	3,930
	5,450	5,450	10,910	10,910	13,640	13,640	-	-	60,000	4,010
6 + 6 + 12 + 12 + 15 + 18	4,700	4,700	9,390	9,390	11,740	14,090	-	-	54,010	3,680
	5,220	5,220	10,430	10,430	13,040	15,650	-	-	59,990	3,840
6 + 6 + 12 + 15 + 15 + 15	4,700	4,700	9,390	11,740	11,740	11,740	-	-	54,010	3,680
	5,220	5,220	10,430	13,040	13,040	13,040	-	-	59,990	3,840
6 + 9 + 9 + 9 + 9 + 9	6,000	9,000	9,000	9,000	9,000	9,000	-	-	51,000	5,620
	7,000	10,600	10,600	10,600	10,600	10,600	-	-	60,000	5,120
6 + 9 + 9 + 9 + 9 + 12	6,000	9,000	9,000	9,000	9,000	12,000	-	-	54,000	5,400
	6,630	10,030	10,030	10,030	10,030	13,250	-	-	60,000	4,850
6 + 9 + 9 + 9 + 9 + 15	5,680	8,530	8,530	8,530	8,530	14,210	-	-	54,010	4,940
	6,280	9,510	9,510	9,510	9,510	15,700	-	-	60,020	4,610
6 + 9 + 9 + 9 + 9 + 18										

MXZ-8B48NA OPERATION PERFORMANCE, contd.

Operation Performance for Indoor Unit Combinations (Unit A + Unit B + Unit C + Unit D + Unit E + Unit F + Unit G + Unit H)	Cooling Capacity (Btu/h)									
	Heating Capacity (Btu/h)									
	Unit A	Unit B	Unit C	Unit D	Unit E	Unit F	Unit G	Unit H	Total	Power Usage (W)
6 + 9 + 9 + 9 + 12 + 15	5,400	8,100	8,100	8,100	10,800	13,500	-	-	54,000	4,550
	5,980	9,050	9,050	9,050	11,950	14,940	-	-	60,020	4,390
6 + 9 + 9 + 9 + 12 + 18	5,140	7,710	7,710	7,710	10,290	15,430	-	-	53,990	4,220
	5,690	8,620	8,620	8,620	11,380	17,080	-	-	60,010	4,190
6 + 9 + 9 + 9 + 12 + 24	4,700	7,040	7,040	7,040	9,390	18,780	-	-	53,990	3,680
	5,200	7,870	7,870	7,870	10,400	20,790	-	-	60,000	3,840
6 + 9 + 9 + 9 + 15 + 15	5,140	7,710	7,710	7,710	12,860	12,860	-	-	53,990	4,220
	5,690	8,620	8,620	8,620	14,230	14,230	-	-	60,010	4,190
6 + 9 + 9 + 9 + 15 + 18	4,910	7,360	7,360	7,360	12,270	14,730	-	-	53,990	3,930
	5,430	8,230	8,230	8,230	13,580	16,300	-	-	60,000	4,010
6 + 9 + 9 + 9 + 18 + 18	4,700	7,040	7,040	7,040	14,090	14,090	-	-	54,000	3,680
	5,200	7,870	7,870	7,870	15,600	15,600	-	-	60,010	3,840
6 + 9 + 9 + 12 + 12 + 12	5,400	8,100	8,100	10,800	10,800	10,800	-	-	54,000	4,550
	5,980	9,060	9,060	11,970	11,970	11,970	-	-	60,010	4,390
6 + 9 + 9 + 12 + 12 + 15	5,140	7,710	7,710	10,290	10,290	12,860	-	-	54,000	4,220
	5,700	8,630	8,630	11,400	11,400	14,250	-	-	60,010	4,190
6 + 9 + 9 + 12 + 12 + 18	4,910	7,360	7,360	9,820	9,820	14,730	-	-	54,000	3,930
	5,440	8,240	8,240	10,880	10,880	16,320	-	-	60,000	4,010
6 + 9 + 9 + 12 + 15 + 15	4,910	7,360	7,360	9,820	12,270	12,270	-	-	53,990	3,930
	5,440	8,240	8,240	10,880	13,600	13,600	-	-	60,000	4,010
6 + 9 + 9 + 12 + 15 + 18	4,700	7,040	7,040	9,390	11,740	14,090	-	-	54,000	3,680
	5,200	7,880	7,880	10,410	13,010	15,610	-	-	59,990	3,840
6 + 9 + 9 + 15 + 15 + 15	4,700	7,040	7,040	11,740	11,740	11,740	-	-	54,000	3,680
	5,200	7,880	7,880	13,010	13,010	13,010	-	-	59,990	3,840
6 + 9 + 12 + 12 + 12 + 12	5,140	7,710	10,290	10,290	10,290	10,290	-	-	54,010	4,220
	5,710	8,640	11,410	11,410	11,410	11,410	-	-	59,990	4,190
6 + 9 + 12 + 12 + 12 + 15	4,910	7,360	9,820	9,820	9,820	12,270	-	-	54,000	3,930
	5,450	8,250	10,900	10,900	10,900	13,620	-	-	60,020	4,010
6 + 9 + 12 + 12 + 12 + 18	4,700	7,040	9,390	9,390	9,390	14,090	-	-	54,000	3,680
	5,210	7,890	10,420	10,420	10,420	15,630	-	-	59,990	3,840
6 + 9 + 12 + 12 + 15 + 15	4,700	7,040	9,390	9,390	11,740	11,740	-	-	54,000	3,680
	5,210	7,890	10,420	10,420	13,030	13,030	-	-	60,000	3,840
6 + 12 + 12 + 12 + 12 + 12	4,910	9,820	9,820	9,820	9,820	9,820	-	-	54,010	3,930
	5,450	10,910	10,910	10,910	10,910	10,910	-	-	60,000	4,010
6 + 12 + 12 + 12 + 12 + 15	4,700	9,390	9,390	9,390	9,390	11,740	-	-	54,000	3,680
	5,220	10,430	10,430	10,430	10,430	13,040	-	-	59,980	3,840
9 + 9 + 9 + 9 + 9 + 9	9,000	9,000	9,000	9,000	9,000	9,000	-	-	54,000	5,400
	10,000	10,000	10,000	10,000	10,000	10,000	-	-	60,000	4,850
9 + 9 + 9 + 9 + 9 + 12	8,530	8,530	8,530	8,530	8,530	11,370	-	-	54,020	4,940
	9,490	9,490	9,490	9,490	9,490	12,540	-	-	59,990	4,610
9 + 9 + 9 + 9 + 9 + 15	8,100	8,100	8,100	8,100	8,100	13,500	-	-	54,000	4,550
	9,020	9,020	9,020	9,020	9,020	14,900	-	-	60,000	4,390
9 + 9 + 9 + 9 + 9 + 18	7,710	7,710	7,710	7,710	7,710	15,430	-	-	53,980	4,220
	8,590	8,590	8,590	8,590	8,590	17,030	-	-	59,980	4,190
9 + 9 + 9 + 9 + 9 + 24	7,040	7,040	7,040	7,040	7,040	18,780	-	-	53,980	3,680
	7,850	7,850	7,850	7,850	7,850	20,740	-	-	59,990	3,840
9 + 9 + 9 + 9 + 12 + 12	8,100	8,100	8,100	8,100	10,800	10,800	-	-	54,000	4,550
	9,030	9,030	9,030	9,030	11,930	11,930	-	-	59,980	4,390
9 + 9 + 9 + 9 + 12 + 15	7,710	7,710	7,710	7,710	10,290	12,860	-	-	53,990	4,220
	8,610	8,610	8,610	8,610	11,370	14,210	-	-	60,020	4,190
9 + 9 + 9 + 9 + 12 + 18	7,360	7,360	7,360	7,360	9,820	14,730	-	-	53,990	3,930
	8,220	8,220	8,220	8,220	10,850	16,280	-	-	60,010	4,010
9 + 9 + 9 + 9 + 15 + 15	7,360	7,360	7,360	7,360	12,270	12,270	-	-	53,980	3,930
	8,220	8,220	8,220	8,220	13,570	13,570	-	-	60,020	4,010
9 + 9 + 9 + 9 + 15 + 18	7,040	7,040	7,040	7,040	11,740	14,090	-	-	53,990	3,680
	7,860	7,860	7,860	7,860	12,980	15,580	-	-	60,000	3,840
9 + 9 + 9 + 12 + 12 + 12	7,710	7,710	7,710	10,290	10,290	10,290	-	-	54,000	4,220
	8,620	8,620	8,620	11,380	11,380	11,380	-	-	60,000	4,190
9 + 9 + 9 + 12 + 12 + 15	7,360	7,360	7,360	9,820	9,820	12,270	-	-	53,990	3,930
	8,230	8,230	8,230	10,870	10,870	13,580	-	-	60,010	4,010
9 + 9 + 9 + 12 + 12 + 18	7,040	7,040	7,040	9,390	9,390	14,090	-	-	53,990	3,680
	7,870	7,870	7,870	10,400	10,400	15,600	-	-	60,010	3,840

MXZ-8B48NA OPERATION PERFORMANCE, contd.

Operation Performance for Indoor Unit Combinations (Unit A + Unit B + Unit C + Unit D + Unit E + Unit F + Unit G + Unit H)	Cooling Capacity (Btu/h)								Power Usage (W)	
	Heating Capacity (Btu/h)									
	Unit A	Unit B	Unit C	Unit D	Unit E	Unit F	Unit G	Unit H	Total	
9 + 9 + 9 + 12 + 15 + 15	7,040	7,040	7,040	9,390	11,740	11,740	-	-	53,990	3,680
	7,870	7,870	7,870	10,400	13,000	13,000	-	-	60,010	3,840
9 + 9 + 12 + 12 + 12 + 12	7,360	7,360	9,820	9,820	9,820	9,820	-	-	54,000	3,930
	8,240	8,240	10,880	10,880	10,880	10,880	-	-	60,000	4,010
9 + 9 + 12 + 12 + 12 + 15	7,040	7,040	9,390	9,390	9,390	11,740	-	-	53,990	3,680
	7,880	7,880	10,410	10,410	10,410	13,010	-	-	60,000	3,840
9 + 12 + 12 + 12 + 12 + 12	7,040	9,390	9,390	9,390	9,390	9,390	-	-	53,990	3,680
	7,890	10,420	10,420	10,420	10,420	10,420	-	-	59,990	3,840
6 + 6 + 6 + 6 + 6 + 6 + 6	6,000	6,000	6,000	6,000	6,000	6,000	6,000	-	42,000	4,510
	7,200	7,200	7,200	7,200	7,200	7,200	7,200	-	50,400	4,870
6 + 6 + 6 + 6 + 6 + 6 + 9	6,000	6,000	6,000	6,000	6,000	6,000	9,000	-	45,000	5,190
	7,200	7,200	7,200	7,200	7,200	7,200	10,900	-	54,100	5,060
6 + 6 + 6 + 6 + 6 + 6 + 12	6,000	6,000	6,000	6,000	6,000	6,000	12,000	-	48,000	5,900
	7,200	7,200	7,200	7,200	7,200	7,200	14,400	-	57,600	5,210
6 + 6 + 6 + 6 + 6 + 6 + 15	6,000	6,000	6,000	6,000	6,000	6,000	15,000	-	51,000	5,620
	7,060	7,060	7,060	7,060	7,060	7,060	17,650	-	60,010	5,120
6 + 6 + 6 + 6 + 6 + 6 + 18	6,000	6,000	6,000	6,000	6,000	6,000	18,000	-	54,000	5,400
	6,670	6,670	6,670	6,670	6,670	6,670	20,000	-	60,020	4,850
6 + 6 + 6 + 6 + 6 + 6 + 24	5,400	5,400	5,400	5,400	5,400	5,400	21,600	-	54,000	4,550
	6,000	6,000	6,000	6,000	6,000	6,000	24,000	-	60,000	4,390
6 + 6 + 6 + 6 + 6 + 9 + 9	6,000	6,000	6,000	6,000	6,000	9,000	9,000	-	48,000	5,900
	7,200	7,200	7,200	7,200	7,200	10,900	10,900	-	57,800	5,230
6 + 6 + 6 + 6 + 6 + 9 + 12	6,000	6,000	6,000	6,000	6,000	9,000	12,000	-	51,000	5,620
	7,050	7,050	7,050	7,050	7,050	10,670	14,090	-	60,010	5,120
6 + 6 + 6 + 6 + 6 + 9 + 15	6,000	6,000	6,000	6,000	6,000	9,000	15,000	-	54,000	5,400
	6,660	6,660	6,660	6,660	6,660	10,080	16,640	-	60,020	4,850
6 + 6 + 6 + 6 + 6 + 9 + 18	5,680	5,680	5,680	5,680	5,680	8,530	17,050	-	53,980	4,940
	6,310	6,310	6,310	6,310	6,310	9,550	18,920	-	60,020	4,610
6 + 6 + 6 + 6 + 6 + 9 + 24	5,140	5,140	5,140	5,140	5,140	7,710	20,570	-	53,980	4,220
	5,710	5,710	5,710	5,710	5,710	8,640	22,830	-	60,020	4,190
6 + 6 + 6 + 6 + 6 + 12 + 12	6,000	6,000	6,000	6,000	6,000	12,000	12,000	-	54,000	5,400
	6,670	6,670	6,670	6,670	6,670	13,330	13,330	-	60,010	4,850
6 + 6 + 6 + 6 + 6 + 12 + 15	5,680	5,680	5,680	5,680	5,680	11,370	14,210	-	53,980	4,940
	6,320	6,320	6,320	6,320	6,320	12,630	15,790	-	60,020	4,610
6 + 6 + 6 + 6 + 6 + 12 + 18	5,400	5,400	5,400	5,400	5,400	10,800	16,200	-	54,000	4,550
	6,000	6,000	6,000	6,000	6,000	12,000	18,000	-	60,000	4,390
6 + 6 + 6 + 6 + 6 + 12 + 24	4,910	4,910	4,910	4,910	4,910	9,820	19,640	-	54,010	3,930
	5,450	5,450	5,450	5,450	5,450	10,910	21,820	-	59,980	4,010
6 + 6 + 6 + 6 + 6 + 15 + 15	5,400	5,400	5,400	5,400	5,400	13,500	13,500	-	54,000	4,550
	6,000	6,000	6,000	6,000	6,000	15,000	15,000	-	60,000	4,390
6 + 6 + 6 + 6 + 6 + 15 + 18	5,140	5,140	5,140	5,140	5,140	12,860	15,430	-	53,990	4,220
	5,710	5,710	5,710	5,710	5,710	14,290	17,140	-	59,980	4,190
6 + 6 + 6 + 6 + 6 + 15 + 24	4,700	4,700	4,700	4,700	4,700	11,740	18,780	-	54,020	3,680
	5,220	5,220	5,220	5,220	5,220	13,040	20,870	-	60,010	3,840
6 + 6 + 6 + 6 + 6 + 18 + 18	4,910	4,910	4,910	4,910	4,910	14,730	14,730	-	54,010	3,930
	5,450	5,450	5,450	5,450	5,450	16,360	16,360	-	59,970	4,010
6 + 6 + 6 + 6 + 9 + 9 + 9	6,000	6,000	6,000	6,000	9,000	9,000	9,000	-	51,000	5,620
	7,020	7,020	7,020	7,020	10,630	10,630	10,630	-	59,970	5,120
6 + 6 + 6 + 6 + 9 + 9 + 12	6,000	6,000	6,000	6,000	9,000	9,000	12,000	-	54,000	5,400
	6,650	6,650	6,650	6,650	10,060	10,060	13,290	-	60,010	4,850
6 + 6 + 6 + 6 + 9 + 9 + 15	5,680	5,680	5,680	5,680	8,530	8,530	14,210	-	53,990	4,940
	6,300	6,300	6,300	6,300	9,530	9,530	15,740	-	60,000	4,610
6 + 6 + 6 + 6 + 9 + 9 + 18	5,400	5,400	5,400	5,400	8,100	8,100	16,200	-	54,000	4,550
	5,980	5,980	5,980	5,980	9,060	9,060	17,950	-	59,990	4,390
6 + 6 + 6 + 6 + 9 + 9 + 24	4,910	4,910	4,910	4,910	7,360	7,360	19,640	-	54,000	3,930
	5,440	5,440	5,440	5,440	8,240	8,240	21,760	-	60,000	4,010
6 + 6 + 6 + 6 + 9 + 12 + 12	5,680	5,680	5,680	5,680	8,530	11,370	11,370	-	53,990	4,940
	6,310	6,310	6,310	6,310	9,550	12,610	12,610	-	60,010	4,610
6 + 6 + 6 + 6 + 9 + 12 + 15	5,400	5,400	5,400	5,400	8,100	10,800	13,500	-	54,000	4,550
	5,990	5,990	5,990	5,990	9,070	11,980	14,980	-	59,990	4,390
6 + 6 + 6 + 6 + 9 + 12 + 18	5,140	5,140	5,140	5,140	7,710	10,290	15,430	-	53,990	4,220
	5,710	5,710	5,710	5,710	8,640	11,410	17,120	-	60,010	4,190

MXZ-8B48NA OPERATION PERFORMANCE, contd.

Operation Performance for Indoor Unit Combinations (Unit A + Unit B + Unit C + Unit D + Unit E + Unit F + Unit G + Unit H)	Cooling Capacity (Btu/h)								Total	Power Usage (W)
	Heating Capacity (Btu/h)									
	Unit A	Unit B	Unit C	Unit D	Unit E	Unit F	Unit G	Unit H		
6 + 6 + 6 + 6 + 9 + 12 + 24	4,700	4,700	4,700	4,700	7,040	9,390	18,780	-	54,010	3,680
	5,210	5,210	5,210	5,210	7,890	10,420	20,840	-	59,990	3,840
6 + 6 + 6 + 6 + 9 + 15 + 15	5,140	5,140	5,140	5,140	7,710	12,860	12,860	-	53,990	4,220
	5,710	5,710	5,710	5,710	8,640	14,270	14,270	-	60,020	4,190
6 + 6 + 6 + 6 + 9 + 15 + 18	4,910	4,910	4,910	4,910	7,360	12,270	14,730	-	54,000	3,930
	5,450	5,450	5,450	5,450	8,250	13,620	16,340	-	60,010	4,010
6 + 6 + 6 + 6 + 9 + 18 + 18	4,700	4,700	4,700	4,700	7,040	14,090	14,090	-	54,020	3,680
	5,210	5,210	5,210	5,210	7,890	15,630	15,630	-	59,990	3,840
6 + 6 + 6 + 6 + 12 + 12 + 12	5,400	5,400	5,400	5,400	10,800	10,800	10,800	-	54,000	4,550
	6,000	6,000	6,000	6,000	12,000	12,000	12,000	-	60,000	4,390
6 + 6 + 6 + 6 + 12 + 12 + 15	5,140	5,140	5,140	5,140	10,290	10,290	12,860	-	54,000	4,220
	5,710	5,710	5,710	5,710	11,430	11,430	14,290	-	59,990	4,190
6 + 6 + 6 + 6 + 12 + 12 + 18	4,910	4,910	4,910	4,910	9,820	9,820	14,730	-	54,010	3,930
	5,450	5,450	5,450	5,450	10,910	10,910	16,360	-	59,980	4,010
6 + 6 + 6 + 6 + 12 + 15 + 15	4,910	4,910	4,910	4,910	9,820	12,270	12,270	-	54,000	3,930
	5,450	5,450	5,450	5,450	10,910	13,640	13,640	-	59,990	4,010
6 + 6 + 6 + 6 + 12 + 15 + 18	4,700	4,700	4,700	4,700	9,390	11,740	14,090	-	54,020	3,680
	5,220	5,220	5,220	5,220	10,430	13,040	15,650	-	60,000	3,840
6 + 6 + 6 + 6 + 15 + 15 + 15	4,700	4,700	4,700	4,700	11,740	11,740	11,740	-	54,020	3,680
	5,220	5,220	5,220	5,220	13,040	13,040	13,040	-	60,000	3,840
6 + 6 + 6 + 9 + 9 + 9 + 9	6,000	6,000	6,000	9,000	9,000	9,000	9,000	-	54,000	5,400
	6,630	6,630	6,630	10,030	10,030	10,030	10,030	-	60,010	4,850
6 + 6 + 6 + 9 + 9 + 9 + 12	5,680	5,680	5,680	8,530	8,530	8,530	11,370	-	54,000	4,940
	6,290	6,290	6,290	9,520	9,520	9,520	12,580	-	60,010	4,610
6 + 6 + 6 + 9 + 9 + 9 + 15	5,400	5,400	5,400	8,100	8,100	8,100	13,500	-	54,000	4,550
	5,980	5,980	5,980	9,050	9,050	9,050	14,940	-	60,030	4,390
6 + 6 + 6 + 9 + 9 + 9 + 18	5,140	5,140	5,140	7,710	7,710	7,710	15,430	-	53,980	4,220
	5,690	5,690	5,690	8,620	8,620	8,620	17,080	-	60,010	4,190
6 + 6 + 6 + 9 + 9 + 9 + 24	4,700	4,700	4,700	7,040	7,040	7,040	18,780	-	54,000	3,680
	5,200	5,200	5,200	7,870	7,870	7,870	20,790	-	60,000	3,840
6 + 6 + 6 + 9 + 9 + 12 + 12	5,400	5,400	5,400	8,100	8,100	10,800	10,800	-	54,000	4,550
	5,980	5,980	5,980	9,060	9,060	11,970	11,970	-	60,000	4,390
6 + 6 + 6 + 9 + 9 + 12 + 15	5,140	5,140	5,140	7,710	7,710	10,290	12,860	-	53,990	4,220
	5,700	5,700	5,700	8,630	8,630	11,400	14,250	-	60,010	4,190
6 + 6 + 6 + 9 + 9 + 12 + 18	4,910	4,910	4,910	7,360	7,360	9,820	14,730	-	54,000	3,930
	5,440	5,440	5,440	8,240	8,240	10,880	16,320	-	60,000	4,010
6 + 6 + 6 + 9 + 9 + 15 + 15	4,910	4,910	4,910	7,360	7,360	12,270	12,270	-	53,990	3,930
	5,440	5,440	5,440	8,240	8,240	13,600	13,600	-	60,000	4,010
6 + 6 + 6 + 9 + 9 + 15 + 18	4,700	4,700	4,700	7,040	7,040	11,740	14,090	-	54,010	3,680
	5,200	5,200	5,200	7,880	7,880	13,010	15,610	-	59,980	3,840
6 + 6 + 6 + 9 + 12 + 12 + 12	5,140	5,140	5,140	7,710	10,290	10,290	12,860	-	54,000	4,220
	5,710	5,710	5,710	8,640	11,410	11,410	11,410	-	60,000	4,190
6 + 6 + 6 + 9 + 12 + 12 + 15	4,910	4,910	4,910	7,360	9,820	9,820	12,270	-	54,000	3,930
	5,450	5,450	5,450	8,250	10,900	10,900	13,620	-	60,020	4,010
6 + 6 + 6 + 9 + 12 + 12 + 18	4,700	4,700	4,700	7,040	9,390	9,390	14,090	-	54,010	3,680
	5,210	5,210	5,210	7,890	10,420	10,420	15,630	-	59,990	3,840
6 + 6 + 6 + 9 + 12 + 15 + 15	4,700	4,700	4,700	7,040	9,390	11,740	11,740	-	54,010	3,680
	5,210	5,210	5,210	7,890	10,420	13,030	13,030	-	60,000	3,840
6 + 6 + 6 + 12 + 12 + 12 + 12	4,910	4,910	4,910	9,820	9,820	9,820	9,820	-	54,010	3,930
	5,450	5,450	5,450	10,910	10,910	10,910	10,910	-	59,990	4,010
6 + 6 + 6 + 12 + 12 + 12 + 15	4,700	4,700	4,700	9,390	9,390	9,390	11,740	-	54,010	3,680
	5,220	5,220	5,220	10,430	10,430	10,430	13,040	-	59,990	3,840
6 + 6 + 9 + 9 + 9 + 9 + 9	5,680	5,680	8,530	8,530	8,530	8,530	8,530	-	54,010	4,940
	6,270	6,270	9,490	9,490	9,490	9,490	9,490	-	59,990	4,610
6 + 6 + 9 + 9 + 9 + 9 + 12	5,400	5,400	8,100	8,100	8,100	8,100	10,800	-	54,000	4,550
	5,970	5,970	9,030	9,030	9,030	9,030	11,930	-	59,990	4,390
6 + 6 + 9 + 9 + 9 + 9 + 15	5,140	5,140	7,710	7,710	7,710	7,710	12,860	-	53,980	4,220
	5,680	5,680	8,610	8,610	8,610	8,610	14,210	-	60,010	4,190
6 + 6 + 9 + 9 + 9 + 9 + 18	4,910	4,910	7,360	7,360	7,360	7,360	14,730	-	53,990	3,930
	5,430	5,430	8,220	8,220	8,220	8,220	16,280	-	60,020	4,010
6 + 6 + 9 + 9 + 9 + 12 + 12	5,140	5,140	7,710	7,710	7,710	10,290	10,290	-	53,990	4,220
	5,690	5,690	8,620	8,620	8,620	11,380	11,380	-	60,000	4,190

MXZ-8B48NA OPERATION PERFORMANCE, contd.

Operation Performance for Indoor Unit Combinations (Unit A + Unit B + Unit C + Unit D + Unit E + Unit F + Unit G + Unit H)	Cooling Capacity (Btu/h)									
	Heating Capacity (Btu/h)									
	Unit A	Unit B	Unit C	Unit D	Unit E	Unit F	Unit G	Unit H	Total	Power Usage (W)
6 + 6 + 9 + 9 + 9 + 12 + 15	4,910	4,910	7,360	7,360	7,360	9,820	12,270	-	53,990	3,930
	5,430	5,430	8,230	8,230	8,230	10,870	13,580	-	60,000	4,010
6 + 6 + 9 + 9 + 9 + 12 + 18	4,700	4,700	7,040	7,040	7,040	9,390	14,090	-	54,000	3,680
	5,200	5,200	7,870	7,870	7,870	10,400	15,600	-	60,010	3,840
6 + 6 + 9 + 9 + 9 + 15 + 15	4,700	4,700	7,040	7,040	7,040	11,740	11,740	-	54,000	3,680
	5,200	5,200	7,870	7,870	7,870	13,000	13,000	-	60,010	3,840
6 + 6 + 9 + 9 + 12 + 12 + 12	4,910	4,910	7,360	7,360	9,820	9,820	9,820	-	54,000	3,930
	5,440	5,440	8,240	8,240	10,880	10,880	10,880	-	60,000	4,010
6 + 6 + 9 + 9 + 12 + 12 + 15	4,700	4,700	7,040	7,040	9,390	9,390	11,740	-	54,000	3,680
	5,200	5,200	7,880	7,880	10,410	10,410	13,010	-	59,990	3,840
6 + 6 + 9 + 12 + 12 + 12 + 12	4,700	4,700	7,040	9,390	9,390	9,390	9,390	-	54,000	3,680
	5,210	5,210	7,890	10,420	10,420	10,420	10,420	-	59,990	3,840
6 + 9 + 9 + 9 + 9 + 9 + 9	5,400	8,100	8,100	8,100	8,100	8,100	8,100	-	54,000	4,550
	5,950	9,010	9,010	9,010	9,010	9,010	9,010	-	60,010	4,390
6 + 9 + 9 + 9 + 9 + 9 + 12	5,140	7,710	7,710	7,710	7,710	7,710	10,290	-	53,980	4,220
	5,680	8,590	8,590	8,590	8,590	8,590	11,350	-	59,980	4,190
6 + 9 + 9 + 9 + 9 + 9 + 15	4,910	7,360	7,360	7,360	7,360	7,360	12,270	-	53,980	3,930
	5,420	8,210	8,210	8,210	8,210	8,210	13,550	-	60,020	4,010
6 + 9 + 9 + 9 + 9 + 9 + 18	4,700	7,040	7,040	7,040	7,040	7,040	14,090	-	53,990	3,680
	5,190	7,850	7,850	7,850	7,850	7,850	15,560	-	60,000	3,840
6 + 9 + 9 + 9 + 9 + 12 + 12	4,910	7,360	7,360	7,360	7,360	9,820	9,820	-	53,990	3,930
	5,430	8,220	8,220	8,220	8,220	10,850	10,850	-	60,010	4,010
6 + 9 + 9 + 9 + 9 + 12 + 15	4,700	7,040	7,040	7,040	7,040	9,390	11,740	-	53,990	3,680
	5,190	7,860	7,860	7,860	7,860	10,380	12,980	-	59,990	3,840
6 + 9 + 9 + 9 + 12 + 12 + 12	4,700	7,040	7,040	7,040	9,390	9,390	9,390	-	53,990	3,680
	5,200	7,870	7,870	7,870	10,400	10,400	10,400	-	60,010	3,840
9 + 9 + 9 + 9 + 9 + 9 + 9	7,710	7,710	7,710	7,710	7,710	7,710	7,710	-	53,970	4,220
	8,570	8,570	8,570	8,570	8,570	8,570	8,570	-	59,990	4,190
9 + 9 + 9 + 9 + 9 + 9 + 12	7,360	7,360	7,360	7,360	7,360	7,360	9,820	-	53,980	3,930
	8,200	8,200	8,200	8,200	8,200	8,200	10,830	-	60,030	4,010
9 + 9 + 9 + 9 + 9 + 9 + 15	7,040	7,040	7,040	7,040	7,040	7,040	11,740	-	53,980	3,680
	7,840	7,840	7,840	7,840	7,840	7,840	12,950	-	59,990	3,840
9 + 9 + 9 + 9 + 9 + 12 + 12	7,040	7,040	7,040	7,040	7,040	9,390	9,390	-	53,980	3,680
	7,850	7,850	7,850	7,850	7,850	10,370	10,370	-	59,990	3,840
6 + 6 + 6 + 6 + 6 + 6 + 6 + 6	6,000	6,000	6,000	6,000	6,000	6,000	6,000	6,000	48,000	5,900
	7,200	7,200	7,200	7,200	7,200	7,200	7,200	7,200	57,600	5,210
6 + 6 + 6 + 6 + 6 + 6 + 6 + 9	6,000	6,000	6,000	6,000	6,000	6,000	6,000	9,000	51,000	5,620
	7,050	7,050	7,050	7,050	7,050	7,050	7,050	10,670	60,020	5,120
6 + 6 + 6 + 6 + 6 + 6 + 6 + 12	6,000	6,000	6,000	6,000	6,000	6,000	6,000	12,000	54,000	5,400
	6,670	6,670	6,670	6,670	6,670	6,670	6,670	13,330	60,020	4,850
6 + 6 + 6 + 6 + 6 + 6 + 6 + 15	5,680	5,680	5,680	5,680	5,680	5,680	5,680	14,210	53,970	4,930
	6,320	6,320	6,320	6,320	6,320	6,320	6,320	15,790	60,030	4,610
6 + 6 + 6 + 6 + 6 + 6 + 6 + 18	5,400	5,400	5,400	5,400	5,400	5,400	5,400	16,200	54,000	4,550
	6,000	6,000	6,000	6,000	6,000	6,000	6,000	18,000	60,000	4,390
6 + 6 + 6 + 6 + 6 + 6 + 6 + 24	4,910	4,910	4,910	4,910	4,910	4,910	4,910	19,640	54,010	3,930
	5,450	5,450	5,450	5,450	5,450	5,450	5,450	21,820	59,970	4,010
6 + 6 + 6 + 6 + 6 + 6 + 9 + 9	6,000	6,000	6,000	6,000	6,000	6,000	9,000	9,000	54,000	5,400
	6,650	6,650	6,650	6,650	6,650	6,650	10,060	10,060	60,020	4,850
6 + 6 + 6 + 6 + 6 + 6 + 9 + 12	5,680	5,680	5,680	5,680	5,680	5,680	8,530	11,370	53,980	4,940
	6,310	6,310	6,310	6,310	6,310	6,310	9,550	12,610	60,020	4,610
6 + 6 + 6 + 6 + 6 + 6 + 9 + 15	5,400	5,400	5,400	5,400	5,400	5,400	8,100	13,500	54,000	4,550
	5,990	5,990	5,990	5,990	5,990	5,990	9,070	14,980	59,990	4,390
6 + 6 + 6 + 6 + 6 + 6 + 9 + 18	5,140	5,140	5,140	5,140	5,140	5,140	7,710	15,430	53,980	4,220
	5,710	5,710	5,710	5,710	5,710	5,710	8,640	17,120	60,020	4,190
6 + 6 + 6 + 6 + 6 + 6 + 9 + 24	4,700	4,700	4,700	4,700	4,700	4,700	7,040	18,780	54,020	3,680
	5,210	5,210	5,210	5,210	5,210	5,210	7,890	20,840	59,990	3,840
6 + 6 + 6 + 6 + 6 + 6 + 12 + 12	5,400	5,400	5,400	5,400	5,400	5,400	10,800	10,800	54,000	4,550
	6,000	6,000	6,000	6,000	6,000	6,000	12,000	12,000	60,000	4,390
6 + 6 + 6 + 6 + 6 + 6 + 12 + 15	5,140	5,140	5,140	5,140	5,140	5,140	10,290	12,860	53,990	4,220
	5,710	5,710	5,710	5,710	5,710	5,710	11,430	14,290	59,980	4,190
6 + 6 + 6 + 6 + 6 + 6 + 12 + 18	4,910	4,910	4,910	4,910	4,910	4,910	9,820	14,730	54,010	3,930
	5,450	5,450	5,450	5,450	5,450	5,450	10,910	16,360	59,970	4,010

MXZ-8B48NA OPERATION PERFORMANCE, contd.

Operation Performance for Indoor Unit Combinations (Unit A + Unit B + Unit C + Unit D + Unit E + Unit F + Unit G + Unit H)	Cooling Capacity (Btu/h)									
	Heating Capacity (Btu/h)									
	Unit A	Unit B	Unit C	Unit D	Unit E	Unit F	Unit G	Unit H	Total	Power Usage (W)
6 + 6 + 6 + 6 + 6 + 6 + 6 + 15 + 15	4,910	4,910	4,910	4,910	4,910	4,910	12,270	12,270	54,000	3,930
	5,450	5,450	5,450	5,450	5,450	5,450	13,640	13,640	59,980	4,010
6 + 6 + 6 + 6 + 6 + 6 + 6 + 15 + 18	4,700	4,700	4,700	4,700	4,700	4,700	11,740	14,090	54,030	3,680
	5,220	5,220	5,220	5,220	5,220	5,220	13,040	15,650	60,010	3,840
6 + 6 + 6 + 6 + 6 + 9 + 9 + 9	5,680	5,680	5,680	5,680	5,680	8,530	8,530	8,530	53,990	4,940
	6,290	6,290	6,290	6,290	6,290	9,520	9,520	9,520	60,010	4,610
6 + 6 + 6 + 6 + 6 + 9 + 9 + 12	5,400	5,400	5,400	5,400	5,400	8,100	8,100	10,800	54,000	4,550
	5,980	5,980	5,980	5,980	5,980	9,060	9,060	11,970	59,990	4,390
6 + 6 + 6 + 6 + 6 + 9 + 9 + 15	5,140	5,140	5,140	5,140	5,140	7,710	7,710	12,860	53,980	4,220
	5,700	5,700	5,700	5,700	5,700	8,630	8,630	14,250	60,010	4,190
6 + 6 + 6 + 6 + 6 + 9 + 9 + 18	4,910	4,910	4,910	4,910	4,910	7,360	7,360	14,730	54,000	3,930
	5,440	5,440	5,440	5,440	5,440	8,240	8,240	16,320	60,000	4,010
6 + 6 + 6 + 6 + 6 + 9 + 12 + 12	5,140	5,140	5,140	5,140	5,140	7,710	10,290	10,290	53,990	4,220
	5,710	5,710	5,710	5,710	5,710	8,640	11,410	11,410	60,010	4,190
6 + 6 + 6 + 6 + 6 + 9 + 12 + 15	4,910	4,910	4,910	4,910	4,910	7,360	9,820	12,270	54,000	3,930
	5,450	5,450	5,450	5,450	5,450	8,250	10,900	13,620	60,020	4,010
6 + 6 + 6 + 6 + 6 + 9 + 12 + 18	4,700	4,700	4,700	4,700	4,700	7,040	9,390	14,090	54,020	3,680
	5,210	5,210	5,210	5,210	5,210	7,890	10,420	15,630	59,990	3,840
6 + 6 + 6 + 6 + 6 + 9 + 15 + 15	4,700	4,700	4,700	4,700	4,700	7,040	11,740	11,740	54,020	3,680
	5,210	5,210	5,210	5,210	5,210	7,890	13,030	13,030	60,000	3,840
6 + 6 + 6 + 6 + 6 + 12 + 12 + 12	4,910	4,910	4,910	4,910	4,910	9,820	9,820	9,820	54,010	3,930
	5,450	5,450	5,450	5,450	5,450	10,910	10,910	10,910	59,980	4,010
6 + 6 + 6 + 6 + 6 + 12 + 12 + 15	4,700	4,700	4,700	4,700	4,700	9,390	9,390	11,740	54,020	3,680
	5,220	5,220	5,220	5,220	5,220	10,430	10,430	13,040	60,000	3,840
6 + 6 + 6 + 6 + 9 + 9 + 9 + 9	5,400	5,400	5,400	5,400	8,100	8,100	8,100	8,100	54,000	4,550
	5,970	5,970	5,970	5,970	9,030	9,030	9,030	9,030	60,000	4,390
6 + 6 + 6 + 6 + 9 + 9 + 9 + 12	5,140	5,140	5,140	5,140	7,710	7,710	7,710	10,290	53,980	4,220
	5,690	5,690	5,690	5,690	8,620	8,620	8,620	11,380	60,000	4,190
6 + 6 + 6 + 6 + 9 + 9 + 9 + 15	4,910	4,910	4,910	4,910	7,360	7,360	7,360	12,270	53,990	3,930
	5,430	5,430	5,430	5,430	8,230	8,230	8,230	13,580	59,990	4,010
6 + 6 + 6 + 6 + 9 + 9 + 9 + 18	4,700	4,700	4,700	4,700	7,040	7,040	7,040	14,090	54,010	3,680
	5,200	5,200	5,200	5,200	7,870	7,870	7,870	15,600	60,010	3,840
6 + 6 + 6 + 6 + 9 + 9 + 12 + 12	4,910	4,910	4,910	4,910	7,360	7,360	9,820	9,820	54,000	3,930
	5,440	5,440	5,440	5,440	8,240	8,240	10,880	10,880	60,000	4,010
6 + 6 + 6 + 6 + 9 + 9 + 12 + 15	4,700	4,700	4,700	4,700	7,040	7,040	9,390	11,740	54,010	3,680
	5,200	5,200	5,200	5,200	7,880	7,880	10,410	13,010	59,980	3,840
6 + 6 + 6 + 6 + 9 + 12 + 12 + 12	4,700	4,700	4,700	4,700	7,040	9,390	9,390	9,390	54,010	3,680
	5,210	5,210	5,210	5,210	7,890	10,420	10,420	10,420	59,990	3,840
6 + 6 + 6 + 9 + 9 + 9 + 9 + 9	5,140	5,140	5,140	7,710	7,710	7,710	7,710	7,710	53,970	4,220
	5,680	5,680	5,680	8,590	8,590	8,590	8,590	8,590	59,990	4,190
6 + 6 + 6 + 9 + 9 + 9 + 9 + 12	4,910	4,910	4,910	7,360	7,360	7,360	7,360	9,820	53,990	3,930
	5,430	5,430	5,430	8,220	8,220	8,220	8,220	10,850	60,020	4,010
6 + 6 + 6 + 9 + 9 + 9 + 9 + 15	4,700	4,700	4,700	7,040	7,040	7,040	7,040	11,740	54,000	3,680
	5,190	5,190	5,190	7,860	7,860	7,860	7,860	12,980	59,990	3,840
6 + 6 + 6 + 9 + 9 + 9 + 12 + 12	4,700	4,700	4,700	7,040	7,040	7,040	9,390	9,390	54,000	3,680
	5,200	5,200	5,200	7,870	7,870	7,870	10,400	10,400	60,010	3,840
6 + 6 + 9 + 9 + 9 + 9 + 9 + 9	4,910	4,910	7,360	7,360	7,360	7,360	7,360	7,360	53,980	3,930
	5,410	5,410	8,200	8,200	8,200	8,200	8,200	8,200	60,020	4,010
6 + 6 + 9 + 9 + 9 + 9 + 9 + 12	4,700	4,700	7,040	7,040	7,040	7,040	7,040	9,390	53,990	3,680
	5,190	5,190	7,850	7,850	7,850	7,850	7,850	10,370	60,000	3,840
6 + 9 + 9 + 9 + 9 + 9 + 9 + 9	4,700	7,040	7,040	7,040	7,040	7,040	7,040	7,040	53,980	3,680
	5,170	7,830	7,830	7,830	7,830	7,830	7,830	7,830	59,980	3,840

DIMENSIONS: PAC-AKA51BC AND PAC-AKA31BC BRANCH BOXES

PAC-AKA51BC

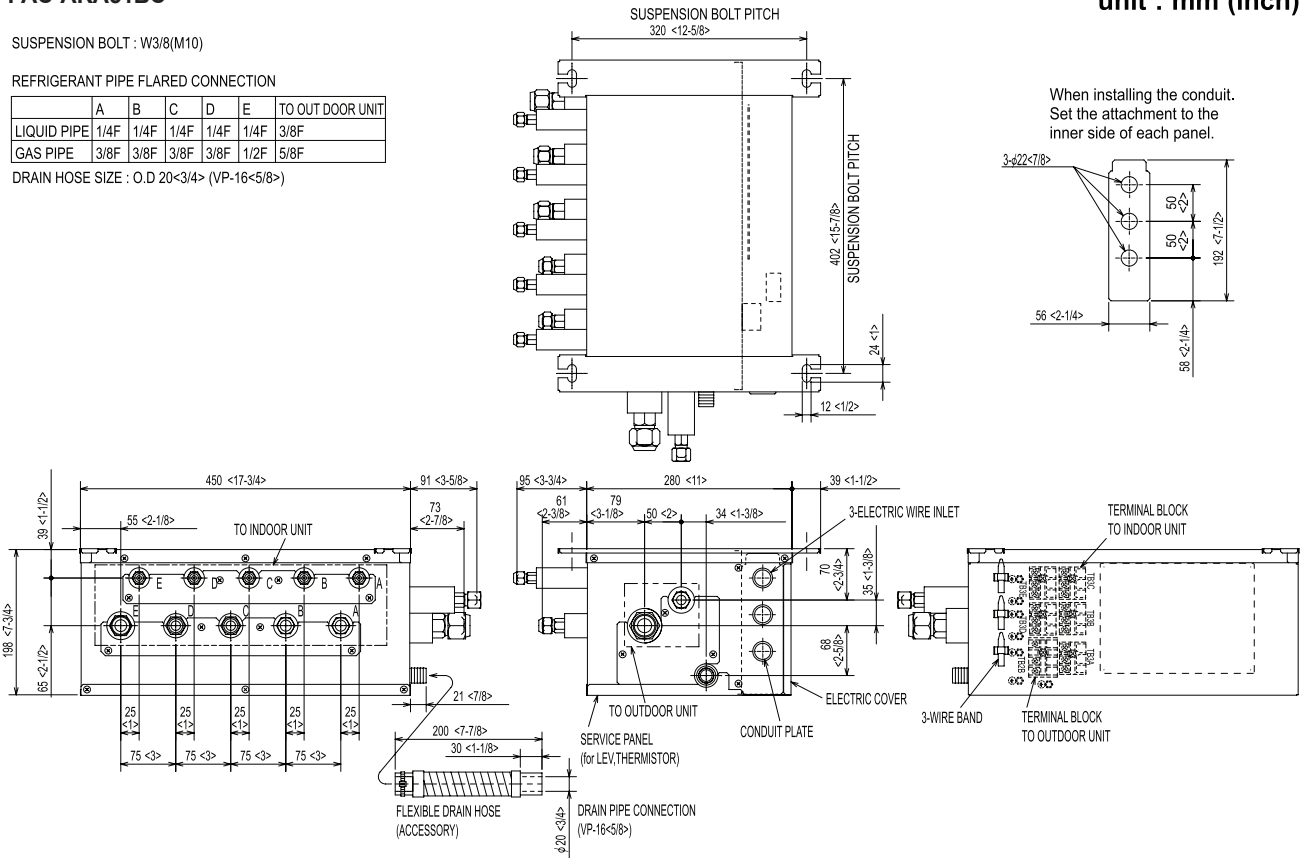
SUSPENSION BOLT : W3/8(M10)

REFRIGERANT PIPE FLARED CONNECTION

	A	B	C	D	E	TO OUT DOOR UNIT
LIQUID PIPE	1/4F	1/4F	1/4F	1/4F	1/4F	3/8F
GAS PIPE	3/8F	3/8F	3/8F	3/8F	1/2F	5/8F

DRAIN HOSE SIZE : O.D 20<3/4> (VP-16<5/8>)

unit : mm (inch)



PAC-AKA31BC

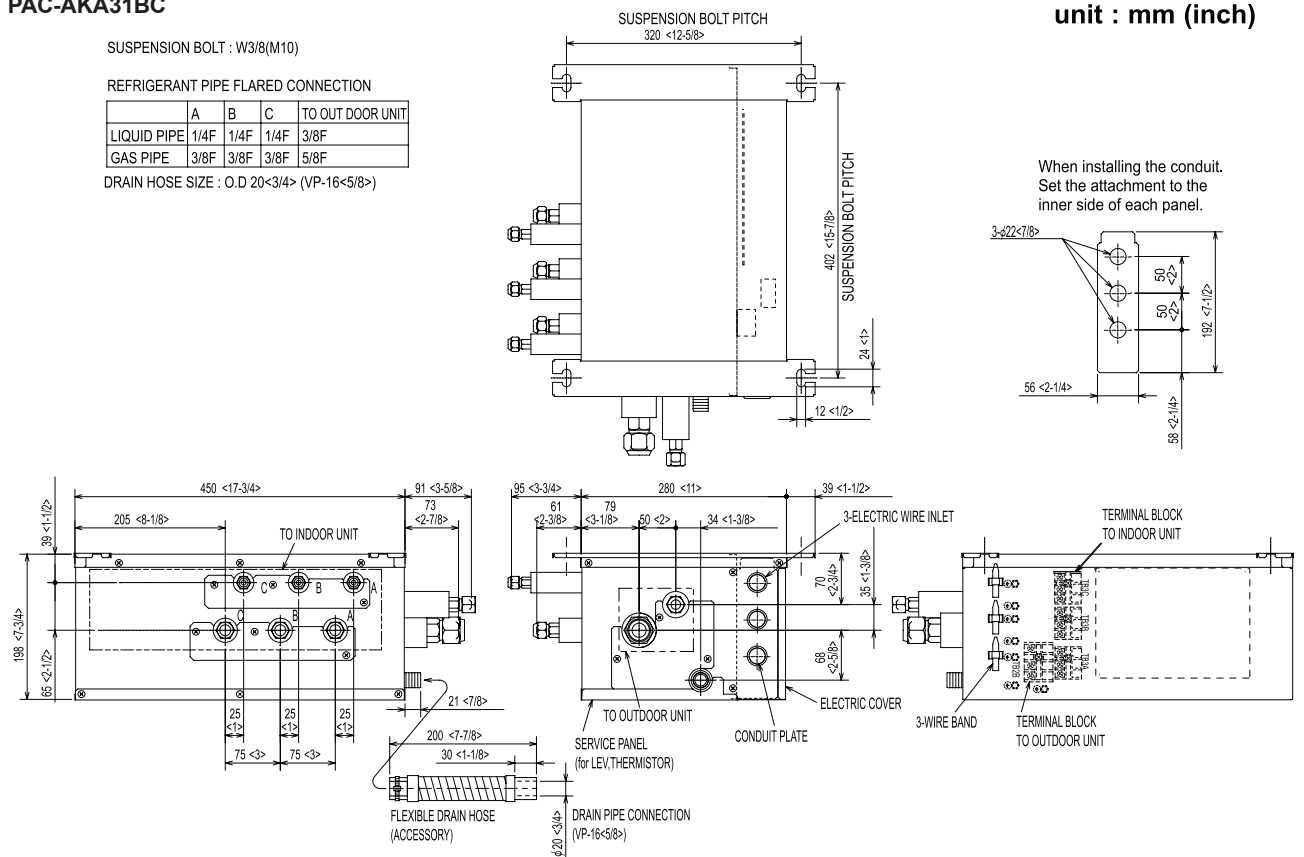
SUSPENSION BOLT : W3/8(M10)

REFRIGERANT PIPE FLARED CONNECTION

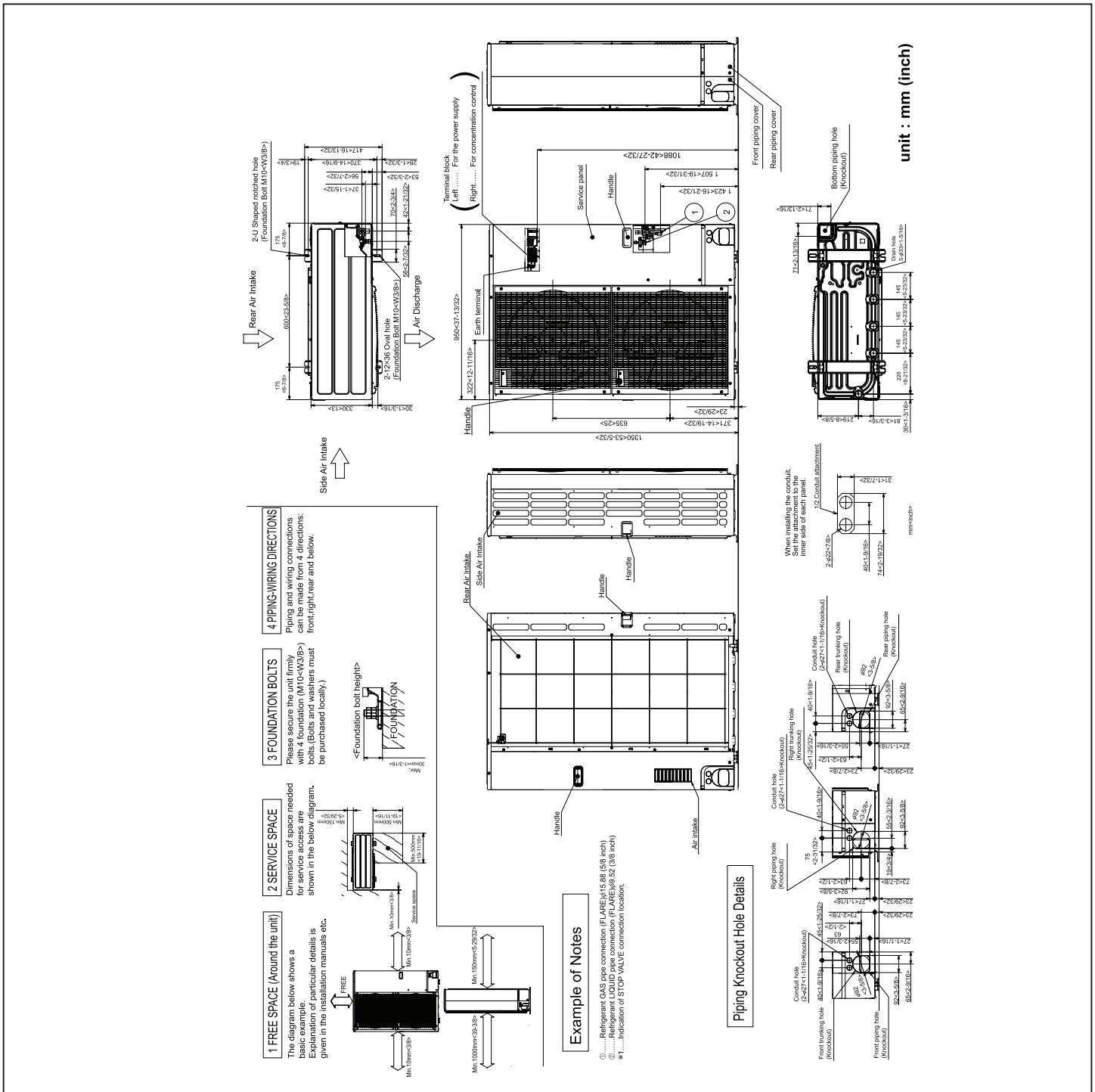
	A	B	C	TO OUT DOOR UNIT
LIQUID PIPE	1/4F	1/4F	1/4F	3/8F
GAS PIPE	3/8F	3/8F	3/8F	5/8F

DRAIN HOSE SIZE : O.D 20<3/4> (VP-16<5/8>)

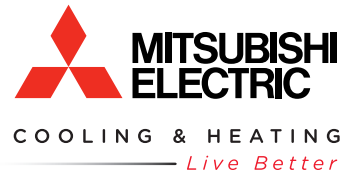
unit : mm (inch)



DIMENSIONS: MXZ-8B48NA



Intertek



3400 Lawrenceville Suwanee Rd
 Suwanee, GA 30024
 Tele: 678-376-2900 • Fax: 800-889-9904
 Toll Free: 800-433-4822 (#3)
 www.mehvac.com
Specifications are subject to change without notice.