

GENERAL NOTES

- GENERAL**
- IT IS THE RESPONSIBILITY OF THE DESIGN-BUILDER TO PRODUCE ALL WORK IN COMPLIANCE WITH THE INTERNATIONAL BUILDING CODE (IBC), GENERAL CONDITIONS OF THE CONTRACT FOR CONSTRUCTION, RECOGNIZED INDUSTRY STANDARDS, LOCAL CRAFTSMANSHIP STANDARDS, ALL MANUFACTURERS' RECOMMENDATIONS, AND ALL OTHER APPLICABLE CODES.
 - PROVIDE ACCESSIBILITY FOR THE PHYSICALLY HANDICAPPED CONFORMING TO THE AMERICANS WITH DISABILITIES ACT ACCESSIBILITY GUIDELINES (ADAAG).
 - THE READINESS CENTER HAS BEEN DESIGNED IN ACCORDANCE WITH CODES AND REGULATIONS OUTLINED ON LIFE SAFETY SHEETS AND IN SPECIFICATIONS.
 - MATERIAL SELECTIONS FOR THE FIRST FLOOR MUST BE SENSITIVE TO THE DURABILITY OF PRODUCTS IN RESPONSE TO THE POSSIBILITY OF A FLOOD EVENT.
 - ALL OPEN CELLS OF CMU MUST BE FILLED SOLID WITH CONCRETE GROUT TO 8'-0" AFF TO ELIMINATE POCKETS FOR WATER ENTRAPMENT.
 - ALL CONDUIT, WIRING, CIRCUITRY, CONTROL WIRING, ETC. MUST ORIGINATE FROM THE UPPER FLOORS AND BRANCH DOWN TO A MINIMUM 54" ABOVE THE FIRST FLOOR OR TO MEET ADA REQUIREMENTS, EXCEPT MAIN DISTRIBUTION FEEDERS.
 - REFER TO FINISH SCHEDULE AND THE GUIDELINES OF DG 415-1 (2005) FOR FINISHES IN ALL SPACES, ESPECIALLY ON THE FIRST FLOOR. NON-DURABLE SURFACES ON THE FIRST FLOOR HAVE BEEN ADDED IN SOME AREAS AS NOISE REDUCTION MATERIALS WHICH CAN EASILY BE REPLACED.
 - ALL STEEL COLUMNS ON THE FIRST FLOOR SHALL BE ENCASED IN MATCHING CMU AND FILLED SOLID WITH CONCRETE GROUT TO ELIMINATE ANY POCKETS THAT MAY ENTRAP WATER.
 - THE DESIGN-BUILDER SHALL COORDINATE ALL ASPECTS OF THE DESIGN AND CONSTRUCTION AS IT RELATES TO ADJACENT PROJECT DEVELOPMENT. SPECIFICALLY, CAREFUL COORDINATION WILL BE REQUIRED TO DESIGN A UNIFIED DRILL PLAZA BETWEEN THE ASSEMBLY HALLS OF THIS PROJECT AND OF THE 61st R.C. TO THE SOUTH.

FIRE PROTECTION NOTES

- THIS PROJECT SHALL CONTAIN AN AUTOMATIC SPRINKLER SYSTEM DESIGNED BY A MECHANICAL ENGINEER LICENSED IN THE STATE OF LOUISIANA WHO WILL SERVE AS "PROFESSIONAL OF RECORD" FOR THE FIRE PROTECTION SYSTEM.
- THE FIRE PROTECTION SYSTEM SHALL COMPLY WITH ALL APPLICABLE FEDERAL, STATE, AND LOCAL CODES, REGULATIONS AND STANDARDS.
- FIRE BARRIERS SHALL BE CONTINUOUS FROM OUTSIDE WALL TO OUTSIDE WALL, FROM FLOOR TO UNDERSIDE OF FLOOR/ROOF DECK ABOVE, FROM ONE FIRE BARRIER TO ANOTHER FIRE BARRIER, OR A COMBINATION THEREOF AND SHALL BE CONTINUOUS THROUGH ALL CONCEALED AND INTERSTITIAL SPACES (SUCH AS THOSE FOUND ABOVE A CEILING).
- PASSAGES OF PIPES, CONDUITS, BUS DUCTS, CABLES, WIRES, AIR DUCTS, PNEUMATIC DUCTS, AND SIMILAR BUILDING SERVICES EQUIPMENT THROUGH FIRE BARRIERS SHALL BE PROTECTED AS FOLLOWS:
 - THE SPACE BETWEEN PENETRATING ITEM AND FIRE BARRIER SHALL BE FILLED WITH A MATERIAL CAPABLE OF MAINTAIN THE FIRE RESISTANCE RATING OF THE FIRE BARRIER PRODUCT. PRODUCT USED MUST MEET TEST METHODS ASTM E814 OR UL 1479 FOR FIRE RATING.
 - FIRE BARRIER SHALL BE EFFECTIVELY AND PERMANENTLY IDENTIFIED WITH 1" STENCILING (AT 10' ON CENTER) ABOVE ANY DECORATIVE CEILING AND CONCEALED SPACES WITH THE FOLLOWING:
 FIRE / SMOKE BARRIER
 PROTECT ALL OPENINGS
 (INCLUDE HOURLY RATING IN TEXT)
- PROVIDE FIRE EXTINGUISHERS CABINETS (FIRE EXTINGUISHERS PROVIDED BY OWNER) WHERE INDICATED, AS SPECIFIED AND NOTED ON THE DRAWINGS. CABINETS AND MOUNTING SHALL CONFORM TO THE LATEST REVISION TO THE ADAAG. NUMBER SHALL BE DETERMINED IN ACCORDANCE WITH NFPA 10.
- WHEN A BEAM OR COLUMN BECOMES PART OF FIRE RATED WALL OR CEILING, IT MUST BE PROTECTED AND BE FIRE RATED AS IS THE WALL OR CEILING.

ACCESSIBILITY AND EGRESS NOTES

- CONTRACTOR TO VERIFY ALL DOORS, OPENINGS, SLOPES, TOILET ROOMS, ACCESSIBLE ROUTES, ETC. COMPLY WITH THE LATEST REVISIONS OF ADAAG.
- DOORS IN EXITS SHALL NOT BE SUBJECT TO THE USE OF A KEY, TWISTING MOTION, OR SPECIAL KNOWLEDGE FOR OPERATION FROM THE INSIDE OF THE BUILDING.
- EVERY INTERIOR AND EXTERIOR DOOR IN THE BUILDING SHALL BE PROVIDED WITH HANDICAP HARDWARE (LEVERS, PANIC HARDWARE, OR U-SHAPED DESIGNED DEVICES, ETC.) PER ADAAG SECTION 4.13.9, UNLESS PROHIBITED BY NATIONAL GUARD DESIGN CRITERIA FOR SECURITY REASONS.
- PARKING SPACES SHALL NOT OBSTRUCT REQUIRED EXITS.
- AISLES LEADING TO REQUIRED EXITS SHALL HAVE A MINIMUM CLEAR WIDTH OF 44".

EXTERIOR ENVELOPE NOTES

- ALL EXTERIOR JOINTS IN THE BUILDING ENVELOPE THAT ARE SOURCES OF AIR LEAKS SHALL BE CAULKED, GASKETED, WEATHER-STRIPPED, OR OTHERWISE SEALED IN ACCORDANCE WITH SPECIFICATIONS.
- PROVIDE WEEP WICKS OR WEEP HOLES AT 24" O.C. MINIMUM AT STEEL LINTELS, THROUGH WALL FLASHING, BASE OF WALLS, AND AT ANY HORIZONTAL BARRIER IN THE WALL CAVITY.
- ALL EXTERIOR MASONRY WALLS SHALL BE REINFORCED AS REQUIRED BY DRAWINGS AND SPECIFICATIONS.
- PROVIDE MASONRY CONTROL JOINTS THROUGH ALL CONTINUOUS MASONRY WALLS AT INTERVALS RECOMMENDED BY THE NATIONAL CONCRETE MASONRY ASSOCIATION AND THE NATIONAL BRICK INSTITUTE. SEE SPECIFICATIONS.
- SEE STRUCTURAL DRAWINGS FOR ADDITIONAL TYPICAL MASONRY NOTES.

INTERIOR PARTITION NOTES

- ALL METAL STUD GAGE DESIGN SHALL BE AS REQUIRED BY PERFORMANCE AND AS INDICATED IN THE SPECIFICATIONS.
- ALL METAL STUDS TO BE SPACED 16" O.C., TYPICAL UNLESS OTHERWISE NOTED.
- PROVIDE CONTINUOUS SHEET METAL BLOCKING IN ALL STUD WALLS THAT ARE TO RECEIVE GRAB BARS, HANGERS, TOILET PARTITIONS, CABINETS, SIGNAGE, ETC. COORDINATE MISCELLANEOUS BLOCKING IN WALL WITH APPROPRIATE EQUIPMENT SUPPLIERS. VERIFY EQUIPMENT ANCHORING REQUIREMENTS.
- PROVIDE J-MOLDS AND CORNER BEADS AT THE EDGES OF ALL GYPSUM BOARD.
- REFER TO WALL TYPES IN DRAWINGS FOR SOUND RATED AND FIRE RATED WALLS.
- ALL RATED PARTITIONS SHALL EXTEND TO THE UNDERSIDE OF THE ROOF DECK OR RATED FLOOR SLAB ABOVE. THE PERIMETER OF THE WALL AND ALL PENETRATIONS SHALL BE FIRE SEALED AS SPECIFIED.

DOOR NOTES

- HINGE SIDE OF DOOR FRAME TO BE OFFSET 4" MINIMUM FROM FACE OF STUD OF ADJACENT WALLS UNLESS NOTED DIFFERENTLY ON DRAWINGS. FIELD VERIFY COMPLIANCE WITH ADAAG CLEARANCES WHERE REQUIRED.
- AT MASONRY CONSTRUCTION, DOOR FRAME TO BE LOCATED AS INDICATED ON DRAWINGS.

SITE NOTES

- THE LOCATION OF THE PROPOSED UTILITIES AND STRUCTURES SHOWN HEREON ARE APPROXIMATE. IT SHALL BE THE RESPONSIBILITY OF THE DESIGN-BUILDER TO VERIFY THE EXISTENCE AND ACTUAL LOCATION OF SUCH. WHETHER SHOWN HEREON OR NOT, PRIOR TO ANY EXCAVATION, ANY DAMAGES SHALL BE REPAIRED AT THE EXPENSE OF THE DESIGN-BUILDER.

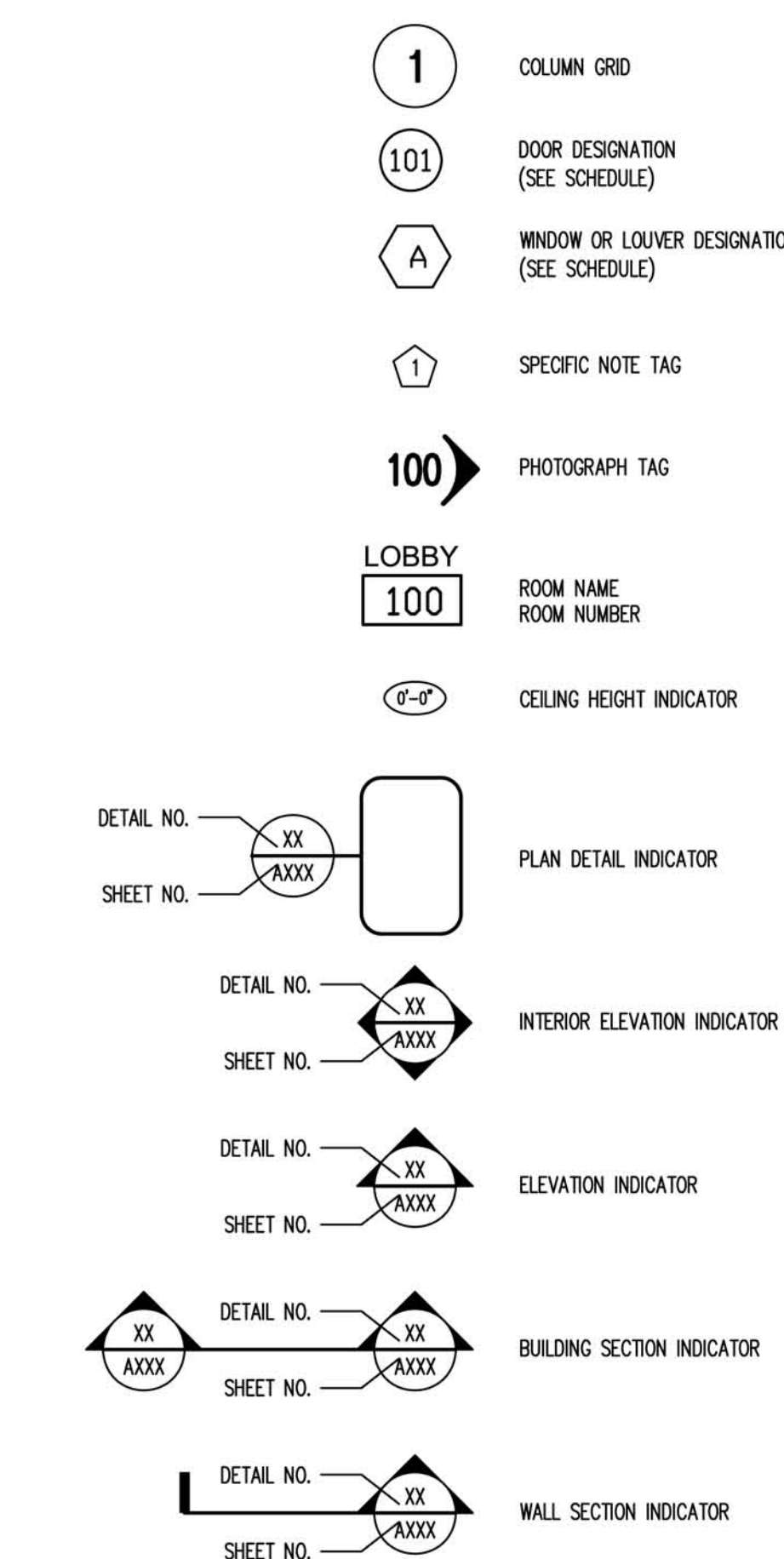
SIDEWALKS

- EXPANSION JOINTS SHALL BE CONSTRUCTED OF 1/2" THICK PRE-MOLDED EXPANSION MATERIAL WITH ALL CORNERS TO BE FORMED BY EXPANSION JOINTS.
- ANY SIDEWALK OR ACCESSIBLE ROUTE THAT IS NOT A LEVEL ELEVATION AT ITS INTERSECTION WITH A DRIVEWAY OR STREET WILL BE REQUIRED TO INSTALL A CURB RAMP PER ADAAG REQUIREMENTS. CURB RAMP TO BE INTEGRALLY COLORED TO CONTRAST WITH ADJACENT SIDEWALK AND STREET SURFACES.
- INTERSECTIONS BETWEEN ACCESSIBLE ROUTES AND DRIVEWAYS SHALL BE FITTED WITH PREMANUFACTURED DETECTABLE WARNING SURFACES COMPLYING WITH ADAAG SECTION 4.29.2 FORMING AN INTEGRAL PART OF THE SIDEWALK SURFACE.
- SIDEWALK SHALL BE SLOPED 1" TOWARDS THE STREET.

PARKING LOT

- PARKING STALLS SHALL BE STRIPED WITH A 4" CONTRASTING STRIPE (YELLOW ON CONCRETE AND YELLOW OR WHITE ON ASPHALT PARKING LOT).
- HANDICAP PARKING SPACES SHALL BE DESIGNATED BY BLUE STRIPING AND EITHER A BLUE SYMBOL ON A WHITE BACKGROUND OR A WHITE SYMBOL ON A BLUE BACKGROUND. ALL HANDICAP PARKING STALLS REQUIRE THE INSTALLATION OF SIGNAGE COMPLYING WITH ADAAG.
- ALL WHEEL STOPS AND CONCRETE CURBS SHALL BE CONSTRUCTED IN ACCORDANCE WITH THE CIVIL DRAWINGS.
- HANDICAP PARKING AND ACCESS ISLES SHALL BE LEVEL WITH SURFACE SLOPES NOT EXCEEDING 1:50 IN ALL DIRECTIONS.

SYMBOL LEGEND

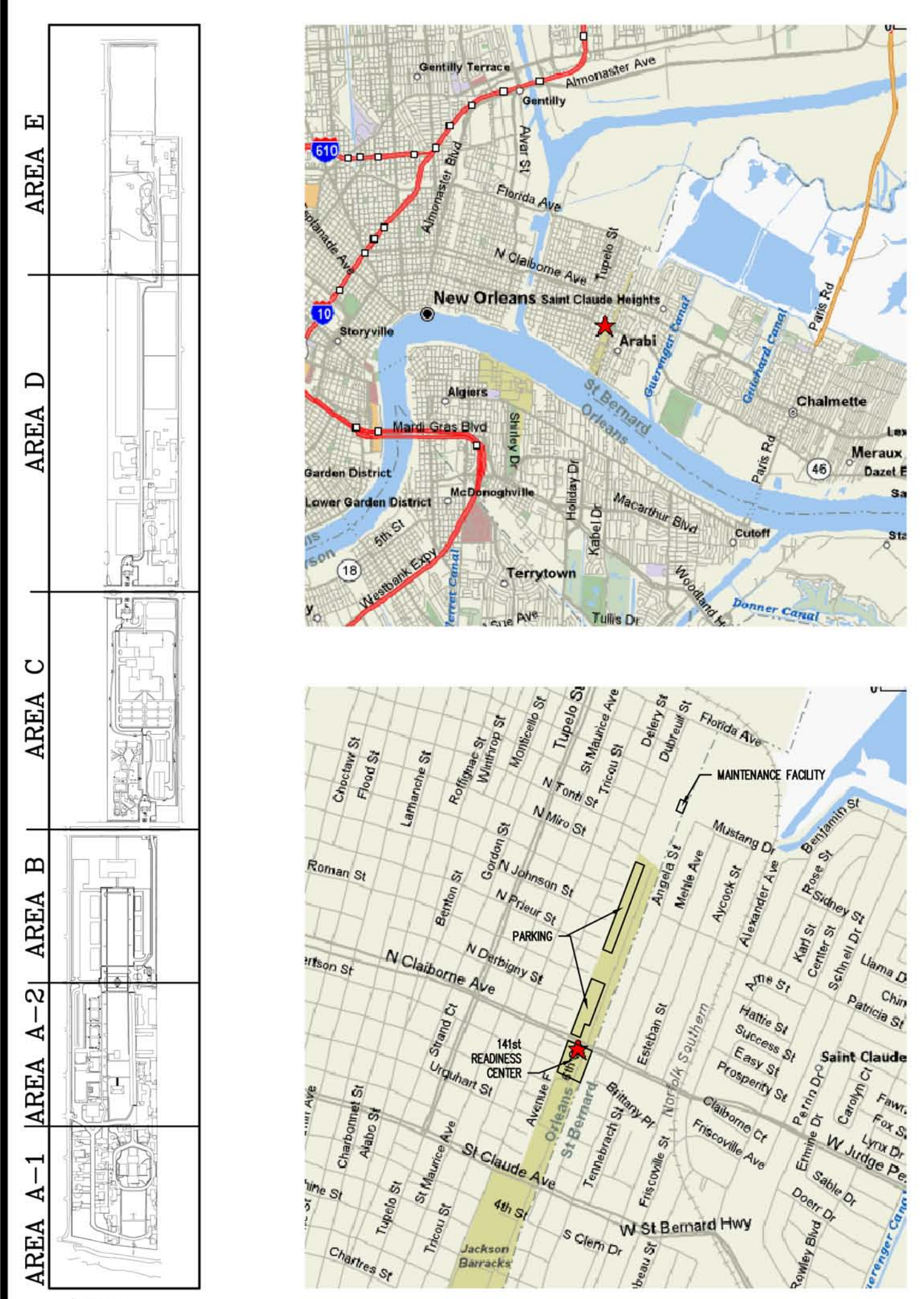


BROADMOOR
DESIGN GROUP
PROFESSIONAL ARCHITECTURAL CORPORATION
METAIRIE, LOUISIANA 70002
2740 NORTH ARBOULET ROAD
(504) 885-5401

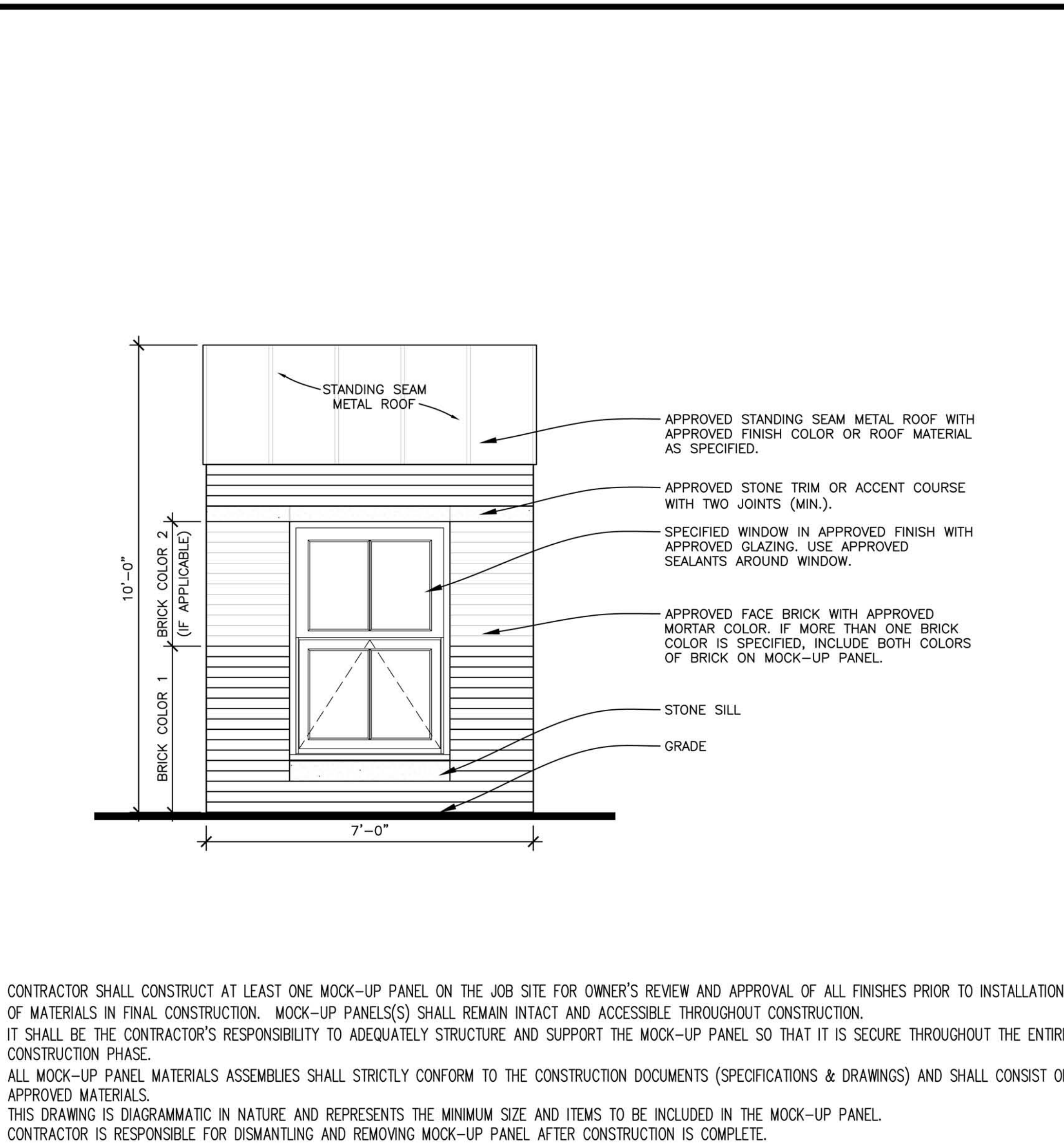
BlitchKnevel
ARCHITECTS
NEW ORLEANS, LOUISIANA 70130
757 ST. CHARLES AVENUE
(504) 524-4634
NEW ORLEANS, LOUISIANA 70130
701 P. O. BOX 524
(504) 524-5128

LOUISIANA ARMY NATIONAL GUARD
141st FIELD ARTILLERY BATTALION
READINESS CENTER
JACKSON BARRACKS NEW ORLEANS, LOUISIANA

VICINITY MAPS



MOCK-UP PANEL



- CONTRACTOR SHALL CONSTRUCT AT LEAST ONE MOCK-UP PANEL ON THE JOB SITE FOR OWNER'S REVIEW AND APPROVAL OF ALL FINISHES PRIOR TO INSTALLATION OF MATERIALS IN FINAL CONSTRUCTION. MOCK-UP PANEL(S) SHALL REMAIN INTACT AND ACCESSIBLE THROUGHOUT CONSTRUCTION.
- IT SHALL BE THE CONTRACTOR'S RESPONSIBILITY TO ADEQUATELY STRUCTURE AND SUPPORT THE MOCK-UP PANEL SO THAT IT IS SECURE THROUGHOUT THE ENTIRE CONSTRUCTION PHASE.
- ALL MOCK-UP PANEL MATERIALS ASSEMBLIES SHALL STRICTLY CONFORM TO THE CONSTRUCTION DOCUMENTS (SPECIFICATIONS & DRAWINGS) AND SHALL CONSIST OF APPROVED MATERIALS.
- THIS DRAWING IS DIAGRAMMATIC IN NATURE AND REPRESENTS THE MINIMUM SIZE AND ITEMS TO BE INCLUDED IN THE MOCK-UP PANEL.
- CONTRACTOR IS RESPONSIBLE FOR DISMANTLING AND REMOVING MOCK-UP PANEL AFTER CONSTRUCTION IS COMPLETE.

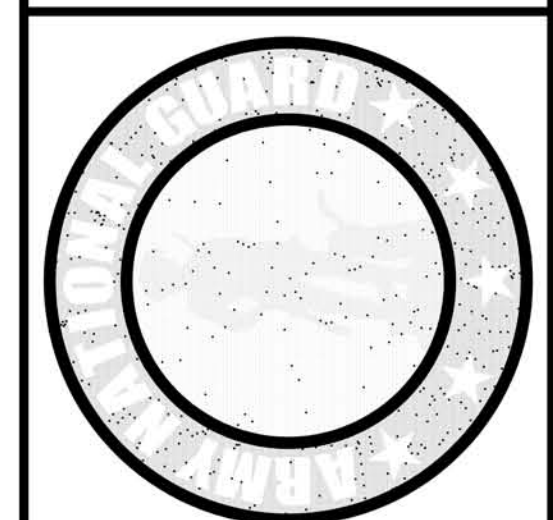
1 SAMPLE MOCK-UP PANEL ELEV.
1/2" = 1'-0"

DRAWING INDEX

PAGE NO.	DRAWING NO.	SHEET TITLE
GENERAL		
1 of 106	G000	TITLE SHEET
2 of 106	G001	DRAWING INDEX & GENERAL PROJECT INFORMATION
CIVIL		
3 of 106	G101	FIRST FLOOR LIFE SAFETY PLAN
4 of 106	G102	SECOND FLOOR LIFE SAFETY PLAN
5 of 106	G103	THIRD FLOOR LIFE SAFETY PLAN
6 of 106	G104	FOURTH FLOOR LIFE SAFETY PLAN
LANDSCAPE		
12 of 106	L101	LANDSCAPE PLAN (ALTERNATE 2D)
STRUCTURAL		
13 of 106	S001	GENERAL NOTES, SCHEDULES AND DETAILS
14 of 106	S002	BUILDING LIVE LOADS
15 of 106	S101	FOUNDATION AND FIRST FLOOR FRAMING PLAN
16 of 106	S102	SECOND FLOOR FRAMING PLAN
17 of 106	S103	THIRD FLOOR FRAMING PLAN AND PART ATTIC FR. PLAN
18 of 106	S104	FOURTH FLOOR FRAMING PLAN AND LOW ROOF FR. PLAN
19 of 106	S105	ATTIC FLOOR FRAMING PLAN AT EL. 160'-0"
20 of 106	S106	HIGH ROOF FRAMING PLAN
21 of 106	S107	CENTRAL PLANT AND TRANSFORMER PAD FRAMING PLANS
22 of 106	S201	SECTIONS & DETAILS
23 of 106	S301	SECTIONS & DETAILS
24 of 106	S401	ROOF SECTIONS AND DETAILS
25 of 106	S501	TRUSS DETAILS
26 of 106	S601	COLUMN SCHEDULES
ARCHITECTURAL		
27 of 106	AS101	SITE PLAN - DEMOLITION - AREA C
28 of 106	AS102	SITE PLAN - NEW CONSTRUCTION - AREA C
29 of 106	AS103	SITE PLANS - DEMOLITION & NEW CONSTRUCTION - AREA D
30 of 106	AS201	SITE DEMOLITION PHOTOGRAPHS
31 of 106	A101	FIRST FLOOR PLAN
32 of 106	A102	SECOND FLOOR PLAN
33 of 106	A103	THIRD FLOOR PLAN
34 of 106	A104	FOURTH FLOOR PLAN

PAGE NO.	DRAWING NO.	SHEET TITLE
35 of 106	A111	FIRST FLOOR REFLECTED CEILING PLAN
36 of 106	A112	SECOND FLOOR REFLECTED CEILING PLAN
37 of 106	A113	THIRD FLOOR REFLECTED CEILING PLAN
38 of 106	A114	FOURTH FLOOR REFLECTED CEILING PLAN
39 of 106	A121	ROOF PLAN
40 of 106	A131	CENTRAL PLANT PLANS
41 of 106	A161	OMS #12 FLOOR PLAN (ALTERNATE 3)
42 of 106	A181	OMS #12 ROOF PLAN (ALTERNATE 3)
43 of 106	A201	EXTERIOR ELEVATIONS
44 of 106	A202	EXTERIOR ELEVATIONS
45 of 106	A211	CENTRAL PLANT EXTERIOR ELEVATIONS
46 of 106	A221	OMS #12 PHOTOGRAPHS - FLOOD DAMAGE (ALTERNATE 3)
47 of 106	A222	OMS #12 PHOTOGRAPHS - FLOOD DAMAGE (ALTERNATE 3)
48 of 106	A301	BUILDING SECTIONS
49 of 106	A311	WALL SECTIONS
50 of 106	A321	CENTRAL PLANT BUILDING & WALL SECTIONS
51 of 106	A601	DOOR SCHEDULE
52 of 106	A602	DOOR AND WINDOW SCHEDULE
53 of 106	A603	FINISH SCHEDULE
FIRE PROTECTION		
54 of 106	FP101	FIRST FLOOR FIRE PROTECTION PLAN
55 of 106	FP102	SECOND FLOOR FIRE PROTECTION PLAN
56 of 106	FP103	THIRD FLOOR FIRE PROTECTION PLAN
57 of 106	FP104	FOURTH FLOOR FIRE PROTECTION PLAN
PLUMBING		
58 of 106	P101	FIRST FLOOR PLAN - PLUMBING
59 of 106	P102	SECOND FLOOR PLAN - PLUMBING
60 of 106	P103	THIRD FLOOR PLAN - PLUMBING
61 of 106	P104	FOURTH FLOOR PLAN - PLUMBING
62 of 106	P121	CENTRAL PLANT PLANS - FLOORS 1 & 2 - PLUMBING
63 of 106	P131	OMS #12 PLAN - PLUMBING (ALTERNATE 3)
64 of 106	P601	PLUMBING SCHEDULE AND DETAILS
MECHANICAL		
65 of 106	M101	SITE PLAN - MECHANICAL
66 of 106	M111	FIRST FLOOR PLAN - HVAC
67 of 106	M112	SECOND FLOOR PLAN - HVAC
68 of 106	M113	THIRD FLOOR PLAN - HVAC
69 of 106	M114	FOURTH FLOOR PLAN - HVAC

PAGE NO.	DRAWING NO.	SHEET TITLE
70 of 106	M121	CENTRAL PLANT PLANS - FLOORS 1 & 2 - HVAC
71 of 106	M131	OMS #12 PLAN - MECHANICAL SYSTEMS (ALTERNATE 3)
72 of 106	M401	LARGE SCALE MECHANICAL ROOMS
73 of 106	M601	MECHANICAL SCHEDULES
74 of 106	M602	MECHANICAL DETAILS
ELECTRICAL		
75 of 106	E001	ELECTRICAL LEGEND & NOTES
76 of 106	E101	ELECTRICAL SITE PLAN - AREA C - LIGHTING
77 of 106	E102	ELECTRICAL SITE PLAN - AREA D - POV PARKING LIGHTING
78 of 106	E103	ELECTRICAL SITE PLAN - AREA D - MV PARKING LIGHTING
79 of 106	E104	ELECTRICAL SITE PLAN - AREA C - POWER
80 of 106	E111	LIGHTING PLAN - FIRST FLOOR
81 of 106	E112	LIGHTING PLAN - SECOND FLOOR
82 of 106	E113	LIGHTING PLAN - THIRD FLOOR
83 of 106	E114	LIGHTING PLAN - FOURTH FLOOR
84 of 106	E121	POWER & COMMUNICATION PLAN - FIRST FLOOR
85 of 106	E122	POWER & COMMUNICATION PLAN - SECOND FLOOR
86 of 106	E123	POWER & COMMUNICATION PLAN - THIRD FLOOR
87 of 106	E124	POWER & COMMUNICATION PLAN - FOURTH FLOOR
88 of 106	E131	MECHANICAL POWER PLAN - FIRST FLOOR
89 of 106	E132	MECHANICAL POWER PLAN - SECOND FLOOR
90 of 106	E133	MECHANICAL POWER PLAN - THIRD FLOOR
91 of 106	E134	MECHANICAL POWER PLAN - FOURTH FLOOR
92 of 106	E141	SPECIAL SYSTEMS PLAN - FIRST FLOOR
93 of 106	E142	SPECIAL SYSTEMS PLAN - SECOND FLOOR
94 of 106	E143	SPECIAL SYSTEMS PLAN - THIRD FLOOR
95 of 106	E144	SPECIAL SYSTEMS PLAN - FOURTH FLOOR
96 of 106	E151	LIGHTING PLAN - FLOORS 1 & 2 - CENTRAL PLANT
97 of 106	E152	POWER & COMM. PLAN - FLOORS 1 & 2 - CENTRAL PLANT
98 of 106	E161	OMS #12 PLAN - ELECTRICAL SYSTEMS (ALTERNATE 3)
99 of 106	E401	ENLARGED ELECTRICAL PLAN
100 of 106	E501	ELECTRICAL DETAILS
101 of 106	E601	ELECTRICAL FIXTURE SCHEDULES
102 of 106	E602	ELECTRICAL PANELBOARD SCHEDULES
103 of 106	E611	ELECTRICAL RISER DIAGRAMS
104 of 106	E612	ELECTRICAL RISER DIAGRAMS
105 of 106	E613	ELECTRICAL RISER DIAGRAMS - CENTRAL PLANT
INFORMATIONAL SHEETS		
106 of 106	INFO-101	INSTALLATION DESIGN DWGS - ELEC. SECURITY SYSTEM
END OF DRAWING INDEX		



MARK	DATE	DESCRIPTION
△	2/22/06	PROG. REVIEW #1
△	3/10/06	PROG. REVIEW #2
△	3/27/06	PROG. REVIEW #3
△	4/10/06	PROG. REVIEW #4
△	5/3/06	PRELIM. DESIGN

MARK DATE DESCRIPTION
DRAWING ISSUED: 05/03/2006

NOB PROJECT NO.: 220027

PRELIMINARY DESIGN
DRAWING TITLE:
DRAWING INDEX & GENERAL PROJECT INFORMATION

DRAWING NUMBER:

G001
SHEET 2 OF 106