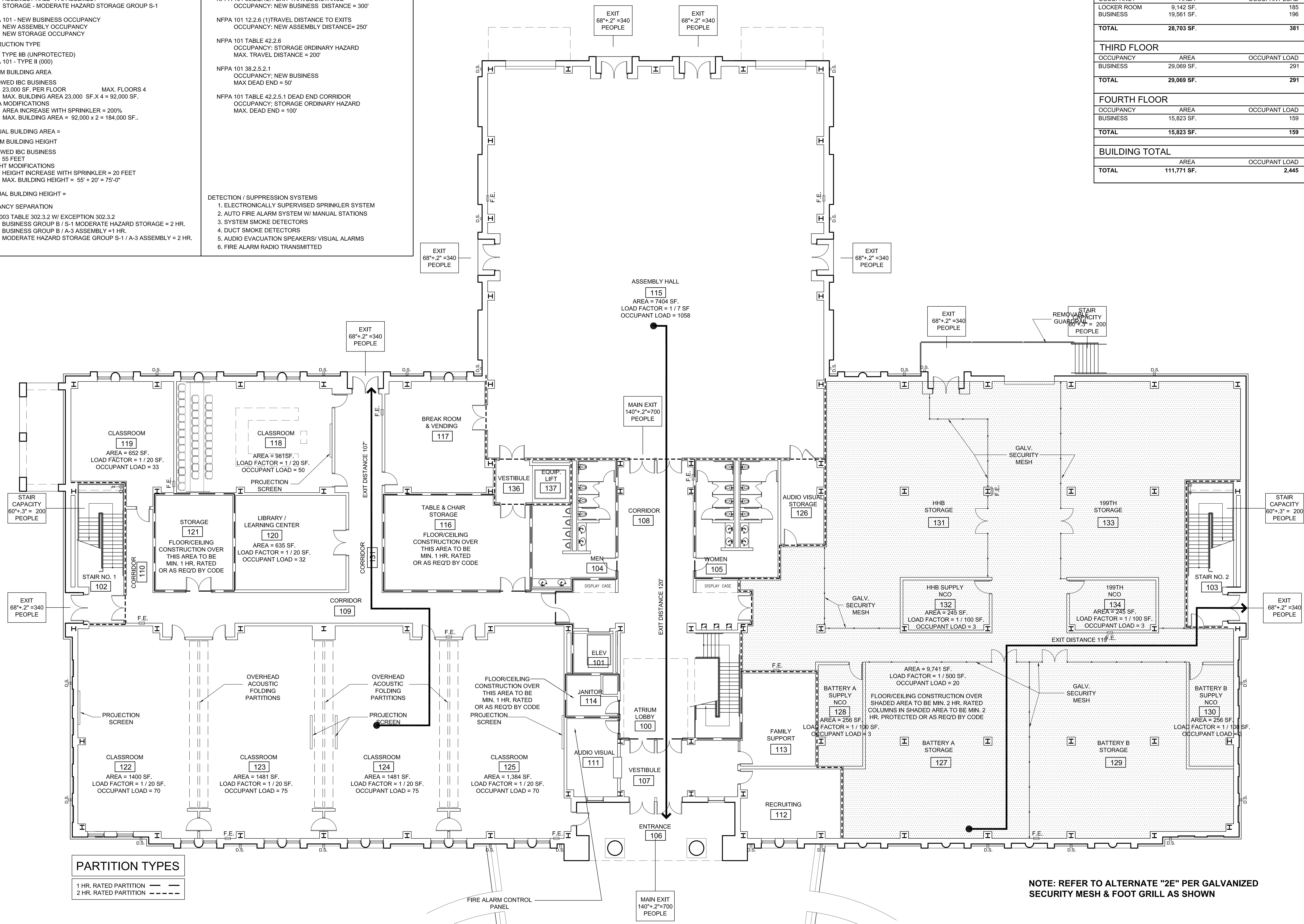


CODE DATA

<p>APPLICABLE CODES</p> <p>INTERNATIONAL BUILDING CODE 2003 NFPA 101 LIFE SAFETY CODE 2003 ADA ACCESSIBILITY GUIDELINES UFCS-600-01</p> <p>BUILDING TO BE PROVIDED WITH AUTOMATIC SPRINKLER SYSTEM THROUGHOUT</p> <p>OCCUPANCY CLASSIFICATION</p> <p>IBC - BUSINESS GROUP B ASSEMBLY HALL - A-3 ASSEMBLY STORAGE - MODERATE HAZARD STORAGE GROUP S-1</p> <p>NFPA 101 - NEW BUSINESS OCCUPANCY NEW ASSEMBLY OCCUPANCY NEW STORAGE OCCUPANCY</p> <p>CONSTRUCTION TYPE</p> <p>IBC - TYPE IIB (UNPROTECTED) NFPA 101 - TYPE II (000)</p> <p>MAXIMUM BUILDING AREA</p> <p>ALLOWED IBC BUSINESS 23,000 SF. PER FLOOR MAX. FLOORS 4 MAX. BUILDING AREA 23,000 SF. X 4 = 92,000 SF.</p> <p>AREA MODIFICATIONS AREA INCREASE WITH SPRINKLER = 200% MAX. BUILDING AREA = 92,000 X 2 = 184,000 SF.</p> <p>ACTUAL BUILDING AREA =</p> <p>MAXIMUM BUILDING HEIGHT</p> <p>ALLOWED IBC BUSINESS 55 FEET</p> <p>HEIGHT MODIFICATIONS HEIGHT INCREASE WITH SPRINKLER = 20 FEET MAX. BUILDING HEIGHT = 55' + 20' = 75'-0"</p> <p>ACTUAL BUILDING HEIGHT =</p> <p>OCCUPANCY SEPARATION</p> <p>IBC 2003 TABLE 302.3.2 W/ EXCEPTION 302.3.2 BUSINESS GROUP B / S-1 MODERATE HAZARD STORAGE = 2 HR. BUSINESS GROUP B / A-3 ASSEMBLY = 1 HR. MODERATE HAZARD STORAGE GROUP S-1 / A-3 ASSEMBLY = 2 HR.</p>	<p>EXTERIOR WALLS & OPENINGS</p> <p>IBC 2003 TABLE 602 DISTANCE FROM PROPERTY LINE > 30' = UNRATED EXTERIOR WALLS</p> <p>IBC 2003 TABLE 704.8 DISTANCE FROM PROPERTY LINE > 30' = NO LIMIT ON UNPROTECTED OPENINGS</p> <p>TRAVEL DISTANCE AND DEAD END CORRIDORS</p> <p>NFPA 101 38.2.2.12.1 EXIT TRAVEL DISTANCE OCCUPANCY: NEW BUSINESS DISTANCE = 300'</p> <p>NFPA 101 12.2.6 (1) TRAVEL DISTANCE TO EXITS OCCUPANCY: NEW ASSEMBLY DISTANCE = 250'</p> <p>NFPA 101 TABLE 42.2.6 OCCUPANCY: STORAGE ORDINARY HAZARD MAX. TRAVEL DISTANCE = 200'</p> <p>NFPA 101 38.2.5.2.1 OCCUPANCY: NEW BUSINESS MAX DEAD END = 50'</p> <p>NFPA 101 TABLE 42.2.5.1 DEAD END CORRIDOR OCCUPANCY: STORAGE ORDINARY HAZARD MAX. DEAD END = 100'</p> <p>DETECTION / SUPPRESSION SYSTEMS</p> <ol style="list-style-type: none"> ELECTRONICALLY SUPERVISED SPRINKLER SYSTEM AUTO FIRE ALARM SYSTEM W/ MANUAL STATIONS SYSTEM SMOKE DETECTORS DUCT SMOKE DETECTORS AUDIO EVACUATION SPEAKERS/ VISUAL ALARMS FIRE ALARM RADIO TRANSMITTED
---	--

AREA / OCCUPANT TABULATIONS

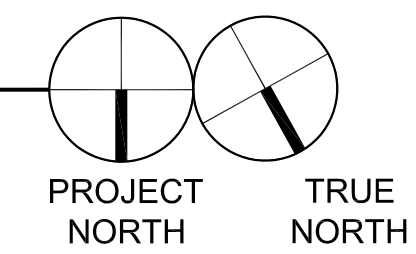
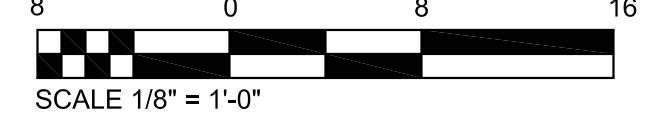
FIRST FLOOR		
OCCUPANCY	AREA	OCCUPANT LOAD
ASSEMBLY	7,404 SF.	1,058
CLASSROOM	8,014 SF.	405
STORAGE	9,741 SF.	20
BUSINESS	13,017 SF.	131
TOTAL	38,176 SF.	1,614
SECOND FLOOR		
OCCUPANCY	AREA	OCCUPANT LOAD
LOCKER ROOM	9,142 SF.	185
BUSINESS	19,561 SF.	196
TOTAL	28,703 SF.	381
THIRD FLOOR		
OCCUPANCY	AREA	OCCUPANT LOAD
BUSINESS	29,069 SF.	291
TOTAL	29,069 SF.	291
FOURTH FLOOR		
OCCUPANCY	AREA	OCCUPANT LOAD
BUSINESS	15,823 SF.	159
TOTAL	15,823 SF.	159
BUILDING TOTAL		
OCCUPANCY	AREA	OCCUPANT LOAD
TOTAL	111,771 SF.	2,445



PARTITION TYPES

1 HR. RATED PARTITION	---
2 HR. RATED PARTITION	---

1ST FLOOR LIFE SAFETY PLAN



NOTE: REFER TO ALTERNATE "2E" PER GALVANIZED SECURITY MESH & FOOT GRILL AS SHOWN

These drawings are conceptual in nature and are not suitable for construction. It is the intent of these documents to clearly delineate the baseline minimum scale, scope and quality of the project. It is the responsibility of the design-builder that his proposal provides for a complete and functional facility responding to relative Army National Guard criteria, recognized industry standards and applicable building codes regardless of the content of these conceptual drawings. Further, it will be the responsibility of the successful design-builder and his architect of record to prepare complete construction documents responding to the fullest intent of the conceptual drawings and specifications.

BROADMOOR DESIGN GROUP
A PROFESSIONAL ARCHITECTURAL CORPORATION
METairie, LOUISIANA 70002
2740 NORTH ARBORET ROAD
(504) 885-5401
FAX (504) 885-4005

BritchKnevel ARCHITECTS
NEW ORLEANS, LOUISIANA 70130
757 ST. CHARLES AVENUE
(504) 524-4634
FAX (504) 524-5128

**LOUISIANA ARMY NATIONAL GUARD
141st FIELD ARTILLERY BATTALION
READINESS CENTER**
JACKSON BARRACKS NEW ORLEANS, LOUISIANA



2/22/06	PROG. REVIEW #1
3/10/06	PROG. REVIEW #2
3/27/06	PROG. REVIEW #3
4/10/06	PROG. REVIEW #4
5/3/06	PRELIM. DESIGN

MARK	DATE	DESCRIPTION
	DRAWING ISSUED:	05/03/2006

NGB PROJECT NO.: 220027

PRELIMINARY DESIGN

DRAWING TITLE:
**FIRST FLOOR
LIFE SAFETY PLAN**

DRAWING NUMBER:

G101

SHEET 3 OF 106