

DETAILS SHOWN  
PER ALT. 2C

PAVEMENT MATERIAL	MINIMUM THICKNESS, INCHES	
	LIGHT DUTY	HEAVY DUTY
ASPHALTIC CONCRETE WEARING COURSE	3	5
RECYCLED CRUSHED CONCRETE	8	12
COMPACTED STRUCTURAL FILL	12	12

PAVEMENT MATERIAL	MINIMUM THICKNESS, INCHES	
	LIGHT DUTY	HEAVY DUTY
ASPHALTIC CONCRETE WEARING COURSE	6	8
RECYCLED CRUSHED CONCRETE	12	12

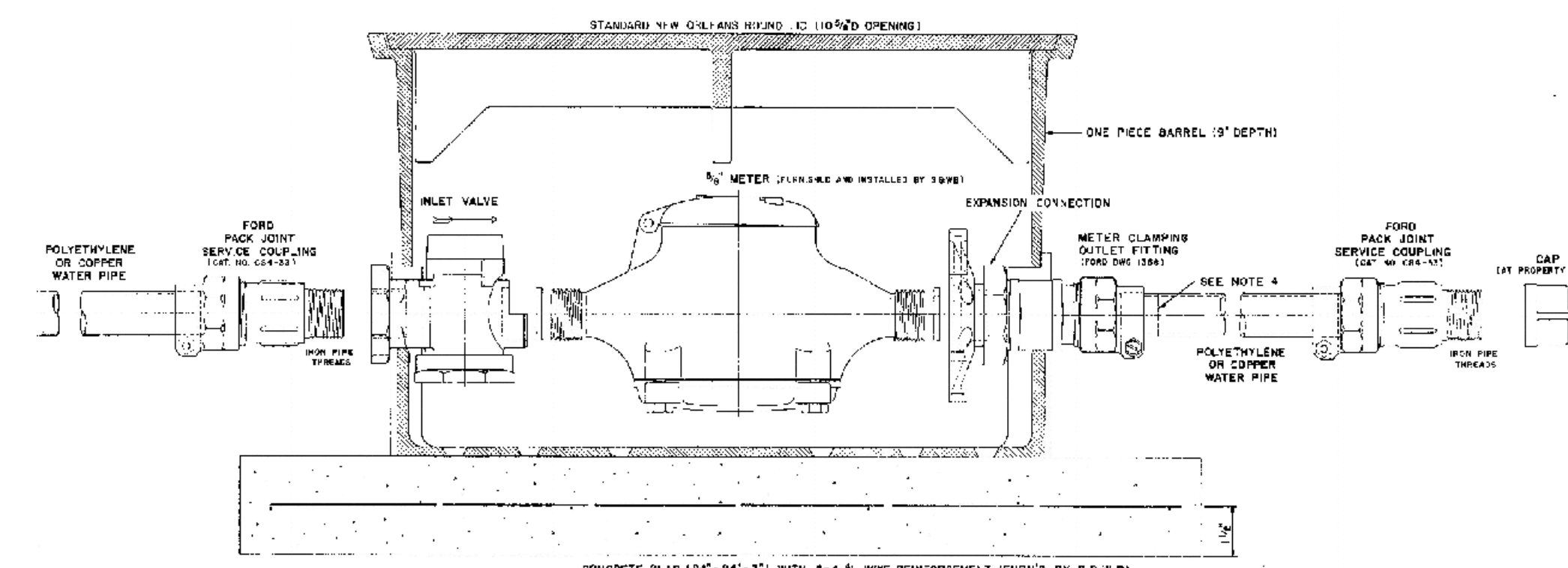
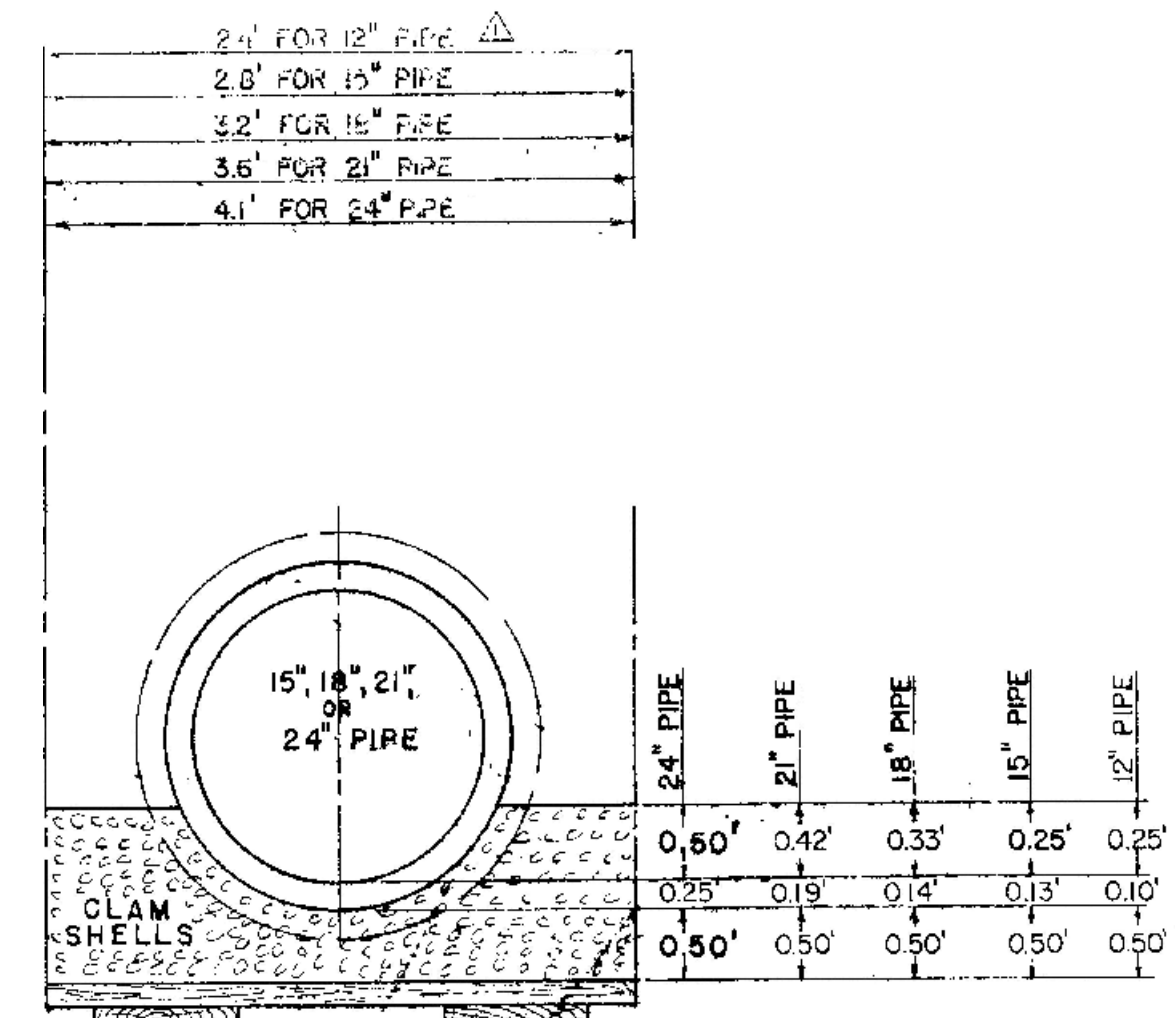
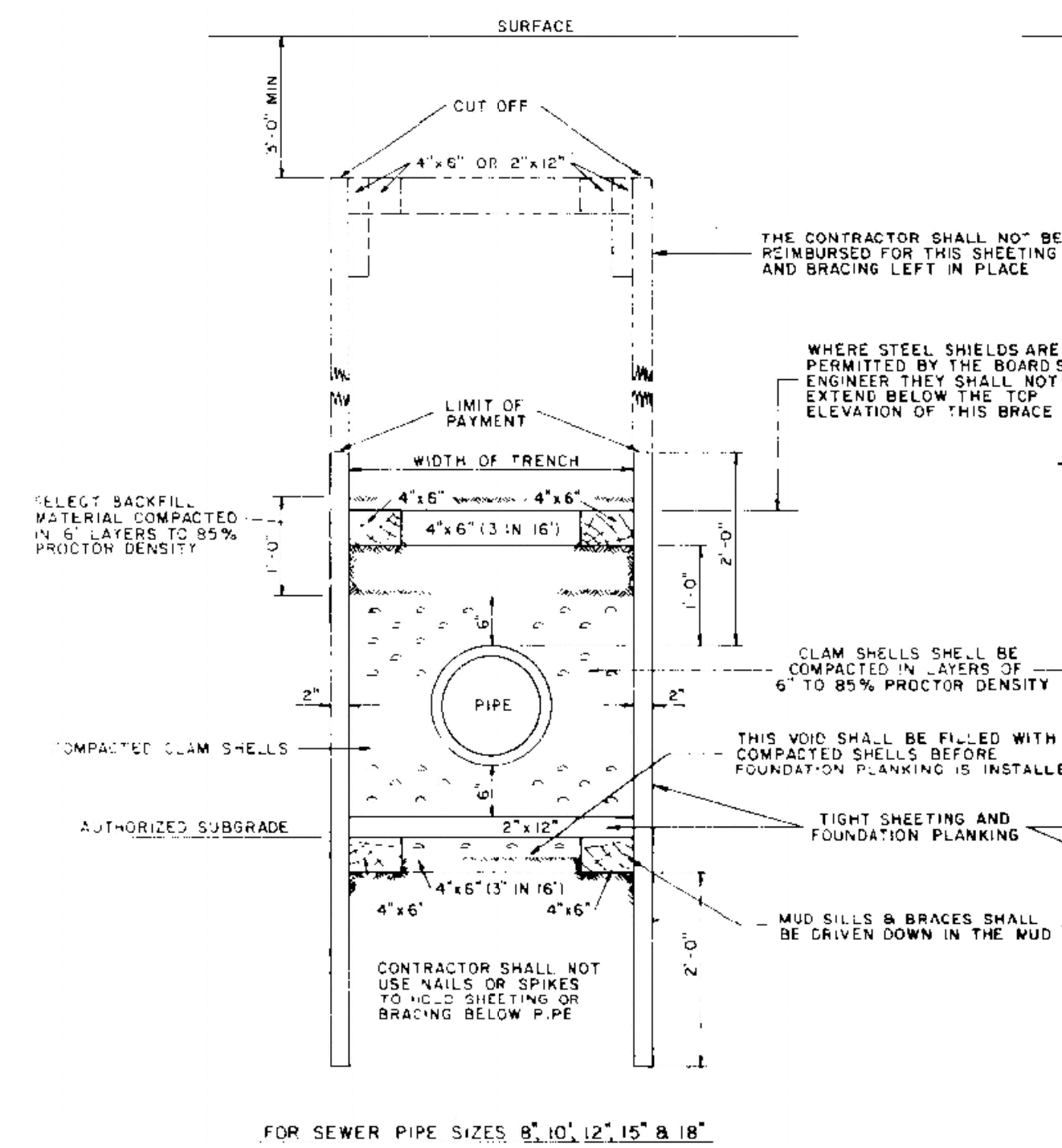
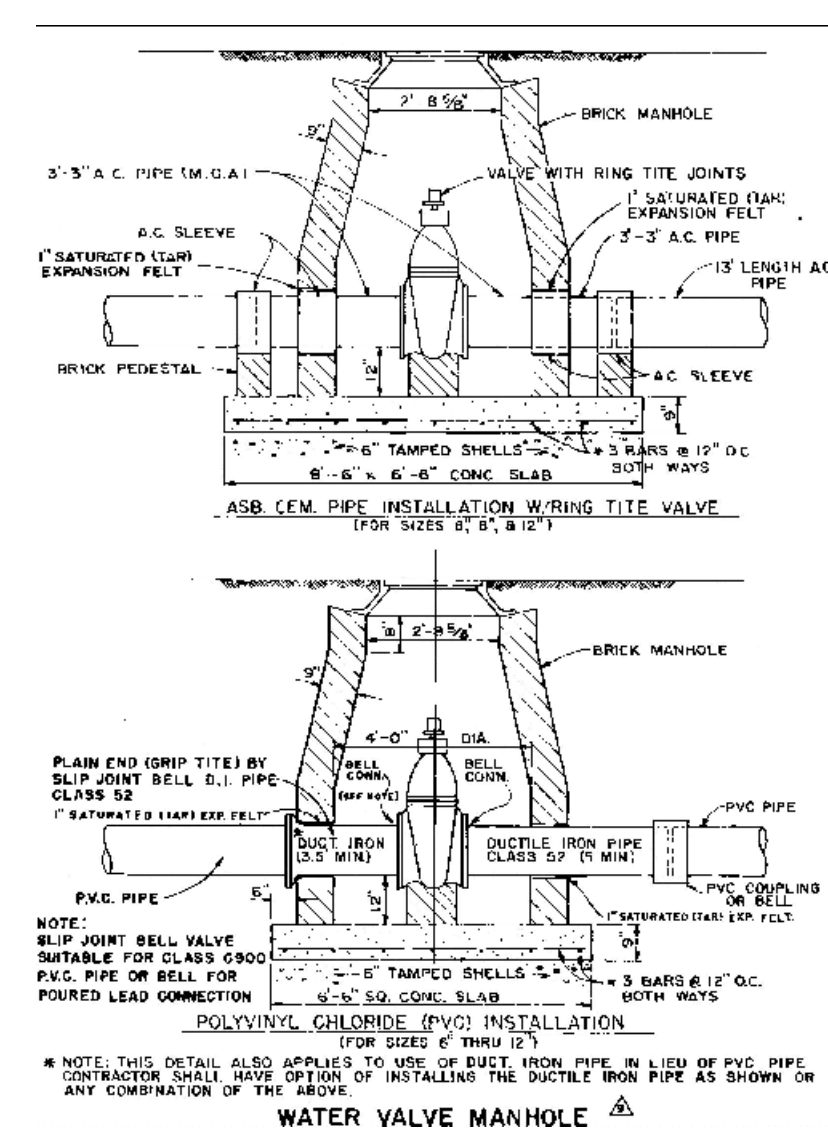
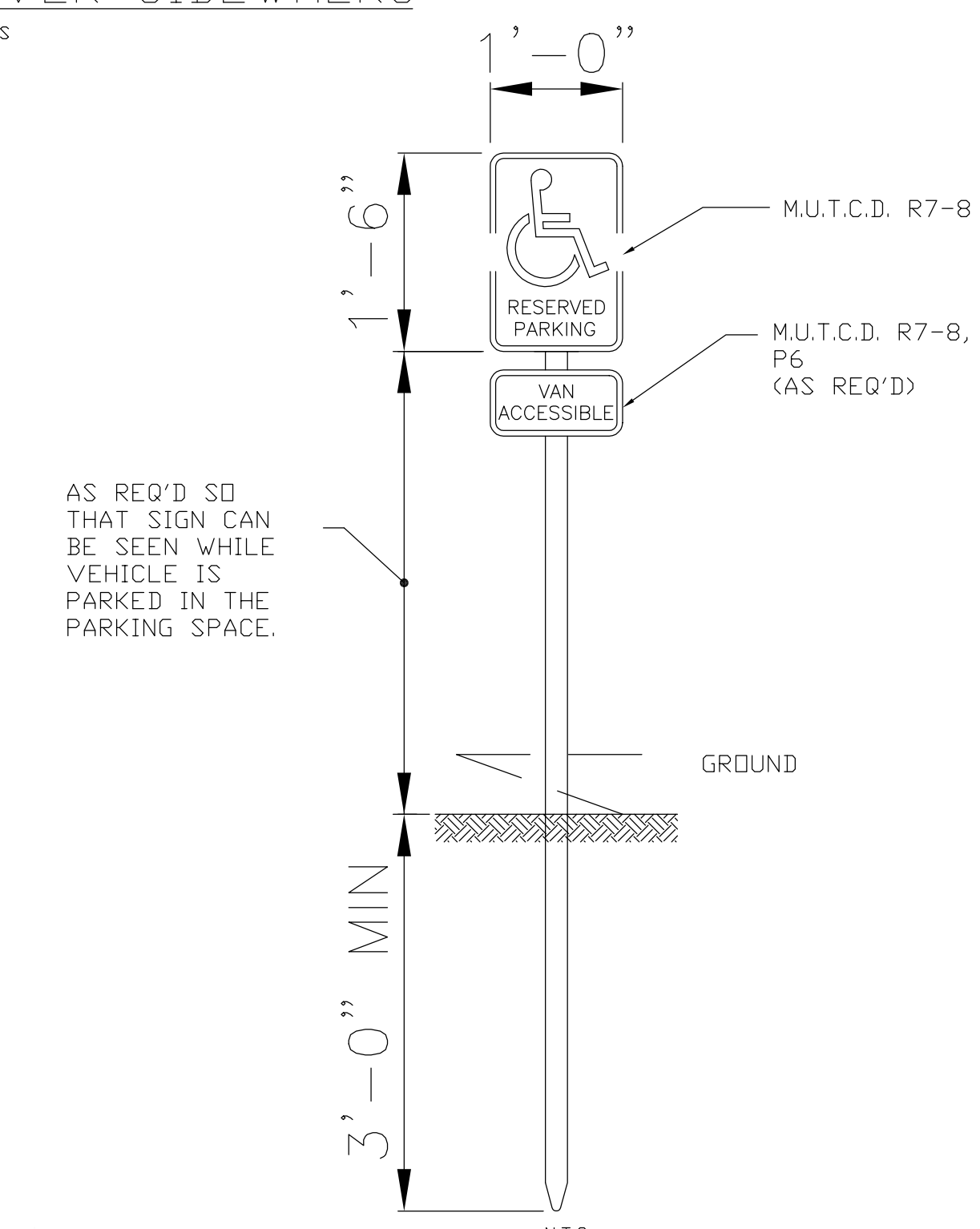
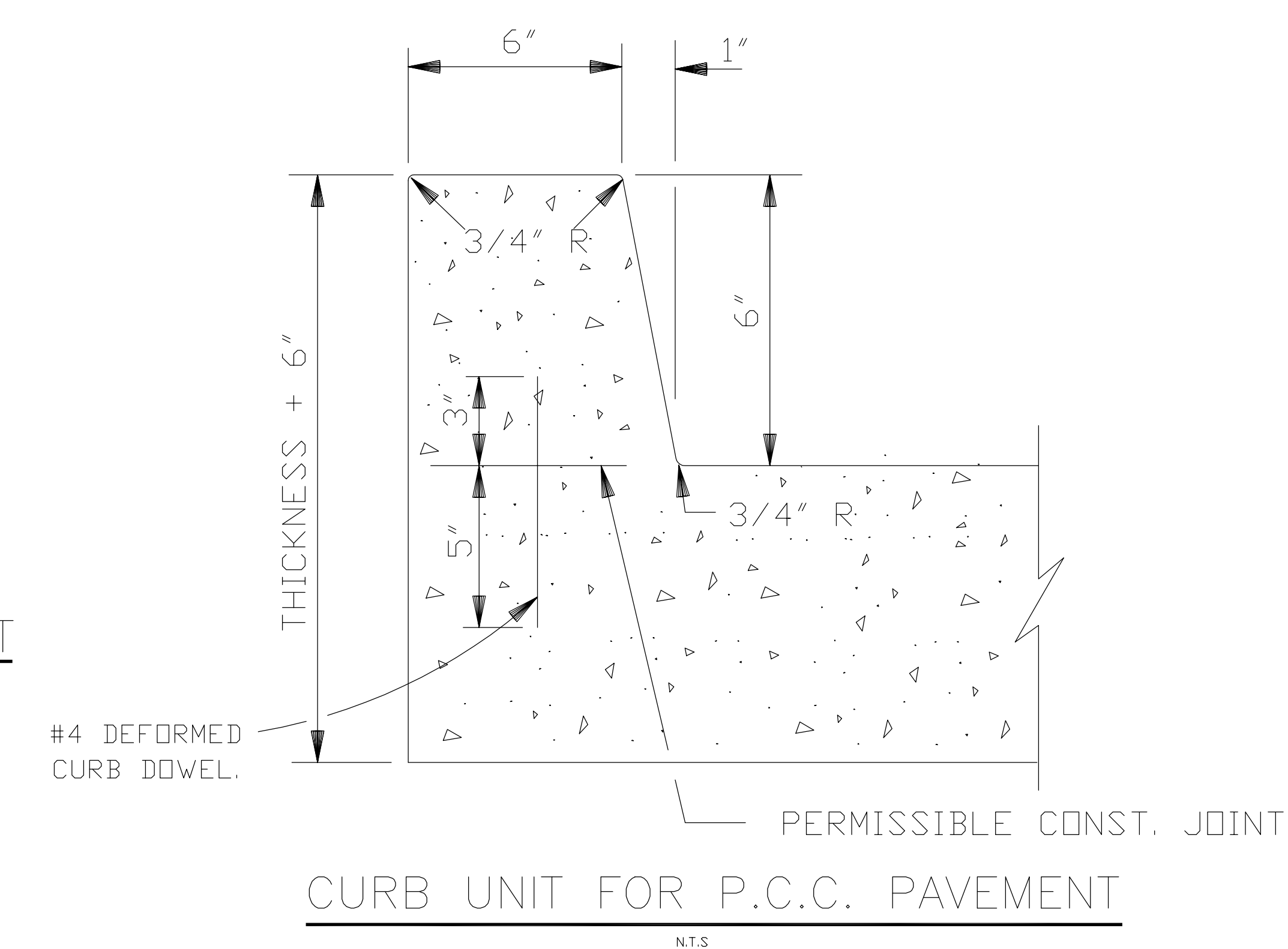
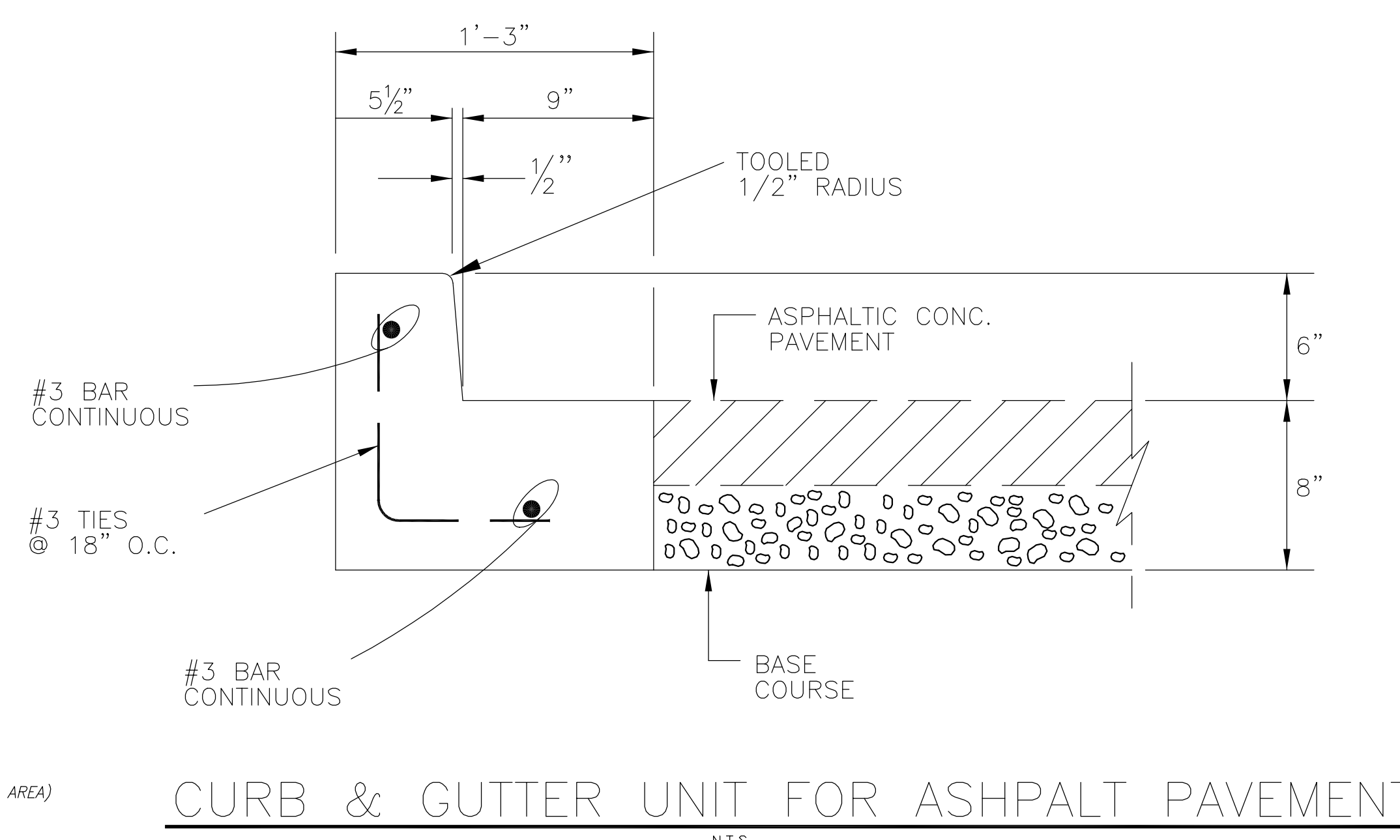
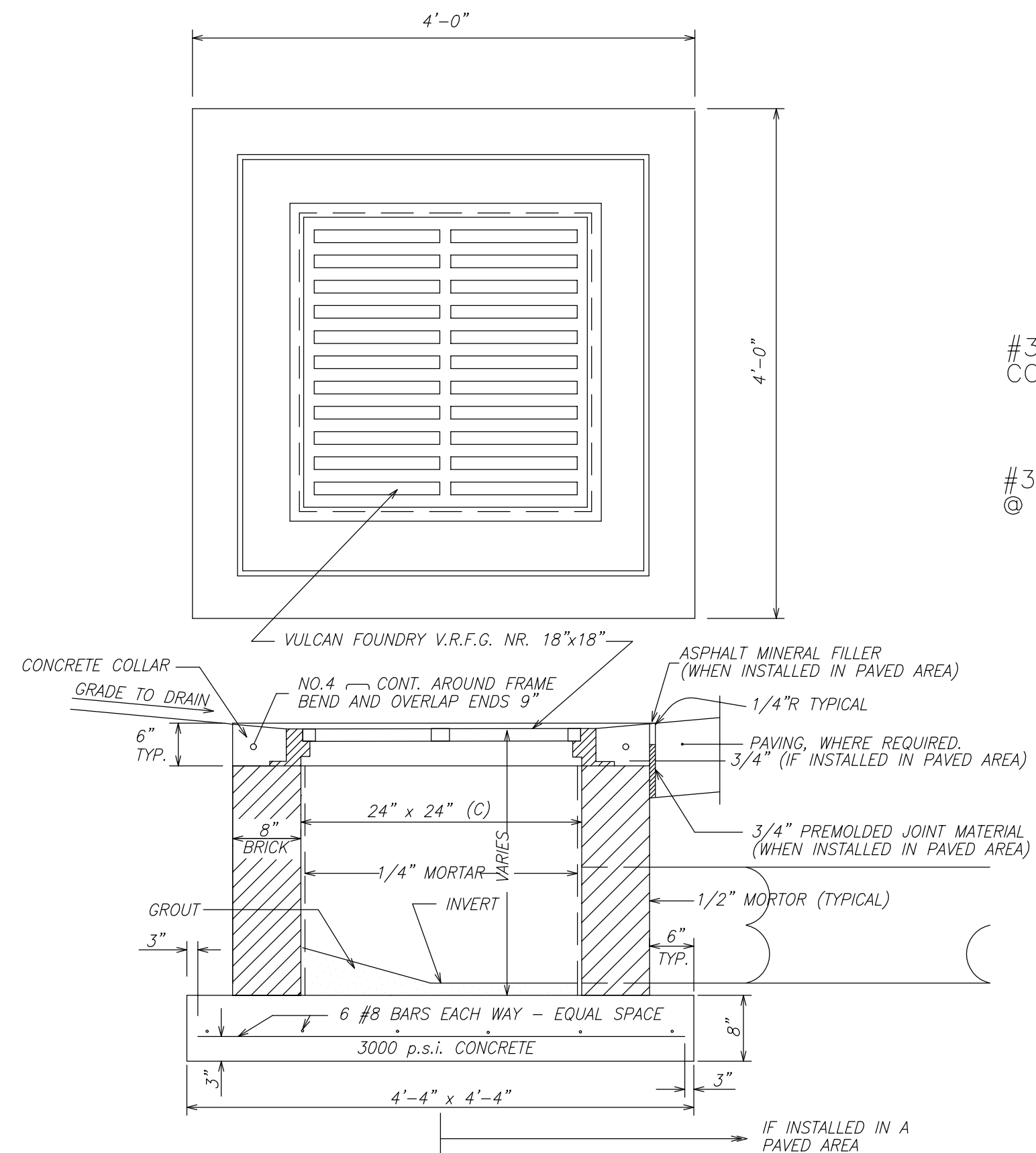
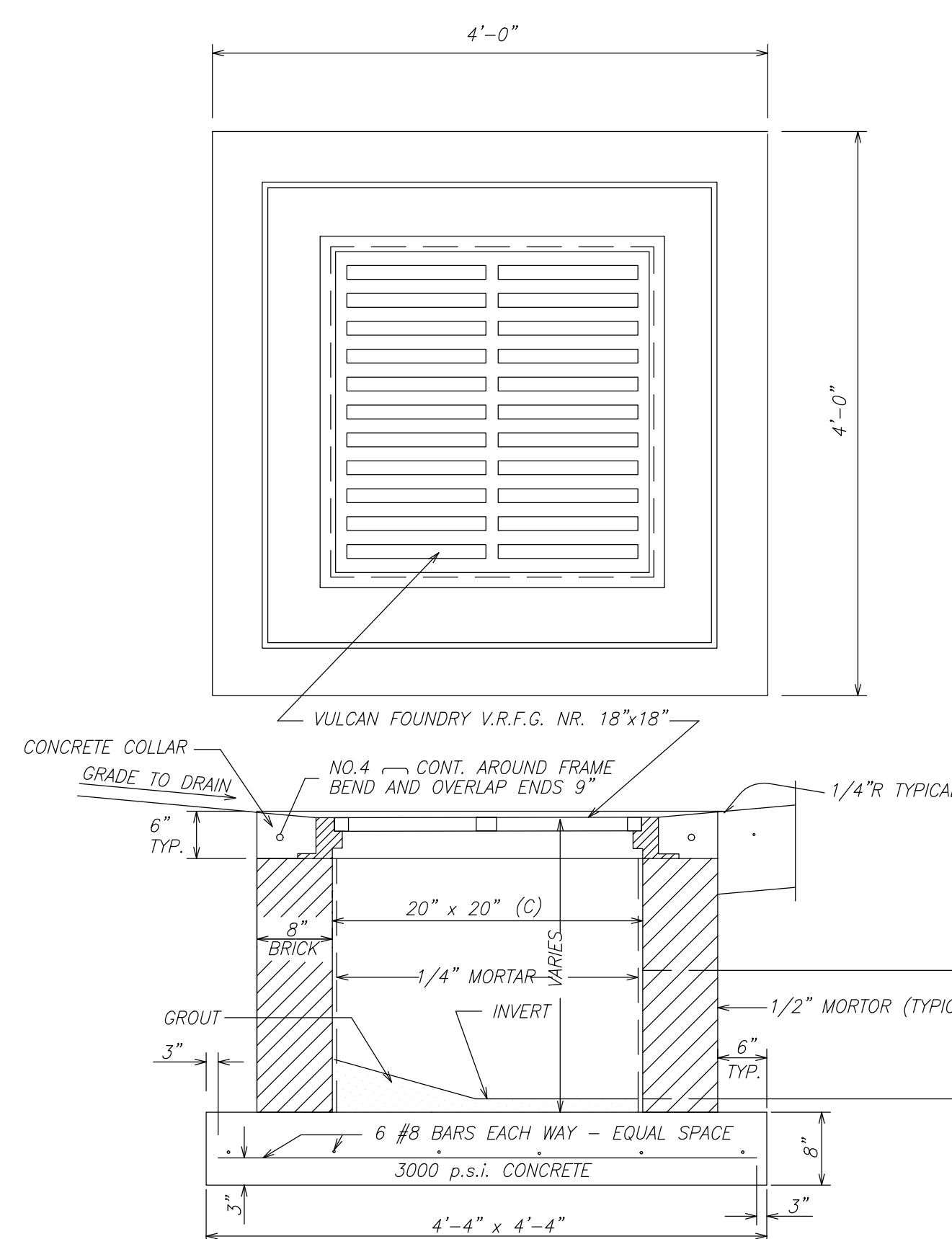


FIG. A  
PARKING SPACE REQUIREMENTS  
N.T.S.



NOTE:

PARKING SPACES FOR PHYSICALLY HANDICAPPED PEOPLE SHALL BE AT LEAST 8' WIDE AND SHALL HAVE AN ADJACENT ACCESS AISLE 5' WIDE MINIMUM (SEE FIG. A). PARKING ACCESS AISLE SHALL BE PART OF THE ACCESSIBLE ROUTE TO THE BUILDING OR FACILITY ENTRANCE. TWO ACCESSIBLE PARKING SPACES MAY SHARE A COMMON ACCESS AISLE. PARKED VEHICLE OVERHANGS SHALL NOT REDUCE THE CLEAR WIDTH OF AN ACCESSIBLE CIRCULATION ROUTE. ACCESSIBLE PARKING SPACES SHALL BE DESIGNATED AS RESERVED FOR PHYSICALLY HANDICAPPED PEOPLE BY A SIGN SHOWING THE SYMBOL OF ACCESSIBILITY. SUCH SIGNS SHALL NOT BE OBSCURED BY A VEHICLE PARKED IN THE SPACE.



These drawings are conceptual in nature and are not suitable for construction. It is the intent of these documents to clearly delineate the baseline minimum scope, scope and quality of the project. It is the responsibility of the design-builder that his proposal provides for a complete and functional facility responding to relative Army National Guard criteria, recognized industry standards and applicable building codes regardless of the content of these conceptual drawings. Further, it will be the responsibility of the successful design-builder and his architect of record to prepare complete construction documents responding to the fullest intent of the conceptual drawings and specifications.



2/22/06	PROG. REVIEW #1
3/10/06	PROG. REVIEW #2
3/27/06	PROG. REVIEW #3
4/10/06	PROG. REVIEW #4
5/3/06	PRELIM. DESIGN

MARK	DATE	DESCRIPTION
DRAWING ISSUED: 05/03/2006		

NGP PROJECT NO.: 220027

**PRELIMINARY DESIGN**

DRAWING TITLE:

**CIVIL DETAILS**

DRAWING NUMBER:

C501