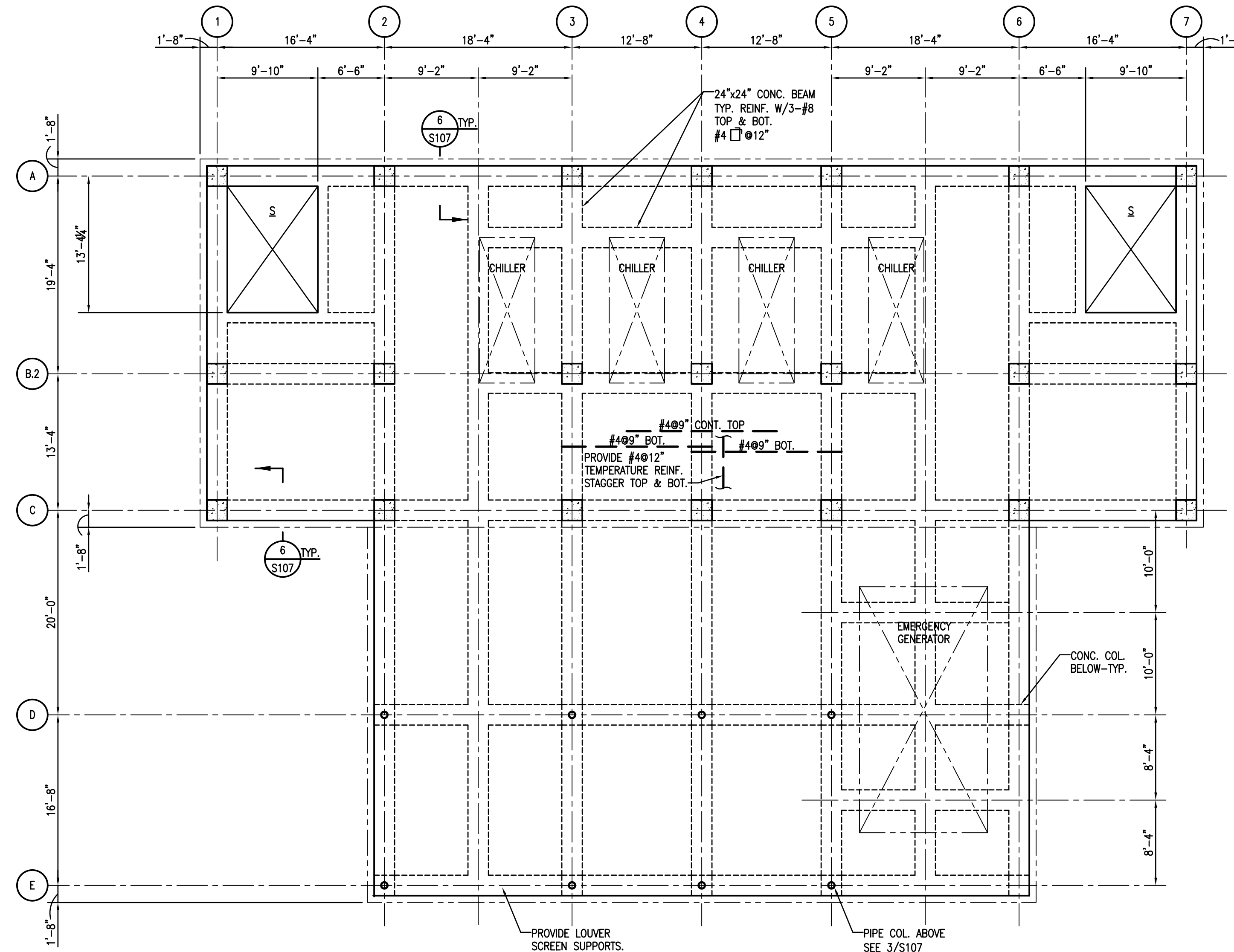


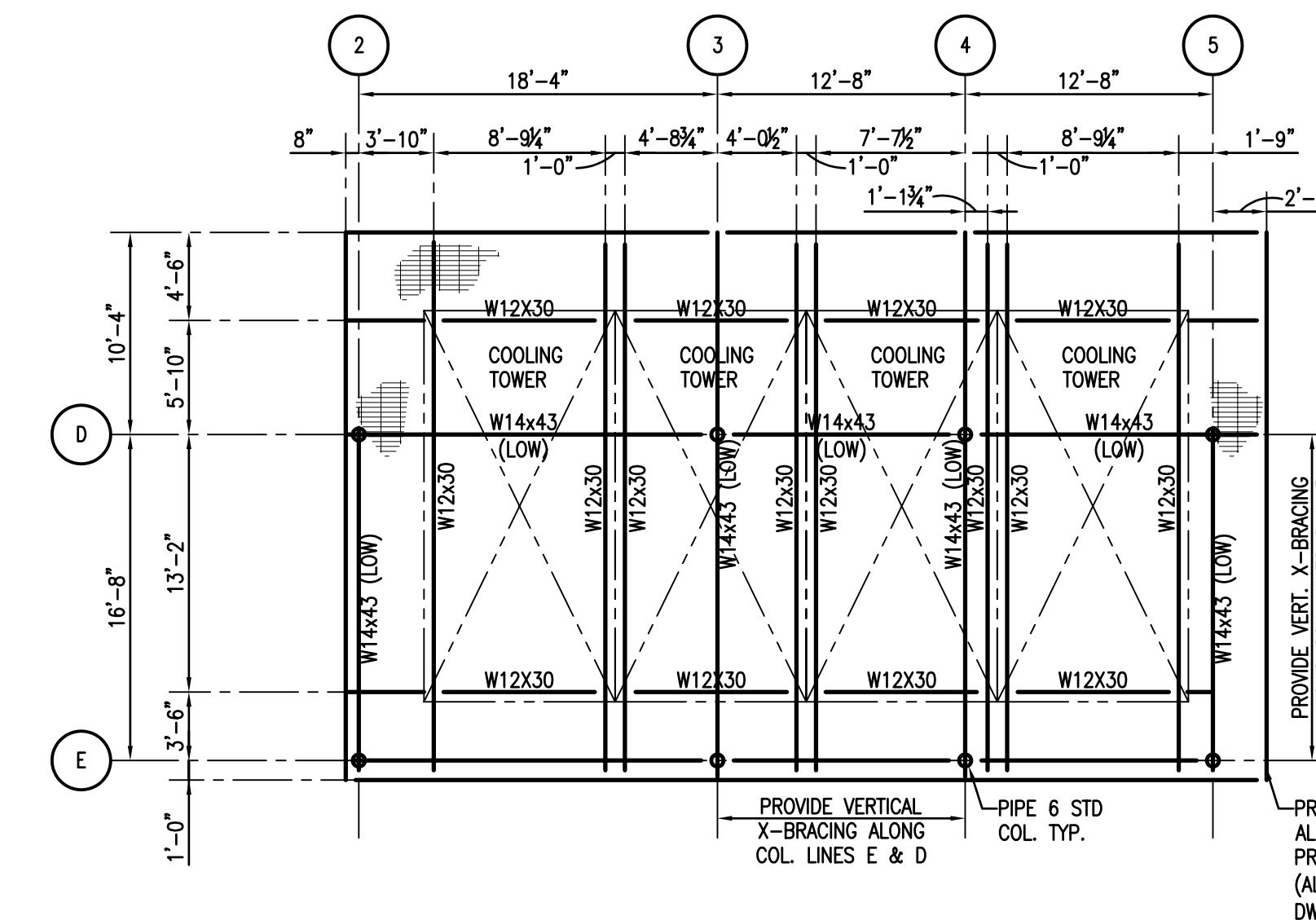
PLAN NOTES: UNLESS NOTED OTHERWISE:
 1. TOP OF SLAB EL. 100'-0" (NOTE: FLOOR ELEVATION DIFFERS FROM MAIN SLAB EL. 100'-0" SHOWN IS ARBITRARY ONLY).
 2. 5" SLAB THROUGHOUT MAIN SLAB. SEE PLAN TEMP. REIN. #3@12" PLACE PERPENDICULAR TO AND ON TOP OF MAIN BOT. REIN.
 3. ● - INDICATES SINGLE PILES. SEE SECTION AND DETAILS FOR CUT-OFF ELEVATIONS.
 4. ○ - INDICATES 4 PILE CAP. SEE S002 FOR DETAILS.
 5. ○ - TOP OF CAP AT EL. 98'-0"

1 CHILLER PLANT FOUNDATION AND FIRST FLOOR FRAMING PLAN W=1'-0" N



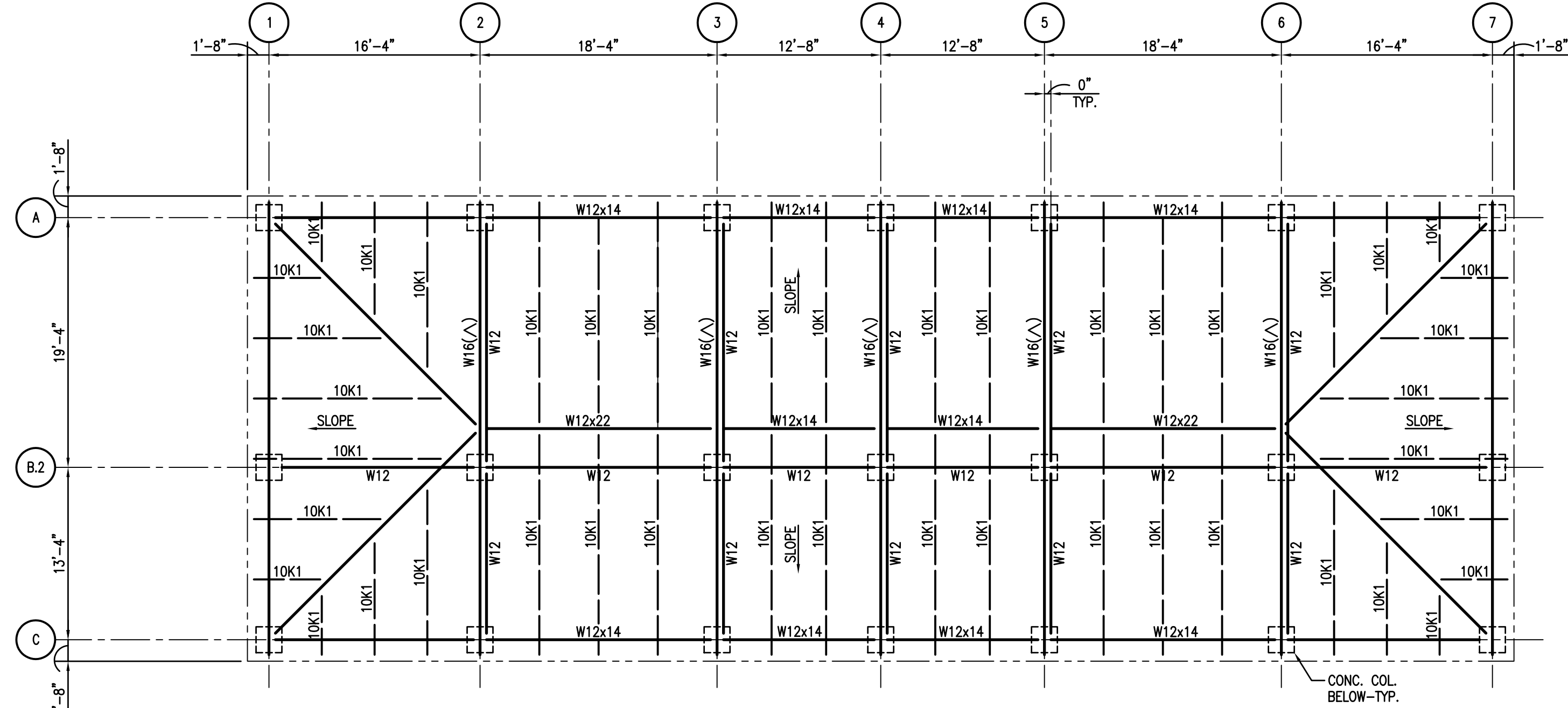
PLAN NOTES: UNLESS NOTED OTHERWISE:
 1. TOP OF SLAB EL. 112'-0"
 2. FLOOR SYSTEM CONSISTS OF 6" CONCRETE SLAB.

2 CHILLER PLANT SECOND FLOOR FRAMING PLAN W=1'-0" N



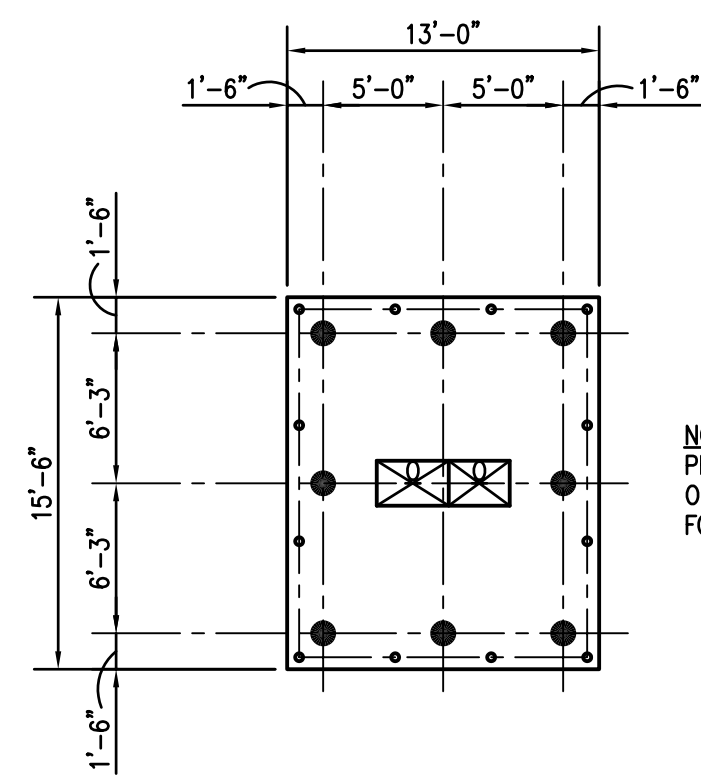
PLAN NOTES: UNLESS NOTED OTHERWISE:
 1. TOP OF STEEL EL. 122'-0"
 2. ■■■ INDICATES METAL GRATING

3 COOLING TOWER SUPPORT FRAMING PLAN W=1'-0" N



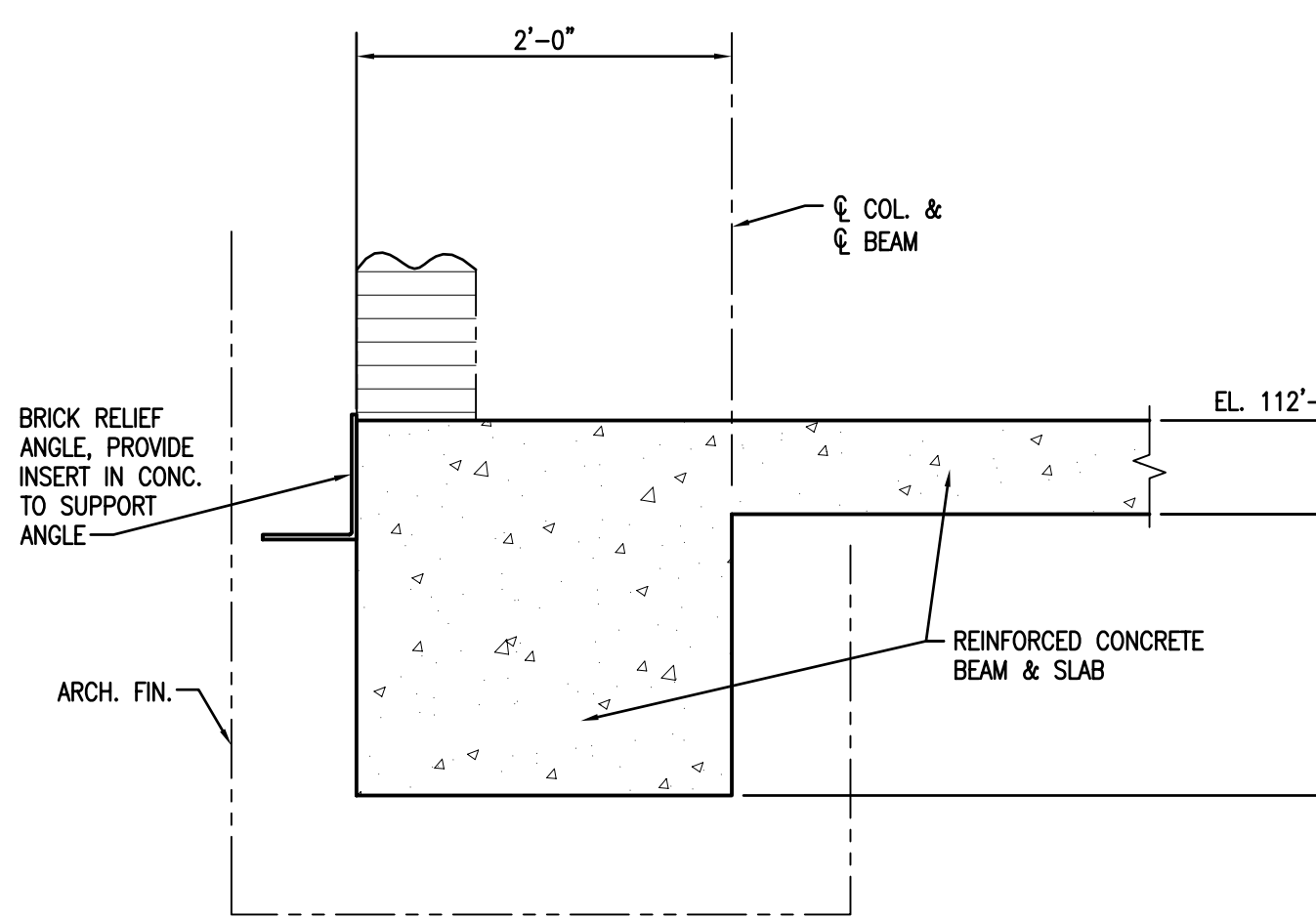
PLAN NOTES: UNLESS NOTED OTHERWISE:
 1. ROOF SYSTEM TO CONSIST OF 12" METAL ROOF DECK. SEE ARCH.
 2. TOP OF STEEL AT EL. 128'-0"

4 CHILLER PLANT ROOF FRAMING PLAN W=1'-0" N



PLAN NOTES: UNLESS NOTED OTHERWISE:
 1. TOP OF SLAB EL. SEE SITE PLAN.
 2. 12" SLAB THROUGHOUT MAIN SLAB. REINFORCING 60# EACH WAY, TOP AND BOTTOM.
 3. ● - INDICATES SINGLE PILES. SEE SECTION AND DETAILS FOR CUT-OFF ELEVATIONS.

5 TRANSFORMER PAD FOUNDATION AND FIRST FLOOR FRAMING PLAN W=1'-0" N



6 SECTION 1"=1'-0"



2/22/06	PROG. REVIEW #1
3/10/06	PROG. REVIEW #2
3/27/06	PROG. REVIEW #3
4/10/06	PROG. REVIEW #4
5/03/06	PRELIM. DESIGN

MARK	DATE	DESCRIPTION
DRAWING ISSUED: 05/03/2006		

NSB PROJECT NO.: 220027

PRELIMINARY DESIGN

DRAWING TITLE:
CHILLER PLANT AND TRANSFORMER PAD FRAMING PLANS



DRAWING NUMBER:

S107

SHEET 21 OF 106

These drawings are conceptual in nature and are not suitable for construction. It is the intent of these documents to clearly delineate the baseline minimum scale, scope and quality of the project. It is the responsibility of the design-builder that his proposal provides for a complete and functional facility responding to relative Army National Guard criteria, recognized industry standards and applicable building codes regardless of the content of these conceptual drawings. Further, it will be the responsibility of the successful design-builder and his architect of record to prepare complete construction documents responding to the fullest intent of the conceptual drawings and specifications.