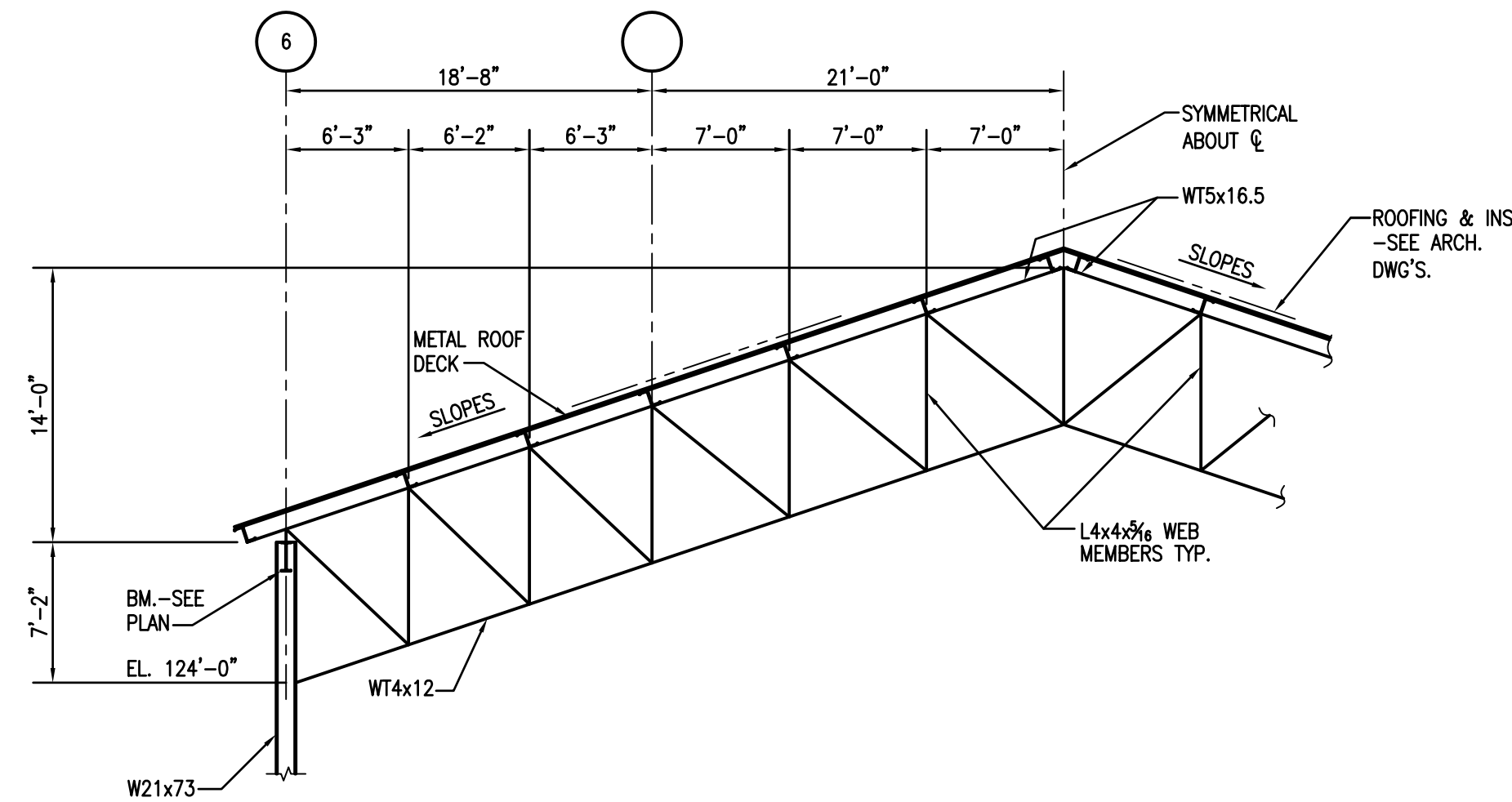


1 ELEVATION-TRUSS T1
S501 W=1'-0"



2 ELEVATION-TRUSS T2
S501 W=1'-0"

BROADMOOR
DESIGN GROUP
PROFESSIONAL ARCHITECTURAL CORPORATION
2740 NORTH ARNOLD ROAD
METairie, LOUISIANA 70002
(504) 885-5401 FAX (504) 885-6065

BltchKnevel
ARCHITECTS
757 ST. CHARLES AVENUE
NEW ORLEANS, LOUISIANA 70130
(504) 524-4634 FAX (504) 524-5128

LOUISIANA ARMY NATIONAL GUARD
141st FIELD ARTILLERY BATTALION
READINESS CENTER
JACKSON BARRACKS NEW ORLEANS, LOUISIANA



2/22/06	PROG. REVIEW #1
3/10/06	PROG. REVIEW #2
3/27/06	PROG. REVIEW #3
4/10/06	PROG. REVIEW #4
5/03/06	PRELIM. DESIGN

MARK DATE DESCRIPTION
DRAWING ISSUED: 05/03/2006

NGB PROJECT NO.: 220027

PRELIMINARY DESIGN

DRAWING TITLE:
TRUSS DETAILS

DRAWING NUMBER:

S501

SHEET 25 OF 106



MORPHY
MAKOFSKY
INCORPORATED
209 PINE BLVD
SUITE 200
NEW ORLEANS, LA 70112
(504) 488-1317
2007 REG. 040119

These drawings are conceptual in nature and are not suitable for construction. It is the intent of these documents to clearly delineate the baseline minimum scale, scope and quality of the project. It is the responsibility of the design-builder that his proposal provides for a complete and functional facility responding to relative Army National Guard criteria, recognized industry standards and applicable building codes regardless of the content of these conceptual drawings. Further, it will be the responsibility of the successful design-builder and his architect of record to prepare complete construction documents responding to the fullest intent of the conceptual drawings and specifications.