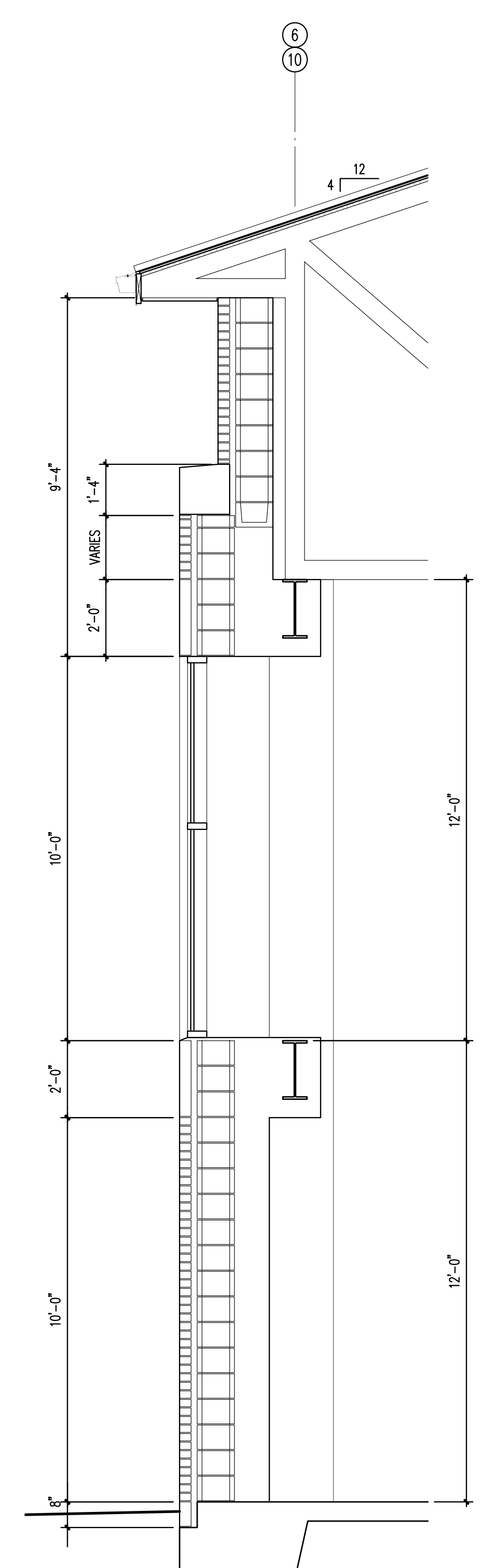
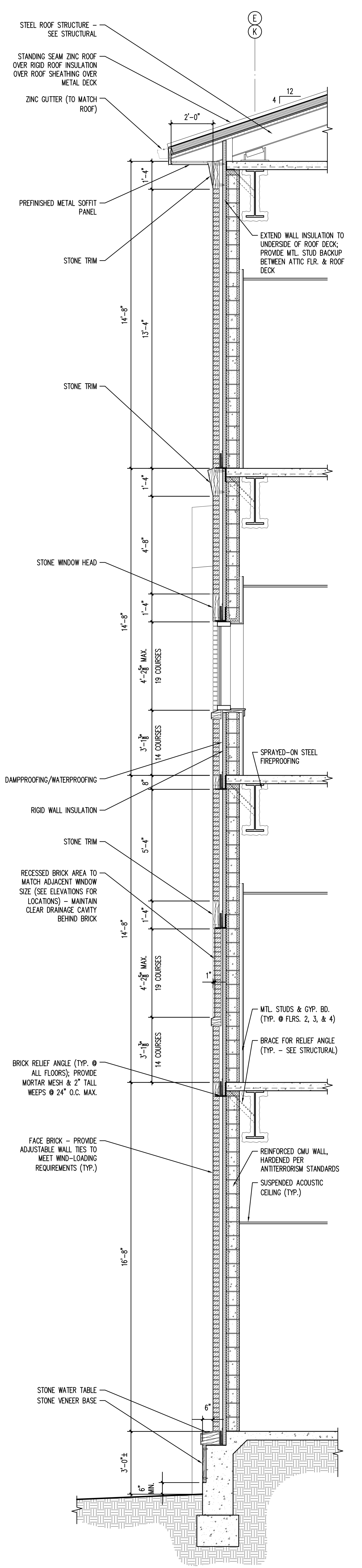


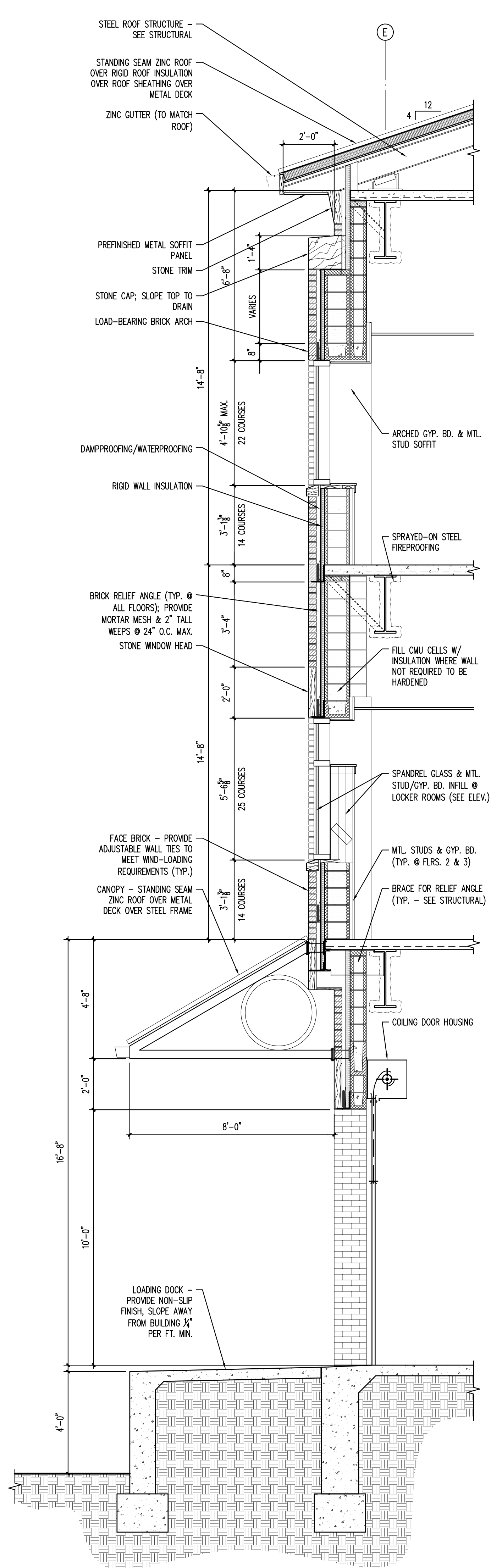
1 TYP. WALL SECT. @ PROJECTED BAY
3/8" = 1'-0"



2 TYP. WALL SECT. @ ASSEMBLY HALL
3/8" = 1'-0"



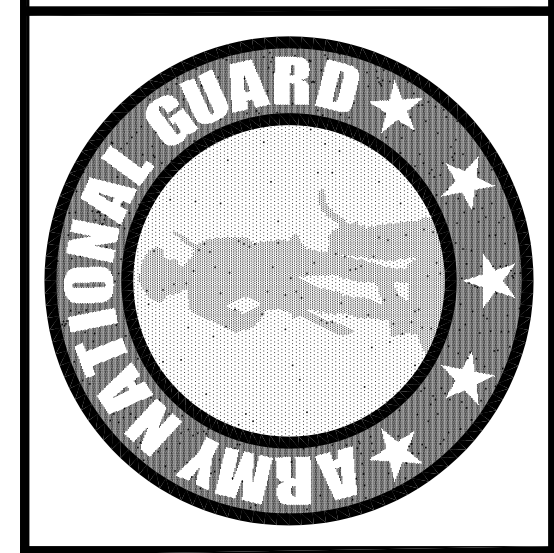
3 TYP. WALL SECTION
3/8" = 1'-0"



4 WALL SECTION @ LOADING DOCK
3/8" = 1'-0"

These drawings are conceptual in nature and are not suitable for construction. It is the intent of these documents to clearly delineate the baseline minimum scope, scope and quality of the project. It is the responsibility of the design-builder that his proposal provides for a complete and functional facility responding to relative Army National Guard criteria, recognized industry standards and applicable building codes regardless of the content of these conceptual drawings. Further, it will be the responsibility of the successful design-builder and his architect of record to prepare complete construction documents responding to the fullest intent of the conceptual drawings and specifications.

LOUISIANA ARMY NATIONAL GUARD
141st FIELD ARTILLERY BATTALION
READINESS CENTER
JACKSON BARRACKS NEW ORLEANS, LOUISIANA



2/22/06	PROG. REVIEW #1
3/10/06	PROG. REVIEW #2
3/27/06	PROG. REVIEW #3
4/10/06	PROG. REVIEW #4
5/3/06	PRELIM. DESIGN

MARK	DATE	DESCRIPTION
	DRAWING ISSUED:	05/03/2006

NOB PROJECT NO.: 220027

PRELIMINARY DESIGN

DRAWING TITLE:
WALL SECTIONS

DRAWING NUMBER: