



2/22/06	PROG. REVIEW #1
3/10/06	PROG. REVIEW #2
3/27/06	PROG. REVIEW #3
4/10/06	PROG. REVIEW #4
5/3/06	PRELIM. DESIGN

MARK	DATE	DESCRIPTION

DRAWING ISSUED: 05/03/2006

NOB PROJECT NO.: 220027

PRELIMINARY DESIGN

DRAWING TITLE:

THIRD FLOOR FIRE PROTECTION PLAN

DRAWING NUMBER:

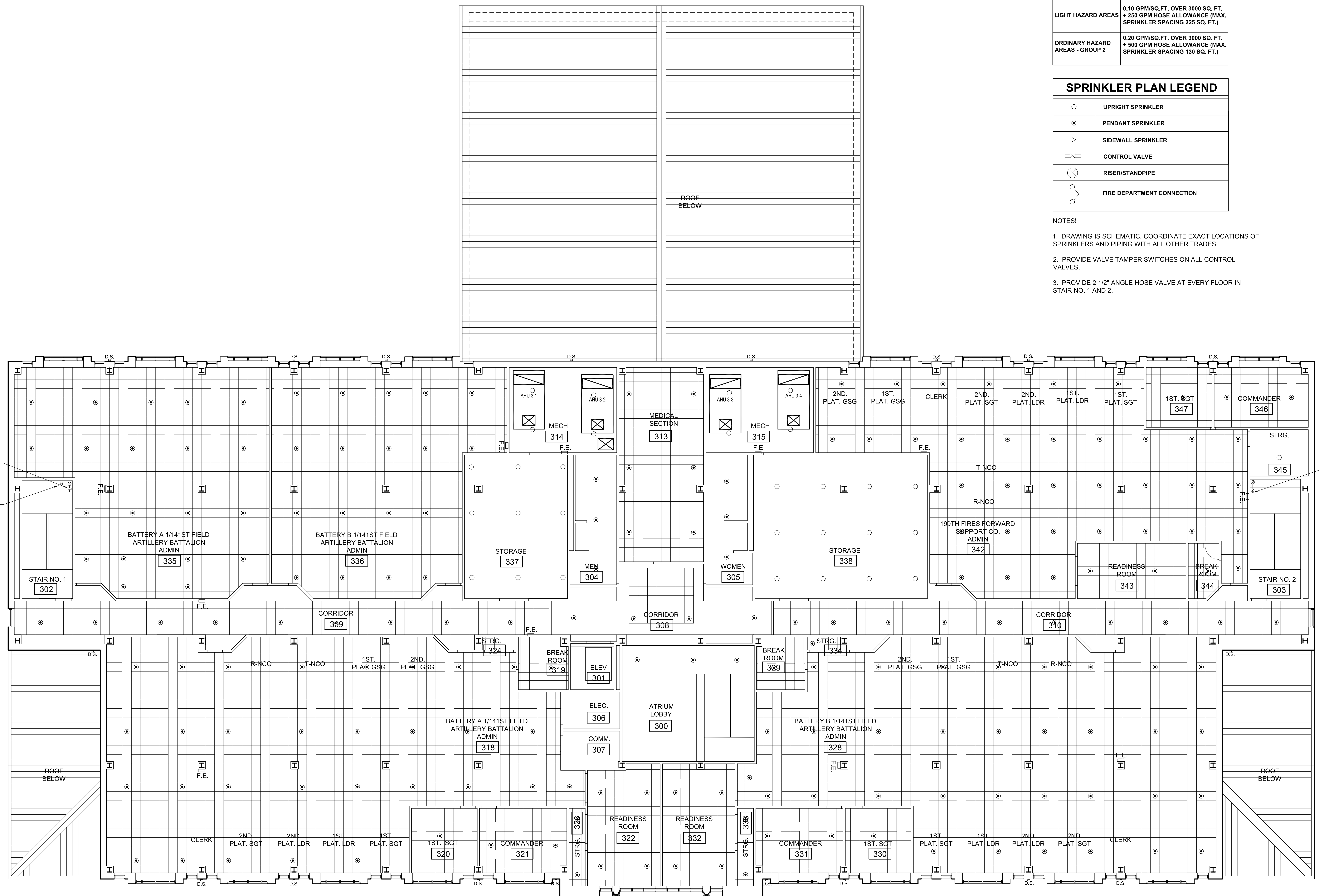
FP103

SHEET 56 OF 106

DESIGN CRITERIA	
ALL BUILDING AREAS ARE LIGHT HAZARD EXCEPT STORAGE AREAS ON FIRST FLOOR AND ROOMS 127, 129, 131, 133, & 135 WHICH ARE ORDINARY HAZARD GROUP 2	
LIGHT HAZARD AREAS	0.10 GPM/SQ.FT. OVER 3000 SQ. FT. + 250 GPM HOSE ALLOWANCE (MAX. SPRINKLER SPACING 225 SQ. FT.)
ORDINARY HAZARD AREAS - GROUP 2	0.20 GPM/SQ.FT. OVER 3000 SQ. FT. + 500 GPM HOSE ALLOWANCE (MAX. SPRINKLER SPACING 130 SQ. FT.)

SPRINKLER PLAN LEGEND	
○	UPRIGHT SPRINKLER
⊙	PENDANT SPRINKLER
▷	SIDEWALL SPRINKLER
⊞	CONTROL VALVE
⊗	RISER/STANDPIPE
⊕	FIRE DEPARTMENT CONNECTION

- NOTES!
- DRAWING IS SCHEMATIC. COORDINATE EXACT LOCATIONS OF SPRINKLERS AND PIPING WITH ALL OTHER TRADES.
 - PROVIDE VALVE TAMPER SWITCHES ON ALL CONTROL VALVES.
 - PROVIDE 2 1/2" ANGLE HOSE VALVE AT EVERY FLOOR IN STAIR NO. 1 AND 2.

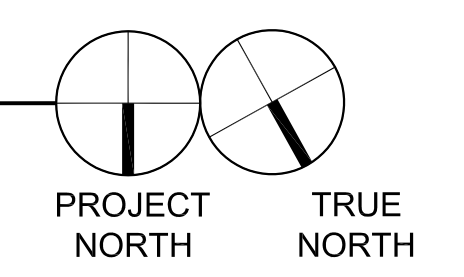
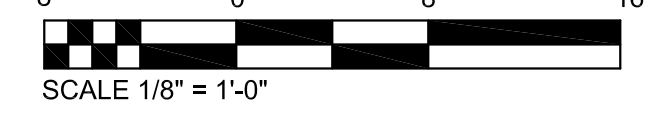


RE: DETAIL 1 ON SHEET FP101

CONNECT TO STANDPIPE IN STAIR NO. 2

CONNECT TO COMBINATION RISER IN STAIR NO. 1

3RD FLOOR FIRE PROTECTION PLAN



These drawings are conceptual in nature and are not suitable for construction. It is the intent of these documents to clearly delineate the baseline minimum scale, scope and quality of the project. It is the responsibility of the design-builder that his proposal provides for a complete and functional facility responding to relative Army National Guard criteria, recognized industry standards and applicable building codes regardless of the content of these conceptual drawings. Further, it will be the responsibility of the successful design-builder and his architect of record to prepare complete construction documents responding to the fullest intent of the conceptual drawings and specifications.