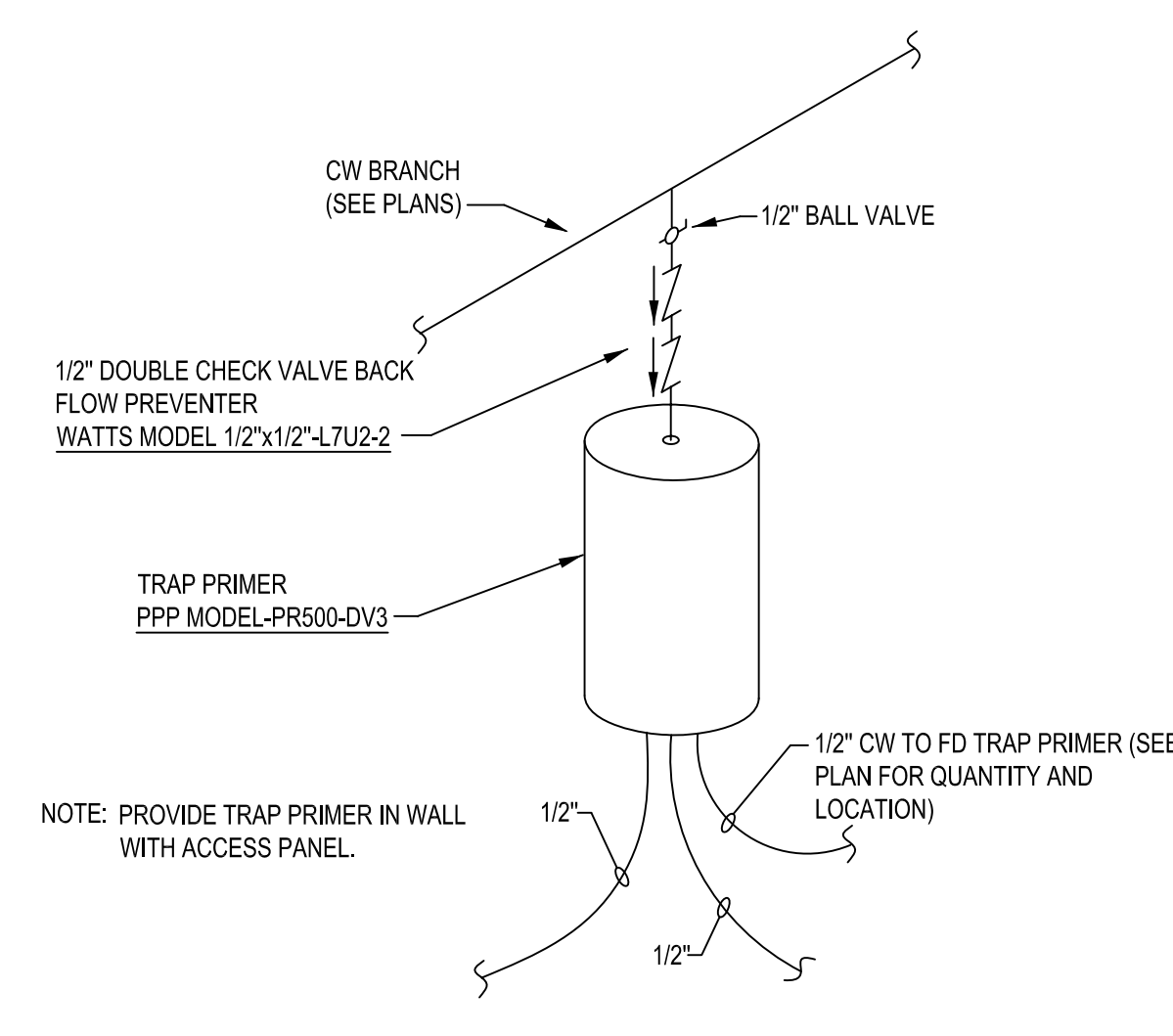
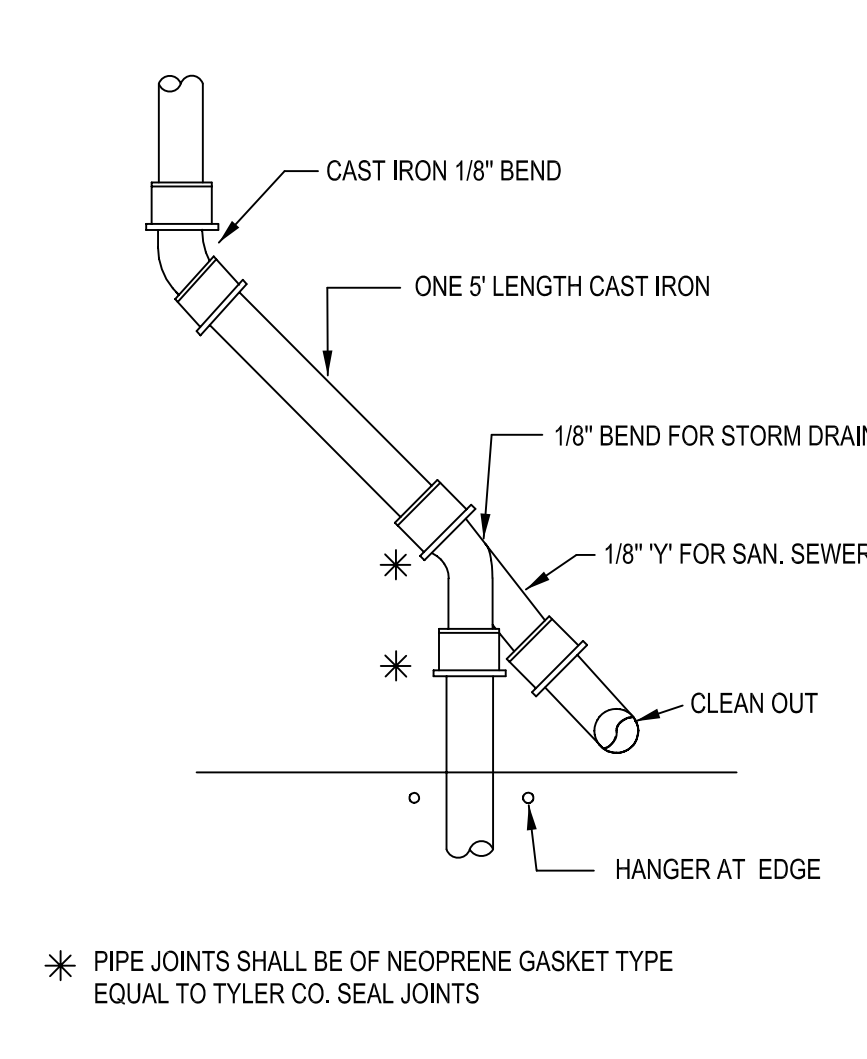


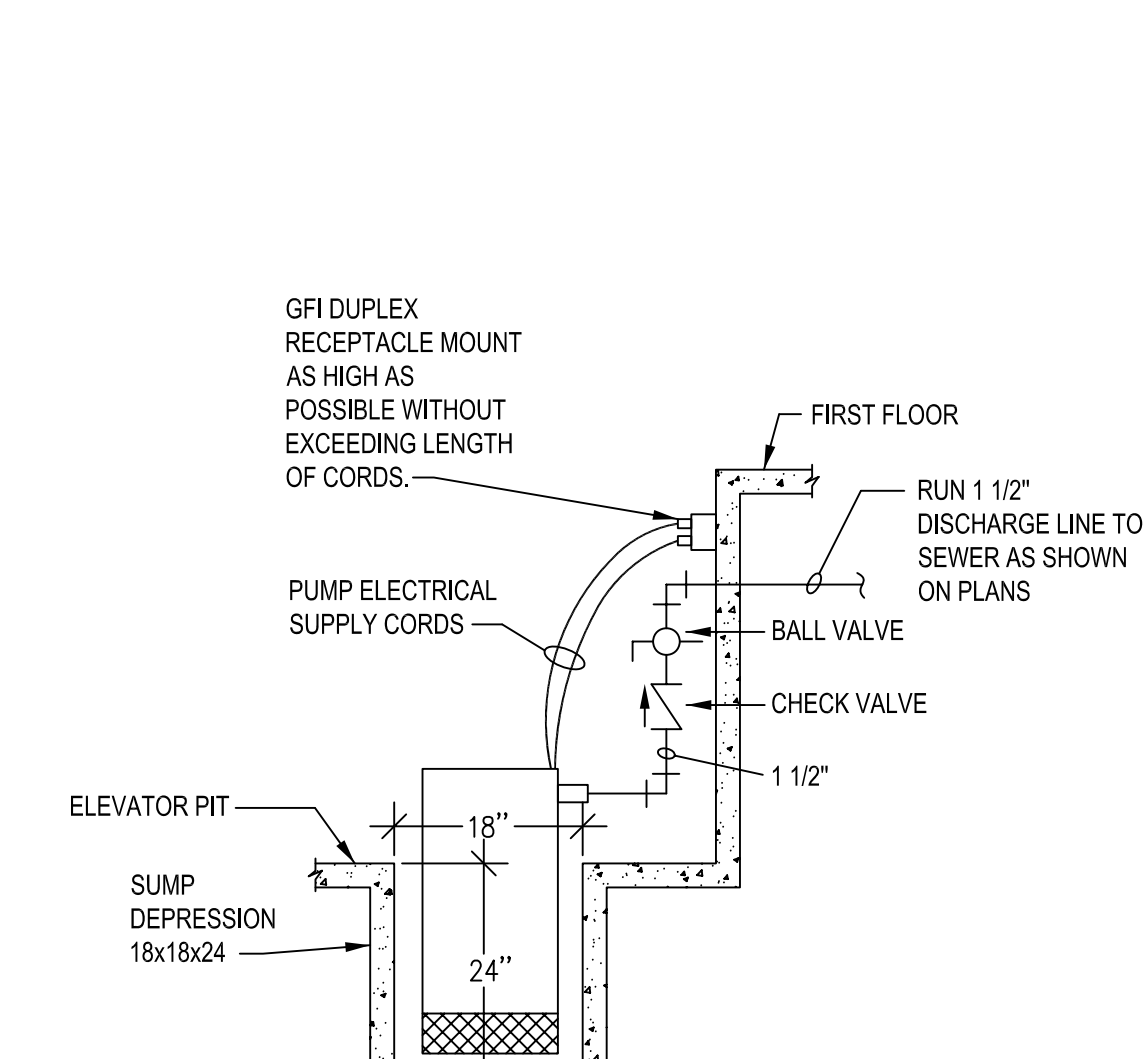
DOMESTIC WATER BOOSTER SYSTEM DETAIL  
NO SCALE



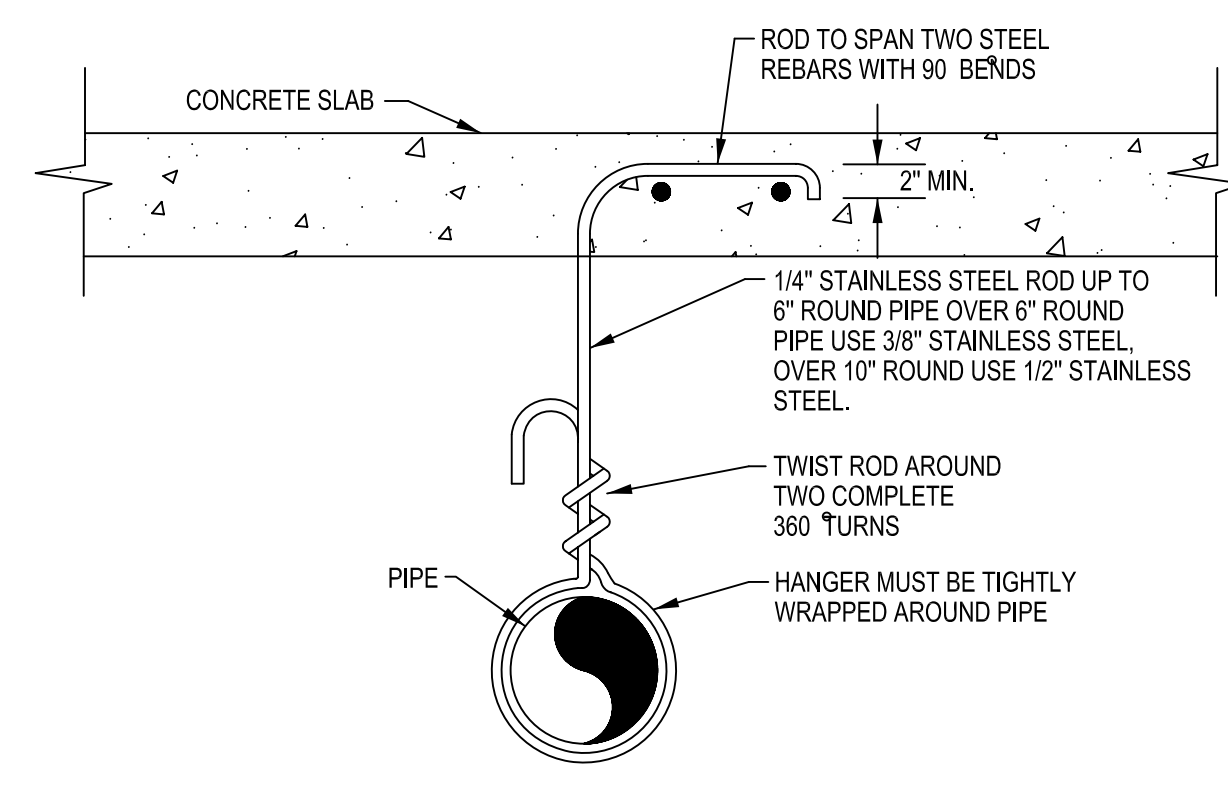
TYPICAL TRAP PRIMER PIPING DETAIL  
NO SCALE



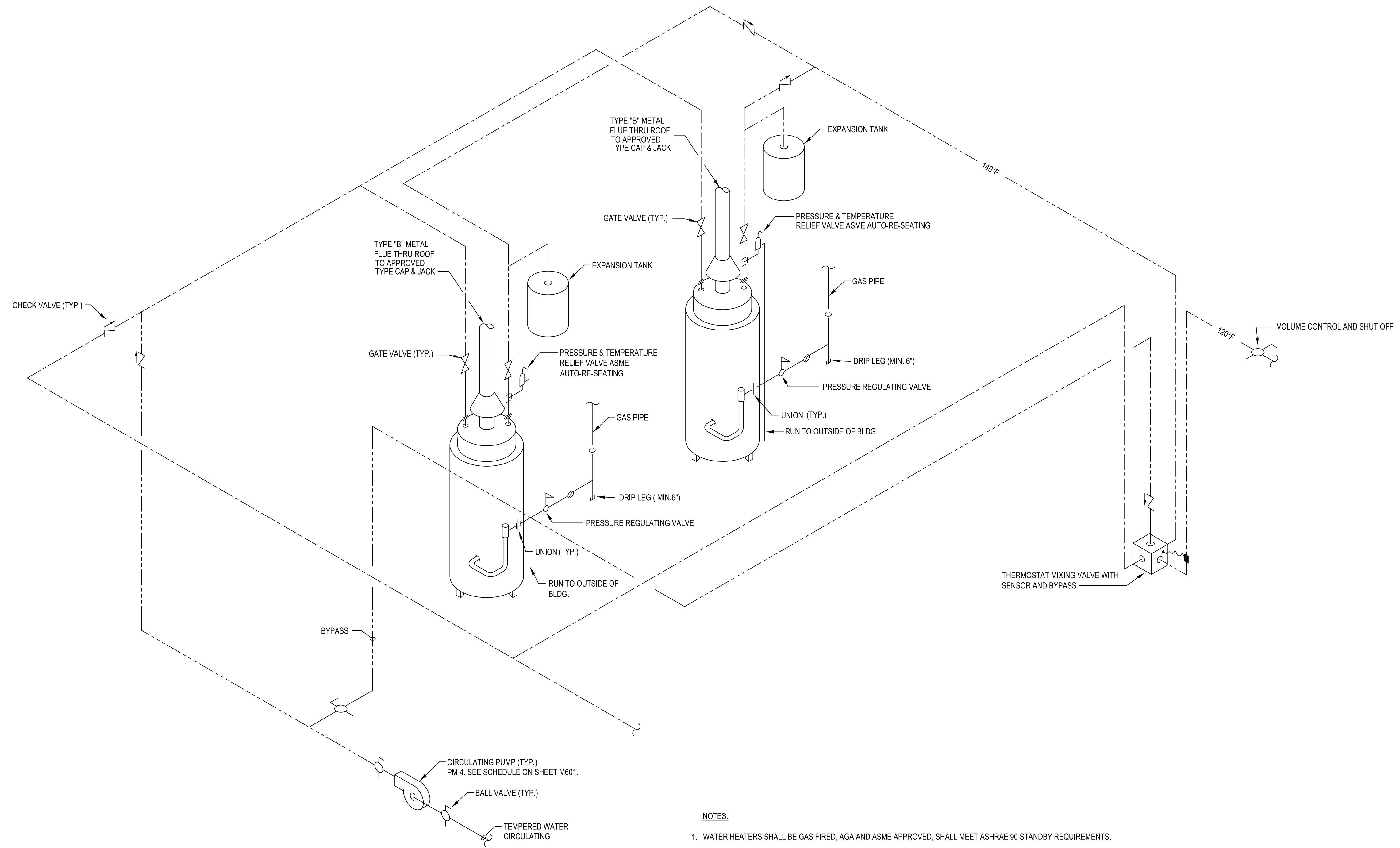
SWING JOINT DETAIL  
NO SCALE



ELEVATOR PIT SUMP PUMP DETAIL  
NO SCALE



PIPE HANGER UNDER SLAB DETAIL  
NO SCALE

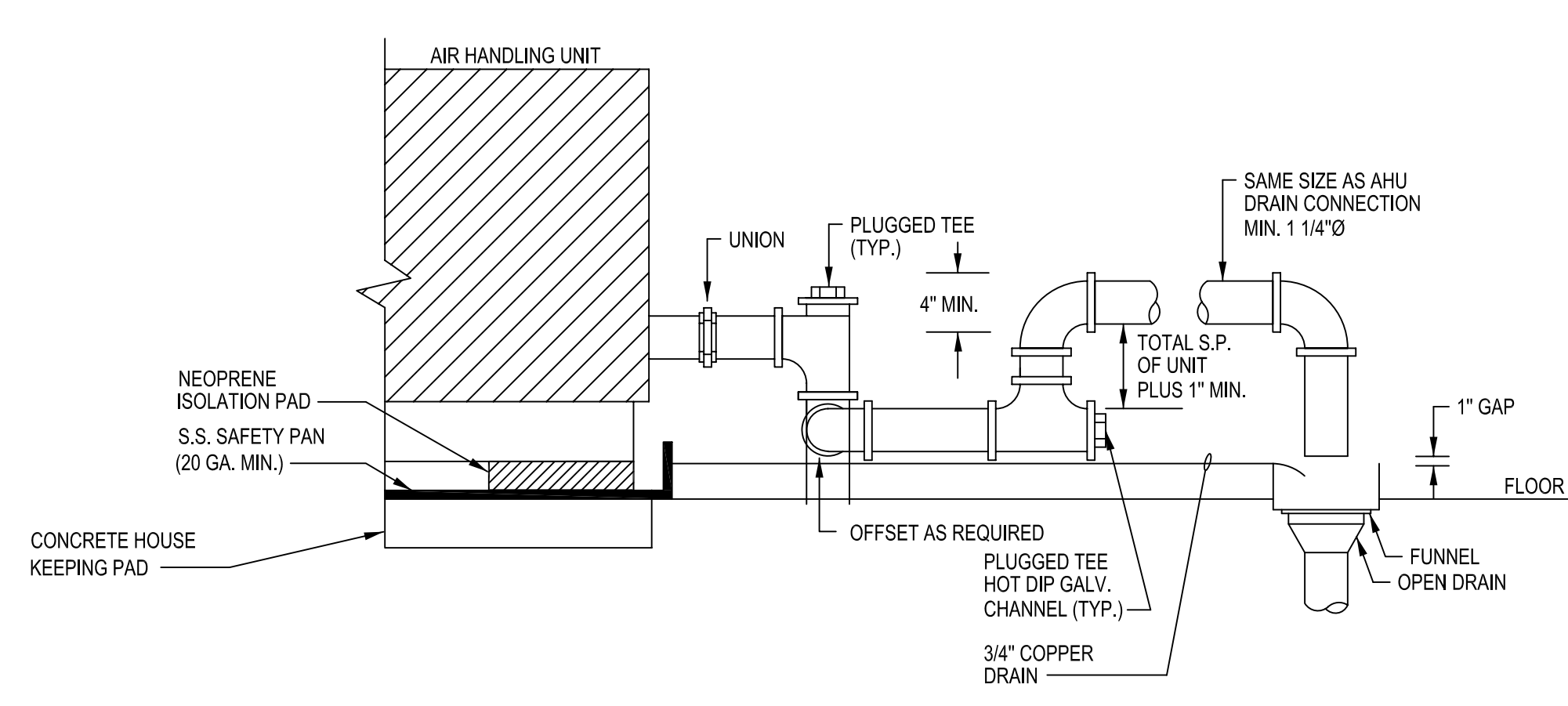


- NOTES:
1. WATER HEATERS SHALL BE GAS FIRED, AGA AND ASME APPROVED, SHALL MEET ASHRAE 90 STANDBY REQUIREMENTS.
  2. CIRCULATING PUMP SHALL BE ALL BRONZE.

GAS WATER HEATER DETAIL  
NO SCALE

MARK	GAL.	RECOVERY		WBT	STORAGE TEMP	REMARKS
		BTU/R	OF			
WH-1.2	250	1250	1,000,000	140°		POLYSHIELD NATURAL GAS FIRED TURBO POWERED WATER HEATER

MARK	FIXTURE	WASTE	H.W.	C.W.	DESCRIPTION
P1	WC	4"	--	1"	WALL MOUNTED WATER CLOSET WITH SENSOR OPERATED FLUSH VALVE
P1A	WC	4"	--	1"	ADA WALL MOUNTED WATER CLOSET WITH SENSOR OPERATED FLUSH VALVE
P2	LAV	1 1/2"	1/2"	1/2"	COUNTERTOP LAY-IN LAVATORY WITH SENSOR FAUCET AND INSULATED TRAP FOR ADA USE
P2A	LAV	1 1/2"	1/2"	1/2"	ADA WALL HUNG LAVATORY WITH INSULATED TRAP AND WATER PIPING
P3	UR	2"	-	1"	WALL HUNG URINAL WITH SENSOR OPERATED FLUSH VALVE
P3A	UR	2"	-	1"	ADA WALL HUNG URINAL WITH SENSOR OPERATED FLUSH VALVE
P4	SINK	1 1/2"	1/2"	1/2"	TWO-COMPARTMENT S.S. LAY-IN SINK
P5	SS	3"	1/2"	1/2"	TERRAZZO MOP BASIN
P6	DF	1 1/2"	--	1/2"	SPLIT LEVEL WALL MOUNTED ELECTRIC WATER COOLER
P7	SHOWER	2"	1/2"	1/2"	SHOWER
P7A	SHOWER	2"	1/2"	1/2"	ADA SHOWER
P8	EYEWASH	1 1/2"	1/2"	1/2"	EYEWASH EMERGENCY SHOWER WITH TEMPERED WATER SUPPLY



AHU UNIT CONDENSATE DRAIN DETAIL  
NO SCALE



DATE	PROG.	REVIEW #
2/22/06	PROG.	REVIEW #1
3/10/06	PROG.	REVIEW #2
3/27/06	PROG.	REVIEW #3
4/10/06	PROG.	REVIEW #4
5/3/06	PRELIM.	DESIGN

MARK DATE DESCRIPTION  
DRAWING ISSUED: 05/03/2006

NGB PROJECT NO.: 220027

PRELIMINARY DESIGN

DRAWING TITLE:  
PLUMBING SCHEDULES AND DETAILS

DRAWING NUMBER:

**LUCIEN T. VIVIAN JR. & ASSOC., INC.**  
CONSULTING ENGINEERS  
121 HICKORY AVENUE HARAHAN, LA 70123 (504) 228-5409

These drawings are conceptual in nature and are not suitable for construction. It is the intent of these documents to clearly delineate the baseline minimum scope and quality of the project. It is the responsibility of the design-builder that his proposal provides for a complete and functional facility responding to relative Army National Guard criteria, recognized industry standards and applicable building codes regardless of the content of these conceptual drawings. Further, it will be the responsibility of the successful design-builder and his architect of record to prepare complete construction documents responding to the fullest intent of the conceptual drawings and specifications.