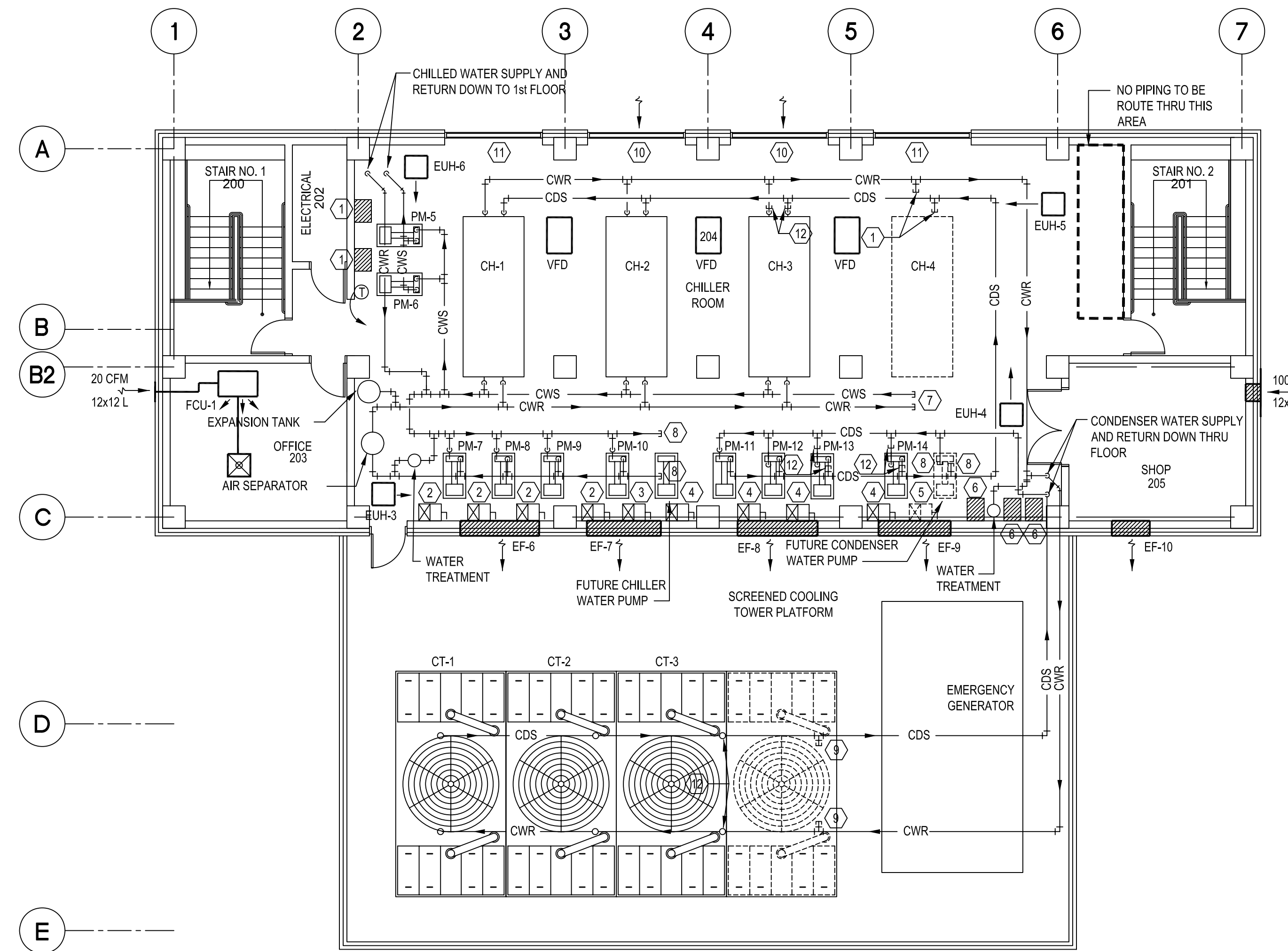


**FIRST FLOOR PLAN**  
 SCALE 1/8" = 1'-0"  
 PROJECT NORTH



**SECOND FLOOR PLAN**  
 SCALE 1/8" = 1'-0"  
 PROJECT NORTH

**SPECIFIC NOTES THIS SHEET:**

- A. VENTILATION RATES OF CHILLER ROOM SHALL BE IN ACCORDANCE WITH ASHRAE 15-2004. EXHAUST FANS SHALL BE INTERLOCKED WITH REFRIGERANT DETECTION SYSTEM.
- B. EXHAUST FANS SHALL BE INTERLOCKED WITH THERMOSTAT.

**SPECIFIC NOTES THIS SHEET:**

- ① SECONDARY CHILLER WATER PUMP VARIABLE FREQUENCY DRIVE.
- ② PRIMARY CHILLED WATER PUMP VARIABLE FREQUENCY DRIVE.
- ③ FUTURE PRIMARY CHILLED WATER PUMP VARIABLE FREQUENCY DRIVE.
- ④ CONDENSER WATER PUMP VARIABLE FREQUENCY DRIVE.
- ⑤ FUTURE CONDENSER WATER PUMP VARIABLE FREQUENCY DRIVE.
- ⑥ COOLING TOWER VARIABLE FREQUENCY DRIVE.
- ⑦ CAP FOR FUTURE CHILLER. PROVIDE VALVE AT CAP.
- ⑧ CAP FOR FUTURE PUMP. PROVIDE VALVE AT CAP.
- ⑨ CAP FOR FUTURE COOLING TOWER. PROVIDE VALVE AT CAP.
- ⑩ PROVIDE MOTORIZED DAMPERS ON BACK OF LOUVERS. INTERLOCK DAMPER WITH EXHAUST FAN EF-6 AND EF-8.
- ⑪ PROVIDE MOTORIZED DAMPERS ON BACK OF LOUVERS. INTERLOCK DAMPER WITH EXHAUST FAN EF-7 AND EF-9.
- ⑫ CAP HERE UNDER BASE BID.

ALL WORK, INCLUDING PIPING, VALVES AND CONTROLS FOR THE FURNISHING AND INSTALLATION OF: CHILLER CH-3 (INCL. THE VFD); COOLING TOWER CT-3; CHILLED WATER PUMP M-10; AND CONDENSER WATER PUMP PM-14, SHALL BE INCLUDED AS PART OF ADD ALTERNATE 1A.

**LUCIEN T. VIVIEN JR. & ASSOC., INC.**  
 CONSULTING ENGINEERS  
 1321 HICKORY AVENUE HARAHAN, LA 70123 (504) 228-5409

These drawings are conceptual in nature and are not suitable for construction. It is the intent of these documents to clearly delineate the baseline minimum scope, scope and quality of the project. It is the responsibility of the design-builder that his proposal provides for a complete and functional facility responding to relative Army National Guard criteria, recognized industry standards and applicable building codes regardless of the content of these conceptual drawings. Further, it will be the responsibility of the successful design-builder and his architect of record to prepare complete construction documents responding to the fullest intent of the conceptual drawings and specifications.



MARK	DATE	DESCRIPTION
△	2/22/06	PROG. REVIEW #1
△	3/10/06	PROG. REVIEW #2
△	3/27/06	PROG. REVIEW #3
△	4/10/06	PROG. REVIEW #4
△	5/3/06	PRELIM. DESIGN

MARK DATE DESCRIPTION  
 DRAWING ISSUED: 05/03/2006

NGB PROJECT NO.: 220027

PRELIMINARY DESIGN

DRAWING TITLE:  
 CENTRAL PLANT MECHANICAL

DRAWING NUMBER: