

### SIMPSON PA TABLE

Model No.	L	Min. Embed Depth	Nails	Allowable Uplift Loads		Code Ref.
				(133)	(160)	
PA 51	51	4	9-16d	1690	2030	8, 36, 121
PA 68	70	4	9-16d	1690	2030	

### UPLIFT CONNECTIONS—130MPH WINDS EXP. "B"

CONNECTION	FRAMING SPACING (in.)	ROOF SPAN (ft.)	Uplift Capacity (lb.)			NUM. OF 8d COM. NAILS OR 10d BOX NAILS IN EA. END OF 1-1/4"x20 GA. STRAP
			U	L	S	
ROOF ASSEMBLY TO WALL ASSEMBLY	16" O.C.	17	386	246	109R	4
WALL ASSEMBLY TO WALL ASSEMBLY	16" O.C.	17	386	246	109R	4
WALL ASSEMBLY TO FOUNDATION	16" O.C.	17	170	185	436	4

### THERMAL COMPONENT CRITERIA (U-FACTOR AND R-VALUE)

MAX. GLAZING U-FACTOR	MINIMUM INSULATION R-VALUE					
	SHGC	CEILINGS	WALLS	FLOORS	BASEMENT WALLS	CRAWL SPACE
.75	.40	R-30	R-13	R-13	R-5	R-5

### ROOF SHEATH. OR CLAD. REQ. FOR WIND LOAD—EXP. B

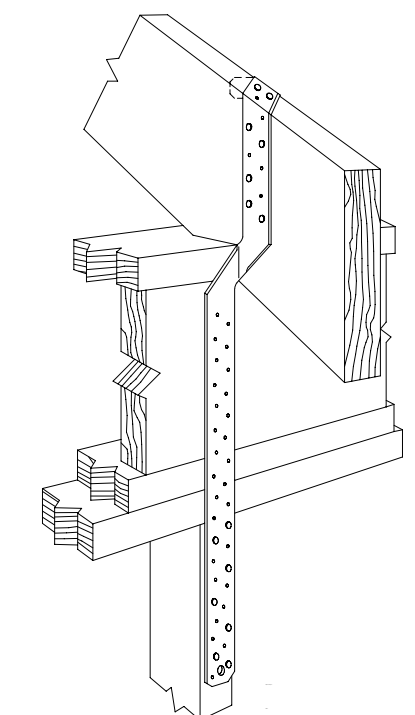
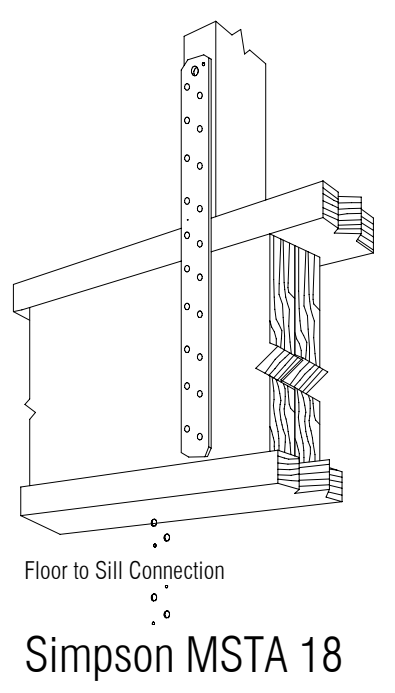
SHEATHING LOCATION	RAFTER/TRUSS SPAC.	MAX. NAIL SPAC. FOR 8d COM. NAILS OR 10d BOX NAILS (INCHES, O.C.)	
		E	F
INTERIOR ZONE	12" O.C.	6	12
	16" O.C.	6	12
	24" O.C.	6	12
PERIMETER EDGE ZONE	12" O.C.	6	12
	16" O.C.	6	6
	24" O.C.	6	6

130 MPH WINDS—EXPOSURE "B" (TYP.)

### WALL SHEATH. OR CLAD. REQ. FOR WIND LOAD—EXP. B

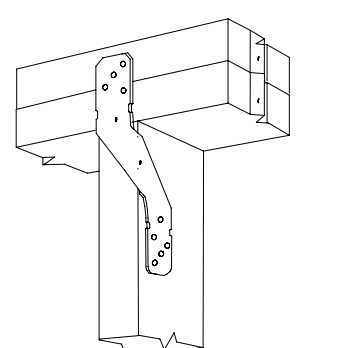
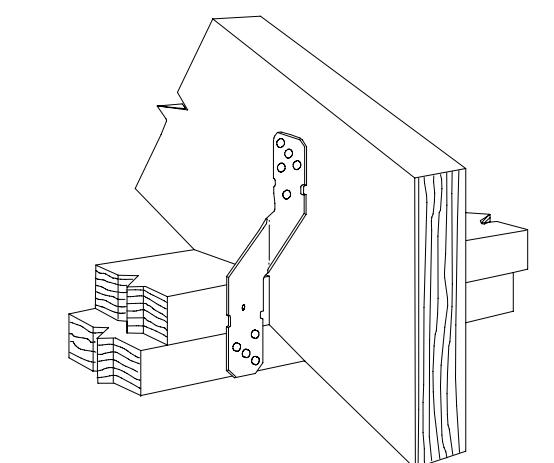
SHEATHING LOCATION	STUD SPAC.	MAX. NAIL SPAC. FOR 8d COM. NAILS OR 10d BOX NAILS (INCHES, O.C.)	
		E	F
INTERIOR ZONE	12" O.C.	6	12
	16" O.C.	6	12
	24" O.C.	6	12
PERIMETER EDGE ZONE	12" O.C.	6	12
	16" O.C.	6	12
	24" O.C.	6	12

130 MPH WINDS—EXPOSURE "B" (TYP.)



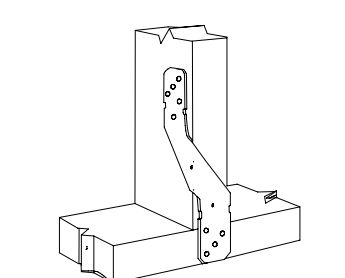
2 WALL TO SILL  
1 1/2" = 1'-0"

9 SIMPSON KNEEWALL STRAP  
1 1/2" = 1'-0"

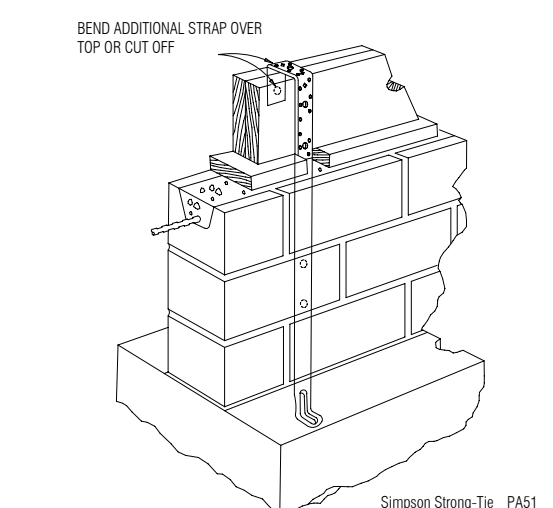


5 SIMPSON H8 RAFTER TO TOP PLATE  
1 1/2" = 1'-0"

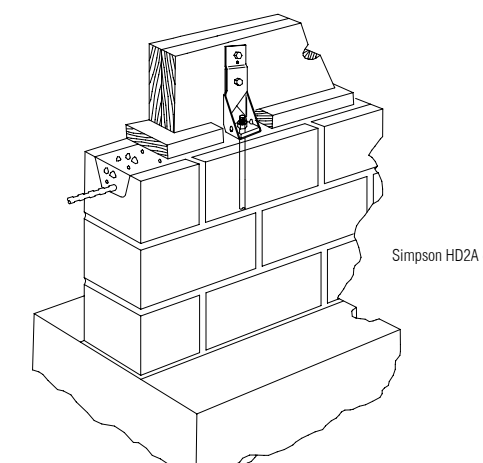
7 SIMPSON H8 STUD TO TOP PLATE  
1 1/2" = 1'-0"



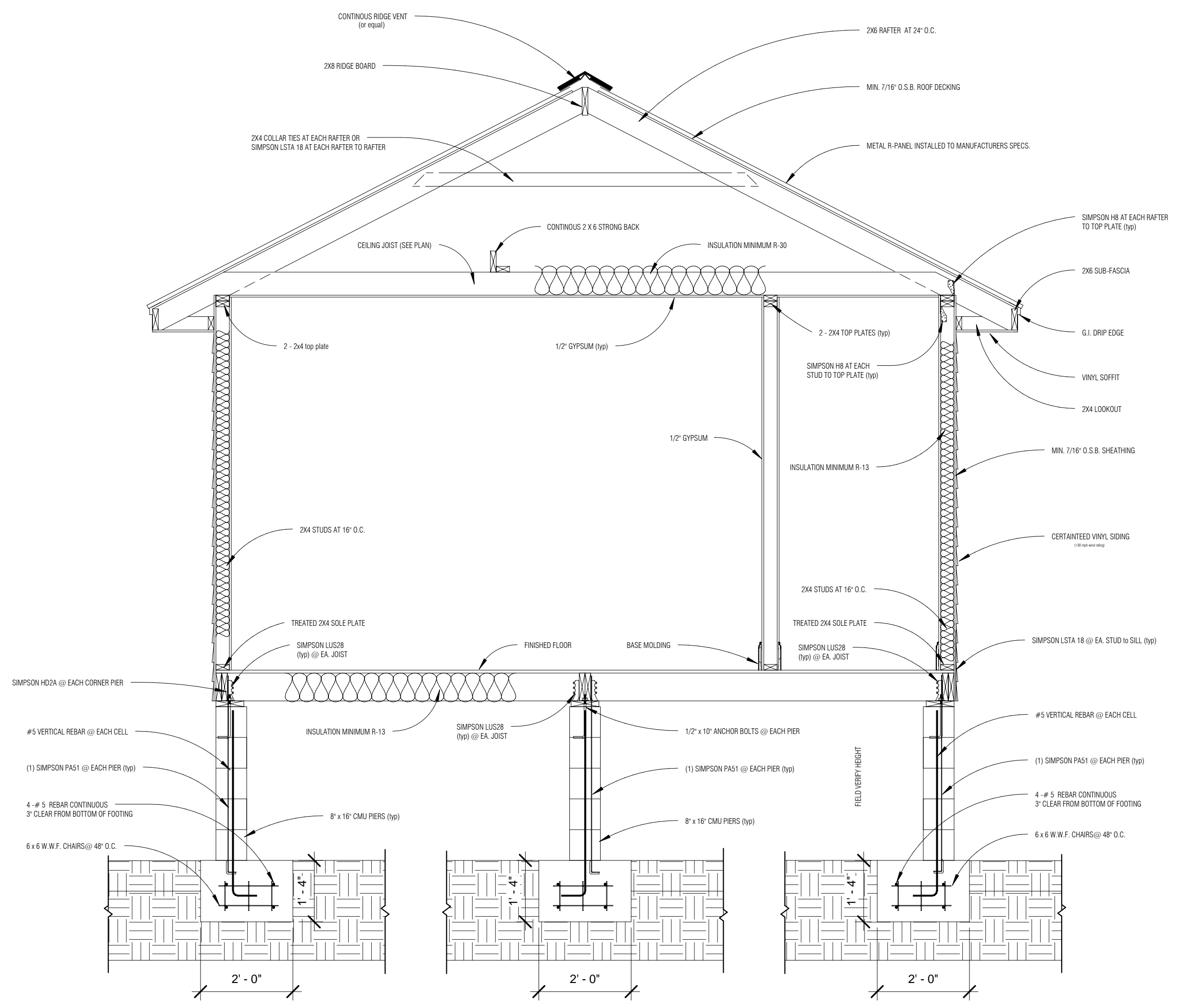
6 SIMPSON H8 STUD TO SOLE PLATE  
1 1/2" = 1'-0"



4 SIMPSON PA 51  
1/8" = 1'-0"



3 SIMPSON HD2A  
1/8" = 1'-0"



CROSS SECTION

### JACK STUD REQ.—EXP. B FOR EXT. LOAD BEARING WALLS

HEADER SUPPORTING	HEADER SPAN (ft.)	HEADER WIDTH			
		3"	4.5"	5"	6.5"
ROOF AND CEILING	2	1	1	1	1
	4	1	1	1	1
	6	2	1	2	2
	8	2	2	2	2
	10	3	2	2	2
	12	3	2	2	2
	14	4	3	2	2
	16	4	3	3	2
ROOF, CEILING, AND 1 CENTER BEARING FLR.	2	1	1	1	1
	4	2	1	1	1
	6	2	2	2	1
	8	3	2	2	3
	10	4	3	2	2
	12	4	3	3	2
	14	5	3	3	3
	16	5	4	3	3

HEADER WIDTH—3" (2-2x), 4.5" (3-2x), 5" (4-2x)  
EACH W/ 1/2" PLYWD. SPACER BETWEEN

### HEADER SPANS—EXPOSURE B FOR EXTERIOR LOADBEARING WALLS

HEADER SIZE	SPAN	NO. FULL HGT. STUDS REQ. AT EA. END
(2) 2x4'S	4'-7"	2
(2) 2x6'S	5'-6"	2
(2) 2x8'S	6'-1"	3
(2) 2x10'S	6'-8"	3
(2) 2x12'S	7'-1"	3
(3) 2x8'S	7'-5"	3
(3) 2x10'S	8'-3"	3
(3) 2x12'S	8'-8"	3
(4) 2x8'S	8'-7"	3
(4) 2x10'S	9'-6"	3
(4) 2x12'S	10'-0"	4

130MPH WINDS—EXPOSURE "B"(TYP.) EACH W/ 1/2" PLYWD. SPACER BETWEEN

NOTE:  
BUILDING WIDTH IS MEASURED PERPENDICULAR TO THE RIDGE. FOR WIDTHS BETWEEN THOSE SHOWN, SPANS ARE PERMITTED TO BE INTERPOLATED.

NOTE:  
ALL HEADERS SHALL HAVE SOLID BLOCKING



1710 ROSELAWN DR.  
SLIDELL, LA. 70460  
985.641.7237

NOTE: Although every effort has been made in preparing these plans, the contractor is ultimately responsible for checking plans for accuracy and for errors before construction begins.

No.	Description	Date

Fred Ferrera

Cross Section w/ Pier

Project number	0731
Date	5/10/08
Drawn by	JC
Checked by	JC

## A104

Scale	As indicated
-------	--------------

No copies, transmissions, reproductions, or electronic manipulation of any portion of these drawings in whole or in part are to be made without the expressed written permission of Cramer Design. All designs indicated in these drawings are property of Cramer Design.