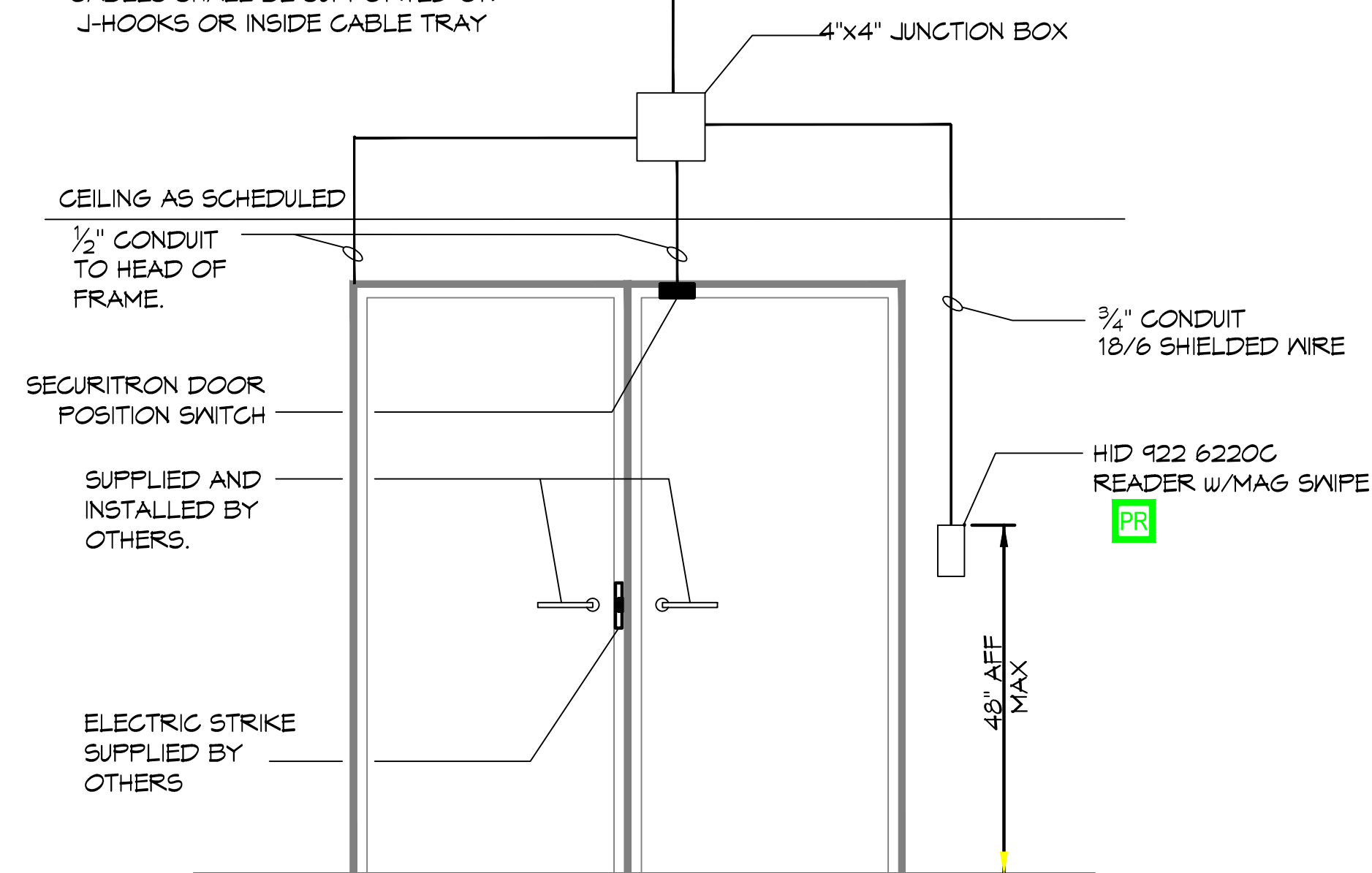


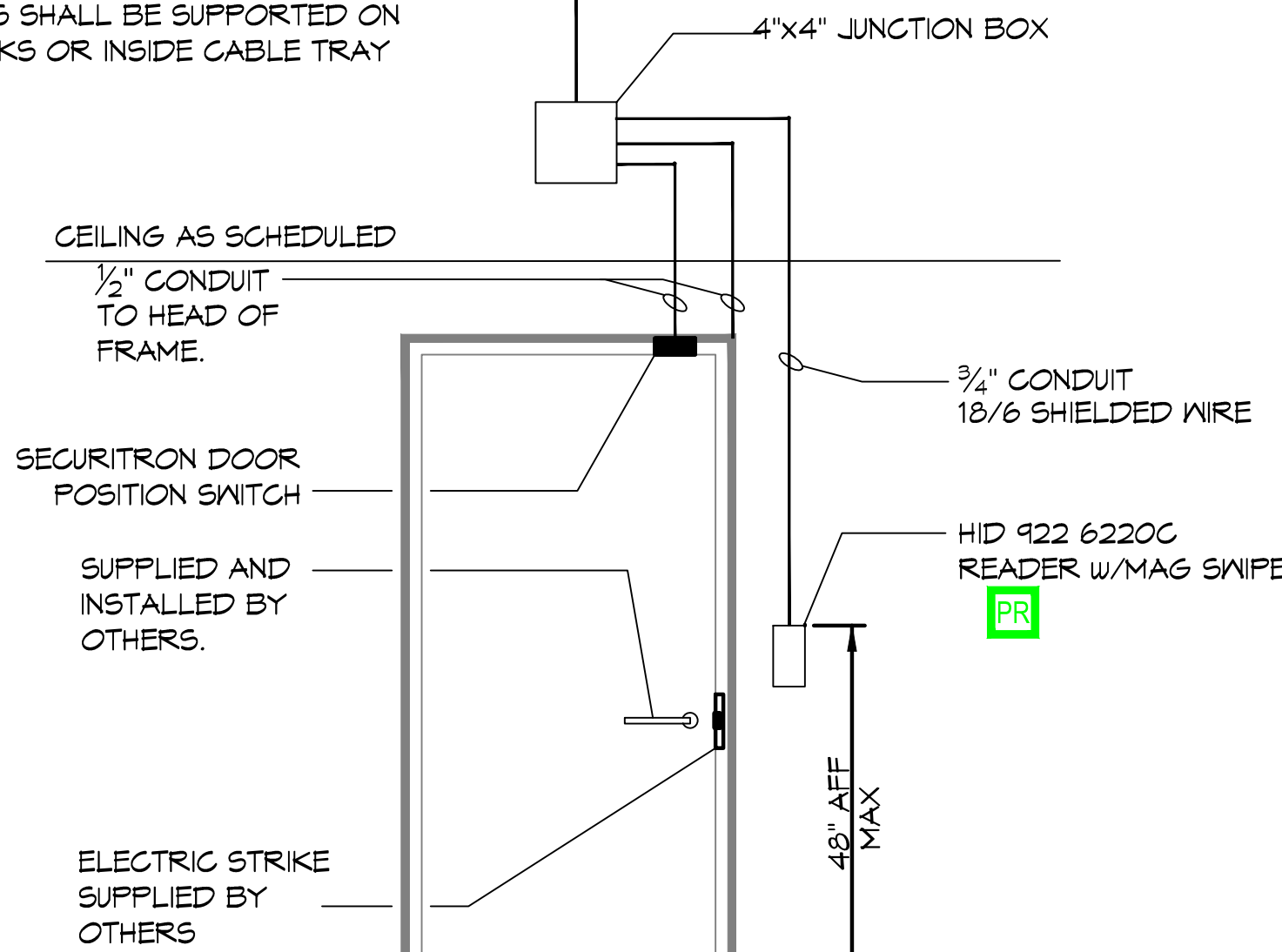
TO DATA ROOM 202:  
ALL CABLES SHALL BE PLENUM RATED. ALL LOOSE/BUNDLED CABLES SHALL BE SUPPORTED ON J-HOOKS OR INSIDE CABLE TRAY

NOTE: PROVIDE FIRE SAFING IN CONDUITS PENETRATING FIRE RATED ASSEMBLIES.

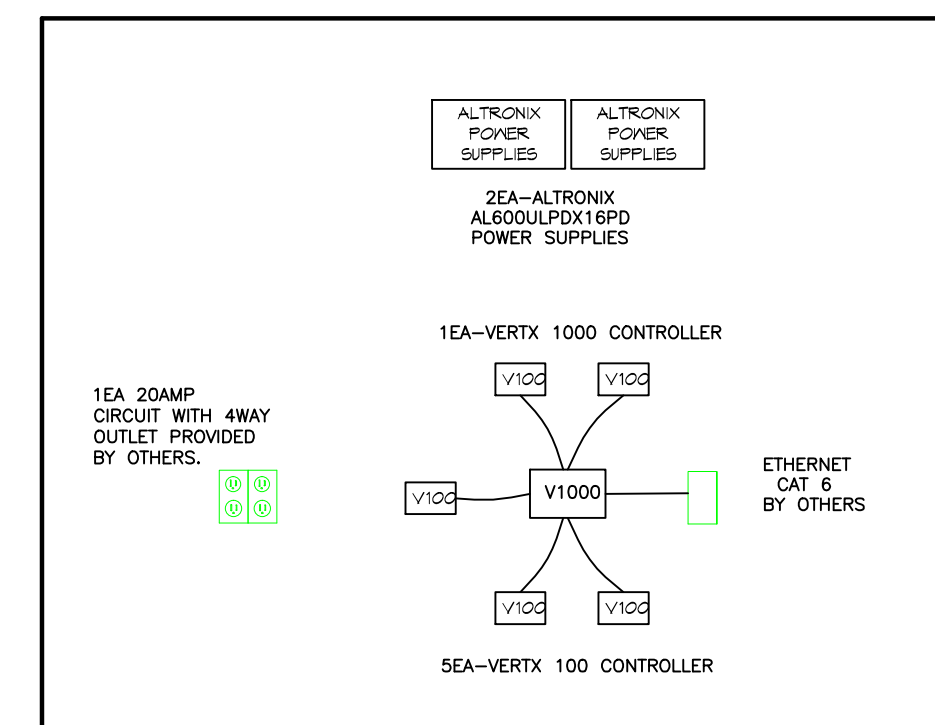
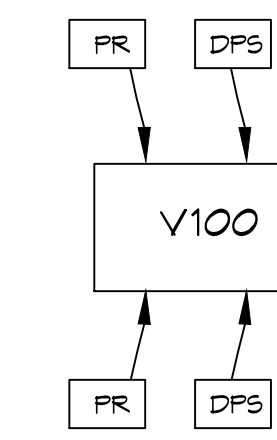
TO DATA ROOM 202:  
ALL CABLES SHALL BE PLENUM RATED. ALL LOOSE/BUNDLED CABLES SHALL BE SUPPORTED ON J-HOOKS OR INSIDE CABLE TRAY



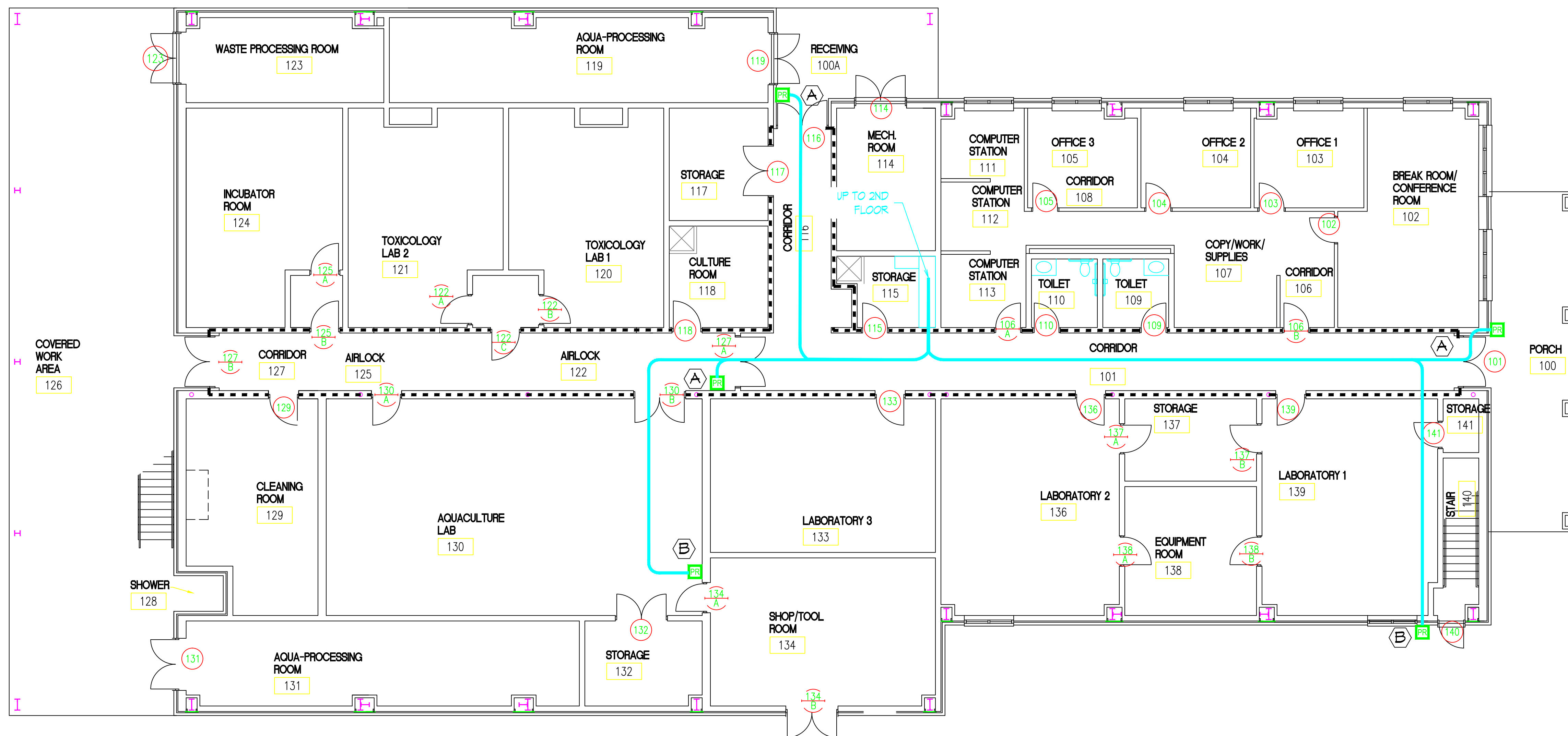
**A) DOUBLE DOOR** DOORS: 100A, 101, 127A, 201



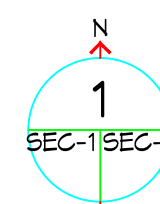
**B) SINGLE DOOR** DOORS: 134A, 140, 202



**DATA RM 202**



SCALE IN FEET



**1st FLOOR ACCESS CONTROL PLAN**

SCALE: 1/8" = 1'-0"

ACCESS CONTROL SYMBOL LEGEND

- PR = HID READER
- = CABLING
- = SMOKE WALL

**DAMMON ENGINEERING, INC.**

554 Old Spanish Trail, Suite 101, Metairie, LA 70002  
 (504) 885-6032  
 www.dammonengineering.com  
 info@dammonengineering.com  
 PH: 985.649.8832

Chief Engineer: Brian Misch, PE  
 554 Old Spanish Trail  
 Suite 101, LA 70002

REVISIONS	DATE
# DESCRIPTION	

SEAL:

**ACCESS CONTROL**

**THE UNIVERSITY OF**

**SOUTHERN MISSISSIPPI**

GULF COAST RESEARCH LABORATORY  
 CEDAR POINT SITE  
 OCEAN SPRINGS, MISSISSIPPI

JOB No: \_\_\_\_\_ DATE: 8/9/2016 CHECKED BY: \_\_\_\_\_  
 DRAWN BY: \_\_\_\_\_

SHEET TITLE:  
**1st FLOOR ACCESS CONTROL PLAN**

DRAWING NUMBER:  
**SEC-1**

SHEET No: 1 of 2