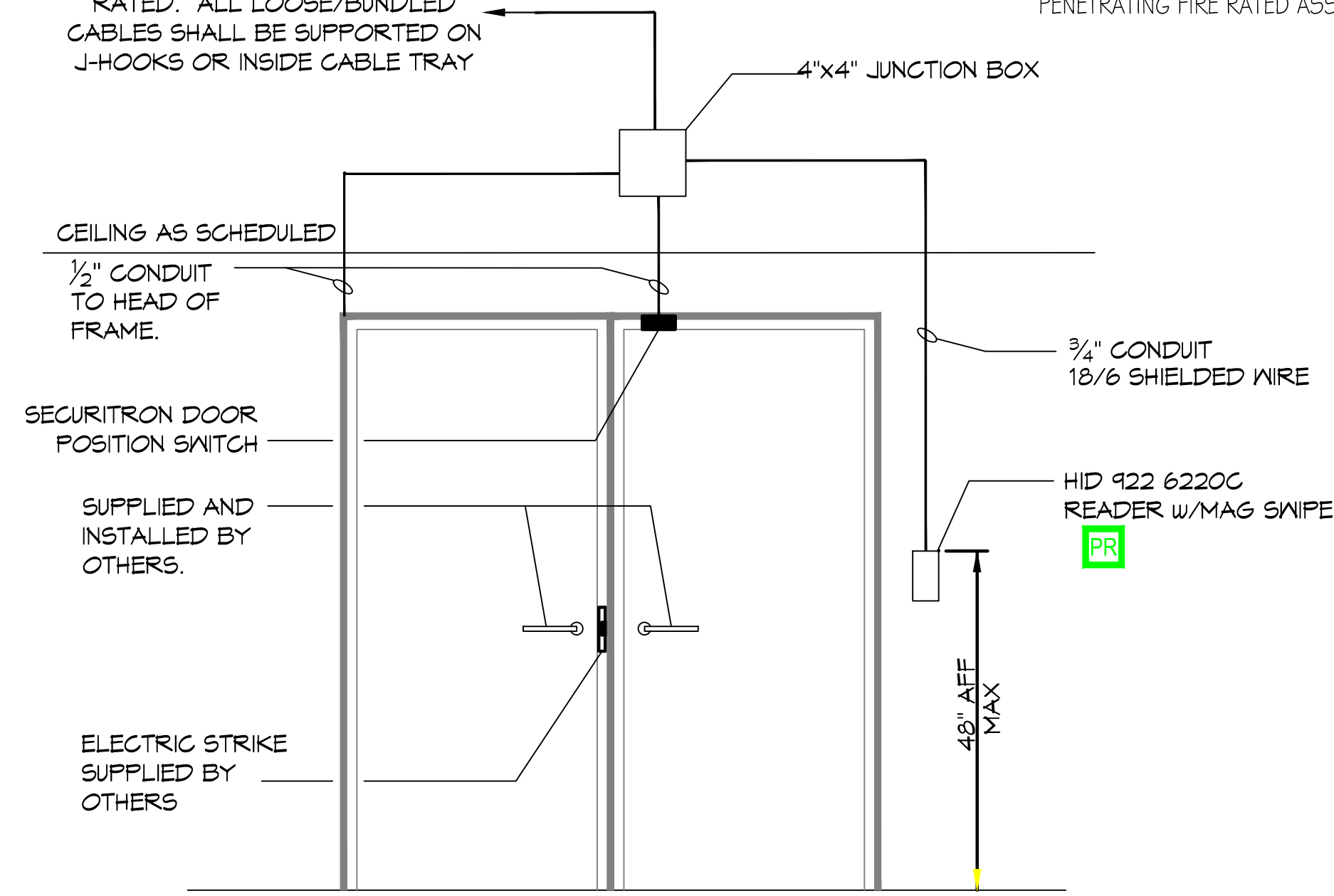


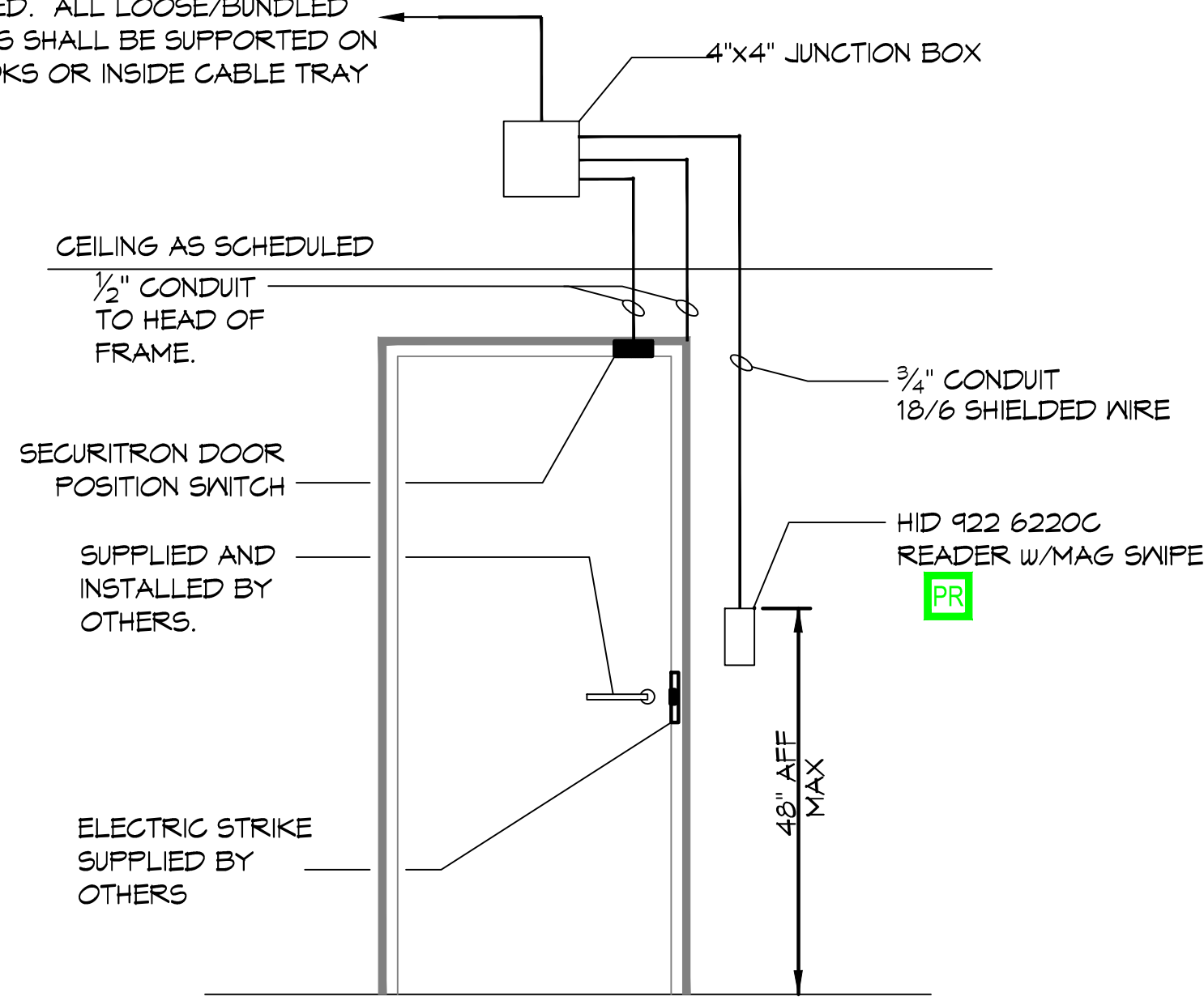
TO DATA ROOM 202:
ALL CABLES SHALL BE PLENUM RATED. ALL LOOSE/BUNDLED CABLES SHALL BE SUPPORTED ON J-HOOKS OR INSIDE CABLE TRAY

NOTE: PROVIDE FIRE SAFING IN CONDUITS PENETRATING FIRE RATED ASSEMBLIES.

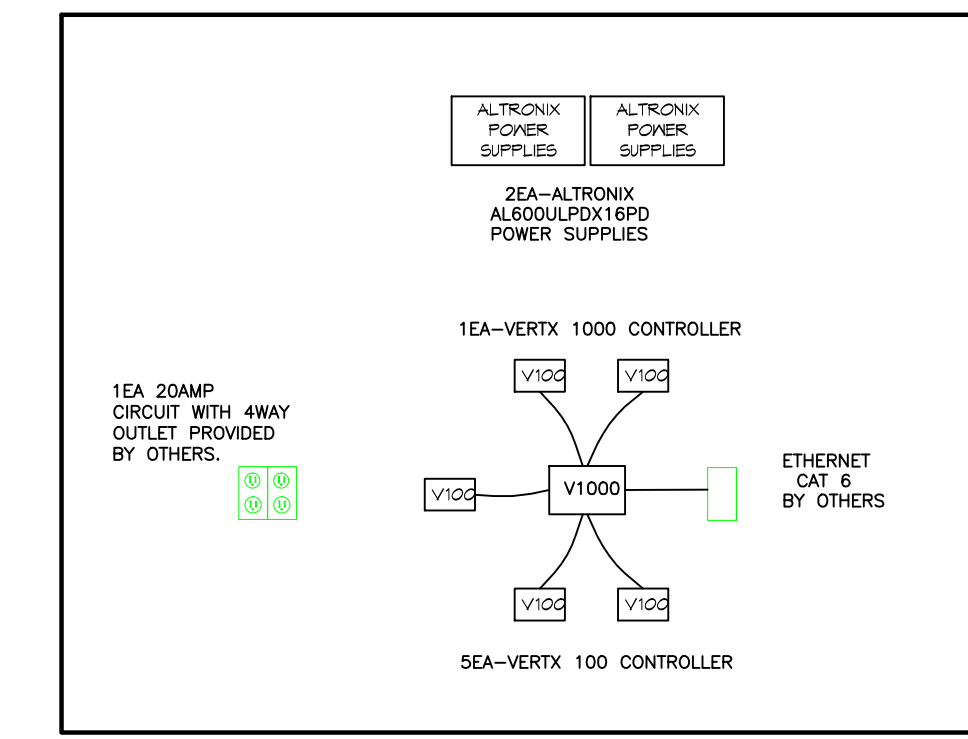
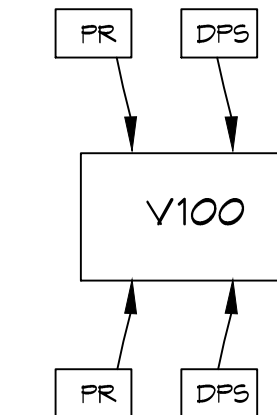
TO DATA ROOM 202:
ALL CABLES SHALL BE PLENUM RATED. ALL LOOSE/BUNDLED CABLES SHALL BE SUPPORTED ON J-HOOKS OR INSIDE CABLE TRAY



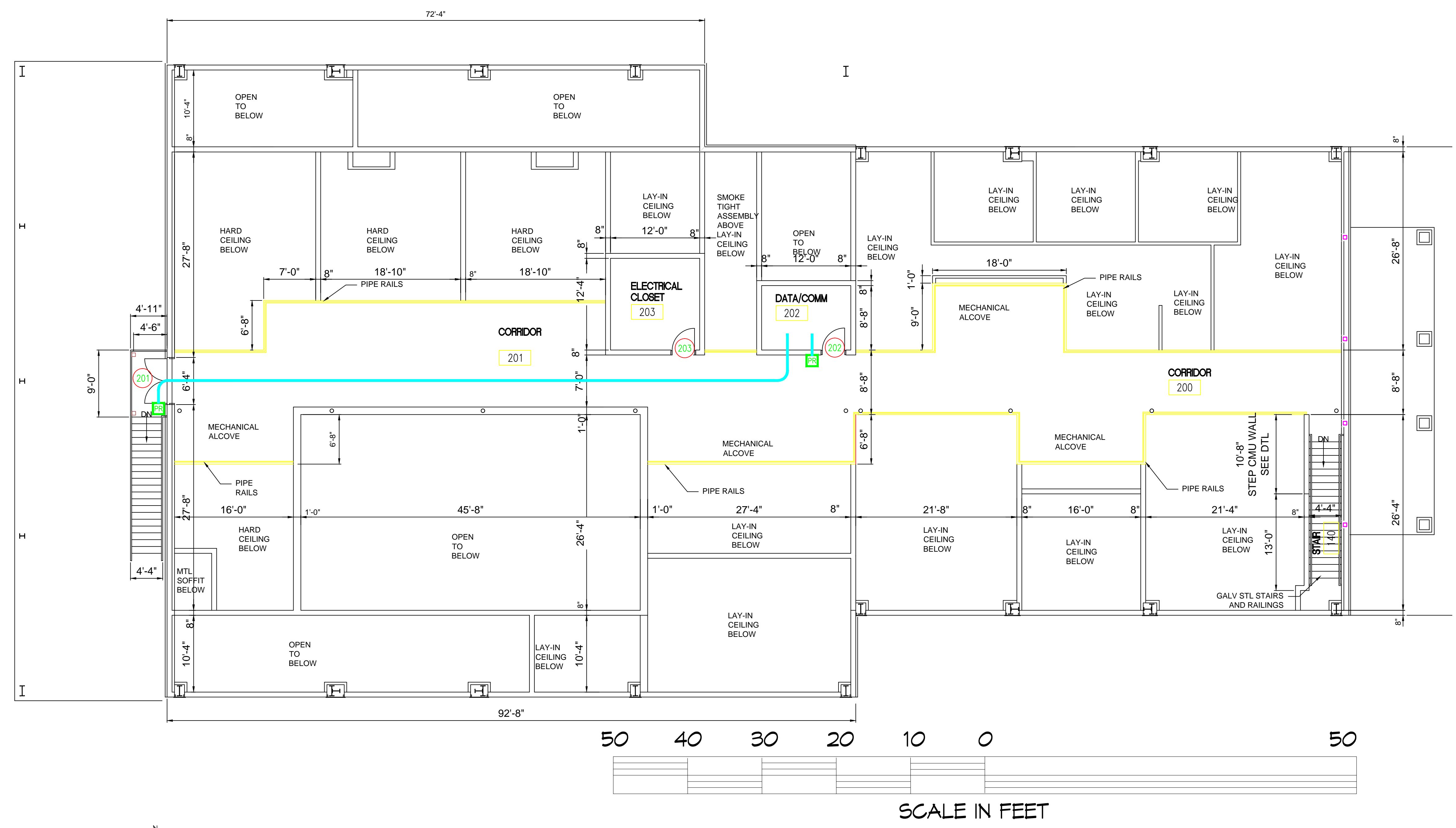
A DOUBLE DOOR DOORS: 100A, 101, 127A, 201



B SINGLE DOOR DOORS: 134A, 140, 202



DATA RM 202



MEZZANINE ACCESS CONTROL PLAN
SCALE: 1/8" = 1'-0"

ACCESS CONTROL SYMBOL LEGEND

- PR = HID READER
- = CABLING
- = SMOKE WALL

DAMMON ENGINEERING, INC.
554 Old Spanish Trail
Slidell, LA 70458
Phone: 985.649.5832

Chief Engineer: Brian Mistich, PE

#	DESCRIPTION	DATE

REVISIONS

SEAL:

ACCESS CONTROL
SOUTHERN UNIVERSITY OF MISSISSIPPI

GULF COAST RESEARCH LABORATORY
CEDAR POINT SITE
OCEAN SPRINGS, MISSISSIPPI

JOB No: 2/19/2016
DATE: 8/19/2016
DRAWN BY: [Signature]
CHECKED BY: [Signature]

SHEET TITLE:
MEZZANINE ACCESS CONTROL PLAN

DRAWING NUMBER:
SEC-1M

SHEET No: 2 of 2