

JOB NO  
5844108

MODEL NUMBER  
SC-11110MA  
JOB NAME  
Sixth Baptist Church

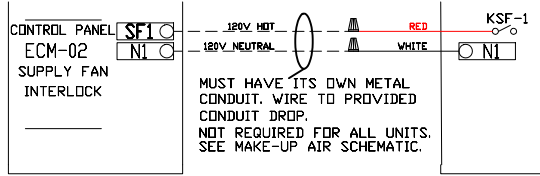
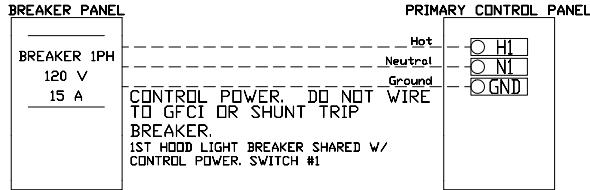
DRAWN BY  
INSTALL  
DATE  
2/6/2023  
DWG NO  
ECP #1-1

DESCRIPTION OF OPERATION:  
120V 1 Phase w/ control for 1 Exhaust Fan, 1 Supply Fan, Exhaust on in Fire, Lights out in Fire, Relay On/Off with Supply Fan, Fans On/Off Thermostatically Controlled, Room temperature sensor shipped loose for field installation.

### BREAKER PANEL TO PRIMARY CONTROL PANEL

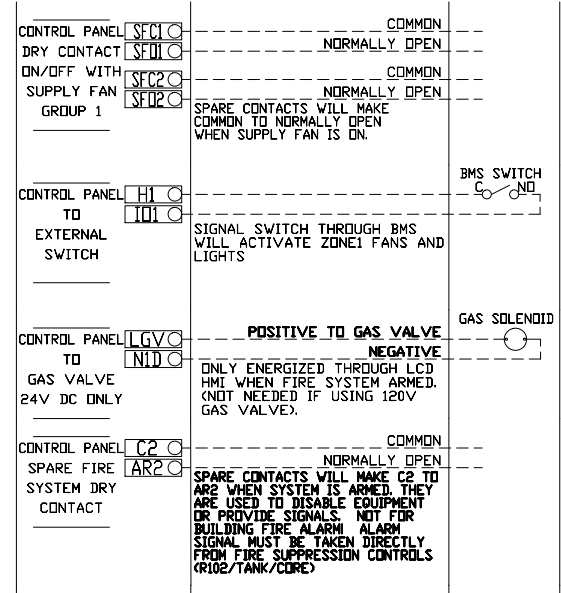
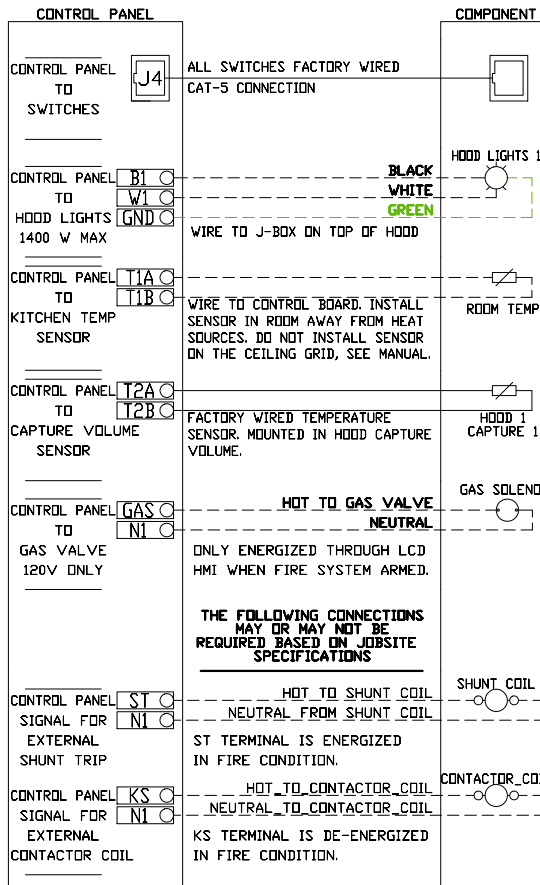
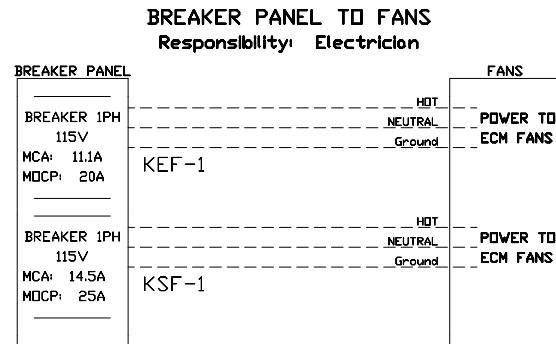
Responsibility: Electrician

BREAKER SIZE SHOWN IS THE MAXIMUM ALLOWED



### CONTROL PANEL TO ACCESSORY ITEMS

Responsibility: Electrician



### CONTROL PANEL TO FIRE SYSTEM

Responsibility: ALARM CONTRACTOR

