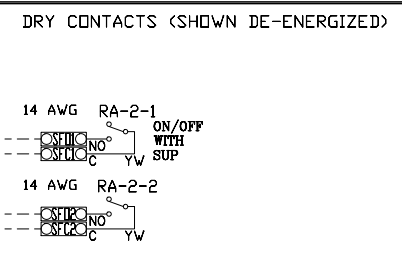
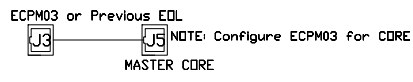
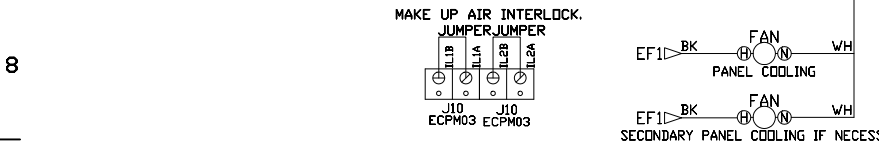
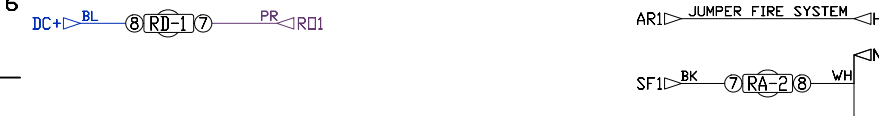
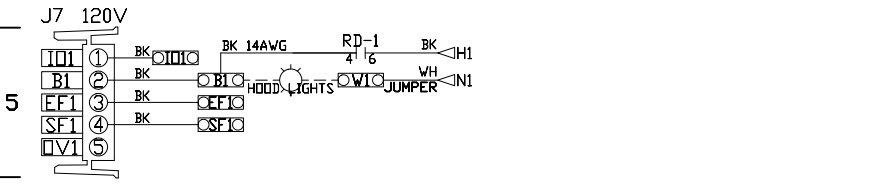
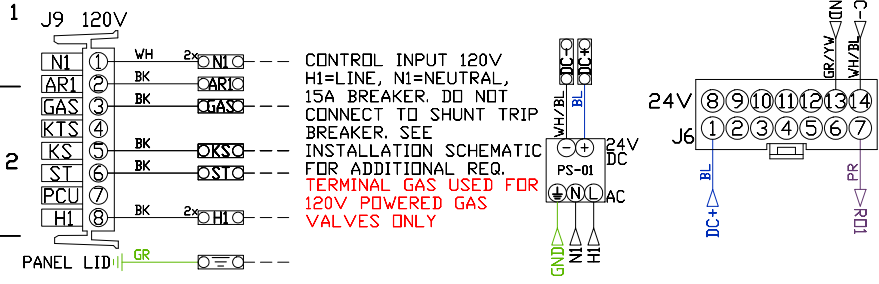


UNLESS SPECIFIED OTHERWISE, ALL FACTORY AC WIRING 16 AWG. ALL FACTORY DC WIRING 18 AWG.



N/A	N/A
66.6%	71.6%
PEB(-)	PEA(+)
P1B(-)	P1A(+)

FACTORY WIRING SCHEMATIC CIRCUIT BOARDS
DCV Rev. 2.14.00
HMI Rev. 2.14.00

RA-x	RD-x
120 VAC	24 VDC
RELAY	RELAY
NO 4 3	NO 4 3
NC 2 1	NC 2 1
COIL 8 7	COIL 8 7
COM 6 5	COM 6 5

COMPONENT LIST

LABEL	DESCRIPTION
ST-X	Starter varies
DL-X	Overload varies
C-X	Contactor varies
PS-1	Power Sup. 24VDC MDP18-24A-1C
RA-x	120V Relay DPDT 241100184.0
RD-x	24VDC Light Relay 241100185.0
TS-x	Duct Thermostat A/CP-P0-T4-EXPL

LEGEND

--- FIELD WIRING
--- FACTORY WIRING

BK- BLACK YW- YELLOW
BL- BLUE CY- GREY
BR- BROWN PR- PURPLE
OR- ORANGE RD- RED
WH- WHITE GR- GREEN
DR/BL- DR/BL STRIPE
BL/RD- BL/RD STRIPE
RD/GN- RD/GN STRIPE
WH/BL- WH/BL STRIPE

JOB NAME
Sixth Baptist Ch...

DRAWING TITLE
SC-111110MA

DESCRIPTION OF OPERATION
120V 1 Phase w/ control for 1 Exhaust Fan, 1 Supply Fan, Exhaust on in Fire, Lights out in Fire, Relay On/Off with Supply Fan, Fans On/Off Thermostatically Controlled. Room temperature sensor shipped loose for field installation.

JOB NO	DRAWN BY
5844108	
TYPE	DATE
FACTORY	2/6/2023
DWG NO ECP	#1-6