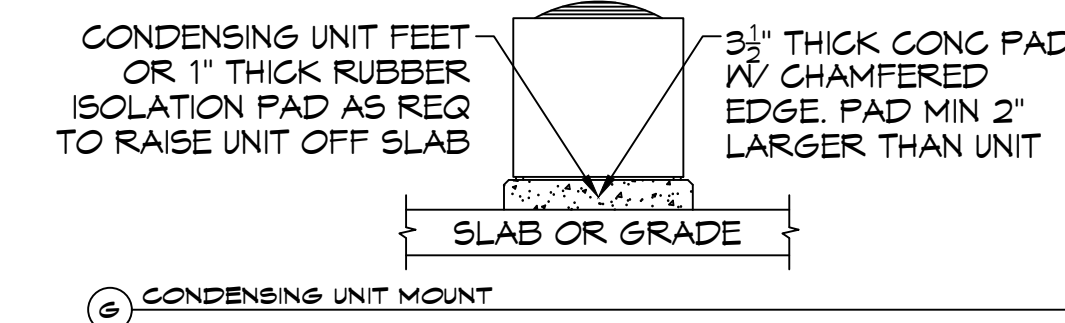
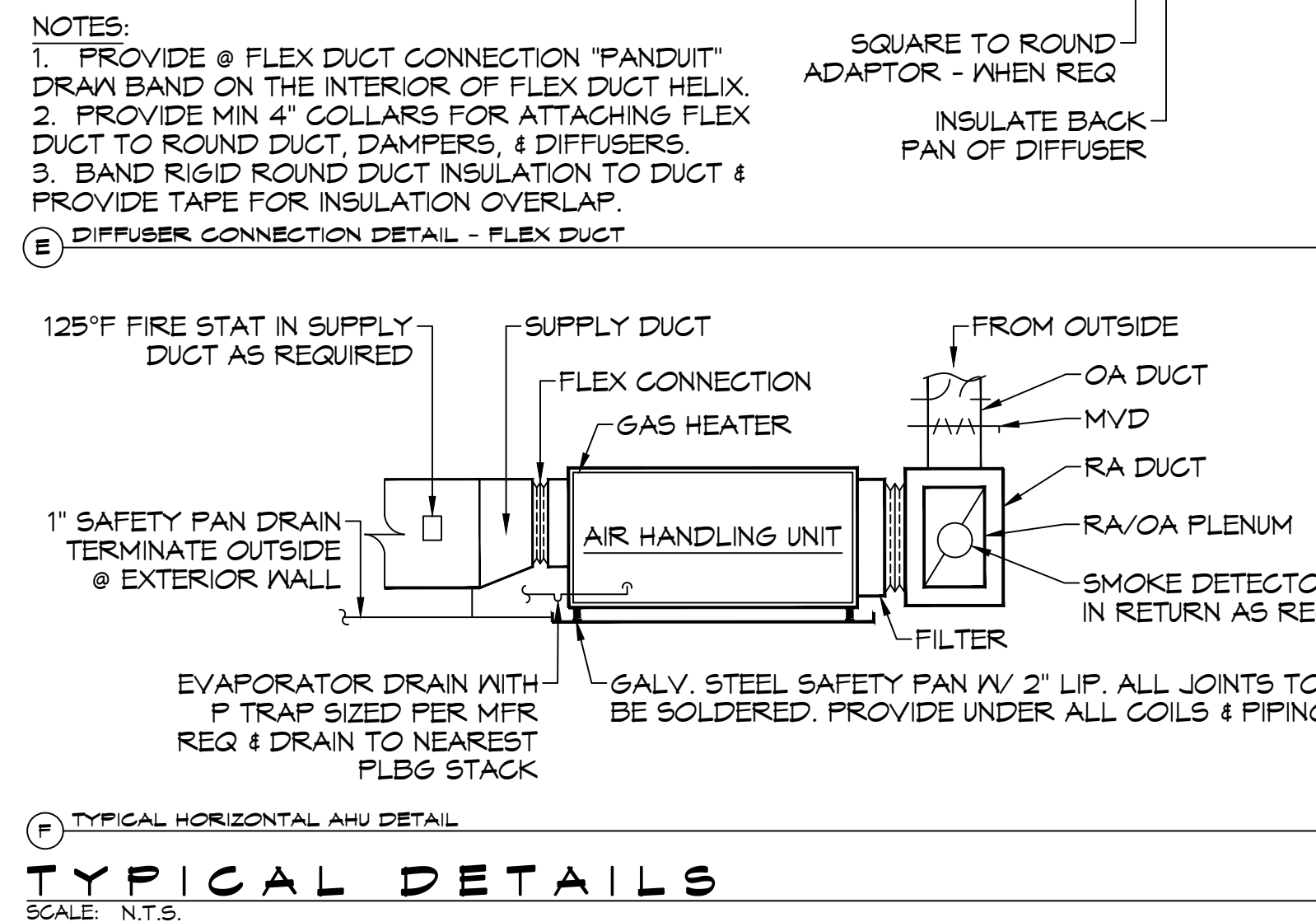


DRAWN DIAGRAMMATICALLY FOR CLARITY. FIELD VERIFY PLACEMENT OF ALL EQUIPMENT

**MECHANICAL LEGEND**

	SUPPLY AIR GRILLE		EXHAUST FAN
	RETURN AIR GRILLE		EXHAUST MOTOR
	DAMPER CONTROL		THERMOSTAT
	SUPPLY DUCT		FIRE DAMPENERS
	RETURN AIR DUCT		
	EXHAUST DUCT		
	RATED WALL		

ROUND FLEX DUCT, MAX. LENGTH 12'-0", MIN. R-6 DUCT SIZE AS FOLLOWS:  
 250 CFM TO 350 CFM = 9"  
 200 CFM TO 250 CFM = 8"  
 150 CFM TO 200 CFM = 7"  
 100 CFM TO 150 CFM = 6"



**TYPICAL DETAILS**  
SCALE: N.T.S.

**EXHAUST FAN SCHEDULE**

TAG	FAN			POWER			MAKE / MODEL	REMARKS	
	AIRFLOW (CFM)	TSP ("wc)	AMPS	WATTS	VAC	PH			HZ
EF-1	150	0.1		42.8	120	1	60	Broan QTXE Series 150	1, 2
EF-2	70	0.2	0.4		120	1	60	Broan A80	1, 2

1. Install per manufacturer's recommendations
2. Interlock with light switch

**SPLIT SYSTEM SCHEDULE**

Tag	Area Served	Tons (Nominal)	Total CFM	O/A (CFM)	Make	Position	DX Coil	Furnace	Cooling				Motor HP	Power			CONDENSER				Remarks	
									TMB H	EDB	EWB	MBH		VAC	PH	Tag	Make	Model	VAC	PH		MCA
									AHU-2	Second Floor	2	1020		70	Goodman	Horizontal	CHPT1824	GMBC92030	19.8	77.8		68.3
AHU-3	First Floor	2-1/2	1080	90	Goodman	Upflow	CAPT3137	GMBC92030	26.6	78.6	66.6	30	1/2	208	1	CU-3	Goodman	GXS130301	208	1	16.7	1, 2, 3, 4
AHU-4	Vestibule	3	1110	300	Goodman	Horizontal	CHPT3742	GMBC92040	34.4	80.5	71.7	40	1/2	208	1	CU-4	Goodman	GXS130361	208	1	18.8	1, 2, 3, 4
AHU-5	Multi-purpose Room	5	1480	290	Goodman	Horizontal	CHPT4960	GMBC92040	51.3	81.3	68.7	40	1/2	208	1	CU-5	Goodman	GXS130601	208	1	32.5	1, 2, 3, 4

- NOTES:
1. Provide inlet filter box, single point power connection, expansion valve, crankcase heat, time delay relay, condensate overflow switch & programmable 7/24 thermostat with lockable cover.
  2. Cooling capacities to be rated in accordance with AHRI standard 210/290 for ASHRAE standard design weather conditions in New Orleans, LA.
  3. Install units in accordance with manufacturer's recommendations.
  4. Provide new filters after commissioning and final acceptance.

**DIFFUSER SCHEDULE**

Mark No.	Service	Neck Size	Description
A	Supply Air	Ref. Plan	Price 620D Register, Double Deflection w/ Damper
B	Supply Air	Ref. Plan	Four Slot Liner Slot Diffuser (48" x 1"), Price SDS w/ SDA Plenum
C	Supply Air	Ref. Plan	12" x 12" Adjustable Square Cone Diffuser, Price ASCDA w/ Insulated Back Panel
D	Supply Air	Ref. Plan	24" x 24" Adjustable Square Cone Diffuser, Price ASCDA w/ Insulated Back Panel
E	Return Air	Ref. Plan	12" x 12" Perforated, Ducted Return w/ Damper, Titus PAR
F	Return Air	Ref. Plan	24" x 24" Perforated, Ducted Return w/ Damper, Titus PAR
G	Return Air	Ref. Plan	Price 610ZD Louverted Return w/ Damper

1. Coordinate with Architect / Owner for colors and finish.

**MODULAR A/C SCHEDULE - SIXTH WARD**

Tag	Area Served	Make (or equiv)	Model / Size (or equiv.)	Total CFM	OA CFM	External SP ("WC)	FAN HP (Max)	POWER			COOLING			FILTERS	GAS HEAT (MBH)	TAG	Make (or equiv)	Model / Size (OR EQUIV.)	POWER			MCA	Remarks
								VAC	PH	Hz	TMB H	EDB	EWB						VAC	PH	Hz		
								AHU-1	Worship	Trane	CSAA-12	7680	1280						0.4	5	208		

NOTES:

1. Trane CSAA horizontal modular air handling unit with front loading 2" x MERV 8 filters, inshot fully modulating natural gas (NG) heater, direct expansion (DX) coil, vertical upblast fan housing and single point power connection. All control devices shall.
2. Trane RAU series single circuit air cooled condenser with scroll compressor, hot gas bypass, refrigerant and single point power connection. All control devices shall be provided to accommodate integration with a 24VAC thermostat.
3. Provide condensate overflow switch, refrigerant tubing, MERV 8 filters, smoke detector and programmable 7/24 24 VAC thermostat with lockable cover.
4. Cooling capacities to be in accordance with AHRI standard 210/290 for ASHRAE standard design weather conditions in New Orleans, LA.
5. Install units in accordance with manufacturer's recommendations.
6. Provide new filters after commissioning and final acceptance.

**SCHEDULES**  
SCALE: N.T.S.

**DAMMON ENGINEERING, INC.**  
LOUISIANA & MISSISSIPPI  
www.dammonengineering.com  
info@dammonengineering.com  
554 Old Spanish Trail  
Slidell, LA 70458  
PH: 985.649.5832 F: 985.641.5590  
Chief Engineer: Brian Mistich, PE

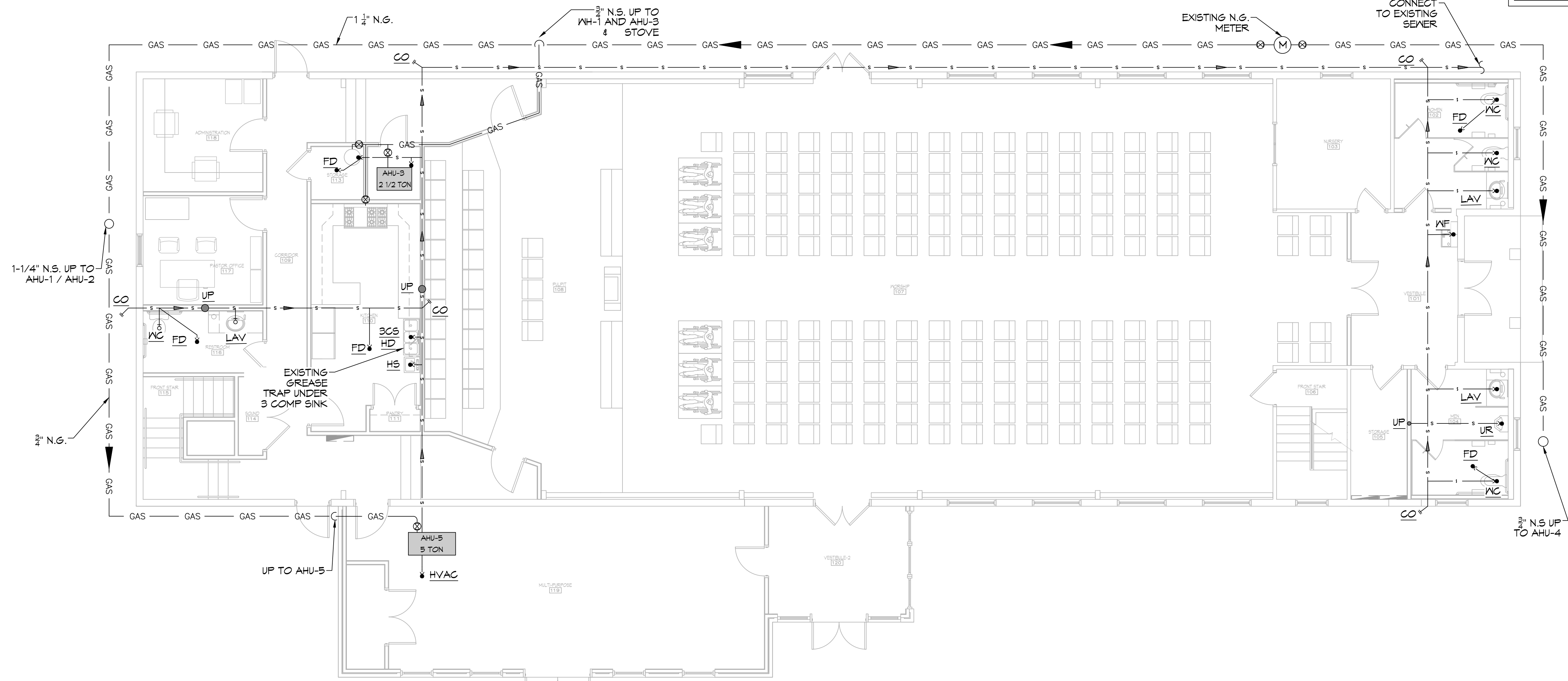
#	DESCRIPTION	DATE

420 FELICITY STREET  
NEW ORLEANS LA 70190  
JOB No: 2470 DATE: 02-06-2023  
DRAWN BY: CKD CHECKED BY: BAK

**S U S T A I N A B L E**  
**S T R U C T U R E**

SHEET TITLE:  
MECHANICAL PLAN  
GROUND FLOOR  
DRAWING NUMBER:  
**M103**  
SHEET No: 13 of 10

FILE NAME: J:\1 - CHURCH\24103 - Sun Baptist Church (RdH) (Sheet)\Sheet\General\0111 - Sewer and Gas Plumbing Plan.dwg PLOT DATE: 02/06/2023 02:04:45



**5 SEWER & GAS PLUMBING PLAN**  
SCALE: 3/16"=1'-0"

FIRST FLOOR



**6 SEWER & GAS PLUMBING PLAN**  
SCALE: 3/16"=1'-0"

SECOND FLOOR

ALL PLUMBING LINES ARE DRAWN DIAGRAMMATICALLY FOR CLARITY.

**DAMMON**  
**ENGINEERING, INC.**  
 LOUISIANA & MISSISSIPPI

Chief Engineer: Brian Mistich, PE  
 554 Old Spanish Trail  
 Slidell, LA 70458  
 www.dammonengineering.com  
 info@dammonengineering.com  
 PH: 985.649.5832 F: 985.641.5950

#	DESCRIPTION	REVISIONS	DATE

--

**SIXTH BAPTIST**  
**CHURCH**

420 FELICITY STREET  
 NEW ORLEANS LA 70130  
 JOB No: 24103 DATE: 02-06-2023  
 DRAWN BY: CKD CHECKED BY: BAK

SHEET TITLE:  
 SEWER AND GAS  
 PLUMBING PLAN -  
 FIRST FLOOR, SECOND  
 FLOOR AND ATTIC

DRAWING NUMBER:  
**P101**

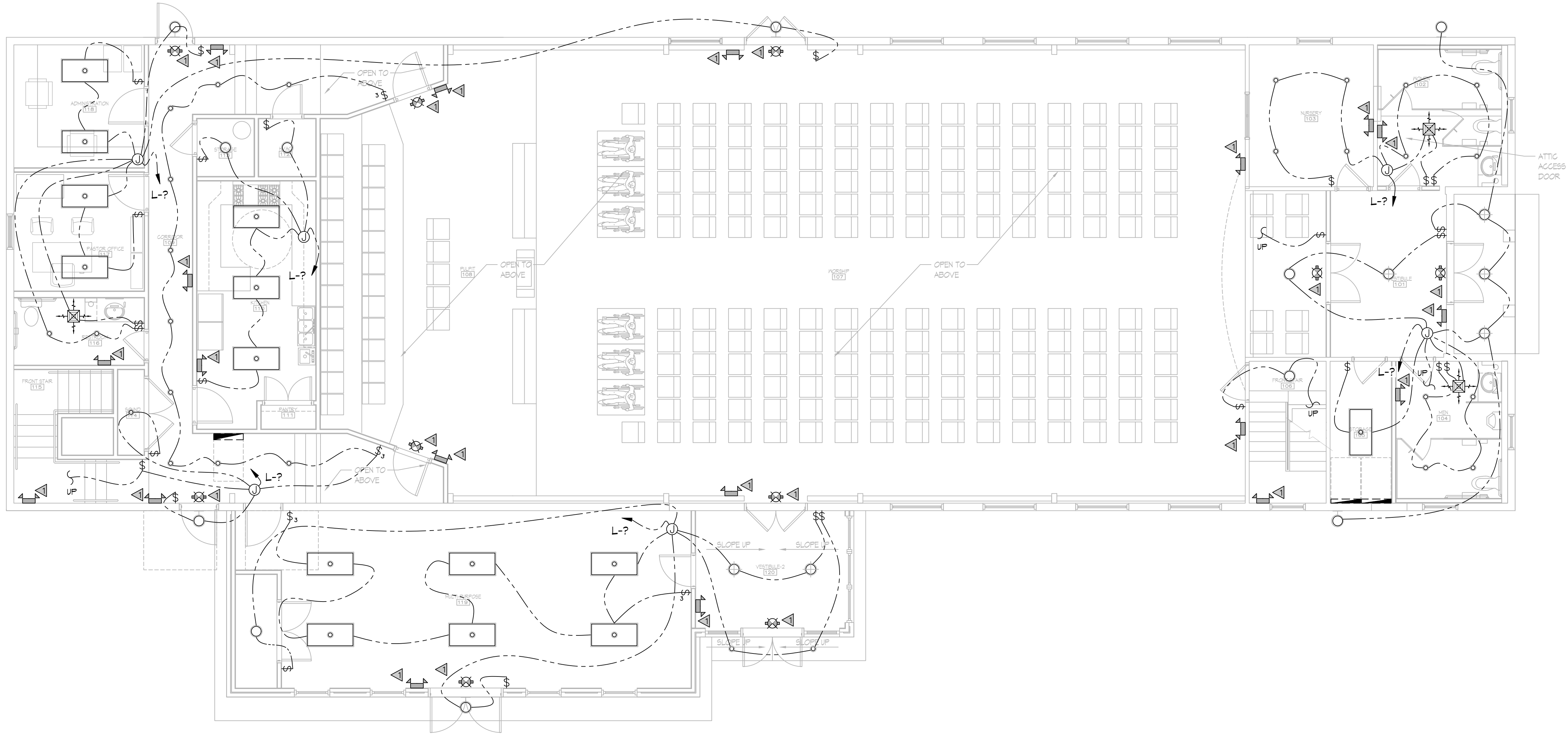








FILE NAME: A:\\_CAD\2023\103 - 5th Baptist Church, 4th Floor, 2nd Floor, 3rd Floor, 4th Floor, 5th Floor, 6th Floor, 7th Floor, 8th Floor, 9th Floor, 10th Floor, 11th Floor, 12th Floor, 13th Floor, 14th Floor, 15th Floor, 16th Floor, 17th Floor, 18th Floor, 19th Floor, 20th Floor, 21st Floor, 22nd Floor, 23rd Floor, 24th Floor, 25th Floor, 26th Floor, 27th Floor, 28th Floor, 29th Floor, 30th Floor, 31st Floor, 32nd Floor, 33rd Floor, 34th Floor, 35th Floor, 36th Floor, 37th Floor, 38th Floor, 39th Floor, 40th Floor, 41st Floor, 42nd Floor, 43rd Floor, 44th Floor, 45th Floor, 46th Floor, 47th Floor, 48th Floor, 49th Floor, 50th Floor, 51st Floor, 52nd Floor, 53rd Floor, 54th Floor, 55th Floor, 56th Floor, 57th Floor, 58th Floor, 59th Floor, 60th Floor, 61st Floor, 62nd Floor, 63rd Floor, 64th Floor, 65th Floor, 66th Floor, 67th Floor, 68th Floor, 69th Floor, 70th Floor, 71st Floor, 72nd Floor, 73rd Floor, 74th Floor, 75th Floor, 76th Floor, 77th Floor, 78th Floor, 79th Floor, 80th Floor, 81st Floor, 82nd Floor, 83rd Floor, 84th Floor, 85th Floor, 86th Floor, 87th Floor, 88th Floor, 89th Floor, 90th Floor, 91st Floor, 92nd Floor, 93rd Floor, 94th Floor, 95th Floor, 96th Floor, 97th Floor, 98th Floor, 99th Floor, 100th Floor



**15 LIGHTING PLAN**  
SCALE: 3/16"=1'-0"

FIRST FLOOR

**GENERAL LIGHTING NOTES**

1. ALL WORK SHALL COMPLY WITH APPLICABLE NATIONAL, STATE, AND LOCAL CODES, RULES, REGULATIONS, AND REQUIREMENTS OF THE SERVICE UTILITY COMPANY.
2. REFER TO ARCHITECTURAL DRAWINGS FOR EXACT LOCATION AND MOUNTING INSTRUCTIONS FOR ALL LIGHT FIXTURES. NOTIFY THE ARCHITECT AND ENGINEER OF ANY DISCREPANCIES BETWEEN THESE PLANS AND THE ARCHITECTURAL PLANS RELATING TO QUANTITY, TYPE AND LOCATION OF DEVICES AND/OR FIXTURES.
3. WHEN SPECIFIC LIGHT FIXTURE HAS BEEN SPECIFIED IN THE FIXTURE SCHEDULE, ELECTRICAL SHALL PROVIDE COMPLETE ASSEMBLY INCLUSIVE ALL PARTS AND HARDWARE TO INSURE PROPER FUNCTIONING FIXTURE.
4. ALL CONDUCTORS SHALL BE #12 AWG UNLESS NOTED OTHERWISE.
5. ALL 120V RUNS LONGER THAN 60 FEET SHALL BE #10 AWG AND 277V RUNS LONGER THAN 150 FEET SHALL BE #10 AWG UNLESS NOTED OTHERWISE.
6. ALL CONDUCTORS SHALL BE COPPER.
7. WHERE CONDUCTOR SIZES ARE NOTED ON DRAWINGS, THAT WIRE SIZE SHALL BE THROUGH THE ENTIRE RUN UNLESS OTHERWISE NOTED.
8. MOUNTED LIGHT SWITCHES 48" AFF UNLESS NOTED OTHERWISE ON ARCHITECTURAL DRAWINGS.
9. ALL GANGED SWITCHES SHALL HAVE A COMMON SEAMLESS FACEPLATE. EACH MULTI-GANGED BOX SHALL BE NO MORE THAN SIX (6) SWITCHES WIDE. WHERE MORE THAN SIX (6) SWITCHES ARE SHOWN AT ONE (1) LOCATION, ADDITIONAL MULTI-GANGED BOXES SHALL BE STACKED VERTICALLY AND THE WIDTH OF THE MULTI-GANGS SHALL BE AS EVEN AS POSSIBLE.
10. EACH DIMMER SWITCH SHALL HAVE A WATTING RATING 25% HIGHER THAN THE TOTAL WATTAGE OF ALL LIGHTS TO BE CONTROLLED BY THE DIMMER. DIMMER SIZES 600, 1000, 1500, AND 2000 WATTS, LUTRON NOVA T-STAR. WHERE SWITCHES ARE GANGED WITH DIMMERS, THE SWITCHES SHALL ALSO BE LUTRON NOVA T-STAR, FLUORESCENT AND LOW VOLTAGE DIMMERS HAL LBE LUTRON NOVA T-STAR.
11. WHERE FLUORESCENT FIXTURES ARE SHOWN TO BE DIMMED, THE FIXTURES SHALL HAVE DIMMING TYPE BALLASTS WHICH ARE COMPATIBLE WITH THE SPECIFIED DIMMERS.
12. WHERE LED FIXTURES/LAMPS ARE SHOWN TO BE DIMMED, THE DIMMER SHALL BE COMPATIBLE WITH THE FIXTURE/LAMP SPECIFIED OR PROVIDED.
13. ALL EMERGENCY LIGHT FIXTURES SHALL HAVE 90 MINUTE BATTERY BACKUP WITH INTEGRAL TEST BUTTON AND SHALL BURN CONTINUOUSLY.
14. ALL FLUORESCENT FIXTURES THAT UTILIZE DOUBLE-ENDED LAMPS AND CONTAIN BALLASTS SHALL BE PROVIDED WITH A DISCONNECTING MEANS IN ACCORDANCE WITH NEC 410.736.

**DAMMON ENGINEERING, INC.**  
 LOUISIANA & MISSISSIPPI  
 Chief Engineer: Brian Misch, PE  
 554 Old Spanish Trail  
 Slidell, LA 70458  
 www.dammonengineering.com  
 info@dammonengineering.com  
 PH: 985.649.5832 F: 985.641.5950

#	DESCRIPTION	DATE

**SIXTH BAPTIST CHURCH**  
 420 FELICITY STREET  
 NEW ORLEANS LA 70150  
 JOB No: 2470 DATE: 02-06-2023  
 DRAWN BY: CKD CHECKED BY: BAK

SHEET TITLE:  
**POWER PLAN-  
FIRST FLOOR**

DRAWING NUMBER:  
**E103**

