

CROSS GATES FAMILY FITNESS

200 N MILITARY ROAD,
SLIDELL, LOUISIANA 70461

INTERIOR FITOUT

ISSUED FOR DESIGN DEVELOPMENT



Project
CROSS GATES FAMILY FITNESS
200 N MILITARY ROAD,
SLIDELL, LA 70461

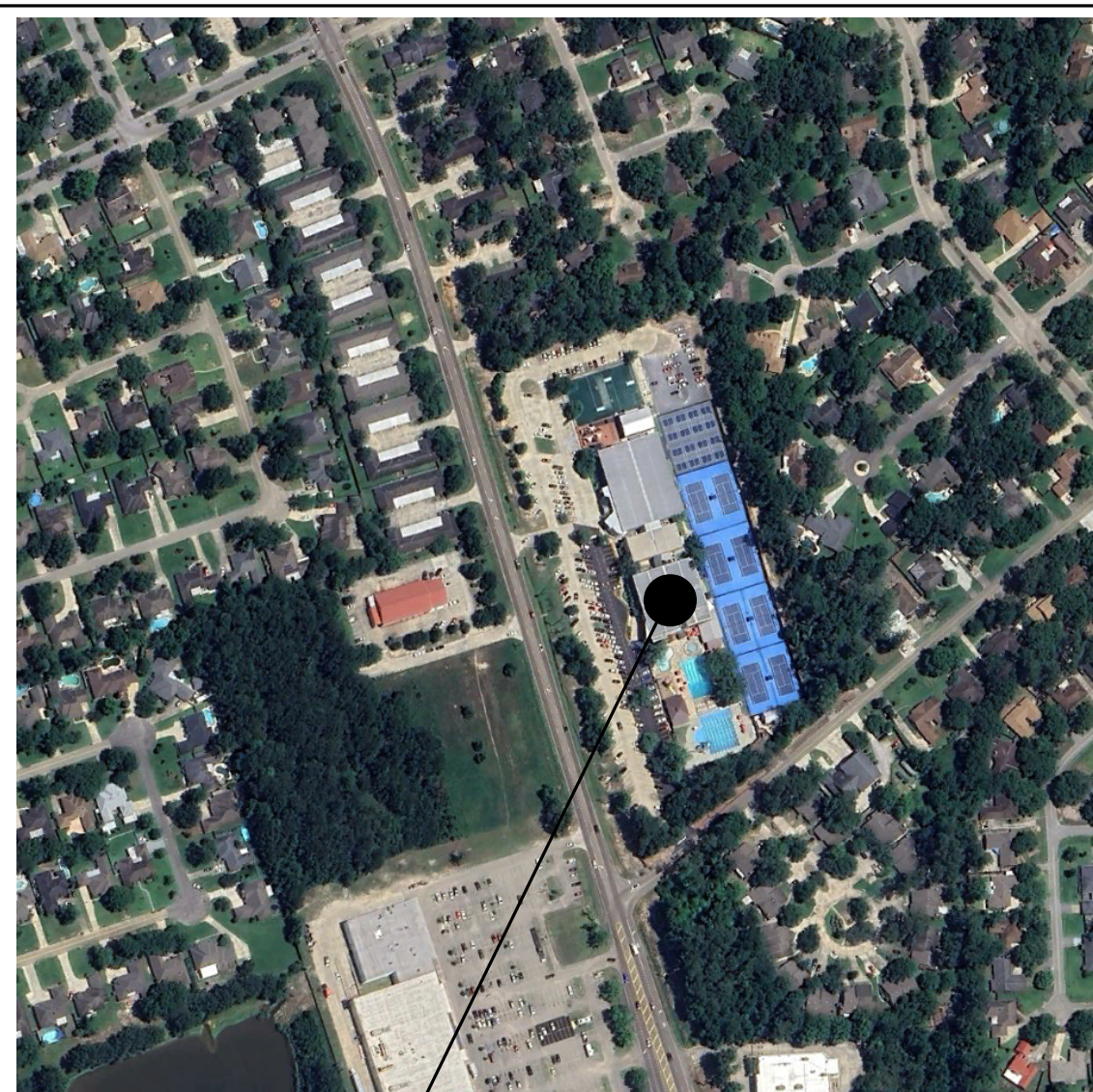
Project No:
24-03-01



FABIANO DESIGNS INTERNATIONAL
6 SOUTH FULLERTON AVENUE
MONTCLAIR, NJ 07042 USA
973-746-5100
WWW.FABIANODESIGNS.COM

Copyright © 2024 - FABIANO DESIGNS
No Reselling Or Reproductions Without
Written Permission from FABIANO DESIGNS

VICINITY MAP



SITE



SHEET LIST

SHEET NUMBER	SHEET NAME	XX-XX-2024 ISSUED FOR DESIGN DEVELOPMENT	XX-XX-2024 ISSUED FOR
00 COVER			
T100	TITLE SHEET	●	
T120	3D RENDERINGS	●	
02 GENERAL PROJECT PARAMETERS			
G070	GENERAL NOTES AND DRAWING ANNOTATIONS	●	
03 SCHEDULES			
A001	PARTITION TYPES & DETAILS	●	
A003	DOOR, FRAME TYPES, DETAILS, HARDWARE SCHEDULE AND GLAZING SCHEDULE	●	
A020	PLUMBING FIXTURE AND TOILET ACCESSORY	●	
04 DEMOLITION			
AD101	DEMOLITION PLAN	●	
AD201	DEMOLITION REFLECTED CEILING PLAN	●	
05 ARCHITECTURAL PLANS			
A110	CONSTRUCTION PLAN	●	
A130	CONSTRUCTION PLAN - KEY NOTES	●	
A201	REFLECTED CEILING PLAN	●	
07 BUILDING SECTIONS AND ELEVATIONS			
A501	INTERIOR ELEVATIONS	●	
A502	INTERIOR ELEVATIONS	●	
A503	INTERIOR ELEVATIONS	●	
08 FINISH SCHEDULE AND PLANS			
A600	FINISH AND MATERIAL SCHEDULE	●	
A601	FINISH PLAN	●	
A670	TRANSITION DETAILS	●	

KEY PLAN



PROFESSIONAL SEAL

SCOPE OF WORK

INTERIOR FIT OUT OF AN EXISTING LOCKER ROOM AND SPA RENOVATION.
SCOPE OF WORK AREA: XXX SF

No. Date Description

11/01/2021 ISSUED FOR DESIGN DEVELOPMENT

DRAWING COORDINATION

ARCHITECTURAL, MECHANICAL, PLUMBING AND ELECTRICAL PLANS MAKE UP THE SET OF CONSTRUCTION DOCUMENTS. ALL PLANS ARE TO BE READ THOROUGHLY WITH ANY COORDINATION ISSUES AND/OR DISCREPANCIES BROUGHT TO THE ATTENTION OF THE ARCHITECT FOR ADDITIONAL COORDINATION AND RESOLUTION.

PROJECT DIRECTORY

OWNER

CROSS GATES FAMILY FITNESS
200 N. MILITARY RD.
SLIDELL, LA 70461
TEL: 985.643.3500
CONTACT: LARRY WELCH
E-MAIL: LARRY@CROSSGATESCLUB.COM

ARCHITECT

FABIANO ARCHITECTS
6 S. FULLERTON AVE.
MONTCLAIR, NJ 07042
TEL: 973.746.5100
CONTACT: YOUNSEO PARK, RA
EMAIL: YOUNSEO@FABIANODESIGNS.COM

MECHANICAL / ELECTRICAL / PLUMBING
TO BE FILED SEPERATELY AS DESIGN/BUILD.

Sheet Title:

TITLE SHEET

ORIGINAL DRAWINGS IS 34X22
DO NOT SCALE CONTENTS OF THIS DRAWINGS

Sheet Number:

T100

Page Number: of

3D RENDERINGS

F

E

D

C

B

A



Project
CROSS GATES FAMILY FITNESS
200 N MILITARY ROAD,
SLIDELL, LA 70461

Project No:
24-03-01

FABIANO

FABIANO DESIGNS INTERNATIONAL
6 SOUTH FULLERTON AVENUE
MONTCLAIR, NJ 07042 USA
973-746-5100
WWW.FABIANODESIGN.COM

Copyright © 2024 - FABIANO DESIGNS
No Reselling Or Reproductions Without
Written Permission from FABIANO DESIGNS

KEY PLAN



PROFESSIONAL SEAL

No. Date Description

11/01/2021 ISSUED FOR DESIGN DEVELOPMENT

Sheet Title:

3D RENDERINGS

ORIGINAL DRAWINGS IS 34X22
DO NOT SCALE CONTENTS OF THIS DRAWINGS

Sheet Number:

T120

Page Number: of

LIGHTING SCHEDULE

MARK	DESCRIPTION	MANUFACTURER	MODEL NO.	LAMP	
F1	2" x 2" SQUARE DOWNLIGHT	SOLAIS	ST2ARM-S*-PW-BDM-PW-FL-9-35-900-UNV2-CT.*	0 - 10V, 1% DIMMING	
F2A	TAPE LIGHT WITH CHANNEL	LUMINII	BA42-SO-35K*-BSC-C-PDCU-W*-24	0 - 10V, 1% DIMMING	ON TOP OF LOCKERS
F2B	TAPE LIGHT WITH CHANNEL	LUMINII	BA42-SO-35K*-BSC-C-PDCU-W*-24	0 - 10V, 1% DIMMING	AT TOE KICK OF LOCKERS
F3	2" X 2" DOWNLIGHT - SHOWERS	SOLAIS	ST2ARM-S*-PW-BDM-PW-NFL-9-35-900-UNV2-CT.*	0 - 10V, 1% DIMMING	
F4	COVE LIGHT-DAMP AREA	CORONET LED	EZ-WW*-35-LOW-UNV-DB-W-COVE-E-WAO.*	-	
F5	BACKLIT MIRROR	-	-	0 - 10V, 1% DIMMING	
F6	TAPE LIGHT WITH CHANNEL-DAMP AREA	LUMINII	BA42WET-HO-32K*-BXC-F-PDCU-W*-24	0 - 10V, 1% DIMMING	
F7	2" X 2" SQUARE DOWNLIGHT-DAMP AREA	SOLAIS	ST2ARM-S*-PW-BDM-PW-FL-9-35-900-UNV2-CT.*	0 - 10V, 1% DIMMING	
F8	1" DOWNLIGHT	BRUCK LIGHTING	NU1-RDDR-SW-07LM-35K-90-30D-DL-WH-WH*-LVL-DX-C*-UNV-DIM10.*		
F9	TAPE LIGHT -SAUNA	LUMINII	KLB-S-VB*-33LO-35K-SF-MC-KBL-SAP-SM-0.8-SA-WH*-PDCU-W*-24		AT SAUNA BENCH AND BACK
EX	EXIT LIGHT		ELXTEU-1-G-C-W.*		

PLUMBING FIXTURE SCHEDULE

MARK	DESCRIPTION	MANUFACTURER	MODEL NO.	REMARKS
MS-1	MOP SINK	FLAT T&S BRASS	MSB2424	FAUCET: T&S BRASS B-06650BSTP, HOSE AND HOLDER, MOP HANGER
FD-1	EXISTING FLOOR DRAIN TO REMAIN			KEEP THE BODY AND REPLACE WITH NEW GATE
FD-2	LINEAR DRAIN			
WC-1	FLOOR MOUNTED TOILET	AMERICAN STANDARD	MLODA ELONGATED #3043.001 TOP SPUD	SLOAN G2 OPTIMA PLUS #8111 SENSOR OPERATED FLUSHOMETER, 1.28 GPF OLSONITE 95C OPEN FRONT SEAT, LESS COVER
L-1	UNDERMOUNT SINK	AMERICAN STANDARD	STUDIO #0614000.020	BRADLEY - VERGE S53-3700 ZEN SERIES TOUCHLESS FAUCET; HARDWIRED
EWC-1	ADA WATER COOLER	HALSEY TAYLOR	HAC8SS-WF	WALL HUNG, ELETRIC DRINKING FOUNTAIN
SH-1	ADA SHOWER	SYMMONS	-	SHOWER HEAD & TRIM
SH-2	SHOWER	SYMMONS	-	SHOWER HEAD & TRIM
UR-1	URINAL	AMERICAN STANDARD	LYNNBROOK 6601.012	SLOAN G2 OPTIMA PLUS #8180-1.0 SENSOR OPERATED FLUSHMETER, INSTALL URINAL AT ADA HEIGHT
HB-1	HOUSE BIBB			

EQUIPMENT SCHEDULE

NOTE: GENERAL CONTRACTOR TO COORDINATE WITH OWNER ON CONTRACTOR INSTALLED ITEMS.

MARK	DESCRIPTION	MANUFACTURER	MODEL NO.	REMARK
EQ1	STANDUP TANNING			
EQ2	SCALE			

TOILET ACCESSORY SCHEDULE

NOTE: GENERAL CONTRACTOR TO CONFIRM ALL WALL THICKNESS CAN ACCOMMODATE RECESSED ITEMS AND PROVIDE BLOCKING FOR ALL

MARK	DESCRIPTION	MANUFACTURER	MODEL NO.	REMARKS
TA1	TOILET PAPER DISPENSER	BOBRICK	B-9890 FINO COLLECTION	SURFACE-MOUNTED
TA2	TOILET PAPER DISPENSER	BOBRICK	B-35139 TRIMLINESERIES COLLECTION	SURFACE-MOUNTED
TA3	NOT USED			
TA4	TOILET PARTITION	BOBRICK	DESIGNER SERIES HPL 1040 SEE REMARKS FOR FINISH	CONTRACTOR PURCHASED AND INSTALLED.
TA5	URINAL SCREEN	BOBRICK	DESIGNER SERIES HPL 1040 SEE REMARKS FOR FINISH	CONTRACTOR PURCHASED AND INSTALLED.
TA6A	GRAB BAR	BOBRICK	B-6806-36 STAINLESS STEEL SATIN FINISH	-
TA6B	GRAB BAR	BOBRICK	B-6806-42 STAINLESS STEEL SATIN FINISH	-
TA7	SHOWER GRAB BAR	BOBRICK	B-6861-1830 STAINLESS STEEL SATIN FINISH	-
TA8	SHOWER SEAT	BOBRICK	B-517/518 SATIN FINISH	-
TA9	CURTAIN ROD	BOBRICK	B-207X60 STAINLESS STEEL SATIN FINISH	-
TA10	MIRROR	BOBRICK	B-165-2436 STAINLESS STEEL SATIN FINISH	-
TA11A	BACKLIT MIRROR	MIRROR AND MARBLE	LED MIRROR SIDE LIGHTED 28X44	-
TA11B	BACKLIT MIRROR	MIRROR AND MARBLE	LED MIRROR SIDE LIGHTED 32X48	-
TA11C	BACKLIT MIRROR	MIRROR AND MARBLE	LED MIRROR SIDE LIGHTED 60X40	-
TA11D	BACKLIT MIRROR	-	24X80	-
TA12	COUNTERTOP MOUNTED SOAP DISPENSER	BRADLEY	6-3700 VERGE,ZEN SERIES BRUSH STAINLESS FINISH, HARDWIRED, INDIVIDUAL	-
TA13	DOUBLE COAT HOOK	BOBRICK	B-6727 STAINLESS STEEL SATIN FINISH	-



Project
CROSS GATES FAMILY FITNESS
200 N MILITARY ROAD,
SLIDELL, LA 70461

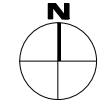
Project No:
24-03-01



FABIANO DESIGNS INTERNATIONAL
6 SOUTH FULLERTON AVENUE
MONTCLAIR, NJ 07042 USA
973-746-5100
WWW.FABIANODESIGN.COM

Copyright © 2024 - FABIANO DESIGNS
No Reselling Or Reproductions Without
Written Permission from FABIANO DESIGNS

KEY PLAN



PROFESSIONAL SEAL

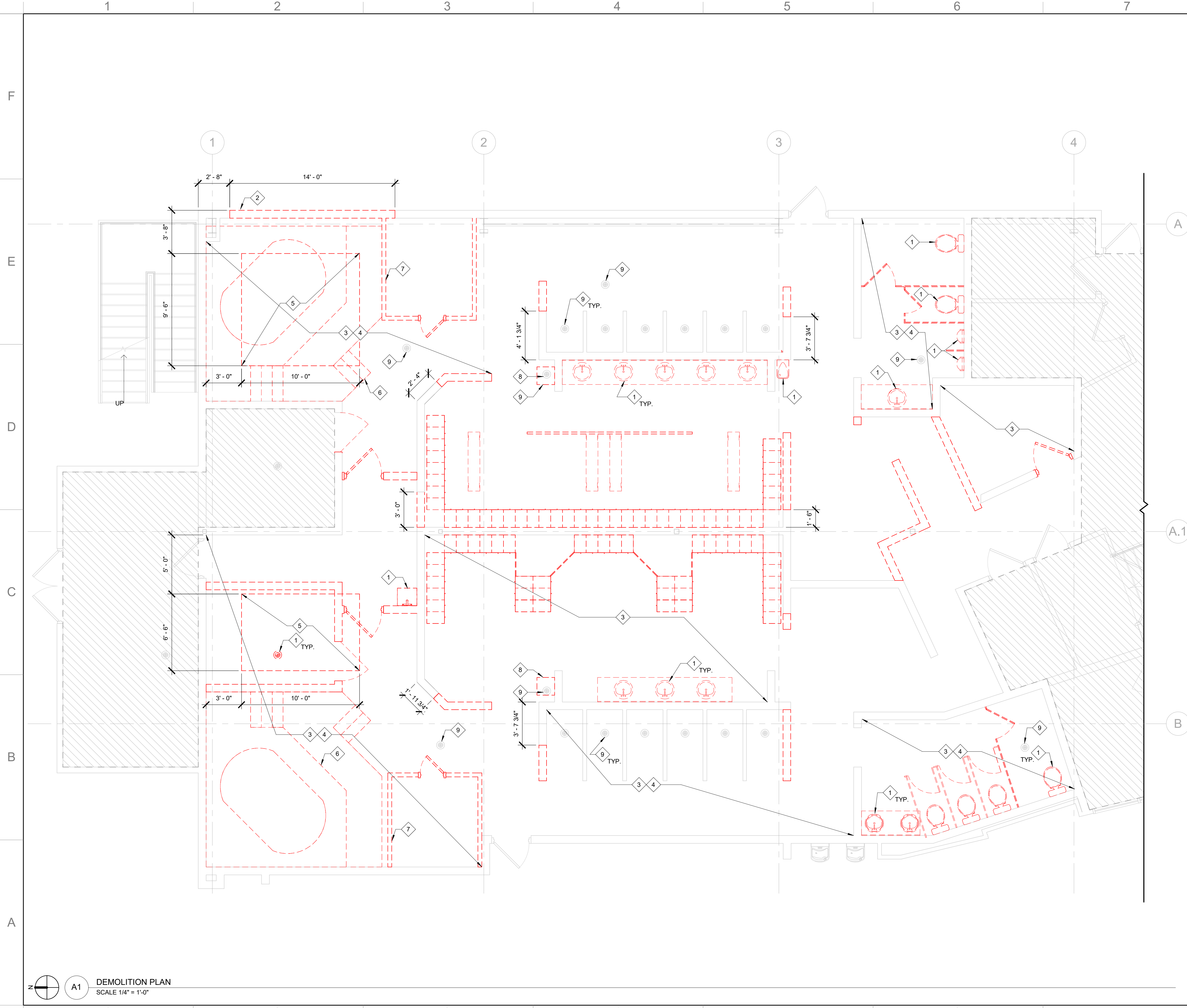
No.	Date	Description
	11/01/2021	ISSUED FOR DESIGN DEVELOPMENT

Sheet Title:
PLUMBING FIXTURE AND TOILET ACCESSORY

ORIGINAL DRAWINGS IS 34X22
DO NOT SCALE CONTENTS OF THIS DRAWINGS

Sheet Number:
A020

Page Number: of



LEGEND

- EXISTING CONSTRUCTION TO REMAIN
- ITEM TO BE REMOVED

GENERAL NOTES

1. REFER TO G070 FOR GENERAL DEMOLITION NOTES.


KEY NOTES

- 1 G.C. TO REMOVE EXISTING PLUMBING FIXTURES. CAP OFF ALL UTILITY LINE AS PER LOCAL BUILDING CODES.
- 2 REMOVE PORTION OF EXTERIOR WALL.
- 3 REMOVE EXISTING FLOOR FINISH DOWN TO SUBSTRATE; PATCH AND PREP TO RECEIVE NEW FINISH.
- 4 REMOVE EXISTING WALL FINISH DOWN TO SUBSTRATE.
- 5 REMOVE PORTION OF SLAB TO ACCOMMODATE WHIRLPOOL AND COLD PLUNGE.
- 6 REMOVE EXISTING WHIRLPOOL AND ASSOCIATED EQUIPMENT.
- 7 REMOVE EXISTING SAUNA SYSTEM.
- 8 REMOVE SWIM SUIT DRYER AND STORE FOR REUSE.
- 9 REMOVE EXISTING GRATE AND KEEP THE FLOOR DRAIN BODY.



Project
CROSS GATES FAMILY FITNESS
200 N MILITARY ROAD,
SLIDELL, LA 70461

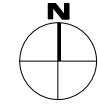
Project No:
24-03-01



FABIANO DESIGNS INTERNATIONAL
6 SOUTH FULLERTON AVENUE
MONTCLAIR, NJ 07042 USA
973-746-5100
WWW.FABIANODESIGNS.COM

Copyright © 2024 - FABIANO DESIGNS
No Reselling Or Reproductions Without
Written Permission from FABIANO DESIGNS

KEY PLAN



PROFESSIONAL SEAL

--	--	--

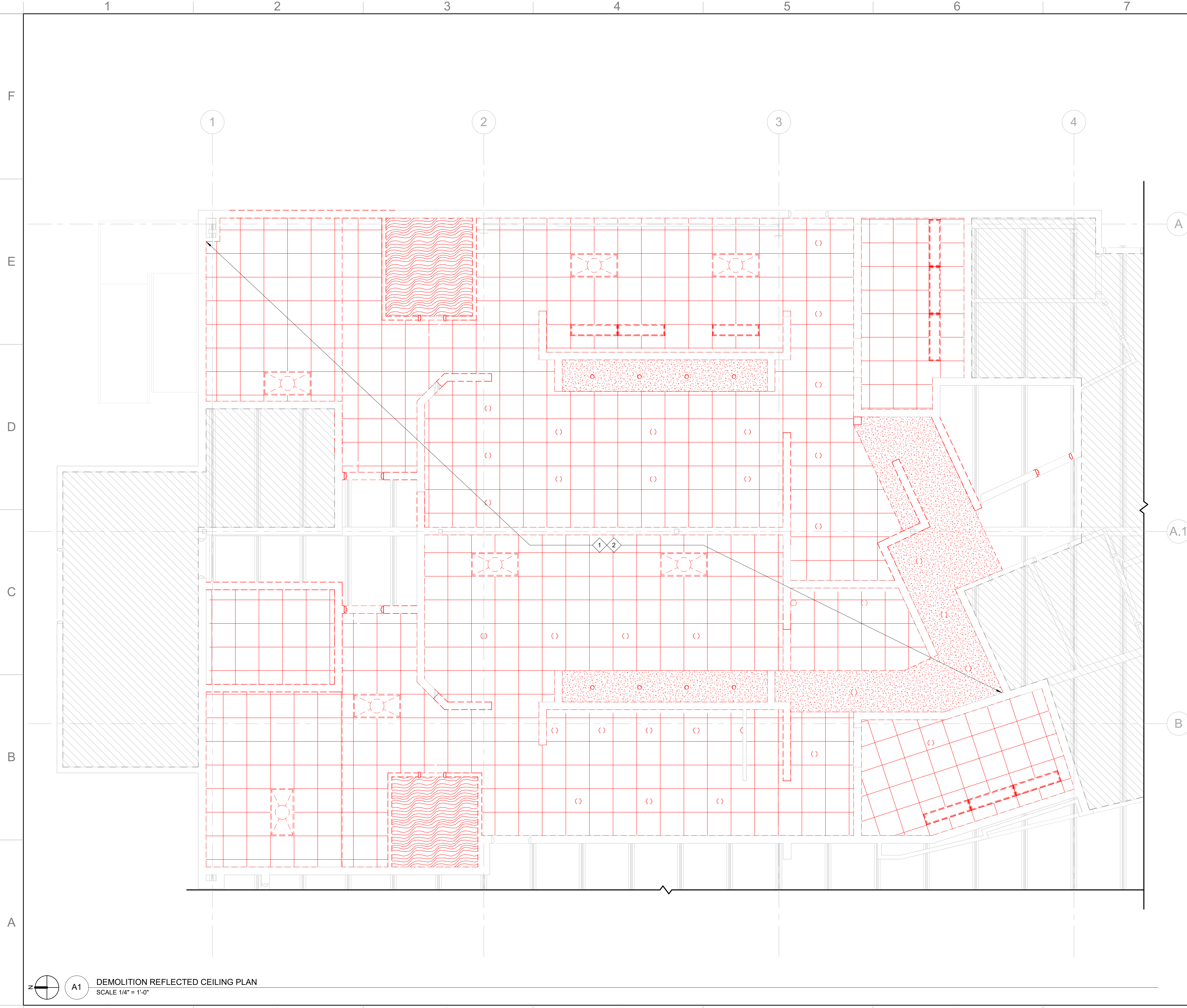
No.	Date	Description
	11/01/2021	ISSUED FOR DESIGN DEVELOPMENT

Sheet Title:
DEMOLITION PLAN

ORIGINAL DRAWINGS IS 34X22
DO NOT SCALE CONTENTS OF THIS DRAWINGS

Sheet Number:
AD101

Page Number: *of*



LEGEND

EXISTING CONSTRUCTION TO REMAIN	=====
ITEM TO BE REMOVED	-----

GENERAL NOTES

- REFER TO G070 FOR GENERAL DEMOLITION NOTES

KEY NOTES

- REMOVE EXISTING LIGHTING AND CAP OFF IN THIS AREA.
- REMOVE EXISTING CEILING IN THIS AREA.

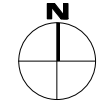


Project
CROSS GATES FAMILY FITNESS
 200 N MILITARY ROAD,
 SLIDELL, LA 70461
 Project No:
 24-03-01



FABIANO DESIGNS INTERNATIONAL
 6 SOUTH FULLERTON AVENUE
 MONTCLAIR, NJ 07042 USA
 973-746-5100
 WWW.FABIANODESIGNS.COM

Copyright © 2024 - FABIANO DESIGNS
 No Reselling Or Reproductions Without
 Written Permission from FABIANO DESIGNS

KEY PLAN 

PROFESSIONAL SEAL

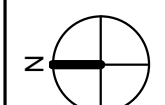
No.	Date	Description
1	11/01/2021	ISSUED FOR DESIGN DEVELOPMENT

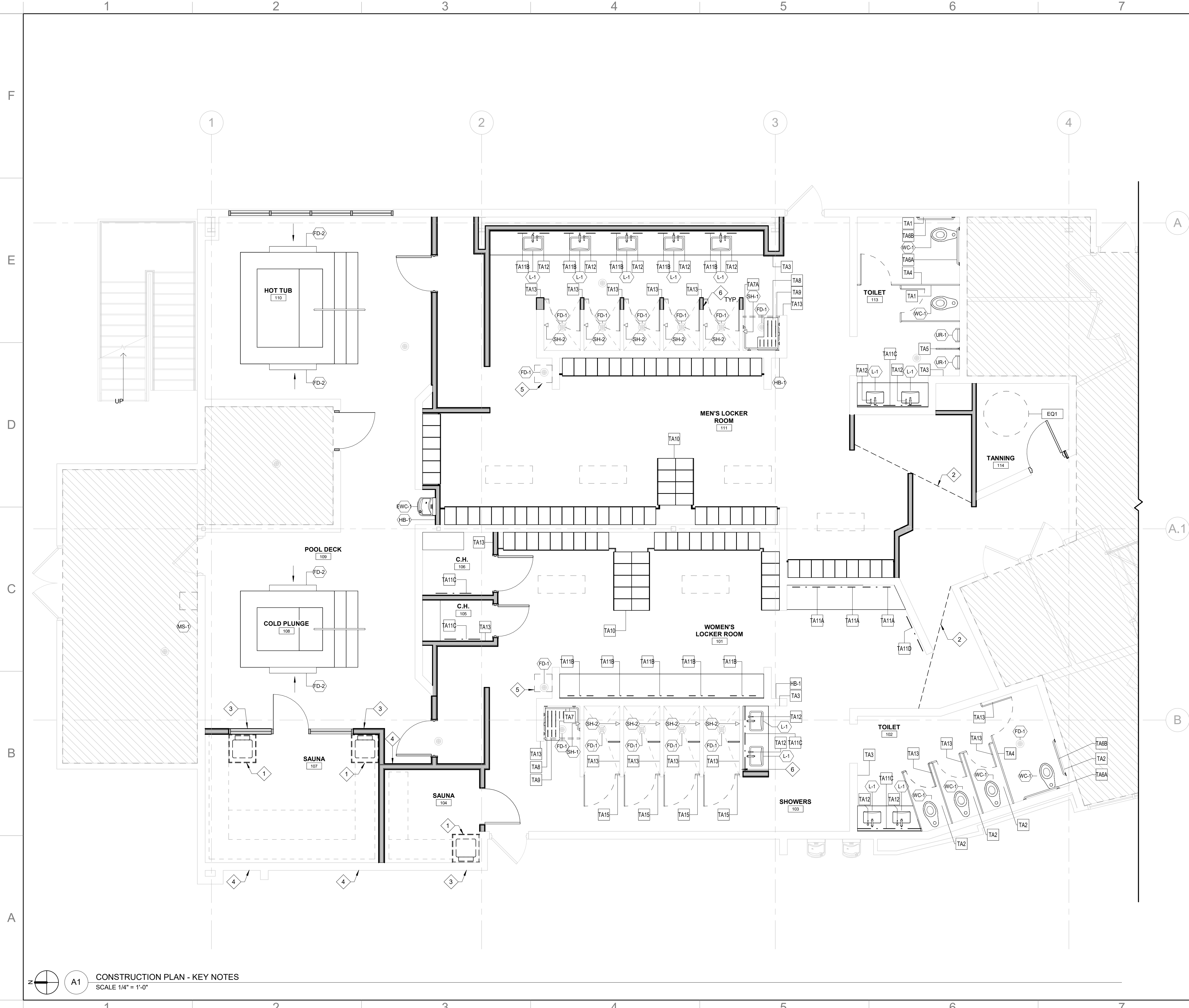
Sheet Title:
DEMOLITION REFLECTED CEILING PLAN

ORIGINAL DRAWINGS IS 34X22
 DO NOT SCALE CONTENTS OF THIS DRAWINGS

Sheet Number:
AD201

Page Number: of

 A1 **DEMOLITION REFLECTED CEILING PLAN**
 SCALE 1/4" = 1'-0"



GENERAL NOTES

1. COMPLY WITH THE REQUIREMENTS OF THE LATEST APPLICABLE ACCESSIBILITY DESIGN GUIDELINE AND LOCAL CODES FOR THE PLACEMENT OF ALL TOILET ACCESSORIES.
2. PROVIDE BLOCKING OR STRAPPING AS REQUIRED TO SUPPORT ALL TOILET ACCESSORIES AND COMPARTMENTS. GRAB BARS SHALL BE SUPPORTED BY 2" X 6" NOMINAL BLOCKING.
3. ALL BLOCKING SHALL BE FIRE RETARDANT.
4. ALL METAL SURFACE PROTECTION SHALL REMAIN IN PLACE UNTIL THE TIME OF FINAL CLEANING. REMOVE ALL LABELS AND PROTECTIVE SHEETS AT THAT TIME. OPENINGS FOR RECESSED ACCESSORIES SHALL BE NEATLY CUT TO THE UNIT OR A MATCHING COVER PLATE. SEAL ALL UNITS TO THE ADJACENT SURFACES. ALL UNITS SHALL BE LEVEL AND PLUMB. USE CONCEALED FASTENERS WHEREVER POSSIBLE.
5. PROVIDE ALL HARDWARE, BRACKETS AND OTHER APPURTENANCES AS REQUIRED FOR A COMPLETE INSTALLATION.
6. UNLESS NOTED OTHERWISE, ALL TOILET ACCESSORIES ARE MINIMUM 22 GA #4 BRUSHED STAINLESS STEEL.
7. REFER TO A020 FOR PLUMBING FIXTURE SCHEDULE.
8. REFER TO A020 FOR TOILET ACCESSORY SCHEDULE.
9. REFER TO G070 FOR GENERAL NOTES AND DRAWING ANNOTATIONS.
10. REFER TO A020 FOR EQUIPMENT SCHEDULE.

PLAN NOTES

- 1 ELECTRIC SAUNA HEATER.
- 2 SIGHT LINE.
- 3 THRU-WALL INTAKE VENT
- 4 THRU-WALL EXHAUST VENT.
- 5 RELOCATED EXISTING SWIMSUIT DRYER.
- 6 PATCH THE WALL ABOVE AND EXTEND WITH SAME EXISTING WALL TYPE.



Project
CROSS GATES FAMILY FITNESS
 200 N MILITARY ROAD,
 SLIDELL, LA 70461

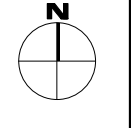
Project No:
 24-03-01



FABIANO DESIGNS INTERNATIONAL
 6 SOUTH FULLERTON AVENUE
 MONTCLAIR, NJ 07042 USA
 973-746-5100
 WWW.FABIANODESIGNS.COM

Copyright © 2024 - FABIANO DESIGNS
 No Reselling Or Reproductions Without
 Written Permission from FABIANO DESIGNS

KEY PLAN



PROFESSIONAL SEAL

No.	Date	Description
	11/01/2021	ISSUED FOR DESIGN DEVELOPMENT

Sheet Title:
CONSTRUCTION PLAN - KEY NOTES

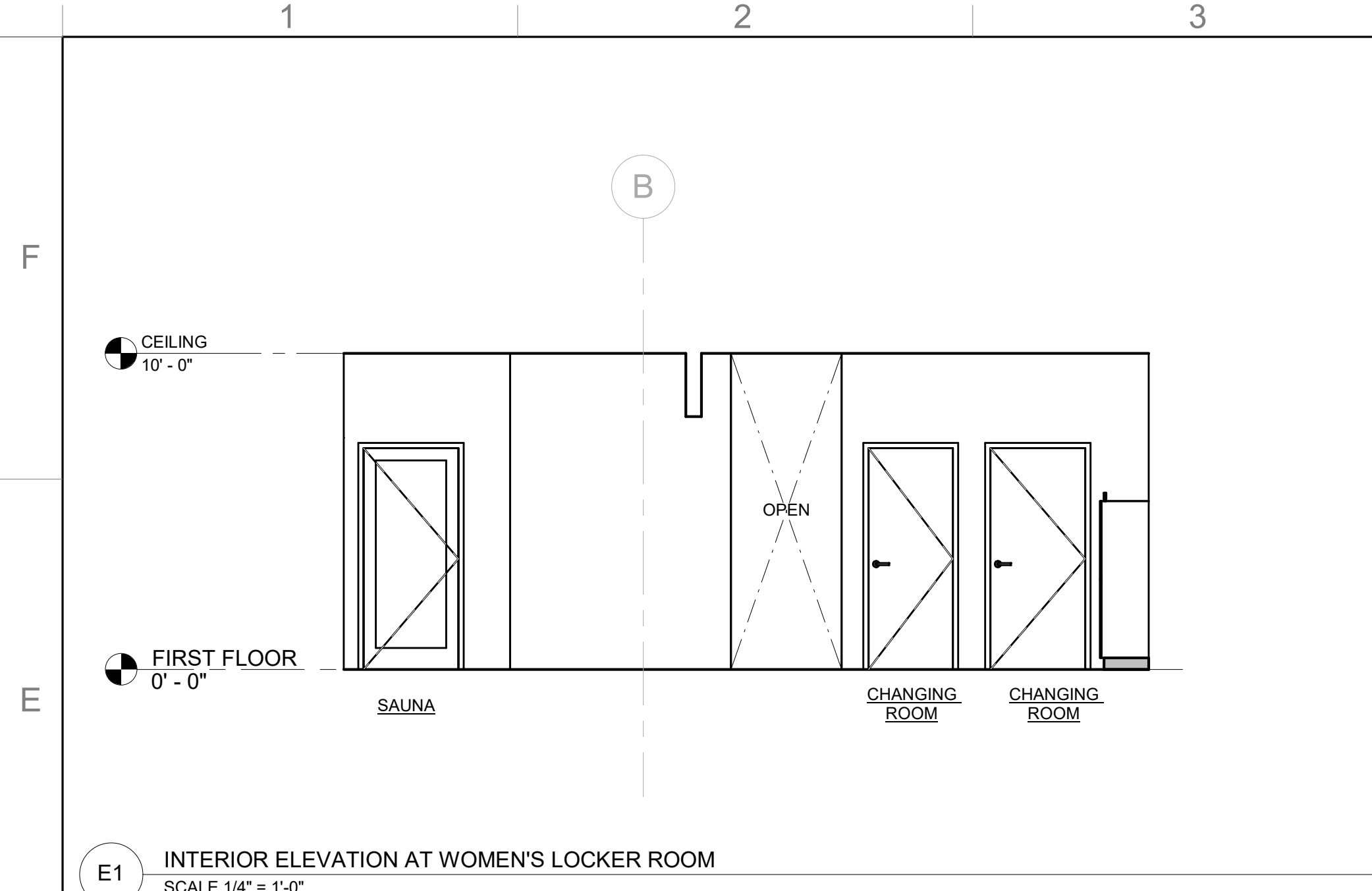
ORIGINAL DRAWINGS IS 34X22.
 DO NOT SCALE CONTENTS OF THIS DRAWINGS

Sheet Number:

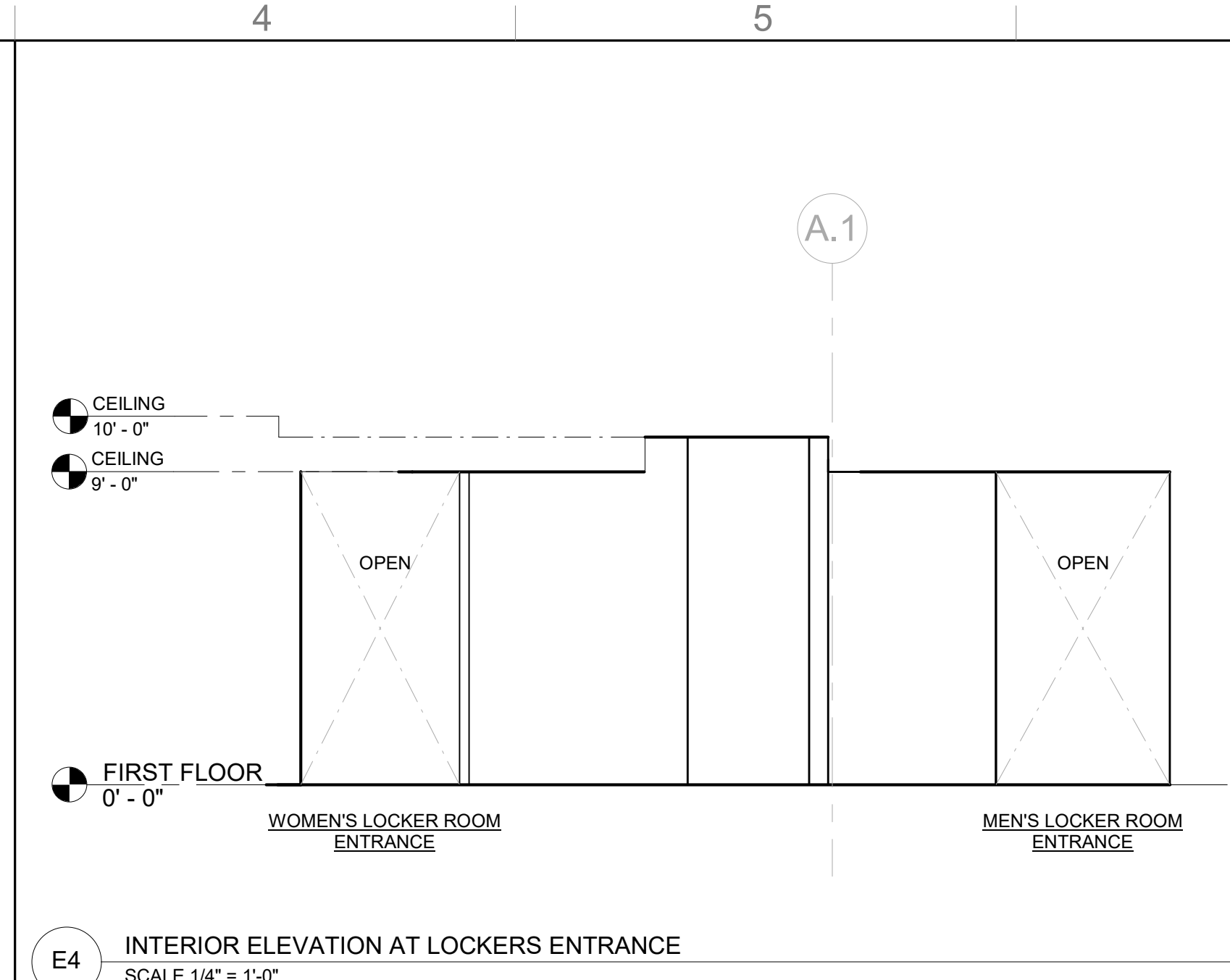
A130

Page Number: of

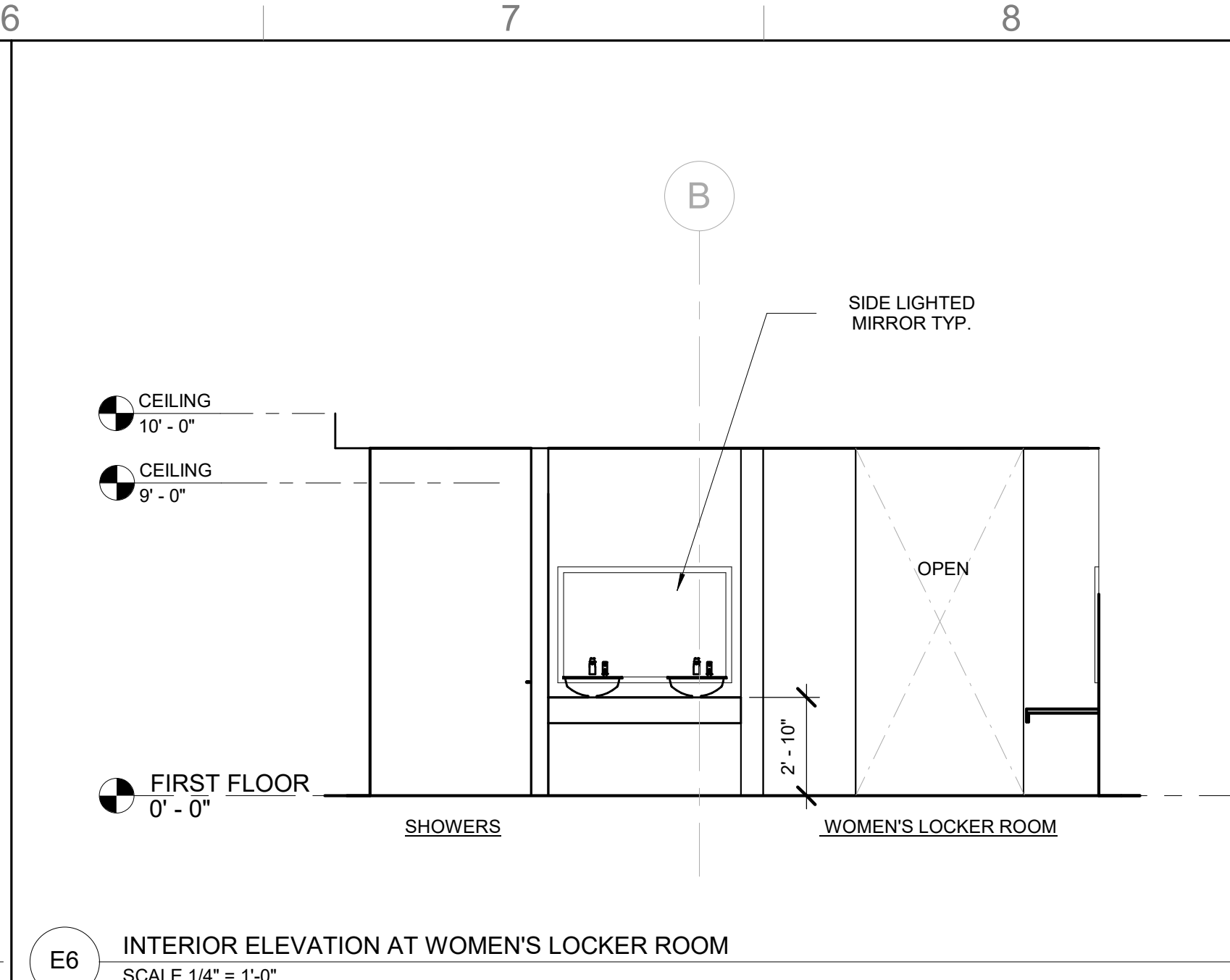
CONSTRUCTION PLAN - KEY NOTES
 SCALE 1/4" = 1'-0"



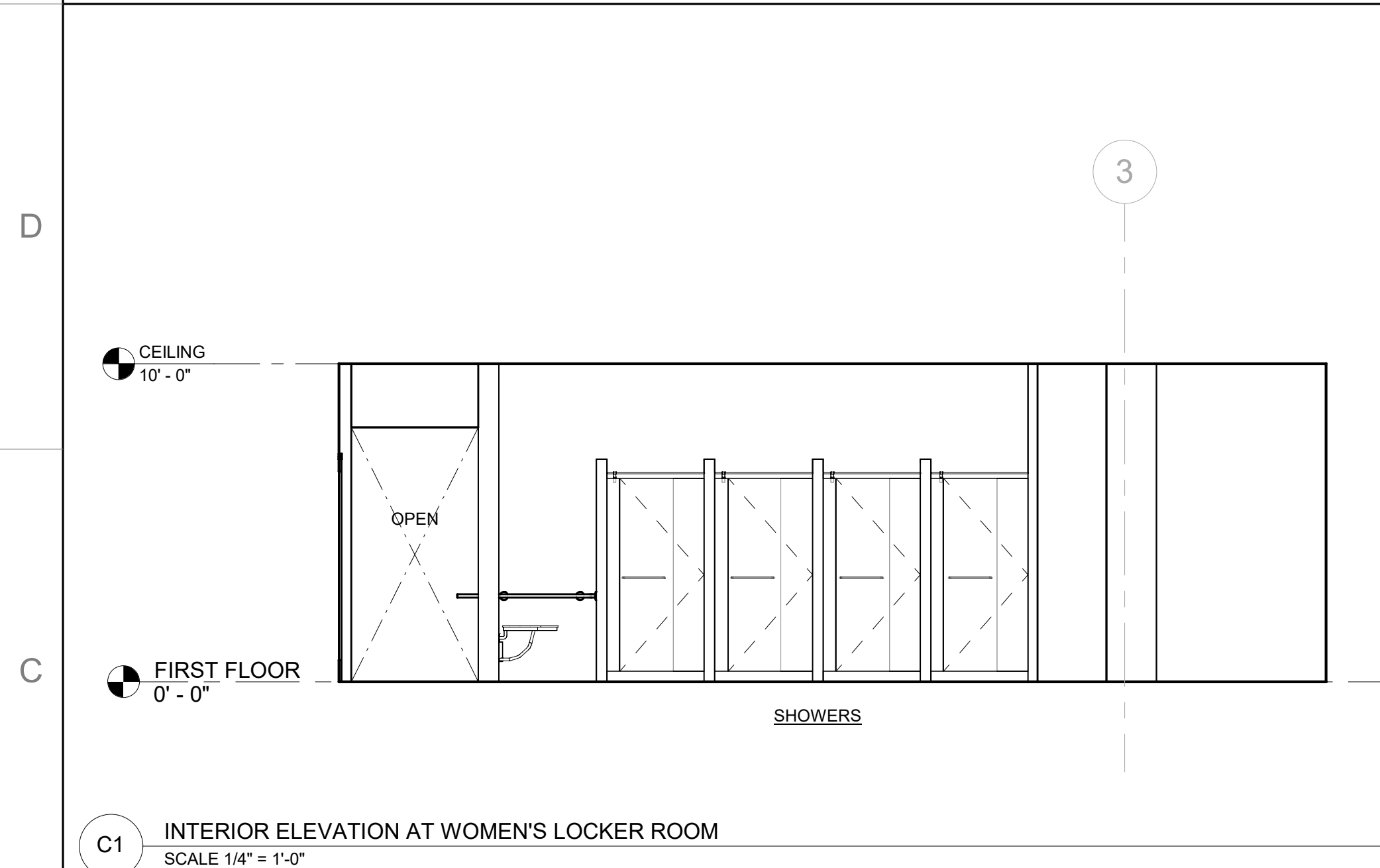
E1 INTERIOR ELEVATION AT WOMEN'S LOCKER ROOM
 SCALE 1/4" = 1'-0"



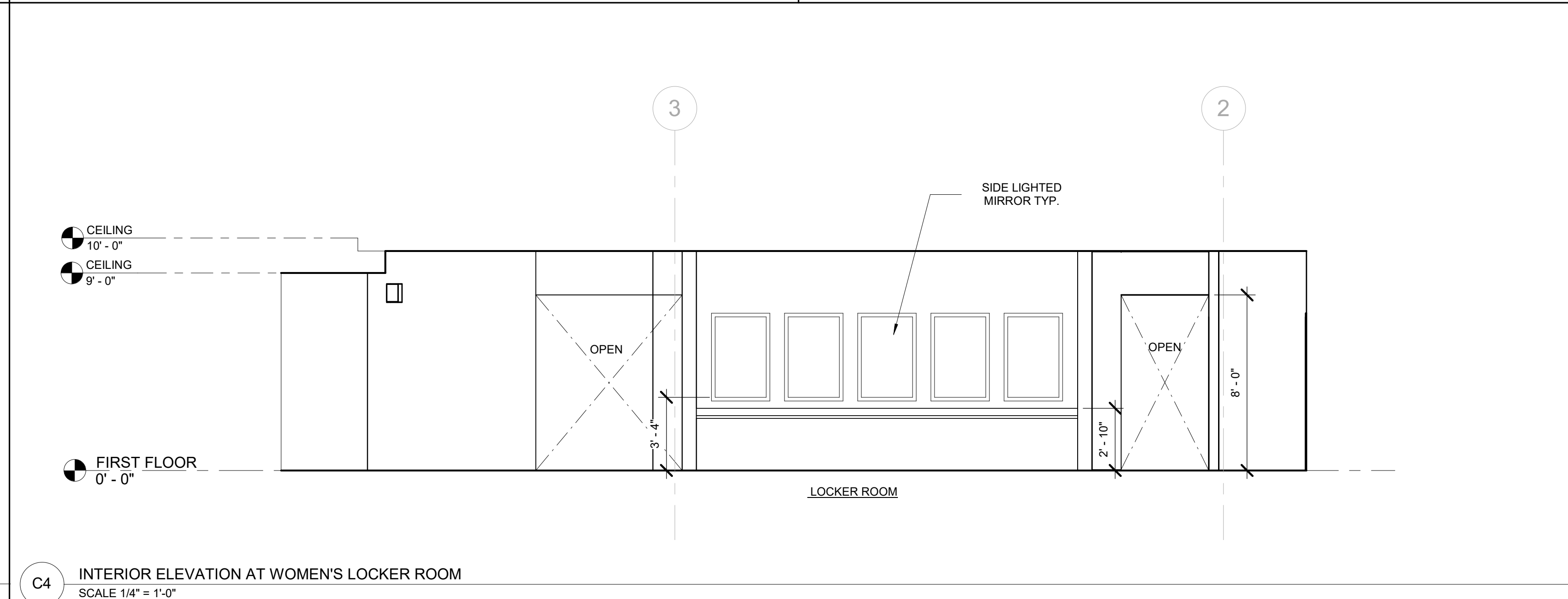
E4 INTERIOR ELEVATION AT LOCKERS ENTRANCE
 SCALE 1/4" = 1'-0"



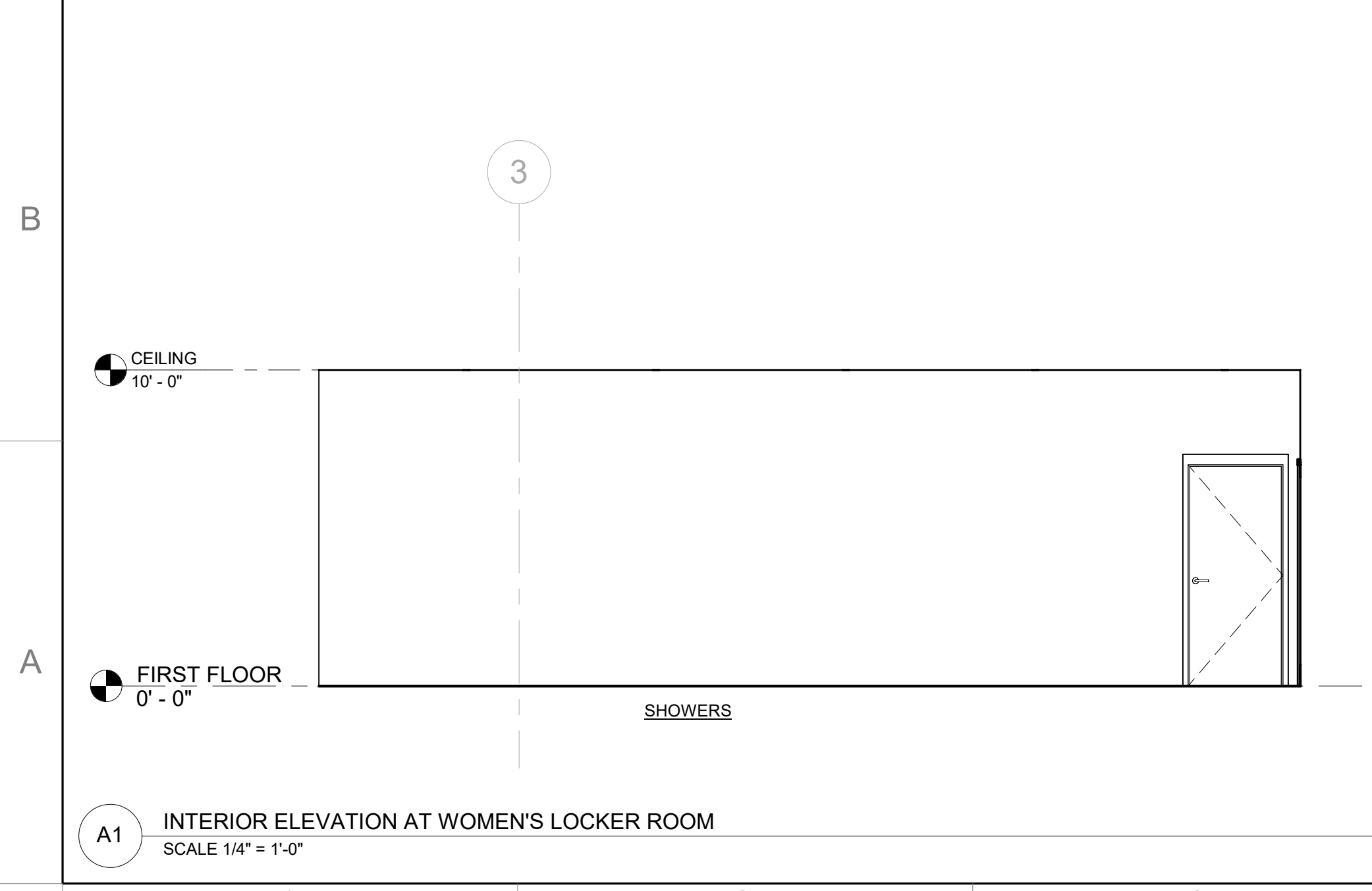
E6 INTERIOR ELEVATION AT WOMEN'S LOCKER ROOM
 SCALE 1/4" = 1'-0"



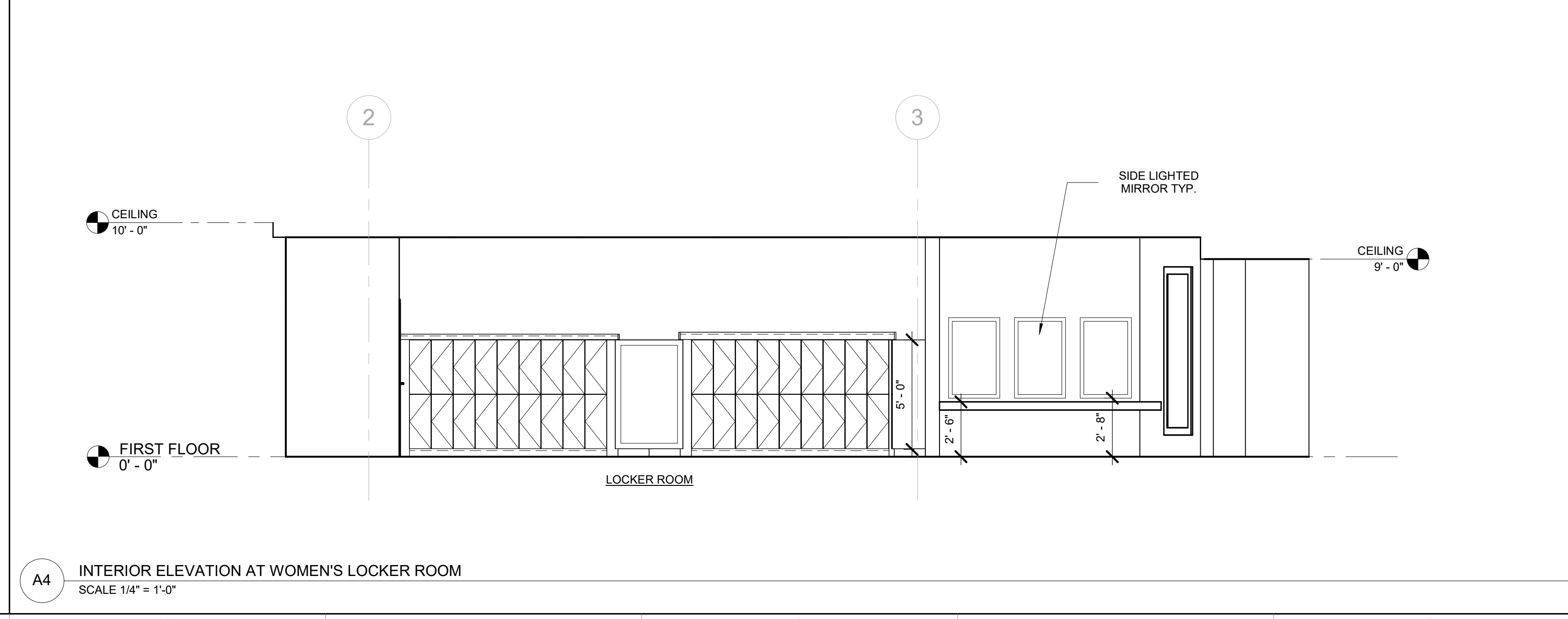
C1 INTERIOR ELEVATION AT WOMEN'S LOCKER ROOM
 SCALE 1/4" = 1'-0"



C4 INTERIOR ELEVATION AT WOMEN'S LOCKER ROOM
 SCALE 1/4" = 1'-0"



A1 INTERIOR ELEVATION AT WOMEN'S LOCKER ROOM
 SCALE 1/4" = 1'-0"



A4 INTERIOR ELEVATION AT WOMEN'S LOCKER ROOM
 SCALE 1/4" = 1'-0"

KEY PLAN

PROFESSIONAL SEAL

No.	Date	Description
11/01/2021	ISSUED FOR DESIGN DEVELOPMENT	

Sheet Title:
INTERIOR ELEVATIONS

ORIGINAL DRAWINGS IS 34X22
 DO NOT SCALE CONTENTS OF THIS DRAWINGS

Sheet Number:
A501

Page Number: of

FINISH AND MATERIAL SCHEDULE

MARK	DESCRIPTION	MANUFACTURER	PRODUCT NAME	MODEL NUMBER	SIZE	COLOR	FINISH	REMARKS
ACOUSTIC PANEL								
AP-1	ACOUSTIC PANEL							
CARPET								
C-1	CARPET							
DRAPERY								
DR-1	DRAPERY							
EPOXY FLOOR								
EF-1	EPOXY FLOOR							
GLASS								
GL-1	GLASS							
GRAPHIC FILM								
GF-1	GRAPHIC FILM							
GREEN WALL								
GW-1	GREEN WALL							
PLASTIC LAMINATE								
PL-1	PLASTIC LAMINATE							
RESILIENT BASE								
RB-1	RESILIENT BASE							
RESILIENT FLOORING								
RF-1	RESILIENT FLOORING							
SOLID SURFACE								
SS-1	SOLID SURFACE							
TILE								
T-1	TILE							
TURF								
TF-1	TURF							
WALL PAINT								
P-1	WALL PAINT	SHERWIN WILLIAMS				EXTRA WHITE	EGGSHELL	
WALL PROTECTION								
WP-1	WALL PROTECTION							
WALLCOVERING								
WC-1	WALLCOVERING				54" W			
WINDOW TREATMENT								
WT-1	WINDOW TREATMENT							
WOOD								
WD-1	WOOD							
WOOD BASE								
WB-1	WOOD BASE							



Project
CROSS GATES FAMILY FITNESS
 200 N MILITARY ROAD,
 SLIDELL, LA 70461
 Project No:
 24-03-01



FABIANO DESIGNS INTERNATIONAL
 6 SOUTH FULLERTON AVENUE
 MONTCLAIR, NJ 07042 USA
 973-746-5100
 WWW.FABIANODESIGN.COM
Copyright © 2024 - FABIANO DESIGNS
 No Reselling Or Reproductions Without
 Written Permission from FABIANO DESIGNS

KEY PLAN

PROFESSIONAL SEAL

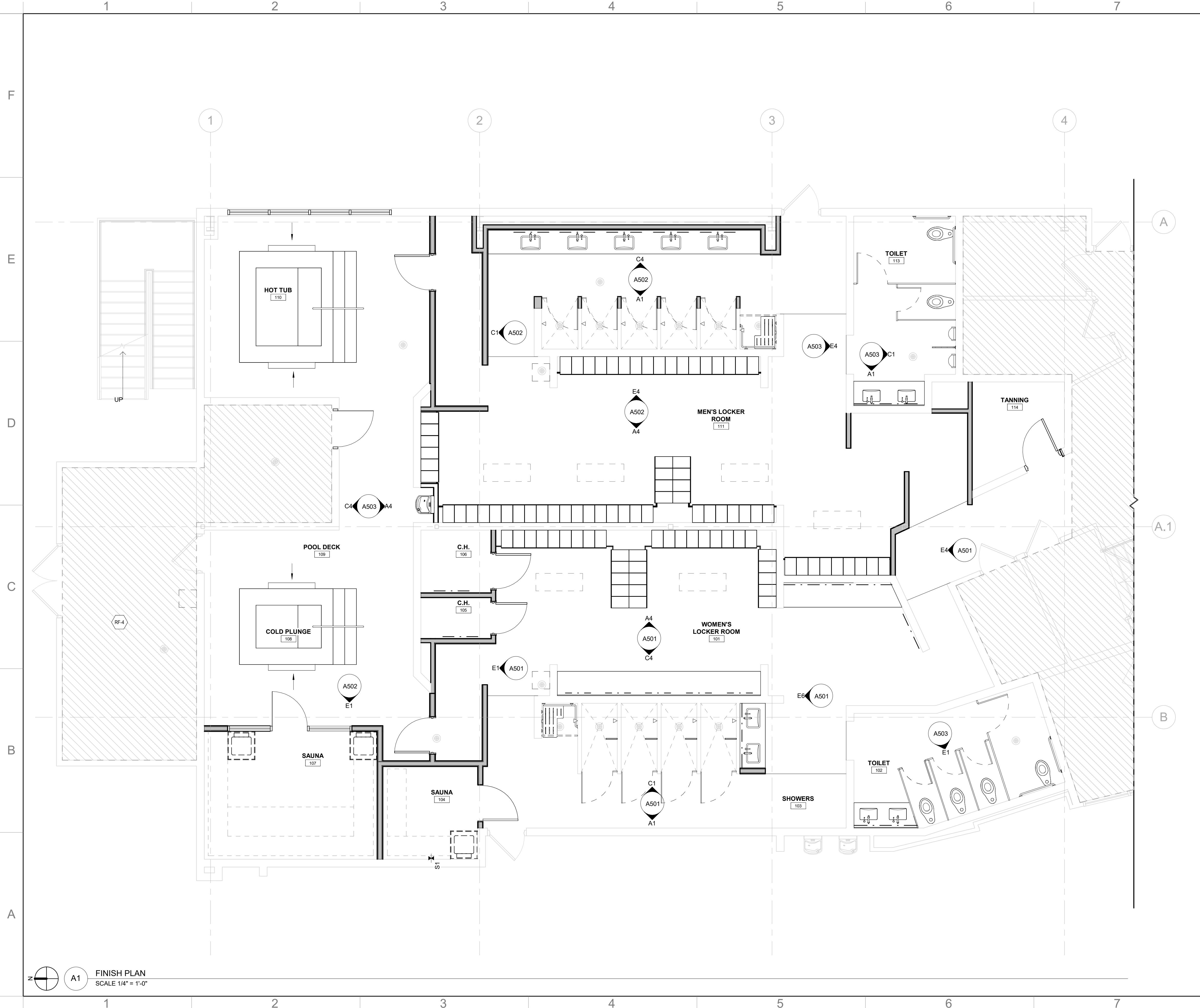
No.	Date	Description
	11/01/2021	ISSUED FOR DESIGN DEVELOPMENT

Sheet Title:
FINISH AND MATERIAL SCHEDULE

ORIGINAL DRAWINGS IS 34X22
 DO NOT SCALE CONTENTS OF THIS DRAWINGS

Sheet Number:
A600

Page Number: of



GENERAL FINISH NOTES

1. REFER TO G070 FOR GENERAL FINISH NOTES AND DRAWING ANNOTATIONS.
2. REFER TO A060 FOR FINISH AND MATERIAL SCHEDULE.
3. REFER TO A670 FOR FLOOR TRANSITION DETAILS.

FINISH PLAN NOTES

1. PAINT EXISTING COLUMNS (P-2), U.O.N. TYP.
2. WALL RUBBER (WC-3) TO BE INSTALLED UP TO 1'-8" A.F.F. TOP EDGES TO BE CAPPED WITH SCHLUTER "SCHIENE" PROFILE IN (AE) FINISH; REFER TO FINISH PLAN AND ELEVATION FOR ADDITIONAL INFORMATION.
3. WALL CARPET (WC-6) TO BE INSTALLED UP TO 6'-0", U.O.N., FINISH EXPOSED EDGE WITH SCHLUTER TRIM PROFILE "SCHIENE".
4. EXISTING SEALED CONCRETE TO REMAIN. PATCH WHERE REQUIRED BASED ON SITE VERIFICATION.
5. CUSTOM GRAPHIC BY OWNER/GRAPHIC VENDOR.
6. INSTALL CHAIR RAIL; CONFIRM HEIGHT AND EXTENT WITH OWNER.
7. WALLCOVERING (WC-5) UP TO 19'-0" A.F.F. WITH PAINT (P-2) ABOVE.
8. INSTALL SCHLUTER EDGE TRIM "QUADEC" PROFILE AT EXTERNAL CORNERS WHERE TILE AND TILE MEET. INSTALL SCHLUTER EDGE TRIM "SCHEINE" AT EXPOSED TILE EDGES. FINISH TO BE ALUMINUM.
9. REFER TO ELEVATIONS FOR SPECIFIC PAINT DESIGNATION. LAYOUT TO BE REVIEWED AND COORDINATED WITH CLIENT.

Project
CROSS GATES FAMILY FITNESS
 200 N MILITARY ROAD,
 SLIDELL, LA 70461
 Project No:
 24-03-01

FABIANO DESIGNS INTERNATIONAL
 6 SOUTH FULLERTON AVENUE
 MONTCLAIR, NJ 07042 USA
 973-746-5100
 WWW.FABIANODESIGNS.COM
 Copyright © 2024 - FABIANO DESIGNS
 No Reselling Or Reproductions Without
 Written Permission from FABIANO DESIGNS

KEY PLAN

PROFESSIONAL SEAL

No.	Date	Description
1	11/01/2021	ISSUED FOR DESIGN DEVELOPMENT

Sheet Title:
FINISH PLAN

ORIGINAL DRAWINGS IS 34X22.
 DO NOT SCALE CONTENTS OF THIS DRAWINGS

Sheet Number:
A601

Page Number: of

FINISH PLAN
 SCALE 1/4" = 1'-0"