

LIFE-SAFETY INFORMATION

APPLICABLE CODES
 NFPA 101 LIFE-SAFETY CODE 2015
 OCCUPANCY TYPE(S) AND CHAPTER(S)
 BUSINESS (CHAPTER 38)
 MULTIPLE, MIXED, OR SEPARATE OCCUPANCY (REFERENCE CHAPTER 6)
 N/A

OCCUPANT LOAD FACTOR (REFERENCE TABLE 7.3.1.2)
 2,160 SF / 100 SF PER OCCUPANT = 23 OCCUPANTS

CLASSIFICATION OF HAZARD OF CONTENTS
 (REFERENCE: OCCUPANCY CHAPTER AND 6.2.2: SPECIFY LOW, ORDINARY, OR HIGH)
 CONSTRUCTION TYPE(S) (REFERENCE: CHAPTERS, TABLE A.5.2.1.2 AND COMMENTARY TABLE 5.1 IN HANDBOOK)
 V

MINIMUM EXIT SEPARATION DISTANCE FOR REMOTELY LOCATED EXITS
 (REFERENCE: SECTION 7.5; SPECIFY 1/2 OR 1/3 DIAGONAL DISTANCE OF AREA SERVED)
 1/3 DIAGONAL = 24'-10"

MAXIMUM DEAD-END CORRIDORS (REFERENCE: OCCUPANCY CHAPTER AND TABLE A.7.6)
 30'

MAXIMUM COMMON PATH OF TRAVEL DISTANCE (REFERENCE: OCCUPANCY CHAPTER AND TABLE A.7.6)
 100'

MAXIMUM TRAVEL DISTANCE TO EXITS (REFERENCE: OCCUPANCY CHAPTER AND TABLE A.7.6)
 300'

MAIN ENTRANCE MUST BE SIGNED TO ACCOMMODATE 1/2 OCCUPANT LOAD OF BUILDING

DETECTION, ALARM, AND COMMUNICATION SYSTEMS NO
ALLOWABLE HEIGHT AND BUILDING AREA PER IBC EQUIVALENT CONSTRUCTION TYPE

BUILDING CODE INFORMATION

APPLICABLE CODES
 IBC 2021

BUSINESS GROUP B (IBC 2021 CHAPTER 19)

OCCUPANT LOAD CALCULATIONS (TABLE 1004.1.1)
 BUSINESS = 2,160 SQ FT 100 SF PER OCCUPANT (GROSS) 23 OCCUPANTS

CONSTRUCTION TYPE(S) (TABLE 504)
 VB (SECTION 504)

ALLOWABLE HEIGHT AND BUILDING AREA LIMITED BY TYPE OF CONSTRUCTION
 MAXIMUM HEIGHT IN STORIES (SECTION 504.4) 2
 MAXIMUM AREA IN SQUARE FEET (SECTION 503, 506 & 507, TABLE 503) 9,000

WIND SPEED DESIGN REQUIREMENTS

THIS BUILDING SHALL BE DESIGNED WITH IBC SEC 1609 AS A FULLY ENCLOSED BLDG USING THE FOLLOWING INFORMATION:

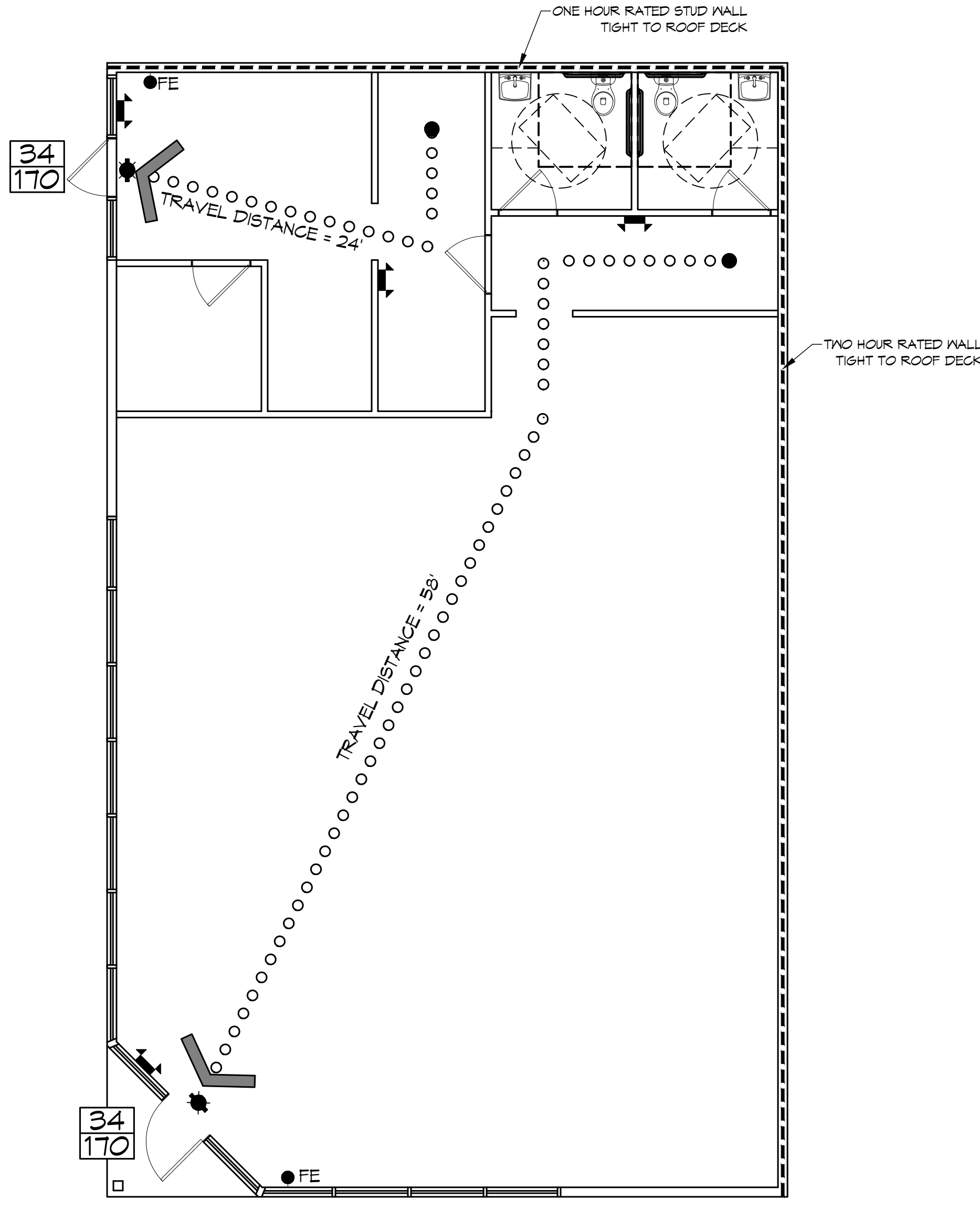
WIND DESIGN DATA:
 DETERMINATION OF WIND LOADS SHALL BE IN ACCORDANCE WITH IBC SEC 1609.3 (1), (2), OR (3) DEPENDING ON THE RISK CATEGORY
 WIND SPEED V_{ult} (3 SECOND GUST) = 144 MPH (IBC FIG. 1609.3(1))
 NOMINAL DESIGN WIND SPEED V_{std} = 111 MPH ($V_{ult} \times (0.6)^{1/2}$)
 RISK CATEGORY: CATEGORY II BLDG SURFACE ROUGHNESS = C
 TOPOGRAPHIC FACTOR = 1 EXPOSURE = C
 DESIGN WIND PRESSURE (ASCE 7-10 TABLE 26.6-1): 37.7 PSF
 INTERNAL PRESSURE COEFFICIENT (ASCE 7-10 TABLE 26.11-1): ± 0.18

LIVE LOADS (IBC SEC 1607)
 OFFICE LOBBIES & CORRIDORS 1ST FLOOR (IBC TABLE 1607.1): 100 PSF
 OFFICES (IBC TABLE 1607.1): 50 PSF
 ROOF LIVE LOADS (IBC TABLE 1607.1): 20 PSF UNIFORM, 300 LB CONCENTRATED

SNOW LOADS (IBC SEC 1609):
 GROUND SNOW LOAD (IBC FIG 1609.2): 5 PSF

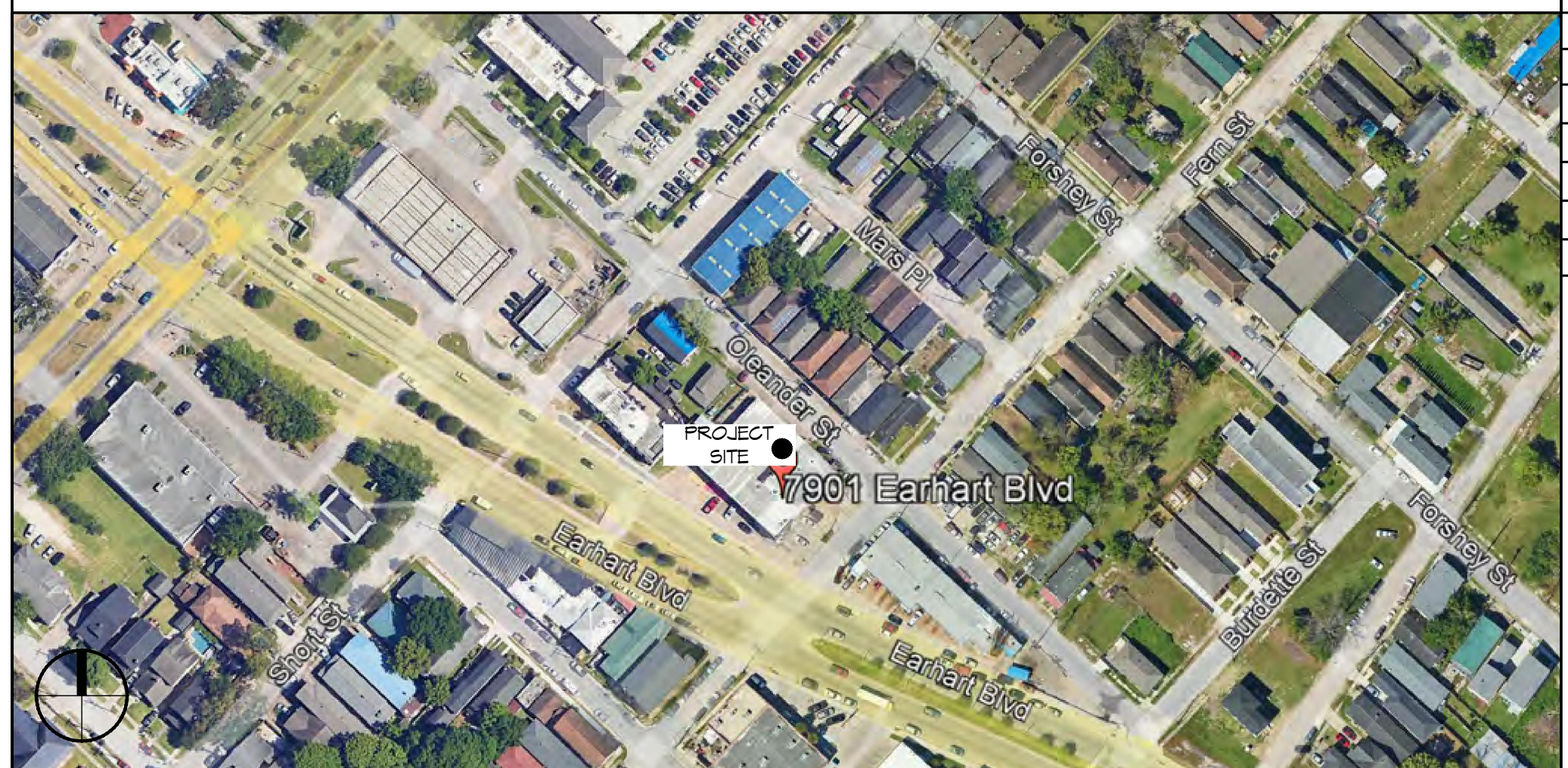
LIFE-SAFETY LEGEND

SYMBOL	DESCRIPTION
➤	EXITS
45	DOOR FIRE RATINGS (MINUTES)
36 170	DOOR WIDTH/EGRESS CAPACITY
⊙	EXIT LIGHT
• FE	FIRE EXTINGUISHER IV WALL MTD BRACKET
—	COMMON PATH OF TRAVEL
••••••••••	TRAVEL DISTANCE
•	DECISION POINT



LIFE-SAFETY PLAN
 SCALE: 3/16" = 1'-0"

VICINITY MAP



SHEET INDEX

SHEET #	SHEET TITLE
G101	GENERAL INFORMATION SHEET
C101	EXISTING SITE PLAN
D101	DEMOLITION PLAN
A101	FLOOR PLAN
A102	REFLECTED CEILING PLAN
E101	POWER & MECHANICAL PLAN AND LIGHTING PLAN

GENERAL NOTES

- ALL MATERIALS AND WORK, INCIDENTAL TO THE CONSTRUCTION OF THIS PROJECT, SHALL CONFORM TO ALL GOVERNING CODES, AND REGULATIONS OF AGENCIES IN AUTHORITY.
- CONTRACTOR SHALL PROVIDE ALL PUBLIC PROTECTIONS NECESSARY AS REQUIRED BY LAW.
- THE DRAWINGS AND ANY SUBSEQUENTLY ISSUED ADDENDA, AMENDMENTS OR SUCH CHANGE ORDERS APPROVED BY THE OWNER AND THE CONTRACTOR ARE PART OF THESE CONTRACT DOCUMENTS.
- DO NOT SCALE DRAWINGS. CONSULT WITH THE ENGINEER REGARDING ANY ITEMS IN THE CONTRACT DOCUMENTS THAT REQUIRE CLARIFICATION.
- TRASH SHALL BE REMOVED FROM THE SITE NOT LESS THAN TWICE MONTHLY.
- THE GENERAL CONTRACTOR SHALL VERIFY EXISTING CONDITIONS PRIOR TO COMMENCING WORK AND REPORT ANY AND ALL DISCREPANCIES TO THE ARCHITECT.
- CONTRACTOR VEHICLES AND EQUIPMENT NECESSARY FOR CONSTRUCTION MAY BE PARKED ON THE SITE. OTHER VEHICLES PARKED ON THE SITE REQUIRE THE OWNER'S PERMISSION.
- ALL MATERIALS/EQUIPMENT SHALL BE INSTALLED PER MANUFACTURER'S RECOMMENDATIONS. WORK NOT CONSISTENT WITH MANUFACTURER'S RECOMMENDATIONS WILL BE REJECTED BY OWNER/ARCHITECT.

I HAVE RESEARCHED THE BUILDING AND RELATED CODES OF ORLEANS PARISH AND THE LOUISIANA STATE UNIFORM CONSTRUCTION CODE AND TO THE BEST OF MY KNOWLEDGE AND BELIEF THESE DRAWINGS ARE IN COMPLIANCE THEREWITH.

DAMMON ENGINEERING, INC.
 LOUISIANA & MISSISSIPPI
 Chief Engineer: Brian Mitchell, PE
 554 Old Spanish Trail
 Slidell, LA 70458
 www.dammonengineering.com
 info@dammonengineering.com
 PH: 985.649.5832

NO.	DATE	REVISIONS
1 <td></td> <td>DESCRIPTION</td>		DESCRIPTION



SUITE A&B RETAIL STRIP
NORTON EARHEART
 9102 FERN ST
 NEW ORLEANS, LA 70125
 JOB NO: 06-01-2025
 DATE: 06-01-2025
 DRAWN BY: CKD
 CHECKED BY: JMS

SHEET TITLE:
 GENERAL INFORMATION SHEET

DRAWING NUMBER:
G101

SHEET No: 1 of 6

GENERAL POWER NOTES

- ALL WORK SHALL CONFORM TO THE LATEST EDITION OF THE NATIONAL ELECTRICAL CODE, THE GOVERNING ELECTRICAL CODE AND ALL OTHER INSPECTION DEPARTMENTS HAVING JURISDICTION. OBTAIN CERTIFICATES OR APPROVAL WHERE REQUIRED. ELECTRICAL CONTRACTOR SHALL VERIFY ALL WIRE AND CONDUIT SIZES FOR MECHANICAL EQUIPMENT TO BE INSTALLED.
- ALL MATERIALS FURNISHED SHALL BE NEW AND SHALL BE U.L. LISTED.
- THE DRAWINGS INDICATE SIZE AND GENERAL LOCATION OF WORK. SCALE DIMENSIONS SHALL NOT BE USED. THE EXACT LOCATION OF ALL LIGHTING FIXTURES, RECEPTACLES AND TELEPHONE OUTLETS, ETC. SHALL BE DETERMINED BY ACTUAL CONDITIONS IN THE FIELD.
- PRIOR TO BIDDING, CONTRACTOR SHALL VISIT THE JOB SITE AND FAMILIARIZE THEMSELVES WITH THE EXISTING CONDITIONS.
- ELECTRICAL CONTRACTOR SHALL COORDINATE HIS WORK WITH OTHER TRADES AND WITH OTHER CONTRACTORS WHOSE WORK MAY AFFECT THIS INSTALLATION.
- ELECTRICAL CONTRACTOR SHALL COORDINATE INCOMING ELECTRICAL SERVICE WITH UTILITY COMPANY AND INCLUDE IN HIS BID ALL CHARGES AND FEES INCURRED IN MODIFICATIONS.
- ELECTRICAL CONTRACTOR SHALL COORDINATE THE TELEPHONE INSTALLATION WITH THE TELEPHONE COMPANY AND THE GENERAL CONTRACTOR.
- ELECTRICAL CONTRACTOR, BEFORE INSTALLING ANY OF THE WORK, SHALL SEE THAT IT DOES NOT INTERFERE WITH CLEARANCES REQUIRED FOR FINISHED COLUMNS, HUNG CEILINGS, PLASTER, PARTITIONS, WALLS, ETC. AS SHOWN IN THE ARCHITECTURAL DRAWINGS AND DETAILS. IF ANY WORK IS INSTALLED AND IT LATER DEVELOPS THAT SUCH DETAILS OR DESIGN CANNOT BE FOLLOWED, THE CONTRACTOR, AT HIS OWN EXPENSE, SHALL MAKE SUCH CHANGES IN THE WORK AS DIRECTED BY THE ARCHITECT, AS WELL AS TO PERMIT THE INSTALLATION OF THE ARCHITECTURAL WORK AS SHOWN ON THE PLANS AND DETAILS.
- PERFORM TEST REQUIRED BY THE OWNER OR THE ENGINEER IN CONNECTION WITH THE OPERATION OF THE ELECTRICAL SYSTEM IN THE BUILDING. ALL TESTS SHALL BE MADE IN ACCORDANCE WITH THE LATEST STANDARD OF THE IEEE AND THE NATIONAL ELECTRICAL CODE.
- MINIMUM CONDUCTOR SIZE SHALL BE #12, 600V INSULATION.
- MINIMUM SIZE CONDUIT SHALL BE 3/4" ELECTRICAL METALLIC TUBING (EMT) FOR INTERIOR USE, 3/4" RIGID ALUMINUM FOR EXTERIOR USE ABOVE GRADE AND 1" SCHEDULE 40 PVC, BURIED A MINIMUM OF 18" FOR NON-VEHICULAR TRAFFIC AREAS, AND 3 FT IN VEHICULAR TRAFFIC AREAS. EMT SHALL BE USED WITH METAL STUD CONSTRUCTION AND ALL ASSEMBLY OCCUPANCIES. 6 FT LENGTH MC CABLE IS ALLOWED ABOVE DROPPED CEILING.
- INTERIOR FITTINGS SHALL BE CAST WHERE EXPOSED ON WALLS, AND EXTERIOR FITTINGS SHALL BE CAST BOXES WITH NEMA 3R COVER(S).
- CONTRACTOR SHALL INSTALL WIRING AND OTHER CIRCUIT COMPONENTS TO MATCH EQUIPMENT ACTUALLY INSTALLED.
- ALL 120V RUNS LONGER THAN 60 FEET SHALL BE #10 AWG AND 277V RUNS LONGER THAN 150 FEET SHALL BE #10 AWG UNLESS NOTED OTHERWISE.
- INSTALL GROUND FAULT RECEPTACLES AT RECEPTACLE LOCATIONS WITHIN 5' OF SINKS OR LAVATORIES, AND AT EXTERIOR LOCATIONS. EXTERIOR RECEPTACLES SHALL ALSO BE WATERPROOF. ALL RECEPTACLES IN A KITCHEN AREA SHALL HAVE GROUND FAULT PROTECTION.
- BONDING AND GROUNDING SHALL BE IN ACCORDANCE WITH NFPA 70:250-63, NFPA 250-23, 250-71 & 250-72.
- GROUND NEUTRAL IN ACCORDANCE WITH NFPA 70:250-23b.
- FUSES SHALL BE ITC CLASS K5, 250 VOLT, 200,000 AMP INTERRUPTING CAP.
- PROVIDE SERVICES OF A FIRE/SMOKE DETECTION AND ALARM COMPANY TO DESIGN AND INSTALL ALARM SYSTEM TO MEET REQUIREMENTS OF THE STATE FIRE MARSHAL AND THE FIRE DISTRICT IF REQUIRED.
- EXTERIOR LIGHTING SHALL BE SHADED OR INWARDLY DIRECTED IN SUCH A MANNER SO THAT NO DIRECT LIGHTING OR GLARE IS CAST BEYOND THE PROPERTY LINE. THE INTENSITY OF SUCH LIGHTING SHALL NOT EXCEED ONE FOOT CANDLE AS MEASURED AT THE ABUTTING PROPERTY LINE.
- ALL ELECTRICAL, MECHANICAL AND PLUMBING PENETRATING FIRE PARTITIONS SHALL BE FIRE CAULKED (PENETRATIONS THROUGH RATED CONSTRUCTION SHALL BE SEALED WITH A MATERIAL CAPABLE OF PREVENTING THE PASSAGE OF FLAMES AND HOT GASES WHEN TESTED IN ACCORDANCE WITH ASTM-E814).
- VERIFY ELECTRICAL CONNECTIONS PER MANUFACTURER'S RECOMMENDATIONS.
- TYPES NM AND NMC CABLES SHALL NOT BE PERMITTED TO BE EXPOSED IN DROPPED OR SUSPENDED CEILINGS.

LEGEND

- RECESSED LED LIGHT FIXTURE
- ⊕ SINGLE POLE SWITCH LIGHT SWITCH
- ⊕ VANITY LIGHT
- ⊕ DUPLEX RECEPTACLE
- ⊕ EMERGENCY LIGHT FIXTURE
- ⊕ JUNCTION BOX
- ⊕ EXIT LIGHT FIXTURE
- ⊕ EXHAUST FAN
- ↗ HOME RUN
- ALL RECEPTACLES SHALL BE TAMPER PROOF

KEYED NOTES

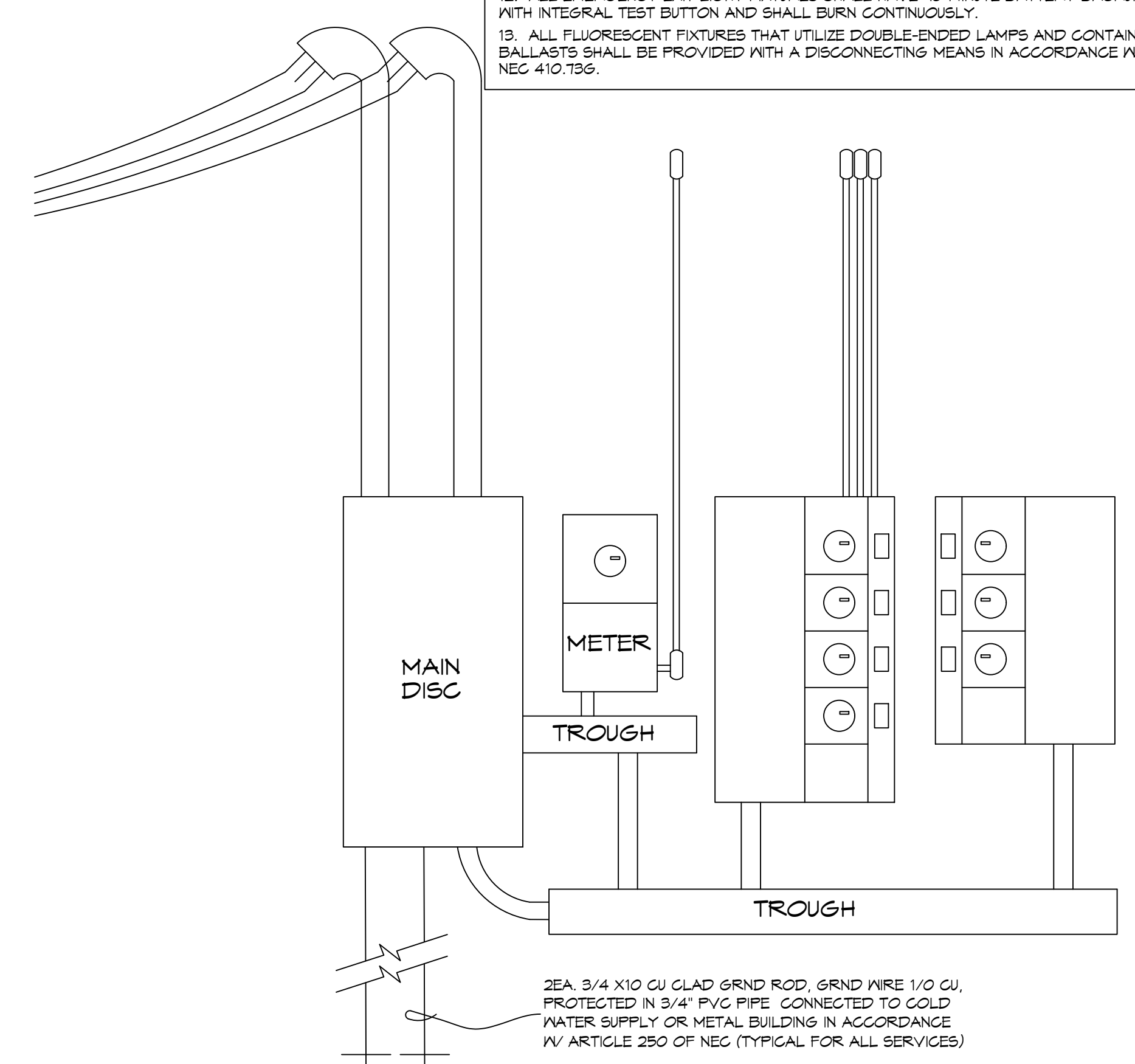
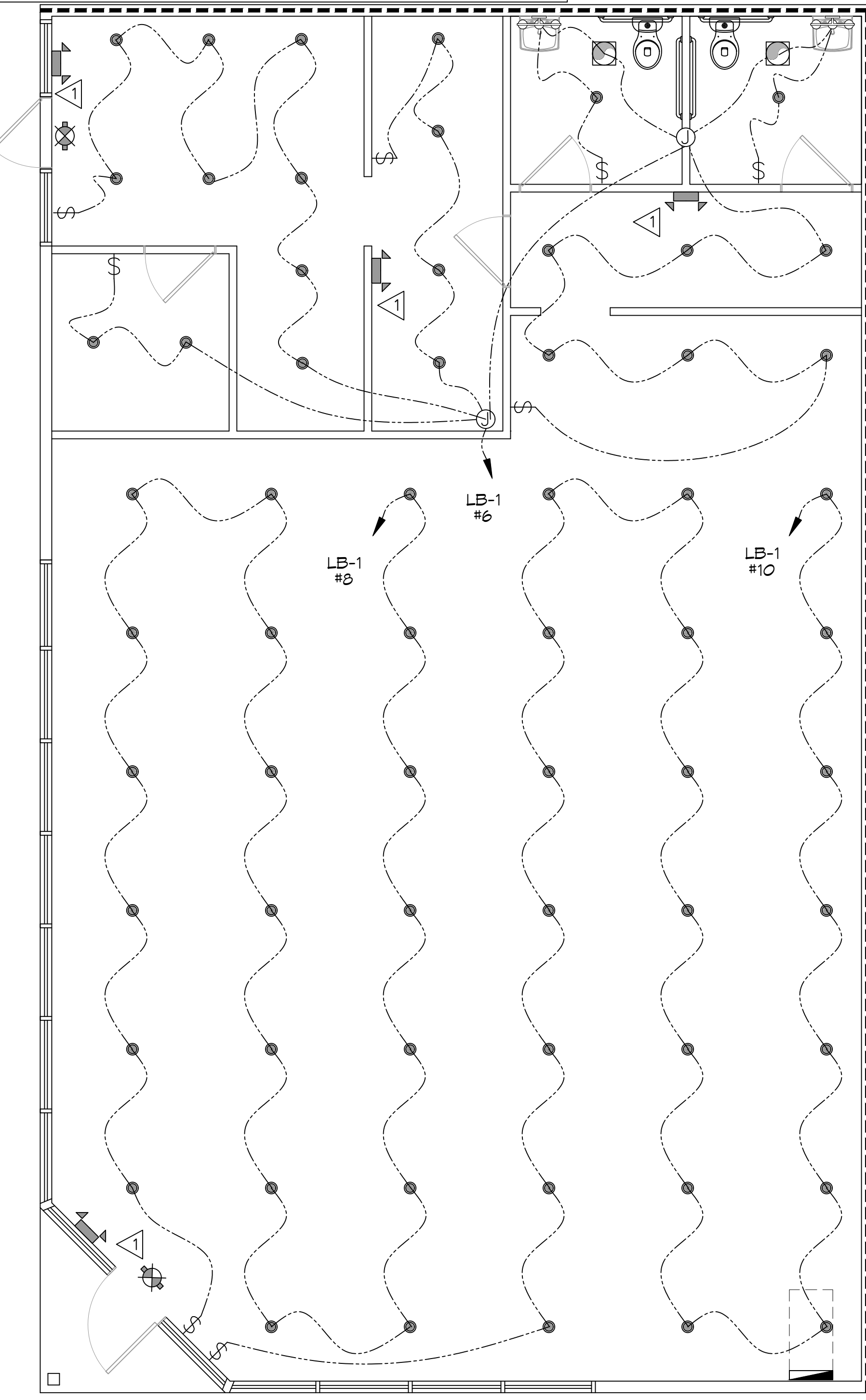
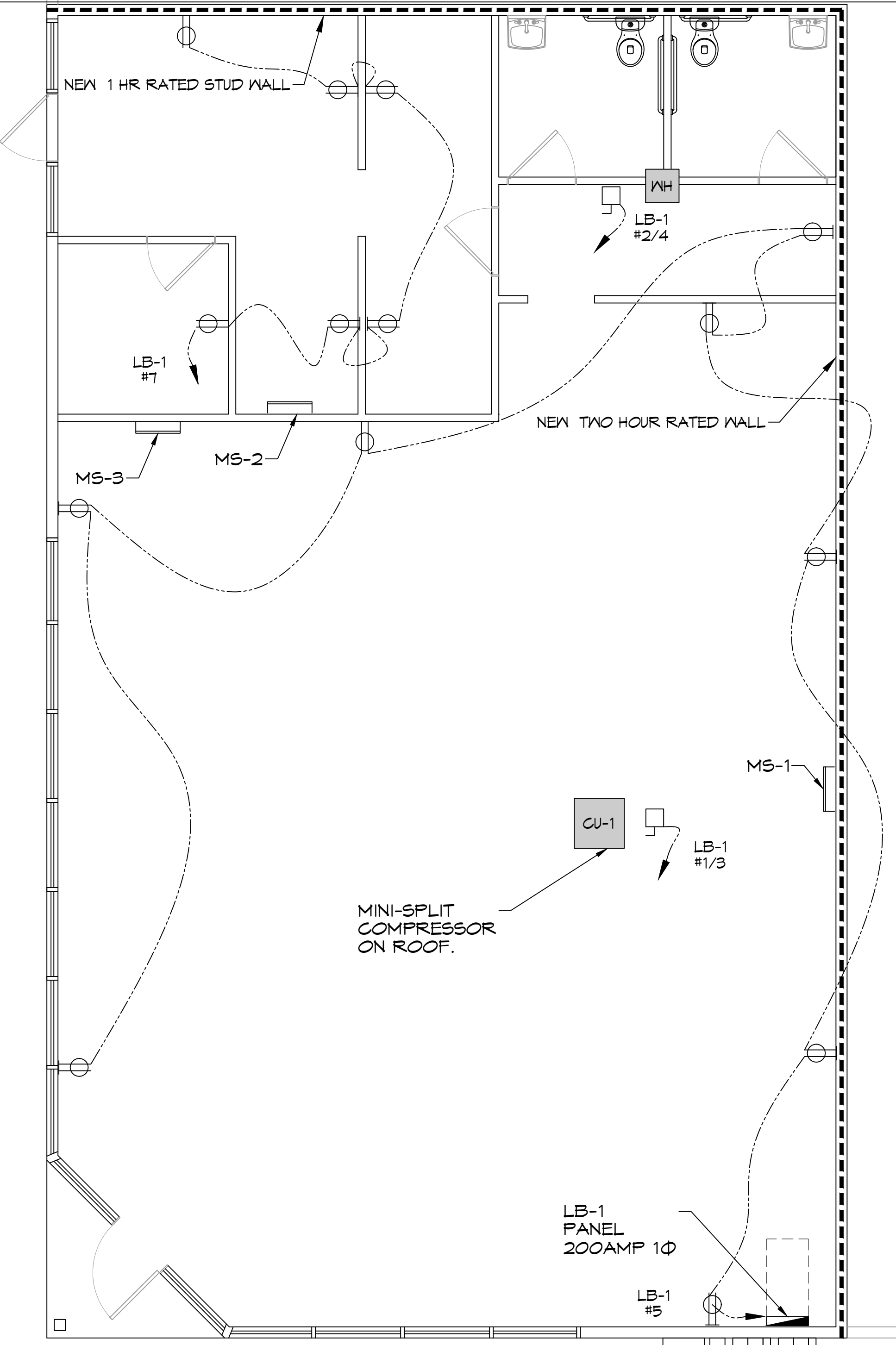
- △ PROVIDE CONNECTION TO UN-SWITCHED HOT OF LIGHTING CIRCUIT AND SHALL HAVE 90 MINUTE EMERGENCY BATTERY BACKUP.

THIS WORK SHALL MEET ALL ELECTRICAL CODES

- 2020 NATIONAL ELECTRICAL CODE
- NFPA 70
- 2021 IECC ENERGY CODE

GENERAL LIGHTING NOTES

- ALL WORK SHALL COMPLY WITH APPLICABLE NATIONAL, STATE, AND LOCAL CODES, RULES, REGULATIONS, AND REQUIREMENTS OF THE SERVICE UTILITY COMPANY.
- GENERAL CONTRACTOR SHALL NOTIFY THE ARCHITECT IMMEDIATELY IF ANY CONFLICTS OCCUR BETWEEN LIGHTING AND ANY OTHER TRADE. DO NOT PROCEED WITH INSTALLATION IN THAT AREA UNTIL CONFLICT HAS BEEN RESOLVED TO THE SATISFACTION OF THE ARCHITECT AND ENGINEER.
- REFER TO ARCHITECTURAL DRAWINGS FOR EXACT LOCATION AND MOUNTING INSTRUCTIONS FOR ALL LIGHT FIXTURES. NOTIFY THE ARCHITECT AND ENGINEER OF ANY DISCREPANCIES BETWEEN THESE PLANS AND THE ARCHITECTURAL PLANS RELATING TO QUANTITY, TYPE AND LOCATION OF DEVICES AND/OR FIXTURES.
- WHEN SPECIFIC LIGHT FIXTURE HAS BEEN SPECIFIED IN THE FIXTURE SCHEDULE, ELECTRICAL CONTRACTOR SHALL PROVIDE COMPLETE ASSEMBLY INCLUSIVE ALL PARTS AND HARDWARE TO INSURE PROPER FUNCTIONING FIXTURE.
- ALL CONDUCTORS SHALL BE A MINIMUM OF #12 AWG UNLESS NOTED OTHERWISE.
- ALL 120V RUNS LONGER THAN 60 FEET SHALL BE #10 AWG AND 277V RUNS LONGER THAN 150 FEET SHALL BE #10 AWG UNLESS NOTED OTHERWISE.
- ALL CONDUCTORS SHALL BE COPPER.
- WHERE CONDUCTOR SIZES ARE NOTED ON DRAWINGS, THAT WIRE SIZE SHALL BE THROUGH THE ENTIRE RUN UNLESS OTHERWISE NOTED.
- MOUNTED LIGHT SWITCHES 48" AFF UNLESS NOTED OTHERWISE ON ARCHITECTURAL DRAWINGS.
- WHERE MORE THAN ONE SWITCH OCCURS IN THE SAME LOCATION, THEY SHALL BE INSTALLED IN A GANG TYPE BOX UNDER ONE COVER PLATE. ALL GANGED SWITCHES SHALL HAVE A COMMON SEAMLESS FACEPLATE. EACH MULTI-GANGED BOX SHALL BE NO MORE THAN SIX (6) SWITCHES WIDE. WHERE MORE THAN SIX (6) SWITCHES ARE SHOWN AT ONE (1) LOCATION, ADDITIONAL MULTI-GANGED BOXES SHALL BE STACKED VERTICALLY AND THE WIDTH OF THE MULTI-GANGS SHALL BE AS EVEN AS POSSIBLE.
- EACH DIMMER SWITCH SHALL HAVE A WATTAGE RATING 25% HIGHER THAN THE TOTAL WATTAGE OF ALL LIGHTS TO BE CONTROLLED BY THE DIMMER. DIMMER SIZES 600, 1000, 1500, AND 2000 WATTS LUTRON NOVA T-STAR. WHERE SWITCHES ARE GANGED WITH DIMMERS, THE SWITCHES SHALL ALSO BE LUTRON NOVA T-STAR. FLUORESCENT AND LOW VOLTAGE DIMMERS SHALL BE LUTRON NOVA T-STAR.
- WHERE FLUORESCENT FIXTURES ARE SHOWN TO BE DIMMED, THE FIXTURES SHALL HAVE DIMMING TYPE BALLASTS WHICH ARE COMPATIBLE WITH THE SPECIFIED DIMMERS.
- WHERE LED FIXTURES/LAMPS ARE SHOWN TO BE DIMMED, THE DIMMER SHALL BE COMPATIBLE WITH THE FIXTURE/LAMP SPECIFIED OR PROVIDED.
- ALL EMERGENCY EXIT LIGHT FIXTURES SHALL HAVE 90 MINUTE BATTERY BACKUP WITH INTEGRAL TEST BUTTON AND SHALL BURN CONTINUOUSLY.
- ALL FLUORESCENT FIXTURES THAT UTILIZE DOUBLE-ENDED LAMPS AND CONTAIN BALLASTS SHALL BE PROVIDED WITH A DISCONNECTING MEANS IN ACCORDANCE WITH NEC 410.79b.



EXISTING ONE LINE DIAGRAM
SCALE: 1/2" = 1'-0"

PANEL SCHEDULE										
PANEL NO.	WIRE SIZE	LOAD DESCRIPTION	BREAKER AMP	POLE	LOAD (VA)	AS BS GS	LOAD (VA)	BREAKER AMP	POLE	LOAD (VA)
1	#10	CU#1 200AMP MINI-SPLIT	50	2	30	1 2	20	2	50	HOT WATER HEATER #10
2	-	SPARE	20	1	30	-	20	1	20	SPARE
3	#12	OUTLETS	20	1	15	-	08	1	20	LIGHTS #12
4	#12	OUTLETS	20	1	11	-	08	1	20	LIGHTS #12
5	-	SPARE	20	1	-	-	09	1	20	LIGHTS #12
6	-	SPARE	20	1	-	-	-	1	20	SPARE
7	-	SPARE	20	1	-	-	-	1	20	SPARE
8	-	SPARE	20	1	-	-	-	1	20	SPARE
9	-	SPARE	20	1	-	-	-	1	20	SPARE
10	-	SPARE	20	1	-	-	-	1	20	SPARE
11	-	SPARE	20	1	-	-	-	1	20	SPARE
12	-	SPARE	20	1	-	-	-	1	20	SPARE
13	-	SPARE	20	1	-	-	-	1	20	SPARE
14	-	SPARE	20	1	-	-	-	1	20	SPARE
15	-	SPARE	20	1	-	-	-	1	20	SPARE
16	-	SPARE	20	1	-	-	-	1	20	SPARE
17	-	SPARE	20	1	-	-	-	1	20	SPARE
18	-	SPARE	20	1	-	-	-	1	20	SPARE
19	-	SPARE	20	1	-	-	-	1	20	SPARE
20	-	SPARE	20	1	-	-	-	1	20	SPARE
21	-	SPARE	20	1	-	-	-	1	20	SPARE
22	-	SPARE	20	1	-	-	-	1	20	SPARE
23	-	SPARE	20	1	-	-	-	1	20	SPARE
24	-	SPARE	20	1	-	-	-	1	20	SPARE
25	-	SPARE	20	1	-	-	-	1	20	SPARE
26	-	SPARE	20	1	-	-	-	1	20	SPARE
27	-	SPARE	20	1	-	-	-	1	20	SPARE
28	-	SPARE	20	1	-	-	-	1	20	SPARE
29	-	SPARE	20	1	-	-	-	1	20	SPARE
30	-	SPARE	20	1	-	-	-	1	20	SPARE

DAMMON ENGINEERING, INC.
LOUISIANA & MISSISSIPPI

www.dammonengineering.com
info@dammon.com
PH: 985.649.5832

State Engineer: Brian Mutch, PE
State License No. 37884
Sulphur, LA 70688

#	DESCRIPTION	DATE

SEAL: **RICKEY JOHN KASTNER, JR.**
LICENSE NO. 37884
PROFESSIONAL ENGINEER
ELECTRICAL ENGINEERING
06/04/2025

SUITE A+B RETAIL STRIP
NORTON EARHEART

3102 FERN ST.
NEW ORLEANS, LA 70125
JOB No: 09-01-2025
DATE: 09-01-2025
DRAWN BY: BAW
CHECKED BY: C&D

SHEET TITLE:
POWER & MECHANICAL PLAN & LIGHTING PLAN

DRAWING NUMBER:
E101

SHEET No: 6 of 6