

DAMMON
ENGINEERING, INC.

CHIEF ENGINEER
EMMETT
DAMMON, P.E.

CHIEF ARCHITECT
ROBERT
WILTSE

554 OLD SPANISH TRAIL
SLIDELL, LA. 70458
OFFICE: 985-649-5832
FAX: 985-641-5950

WEBSITE:
WWW.DAMMONENGINEERING.COM

EMAIL:
DAMMONENG@BELLSOUTH.NET

ARCHITECTURE
ENGINEERING
STUDIES
PLANNING
INVESTIGATION
EXPERT WITNESS

BRIAN FONG, M.D. Inc.
MEDICAL OFFICE
2965 GAUSE BLVD.
SLIDELL, LA

POWER
PLAN

REV:

SCALE: AS NOTED

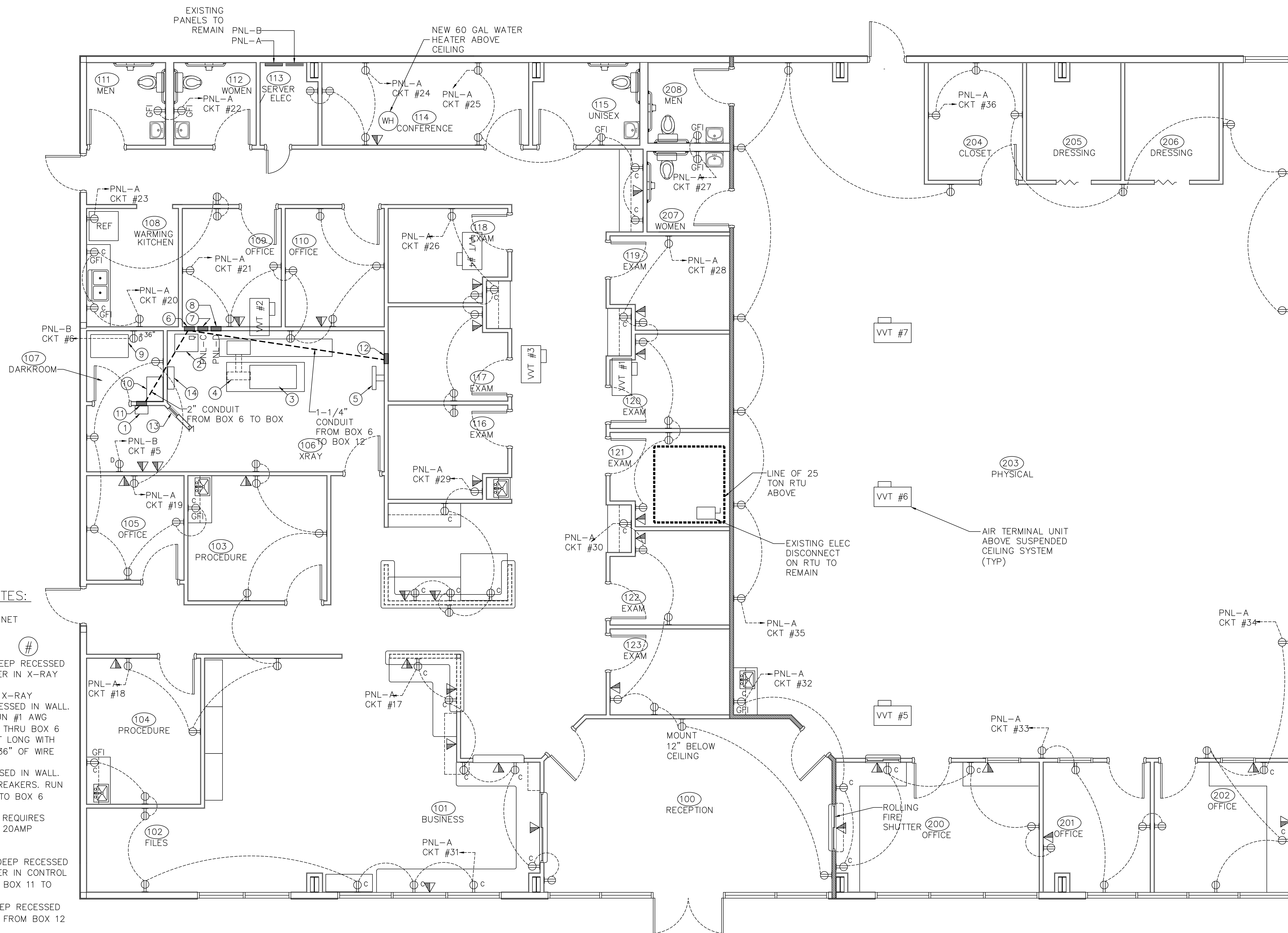
JOB#: 2132

DATE: 04-17-12

SHEET 8

E-1

OF 12



X-RAY EQUIPMENT NOTES:

1. OPERATOR CONSOLE
2. GENERATOR ELECTRONICS CABINET
3. TABLE
4. X-RAY TUBE
5. WALL BUCKY
6. ELECTRICAL BOX 12"x12"x4" DEEP RECESSED IN WALL WITH REMOVABLE COVER IN X-RAY ROOM
7. MAIN 240V AC SINGLE PHASE X-RAY GENERATOR POWER PANEL RECESSED IN WALL FROM BOTTOM OF BREAKER, RUN #1 AWG WIRES (AS PER SPECIFICATION) THRU BOX 6 INTO 90° FLEXIBLE CONDUIT 3FT LONG WITH 1-1/2" CONNECTOR. APPROX. 36" OF WIRE OUT END OF CONDUIT.
8. AUXILIARY POWER BOX RECESSED IN WALL. SUPPLY (3) 115V AC 20AMP BREAKERS. RUN 1-1/2" CONDUIT FROM BOX 8 TO BOX 6 EMPTY.
9. FILM PROCESSOR. PROCESSOR REQUIRES COLD WATER SUPPLY, 115V AC 20AMP DEDICATED POWER, AND DRAIN
10. FILM BIN
11. ELECTRICAL BOX 12"x12"x4" DEEP RECESSED IN WALL WITH REMOVABLE COVER IN CONTROL BOOTH. RUN 2" CONDUIT FROM BOX 11 TO BOX 6
12. ELECTRICAL BOX 6"x6"x3" DEEP RECESSED IN WALL. RUN 1-1/4" CONDUIT FROM BOX 12 TO BOX 6
13. CONTROL BOOTH WINDOW WITH LEAD GLASS
14. WALL CASSETTE HOLDER 14"x36"
15. DEDICATED 115V AC 20A RECEPTACLE
16. TWO EA. NETWORK DROPS, ONE TELEPHONE
17. ELECTRICAL CONTRACTOR TO CONTACT MANUFACTURER AND VERIFY CORRECT VOLTAGE FOR PROPER FUNCTION AND PROVIDE ANY NECESSARY TRANSFORMERS AND SPECIALTY ELECTRICAL ITEMS TO PROVIDE A COMPLETE X-RAY SYSTEM.

POWER PLAN

SCALE: 1/4"=1'-0"

NOTE:
SEE SHEET E-3 FOR POWER PLAN LEGEND,
PANEL SCHEDULES, AND ELECTRICAL NOTES.