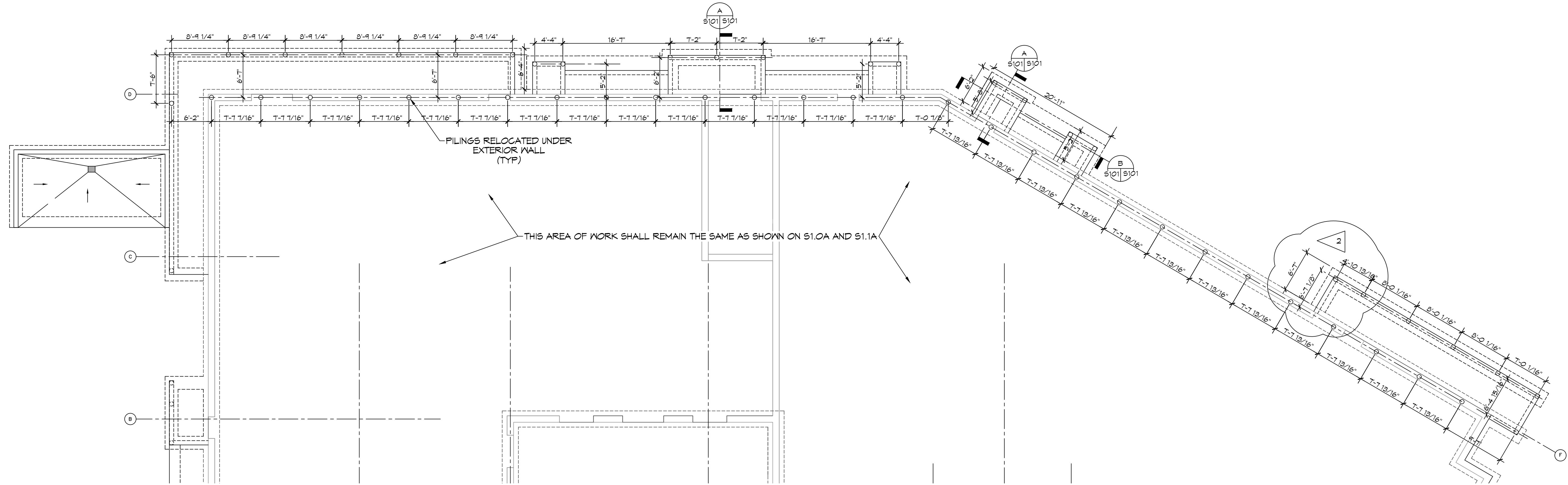


THIS PARTIAL PILING PLAN REPLACES SHEET S1.0A & S1.1A REAR OF BLDG ONLY



PARTIAL PILING PLAN
SCALE: 1/8" = 1'-0"

DAMMON ENGINEERING, INC.
LOUISIANA & MISSISSIPPI

Chief Engineer: Brian Mistich, PE
554 Old Spanish Trail
Sibley, LA 70468
www.dammonengineering.com
info@dammonengineering.com
PH: 985.649.9332

#	DESCRIPTION	DATE
1	REVISED FROM 8" TO 12" PILE	03-23-26
2	RELOCATED 3/8" PAD	03-23-26



BUILDING (A) SHELL
VILLAGE OF EDEN OAK

PARCEL 14-1
SILDELL, LA, 70469
JOB No: 2026 | DATE: 01-20-2026
DRAWN BY: BAW | CHECKED BY: CKD

SHEET TITLE:
PARTIAL PILING PLAN FOR REAR FOOTING AND STAIR LANDINGS ONLY.

DRAWING NUMBER:
S101

SHEET No: 1 of 1