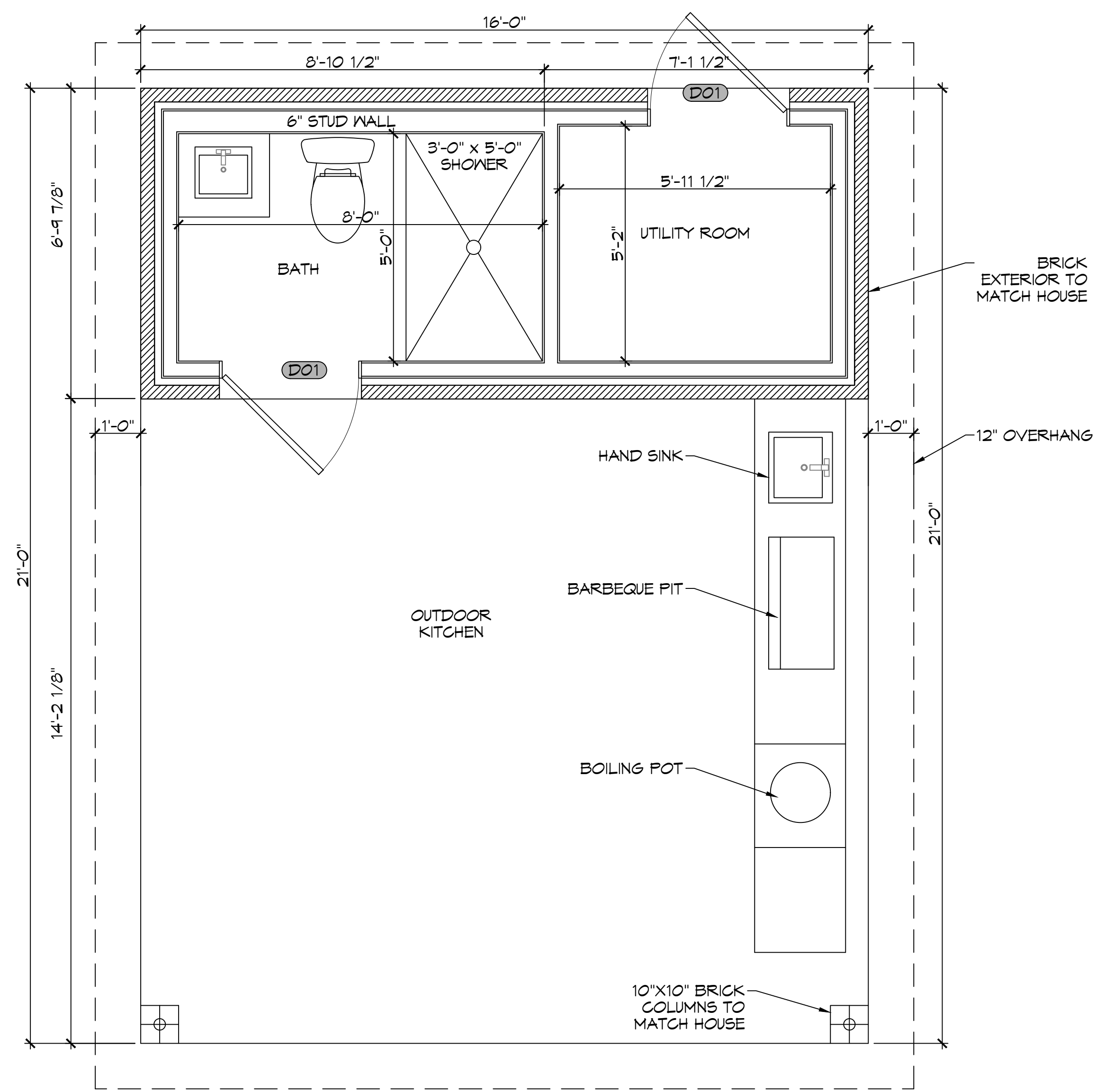


E.E. DAMMON, P.E., ENGINEER OF STRUCTURE, 51 JULIA, SUITE 200B, MONROE, LOUISIANA 70139, WEISSER, BOSS, SMITH, AND ASSOCIATES, INC., 1001 PINE BLVD., SUITE 200, MONROE, LOUISIANA 70139, PH: 985.649.5832

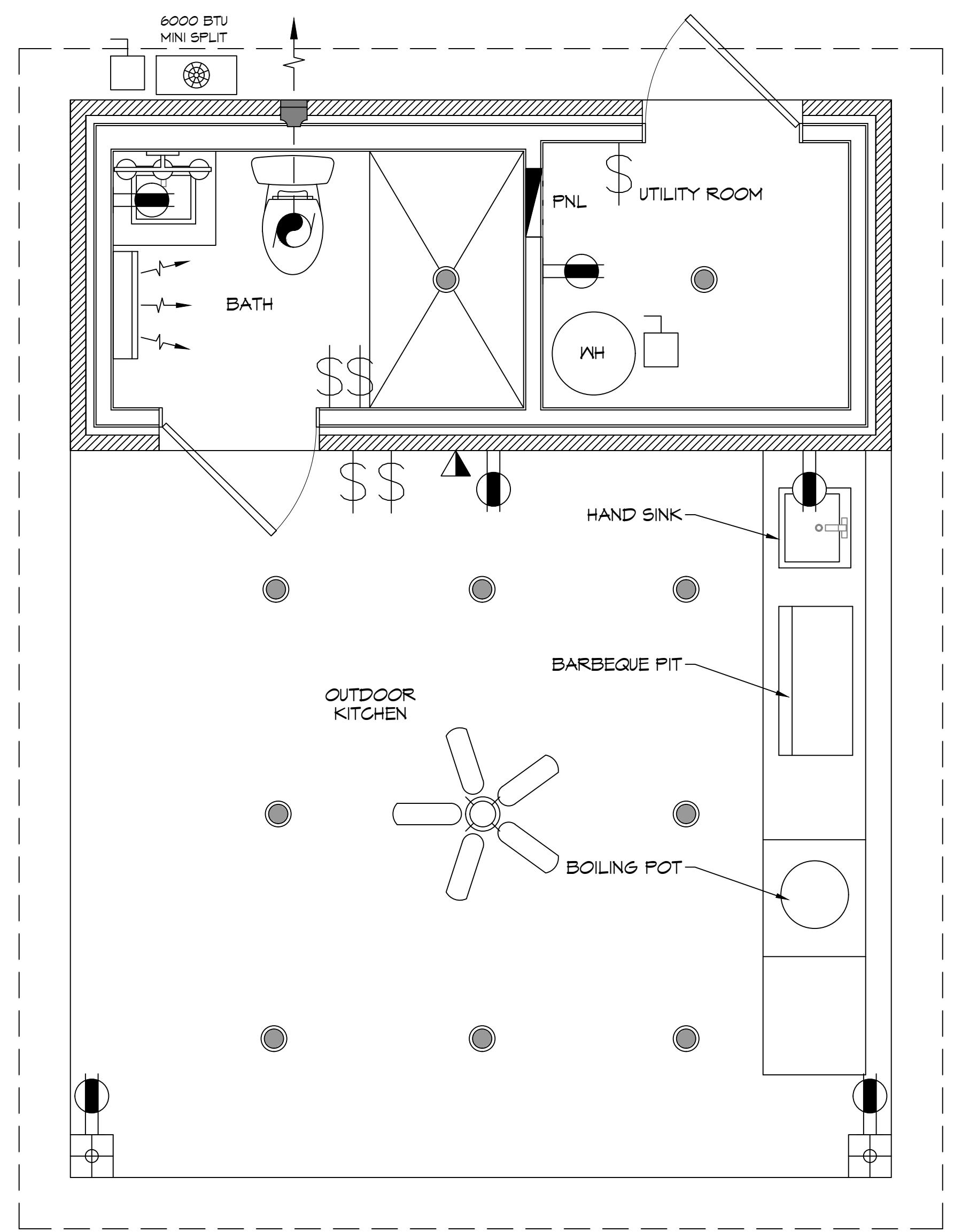
SQUARE FEET	
1/2 BATH	103
COVERED PORCH	233
TOTAL SQ. FT.	336

DOOR SCHEDULE						
MK	WIDTH	HEIGHT	THK	DOOR MAT	FRAME MAT	NOTES
D01	3'-0"	6'-8"	1-3/4"	WOOD	WOOD	EXTERIOR DOOR

NOTE: ALL EXTERIOR WINDOWS AND DOORS ASSEMBLES TO BE RATED FOR 140 MPH WINDS AND SHALL BE MISSILE IMPACT RESISTANT.



1 FLOOR PLAN
SCALE: 1/2" = 1'-0"



2 ELECTRICAL FLOOR PLAN
SCALE: 1/2" = 1'-0"

DAMMON
ENGINEERING, INC.
 LOUISIANA & MISSISSIPPI

Chief Engineer: Brian Misch, PE
 554 Old Spanish Trail
 Slidell, LA 70458
 www.dammonengineering.com
 info@dammonengineering.com
 PH: 985.649.5832

#	DESCRIPTION	DATE

NEW POOL HOUSE
E L I S T . J U L I E N
 57626 VINEGRA ROAD
 SLIDELL, LA 70460
 JOB No: 02-24-202B
 DRAWN BY: SCKL
 CHECKED BY: CKD
 DATE: 02-24-202B

SHEET TITLE:
 FLOOR PLAN
 DRAWING NUMBER:
A101
 SHEET No: 1 of 4