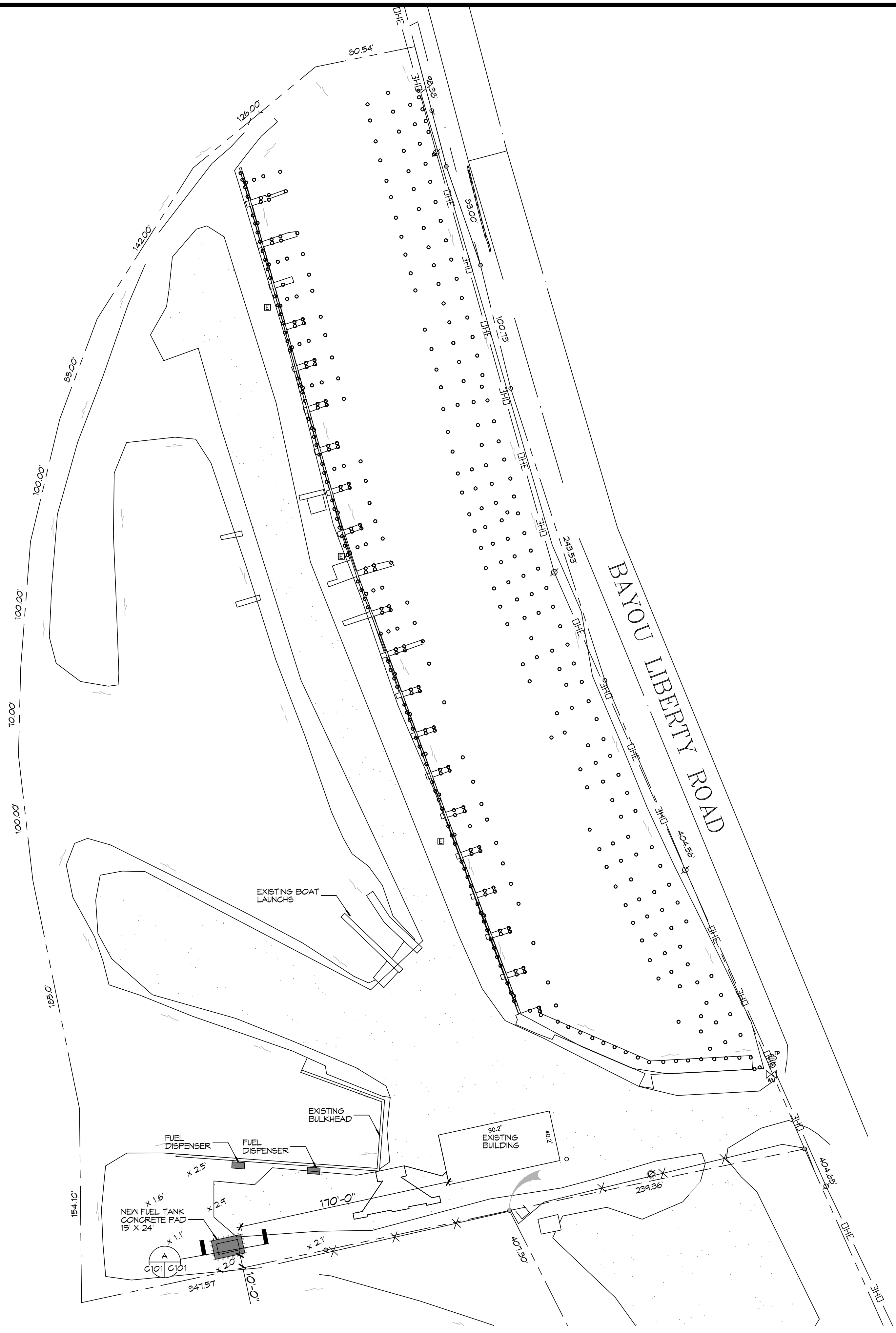
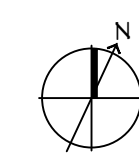
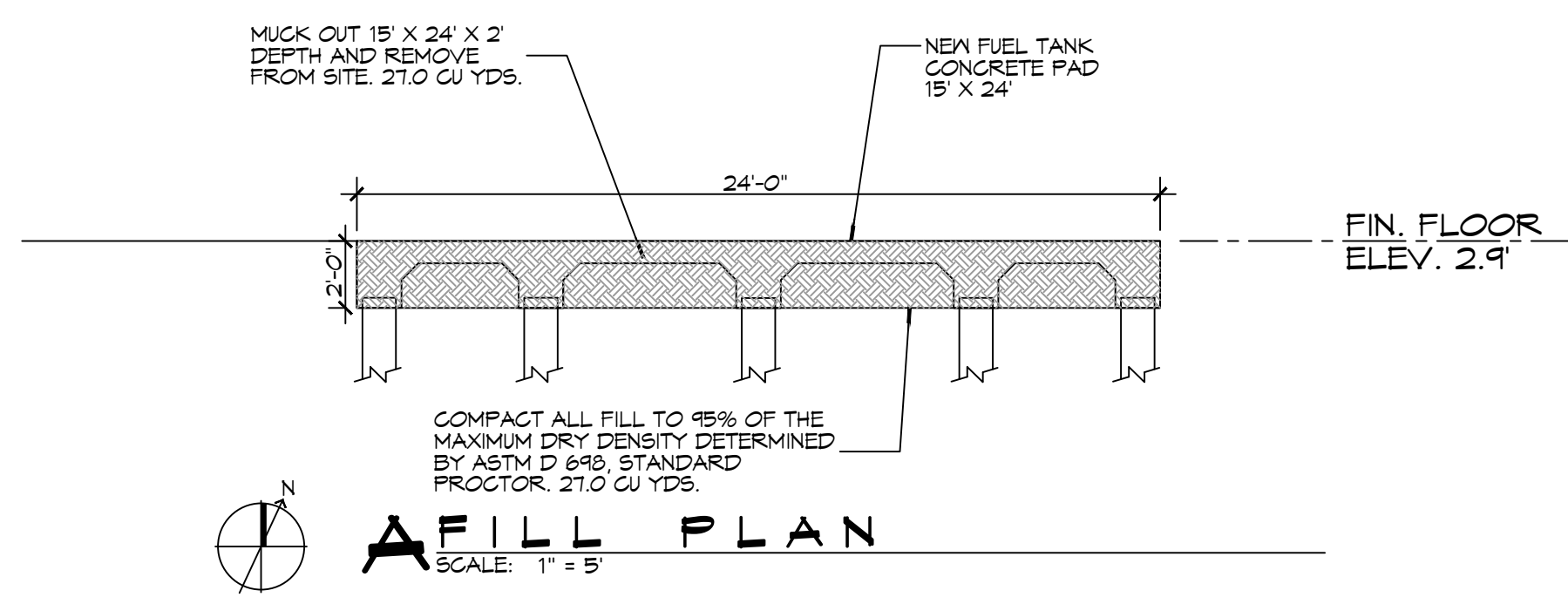


D.E. M&E, A.C. Foundation of Louisiana Civil Engineers, Inc. 504.885.1111, www.dammoneengineering.com, info@dammoneengineering.com, 554 Old Spanish Trail, Slidell, LA 70458, PH: 985.649.5832

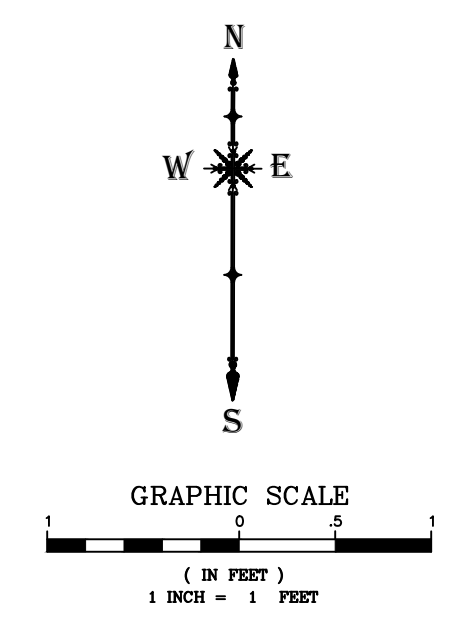
BAYOU LIBERTY



1 PROPOSED FUEL TANK SITE PLAN
SCALE: 1" = 50'-0"



A-FILL PLAN
SCALE: 1" = 5'

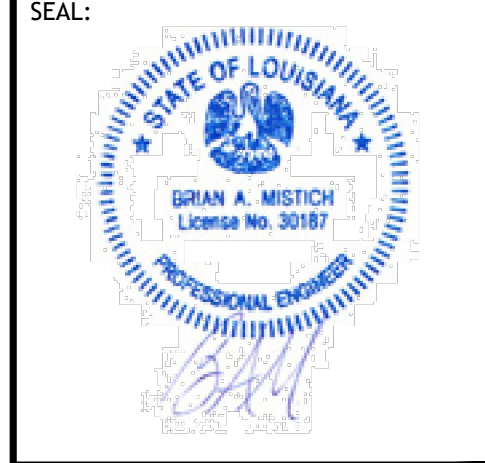


GRAPHIC SCALE
(IN FEET)
1 INCH = 1 FEET

ZONING	
PF-3 PUBLIC FACILITY	
DESIGN CRITERIA	
THE CONSTRUCTION FOR SAID RESIDENCE, WHERE BASIC WIND SPEED IS 140 MILES PER HOUR, WIND EXPOSURE ZONE C, IS DESIGNED IN ACCORDANCE WITH: AMERICAN FOREST AND PAPER ASSOCIATION (AF&PA) WOOD FRAME CONSTRUCTION MANUAL FOR ONE AND TWO FAMILY DWELLINGS (WFDM) 2001 EDITION AS WELL AS THE INTERNATIONAL RESIDENTIAL CODE (IRC) 2021 EDITION.	
SHEET INDEX	
SHEET #	SHEET TITLE
C101	PROPOSED FUEL TANK SITE PLAN AND FILL PLAN
S101	FUEL TANK FOUNDATION PLAN

DAMMON
ENGINEERING, INC.
 LOUISIANA & MISSISSIPPI
 Chief Engineer: Brian Mistich, PE
 554 Old Spanish Trail
 Slidell, LA 70458
 www.dammoneengineering.com
 info@dammoneengineering.com
 PH: 985.649.5832

#	DESCRIPTION	REVISIONS	DATE



NEW FUEL TANK FOUNDATION
FOGGY WATERS MARINA
 56041 LA-489
 BAYOU LIBERTY ROAD
 SLIDELL, LA 70460
 JOB No: 2024
 DATE: 12-16-2024
 DRAWN BY: CKD
 CHECKED BY: BAY

SHEET TITLE:
 PROPOSED FUEL TANK
 SITE PLAN AND FILL PLAN
 DRAWING NUMBER:
C101
 SHEET No: 1 of 2