

Standard Loading Criteria:

Floor Loading (non-bedroom): 40 psf Live / 10 psf Dead
 Sleeping Rooms: 30 psf Live / 10 psf Dead
 Attic/Ceiling Light Storage: 20 psf Live / 10 psf Dead
 Attic/Ceiling No Storage: 10 psf Live / 8 psf Dead
 Roof Loading: 20 psf Live / 15 psf Dead

Loading Durations: 100% Floor / 125% Roof

Roof Live Loads may be reduced due to pitch and tributary area per CABO Table R301.5

(Where applicable)
 Conventional Roof System assumes Ceiling Joist direction as code prescribed. All loading to be associated with bearing locations.

(Where applicable)
 Compression Roof applied to structure assumes adequate thrust resistance by Rafter connection to Bearing Plate and Floor Diaphragm. ***Floor must be fully sheathed***

Builder to verify the loading criteria listed is in accordance with local building code requirements. Floor dead loads are based on carpet, hardwood or vinyl. Roof dead loads are based on asphalt-shingle and stick built roofs only. Tile, marble, slate, brick, stone etc will increase dead load requirements. It is the Builders responsibility to notify of any increased dead loads other than those listed.

Products other than Boise Engineered Wood Products may be called out to represent transferring load paths through the structure only (Ic)...Steel Beams, Headers/2 x Lumber (BBO), Dropped Sills or Girders, Posts, or Framing/Squash blocks. Consult local building codes for specific product requirements in these instances.

Refer to Boise Manufacturer's Installation Guide for additional information of product installation, connection and nailing requirements.

All accessories are provided by others.

F56 Exterior Wood Sheathing - 1/2" dia through bolts (ASTM A307 Grades A49, SAE J429 Grades 1 or 2, or higher) with washers and nuts or 1/2" dia lag screws (full penetration) @ 50 lb capacity per fastener.

F58-B Double BC Joist Connection - Backer and Flange Connections. Includes table for member sizes and fastener requirements.

F05 23/32" min. plywood OSB or rimboard closure. Nail with 8d nails into each flange.

F16-D Backer Block - 1/4"-2" gap. Includes "Top Mount" and "Face Mount" details.

F06 Load bearing wall above (stacked over wall below). BC Joist Blocking - See Boise literature for vertical load capacity.

F13-G Web Stiffener Fastener Schedule - Table with columns for Joist Size, Depth, Spacing, and Bearing Location.

F07 See Boise literature for vertical load capacity. Boise Rimboard - Nail Boise Rimboard to BC Joist with 8d nail into each flange.

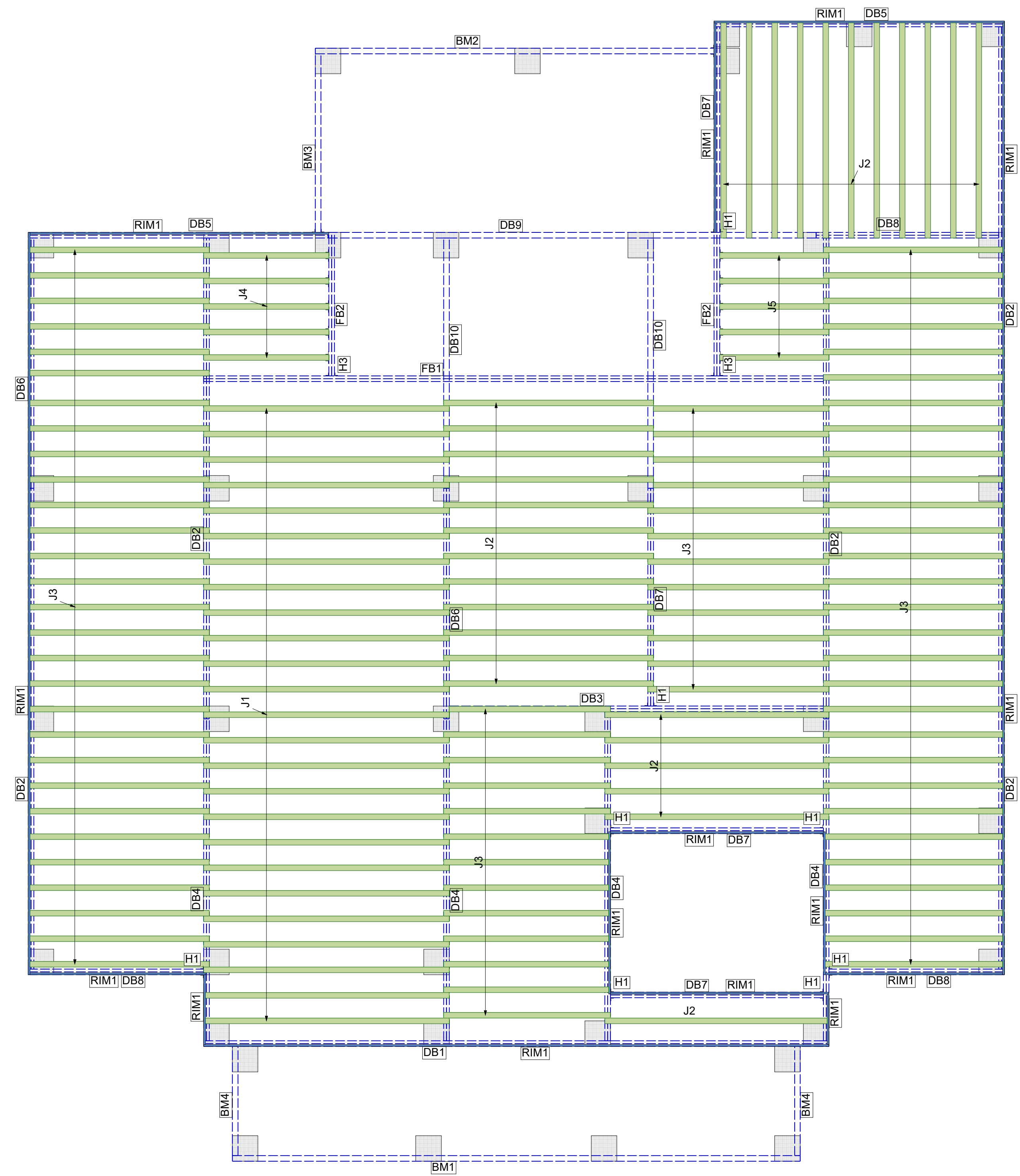
B12-B Side Loaded Connection - Double 8' wide 1.3/4" Versa-Lam® 1/2" dia. Bolt (b). Includes table for member sizes and bolt spacing.

F08 Solid block all posts from above to bearing below.

B10-C Multi-Ply 1.3/4" Versa-Lam® - TrussLoK® Connection - 2 rows @ 12" o.c. Includes diagram showing 2, 3, and 4 ply configurations.

DN01 DO NOT cut, notch or drill flanges.

DJ-A Note: Sheathing shall not span greater than rafter. Boise I-Joist can be offset up to 3" to avoid vertical plumbing.



PRELIMINARY LAYOUT FOR QUOTING PURPOSES

NOT FOR CONSTRUCTION

Connector Summary

PlotID	Qty	Manuf	Product
H1	10	Simpson	HHUS410
H2	10	Simpson	THA422
H3	2	Simpson	HU416

Products

PlotID	Net Qty	Product	Length	Plies
J1	25	16" Trim Joist	14' 0"	1
J2	29	16" Trim Joist	12' 0"	1
J3	83	16" Trim Joist	10' 0"	1
J4	5	16" Trim Joist	8' 0"	1
J5	5	16" Trim Joist	6' 0"	1
DB1	2	1-3/4" x 11-1/4" VERSA-LAM® LVL 2.1E 3100 SP	34' 0"	2
DB2	10	1-3/4" x 11-1/4" VERSA-LAM® LVL 2.1E 3100 SP	26' 0"	2
DB3	2	1-3/4" x 11-1/4" VERSA-LAM® LVL 2.1E 3100 SP	20' 0"	2
DB4	8	1-3/4" x 11-1/4" VERSA-LAM® LVL 2.1E 3100 SP	18' 0"	2
DB5	4	1-3/4" x 11-1/4" VERSA-LAM® LVL 2.1E 3100 SP	16' 0"	2
DB6	4	1-3/4" x 11-1/4" VERSA-LAM® LVL 2.1E 3100 SP	14' 0"	2
DB7	8	1-3/4" x 11-1/4" VERSA-LAM® LVL 2.1E 3100 SP	12' 0"	2
DB8	6	1-3/4" x 11-1/4" VERSA-LAM® LVL 2.1E 3100 SP	10' 0"	2
FB1	2	1-3/4" x 16" VERSA-LAM® LVL 2.1E 3100 SP	34' 0"	2
FB2	4	1-3/4" x 16" VERSA-LAM® LVL 2.1E 3100 SP	8' 0"	2
BM1	1	3 1/2" x 11 1/4" Treated Glulam	30' 0"	1
DB9	1	3 1/2" x 11 1/4" Treated Glulam	26' 0"	1
BM2	1	3 1/2" x 11 1/4" Treated Glulam	22' 0"	1
DB10	2	3 1/2" x 11 1/4" Treated Glulam	14' 0"	1
BM3	1	3 1/2" x 11 1/4" Treated Glulam	10' 0"	1
BM4	2	3 1/2" x 11 1/4" Treated Glulam	6' 0"	1
RIM1	19	1-1/8" x 16" BC RIM BOARD OSB	12' 0"	1

Revisions: | BY:

Boise Cascade

NOTE: ALL MEASUREMENTS TO BE VERIFIED IN THE FIELD.

SALES PRESENTATION DRAWING

218 Marlin
84 Lumber Gulfport

BC FRAMER
25-750
Scale: as noted

Date: 9-2-2025

By: th

Pages dated 5-23-2025

DWG: Preliminary

Sheet: 1/2

2ND FLOOR FRAMING PLAN
 1/4" = 1'-0"