

**SITE SPECIFIC NOTES:**

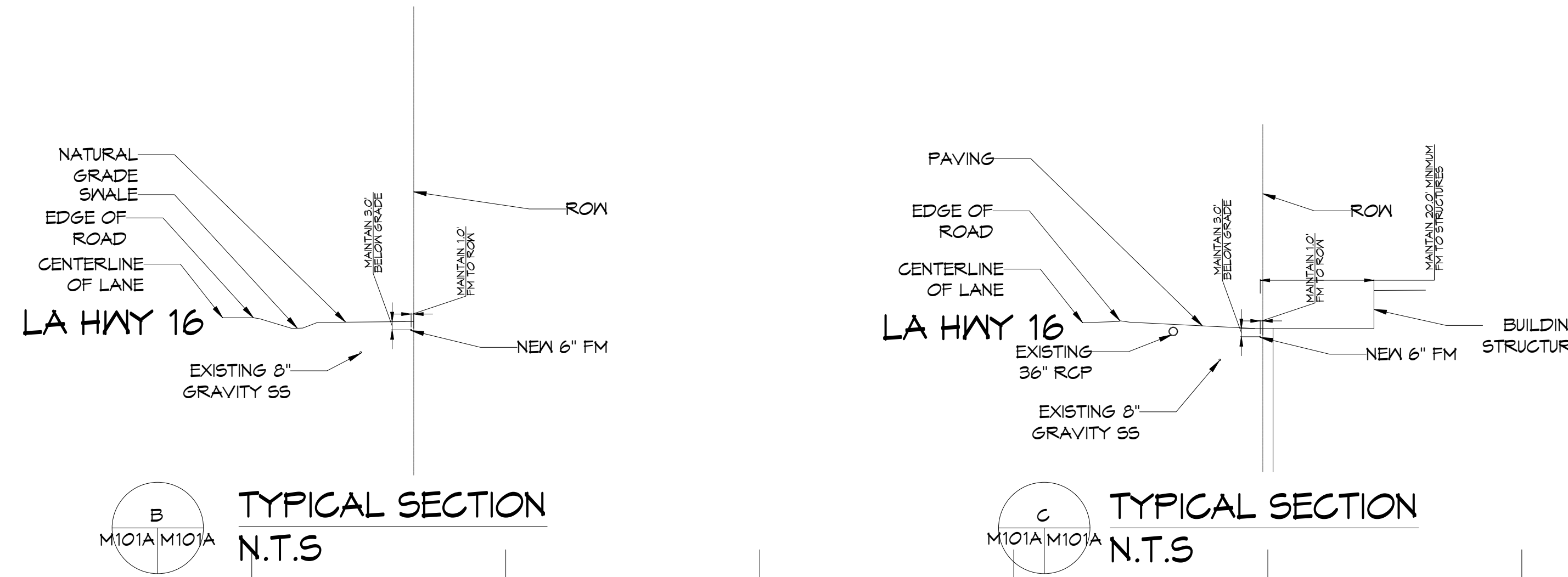
1. AN LA LICENSED SURVEYOR SHALL PIN THE SOUTHERN RIGHT OF WAY (ROW) OF HWY 16 BETWEEN THE ACCESS RD FOR INTERSTATE I-55 AND PULESTON ROAD.
2. CONTRACTOR SHALL TRENCH OR HORIZONTALLY DIRECTIONAL DRILL (BORE) 6" HDPE FORCE MAIN ALONG THE SOUTHERN ROW FOR HWY 16 BETWEEN THE LIFT STATION NEAR THE ACCESS RD FOR INTERSTATE I-55 AND PULESTON ROAD. THE FORCE MAIN SHALL BE PLACED APPROXIMATELY ONE (1) FOOT WITHIN LA HWY 16 ROW AND SHALL BE A MINIMUM OF 3 FT BELOW GRADE.
3. CONTRACTOR SHALL UTILIZE METHODS IN ACCORDANCE WITH THE LATEST EDITION OF LA DOTD STANDARD SPECIFICATION FOR ROADS AND BRIDGES.

**LEGEND**

- FM 6" FORCE MAIN
  - SS GRAVITY FED SEWER
  - ⊙ POWER POLE
  - ⊙ SANITARY SEWER MAN HOLE
  - X EXISTING ELEVATION
- STA=0+00 STATION #  
EL=101.1' ELEVATION

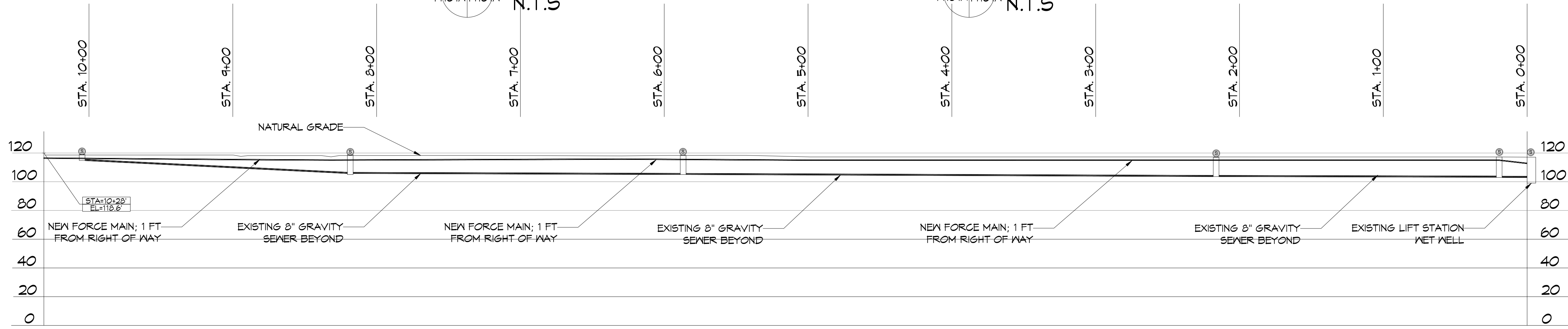
**ABBREVIATIONS**

- CMP = CORRUGATED METAL PIPE
- EOR = EDGE OF ROAD
- FM = FORCE MAIN
- HWY 16 = LA STATE HIGHWAY 16
- I-55 = INTERSTATE 55
- RCP = ROUND CORRUGATED PIPE
- RPCA = ROUND CORRUGATED PIPE-ARCH
- ROW = RIGHT OF WAY

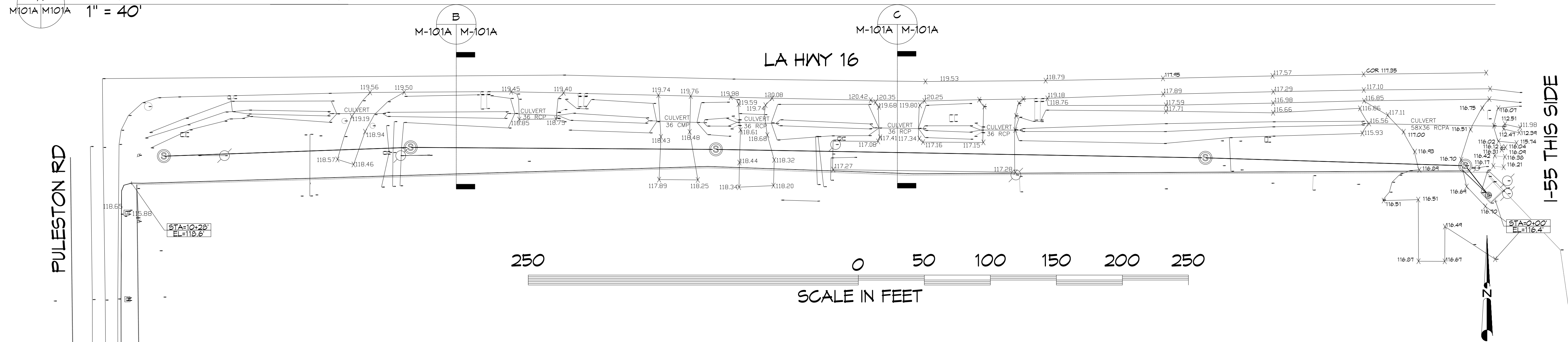


PULESTON RD THIS SIDE

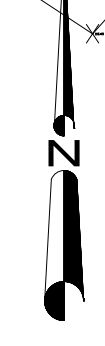
I-55 THIS SIDE



**FORCE MAIN PARTIAL PROFILE**  
1" = 40'



**FORCE MAIN PARTIAL SITE PLAN**  
1" = 40'



**DAMMON ENGINEERING, INC.**  
LOUISIANA & MISSISSIPPI

Chief Engineer: Brian Mistich, PE  
554 Old Spanish Trail  
Slidell, LA 70458  
www.dammonengineering.com  
info@dammonengineering.com  
PH: 985.649.5832

REVISIONS	DATE

SEAL:

**NEW FORCE MAIN**  
**TANGIPAHOA PARISH LANDFILL**

ANYTE CITY, LA  
JOB No: 2440 DATE: 5-5-2024  
DRAWN BY: DPD CHECKED BY: BMY

SHEET TITLE:  
**FORCE MAIN HWY 16**

DRAWING NUMBER:  
**M101A**