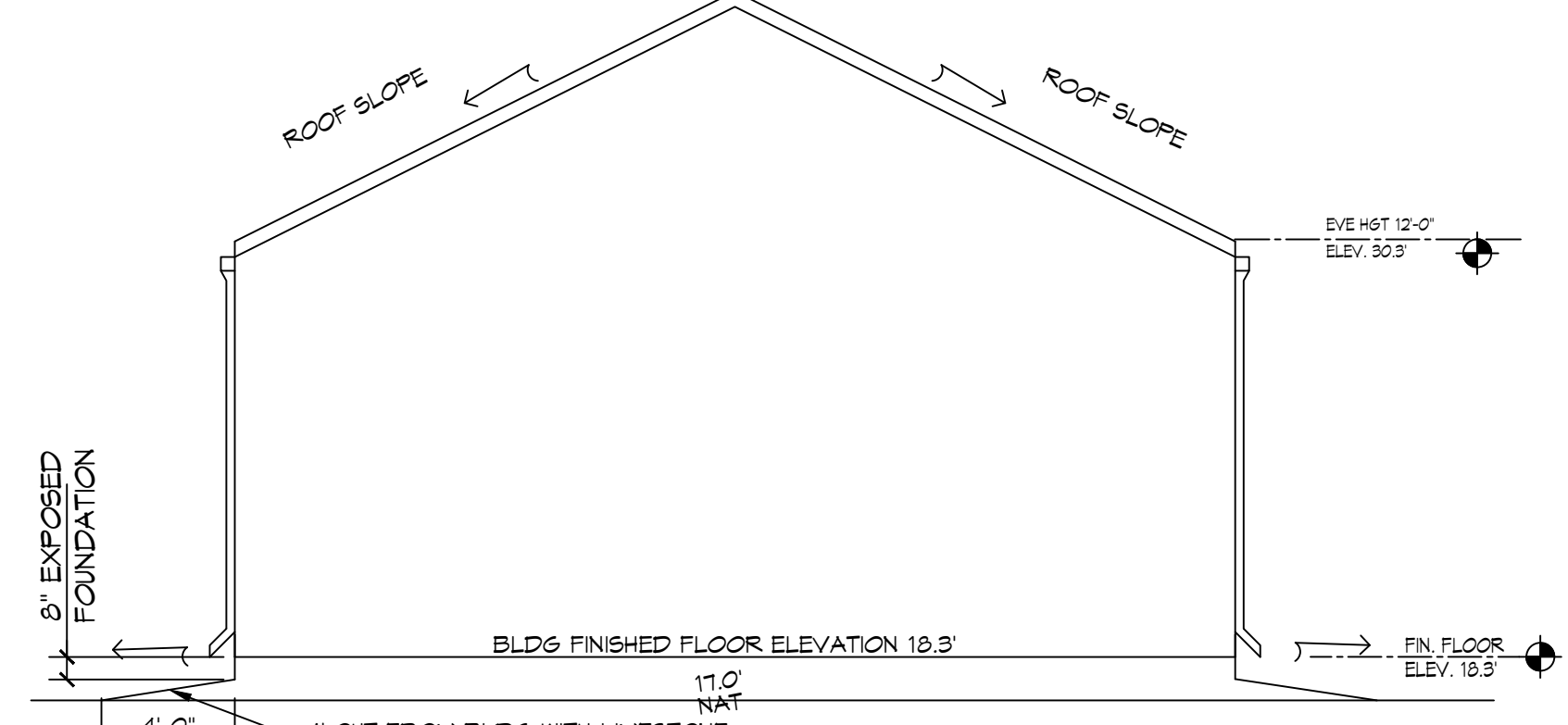
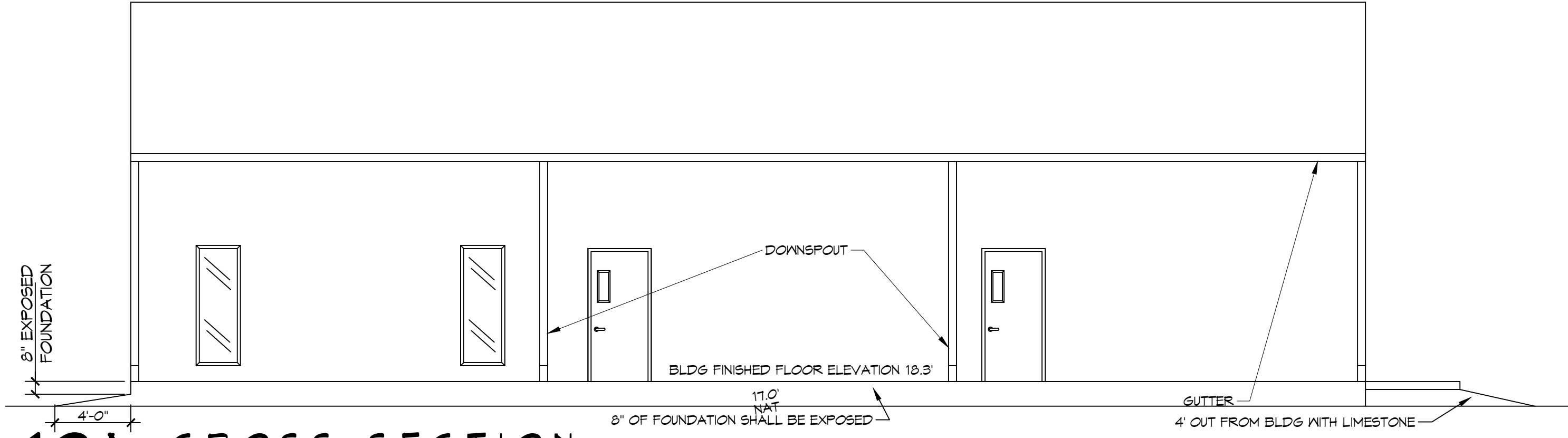


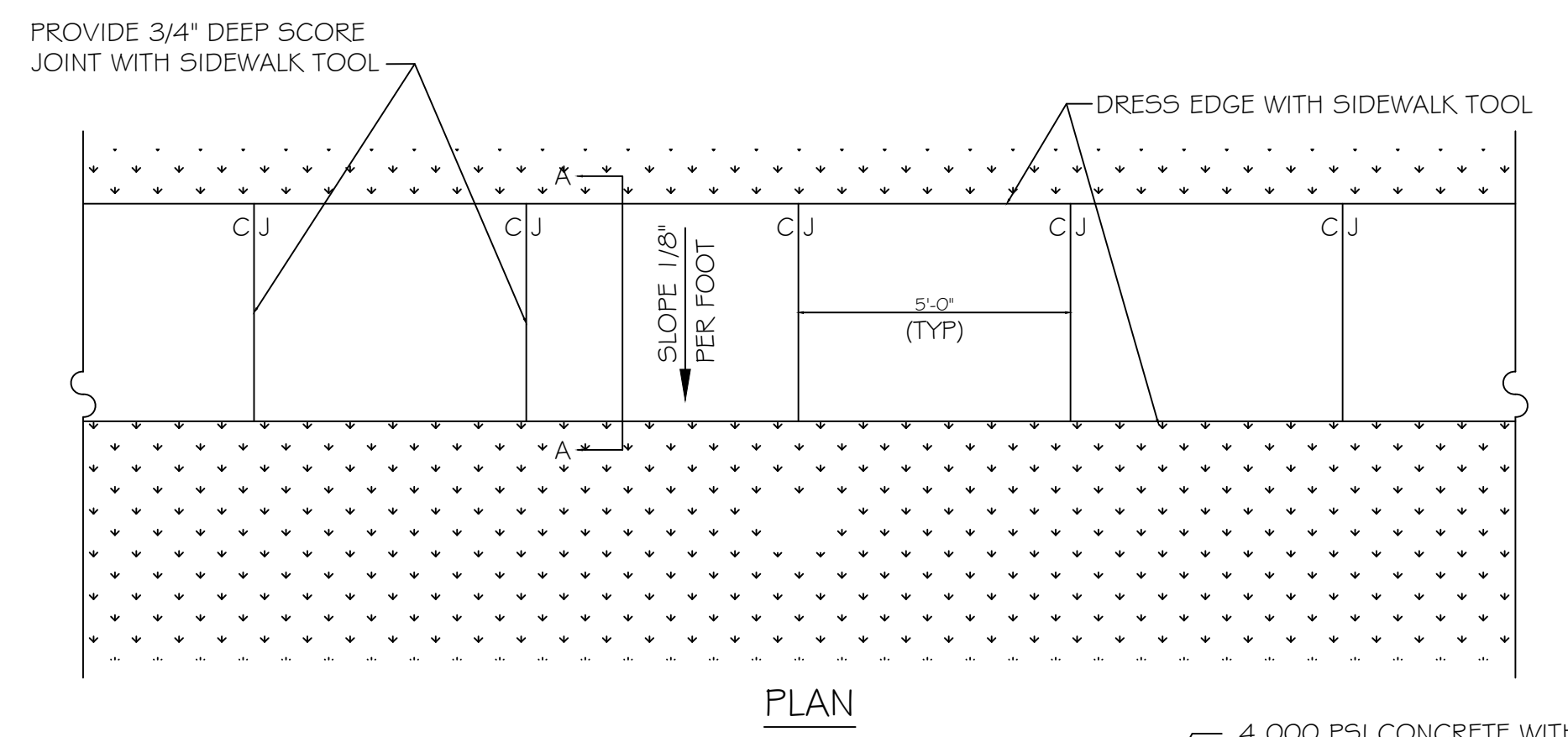
PAVING & FILL PLAN
SCALE: 1" = 10'-0"



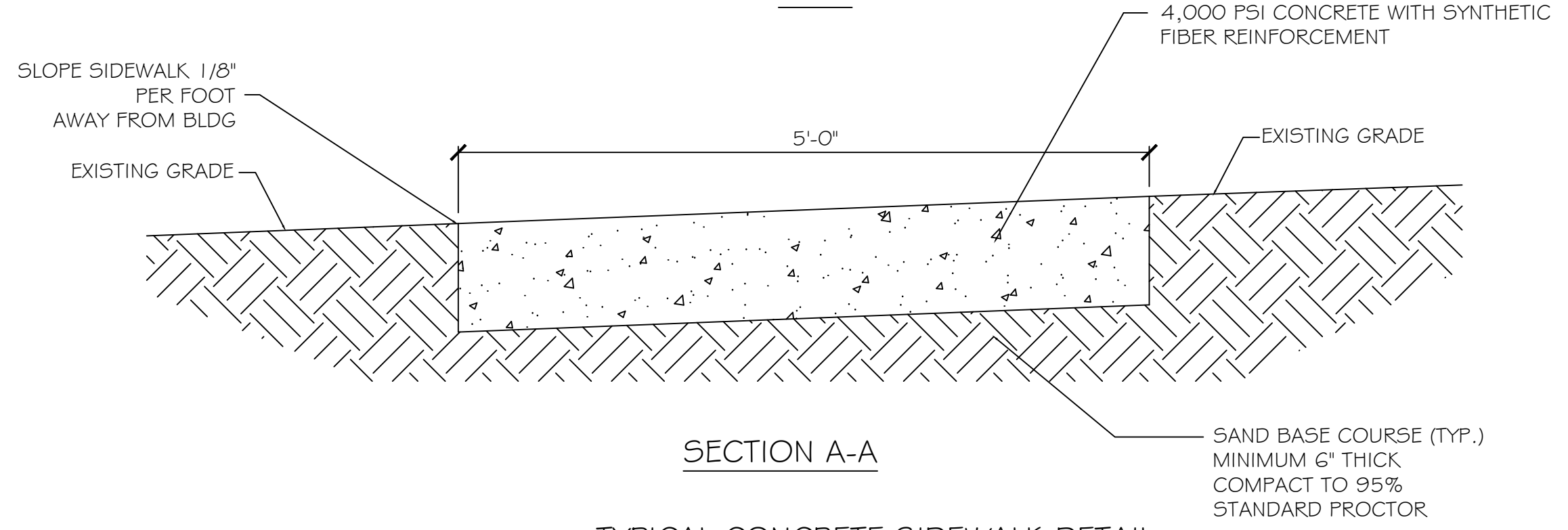
10 CROSS SECTION
SCALE: 3/16" = 1'-0"



10A CROSS SECTION
SCALE: 3/16" = 1'-0"



PLAN



SECTION A-A

TYPICAL CONCRETE SIDEWALK DETAIL
N.T.S.

GENERAL SIDEWALK NOTES

SIDEWALKS = 5" THICKNESS (INDICATED WITH CROSS MIX FOR ONE CUBIC YARD OF FIBER-REINFORCED CONCRETE:
 28 DAY STRENGTH 4000 PSI
 CEMENT (ASTM C-150, TYPE I/II) 4.64 SACKS (436 LBS.)
 FLY ASH (ASTM C-618) 1.16 SACKS (109 LBS.)
 GRAVEL (ASTM C-33, GRADE A) 1775 LBS.
 SAND (ASTM C-33) 1226 LBS.
 WATER (POTABLE) 30 GALLONS (250 LBS.)
 TYPE A WATER REDUCER (ASTM C-494) 16.35 LBS.
 AIR ENTRAINMENT 5% BY VOLUME, USE PER MANUFACTURER'S SPECIFICATIONS
 FIBER REINFORCEMENT 1.5 LBS./CY MICROFIBERS, AS SPECIFIED BELOW

FIBER REINFORCEMENT FOR CONCRETE SIDEWALKS SHALL BE MATRIX MONOFILAMENT MICROFIBER AS MANUFACTURED BY FRG INDUSTRIES OR APPROVED EQUAL, APPLIED THROUGHOUT THE CONCRETE MIXTURE. ALTERNATE PRODUCTS MUST BE PREAPPROVED BY THE ENGINEER IN WRITING. CELLULOSE (TREATED OR UNTREATED), AR GLASS, NYLON AND POLYESTER FIBERS ARE SPECIFICALLY PROHIBITED FROM USE.

CONTRACTOR SHALL FURNISH ALL MATERIALS, LABOR, AND EQUIPMENT NEEDED TO CONSTRUCT WALKWAYS AND PAVES.

PAVING LEGEND

- TOP OF CONCRETE ELEVATION
- EXISTING CATCH BASIN
- EXISTING TOPO

DAMMON ENGINEERING, INC.
 LOUISIANA & MISSISSIPPI
 Chief Engineer: Brian Mistich, PE
 554 Old Spanish Trail
 Slidell, LA 70468
 www.dammonengineering.com
 info@dammonengineering.com
 PH: 985.649.5832

| # | DESCRIPTION | DATE |
|---|-------------|------|
| | | |
| | | |
| | | |
| | | |



NEW TRAINING FACILITY
 ST. TAMMANY FIRE PROTECTION DISTRICT NO. 1
 94180 S RANGE ROAD
 SLIDELL, LA 70460
 JOB No: 25071 DATE: 02-10-2025
 DRAWN BY: BAW
 C&D CHECKED BY: BAW

SHEET TITLE:
 PAVING & FILL PLAN
 DRAWING NUMBER:
C103
 SHEET No: 5 of 15