

# HBC Series

## Premiere Fluorescent Full Body High Bay

### FEATURES & SPECIFICATIONS

#### INTENDED USE

High efficiency T5 High Output or T8 fixtures engineered for premium performance in medium and high ceiling applications ideally suited for warehouses, manufacturing plants, sports facilities and retail spaces. A precision-formed reflector system available in either highly reflective mirror or enhanced white reflector achieve maximum light output for ceilings from 15 feet to 40 feet. The unique lamp arrangement is ideal for wide area lighting to put the light exactly where you need it with less fixtures. Based on ceiling height, these fixtures can replace an HID high bay using half of the wattage. Surface, pendant, chain or stem mounting. Optional wireguard allows easy lamp access. Highest quality materials and workmanship.

#### SIZE W x L x H in inches (mm)

4 lamp: 11.4W x 48.1L x 3.6Dp      10 lamp: 20.4W x 48.1L x 3.6Dp  
6 lamp: 16.4W x 48.1L x 3.6Dp      12 lamp: 20.4W x 48.1L x 3.6Dp  
8 lamp: 16.4W x 48.1L x 3.6Dp

\*Dimensions are slightly different with Door Frame Option

#### LAMP

4, 6, 8, 10 or 12 lamp positions

#### CONSTRUCTION

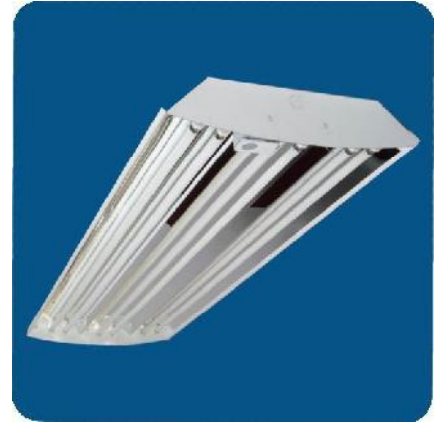
Housing is 22 gauge prepainted steel. Air vents surround the ballast and lamps in the back of the fixture to maximize lamp and ballast performance, reliability and life. High reflective mirror or enhanced white reflectors are computer designed to maximize photometric performance and put the light where you need it. Reflector snaps into fixture with no tools and is easily removable for ballast maintenance. Access plate in the back makes wiring fast and hassle-free. Back of fixture is designed with built-in mounting holes for tong hanger, cable kit and surface mount. Uplight slots are optional to add uplight. Integral Occupancy Sensor is optional on 6 light series which is ideal for wire guard applications.

#### MOUNTING

Designed for surface, pendant, stem or chain hanging. Mounting holes are provided for simple, fast installation. See Buyers Guide for list of all mounting options available and sold separately.

#### ELECTRICAL

All ballasts are Class P rated and UL/CUL listed. Our ballasts are thermally protected, sound rated and tightly secured to chassis. Consult for the specific ballast required. Available in 120V, 277V, 347V and 480V.



Shown is SS Option with Integral Occupancy Sensor

Door Frame Option See Pages 8, 9 for More Information



#### DOOR FRAME

Door Frame is 22 gauge prepainted steel snapped together and holds up to two accessory lens and wire guards. Door Frame is held to fixture with lift and shift assembly. A hole for a safety cable is provided.

Available for 4 light and 6 light versions.

#### LISTING

UL/CUL listed. Ballasts available to meet CEE certified.

#### TYPICAL OPTIONS AND ACCESSORIES

Emergency ballasts, Cord sets, whips, occupancy sensors, Hanging kits, Wire guards. Contact factory for additional options.

|                 |
|-----------------|
| Catalog Number: |
| Notes:          |



Shown is SS Option with Integral Occupancy Sensor

## ORDERING INFORMATION

EXAMPLE: HBCDFA632M23MV

| HBC                              | DFA  | 6                                   | 32        | M23                  | MV   |
|----------------------------------|--|-------------------------------------|-----------|----------------------|--|
| <b>Door Frame [5]</b>            |  | <b>Lamp Count</b>                   |           | <b>Lamp Type [1]</b> |  |
| <b>blank</b>                     | No Door Frame  | <b>4, 6, 8, 10 or 12</b>            | <b>32</b> | 48 in. T8            |  |
| <b>DFA</b>                       | Door Frame w/acrylic lens  | Lamps Not included                  | <b>54</b> | 46 in. T5HO          |  |
| <b>DFCL</b>                      | Door Frame w/ clear lens   |                                     |           |                      |  |
| *Add 125 for thicker lens        |  |                                     |           |                      |  |
| <b>Ballast &amp; Voltage [1]</b> |  |                                     |           |                      |  |
| <b>T480</b>                      |  | 480V-277V Stepdown Transformer      |           |                      |  |
| <b>MV</b>                        |  | Electronic, Multivolt (120-277)     |           |                      |  |
| <b>HMV</b>                       |  | Electronic, Multivolt, Hi-Lume [3]  |           |                      |  |
| <b>PMV</b>                       |  | Electronic, Program Start, T8       |           |                      |  |
| <b>X1</b>                        |  | Wired for Single Ended LED T8 Tubes |           |                      |  |
| <b>X2</b>                        |  | Wired for Double Ended LED T8 Tubes |           |                      |  |
| <b>Series</b>                    | <b>Reflector [2]</b>   |                                     |           |                      | <b>Options [1]</b>                             |
| <b>HBC</b>                       | <b>M23</b> Full specular mirror reflector, no uplight, wide distribution             |                                     |           |                      | <b>LN</b> Lamp Include with Kelvin Temperature |
| Fluorescent High Bay             | <b>M21</b> Full specular mirror reflector, no uplight, narrow distribution           |                                     |           |                      | <b>MDT4</b> Occupancy Sensor Wide Angle        |
| Full Body                        | <b>W13</b> Enhanced white reflector, no uplight, standard distribution               |                                     |           |                      | <b>MDF4</b> Occupancy Sensor and Daylight      |
| <b>SSHBC</b>                     | <b>M23UP</b> Full specular mirror reflector, wide distribution, with uplight slots   |                                     |           |                      | <b>CS8P</b> 5-15P 120V 8ft. Cord & Plug        |
| Fluorescent High Bay             | <b>M21UP</b> Full specular mirror reflector, narrow distribution, with uplight slots |                                     |           |                      | <b>CS12</b> L7-15P 277V 8ft. Cord & Plug       |
| Full Body with Integral          | <b>W13UP</b> Enhanced white reflector, standard distribution, with uplight slots     |                                     |           |                      | <b>CS8</b> 8ft. Cord, No Plug                  |
| Occupancy Sensor                 |  |                                     |           |                      | <b>WP</b> 6 ft. 3 wire, Whip                   |
| (6 Light Only)                   |  |                                     |           |                      | <b>WP4</b> 6ft. 4 Wire, Whip                   |
|                                  |  |                                     |           |                      | <b>EM</b> Emergency ballast, 500 lumens        |
|                                  |  |                                     |           |                      | <b>EM14</b> Emergency ballast, 1400 lumens     |
|                                  |  |                                     |           |                      | <b>X</b> No ballast                            |

### Notes

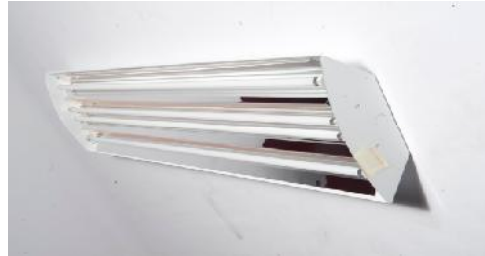
- [1] See current Buyer's Guide for additional ballast, lamp and other options.
- [2] Custom reflectors available to create any light distribution.
- [3] HiLume and LoLume ballasts available for T8 lamps only.
- [4] Available in bulk pack
- [5] 4 OR 6 LIGHT ONLY

See Buyers Guide for all options  
 Note: EM14 required for T5HO lamps. Consult factory for occupancy and daylight sensors.

|                 |
|-----------------|
| Catalog Number: |
| Notes:          |



**4 LIGHT**



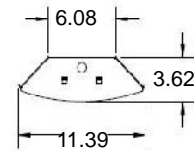
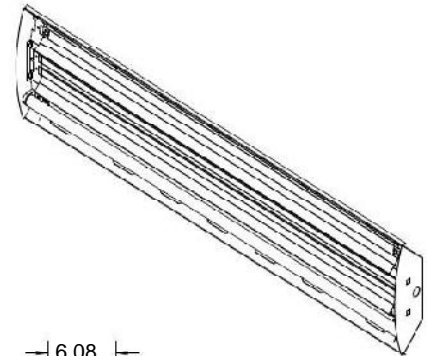
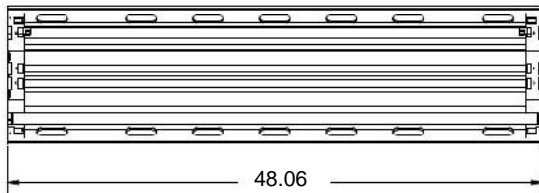
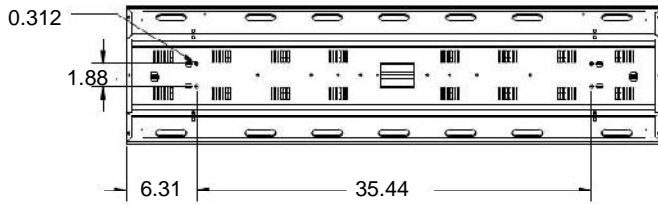
4 Light T8 with Mirrored Reflector



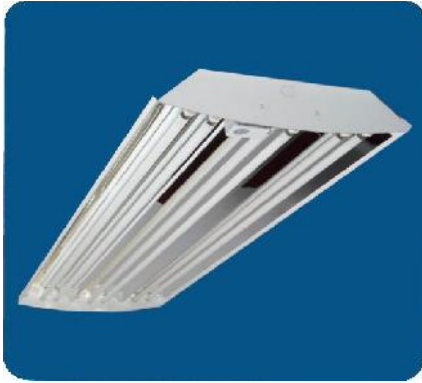
Back of Fixture



4 Light T8 with White Reflector with Uplight Slots



## 6 LIGHT



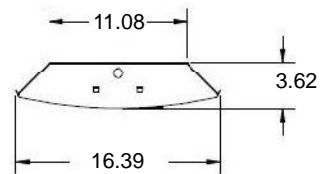
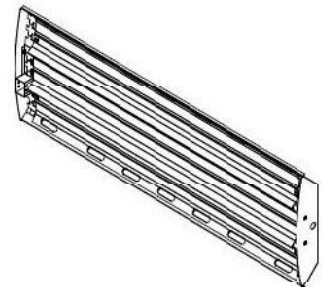
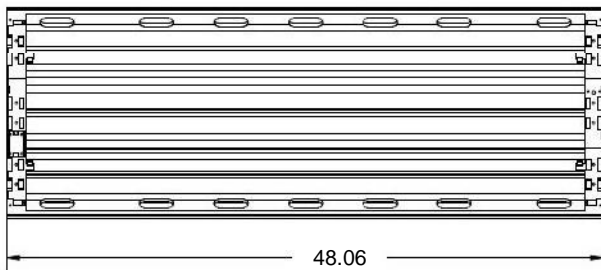
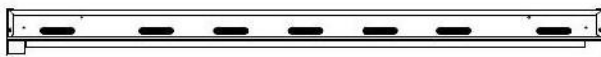
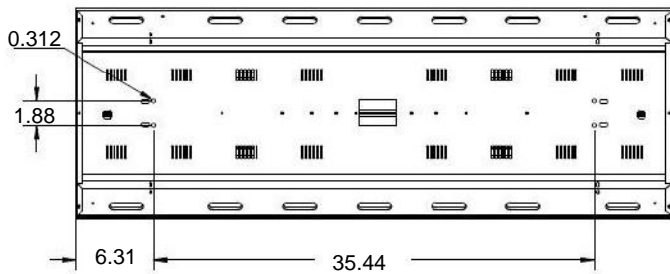
6 Light T5 with Integral Occupancy Sensor and Mirrored Reflector



Back of Fixture

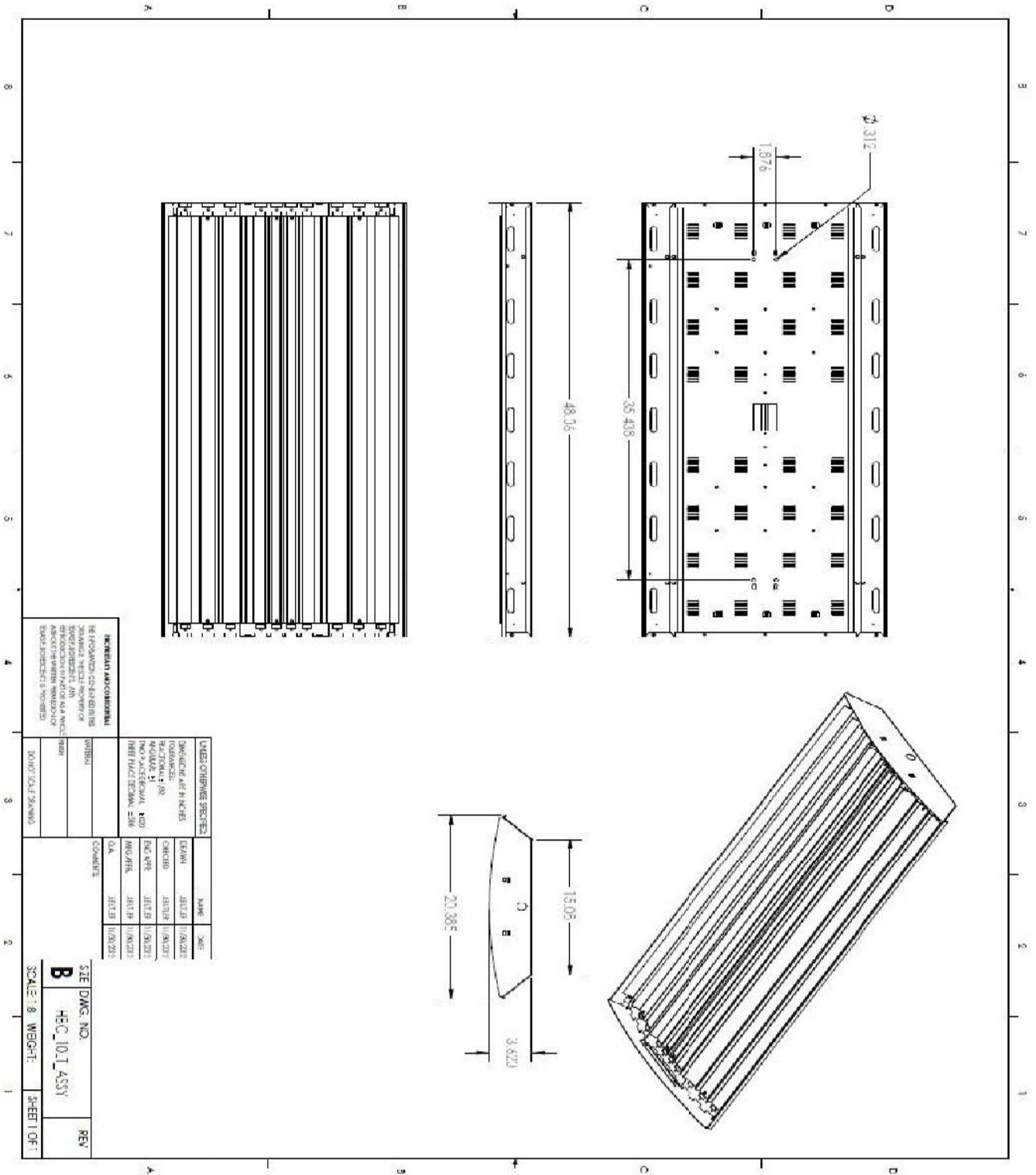


Close-up of Integral Occupancy Sensor in 6 Light Only





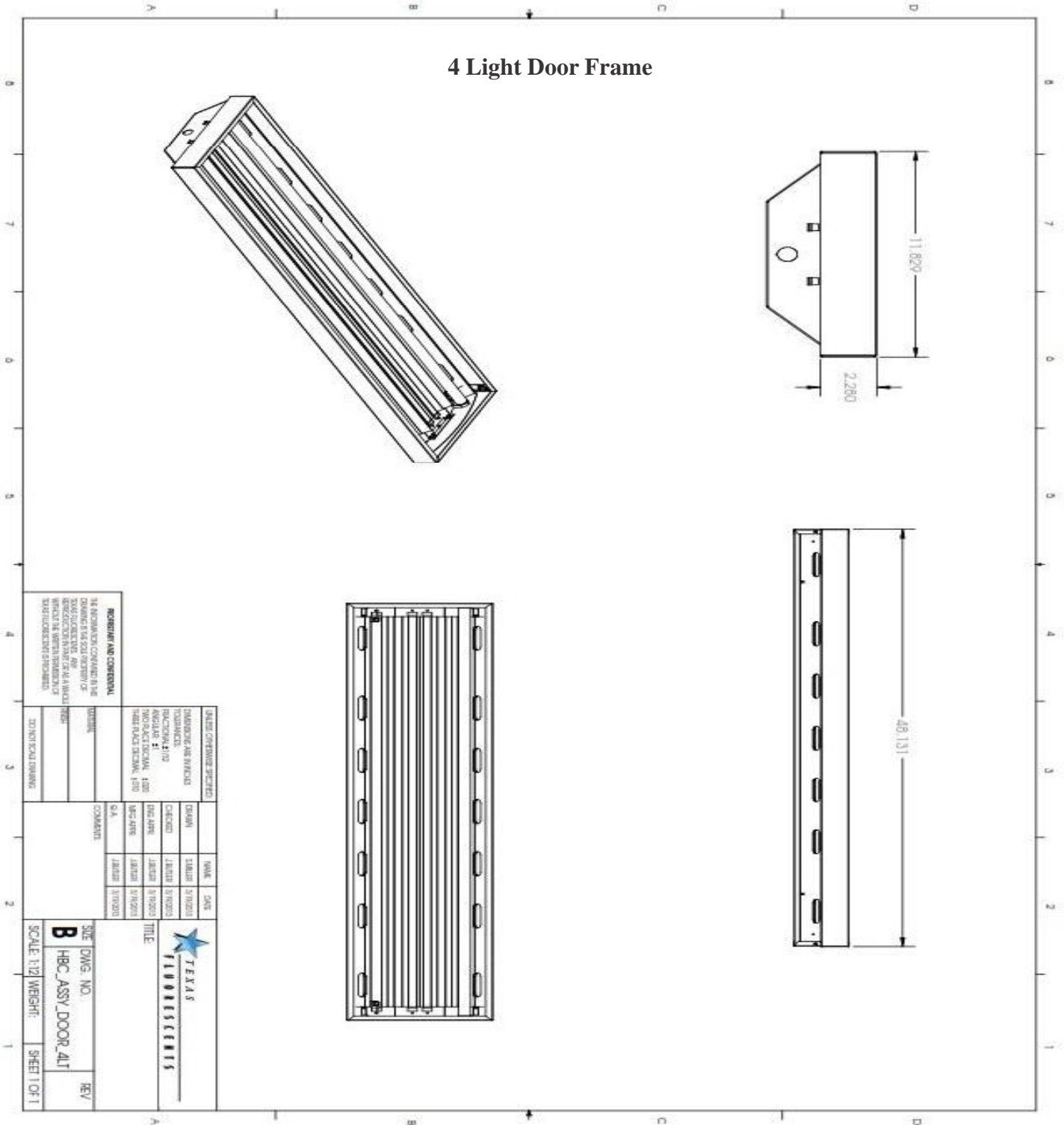
**10 LIGHT**



|                 |
|-----------------|
| Catalog Number: |
| Notes:          |



**4 Light Door Frame**



**IMPORTANT AND CONVENTIONAL**  
 COMMENTS FOR THE USER:  
 1. THIS DRAWING IS A PRELIMINARY DESIGN AND IS SUBJECT TO CHANGE WITHOUT NOTICE.  
 2. THE USER SHALL BE RESPONSIBLE FOR VERIFYING THE DIMENSIONS AND MATERIALS OF ALL COMPONENTS.  
 3. THE USER SHALL BE RESPONSIBLE FOR OBTAINING ALL NECESSARY PERMITS AND APPROVALS.  
 4. THE USER SHALL BE RESPONSIBLE FOR OBTAINING ALL NECESSARY MATERIALS AND SUPPLIES.  
 5. THE USER SHALL BE RESPONSIBLE FOR OBTAINING ALL NECESSARY LABOR AND SERVICES.  
 6. THE USER SHALL BE RESPONSIBLE FOR OBTAINING ALL NECESSARY TRANSPORTATION AND DELIVERY SERVICES.  
 7. THE USER SHALL BE RESPONSIBLE FOR OBTAINING ALL NECESSARY INSTALLATION AND MAINTENANCE SERVICES.  
 8. THE USER SHALL BE RESPONSIBLE FOR OBTAINING ALL NECESSARY WARRANTY AND SERVICE CONTRACTS.

|                      |          |                    |          |
|----------------------|----------|--------------------|----------|
| DRAWING NO. <b>B</b> |          | TITLE              |          |
| HBC_ASSY_DOOR_ALT    |          | 4 LIGHT DOOR FRAME |          |
| SCALE: 1/2" = 1'-0"  |          | SHEET 1 OF 1       |          |
| DATE                 | BY       | DATE               | BY       |
| 3/1/2010             | JLH      | 3/1/2010           | JLH      |
| CHECKED              | DESIGNED | CHECKED            | DESIGNED |
| JLH                  | JLH      | JLH                | JLH      |
| SA                   | SA       | SA                 | SA       |
| JLH                  | JLH      | JLH                | JLH      |
| 3/1/2010             | 3/1/2010 | 3/1/2010           | 3/1/2010 |

|                 |
|-----------------|
| Catalog Number: |
| Notes:          |

