

Not to Scale

Project Name: Fire Station #10_Slidel, LA - Site
 Client:
 Drawn By: EPardoe

Date: 2/3/2026
 Version: REV 1



THE ENGINEER AND/OR ARCHITECT MUST DETERMINE APPLICABILITY OF THE LAYOUT TO EXISTING / FUTURE FIELD CONDITIONS. THIS LIGHTING LAYOUT REPRESENTS ILLUMINATION LEVELS CALCULATED FROM LABORATORY DATA TAKEN UNDER CONTROLLED CONDITIONS IN ACCORDANCE WITH ILLUMINATING ENGINEERING SOCIETY APPROVED METHODS. ACTUAL PERFORMANCE OF ANY MANUFACTURER'S LUMINAIRE MAY VARY DUE TO VARIATION IN ELECTRICAL VOLTAGE, TOLERANCE IN LAMPS, AND OTHER VARIABLE FIELD CONDITIONS. THESE LIGHTING CALCULATIONS ARE NOT A SUBSTITUTE FOR INDEPENDENT ENGINEERING ANALYSIS OF LIGHTING SYSTEM SUITABILITY AND SAFETY. THE ENGINEER AND/OR ARCHITECT IS RESPONSIBLE TO REVIEW FOR COMPLIANCE OF ALL APPLICABLE ENERGY CODES AND LIGHTING QUALITY STANDARDS.

Luminaire Schedule							
Symbol	Label	Qty	Arrangement	Manufacturer & Part Number	LLF	Lum. Lumens	Lum. Watts
→	L12	11	Single	PORTOR - PT-WPC-HW-3CP 48W 4000K	0.900	7599	45.231
+	L13	3	Single	BLE-G-ASFC14-NA-G9-NA-NA-NA-NA-NA-LED16-3000K-DL	1.197	943	13.7
.	P1	5	Single	NLS - NV-2-T4-80L-7-40K	0.900	20160	168
.	P2	1	Single	NLS - NV-2-T3-80L-7-40K	0.900	20328	168

Calculation Summary										
Label	CalcType	Units	PtSpclr	PtSpctb	Avg	Max	Min	Avg/Min	Max/Min	Description
SITE_Top	Illuminance	Fc	10	10	4.16	28.6	0.2	20.80	143.00	CALCS TAKEN AT 0'-0" AFF

NOTES:

- 1) Fixture Mounting Heights (MH) are indicated next to each fixture.
- 2) All fixtures labeled with "_alt" indicates an alternative fixture different from what was listed in the fixture schedule received was used in this calculation
- 3) Interior reflectances 80/50/20; exterior reflectances 20% UON.
- 4) Quantity (QTY) indicated on HLPS Luminaire Schedule is for what is included in this calculation study only - Not final counts.
- 5) Contractor to verify exact fixture quantities and fixture run lengths before ordering.

Project Name: Fire Station #10_Slidell, LA - Site

Client:

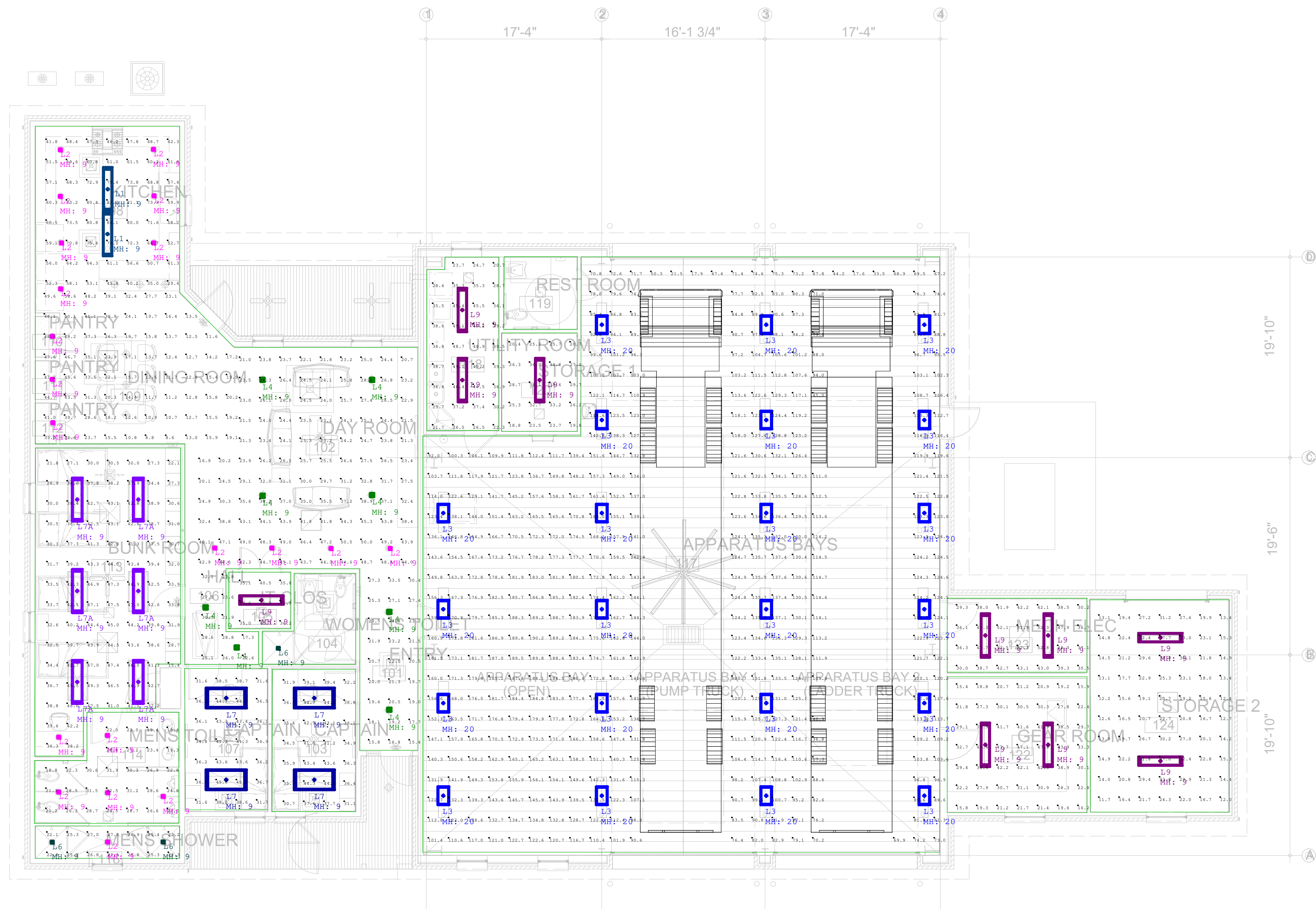
Date: 2/3/2026

Drawn By: EPardoe

Version: REV 1



THE ENGINEER AND/OR ARCHITECT MUST DETERMINE APPLICABILITY OF THE LAYOUT TO EXISTING / FUTURE FIELD CONDITIONS. THIS LIGHTING LAYOUT REPRESENTS ILLUMINATION LEVELS CALCULATED FROM LABORATORY DATA TAKEN UNDER CONTROLLED CONDITIONS IN ACCORDANCE WITH ILLUMINATING ENGINEERING SOCIETY APPROVED METHODS. ACTUAL PERFORMANCE OF ANY MANUFACTURER'S LUMINAIRE MAY VARY DUE TO VARIATION IN ELECTRICAL VOLTAGE, TOLERANCE IN LAMPS, AND OTHER VARIABLE FIELD CONDITIONS. THESE LIGHTING CALCULATIONS ARE NOT A SUBSTITUTE FOR INDEPENDENT ENGINEERING ANALYSIS OF LIGHTING SYSTEM SUITABILITY AND SAFETY. THE ENGINEER AND/OR ARCHITECT IS RESPONSIBLE TO REVIEW FOR COMPLIANCE OF ALL APPLICABLE ENERGY CODES AND LIGHTING QUALITY STANDARDS.



Not to Scale

Project Name: Fire Station #10 - Slidell, LA

Client:

Date: 1/8/2026

Drawn By: EPardoe

Version:



THE ENGINEER AND/OR ARCHITECT MUST DETERMINE APPLICABILITY OF THE LAYOUT TO EXISTING / FUTURE FIELD CONDITIONS. THIS LIGHTING LAYOUT REPRESENTS ILLUMINATION LEVELS CALCULATED FROM LABORATORY DATA TAKEN UNDER CONTROLLED CONDITIONS IN ACCORDANCE WITH ILLUMINATING ENGINEERING SOCIETY APPROVED METHODS. ACTUAL PERFORMANCE OF ANY MANUFACTURER'S LUMINAIRE MAY VARY DUE TO VARIATION IN ELECTRICAL VOLTAGE, TOLERANCE IN LAMPS, AND OTHER VARIABLE FIELD CONDITIONS. THESE LIGHTING CALCULATIONS ARE NOT A SUBSTITUTE FOR INDEPENDENT ENGINEERING ANALYSIS OF LIGHTING SYSTEM SUITABILITY AND SAFETY. THE ENGINEER AND/OR ARCHITECT IS RESPONSIBLE TO REVIEW FOR COMPLIANCE OF ALL APPLICABLE ENERGY CODES AND LIGHTING QUALITY STANDARDS.

Luminaire Schedule							LLF	Lum. Lumens	Lum. Watts
Symbol	Label	Qty	Arrangement	Manufacturer & Part Number					
	L1	2	Single	PORTOR - PT-WAA-4F91-3CP		0.900	4148	29.0362	
	L2	20	Single	PORTOR - PT-CDL-6I-22		0.900	1790	21.1	
	L3	22	Single	LITETRONICS - LHBP245 185W		0.900	32752	177.5	
	L4	8	Single	PORTOR - JAR-DS-30W-35K-D		2.502	1298	10.6189	
	L6	3	Single	PORTOR - PT-CDL-6I-22		0.900	1790	21.1	
	L7	4	Single	PORTOR - PT-TRO2-24-3CP 34W 3500K		0.900	4497	32.8463	
	L7A	6	Single	PORTOR - PT-TRO2-14-3CP 25W 3500		0.900	3378	24.9559	
	L9	10	Single	PORTOR - PT-WAM-4F91-3CP		0.756	5468	38.6902	

Calculation Summary											
Label	CalcType	Units	PtSpclr	PtSpctb	Avg	Max	Min	Avg/Min	Max/Min	Description	
APPARATUS BAYS_Floor	Illuminance	Fc	2	2	129.18	190.2	17.3	7.47	10.99	CALCS TAKEN AT 0'-0" AFF	
BUNK ROOM - 113_Workplane	Illuminance	Fc	2	2	38.48	49.3	15.4	2.50	3.20	CALCS TAKEN AT 2'-6" AFF	
CAPTAIN - 103_Workplane	Illuminance	Fc	2	2	38.29	44.9	30.7	1.25	1.46	CALCS TAKEN AT 2'-6" AFF	
CAPTAIN - 107_Workplane	Illuminance	Fc	2	2	38.48	45.0	31.6	1.22	1.42	CALCS TAKEN AT 2'-6" AFF	
DAYROOM - 102	Illuminance	Fc	2	2	31.79	50.5	16.9	1.88	2.99	CALCS TAKEN AT 2'-6" AFF	
ENTRY - 101	Illuminance	Fc	2	2	22.05	33.5	15.4	1.43	2.18	CALCS TAKEN AT 0'-0" AFF	
GEAR ROOM - 122_Workplane	Illuminance	Fc	2	2	30.03	47.8	15.4	1.95	3.10	CALCS TAKEN AT 2'-6" AFF	
HALL - 106	Illuminance	Fc	2	2	25.98	32.1	17.3	1.50	1.86	CALCS TAKEN AT 0'-0" AFF	
IT CLOSET - 105_Workplane	Illuminance	Fc	2	2	39.19	46.9	35.0	1.12	1.34	CALCS TAKEN AT 2'-6" AFF	
KITCHEN - 108	Illuminance	Fc	2	2	60.75	84.1	29.4	2.07	2.86	CALCS TAKEN AT 2'-6" AFF	
MECHANICAL_ELECTRICAL - 123_Workplane	Illuminance	Fc	2	2	42.17	52.8	29.3	1.44	1.80	CALCS TAKEN AT 2'-6" AFF	
MEN'S SHOWER - 116_Floor	Illuminance	Fc	2	2	25.16	27.5	22.0	1.14	1.25	CALCS TAKEN AT 0'-0" AFF	
MEN'S TOILET - 114_Floor	Illuminance	Fc	2	2	25.64	32.5	15.4	1.66	2.11	CALCS TAKEN AT 0'-0" AFF	
PANTRY AND DINING ROOM - 109	Illuminance	Fc	2	2	24.94	54.6	8.6	2.90	6.35	CALCS TAKEN AT 2'-6" AFF	
STORAGE 1 - 120_Workplane	Illuminance	Fc	2	2	27.65	38.6	18.8	1.47	2.05	CALCS TAKEN AT 2'-6" AFF	
STORAGE 2 - 124_Workplane	Illuminance	Fc	2	2	21.20	37.7	11.7	1.81	3.22	CALCS TAKEN AT 2'-6" AFF	
UTILITY ROOM - 118_Workplane	Illuminance	Fc	2	2	36.72	49.2	20.7	1.77	2.38	CALCS TAKEN AT 2'-6" AFF	

NOTES:

- 1) Fixture Mounting Heights (MH) are indicated next to each fixture.
- 2) All fixtures labeled with "_alt" indicates an alternative fixture different from what was listed in the fixture schedule received was used in this calculation
- 3) Interior reflectances 80/50/20; exterior reflectances 20% UON.
- 4) Quantity (QTY) indicated on HPLS Luminaire Schedule is for what is included in this calculation study only - Not final counts.
- 5) Contractor to verify exact fixture quantities and fixture run lengths before ordering.

Project Name: Fire Station #10 - Slidell, LA

Client:

Date:1/8/2026

Drawn By: EPardoe

Version:



THE ENGINEER AND/OR ARCHITECT MUST DETERMINE APPLICABILITY OF THE LAYOUT TO EXISTING / FUTURE FIELD CONDITIONS. THIS LIGHTING LAYOUT REPRESENTS ILLUMINATION LEVELS CALCULATED FROM LABORATORY DATA TAKEN UNDER CONTROLLED CONDITIONS IN ACCORDANCE WITH ILLUMINATING ENGINEERING SOCIETY APPROVED METHODS. ACTUAL PERFORMANCE OF ANY MANUFACTURER'S LUMINAIRE MAY VARY DUE TO VARIATION IN ELECTRICAL VOLTAGE, TOLERANCE IN LAMPS, AND OTHER VARIABLE FIELD CONDITIONS. THESE LIGHTING CALCULATIONS ARE NOT A SUBSTITUTE FOR INDEPENDENT ENGINEERING ANALYSIS OF LIGHTING SYSTEM SUITABILITY AND SAFETY. THE ENGINEER AND/OR ARCHITECT IS RESPONSIBLE TO REVIEW FOR COMPLIANCE OF ALL APPLICABLE ENERGY CODES AND LIGHTING QUALITY STANDARDS.