

PLS. NAME: J.V. Gammone/0103 - Proj. #1010 - 410 Dammon Court - Slidell, LA 70458 - Date: 12/05/2025 - PLOT DATE: 12/05/2025 - 12/05/2025

GENERAL PLUMBING NOTES

- PLUMBING LINES SHOWN ARE DRAWN DIAGRAMMATIC IN NATURE AND REPRESENT CONCEPTUAL ROUTING ONLY. CONTRACTOR IS RESPONSIBLE FOR FIELD VERIFICATION OF ALL ACTUAL CONDITIONS.
- PROVIDE ALL LABOR, MATERIAL, TRANSPORTATION, SUPERVISION, CLEAN-UP, SERVICES, AND EQUIPMENT FOR A COMPLETE OPERATING SYSTEM. THE SYSTEM SHALL INCLUDE HOT AND COLD WATER PIPING, SEWER AND VENT PIPING, INSULATION, WATER HEATER, HANGERS, VALVES, SUPPORTS WITHOUT ANY RESTRICTIONS TO VOLUME, CUT AND PATCH AS REQUIRED TO INSTALL PIPES.
- ALL WORK AND MATERIAL SHALL CONFORM STRICTLY TO THE LATEST LOCAL CITY, PARISH, STATE AND NATIONAL GOVERNING CODES.
- CONTRACTOR IS TO FIELD VERIFY ALL EXISTING UTILITY LOCATIONS, ELEVATIONS AND SIZES PRIOR TO COMMENCING ANY WORK. CONTRACTOR SHALL PAY NECESSARY FEES FOR THE UTILITIES CONNECTIONS.
- CONTRACTOR IS RESPONSIBLE TO VERIFY THE EXISTING INVERTS AND SET NEW INVERTS OF SEWERAGE AND DRAINAGE PIPES.
- SEWERAGE LINES 3-INCH AND SMALLER SHALL BE SLOPED 1/4" PER FOOT AND LINES 4-INCH AND LARGER SHALL BE 1/8" PER FOOT.
- TEST ALL PIPING AT REQUIRED PRESSURE.
- ALL PLUMBING SHALL BE CLOSELY COORDINATED WITH STRUCTURAL, MECHANICAL SYSTEM AND ELECTRICAL SYSTEMS TO INSURE NO TRADES WILL CONFLICT WITH EACH OTHER.
- DO NOT SCALE DRAWINGS. SEE ARCHITECTURAL DRAWINGS FOR EXACT LOCATIONS OF DOORS, WINDOWS, WALLS, FIXTURES, ETC.
- ALL WATER MAINS AND PIPING NOT SHOWN FOR CLARITY, ALL LOCATIONS FIELD VERIFIED.
- DOMESTIC HOT AND COLD WATER PIPING AND FITTINGS UNDER SLAB SHALL BE ASTM B88 COPPER WATER TUBE, TYPE K, SOFT ANNEALED. NO JOINTS SHALL BE ALLOWED UNDER THE SLAB.
- DOMESTIC WATER PIPING AND FITTINGS ABOVE THE SLAB SHALL BE ASTM B38 COPPER WATER TUBE, TYPE L, HARD DRAWN WITH COPPER PRESSURE TYPE FITTINGS, ANSI B16.22. THE JOINTS SHALL BE SOLDERED TYPE USING ASTM B32 ALLOY GRADE 95A (95-5) SOLDER.
- SOIL, WASTE, VENT PIPING AND FITTINGS ABOVE THE SLAB SHALL BE SERVICE WEIGHT CAST IRON PIPE WITH BELL AND SPIGOT ENDS AND ONE PIECE NEOPRENE INSERT TYPE GASKET. USE PVC, SCHEDULE 40 OR ABS DWV PIPES AND FITTINGS WHERE PERMITTED BY CODE.
- ALL WATER PIPING AND FITTINGS ABOVE THE FLOOR SHALL BE INSULATED WITH 1/2" THICK FIBERGLASS INSULATION AND JACKET.
- ALL ELECTRICAL, MECHANICAL AND PLUMBING ELEMENTS PENETRATING FIRE PARTITIONS SHALL BE FIRE CAULKED. (PENETRATIONS THROUGH RATED CONSTRUCTION SHALL BE SEALED WITH A MATERIAL CAPABLE OF PREVENTING THE PASSAGE OF FLAMES AND HOT GASES WHEN TESTED IN ACCORDANCE WITH ASTM-E814.)
- SEE ROOF PLAN FOR PLUMBING ROOF PENETRATIONS. ROUTE VENT PIPES IN ATTIC AS NECESSARY.
- SEE SHEET G103 FOR CONTINUATION OF UTILITIES FROM POINT APPROXIMATELY FIVE FEET OUTSIDE OF BUILDING PERIMETER.
- ALL VENTS THROUGH ROOF (VTR) SHALL BE LOCATED A MINIMUM OF 10'-0" FROM ANY MECHANICAL OR NATURAL AIR INTAKE.

DRAWN DIAGRAMMATICALLY FOR CLARITY. FIELD VERIFY PLACEMENT OF ALL EQUIPMENT PRIOR TO FABRICATION.

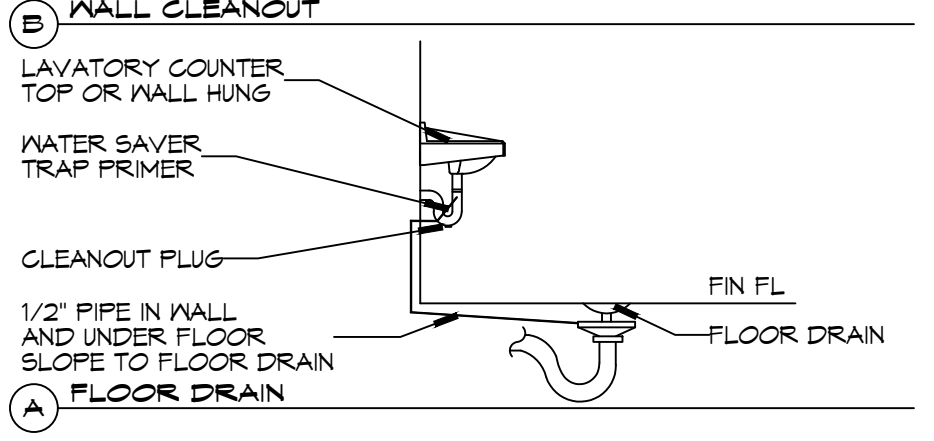
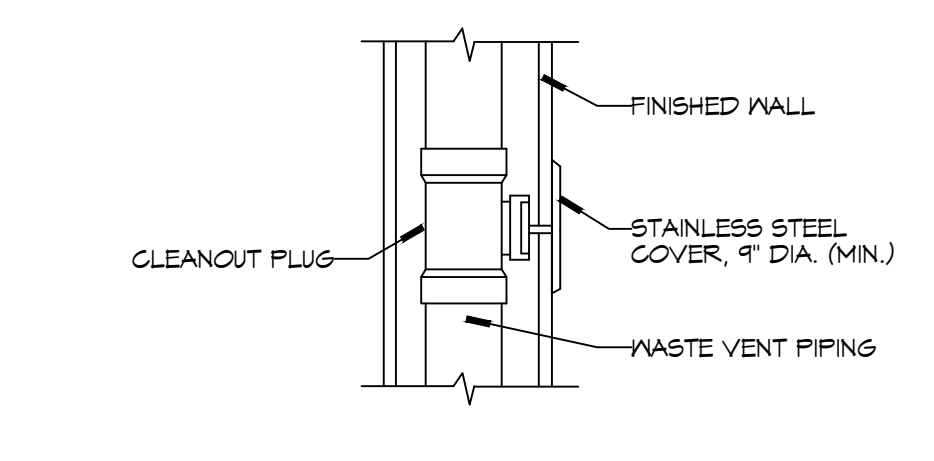
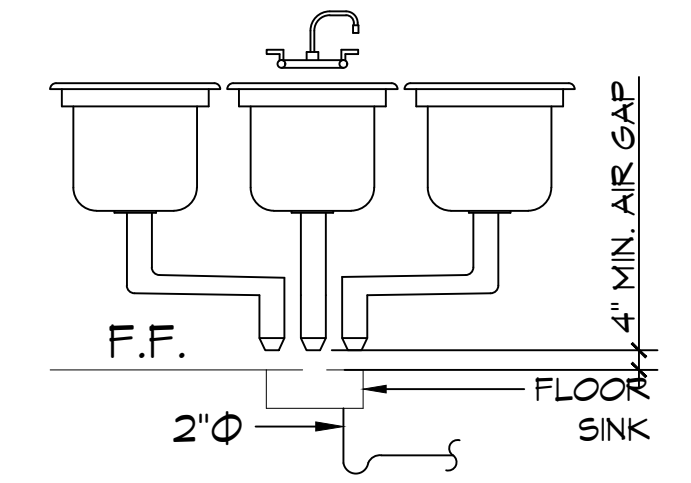
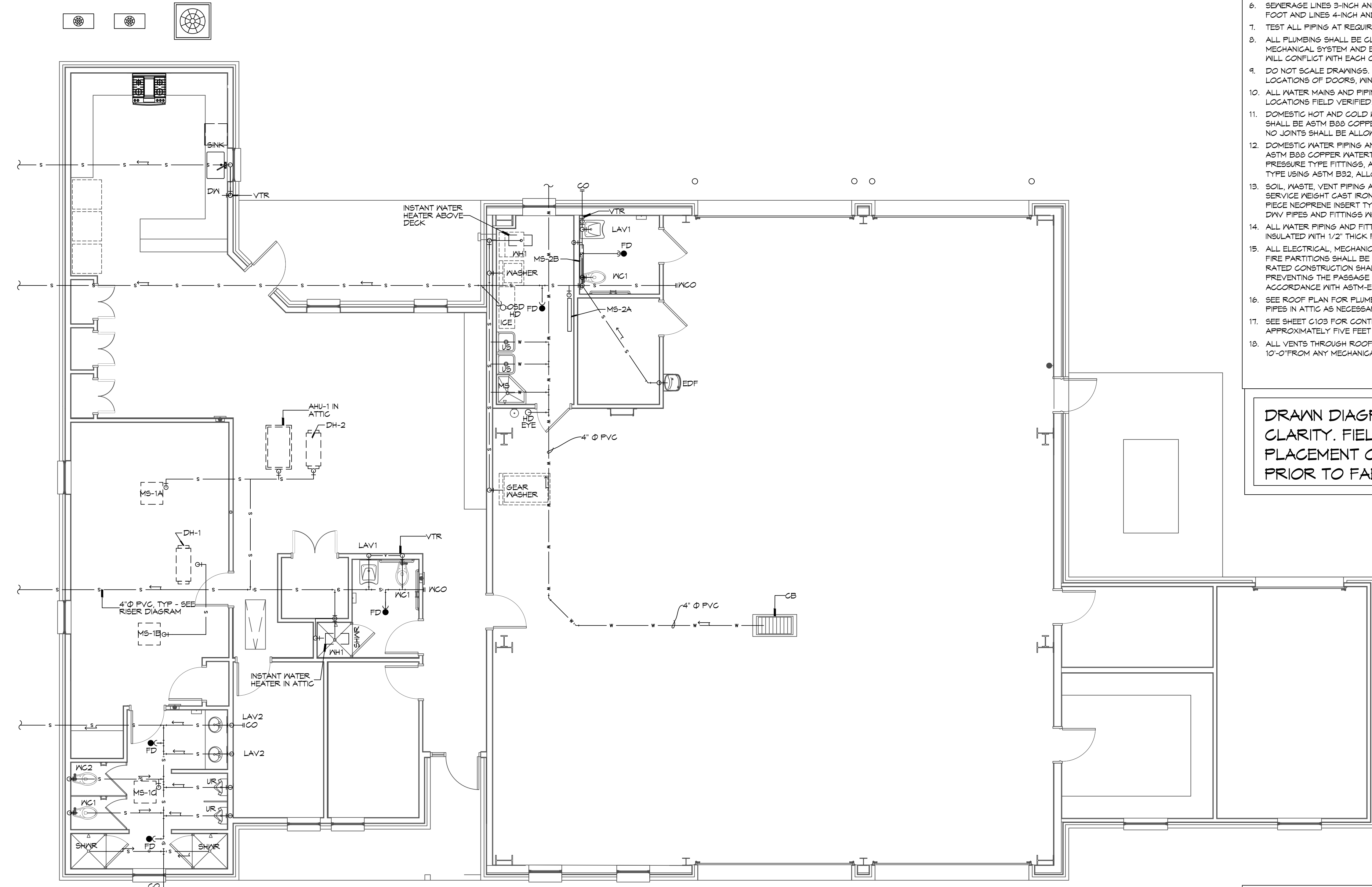
DAMMON ENGINEERING, INC.
 LOUISIANA & MISSISSIPPI
 Chief Engineer: Brian Mistich, PE
 554 Old Spanish Trail
 Slidell, LA 70458
 www.dammonengineering.com
 info@dammonengineering.com
 PH: 985.649.5832

#	DESCRIPTION	DATE

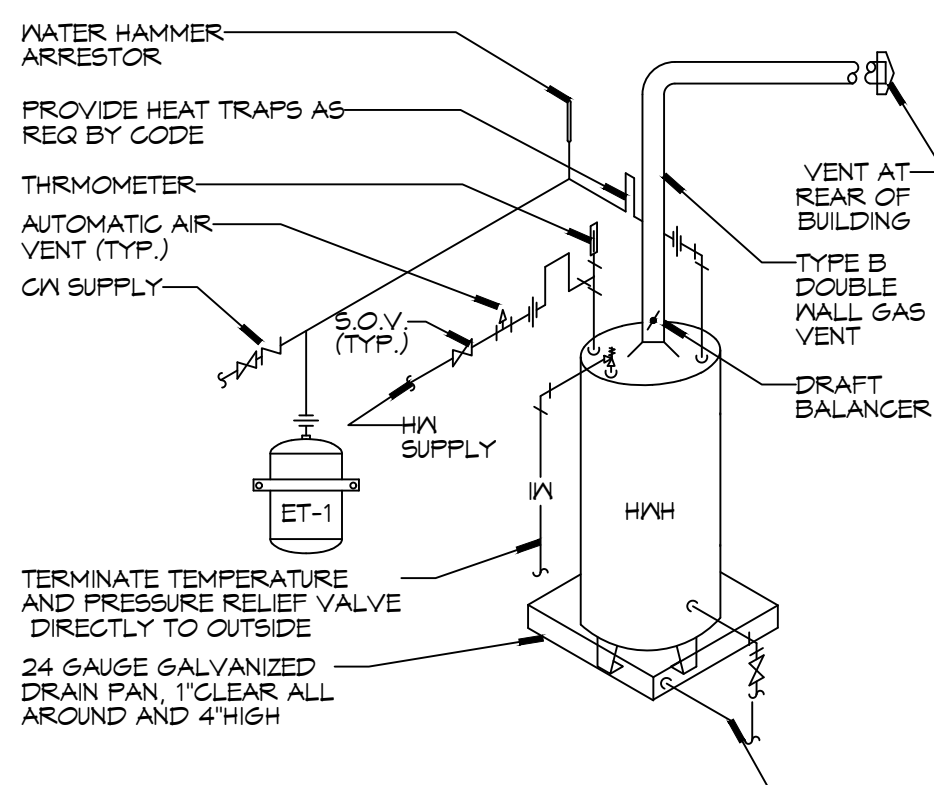


NEW FIRE STATION #10
 ST. TAMMANY FIRE PROTECTION DISTRICT NO. 1
 2146 LAKESHORE VISTA BLVD
 SLIDELL, LA 70461
 JOB No: 2519 DATE: 12-05-2025
 DRAWN BY: CKD CHECKED BY: BAK

SHEET TITLE:
 PLUMBING PLAN - SEWER AND WASTE, AND MISC PLUMBING DETAILS
 DRAWING NUMBER:
P101
 SHEET No: 30 of 31



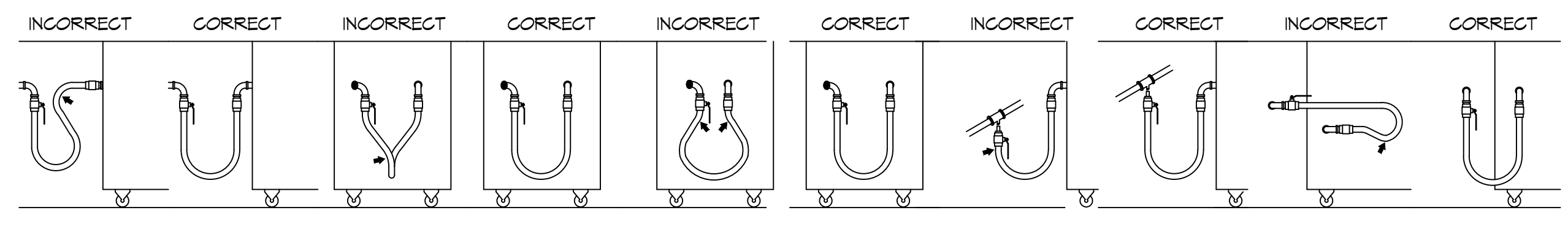
3 DETAILS
SCALE: NTS
MISCELLANEOUS PLUMBING



NOTE:
A WATERTIGHT PAN WITH 1" DRAIN SHALL BE PROVIDED UNDER WATER HEATER.

1 PLUMBING SEWER PLAN
SCALE: 3/16"=1'-0"

24" LAKESHORE VISTA BLVD
 SUITE 100
 SLIDELL, LA 70461
 (504) 885-4400
 www.dammoneengineering.com
 info@dammoneengineering.com
 PH: 985.649.5832



SHARP BENDS: THE CORRECT WAY TO INSTALL METAL HOSE FOR VERTICAL TRAVERSE IS WITH A SINGLE, NATURAL LOOP. AVOID SHARP BENDS THAT STRAIN AND TWIST THE METAL HOSE TO A POINT OF EARLY FAILURE AT THE COUPLING.

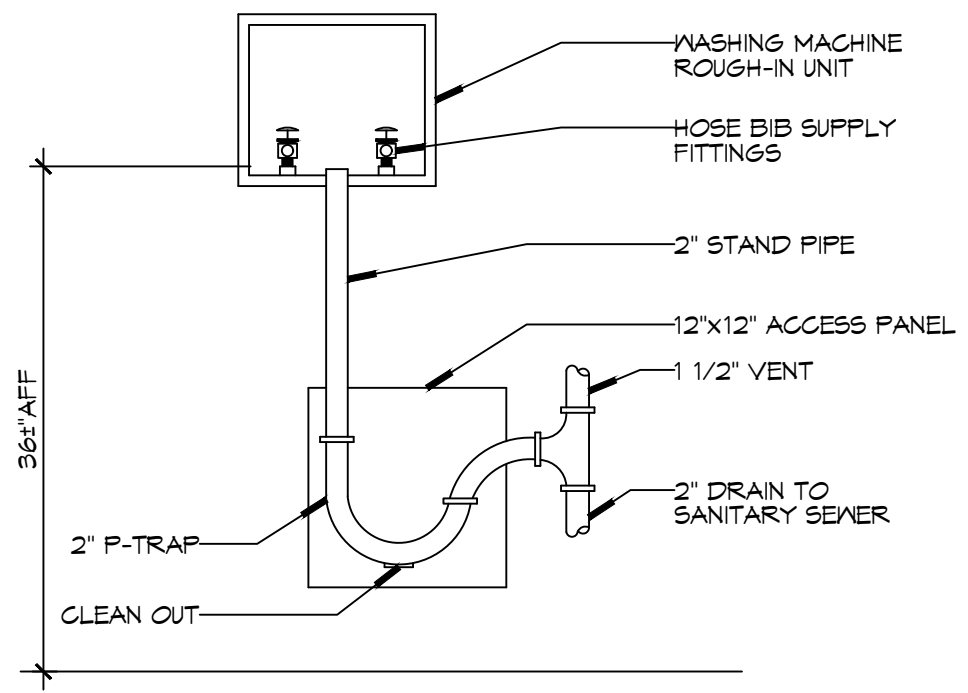
TWISTING: COUPLINGS AND HOSE SHOULD BE INSTALLED IN THE SAME VERTICAL PLANE. FAILURE TO DO SO CAUSES TORSIONAL TWISTING & UNIFORM STRAIN CAUSING PREMATURE FAILURE.

FATIGUE: MAINTAIN THE MINIMUM BENDING DIAMETER BETWEEN THE COUPLINGS. CREATING DOUBLE BENDS CAUSING WORK FATIGUE AT THE FITTINGS.

IN CORRECT: AVOID SHARP BENDS AND KINKS (WHEN PULLING EQUIPMENT AWAY FROM WALL). MAXIMUM PULL WILL KINK ENDS, EVEN IF INSTALLED PROPERLY, AND REDUCE CONNECTOR LIFE.

SELF-DRAINING: IN ALL INSTALLATIONS WHERE SELF-DRAINING IS NOT NECESSARY, CONNECT METAL HOSE IN A VERTICAL LOOP. DO NOT CONNECT METAL HOSE HORIZONTALLY UNLESS SELF-DRAINING IS NECESSARY, THEN USE SUPPORT ON LOWER PLANE.

CORRECT: MINIMUM PULL OF EQUIPMENT AWAY FROM WALL PERMISSIBLE FOR ACCESSIBILITY TO SUPR-QUIK DISCONNECT.



3 DETAIL
SCALE: NTS
WASHING MACHINE HOOK-UP

GENERAL PIPING NOTES

- SEE SHEET P101 FOR GENERAL PLUMBING NOTES.
- WATER LINES ON EXTERIOR WALLS SHALL BE ROUTED ON INTERIOR SIDE OF INSULATION.
- NOT USED.
- SEE PLUMBING RISER DIAGRAMS FOR PIPE SIZES NOT INDICATED ON THIS SHEET.

LEGEND

SYMBOL	DESCRIPTION
— CW —	COLD WATER SUPPLY PIPING (CW)
— HW —	HOT WATER SUPPLY PIPING (HW)
— THW —	TEMPERED WATER SUPPLY PIPING (THW)
— GAS —	GAS PIPING
⊘	GLOBE VALVE
⊘	TEMPERING VALVE
⊘	GAS COCK
⊘	HEATER
↗	ELBOW UP
↘	ELBOW DOWN
⊕	HOSE BIB
⊕	SPRINKLER RISER

GAS EQUIPMENT SCHEDULE

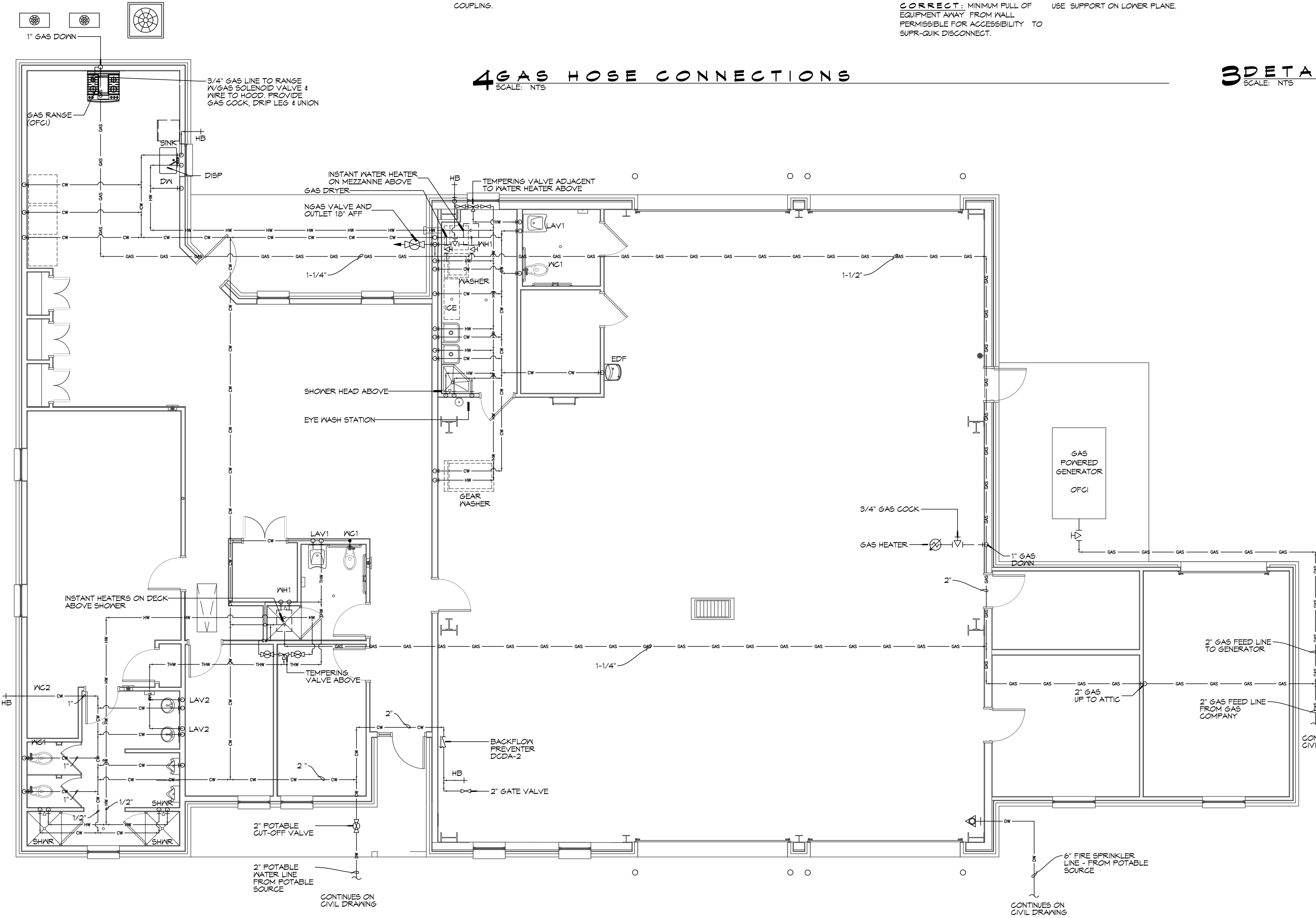
DESCRIPTION	BTU INPUT
RINNAI TANKLESS HOT WATER HEATER	199,900
RANGE	106,500
SPACE HEATER	125,000
CLOTHES DRYER	95,000
GENERATOR	1261000
TOTAL BTU	1,707,400

NOTES:
 1. ALL GAS PIPE SHALL BE SCHEDULE 40 BLACK STEEL PIPE. ALL PIPE INSTALLED ON ROOF SHALL BE SUPPORTED ON A PIPE PIER SUPPORT SYSTEM. WOOD BLOCKING NOT ALLOWED.
 2. ALL GAS PIPING IS SIZED FOR A LOW PRESSURE SYSTEM, (< 2 psig OR LESS AND A PRESSURE DROP OF 0.5in. OF WATER COLUMN.)

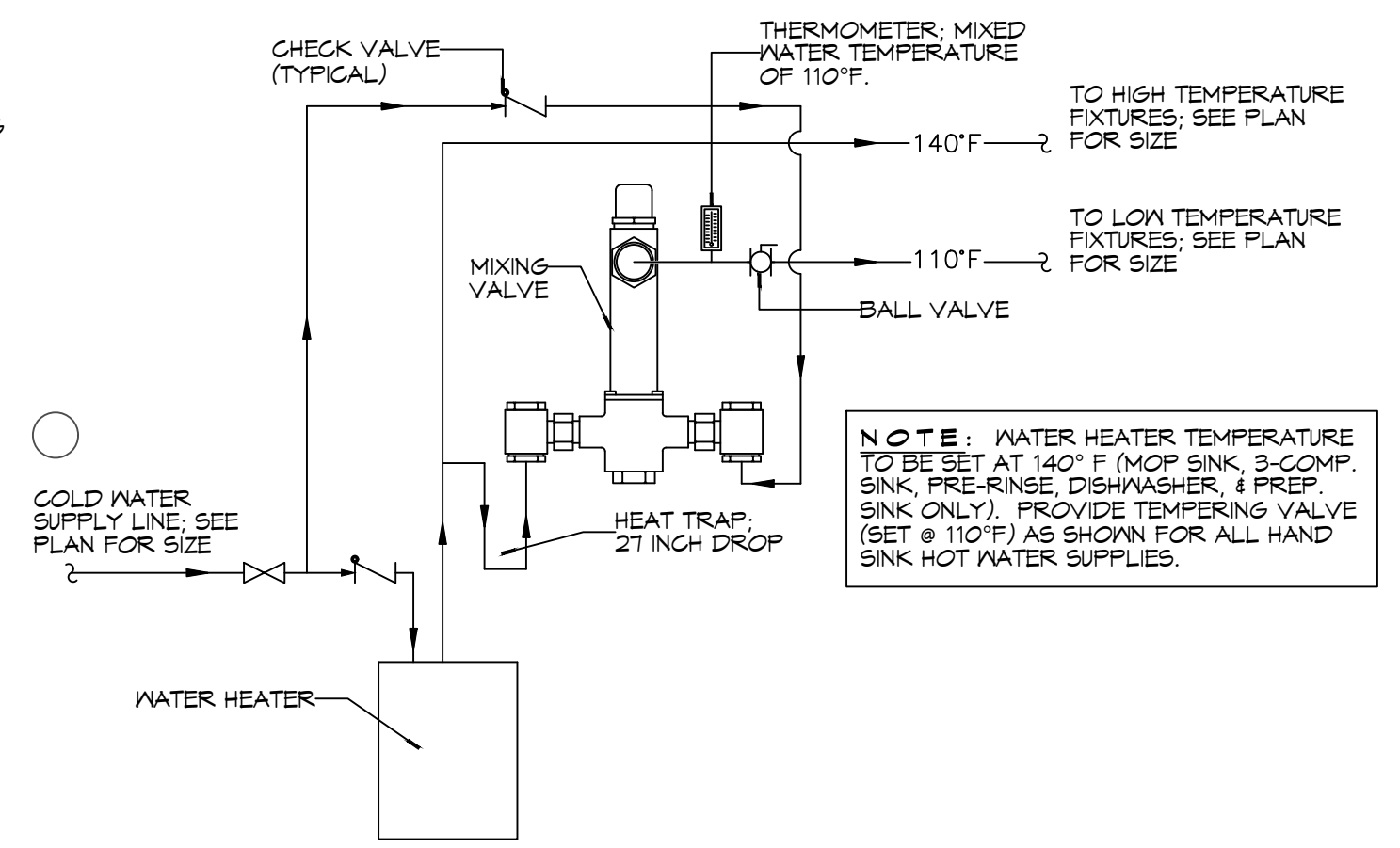
CONTACT FOR ATMOS ENERGY
 Kathleen A DuFour
 Account Representative
 Atmos Energy Corporation
 Louisiana Division
 985-373-9177 Cell
 kathleen.dufour@atmosenergy.com

CONTACT FOR MAGNOLIA WATER
 Steve Brissl
 Director, Louisiana Regulatory Relations
 Email: semstec@sgroup.com
 M(905) 640-1355

4 GAS HOSE CONNECTIONS
SCALE: NTS



NOTES:
 1. HEAT TRAP IS NOT REQUIRED WHERE MIXING VALVE IS INSTALLED BELOW STORAGE TANK OR WATER HEATER.
 2. SET THE MIXING VALVE TO THE SYSTEM ACCORDING TO MANUFACTURER'S INSTRUCTIONS.



NOTE: WATER HEATER TEMPERATURE TO BE SET AT 140° F. (MOP SINK, 3-COMP. SINK, PRE-RINSE, DISHWASHER, & PREP SINK ONLY). PROVIDE TEMPERING VALVE (SET @ 110°F) AS SHOWN FOR ALL HAND SINK HOT WATER SUPPLIES.

2 PLUMBING PLAN - WATER AND GAS
SCALE: 3/16"=1'-0"

1 DETAIL
SCALE: NTS
TEMPERED WATER VALVE

DAMMON ENGINEERING, INC.
 LOUISIANA & MISSISSIPPI
 Chief Engineer: Brian Mistich, PE
 554 Old Spanish Trail
 Slidell, LA 70458

#	DESCRIPTION	DATE



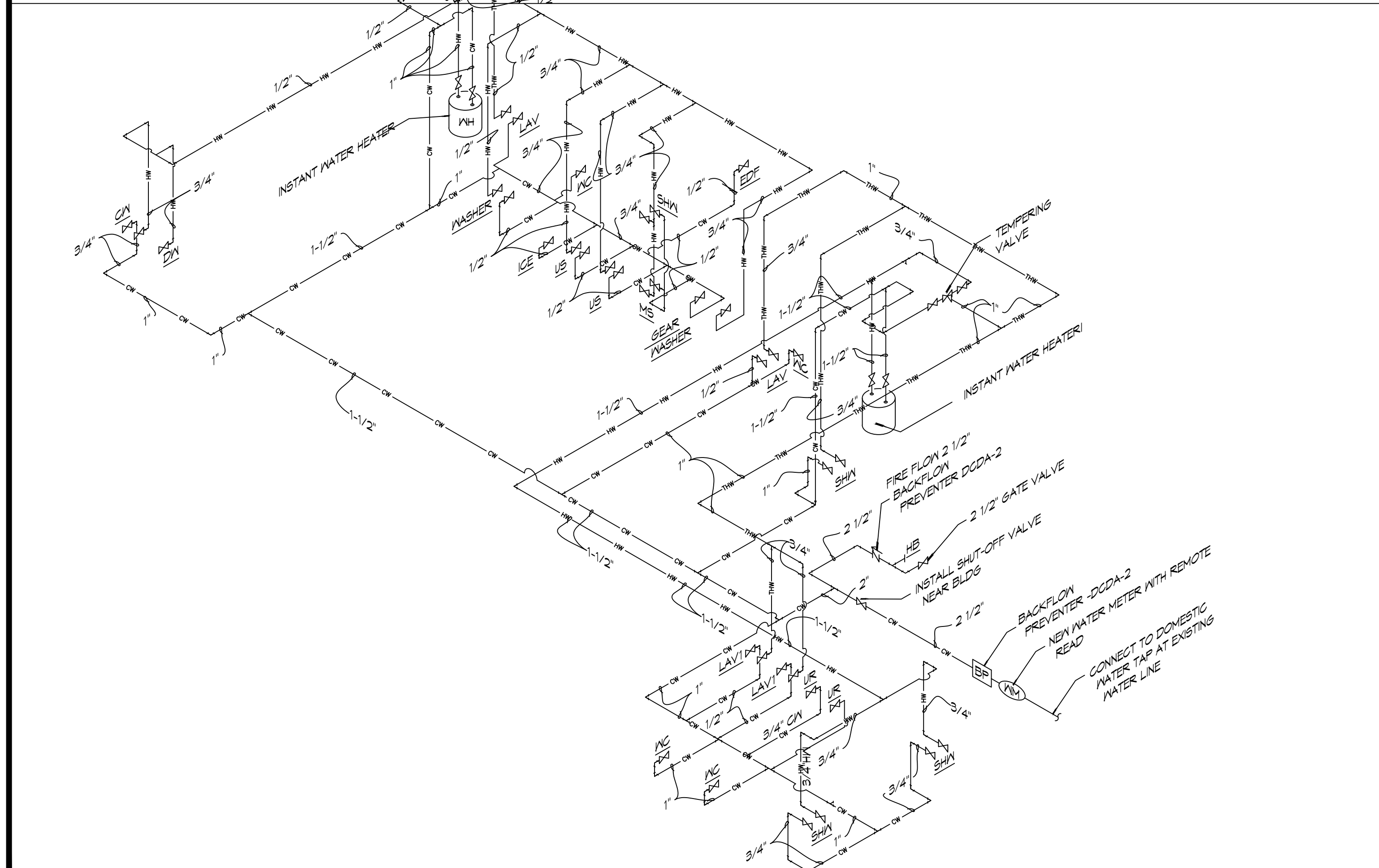
NEW FIRE STATION #10
ST. TAMMANY FIRE PROTECTION DISTRICT NO. 1
 248 LAKESHORE VISTA BLVD
 SLIDELL, LA 70461
 JOB No: 2519 DATE: 12-05-2025
 DRAWN BY: GKD CHECKED BY: BAW

SHEET TITLE:
 PLUMBING PLAN - WATER AND GAS
 DRAWING NUMBER:
P102
 SHEET No: 31 of 37

PLUMBING FIXTURE SCHEDULE

MK	DESCRIPTION	TYPE	ROUGH-IN SIZE				BASIS OF DESIGN	NOTES
			WASTE	VENT	CM	HM		
WC1	HOT WATER CLOSET	VALVE	4"	2"	1"	-	SLOAN ELONGATED FLOOR MOUNTED ADA WATER CLOSET ST-2029, SLOAN ELECTRONIC FLUSH, W/ELONGATED WHITE SEAT	3,4
WC2	WATER CLOSET	VALVE	4"	2"	1"	-	SLOAN ELONGATED FLOOR MOUNTED ADA WATER CLOSET ST-2029, SLOAN ELECTRONIC FLUSH, W/ELONGATED WHITE SEAT	4
UR	URINAL	WALL HUNG	2"	2"	1/2"	-	SLOAN WASHDOWN URINAL SU-1009 SLOAN ELECTRONIC FLUSH	
LAV1	HOT LAVATORY	WALL HUNG	2"	2"	1/2"	1/2"	SLOAN BATHROOM SINK: 55-3103 SLOAN DOUBLE BLADE FAUCET	2,3,4
LAV2	LAVATORY	COUNTER	2"	2"	1/2"	1/2"	EMMA WASH BASIN 4-520 MOEN DOUBLE BLADE FAUCET 8215	1,2,3,4
FD	FLOOR DRAIN	-	2"	2"	-	-	JAY R. SMITH 2010-B-P, COATED CAST IRON W/ADJUSTABLE NICKEL BRONZE GRATE, TRAP PRIMER CONNECTION & DEEP SEAL TRAP.	4
US	UTILITY SINK	FLOOR	2"	2"	3/4"	3/4"	FIAT FL-1 FLOOR MOUNTED LAUNDRY SINK WITH DELTA LF 2HDL FAUCET	4
MS	MOP SINK	FLOOR	2"	2"	3/4"	3/4"	FIAT TSBC1611 MOP SINK WITH CHICAGO 89T-RCF FAUCET, DELTA FAUCET MULTI-CHOICE VALVE BODY R10000-IPMS; DELTA FAUCET MULTI-CHOICE PRESSURE BALANCE SHOWER VALVE T13H153 AND T13H162	4
SINK	SINGLE KITCHEN SINK	UNDER COUNTER	2"	2"	3/4"	3/4"	KRAUS 32" UNDERMOUNT SINGLE BOWL KHU100-32 KOHLER THREE FUNCTION SPRAYHEAD K-29106	4
DISP	GARBAGE DISPOSAL	UNDER COUNTER	2"	2"	-	-	INSINKERATOR LC-50	4
DW	DISHWASHER	UNDER COUNTER	-	-	-	1/2"	OFGI	5
SHWR	SHOWER	-	3"	2"	1/2"	1/2"	36"X36" AQUATIC SHOWER W/GLASS DOOR, 1369BF-8C WITH DELTA FAUCET MULTI-CHOICE VALVE BODY R10000-IPMS, DELTA FAUCET MULTI-CHOICE PRESSURE BALANCE SHOWER VALVE T13H153 AND T13H162; AND JONES STEPHENS CORP. NO CAULK SHOWER STALL DRAIN AND 95 STRAINER D40140.	4
MH1	WATER HEATER	GAS	-	3"	3/4"	3/4"	RINNAI 199I INSTANT NONCONDENSING WATER HEATER	4
N/A			-	-	-	-		
EDF	ELEC DRINKING FOUNTAIN	WALL HUNG	1-1/2"	1"	1/2"	-	ELKAY DRINKING FOUNTAIN WITH BOTTLE FILLER: ON-WALL, REFRIGERATED, 39 1/2 IN HT, GRAY, FILTERED	4
ICE	ICE MACHINE	FLOOR MOUNT	2"	2"	1/2"	-	OFGI	5
WASH	LAUNDRY WASHING MACHINE	FLOOR MOUNT	2"	1-1/2"	3/4"	3/4"	OFGI	5
DRYER	GAS CLOTHES DRYER	FLOOR MOUNT	-	-	-	-	OFGI	5
HB	FREEZE PROOF HOSE BIBB	WALL	-	-	1/2"	-	ZURN Z1341-BFP WALL FAUCET W/ BACKFLOW PREVENTER	4
FCO	FLOOR CLEAN-OUT	-	-	-	-	-	MADE W-6004-Y, CAST IRON W/ADJUSTABLE HOUSING, ROUND HEAVY CAST IRON VANDAL PROOF TOP. (ALTERNATE JOSAM NO. 50014-15)	4
WCO	WALL CLEAN-OUT	-	-	-	-	-	MADE W-8453-R6, WITH BRASS PLUG AND ROUND STAINLESS STEEL SECURED ACCESS COVER.	4
CB	CATCH BASIN	-	SEE DWG	-	-	-	SGI PRECAST CB 24X24 W/CAST IRON FRAME AND GRATE U.S. FOUNDARY 4653/6337	4
OVS	OIL WATER SEPARATOR	-	-	-	-	-	50 GAL OIL WATER SEPARATOR	4
LS	NOT USED	-	-	-	-	-	NOT USED	4
DCDA-1	NOT USED	-	-	-	2"	-	NOT USED	4
DCDA-2	CHECK VALVE	-	-	-	2-1/2"	-	ZURN DOUBLE CHECK DETECTOR ASSEMBLY MODEL 3500A	4
ABH	APPARATUS BAY HEATER	WALL	-	-	-	-	SUPPLIED UNDER MECHANICAL CONTRACT STERLING MODEL TF 125	4
AHU	AIR HANDLING UNIT	-	2"	2"	-	-	SUPPLIED UNDER MECHANICAL CONTRACT	
EYE	EYEWASH STATION	FLOOR MOUNT	3"	2"	3/4"	3/4"	GUARDIAN 61825 EYEWASH	

NOTES:
 1. HOT WATER AND DRAIN PIPES UNDER LAVATORIES SHALL BE INSULATED OR OTHERWISE CONFIGURED TO PROTECT AGAINST CONTACT. THERE SHALL BE NO SHARP OR ABRASIVE SURFACES UNDER LAVATORIES.
 2. PROVIDE CHAIR CARRIER FOR ALL WALL-MOUNTED PLUMBING FIXTURES.
 3. INSTALL A CONTINUOUS DRIP VALVE ON ALL FLOOR DRAINS.
 4. PROVIDE FIXTURE AS DESIGNED OR PRIOR APPROVED EQUAL.
 5. OWNER FURNISHED AND CONTRACTOR INSTALLED (OFGI)
 TEMPERING VALVE

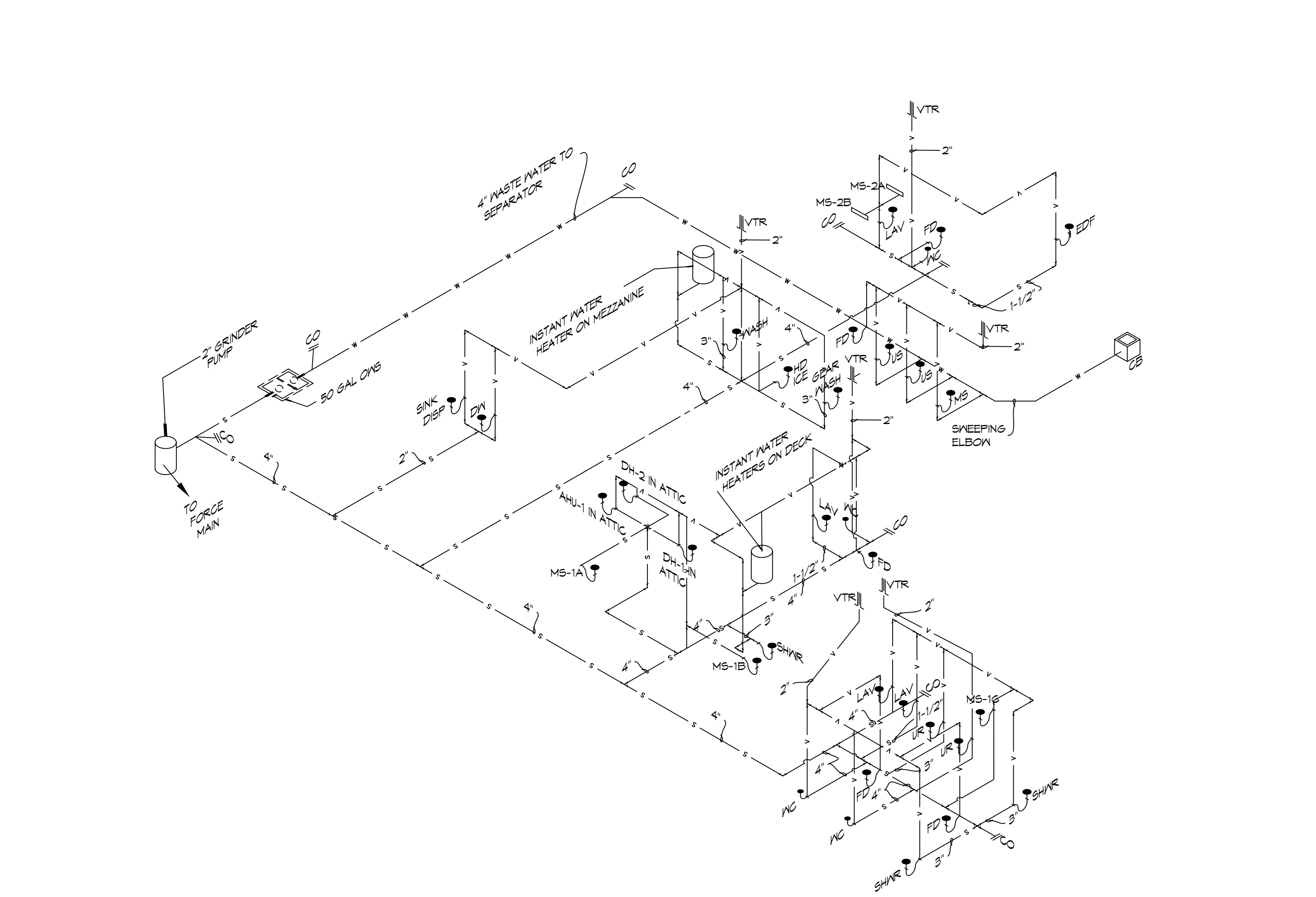


2 RISER DIAGRAM
SCALE: NTS PLUMBING WATER SUPPLY

RISER DIAGRAM NOTES

- PLUMBING LINES SHOWN ARE DRAWN DIAGRAMMATIC IN NATURE AND REPRESENT CONCEPTUAL ROUTING ONLY. CONTRACTOR IS RESPONSIBLE FOR FIELD VERIFICATION OF ALL ACTUAL CONDITIONS.
 - DO NOT SCALE DRAWINGS. SEE ARCHITECTURAL DRAWINGS FOR EXACT LOCATIONS OF DOORS, WINDOWS, WALLS, FIXTURES, ETC.
 - ALL ELECTRICAL, MECHANICAL AND PLUMBING ELEMENTS PENETRATING FIRE PARTITIONS SHALL BE FIRE CAULKED. ALL WALLS AND (PENETRATIONS THROUGH RATED CONSTRUCTION SHALL BE SEALED WITH A MATERIAL CAPABLE OF PREVENTING THE PASSAGE OF FLAMES AND HOT GASES WHEN TESTED IN ACCORDANCE WITH ASTM-E814.)
 - SEE SHEET P101 FOR GENERAL PLUMBING NOTES.
 - SEE ROOF PLAN FOR INTENDED LOCATIONS OF ALL ROOF PENETRATIONS.
 - SEE CIVIL DRAWINGS FOR SITE DRAINAGE CATCH BASIN LOCATIONS.
- CONTACT FOR ATMOS ENERGY: Kathleen A Dufour, Account Representative, Atmos Energy Corporation, Louisiana Division, 985-373-9171 Cell, kathleen.dufour@atmosenergy.com
- CONTACT FOR MAGNOLIA WATER: Steve Ernst, Director, Louisiana Regulatory Relations, Email: sernst@surgroup.com, M:(985) 640-1355

3 RISER DIAGRAM
SCALE: NTS



MIN-SPLIT SCHEDULE

AIR HANDLER							HEAT PUMP							
Tag	Make	Model	Cooling (MBH)	Heating (MBH)	Power VAC	PH	Tag	Make/Model	Model	Cooling (MBH)	Power VAC	PH	MCA	Remarks
MS-1A	Mitsubishi	SLZ-AF09NL	9	11	208	1	MS-1	Mitsubishi	MXZ-3D24NL	24	208	1	28.7	1, 2
MS-1B	Mitsubishi	SLZ-AF09NL	9	11	208	1								
MS-1C	Mitsubishi	SLZ-AF09NL	9	11	208	1								
MS-2A	Mitsubishi	MSZ-GX09NL	9	9.0	208	1	MS-2	Mitsubishi	MXZ-2D20NL	22	208	1	21.7	1, 3
MS-2B	Mitsubishi	MSZ-GX09NL	9	9.0	208	1								

- NOTES:**
1. Install per Manufacturer's recommendations
 2. Furnish with wired MA wall mount controller, matching grille and condensate pump.
 3. Furnish with MHK-2 wireless controller and condensate pump.

DX SPLIT SYSTEM SCHEDULE

AIR HANDLER										HEAT PUMP											
TAG	MAKE	MODEL	NOMINAL TONS	TOTAL CFM	O/A CFM	COOLING		Motor HP	ESP (" WC)	HEAT (Kw)	POWER			TAG	NOMINAL TONS	MAKE	MODEL	POWER			REMARKS
						TMBH	SBH				VAC	PH	MCA					VAC	PH	MCA	
AHU-1	Trane	5TAMXB0C60	5	1900	500	60	40	1	0.3	7.2	208	1	34	HP-1	5	Trane	5TWV0X60	208	1	37	1, 2

- NOTES:**
1. Provide inlet filter box, single point power connection, expansion valve, time delay relay, condensate overflow switch & programmable 7/24 thermostat.
 2. Cooling capacities to be rated in accordance with AHRI standard 210/290 for ASHRAE standard design weather conditions in New Orleans, LA.

Exhaust Fan Schedule

Tag	Fan				Power			Make / Model	Remarks
	Airflow (CFM)	TSP (" wc)	Amps	Watts	Volts	Phase	Hz		
EF-1	180	0.3		100	120	1	60	Loren Cook GN-542	1, 2
EF-2	50	0.2	0.4		120	1	60	Broan AE80SL	1, 2
EF-3	70	0.2	0.4		120	1	60	Broan AE80SL	1, 2
EF-4	160	0.2	1.5		120	1	60	Broan 503	1, 2
EF-5	160	0.3			120	1	60	Broan 503	1, 2
EF-6	7000	0.1	20		120	1	60	Greenheck AER-20	1, 2, 3
EF-7	1000	0.2		190	120	1	60	Greenheck CSP-A1050QD	1, 2

- NOTES:**
1. Install per Manufacturer's recommendations.
 2. Furnish with matching grille, speed control and backdraft damper.
 3. Aluminum construction w/ weatherhood and motorized damper

EXHAUST REMOVAL SCHEDULE

DESCRIPTION	QUANTITY
AIRVAC 911® EXHAUST REMOVAL SYSTEM - Single Ph. 115V	4
AIRVAC 911® FILTER PACK (4-Stage Filter Pack, "Main Filters")	4
AIRVAC 911® FILTER GAUGE (Min. one per building section)	1
UL 508A CERTIFIED CONTROL PANEL - AVCC-4C	1
ACTIVATION PACKAGE - E-960-D90Q PHOTO EYE (set) & N505AUTM/STX01 (2") TRACK MOUNTED DOOR SWITCH	4
PREFILTERS (12 Per Box/Change date est. indicated below)	1

- NOTE:**
1. ALL FANS INSTALLED IN RATED ASSEMBLIES SHALL BE EQUIPPED W/ APPROPRIATE FIRE DAMPER TO MATCH ASSEMBLY FIRE RATING.
 2. PAINT ALL SHUTTERS AND EXTERIOR GRILLES TO COLOR SPECIFICATION BY ARCHITECT.
 3. PROVIDE BIRSCREENS ON ALL SHUTTERS AND EXTERIOR GRILLES.
 4. PROVIDE BACK FLOW PREVENTER ON ALL EXHAUST SYSTEMS

**BIG ASS FAN;
BIG ASS POWERFOIL F-PFD1-1022534 FAN
WITH DOWNTUBE AND A 1HP MOTOR. MODEL
NUMBER F-PFD1-1022534.**

DEHUMIDIFIER SCHEDULE

TAG	Make	Model	Blower (CFM)	Vent (CFM)	Moisture Removal (Pints)	Power			Remarks
						VAC	Ph	Amps	
DH-1	Santa-Fe	V125	350	110	125	120	1	10.2	1
DH-2	Santa-Fe	V125	350	110	125	120	1	10.2	1

- NOTES:**
1. Install units in accordance with manufacturer's recommendations.

DIFFUSER SCHEDULE

TAG	SERVICE	NECK SIZE	DESCRIPTION	REMARKS
A	Supply Air	Ref. Plan	20" x 20" Adjustable Square Cone Diffuser, Price ASCDA w/ Insulated Back Panel	1, 2, 3
B	Supply Air	Ref. Plan	24" x 24" Adjustable Square Cone Diffuser, Price ASCDA w/ Insulated Back Panel	1, 2, 3
C	Return Air	Ref. Plan	24" X 24" Perforated, Ducted Return, Titus PAR	1, 2, 3
D	Vent	N/A	12" x 12" filter return air grille, Price 60FH w/ 1" filter media	1, 3
E	Vent	N/A	24" x 24" filter return air grille, Price 60FH w/ 1" filter media	1, 3

- Notes:**
1. Seal perimeter of diffusers/grilles to prevent moisture migration from attic space, as applicable
 2. R value of insulated back panels/plenums to exceed R-8
 3. Coordinate with owner / architect for color and finish

WATER HEATER SCHEDULE

TAG	Type	Make	Model	Range of Flow (GPM)	Temperature Rise (F)	Natural Gas		Power			Remarks
						Maximum (MBH)	FT3/Hr.	VAC	Ph	Amps	
WH-1	Instant, Noncondensing	Rinnai	RE1991	0.13 -9.8	35	199	193	120	1	4	1

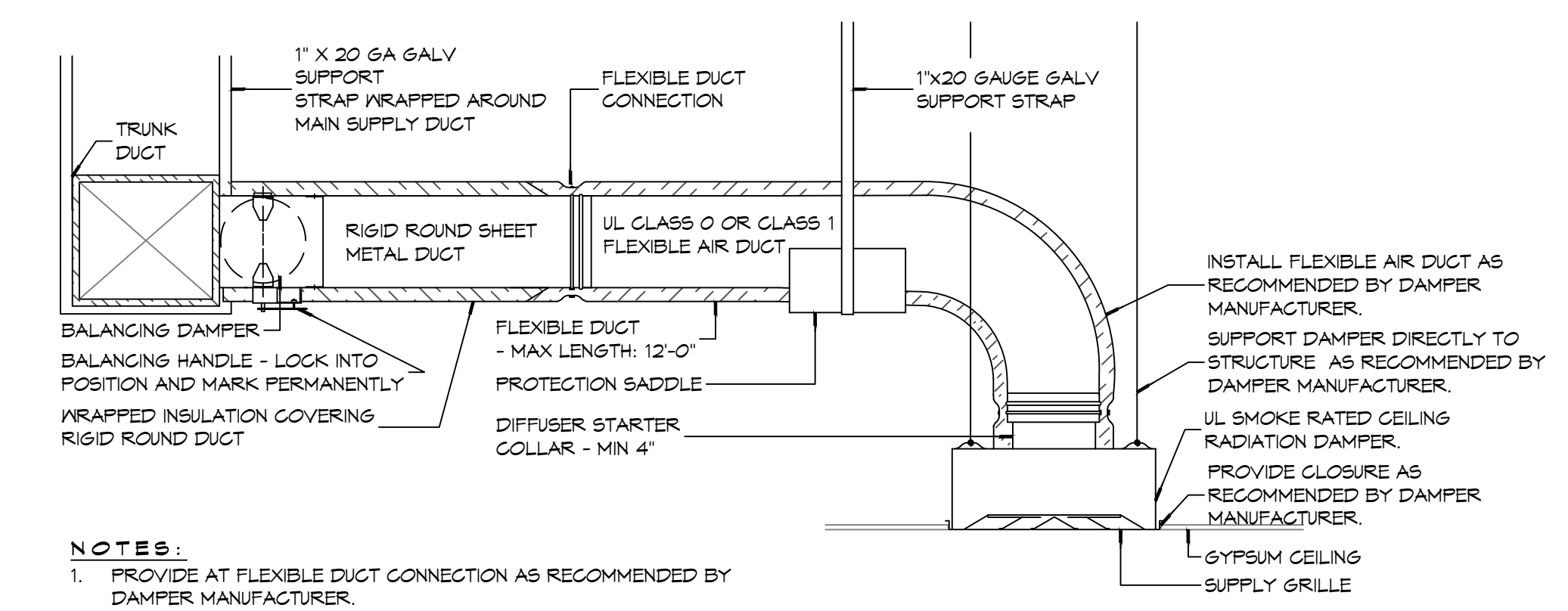
- NOTES:**
1. Install units in accordance with NFPA and manufacturer's recommendations.

GENERAL HVAC NOTES

1. ALL MECHANICAL WORK SHALL BE COORDINATED WITH THE WORK OF OTHER TRADES.
2. VERIFY ROUTING OF ALL WORK ON SITE.
3. HVAC CONTRACTOR REPLACE ALL EQUIPMENT FILTERS AT THE TIME OF POSSESSION OF THE PROJECT BY THE OWNER, USING ONLY NEW FILTERS OF THE PROPER SIZE AND TYPE.
4. CONTRACTOR SHALL LEAVE THE HVAC SYSTEM IN PROPER WORKING ORDER AND SHALL GUARANTEE SAME FOR A PERIOD OF TWELVE (12) MONTHS FROM THE DATE OF SUBSTANTIAL COMPLETION.
5. PROVIDE A MINIMUM 4" THICK LEVEL PRE-CAST CONCRETE PAD FOR PACKAGED UNITS AT GRADE. THE SIZE OF THE PRE-CAST PAD WILL BE REQUIRED TO ACCOMMODATE THE FOOT PRINT OF THE UNIT AND BE ACCEPTABLE FOR MOUNTING.
6. WHERE MOUNTING HEIGHTS ARE NOT INDICATED OR DIMENSIONED, INSTALL MECHANICAL SERVICES AND OVERHEAD EQUIPMENT TO PROVIDE THE MAXIMUM HEADROOM POSSIBLE.

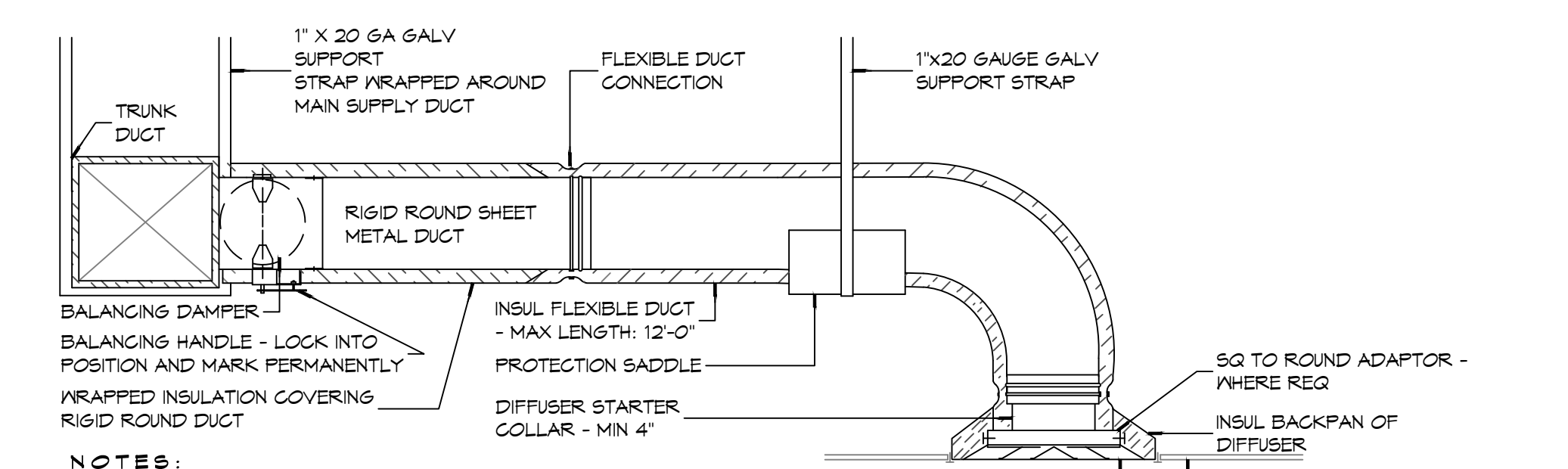
DAMMON ENGINEERING, INC.
LOUISIANA & MISSISSIPPI
Chief Engineer: Brian Mistich, PE
554 Old Spanish Trail
Slidell, LA 70458
www.dammonengineering.com
info@dammonengineering.com
PH: 985-649-5832

#	DESCRIPTION	DATE



- NOTES:**
1. PROVIDE AT FLEXIBLE DUCT CONNECTION AS RECOMMENDED BY DAMPER MANUFACTURER.
 2. PROVIDE MINIMUM 4" COLLARS FOR ATTACHMENT OF THE FLEXIBLE DUCT TO ROUND DUCT, DAMPERS AND DIFFUSERS.
 3. BAND RIGID ROUND DUCT INSULATION TO DUCT AND PROVIDE TAPE FOR INSULATION OVERLAP.

(B) TYPICAL FIRE/SMOKE RATED CEILING DIFFUSER



- NOTES:**
1. PROVIDE AT FLEXIBLE DUCT CONNECTION "PANDUIT" DRAWBAND ON THE INTERIOR FLEXIBLE DUCT HELIX.
 2. PROVIDE MINIMUM 4" COLLARS FOR ATTACHMENT OF THE FLEXIBLE DUCT TO ROUND DUCT, DAMPERS AND DIFFUSERS.
 3. BAND RIGID ROUND DUCT INSULATION TO DUCT AND PROVIDE TAPE FOR INSULATION OVERLAP.

(A) TYPICAL NON-RATED CEILING DIFFUSER

**NEW FIRE STATION #10
ST. TAMMANY FIRE PROTECTION
DISTRICT No. 1**
248 LAKESHORE VISTA BLVD
SLIDELL, LA 70461
JOB No: 2519 DATE: 12-05-2025
DRAWN BY: CKD CHECKED BY: BAK

SHEET TITLE:
HVAC DETAILS AND SCHEDULES

DRAWING NUMBER:
M102

SHEET No: 34 of 37

LUMINAIR SCHEDULE

ID	DESCRIPTION	MOUNTING	MFR	PART #	FINISH	LAMPS #	LAMP TYPE	WATTAGE	FIXTURE NOTES	INSTALLATION NOTES
EM-1	EMERGENCY LIGHT	WALL	PHILIPS	F1WIC	WHITE	2	35W MR16	2.5W		
EM-2	EMERGENCY LIGHT	WALL	BARRON	LL60	BLACK	2	HIT	10.8W		
EX-1	EXIT LIGHT	CEILING	PHILIPS	45VLRICALM	WHITE	1	LED	2.5W		
EX-2	EXIT LIGHT	WALL	PHILIPS	CXL36W	WHITE	1	LED	3.7W		
F-1	CEILING FAN	CEILING	MODERN FAN COMPANY	IND-6V525VNLNC	6ALV	0	N/A	25W		
F-1A	CEILING FAN W/ LIGHT	CEILING	MODERN FAN COMPANY	IND-6V525V48INC	6ALV	1	75W 64 HALOGEN	160W		
L-1	LINEAR FLUORESCENT	SURFACE	LITHONIA LIGHTING	AVSM 2 54T5HO SBL DLS MVOLT	WHITE	2	T5	54W		
L-10	PENDANT	RECESSED	COOPER INDUSTRIES	P461-071	CHROME	1	60W T10 MED BASE	60W	CLEAR BULB	
L-11	PENDANT	RECESSED	COOPER INDUSTRIES	P460-071	CHROME	1	60W T10 MED BASE	60W	CLEAR BULB	
L-12	WALL SCONCE	WALL	PHILIPS	106L-2-39LA-NH-UNV-BRP	PAINTED		LED			SEE EXT ELEV FOR MOUNTING HT
L-13	WALL SCONCE	WALL	PHILIPS	RIN-100-IN-S-C-1-RB6NH	COLOR TBD	1	LED	100	SIZE 2	SEE EXT ELEV FOR MOUNTING HT
L-14	VAPORPROOF FIXTURE	WALL	TEXAS FLUORESCENTS	VPMINGSL	METAL	1	A19 75W SOFT WHITE	75W		
L-2	RECESSED CAN	RECESSED	COOPER INDUSTRIES	HTICAT	WHITE	1	UTILITECT PRO LPAR30/5K/LED65	20W	WHITE BAFFLE AND TRIM	
L-3	HIGH BAY LIGHT	PENDANT	TEXAS FLUORESCENTS	HBC432M23MY	-	4	48" T8	25W		
L-4	VAPORPROOF FIXTURE	CEILING	TEXAS FLUORESCENTS	VPCINGSL	METAL	1	A19 75W SOFT WHITE	75W		
L-5	VANITY LIGHT	WALL	NUVO LIGHTING	60-906	BRUSHED NICKEL	2	F1T20	17W		SEE INT ELEV
L-6	RECESSED CAN	RECESSED	COOPER INDUSTRIES	HTICAT	WHITE	1	UTILITECT PRO LPAR30/5K/LED65	20W	VAPOR PROOF COVER	
L-7	SURFACE FLUORESCENT	CEILING	TEXAS FLUORESCENTS	SHUCPF232MY	WHITE	2	F32T8	64W		
L-8	OUTDOOR LIGHT	GROUND	UNIVERSAL LIGHTING SYSTEMS	UC1300AZ	ALUM/BRONZE	1	MR16LED 40"	7W		MNT IN CONC
L-9	FLUORESCENT STRIP	CEILING	LITHONIA	LEBL4 LP835	WHITE	2	LED	7W		

GENERAL LIGHTING NOTES

- ALL WORK SHALL COMPLY WITH APPLICABLE NATIONAL, STATE, AND LOCAL CODES, RULES, REGULATIONS, AND REQUIREMENTS OF THE SERVICE UTILITY COMPANY.
- GENERAL CONTRACTOR SHALL NOTIFY THE ARCHITECT IMMEDIATELY IF ANY CONFLICTS OCCUR BETWEEN LIGHTING AND ANY OTHER TRADE. DO NOT PROCEED WITH INSTALLATION IN THAT AREA UNTIL CONFLICT HAS BEEN RESOLVED TO THE SATISFACTION OF THE ARCHITECT AND ENGINEER.
- REFER TO ARCHITECTURAL DRAWINGS FOR EXACT LOCATION AND MOUNTING INSTRUCTIONS FOR ALL LIGHT FIXTURES. NOTIFY THE ARCHITECT AND ENGINEER OF ANY DISCREPANCIES BETWEEN THESE PLANS AND THE ARCHITECTURAL PLANS RELATING TO QUANTITY, TYPE AND LOCATION OF DEVICES AND/OR FIXTURES.
- WHEN SPECIFIC LIGHT FIXTURE HAS BEEN SPECIFIED IN THE FIXTURE SCHEDULE, ELECTRICAL SHALL PROVIDE COMPLETE ASSEMBLY INCLUSIVE ALL PARTS AND HARDWARE TO INSURE PROPER FUNCTIONING FIXTURE.
- ALL CONDUCTORS SHALL BE #12 AWG UNLESS NOTED OTHERWISE.
- ALL 120V RUNS LONGER THAN 60 FEET SHALL BE #10 AWG AND 277V RUNS LONGER THAN 150 FEET SHALL BE #10 AWG UNLESS NOTED OTHERWISE.
- ALL CONDUCTORS SHALL BE COPPER.
- WHERE CONDUCTOR SIZES ARE NOTED ON DRAWINGS, THAT WIRE SIZE SHALL BE THROUGH THE ENTIRE RUN UNLESS OTHERWISE NOTED.
- MOUNTED LIGHT SWITCHES 48" AFF UNLESS NOTED OTHERWISE ON ARCHITECTURAL DRAWINGS.
- ALL GANGED SWITCHES SHALL HAVE A COMMON SEAMLESS FACEPLATE. EACH MULTI-GANGED BOX SHALL BE NO MORE THAN SIX (6) SWITCHES WIDE. WHERE MORE THAN SIX (6) SWITCHES ARE SHOWN AT ONE (1) LOCATION, ADDITIONAL MULTI-GANGED BOXES SHALL BE STACKED VERTICALLY AND THE WIDTH OF THE MULTI-GANGED SHALL BE AS EVEN AS POSSIBLE.
- EACH DIMMER SWITCH SHALL HAVE A WATTING RATING 25% HIGHER THAN THE TOTAL WATTAGE OF ALL LIGHTS TO BE CONTROLLED BY THE DIMMER. DIMMER SIZES 600, 1000, 1500, AND 2000 WATTS, LUTRON NOVA T-STAR. WHERE SWITCHES ARE GANGED WITH DIMMERS, THE SWITCHES SHALL ALSO BE LUTRON NOVA T-STAR, FLUORESCENT AND LOW VOLTAGE DIMMERS SHALL BE LUTRON NOVA T-STAR.
- WHERE FLUORESCENT FIXTURES ARE SHOWN TO BE DIMMED, THE FIXTURES SHALL HAVE DIMMING TYPE BALLASTS WHICH ARE COMPATIBLE WITH THE SPECIFIED DIMMERS.
- WHERE LED FIXTURES/LAMPS ARE SHOWN TO BE DIMMED, THE DIMMER SHALL BE COMPATIBLE WITH THE FIXTURE/LAMP SPECIFIED OR PROVIDED.
- ALL EMERGENCY LIGHT FIXTURES SHALL HAVE 90 MINUTE BATTERY BACKUP WITH INTEGRAL TEST BUTTON AND SHALL BURN CONTINUOUSLY.
- ALL FLUORESCENT FIXTURES THAT UTILIZE DOUBLE-ENDED LAMPS AND CONTAIN BALLASTS SHALL BE PROVIDED WITH A DISCONNECTING MEANS IN ACCORDANCE WITH NEC 410.736.

LEGEND

	EMERGENCY LIGHT FIXTURE		ELECTRIC PANEL BOARD
	EXIT LIGHT FIXTURE - WALL MOUNTED		CIRCUIT HOME RUN
	EXIT LIGHT FIXTURE - CEILING MOUNTED		WALL MTD SPEAKER - PROVIDE RATED HOUSING FOR RATED WALLS WHERE INDICATED
	CEILING FAN		CEILING MTD SPEAKER - PROVIDE RATED HOUSING FOR RATED CEILING WHERE INDICATED
	CEILING MTD FLOOR STRIP FIXTURE		EXTEND TO FIXTURE(S) NOT SHOWN - SEE NOTE
	RECESSED CEILING LIGHT FIXTURE		LIGHT SWITCH 120V COMMERCIAL GRADE
	CEILING HUNG FLOOR STRIP FIXTURE		LIGHT SWITCH - 3-WAY 120V COMMERCIAL GRADE
	SURFACE MOUNTED LIGHT FIXTURE		LIGHT SWITCH - DIMMER 120V COMMERCIAL GRADE
	WALL MOUNTED LIGHT FIXTURE		PROVIDED BY MC
	CEILING MTD FLOOR FIXTURE		
	OUTDOOR LIGHT ON PHOTO TIMER - MTD IN GROUND		
	PENDANT LIGHT FIXTURE		
	EXHAUST FAN - SEE MECH		

ELECTRICAL LOAD SUMMARY

WASHINGTON/ST. TAMMANY POWER COMPANY	
PROJECT NAME:	FIRE DISTRICT #1 FIRE STATION 10
PROJECT ADDRESS:	2145 LAKESHORE VISTA BLVD
CITY/TOWN:	SLIDELL, LOUISIANA
INTENDED USER:	FIRE STATION
REQ SERV:	120 / 240 V 1Ø PHASE 3 WIRES
SERV ENTR SIZE:	400 AMPS
HVAC TONNAGE:	10.5 TONS
LARGEST MOTOR:	N/A HP
TOTAL BUILDING SQ FT:	6526 SF
INDIVIDUAL UNIT SQUARE FOOTAGE:	N/A SF (MULT OCCUPANCY)
INDIVIDUAL UNIT DESIGNATION:	N/A (MULT OCCUPANCY)
LOAD SOURCE	
BUILDING LIGHTING	9.0
ELECTRIC WATER HEATING	18.0
HEAT PUMPS	-
SUPPLEMENTAL HEAT SYSTEMS	-
AIR COND CONDENSING UNITS	11.6
ELEC HEATING (PRIMARY) - AHU'S	27.8
COOKING	12.2
REFRIGERATION	3.9
RECEPTACLES (STANDARD)	20.1
RECEPTACLES (COMPUTER)	2.0
TOTAL MOTORS (EXCLUDE HVAC)	12.2
EXTERIOR LIGHTING	29.0
MISCELLANEOUS - CEILING FANS	0.2
OTHER (SPECIFY)	4.5

DAMMON ENGINEERING, INC.
LOUISIANA & MISSISSIPPI
www.dammonengineering.com
info@dammonengineering.com
PH: 985.649.5832

Chief Engineer: Brian Mistich, PE
554 Old Spanish Trail
Slidell, LA 70458

REVISIONS	DATE
1	5-XX-2015



**NEW FIRE STATION #10
ST. TAMMANY FIRE PROTECTION DISTRICT NO. 1**

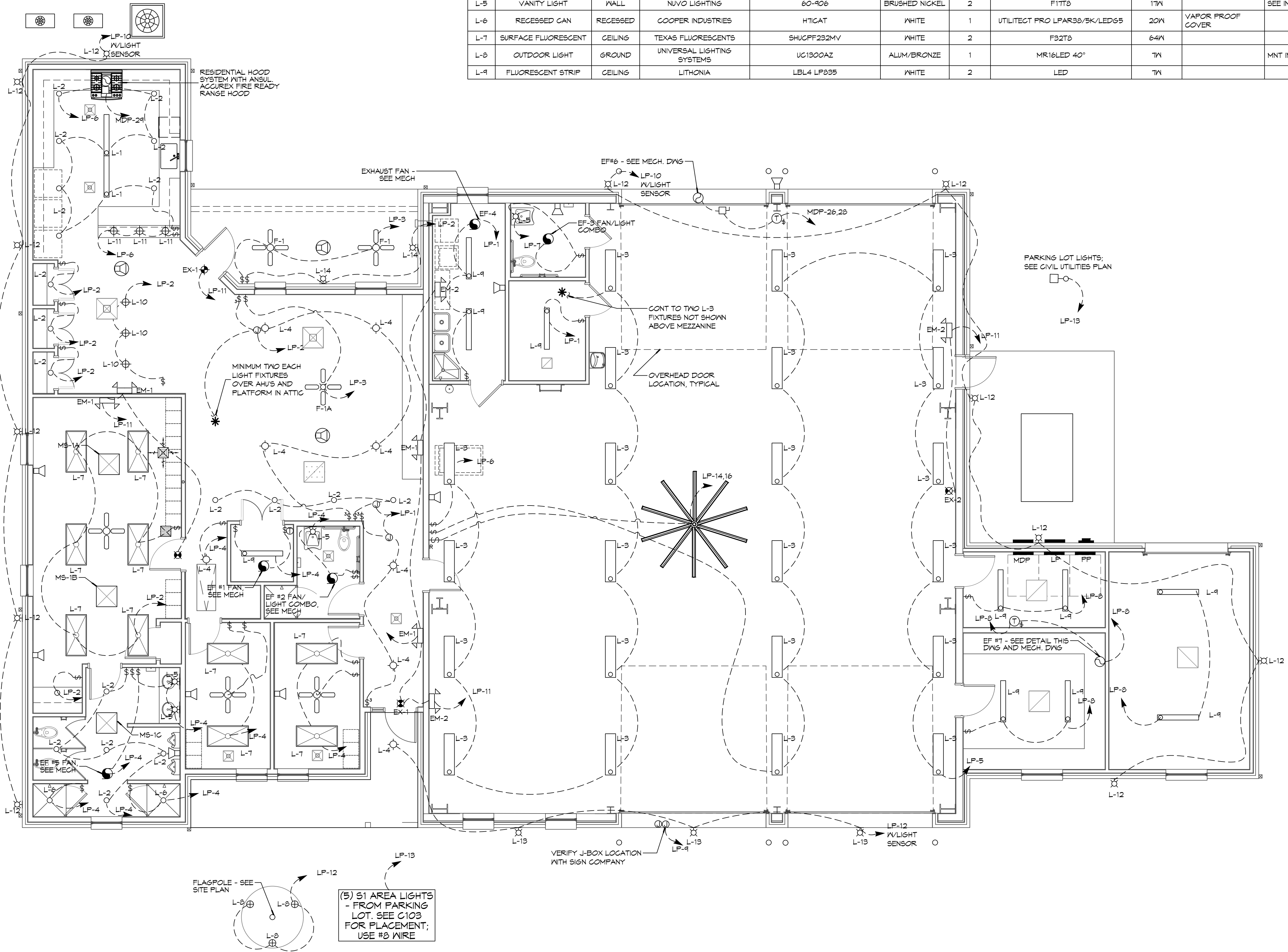
2145 LAKESHORE VISTA BLVD
SLIDELL, LA 70461

JOB No: 2519 DATE: 12-05-2025
DRAWN BY: CKD CHECKED BY: BAK

SHEET TITLE:
ELECTRICAL PLAN - LIGHTING AND LOAD SUMMARY

DRAWING NUMBER:
E102

SHEET No: 36 of 37



1 ELECTRICAL PLAN - LIGHTING
SCALE: 3/16" = 1'-0"

