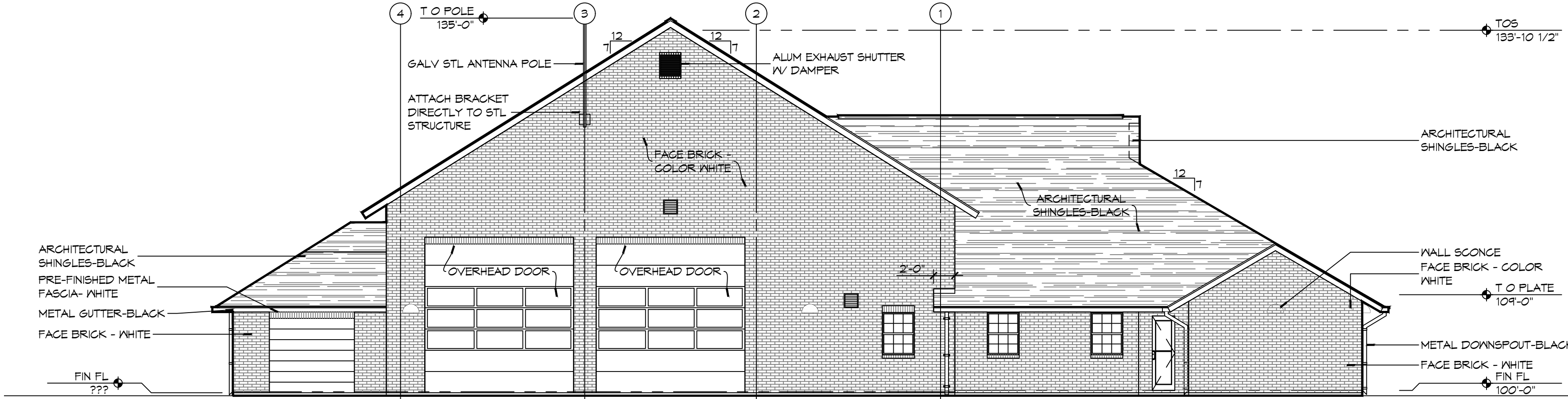


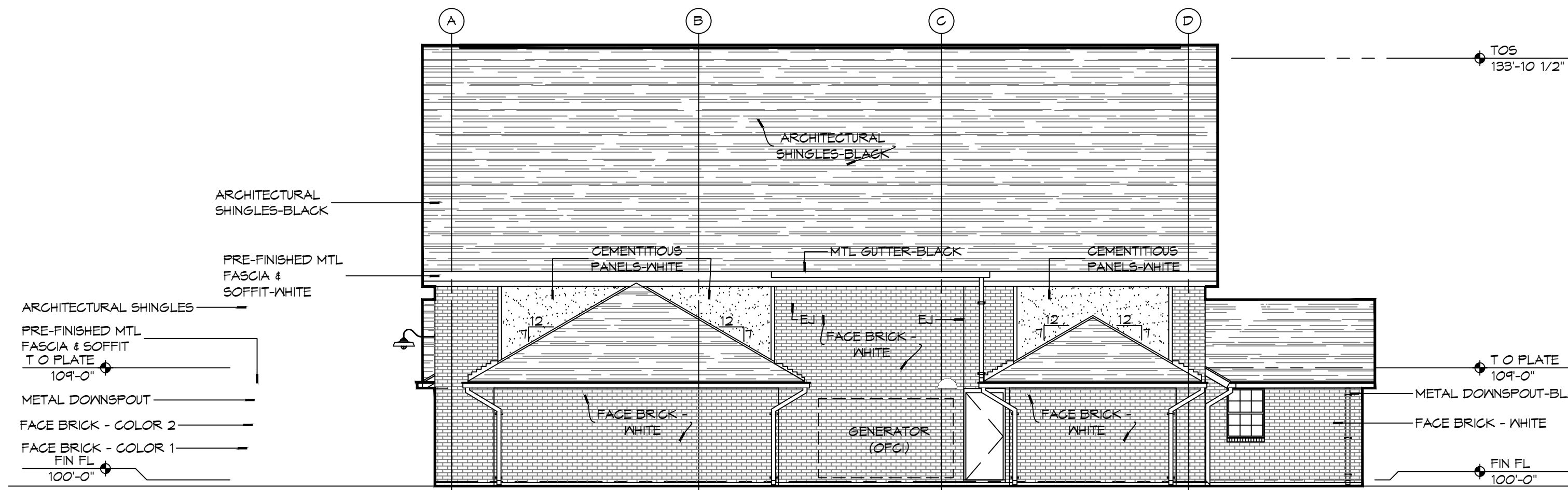
9 EXTERIOR ELEVATION
SCALE: 1/8" = 1'-0"

NORTH



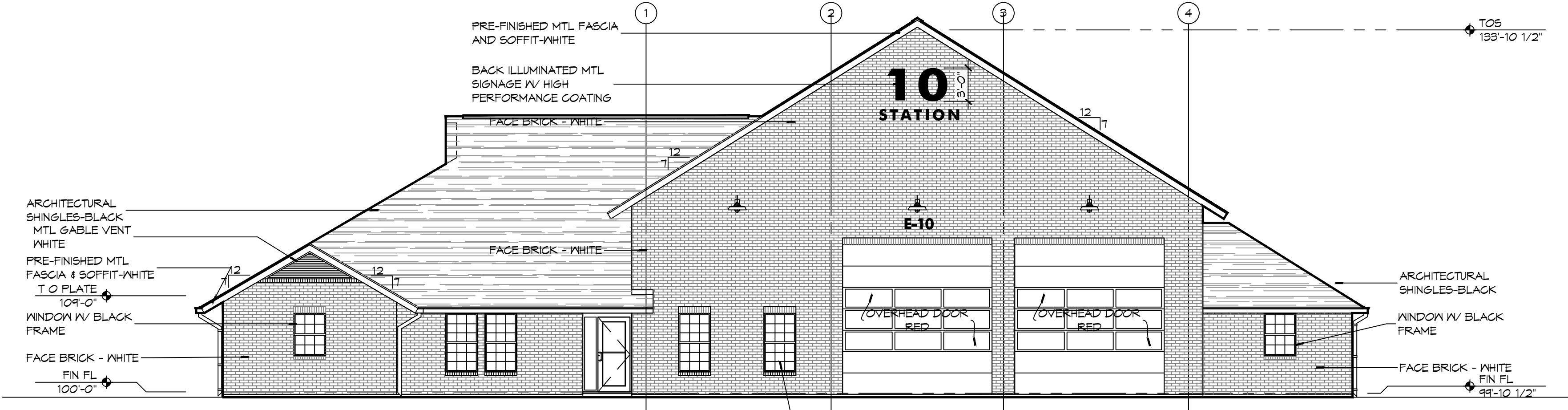
8 EXTERIOR ELEVATION
SCALE: 1/8" = 1'-0"

EAST



7 EXTERIOR ELEVATION
SCALE: 1/8" = 1'-0"

SOUTH



6 EXTERIOR ELEVATION
SCALE: 1/8" = 1'-0"

WEST

GENERAL ELEVATION NOTES

1. REFER TO SHEET A101 FOR WINDOW TYPE ELEVATIONS.
2. WINDOW TYPES NOT INDICATED THIS SHEET ARE IDENTIFIED ON SHEET A501.
3. CONTRACTOR SHALL REVIEW LOCATIONS AND INTENT OF ALL MASONRY EXPANSION/CONTROL JOINTS WITH ARCHITECT PRIOR TO CONSTRUCTION. REFER TO ELEVATIONS FOR INDICATED JOINT LOCATIONS.
4. SEE S/A501 FOR TYPICAL MASONRY EXPANSION JOINT DETAILS.
5. MASONRY DIMENSIONS ARE NOMINAL.
6. ALL FLASHING SHALL BE DONE IN STRICT ACCORDANCE WITH THE FLASHING MANUFACTURER'S PUBLISHED SPECIFICATIONS AND DETAILS. THIS TO INCLUDE AMOUNT OF OVERLAP AND INSTALLATION OF DRIP EDGES, IF REQUIRED.
7. LINE OF FINISH GRADE ON EXTERIOR ELEVATIONS IS APPROXIMATE AND ARE INTENDED FOR REFERENCE PURPOSES ONLY. REFER TO CIVIL GRADING PLAN FOR FINISH GRADE ELEVATIONS.
8. SEE SHEET A101 FOR EXPANSION JOINTS (EJ) IN HIDDEN LOCATIONS AND NOT SHOWN ON THIS SHEET.

DAMMON ENGINEERING, INC.
LOUISIANA & MISSISSIPPI
www.dammonengineering.com
info@dammonengineering.com
PH: 985.649.5832
Chief Engineer: Brian Mistich, PE
554 Old Spanish Trail
Slidell, LA 70458

#	DESCRIPTION	REVISIONS	DATE

SEAL:

NEW FIRE STATION #10
ST. TAMMANY FIRE PROTECTION DISTRICT NO. 1
LAKESHORE VISTA BLVD
SLIDELL, LA 70458
JOB No: 2025 DATE: 04-11-2025
DRAWN BY: CKD CHECKED BY: JMS

SHEET TITLE:
BUILDING ELEVATIONS

DRAWING NUMBER:
A201