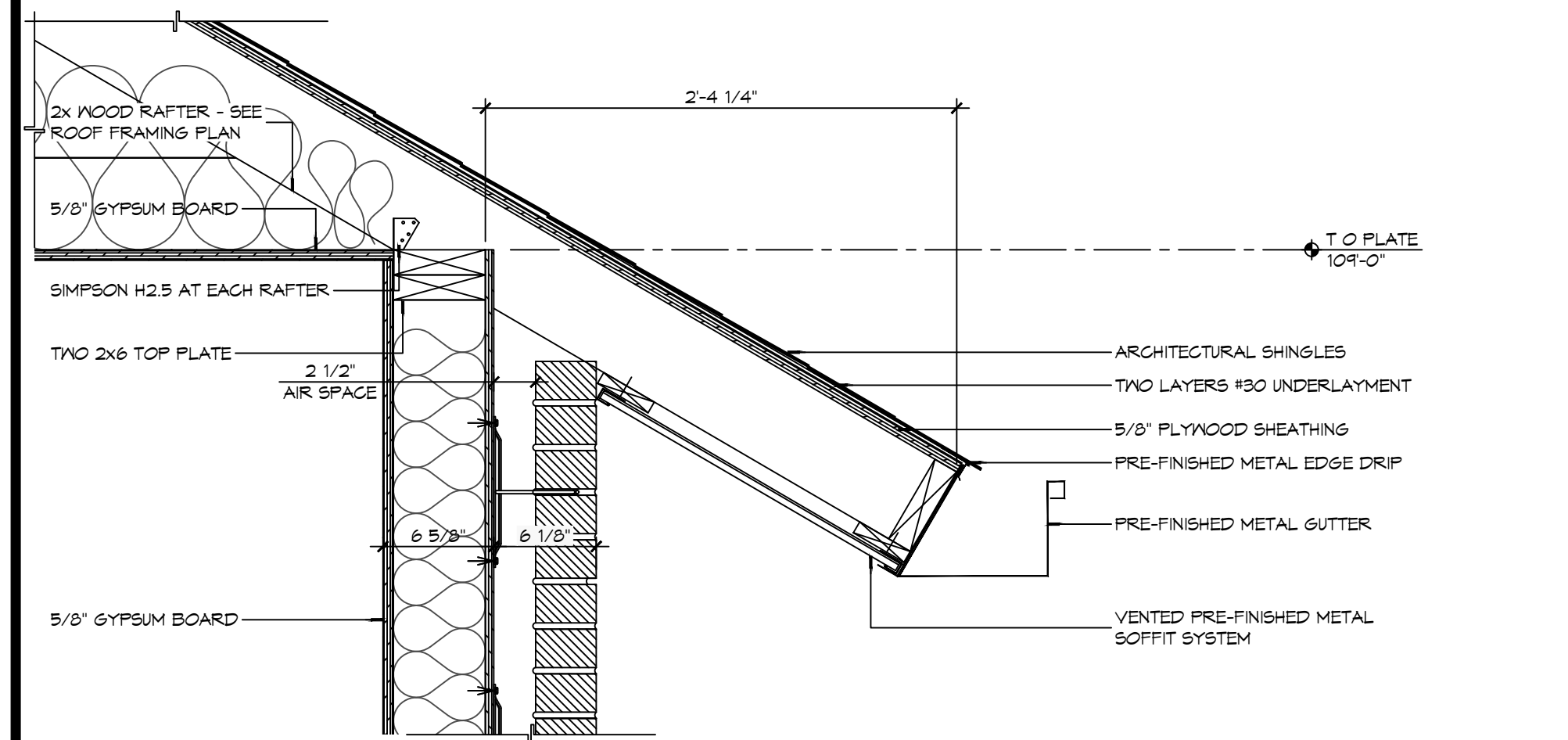
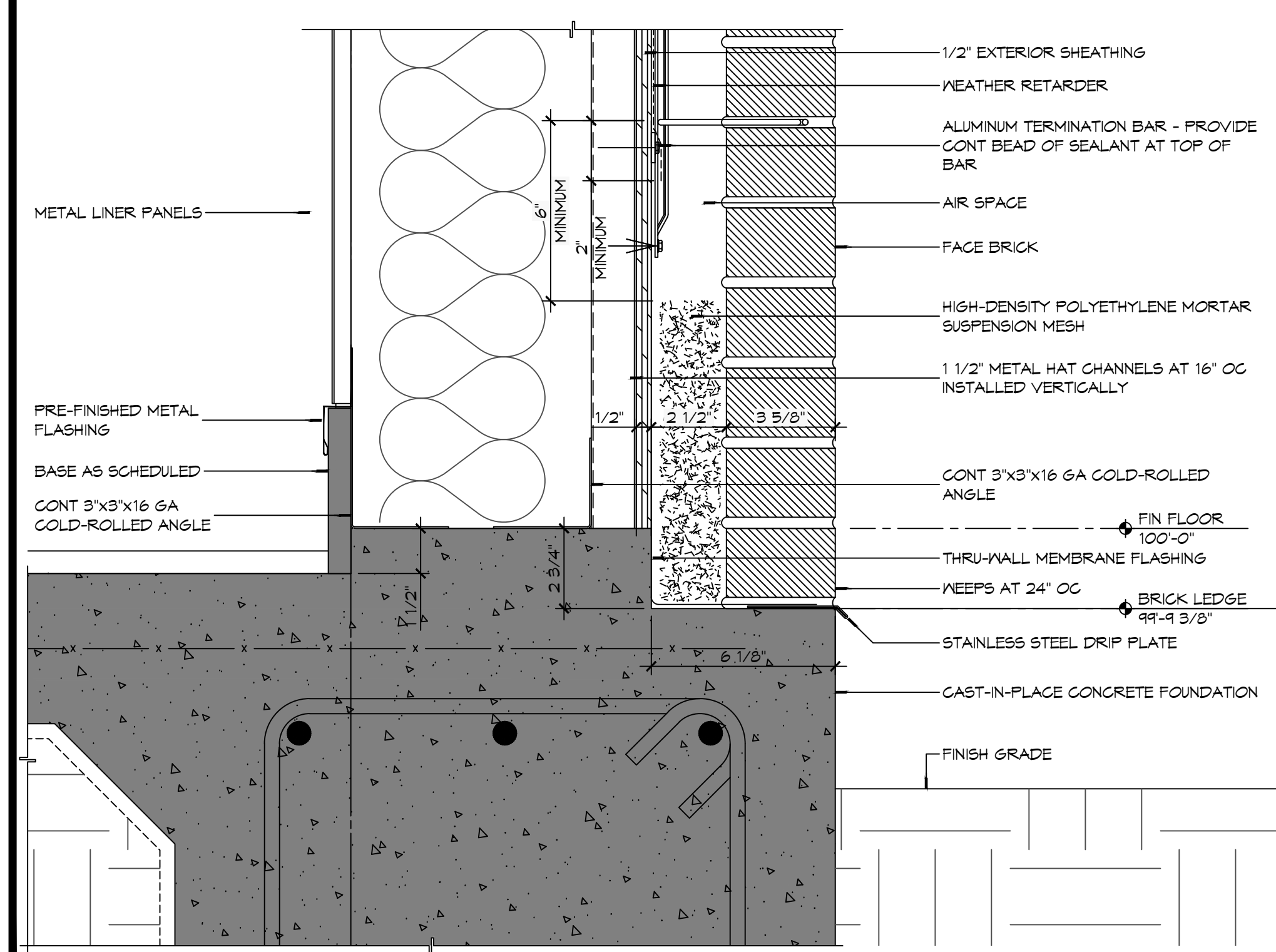


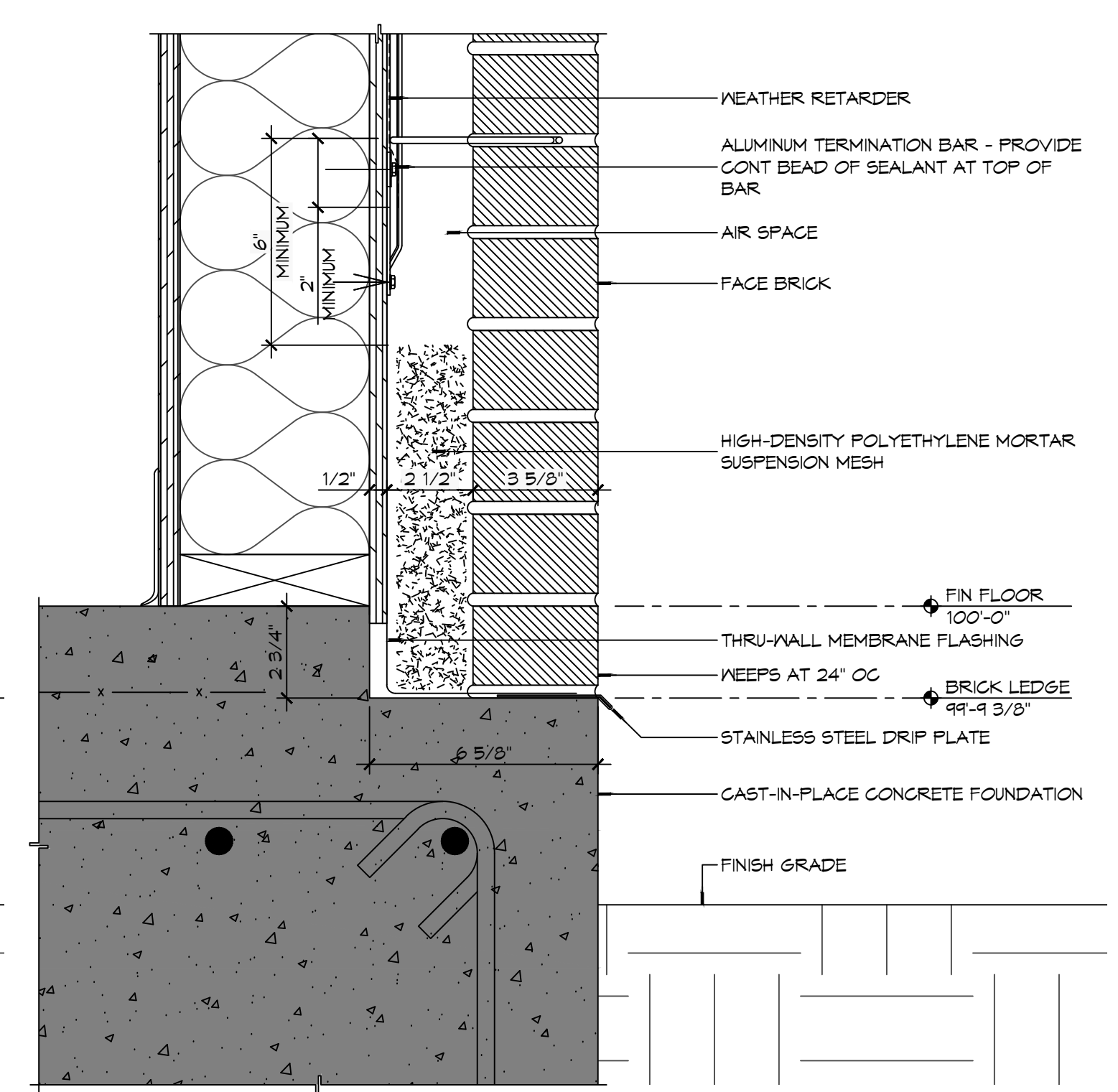
FILE NAME: A:\Projects\2019 - Fire Station 403\Drawings\General\Drawings\A311 - Wall Sections & Details.dwg PLOT DATE: 8/26/2020 12:13:03 PM



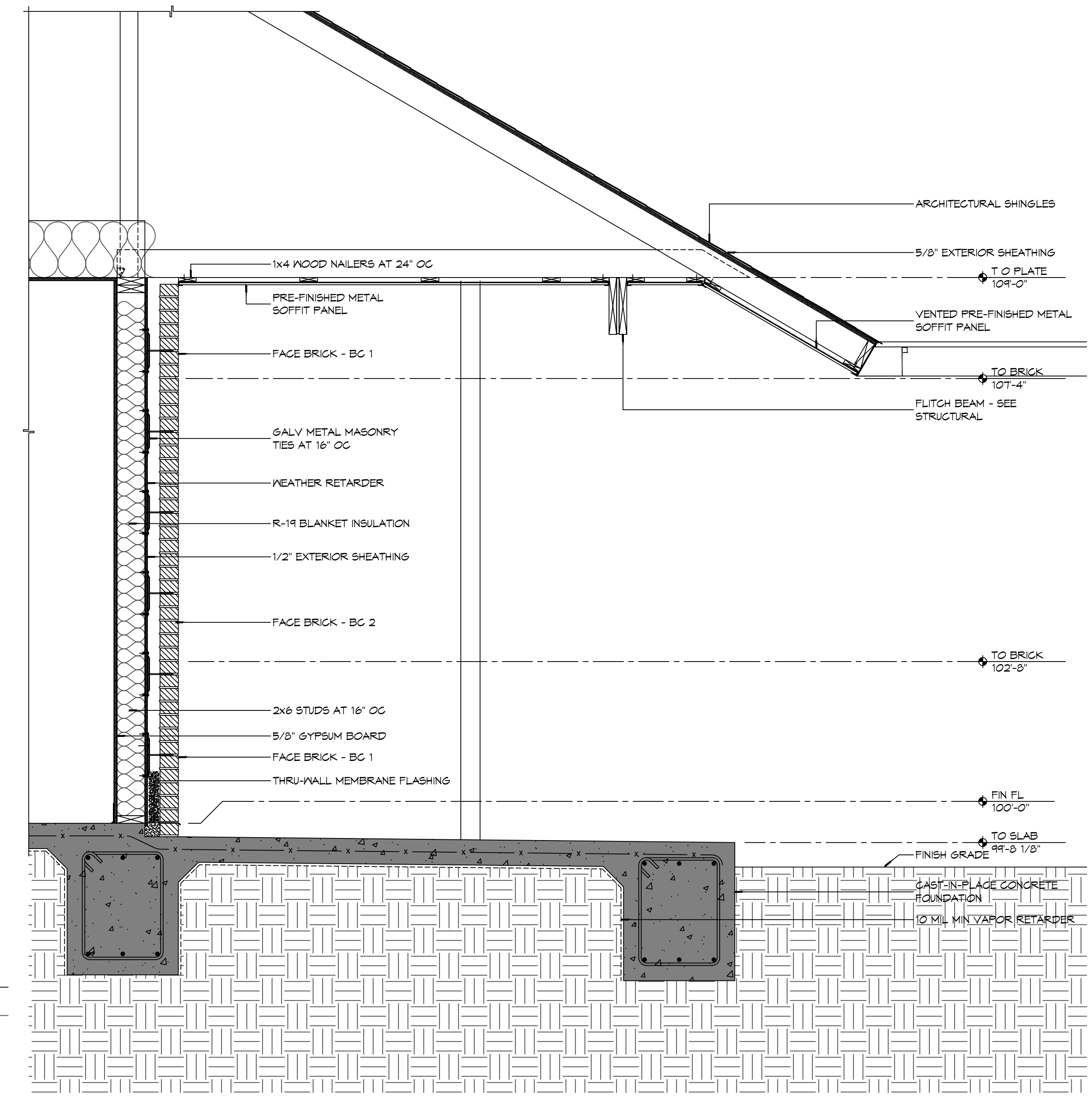
7 DETAIL
SCALE: 1/4" = 1'-0"
TYPICAL EAVE OVERHANG



6 DETAIL
SCALE: 3/4" = 1'-0"
TYPICAL MASONRY BASE FLASHING AT METAL BUILDING



5 DETAIL
SCALE: 3/4" = 1'-0"
TYPICAL MASONRY BASE FLASHING



1 WALL SECTION
SCALE: 3/4" = 1'-0"

#	DESCRIPTION	DATE

SEAL:

NEW FIRE STATION #10
ST. TAMMANY FIRE PROTECTION DISTRICT No. 1
 2148 LAKESHORE VISTA BLVD
 SLIDELL, LA 70461
 JOB No: 2519 DATE: 12-05-2025
 DRAWN BY: CKD CHECKED BY: JMS

SHEET TITLE:
 WALL SECTIONS AND DETAILS

DRAWING NUMBER:

A311