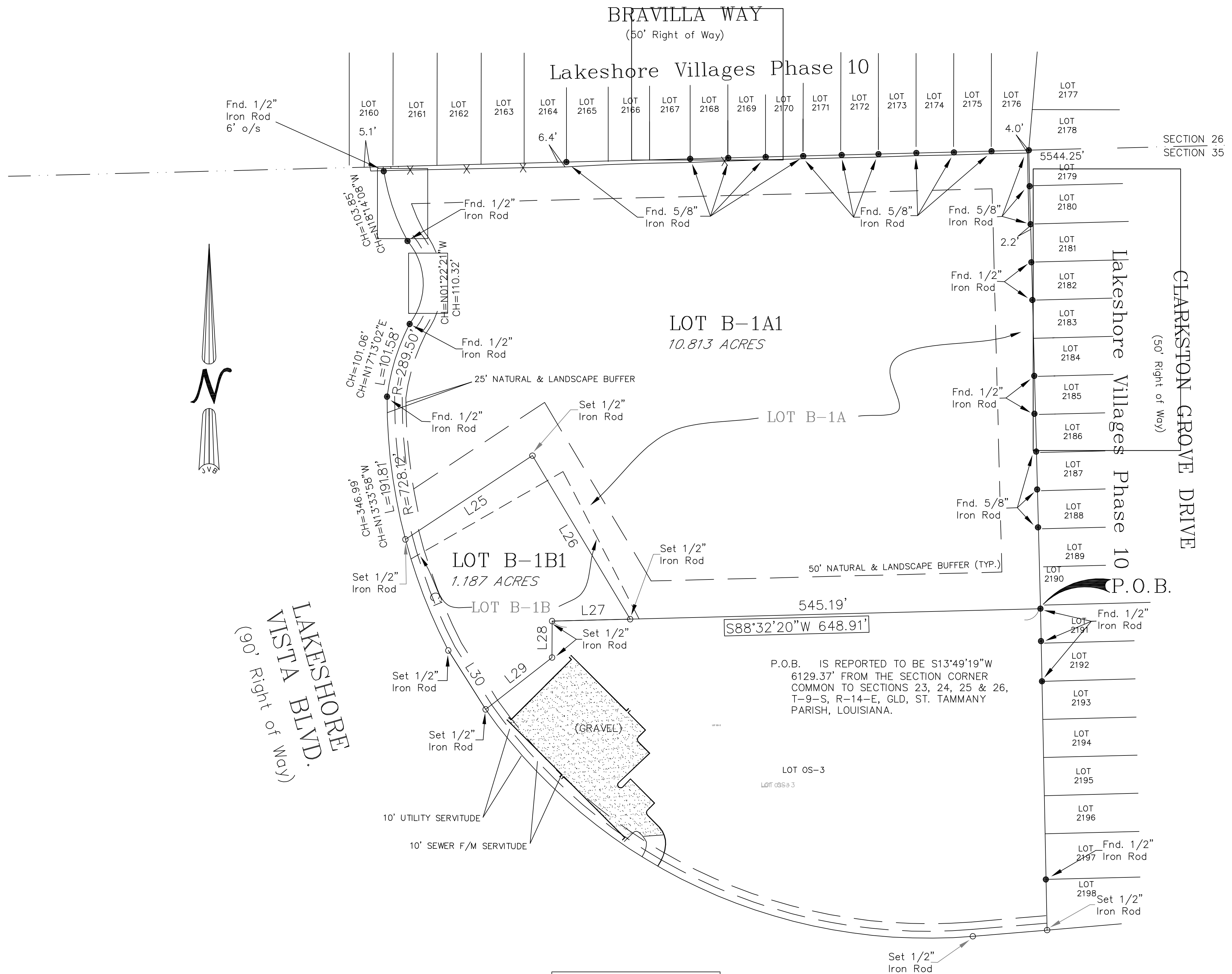


NOTE: BEARINGS AND COORDINATES REFER TO THE LOUISIANA STATE PLANE COORDINATE SYSTEM (LOUISIANA SOUTH 1702 GEOID 18) BASED ON NAD83 WITH GPS RTN ACCESSED ON 06/23/2025.

REFERENCE: 1.) A Survey Plat by this firm Dated 06/18/2024 Survey # 20240214.  
2.) A plat by Michael Blanchard dated 8/27/21, Map File No.6053.



**APPROVED:**

\_\_\_\_\_  
SECRETARY OF PLANNING & ZONING COMMISSION DATE

\_\_\_\_\_  
DIRECTOR OF ENGINEERING DATE

\_\_\_\_\_  
CLERK OF COURT DATE

\_\_\_\_\_  
DATE FILED FILE NO.

TOTAL AREA: 000,000 SQ. FT. OR 00.000 ACRES

Line Table		
Line #	Length	Direction
L25	202.14'	N56°34'18"E
L26	253.19'	S30°50'42"E
L27	103.72'	S88°32'20"W
L28	48.36'	S00°04'15"W
L29	111.96'	S52°01'28"W
L30	92.65'	N32°18'24"W

Curve Table				
Curve #	Length	Radius	Chord Bearing	Chord Distance
C1	154.80'	728.12'	N20°57'55"W	154.51'