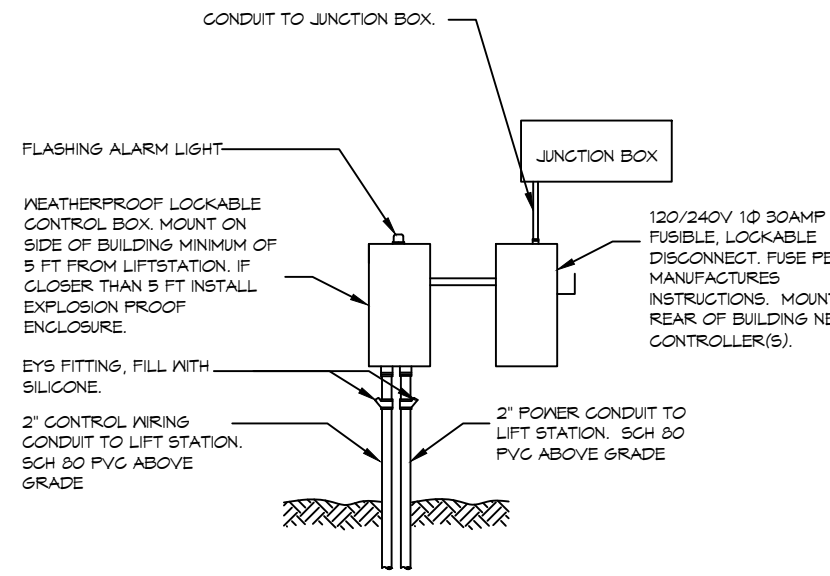


ELEC. WORK - (A) - (B) - (C) - (D) - (E) - (F) - (G) - (H) - (I) - (J) - (K) - (L) - (M) - (N) - (O) - (P) - (Q) - (R) - (S) - (T) - (U) - (V) - (W) - (X) - (Y) - (Z) - AA - AB - AC - AD - AE - AF - AG - AH - AI - AJ - AK - AL - AM - AN - AO - AP - AQ - AR - AS - AT - AU - AV - AW - AX - AY - AZ - BA - BB - BC - BD - BE - BF - BG - BH - BI - BJ - BK - BL - BM - BN - BO - BP - BQ - BR - BS - BT - BU - BV - BW - BX - BY - BZ - CA - CB - CC - CD - CE - CF - CG - CH - CI - CJ - CK - CL - CM - CN - CO - CP - CQ - CR - CS - CT - CU - CV - CW - CX - CY - CZ - DA - DB - DC - DD - DE - DF - DG - DH - DI - DJ - DK - DL - DM - DN - DO - DP - DQ - DR - DS - DT - DU - DV - DW - DX - DY - DZ - EA - EB - EC - ED - EE - EF - EG - EH - EI - EJ - EK - EL - EM - EN - EO - EP - EQ - ER - ES - ET - EU - EV - EW - EX - EY - EZ - FA - FB - FC - FD - FE - FF - FG - FH - FI - FJ - FK - FL - FM - FN - FO - FP - FQ - FR - FS - FT - FU - FV - FW - FX - FY - FZ - GA - GB - GC - GD - GE - GF - GG - GH - GI - GJ - GK - GL - GM - GN - GO - GP - GQ - GR - GS - GT - GU - GV - GW - GX - GY - GZ - HA - HB - HC - HD - HE - HF - HG - HH - HI - HJ - HK - HL - HM - HN - HO - HP - HQ - HR - HS - HT - HU - HV - HW - HX - HY - HZ - IA - IB - IC - ID - IE - IF - IG - IH - II - IJ - IK - IL - IM - IN - IO - IP - IQ - IR - IS - IT - IU - IV - IW - IX - IY - IZ - JA - JB - JC - JD - JE - JF - JG - JH - JI - JJ - JK - JL - JM - JN - JO - JP - JQ - JR - JS - JT - JU - JV - JW - JX - JY - JZ - KA - KB - KC - KD - KE - KF - KG - KH - KI - KJ - KL - KM - KN - KO - KP - KQ - KR - KS - KT - KU - KV - KW - KX - KY - KZ - LA - LB - LC - LD - LE - LF - LG - LH - LI - LJ - LK - LL - LM - LN - LO - LP - LQ - LR - LS - LT - LU - LV - LW - LX - LY - LZ - MA - MB - MC - MD - ME - MF - MG - MH - MI - MJ - MK - ML - MM - MN - MO - MP - MQ - MR - MS - MT - MU - MV - MW - MX - MY - MZ - NA - NB - NC - ND - NE - NF - NG - NH - NI - NJ - NK - NL - NM - NO - NP - NQ - NR - NS - NT - NU - NV - NW - NX - NY - NZ - OA - OB - OC - OD - OE - OF - OG - OH - OI - OJ - OK - OL - OM - ON - OO - OP - OQ - OR - OS - OT - OU - OV - OW - OX - OY - OZ - PA - PB - PC - PD - PE - PF - PG - PH - PI - PJ - PK - PL - PM - PN - PO - PP - PQ - PR - PS - PT - PU - PV - PW - PX - PY - PZ - QA - QB - QC - QD - QE - QF - QG - QH - QI - QJ - QK - QL - QM - QN - QO - QP - QQ - QR - QS - QT - QU - QV - QW - QX - QY - QZ - RA - RB - RC - RD - RE - RF - RG - RH - RI - RJ - RK - RL - RM - RN - RO - RP - RQ - RR - RS - RT - RU - RV - RW - RX - RY - RZ - SA - SB - SC - SD - SE - SF - SG - SH - SI - SJ - SK - SL - SM - SN - SO - SP - SQ - SR - SS - ST - SU - SV - SW - SX - SY - SZ - TA - TB - TC - TD - TE - TF - TG - TH - TI - TJ - TK - TL - TM - TN - TO - TP - TQ - TR - TS - TT - TU - TV - TW - TX - TY - TZ - UA - UB - UC - UD - UE - UF - UG - UH - UI - UJ - UK - UL - UM - UN - UO - UP - UQ - UR - US - UT - UY - UZ - VA - VB - VC - VD - VE - VF - VG - VH - VI - VJ - VK - VL - VM - VN - VO - VP - VQ - VR - VS - VT - VU - VV - VW - VX - VY - VZ - WA - WB - WC - WD - WE - WF - WG - WH - WI - WJ - WK - WL - WM - WN - WO - WP - WQ - WR - WS - WT - WU - WV - WW - WX - WY - WZ - XA - XB - XC - XD - XE - XF - XG - XH - XI - XJ - XK - XL - XM - XN - XO - XP - XQ - XR - XS - XT - XU - XV - XW - XX - XY - XZ - YA - YB - YC - YD - YE - YF - YG - YH - YI - YJ - YK - YL - YM - YN - YO - YP - YQ - YR - YS - YT - YU - YV - YW - YX - YY - YZ - ZA - ZB - ZC - ZD - ZE - ZF - ZG - ZH - ZI - ZJ - ZK - ZL - ZM - ZN - ZO - ZP - ZQ - ZR - ZS - ZT - ZU - ZV - ZW - ZX - ZY - ZZ - AA - AB - AC - AD - AE - AF - AG - AH - AI - AJ - AK - AL - AM - AN - AO - AP - AQ - AR - AS - AT - AU - AV - AW - AX - AY - AZ - BA - BB - BC - BD - BE - BF - BG - BH - BI - BJ - BK - BL - BM - BN - BO - BP - BQ - BR - BS - BT - BU - BV - BW - BX - BY - BZ - CA - CB - CC - CD - CE - CF - CG - CH - CI - CJ - CK - CL - CM - CN - CO - CP - CQ - CR - CS - CT - CU - CV - CW - CX - CY - CZ - DA - DB - DC - DD - DE - DF - DG - DH - DI - DJ - DK - DL - DM - DN - DO - DP - DQ - DR - DS - DT - DU - DV - DW - DX - DY - DZ - EA - EB - EC - ED - EE - EF - EG - EH - EI - EJ - EK - EL - EM - EN - EO - EP - EQ - ER - ES - ET - EU - EV - EW - EX - EY - EZ - FA - FB - FC - FD - FE - FF - FG - FH - FI - FJ - FK - FL - FM - FN - FO - FP - FQ - FR - FS - FT - FU - FV - FW - FX - FY - FZ - GA - GB - GC - GD - GE - GF - GG - GH - GI - GJ - GK - GL - GM - GN - GO - GP - GQ - GR - GS - GT - GU - GV - GW - GX - GY - GZ - HA - HB - HC - HD - HE - HF - HG - HH - HI - HJ - HK - HL - HM - HN - HO - HP - HQ - HR - HS - HT - HU - HV - HW - HX - HY - HZ - IA - IB - IC - ID - IE - IF - IG - IH - II - IJ - IK - IL - IM - IN - IO - IP - IQ - IR - IS - IT - IU - IV - IW - IX - IY - IZ - JA - JB - JC - JD - JE - JF - JG - JH - JI - JJ - JK - JL - JM - JN - JO - JP - JQ - JR - JS - JT - JU - JV - JW - JX - JY - JZ - KA - KB - KC - KD - KE - KF - KG - KH - KI - KJ - KL - KM - KN - KO - KP - KQ - KR - KS - KT - KU - KV - KW - KX - KY - KZ - LA - LB - LC - LD - LE - LF - LG - LH - LI - LJ - LK - LL - LM - LN - LO - LP - LQ - LR - LS - LT - LU - LV - LW - LX - LY - LZ - MA - MB - MC - MD - ME - MF - MG - MH - MI - MJ - MK - ML - MM - MN - MO - MP - MQ - MR - MS - MT - MU - MV - MW - MX - MY - MZ - NA - NB - NC - ND - NE - NF - NG - NH - NI - NJ - NK - NL - NM - NO - NP - NQ - NR - NS - NT - NU - NV - NW - NX - NY - NZ - OA - OB - OC - OD - OE - OF - OG - OH - OI - OJ - OK - OL - OM - ON - OO - OP - OQ - OR - OS - OT - OU - OV - OW - OX - OY - OZ - PA - PB - PC - PD - PE - PF - PG - PH - PI - PJ - PK - PL - PM - PN - PO - PP - PQ - PR - PS - PT - PU - PV - PW - PX - PY - PZ - QA - QB - QC - QD - QE - QF - QG - QH - QI - QJ - QK - QL - QM - QN - QO - QP - QQ - QR - QS - QT - QU - QV - QW - QX - QY - QZ - RA - RB - RC - RD - RE - RF - RG - RH - RI - RJ - RK - RL - RM - RN - RO - RP - RQ - RR - RS - RT - RU - RV - RW - RX - RY - RZ - SA - SB - SC - SD - SE - SF - SG - SH - SI - SJ - SK - SL - SM - SN - SO - SP - SQ - SR - SS - ST - SU - SV - SW - SX - SY - SZ - TA - TB - TC - TD - TE - TF - TG - TH - TI - TJ - TK - TL - TM - TN - TO - TP - TQ - TR - TS - TT - TU - TV - TV - TW - TX - TY - TZ - UA - UB - UC - UD - UE - UF - UG - UH - UI - UJ - UK - UL - UM - UN - UO - UP - UQ - UR - US - UT - UY - UZ - VA - VB - VC - VD - VE - VF - VG - VH - VI - VJ - VK - VL - VM - VN - VO - VP - VQ - VR - VS - VT - VU - VV - VW - VX - VY - VZ - WA - WB - WC - WD - WE - WF - WG - WH - WI - WJ - WK - WL - WM - WN - WO - WP - WQ - WR - WS - WT - WU - WV - WW - WX - WY - WZ - XA - XB - XC - XD - XE - XF - XG - XH - XI - XJ - XK - XL - XM - XN - XO - XP - XQ - XR - XS - XT - XU - XV - XW - XX - XY - XZ - YA - YB - YC - YD - YE - YF - YG - YH - YI - YJ - YK - YL - YM - YN - YO - YP - YQ - YR - YS - YT - YU - YV - YW - YX - YY - YZ - ZA - ZB - ZC - ZD - ZE - ZF - ZG - ZH - ZI - ZJ - ZK - ZL - ZM - ZN - ZO - ZP - ZQ - ZR - ZS - ZT - ZU - ZV - ZW - ZX - ZY - ZZ

2 DETAIL
SCALE: NTS



LIFT STATION

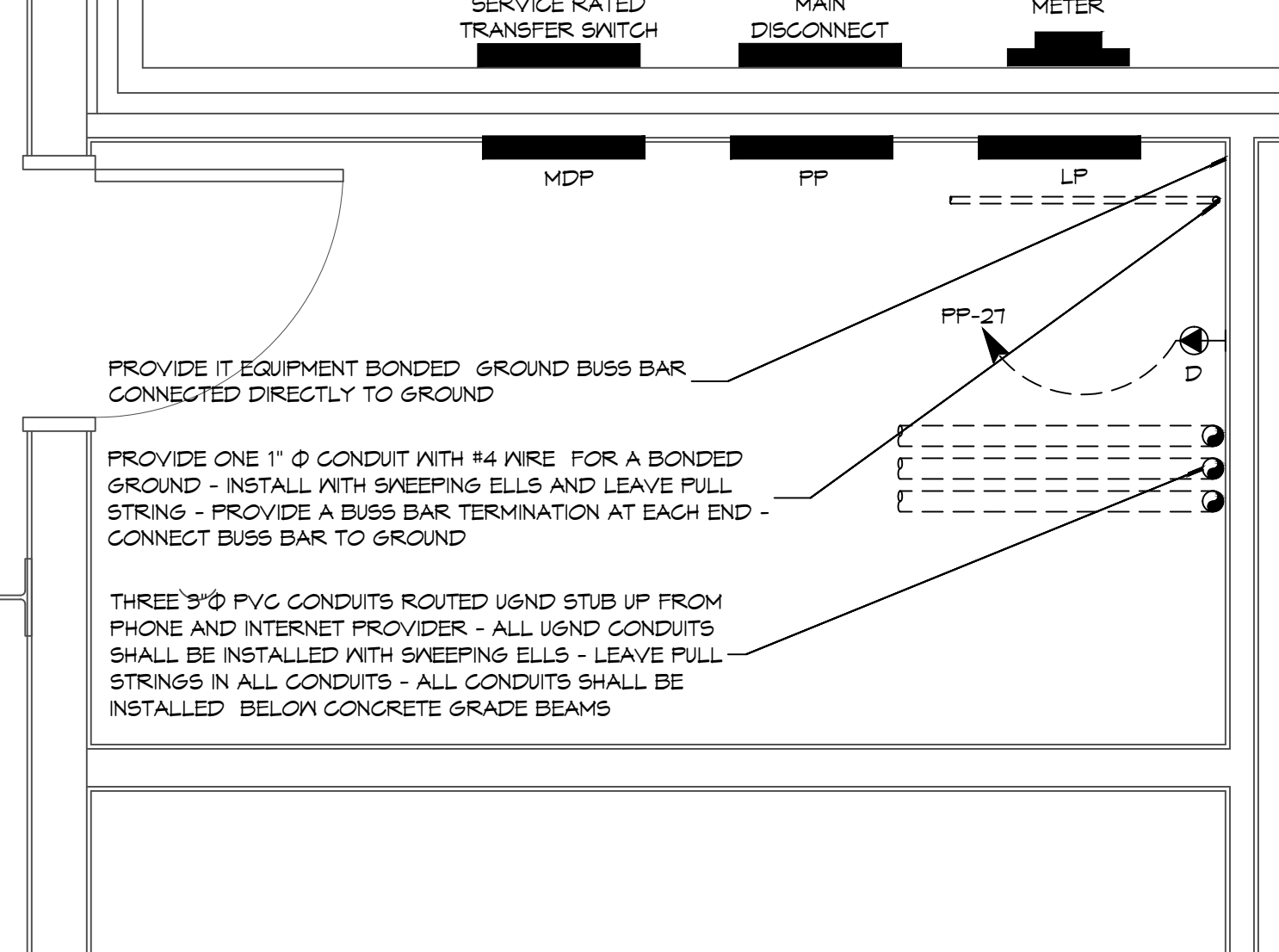
5 EA 3" Ø PVC CONDUITS ROUTED USND STUB UP FROM PHONE AND INTERNET PROVIDER. ALL USND CONDUITS SHALL BE INSTALLED WITH SNEEPING ELLS. LEAVE PULL STRINGS IN ALL CONDUITS. ALL CONDUITS SHALL BE INSTALLED BELOW CONCRETE GRADE BEAMS.

NOTE: COORDINATE OUTLET LOCATIONS WITH OWNER'S EQUIP LOCATION AND REQUIREMENTS

PROVIDE A 1" Ø CONDUIT WITH #4 GND WIRE FOR A BONDED GROUND. INSTALL WITH SNEEPING ELLS AND LEAVE PULL STRING. PROVIDE A BUSS BAR TERMINATION AT EACH END. ENSURE THE BUSS BAR IN IT CLOSET MEASURES LESS THAN 1 OHM TO GROUND.

PROVIDE 2 - 3" CONDUIT IN WALL CAVITY FROM 18" AFF TO ABOVE CEILING

4 POWER PLAN DETAIL
SCALE: 1/2" = 1'-0"



PROVIDE IT EQUIPMENT BONDED GROUND BUSS BAR CONNECTED DIRECTLY TO GROUND

THREE 3" Ø PVC CONDUITS ROUTED USND STUB UP FROM PHONE AND INTERNET PROVIDER - ALL USND CONDUITS SHALL BE INSTALLED WITH SNEEPING ELLS - LEAVE PULL STRINGS IN ALL CONDUITS - ALL CONDUITS SHALL BE INSTALLED BELOW CONCRETE GRADE BEAMS

3 POWER PLAN DETAIL
SCALE: 1/2" = 1'-0"

MECHANICAL/ELECTRICAL ROOM

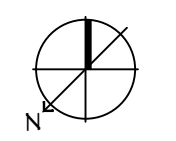
GENERAL ELEC POWER NOTES

- ALL WORK SHALL CONFORM TO THE LATEST EDITION OF THE NATIONAL ELECTRICAL CODE, THE GOVERNING ELECTRICAL CODE AND ALL OTHER INSPECTION DEPARTMENTS HAVING JURISDICTION. OBTAIN CERTIFICATES OR APPROVAL WHERE REQUIRED. ELECTRICAL CONTRACTOR SHALL VERIFY ALL WIRE AND CONDUIT SIZES FOR MECHANICAL EQUIPMENT TO BE INSTALLED.
- ALL MATERIALS FURNISHED SHALL BE NEW AND SHALL BE U.L. LISTED.
- THE DRAWINGS INDICATE SIZE AND GENERAL LOCATION OF WORK. SCALE DIMENSIONS SHALL NOT BE USED. THE EXACT LOCATION OF ALL LIGHTING FIXTURES, RECEPTACLES AND TELEPHONE OUTLETS, ETC. SHALL BE DETERMINED BY ACTUAL CONDITIONS IN THE FIELD.
- PRIOR TO BIDDING, CONTRACTOR SHALL VISIT THE JOB SITE AND FAMILIARIZE THEMSELVES WITH THE EXISTING CONDITIONS.
- ELECTRICAL CONTRACTOR SHALL COORDINATE HIS WORK WITH OTHER TRADES AND WITH OTHER CONTRACTORS WHOSE WORK MAY AFFECT THIS INSTALLATION.
- ELECTRICAL CONTRACTOR SHALL COORDINATE INCOMING ELECTRICAL SERVICE WITH UTILITY COMPANY AND INCLUDE IN HIS BID ALL CHARGES AND FEES INCURRED IN MODIFICATIONS.
- ELECTRICAL CONTRACTOR SHALL COORDINATE THE TELEPHONE INSTALLATION WITH THE TELEPHONE COMPANY AND THE GENERAL CONTRACTOR.
- WHERE MORE THAN ONE SWITCH OCCURS IN THE SAME LOCATION, THEY SHALL BE INSTALLED IN A GANG TYPE BOX UNDER ONE COVER PLATE.
- ELECTRICAL CONTRACTOR, BEFORE INSTALLING ANY OF THE WORK, SHALL SEE THAT IT DOES NOT INTERFERE WITH CLEARANCES REQUIRED FOR FINISHED CEILINGS, FINISHED FLOORS, PARTITIONS, WALLS, ETC. AS SHOWN IN THE ARCHITECTURAL DRAWINGS AND DETAILS. IF ANY WORK IS INSTALLED AND IT LATER DEVELOPS THAT SUCH DETAILS OR DESIGN CANNOT BE FOLLOWED, THE CONTRACTOR, AT HIS OWN EXPENSE, SHALL MAKE SUCH CHANGES IN THE WORK AS DIRECTED BY THE ARCHITECT, AS WELL AS TO PERMIT THE INSTALLATION OF THE ARCHITECTURAL WORK AS SHOWN ON THE PLANS AND DETAILS.
- PERFORM TEST REQUIRED BY THE OWNER OR THE ENGINEER IN CONNECTION WITH THE OPERATION OF THE ELECTRICAL SYSTEM IN THE BUILDING. ALL TESTS SHALL BE MADE IN ACCORDANCE WITH THE LATEST STANDARD OF THE IEEE AND THE NATIONAL ELECTRICAL CODE.
- MINIMUM CONDUCTOR SIZE SHALL BE #12, 600V INSULATION. MINIMUM SIZE CONDUIT SHALL BE 3/4" ELECTRICAL METALLIC TUBING (EMT) FOR INTERIOR USE, AND 3/4" RIGID ALUMINUM FOR EXTERIOR USE. USE NON-METALLIC CABLE (NMC) CABLE COPPER, FOR LIGHTS AND RECEPTACLE CIRCUITS IN WOOD FRAME CONSTRUCTION AREAS ONLY; IN STEEL FRAMING AREAS THE USE OF EMT (MINIMUM) IS REQUIRED. EXTERIOR FITTINGS SHALL BE CAST BOXES AND COVERS. INTERIOR FITTINGS SHALL BE STAMPED BOXES.
- CONTRACTOR SHALL INSTALL WIRING AND OTHER CIRCUIT COMPONENTS TO MATCH EQUIPMENT ACTUALLY INSTALLED.
- INSTALL GROUND FAULT RECEPTACLES AT RECEPTACLE LOCATIONS WITHIN 5' OF SINKS OR LAVATORIES, AND AT EXTERIOR LOCATIONS. EXTERIOR RECEPTACLES SHALL ALSO BE WATERPROOF.
- BONDING AND GROUNDING SHALL BE IN ACCORDANCE WITH NFPA 70-250-63, NFPA 250-23, 250-71 & 250-72.
- GROUND NEUTRAL IN ACCORDANCE WITH NFPA 70-250-230.
- FUSES SHALL BE ITC CLASS K5, 250 VOLT, 200,000 AMP INTERRUPTING CAP.
- PROVIDE SERVICES OF A FIRE/SMOKE DETECTION AND ALARM COMPANY TO DESIGN AND INSTALL ALARM SYSTEM TO MEET REQUIREMENTS OF THE STATE FIRE MARSHALL AND THE FIRE DISTRICT.
- EXTERIOR LIGHTING SHALL BE SHADED OR INWARDLY DIRECTED IN SUCH A MANNER SO THAT NO DIRECT LIGHTING OR GLARE IS CAST BEYOND THE PROPERTY LINE. THE INTENSITY OF SUCH LIGHTING SHALL NOT EXCEED ONE FOOT CANDLE AS MEASURED AT THE ADJUTING PROPERTY LINE.
- ALL ELECTRICAL, MECHANICAL AND PLUMBING PENETRATING FIRE PARTITIONS SHALL BE FIRE CAULKED. (PENETRATIONS THROUGH RATED CONSTRUCTION SHALL BE SEALED WITH A MATERIAL CAPABLE OF PREVENTING THE PASSAGE OF FLAMES AND HOT GASES WHEN TESTED IN ACCORDANCE WITH ASTM-E814.
- VERIFY ELECTRICAL CONNECTIONS PER MANUFACTURER'S RECOMMENDATIONS.
- ALL RECEPTACLES AND SWITCHES ARE TO HAVE WEATHER PROOF COVERS IN APPARATUS BAY. 50% OF ALL EXTERIOR WEATHER PROOF COVERS SHALL BE IN-USE COVERS.

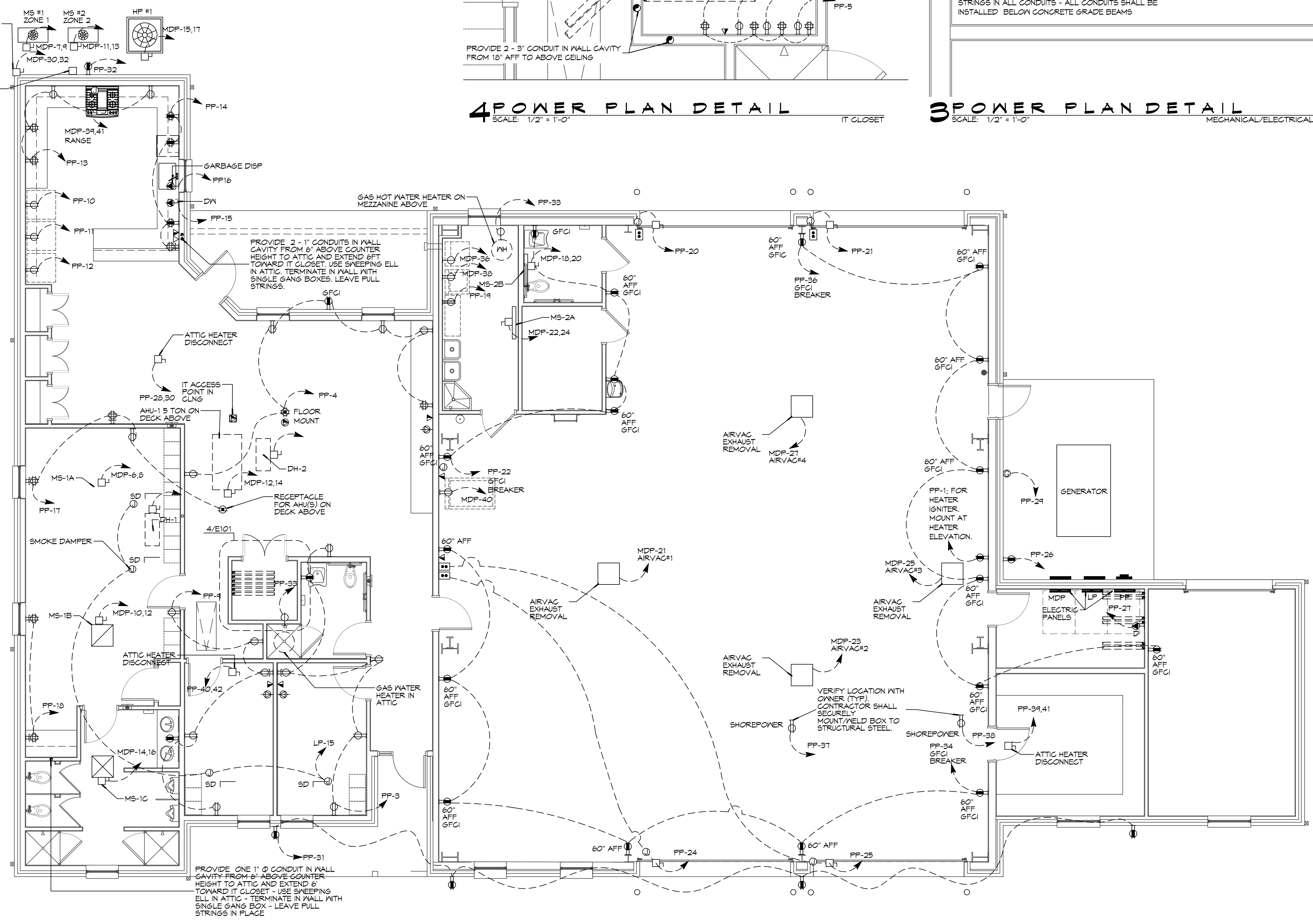
LEGEND

- | SYMB | DESCRIPTION |
|------|--|
| ⊕ | STANDARD 120V DUPLEX RECEPTACLE, NEMA 5-2 OR 18" AFF (UNLESS OTHERWISE NOTED) |
| ⊕ | SINGLE-POLE DEDICATED RECEPTACLE - REFER TO PANEL SCHEDULE FOR CIRCUIT SIZE |
| ⊕ | GFCI DUPLEX RECEPTACLE |
| ⊕ | GFCI QUAD RECEPTACLE |
| ⊕ | 220V ELECTRIC DRYER RECEPTACLE - MOUNTED AT 30" AFF |
| ⊕ | 220V DEDICATED GFCI RECEPTACLE |
| ⊕ | WEATHER-PROOF GFCI DUPLEX RECEPTACLE MOUNTED AT 30" AFF (UNLESS OTHERWISE NOTED) |
| ⊕ | STANDARD 120V DUPLEX RECEPTACLE - FLOOR MOUNTED |
| ⊕ | STANDARD QUAD RECEPTACLE - WALL-MOUNTED |
| ⊕ | STANDARD QUAD RECEPTACLE - FLOOR MOUNTED |
| ⊕ | 125V 15 AMP DUPLEX-USB 5VDC 3 AMP HUBBELL USB CHARGER RECEPTACLE |
| ⊕ | 125V 15 AMP QUAD-USB 5VDC 3 AMP HUBBELL USB CHARGER RECEPTACLE |
| ⊕ | JUNCTION BOX |
| ⊕ | GENERATOR BATTERY CHARGER GFI OUTLET |
| ⊕ | 2-BUTTON PUSH BUTTON STATION |
| ⊕ | COAX-CABLE CONNECTION FOR TELEVISION |
| ⊕ | WALL MOUNTED DATA OUTLET |
| ⊕ | FLOOR DATA OUTLET |
| ⊕ | POWER DISCONNECT |
| ⊕ | GAS WATER HEATER ON DECK OR MEZZANINE ABOVE - SIZE AS NOTED ON PLAN |
| ⊕ | AIR CONDITIONING AIR HANDLING UNIT ON DECK OR MEZZANINE ABOVE. SEE MECHANICAL DRAWINGS |
| ⊕ | AIR CONDITIONING CONDENSER UNIT ON CONCRETE PAD, SEE MECHANICAL DRAWINGS |

- NOTES:**
- CONNECT ALL EMERGENCY/EXIT LIGHT FIXTURES TO NEAREST CONSTANT POWER SOURCE.
 - THE #2 NEXT TO A RECEPTACLE OR DATA OUTLET DESIGNATES THAT THERE ARE TO BE TWO OUTLETS AT THAT LOCATION. ONE OVER THE OTHER (ONE HIGH & ONE LOW ON WALL). EXAMPLE: ⊕#2 OR ⊕#2
 - REFER TO INTERIOR ELEVATIONS FOR MOUNTING HEIGHT AND ORIENTATION OF OUTLETS MOUNTED ABOVE COUNTERTOPS.
 - CAULK ALL PENETRATIONS WITH FIRE CAULK.



1 ELECTRICAL PLAN - POWER
SCALE: 3/16" = 1'-0"



DAMMON ENGINEERING, INC.
LOUISIANA & MISSISSIPPI

Chief Engineer: Brian M. Storch, PE
554 Old Spanish Trail
Slidell, LA 70688
www.dammonengineering.com
info@dammonengineering.com
PH: 985.649.5832

#	DESCRIPTION	DATE



**NEW FIRE STATION #10
ST. TAMMANY FIRE PROTECTION
DISTRICT NO. 1**

2146 LAKESHORE VISTA BLVD
SLIDELL, LA 70661

JOB No: 2519 DATE: 12-05-2025
DRAWN BY: GKD CHECKED BY: BAK

SHEET TITLE:
POWER PLAN

DRAWING NUMBER:
E101

SHEET No: 35 of 37