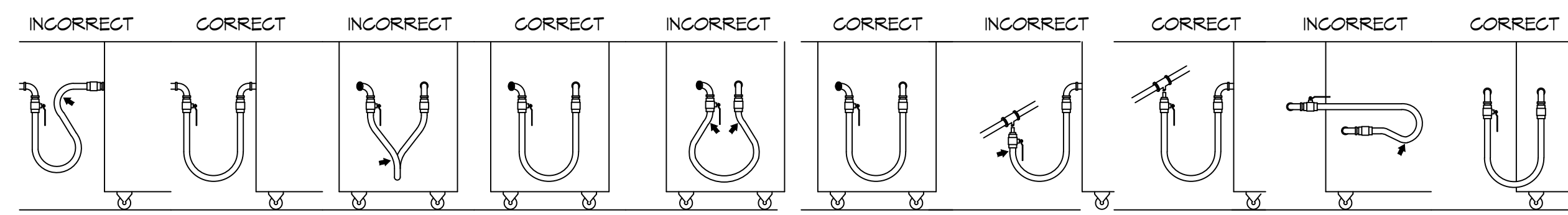


DATE: 01/11/2025, 11:51 AM, PROJECT: 2519 - Fire Station #10 (Fire Station) - District No. 1, SHEET: P102, DRAWING NUMBER: P102



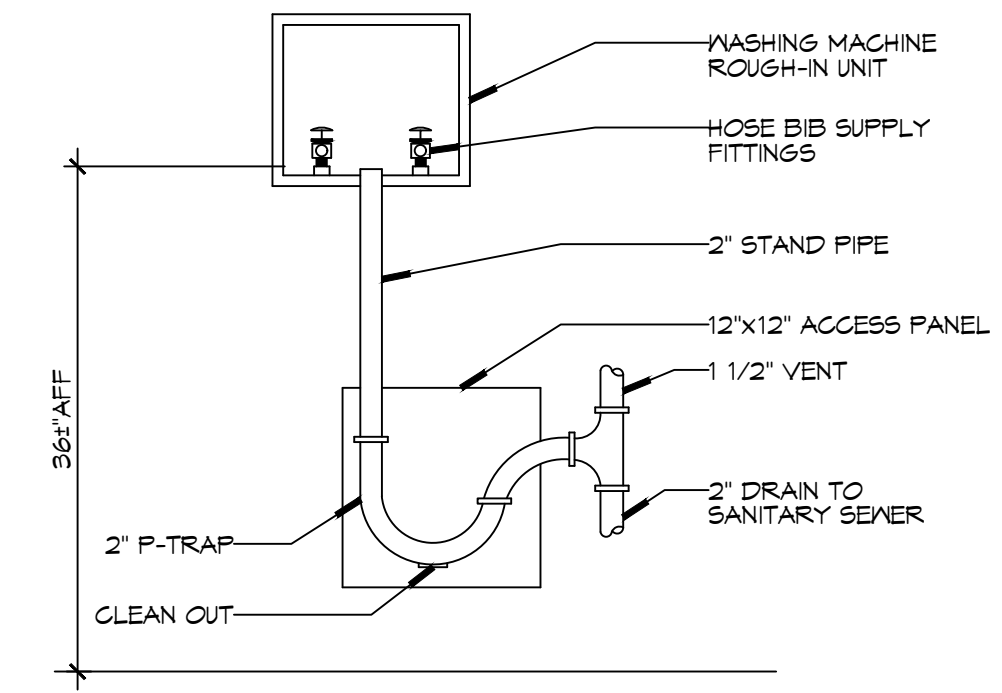
SHARP BENDS: THE CORRECT WAY TO INSTALL METAL HOSE FOR VERTICAL TRAVERSE IS WITH A SINGLE, NATURAL LOOP. AVOID SHARP BENDS THAT STRAIN AND TWIST THE METAL HOSE TO A POINT OF EARLY FAILURE AT THE COUPLING.

TWISTING: COUPLINGS AND HOSE FATIGUE: MAINTAIN THE MINIMUM BENDING DIAMETER OR LARGER BETWEEN THE COUPLINGS. FAILURE TO DO SO CAUSES TORSIONAL TWISTING & UNIDIRECTIONAL STRAIN CAUSING PREMATURE FAILURE.

SELF-DRAINING: IN ALL INSTALLATIONS WHERE SELF-DRAINING IS NOT NECESSARY, CONNECT METAL HOSE IN A VERTICAL LOOP. DO NOT CONNECT METAL HOSE HORIZONTALLY UNLESS SELF-DRAINING IS NECESSARY, THEN USE SUPPORT ON LOWER PLANE.

INCORRECT: AVOID SHARP BENDS AND KINKS WHEN PULLING EQUIPMENT AWAY FROM WALL. MAXIMUM PULL WILL KINK ENDS, EVEN IF INSTALLED PROPERLY, AND REDUCE CONNECTOR LIFE.

CORRECT: MINIMUM PULL OF EQUIPMENT AWAY FROM WALL PERMISSIBLE FOR ACCESSIBILITY TO SUPR-QUIK DISCONNECT.



3 DETAIL
SCALE: NTS
WASHING MACHINE HOOK-UP

GENERAL PIPING NOTES

- SEE SHEET P101 FOR GENERAL PLUMBING NOTES.
- WATER LINES ON EXTERIOR WALLS SHALL BE ROUTED ON INTERIOR SIDE OF INSULATION.
- NOT USED.
- SEE PLUMBING RISER DIAGRAMS FOR PIPE SIZES NOT INDICATED ON THIS SHEET.

LEGEND

SYMBOL	DESCRIPTION
— CW —	COLD WATER SUPPLY PIPING (CW)
— HW —	HOT WATER SUPPLY PIPING (HW)
— THW —	TEMPERED WATER SUPPLY PIPING (THW)
— GAS —	GAS PIPING
⊘	GLOBE VALVE
⊘	TEMPERING VALVE
⊘	GAS COCK
⊘	HEATER
↗	ELBOW UP
↘	ELBOW DOWN
⊕	HOSE BIB
⊕	SPRINKLER RISER

GAS EQUIPMENT SCHEDULE

DESCRIPTION	BTU INPUT
RINNAI TANKLESS HOT WATER HEATER	199,900
RANGE	106,500
SPACE HEATER	125,000
CLOTHES DRYER	35,000
GENERATOR	1261000
TOTAL BTU	1,707,400

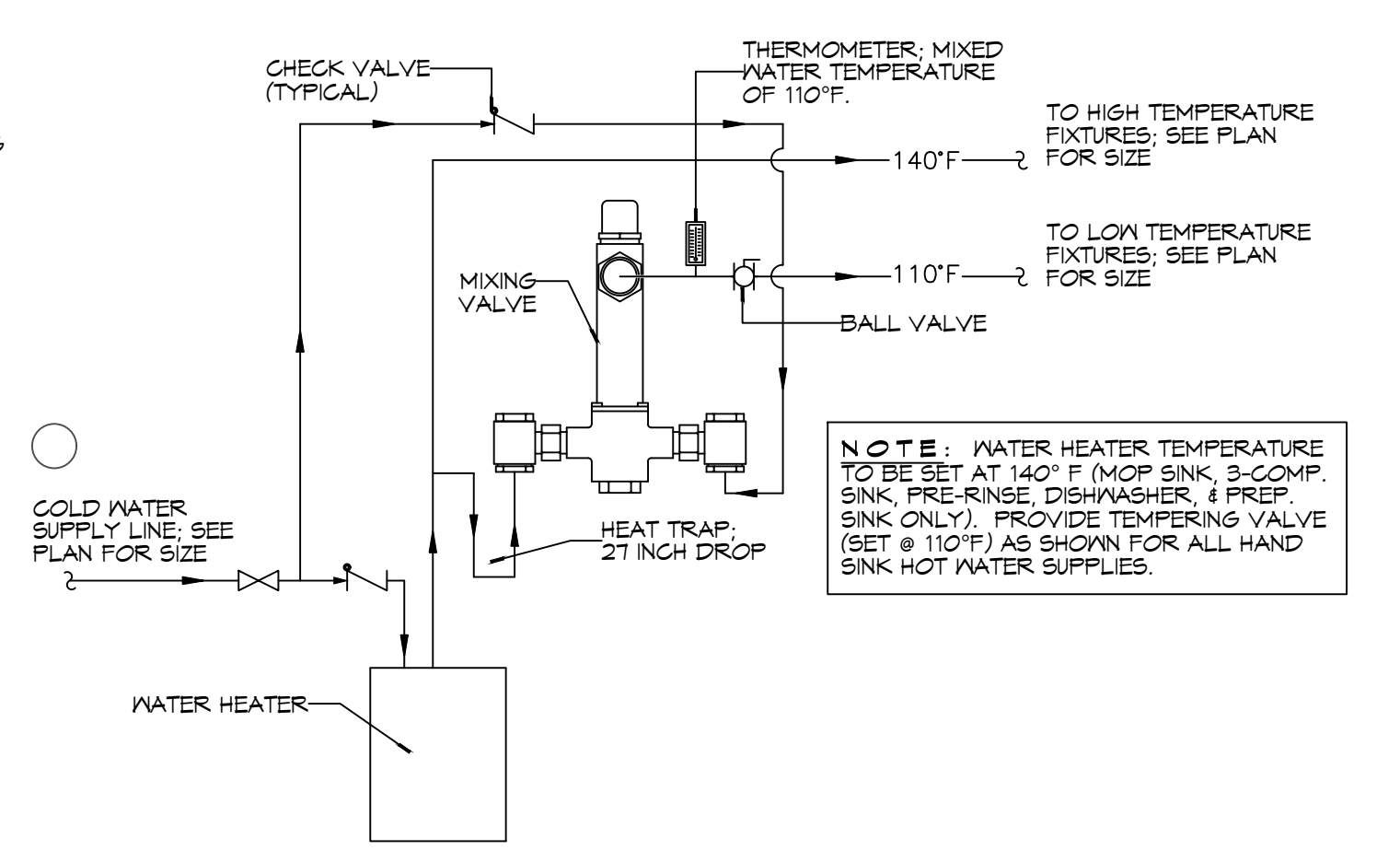
NOTES:
1. ALL GAS PIPE SHALL BE SCHEDULE 40 BLACK STEEL PIPE. ALL PIPE INSTALLED ON ROOF SHALL BE SUPPORTED ON A PIPE PIER SUPPORT SYSTEM. WOOD BLOCKING NOT ALLOWED.
2. ALL GAS PIPING IS SIZED FOR A LOW PRESSURE SYSTEM, (< 2 psig OR LESS AND A PRESSURE DROP OF 0.5in. OF WATER COLUMN.)

CONTACT FOR ATMOS ENERGY
Kathleen A DuFour
Account Representative
Atmos Energy Corporation
Louisiana Division
985-373-9177 Cell
kathleen.dufour@atmosenergy.com

CONTACT FOR MAGNOLIA WATER
Sieve Ernst
Director, Louisiana Regulatory Relations
Email: semst@scsurgroup.com
M(905) 640-1355

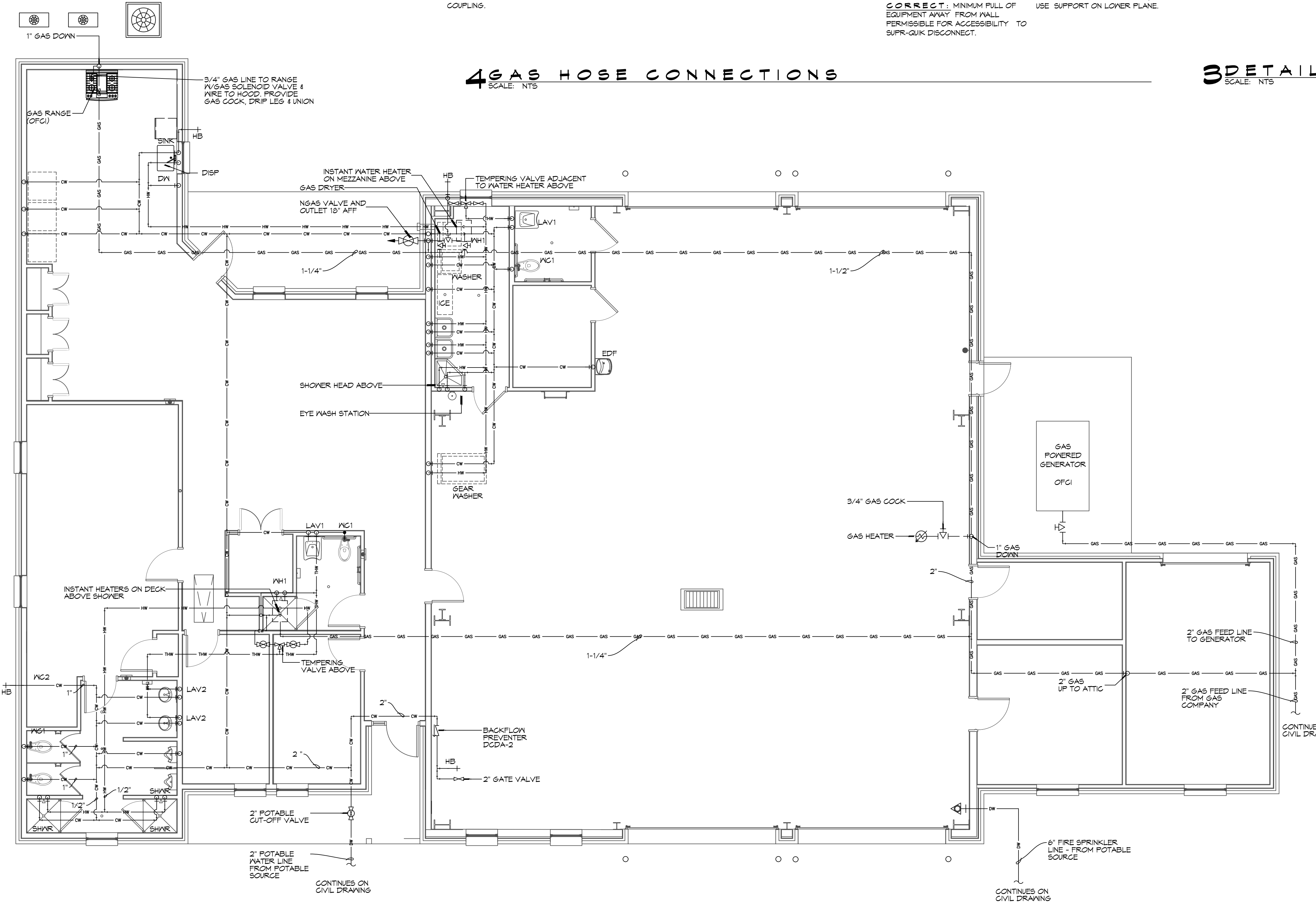
DRAWN DIAGRAMMATICALLY FOR CLARITY. FIELD VERIFY PLACEMENT OF ALL EQUIPMENT PRIOR TO FABRICATION.

- NOTES:**
- HEAT TRAP IS NOT REQUIRED WHERE MIXING VALVE IS INSTALLED BELOW STORAGE TANK OR WATER HEATER.
 - SET THE MIXING VALVE TO THE SYSTEM ACCORDING TO MANUFACTURER'S INSTRUCTIONS.



1 DETAIL
SCALE: NTS
TEMPERED WATER VALVE

4 GAS HOSE CONNECTIONS
SCALE: NTS



2 PLUMBING PLAN - WATER AND GAS
SCALE: 3/16"=1'-0"

DAMMON ENGINEERING, INC.
LOUISIANA & MISSISSIPPI
www.dammonengineering.com
info@dammonengineering.com
PH: 985.649.5832
Chief Engineer: Brian Mistich, PE
554 Old Spanish Trail
Slidell, LA 70458

#	DESCRIPTION	DATE



**NEW FIRE STATION #10
ST. TAMMANY FIRE PROTECTION DISTRICT NO. 1**

248 LAKESHORE VISTA BLVD
SLIDELL, LA 70461

DATE: 12-05-2025
JOB No: 2519
DRAWN BY: BAW
CHECKED BY: GKD

SHEET TITLE:
PLUMBING PLAN - WATER AND GAS

DRAWING NUMBER:
P102

SHEET No: 31 of 37