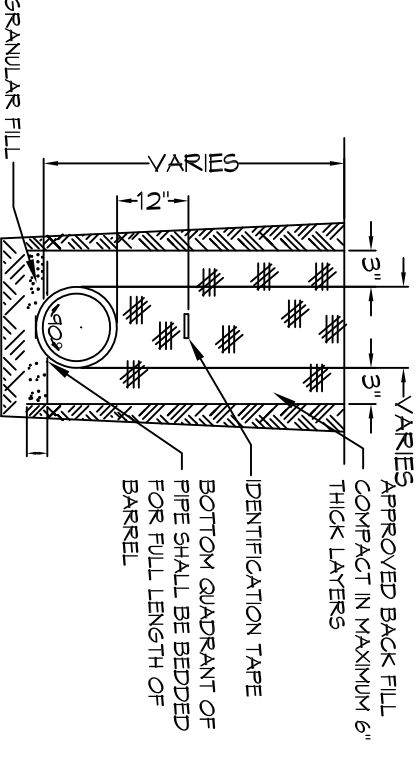
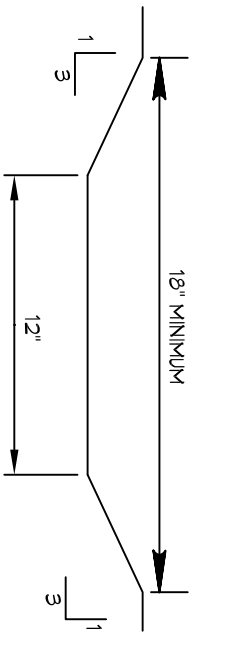


4 DETAIL
SCALE: N.T.S.
TYPICAL ROOF DRAIN

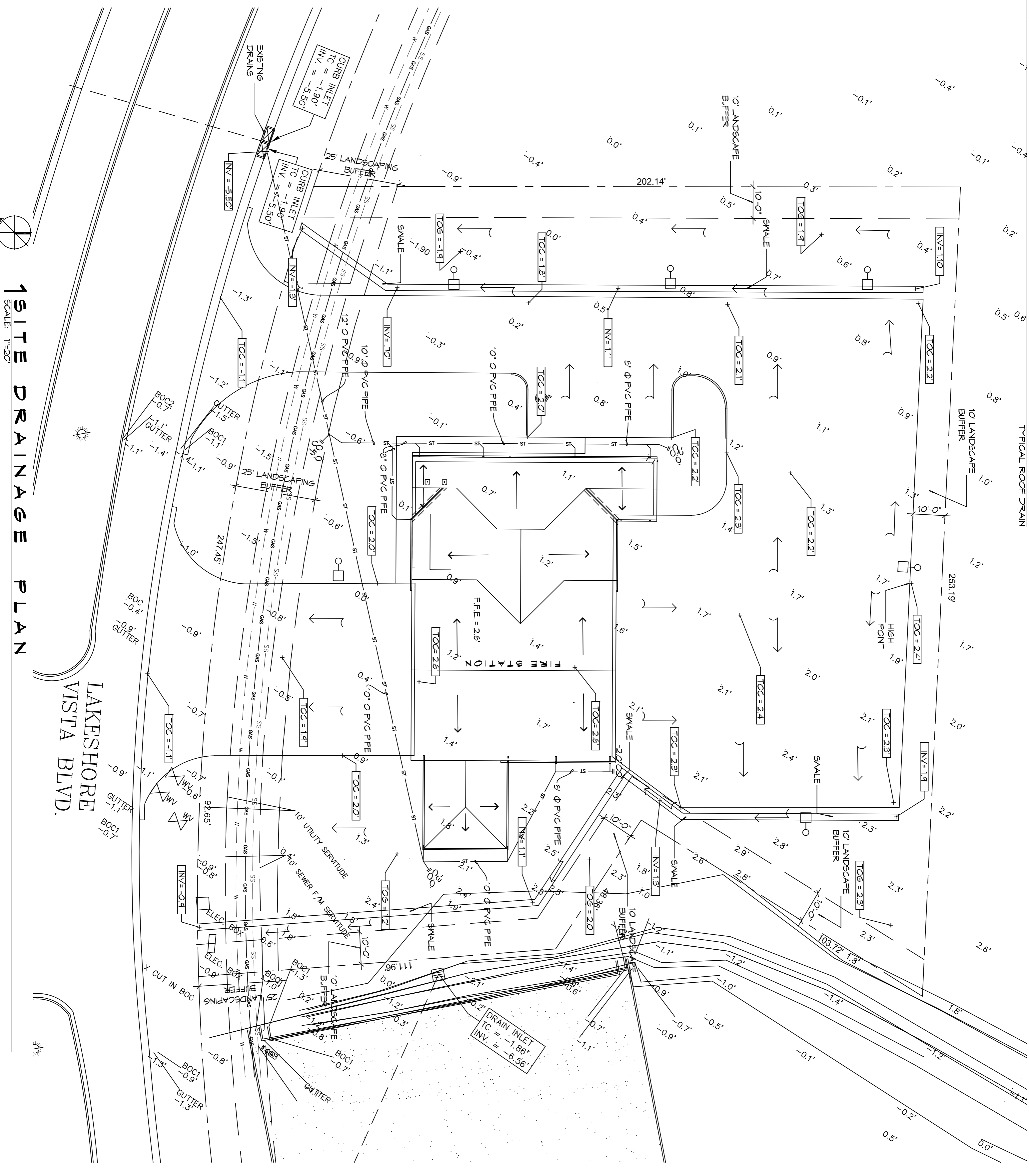


3 DETAIL
SCALE: N.T.S.
TYPICAL DRAIN PIPE



2 DETAIL
SCALE: N.T.S.
TYPICAL SWALE

SITE DRAINAGE LEGEND		GENERAL NOTES	
---	PROPERTY LINE	1.	DRAIN PIPE(S) MUST BE THE BELL AND SPIGOT TYPE WITH 0' RING RIBBER GASKETS. THE BELLS OF THE PIPES SHALL BE LINED UPSTREAM. ALL JOINTS SHALL BE MASKED WITH GEOTEXTILE FABRIC. ALL PIPES SHALL REQUIRE A 3\"/>
---	TOP OF CONCRETE	2.	DRAIN PIPE AND FITTINGS WITHIN PROPERTY LINE SHALL BE POLYVINYL CHLORIDE PLASTIC PIPE, MEETING CLASS 100 C-400 PVC.
---	TOP OF GRADE	3.	ELEVATIONS SHOWN ARE M.S.L.
---	VERT OF PIPE	4.	FIELD VERIFY ALL ELEVATIONS AND DRAINAGE SYSTEM PLACEMENT PRIOR TO START OF WORK.
---	EXISTING ELEVATIONS	5.	PROVIDE VERTICAL ELBOW AT DOWNPOINTS FOR CONNECTION TO SUBSURFACE DRAINAGE WHERE INDICATED. ELBOW ID SHALL BE SIZED SUCH THAT THE DOWNPOINT CAN BE INSERTED INTO THE PIPE OPENING.
---	NEW SUBSURFACE DRAINAGE PIPE	6.	MAINTAIN ALL DRAINAGE FOR PROPER PERFORMANCE.
---	DRAINAGE FLOW DIRECTION ARROWS		



1 SITE DRAINAGE PLAN
SCALE: 1\"/>

REVISIONS		DATE
#	DESCRIPTION	

DAMMON ENGINEERING, INC.
LOUISIANA & MISSISSIPPI

Chief Engineer: Brian Mistich, PE
554 Old Spanish Trail
Stidell, LA 70458

www.dammonengineering.com
info@dammonengineering.com
PH: 985.649.5832

**NEW FIRE STATION #10
ST. TAMMANY FIRE PROTECTION DISTRICT NO. 1**

2745 LAKESHORE VISTA BLVD
SLIDELL, LA 70461

JOB No: 2519 DATE: 1-16-2026
DRAWN BY: CKD CHECKED BY: BAM

The above drawings and specifications, design and engineering represent the work of Dammon Engineering, Inc. and shall remain the property of Dammon Engineering, Inc. and no part thereof shall be copied, reproduced, or used in connection with any work or project other than that specified on the drawings without the written consent of Dammon Engineering, Inc. Please contact with these drawings as specifications, final construction drawings, and specifications.

SHEET TITLE:
SITE PLAN - DRAINAGE AND DETAILS

DRAWING NUMBER:
C104

SHEET No: 8 OF 37