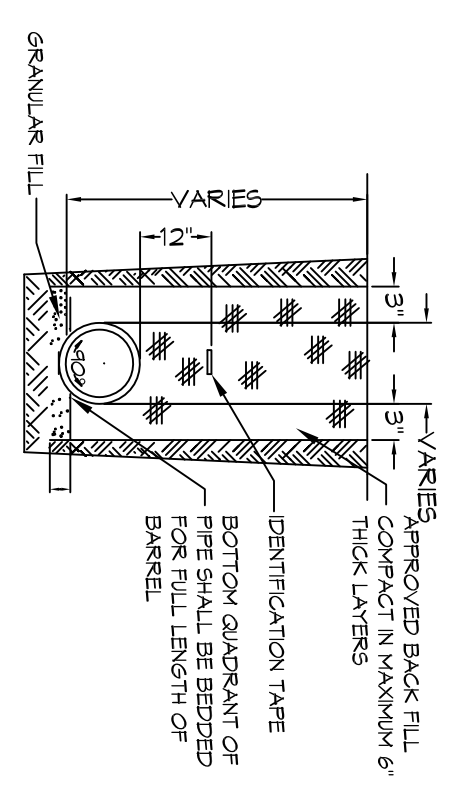
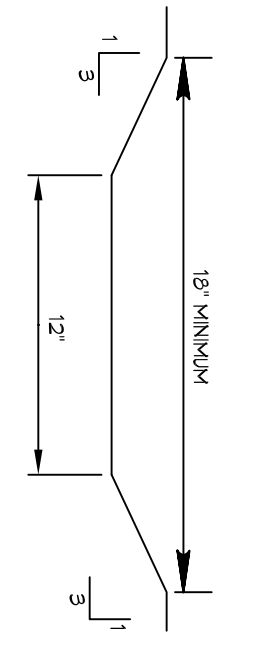


4 DETAIL
SCALE: N.T.S.
TYPICAL ROOF DRAIN



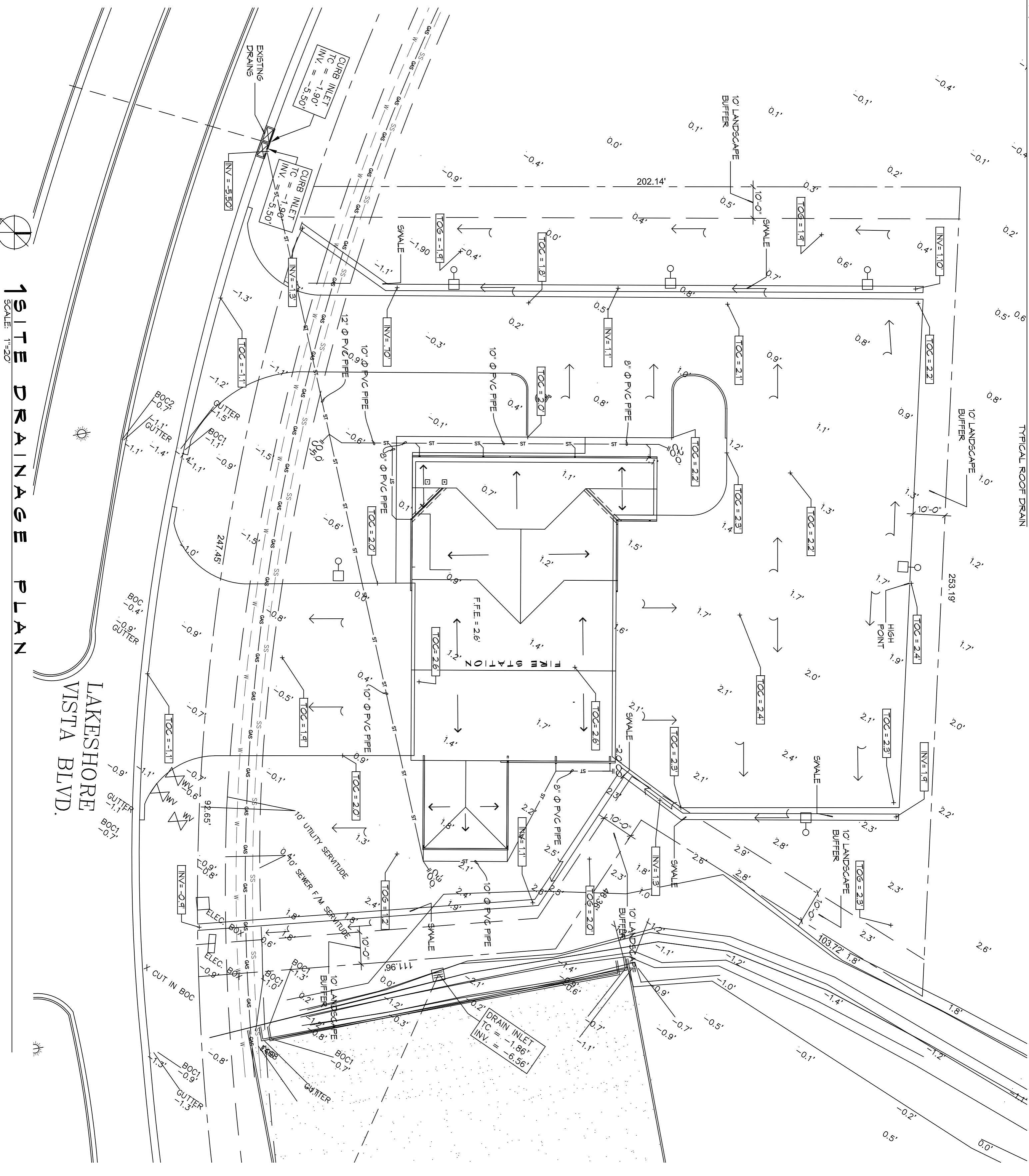
3 DETAIL
SCALE: N.T.S.
TYPICAL DRAIN PIPE



2 DETAIL
SCALE: N.T.S.
TYPICAL SWALE

NOTES:
1) DRAIN PIPE & FITTINGS SHALL BE POLY-VINYL CHLORIDE
2) PLASTIC PIPE JOINTING CLASS 100 C-400 PVC
3) ELEVATIONS SHOWN ARE M.S.L.

SITE DRAINAGE LEGEND		GENERAL NOTES	
---	PROPERTY LINE	1.	DRAIN PIPES MUST BE THE BELL AND SPIGOT TYPE WITH 90° RING RUBBER GASKETS. THE BELLS OF THE PIPES SHALL BE UPSTREAM. ALL JOINTS SHALL BE WEAPOURED WITH GEOTEXTILE FABRIC. ALL PIPES SHALL REQUIRE A 3\"/>
---	TOP OF CONCRETE	2.	DRAIN PIPE AND FITTINGS WITHIN PROPERTY LINE SHALL BE POLY-VINYL CHLORIDE PLASTIC PIPE, JOINTING CLASS 100 C-400 PVC.
---	TOP OF GRADE	3.	ELEVATIONS SHOWN ARE M.S.L.
---	VERT OF PIPE	4.	FIELD VERIFY ALL ELEVATIONS AND DRAINAGE SYSTEM PLACEMENT PRIOR TO START OF WORK.
---	EXISTING ELEVATIONS	5.	PROVIDE VERTICAL ELBOW AT DOWNSPOUTS FOR CONNECTION TO SUBSURFACE DRAINAGE WHERE INDICATED. ELBOW ID SHALL BE SIZED SUCH THAT THE DOWNSPOUT CAN BE INSERTED INTO THE PIPE OPENING.
---	NEW SUBSURFACE DRAINAGE PIPE	6.	MAINTAIN ALL DRAINAGE FOR PROPER PERFORMANCE.
---	DRAINAGE FLOW DIRECTION ARROWS		



1 SITE DRAINAGE PLAN
SCALE: 1"=20'

NEW FIRE STATION #10
ST. TAMMANY FIRE PROTECTION DISTRICT NO. 1

2745 LAKESHORE VISTA BLVD
SLIDELL, LA 70461

JOB No: 2519 DATE: 1-16-2026
DRAWN BY: CKD CHECKED BY: BAM

2745 LAKESHORE VISTA BLVD
SLIDELL, LA 70461

2745 LAKESHORE VISTA BLVD
SLIDELL, LA 70461

2745 LAKESHORE VISTA BLVD
SLIDELL, LA 70461

REVISIONS		DATE
#	DESCRIPTION	

DAMMON ENGINEERING, INC.
LOUISIANA & MISSISSIPPI

Chief Engineer: Brian Mistich, PE
554 Old Spanish Trail
Slidell, LA 70458

www.dammonengineering.com
info@dammonengineering.com
PH: 985.649.5832

C104

SHEET NO. 8 OF 37